

Structure	Use	Covered Area	Storey	Structure Height
Structure A	Shop and service (Grocery)	42.9m <sup>2</sup> (about)	1- storey	4.6m
Structure B	Storage	15.3m <sup>2</sup> (about)	1- storey	3m
Structure C	Storage	15.3m <sup>2</sup> (about)	1- storey	3m
Structure D	Shop and Service(Car Beaty Product)	92m <sup>2</sup> (about)	1- storey	4m
Structure E	Office	15.3m <sup>2</sup> (about)	1- storey	3m
Structure F	Office	15.3m <sup>2</sup> (about)	2- storeys	6m
Structure G	Storage	15.3m <sup>2</sup> (about)	1- storey	3m
Structure H	Storage	15.3m <sup>2</sup> (about)	1- storey	3m
Structure I	Meter Room	15.3m <sup>2</sup> (about)	1- storey	3m

Project :  
Proposed Shop &  
Service  
  
Lot 283 S.A RP(Part)  
in DD109

Scale:  $\frac{1}{1.350}$

Drawn By :

OZP :  
Planning No.:  
Zone :  
District :

Legend :

### Proposed Layout Plan

(摘錄自申請人於 6.6.2018 呈交的申請書)  
(Extract from Applicant's  
Submission of 6.6.2018)

參考編號  
REFERENCE No.  
A/YL-KTN/611

繪圖 DRAWING  
A-1



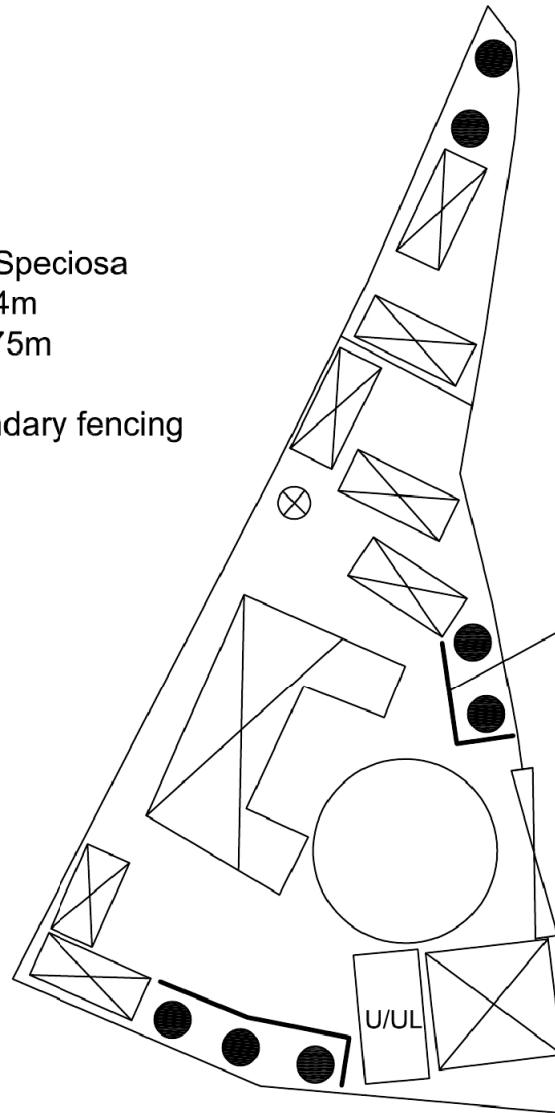
No. of Proposed Tree: 7

Species of Tree: Lagerstroemia Speciosa

Spacing of Tree: Not more than 4m

Height of Tree: Not less than 2.75m

All trees are 600mm off the boundary fencing



Kerbs to prevent tree from  
damaging from vehicle

### Legend

● Proposed Tree

## Appendix I

Project :

Scale : 1:350

Drawn By :

OZP :  
Planning No.:  
Zone :  
District :

Legend :

A/YL-KTN/611  
Landscape Proposal

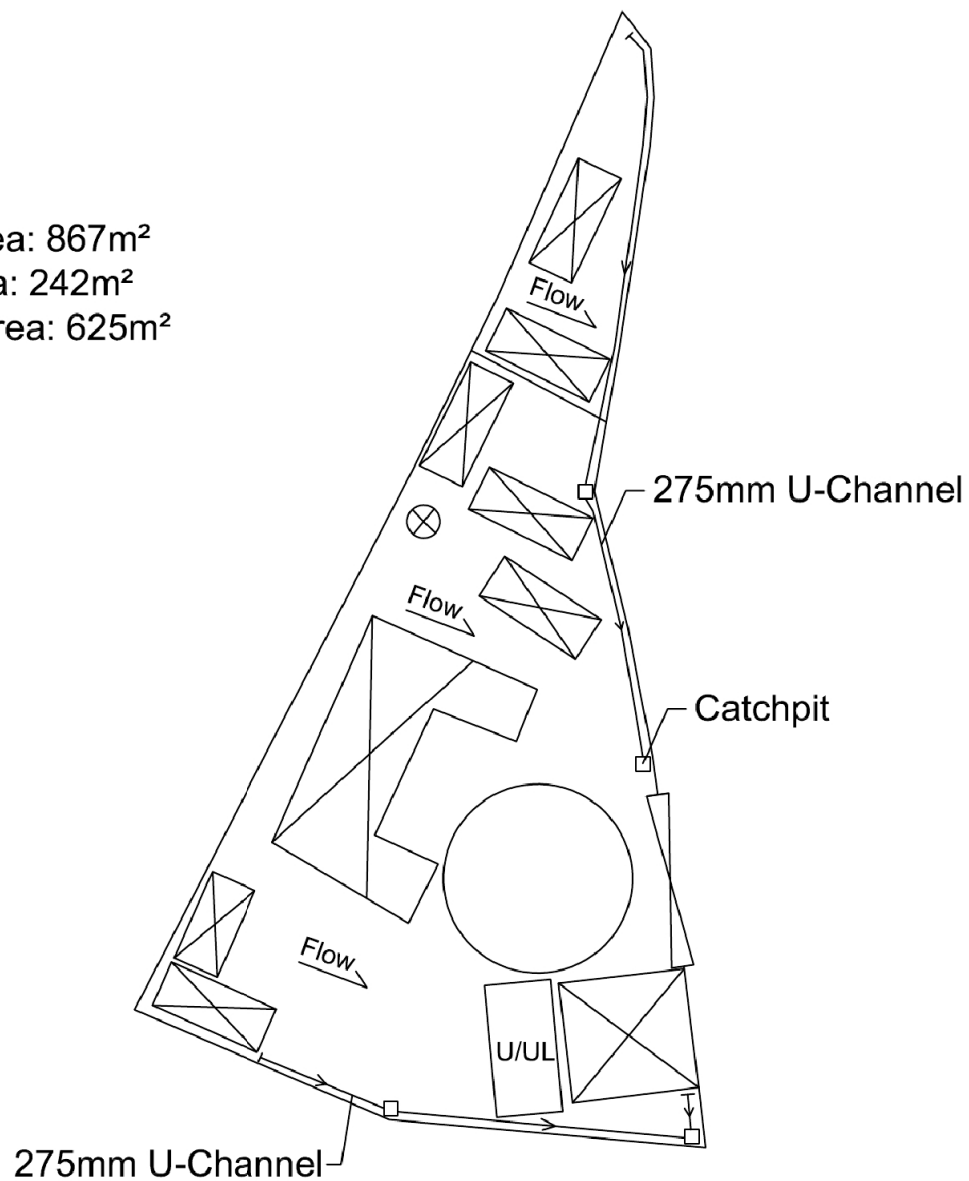
(摘錄自申請人於 19. 7. 2018 呈交的進一步資料)  
(Extract from Applicant's Further  
Information Submitted on 19.7.2018)

參考編號  
REFERENCE No.  
A/YL-KTN/611

繪圖 DRAWING  
A-2



Total Site Area: 867m<sup>2</sup>  
Covered Area: 242m<sup>2</sup>  
Uncovered Area: 625m<sup>2</sup>



## Appendix II

Project :

Scale : 1:350

Drawn By :

OZP :  
Planning No.:  
Zone :  
District :

Legend :

A/YL-KTN/611  
Drainage Proposal

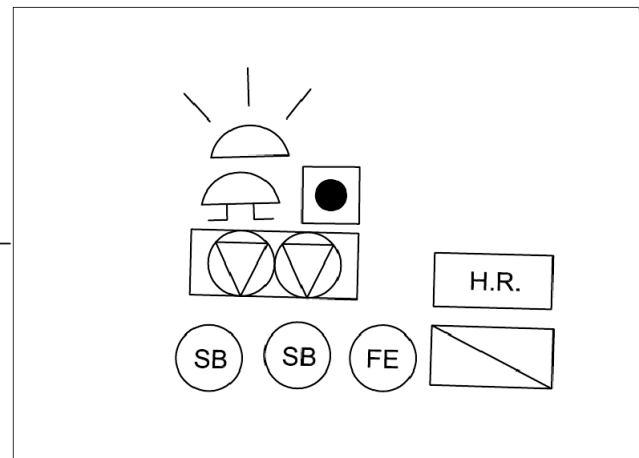
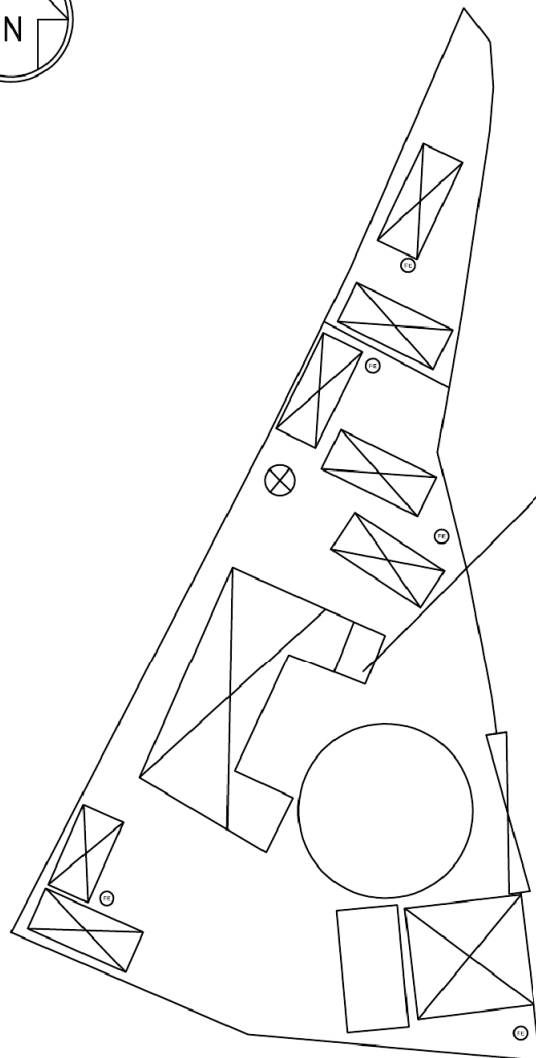
(摘錄自申請人於 19. 7. 2018 呈交的進一步資料)  
(Extract from Applicant's Further  
Information Submitted on 19.7.2018)

參考編號  
REFERENCE No.  
A/YL-KTN/611

繪圖 DRAWING  
A-3



### Appendix III



#### FS NOTE:

1. Sufficient emergency lighting shall be provided throughout the entire building in accordance with BS5266: Part1 and BS EN1838
2. Sufficient directional and exit sign shall be provided in accordance with BS5266: Part 1 and FSD Circular Letter 5/2008.
3. Fire Alarm System provided throughout the entire building in accordance with BS+5839-1:2002A 2:2008 and FSD Circular Letter. 1/2009 One actuation point should include facilities for fire pump start and audio /visual warning device initiation.
4. A modified hose reel system supplied by 2m3 FS water tank shall be provided. There shall be sufficient hose reels to ensure that every part of each building can be reach by a length of not more than 30m of hose reel tubing.
5. Potable hand-operated approved application shall be provided as required by occupancy.
6. Visual fire alarm systems as required under the deisgn manual : Barrier Free Access 20008 (FSD Circular Letter No. 2/2012)
7. Where an electrical installation is required to comply with this Code, a primary and secondary source of supply shall be provided to the satisfaction of the Director of Fire Services and all such installations shallbe fed from both the primary and secondary source of supply.

Project :

Scale : 1:500

Drawn By :

OZP  
Planning No.:  
Zone :  
District :

Legend :

- Exit Sign
- Visual Fire Alarm
- Fire Alarm Bell
- Manual Fire Alarm Call Point
- Emergency Light
- Sounder
- 4.5kg CO2 Gas Type Fire Extinguisher
- 2m3 FS Water Tank
- Fire Alarm Hose reel Pump Control Panel
- Fire Hose reel
- Fire Hose reel Pump With Enclosure

A/YL-KTN/611

FSIs Proposal

(摘錄自申請人於 19.7.2018 呈交的進一步資料)  
(Extract from Applicant's Further  
Information Submitted on 19.7.2018)

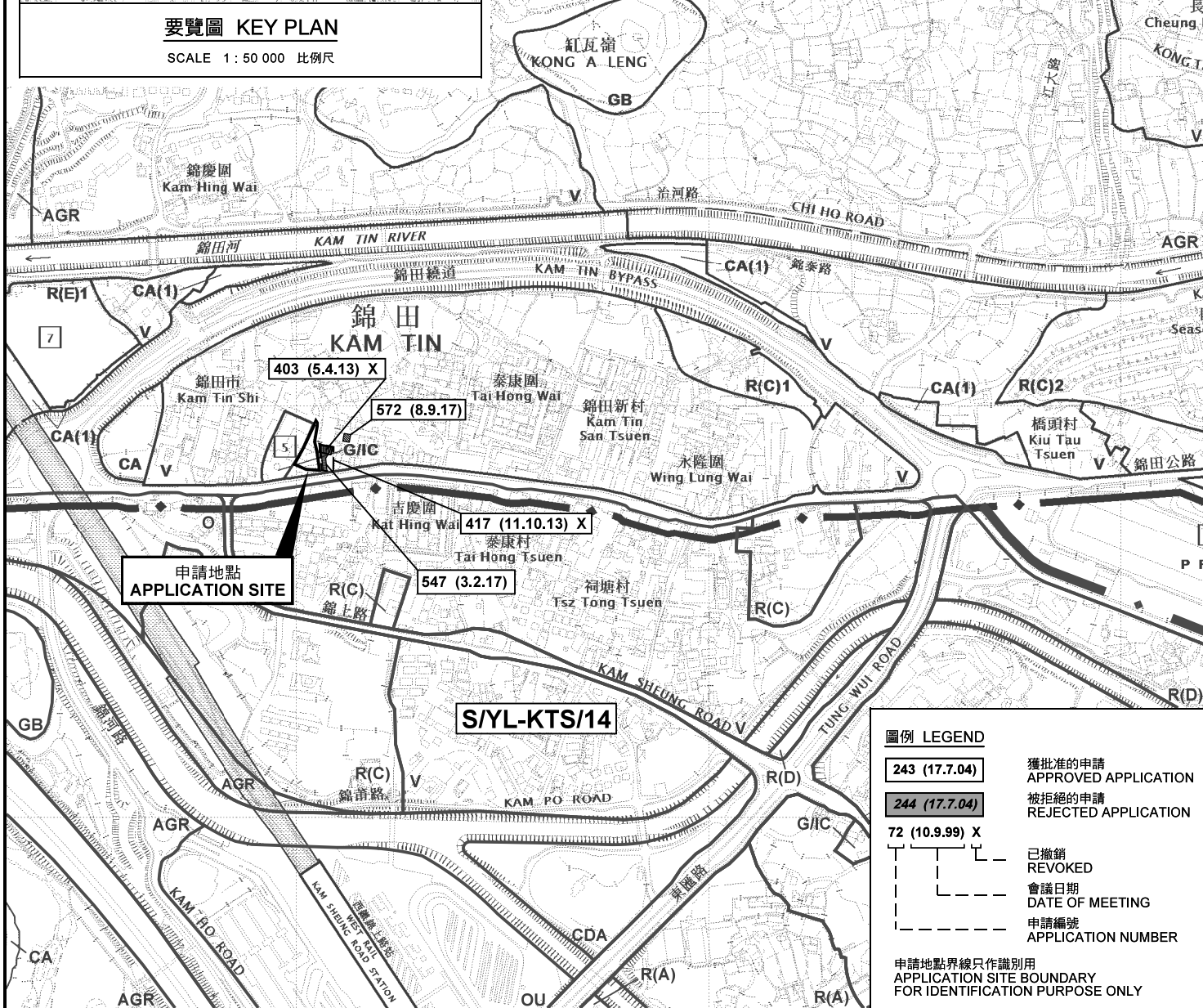
參考編號  
REFERENCE No.  
A/YL-KTN/611

繪圖 DRAWING  
A-4



要覽圖 KEY PLAN

SCALE 1 : 50 000 比例尺



圖例 LEGEND

- 243 (17.7.04) 獲批准的申請  
APPROVED APPLICATION
- 244 (17.7.04) 被拒絕的申請  
REJECTED APPLICATION
- 72 (10.9.99) X 已撤銷  
REVOKED
- 72 (10.9.99) X 會議日期  
DATE OF MEETING
- 72 (10.9.99) X 申請編號  
APPLICATION NUMBER

申請地點界線只作識別用  
APPLICATION SITE BOUNDARY  
FOR IDENTIFICATION PURPOSE ONLY

位置圖及同類申請 LOCATION PLAN WITH SIMILAR APPLICATIONS

臨時商店及服務行業  
(家居日用品、五金貨品零售商店及汽車美容產品)連附屬辦公室 (為期3年)  
元朗錦田高埔村丈量約份第109約地段第283號A分段餘段(部分)  
TEMPORARY SHOP AND SERVICES  
(GROCERY, METALWARE RETAIL SHOP AND CAR BEAUTY PRODUCT)  
WITH ANCILLARY OFFICE FOR A PERIOD OF 3 YEARS  
LOT 283 S.A RP (PART) IN D.D. 109,  
KO PO TSUEN, KAM TIN, YUEN LONG

SCALE 1 : 7 500 比例尺  
米 100 0 100 200 300 米  
METRES

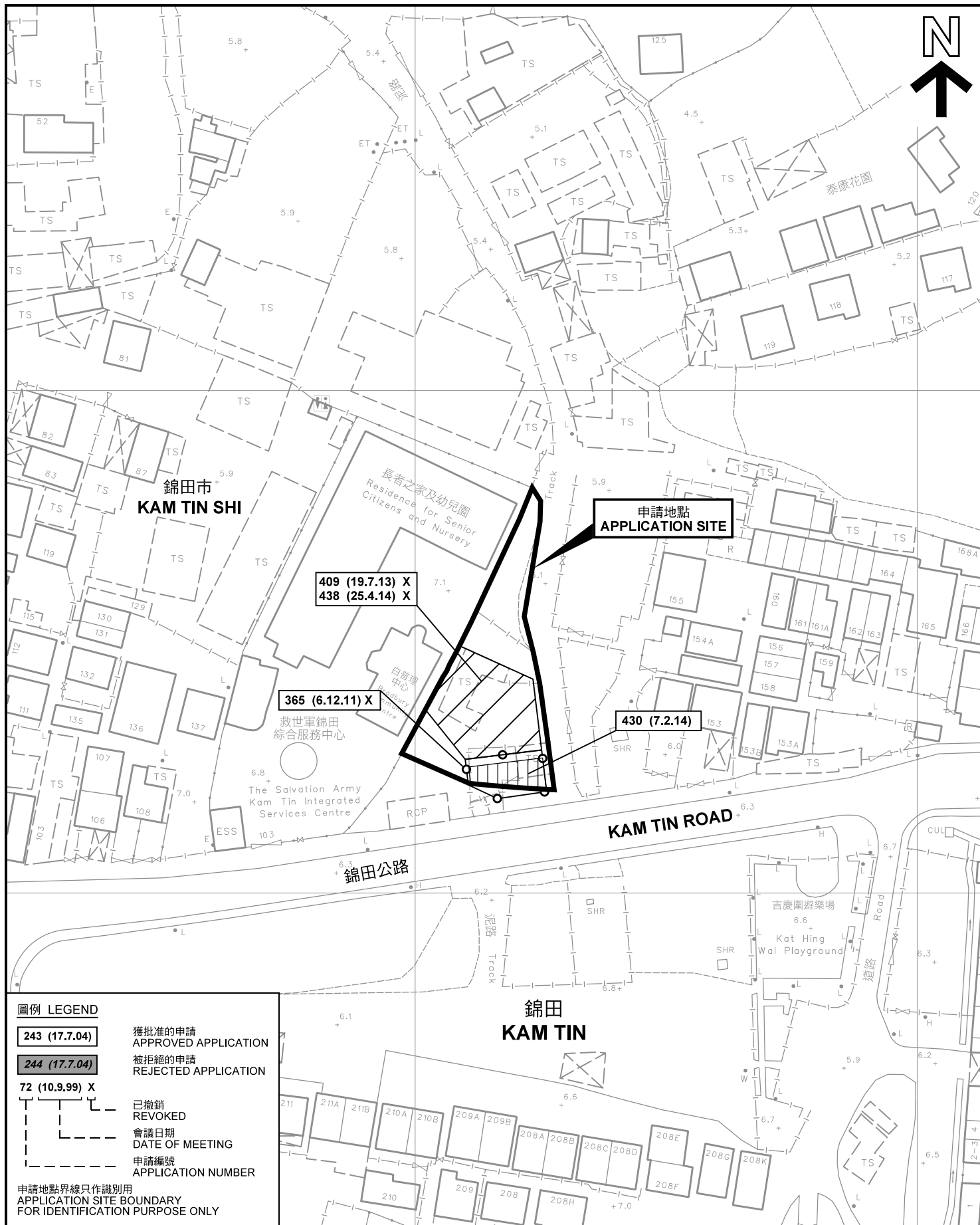
本摘要圖於2018年7月16日擬備，  
所根據的資料為2014年12月2日  
核准的分區計劃大綱圖編號 S/YL-KTN/9  
EXTRACT PLAN PREPARED ON 16.7.2018  
BASED ON OUTLINE ZONING PLAN No.  
S/YL-KTN/9 APPROVED ON 2.12.2014

規劃署  
PLANNING  
DEPARTMENT



參考編號  
REFERENCE No.  
A/YL-KTN/611

圖 PLAN  
A-1a



### 先前申請圖 PREVIOUS APPLICATION PLAN

臨時商店及服務行業  
(家居日用品、五金貨品零售商店及汽車美容產品)連附屬辦公室 (為期3年)  
元朗錦田高埔村丈量約份第109約地段第283號A分段餘段(部分)  
TEMPORARY SHOP AND SERVICES  
(GROCERY, METALWARE RETAIL SHOP AND CAR BEAUTY PRODUCT)  
WITH ANCILLARY OFFICE FOR A PERIOD OF 3 YEARS  
LOT 283 S.A RP (PART) IN D.D. 109,  
KO PO TSUEN, KAM TIN, YUEN LONG

SCALE 1 : 1 000 比例尺

米 20 0 20 40 米  
METRES

規劃署  
PLANNING  
DEPARTMENT



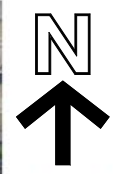
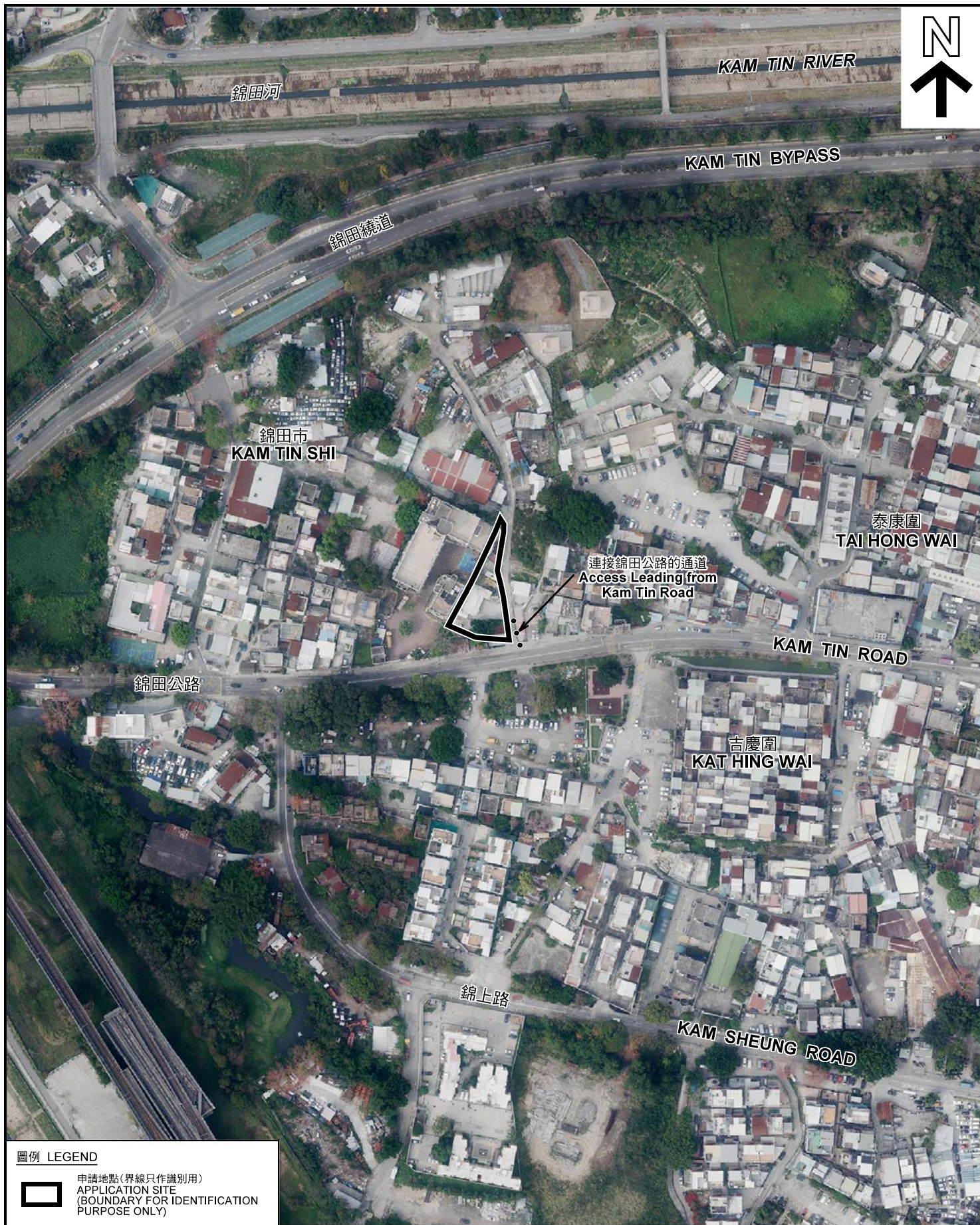
參考編號  
REFERENCE No.  
A/YL-KTN/611

圖 PLAN  
A-1b









**圖例 LEGEND**



申請地點(界線只作識別用)  
APPLICATION SITE  
(BOUNDARY FOR IDENTIFICATION  
PURPOSE ONLY)

本摘要圖於2018年7月4日擬備，所根據的資料為地政總署於2018年3月13日拍得的航攝照片編號 E035235C  
EXTRACT PLAN PREPARED ON 4.7.2018  
BASED ON AERIAL PHOTO No.  
E035235C TAKEN ON 13.3.2018  
BY LANDS DEPARTMENT

**航攝照片 AERIAL PHOTO**

臨時商店及服務行業  
(家居日用品、五金貨品零售商店及汽車美容產品)連附屬辦公室(為期3年)  
元朗錦田高埔村丈量約份第109約地段第283號A分段餘段(部分)  
TEMPORARY SHOP AND SERVICES  
(GROCERY, METALWARE RETAIL SHOP AND CAR BEAUTY PRODUCT)  
WITH ANCILLARY OFFICE FOR A PERIOD OF 3 YEARS  
LOT 283 S.A RP (PART) IN D.D. 109,  
KO PO TSUEN, KAM TIN, YUEN LONG

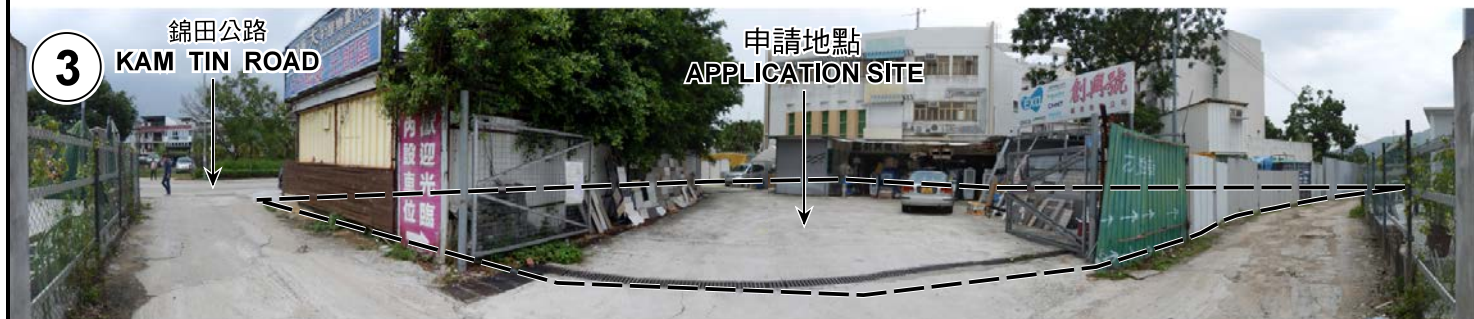
規劃署  
PLANNING  
DEPARTMENT



參考編號  
REFERENCE No.  
A/YL-KTN/611

圖 PLAN  
A-3





申請地點界線只作識別用 APPLICATION SITE BOUNDARY FOR IDENTIFICATION PURPOSE ONLY

### 實地照片 SITE PHOTOS

本圖於2018年7月9日擬備，所根據的資料為攝於2018年6月15日的實地照片  
PLAN PREPARED ON 9.7.2018  
BASED ON SITE PHOTOS  
TAKEN ON 15.6.2018

臨時商店及服務行業  
(家居日用品、五金貨品零售商店及汽車美容產品)連附屬辦公室(為期3年)  
元朗錦田高埔村丈量約份第109約地段第283號A分段餘段(部分)  
TEMPORARY SHOP AND SERVICES  
(GROCERY, METALWARE RETAIL SHOP AND CAR BEAUTY PRODUCT)  
WITH ANCILLARY OFFICE FOR A PERIOD OF 3 YEARS  
LOT 283 S.A RP (PART) IN D.D. 109,  
KO PO TSUEN, KAM TIN, YUEN LONG

規劃署  
PLANNING  
DEPARTMENT



參考編號  
REFERENCE No.  
A/YL-KTN/611

圖 PLAN  
A-4