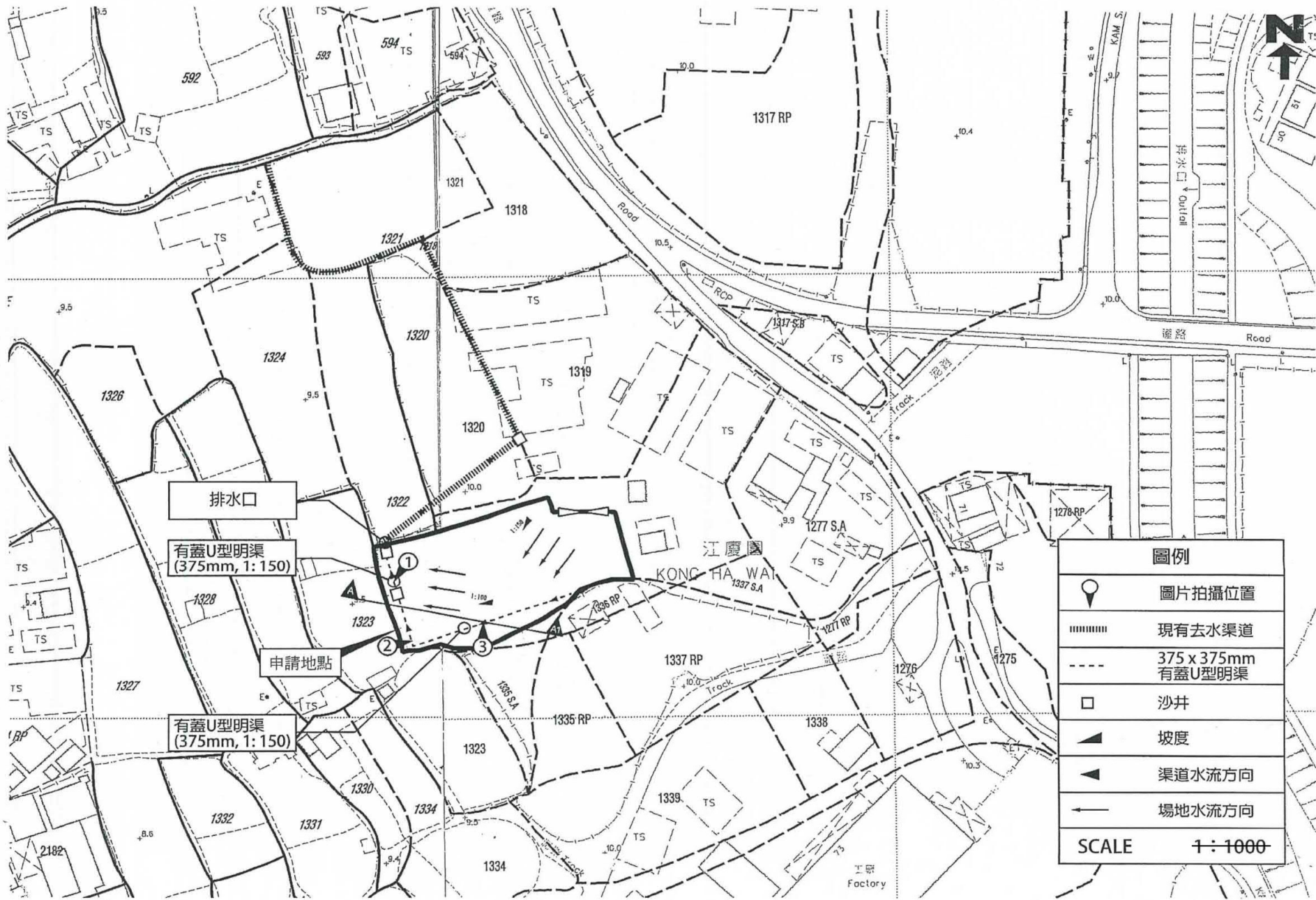


植物學名稱	尺寸 (最少高度/毫米)	間距上限 (中央之間距離/毫米)	數目
細葉榕 (<i>Ficus microcarpa</i>)	不少於2,750毫米	約3000 - 4000毫米	4
朴樹 (<i>Celtis sinensis</i>)	不少於2,750毫米	約3000 - 4000毫米	1
細葉鴨腳木 (<i>Schefflera arboricola</i>)	不少於600毫米	約450毫米	14

圖例	
⊕	現有綠化植物
---	現有綠色圍板
SCALE	1:1000

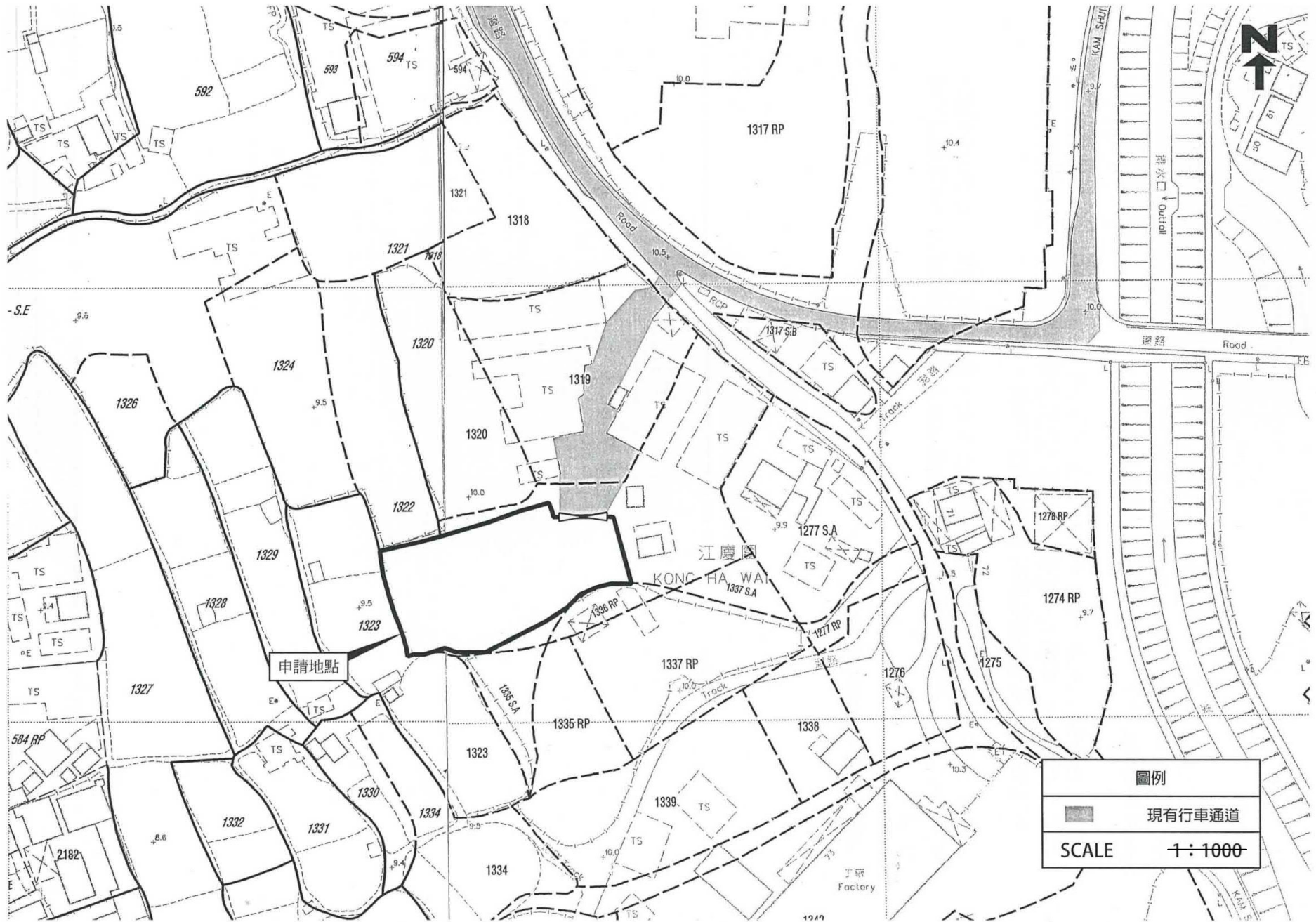
(摘錄自申請人於 26.9.2018 呈交的申請書)
 (Extract from Applicant's
 Submission of 26.9.2018)

參考編號 REFERENCE No. A/YL-KTS/805	繪圖 DRAWING A-2
---------------------------------------	-------------------



(摘錄自申請人於 26.9.2018 呈交的申請書)
 (Extract from Applicant's
 Submission of 26.9.2018)

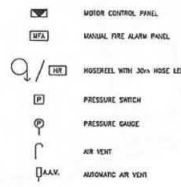
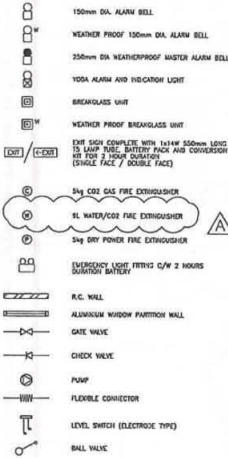
參考編號 REFERENCE No.	繪圖 DRAWING
A/YL-KTS/805	A-3



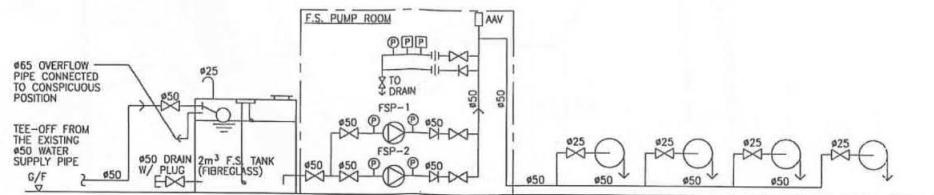
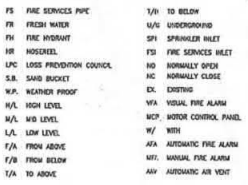
(摘錄自申請人於 26.9.2018 提交的申請書)
 (Extract from Applicant's
 Submission of 26.9.2018)

參考編號 REFERENCE No.	繪圖 DRAWING
A/YL-KTS/805	A-4

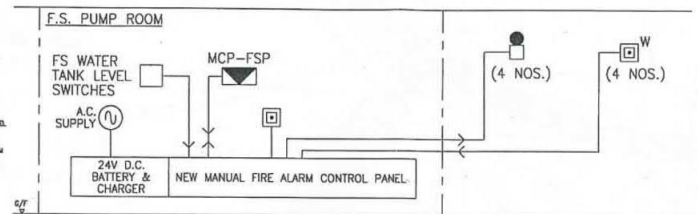
LEGEND



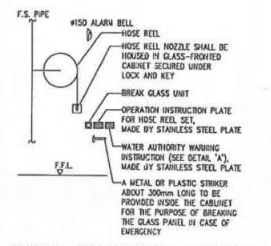
ABBREVIATION



SCHMATIC DIAGRAM FOR HOSE REEL SYSTEM



SCHMATIC DIAGRAM FOR MANUAL FIRE ALARM SYSTEM



TYPICAL ARRANGEMENT OF HOSE REEL (N.T.S.)

F.S. NOTES

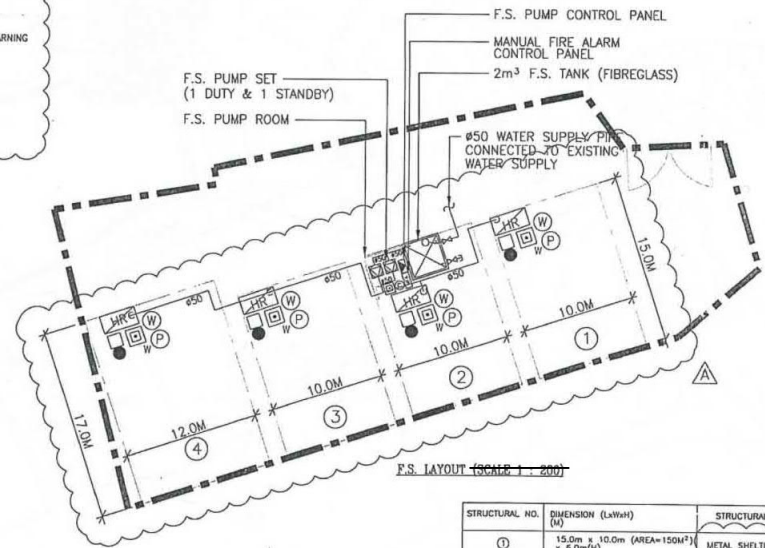
- SUFFICIENT EMERGENCY LIGHTING SHALL BE PROVIDED THROUGHOUT THE ENTIRE BUILDING IN ACCORDANCE WITH BS 5266 : PART 1 AND BS EN 1838.
- SUFFICIENT DIRECTIONAL AND EXIT SIGN SHALL BE PROVIDED IN ACCORDANCE WITH BS 5266 : PART 1 AND FSD CIRCULAR LETTER NO. 5/2008.
- FIRE ALARM SYSTEM SHALL BE PROVIDED TO THE ENTIRE BUILDING IN ACCORDANCE WITH BS 5839 : PART 1 2002 + A2 : 2008 AND FIRE SERVICES DEPARTMENT (FSD) CIRCULAR LETTER NO. 1/2009 ONE ACTUATING POINT AND ONE AUDIO WARNING DEVICE TO BE LOCATED AT EACH HOSE REEL POINT. THIS ACTUATION POINT SHOULD INCLUDE FACILITIES FOR FIRE PUMP START AND AUDIO / VISUAL WARNING DEVICE INITIATION.
- PORTABLE FIRE FIGHTING APPLIANCES SHALL BE PROVIDED AT POSITIONS AS INDICATED ON LAYOUT PLANS IN ACCORDANCE TO CODES OF PRACTICE FOR MINIMUM FIRE SERVICES INSTALLATIONS AND EQUIPMENT.
- MODIFIED HOSE REEL SYSTEM WITH 2M³F.S. WATER TANK SHALL BE PROVIDED. THERE SHALL BE SUFFICIENT HOSE REELS TO ENSURE THAT EVERY PART OF EACH BUILDING CAN BE REACHED BY A LENGTH OF NOT MORE THAN 30M OF HOSE REEL TUBING FOR THE ENTIRE BUILDING.

SCHEDULE OF PIPE MATERIALS

- ABOVE GROUND PIPEWORK :**
- FIRE HYDRANT/HOSE REEL/SPRINKLER PIPEWORK UP TO & INCLUDING $\phi 150\text{mm}$ GALVANIZED MILD STEEL PIPES TO BS1387 MEDIUM GRADE FOR SCREWING TO SS21 PIPE THREADS.
- BELOW GROUND PIPEWORK :**
- FIRE HYDRANT/HOSE REEL/SPRINKLER PIPEWORK UP TO & INCLUDING $\phi 150\text{mm}$ GALVANIZED MILD STEEL PIPES TO BS1387 HEAVY GRADE (WRAPPED WITH BITUMENT FELT)

PUMP SCHEDULE

EQUIPMENT	EQUIPMENT REF.	MODE OF OPERATION	DUTY FLOW (L/min.)	DUTY HEAD (kPa)	MOTOR RATING (kW)	PUMP SPEED (rpm)	PUMP TYPE
FS PUMPS	FSP-1	DUTY	30	450	2.2	2900	VERTICAL MULTI-STAGE
	FSP-2	STANDBY	30	450	2.2	2900	VERTICAL MULTI-STAGE



F.S. LAYOUT (SCALE 1:200)

STRUCTURAL NO.	DIMENSION (LxWxH) (M)	STRUCTURAL USAGE
①	15.0m x 10.0m (AREA=150M ²) x 6.0m(H)	METAL SHELTER FOR STORAGE
②	15.0m x 10.0m (AREA=150M ²) x 6.0m(H)	METAL SHELTER FOR STORAGE
③	15.0m x 10.0m (AREA=150M ²) x 6.0m(H)	METAL SHELTER FOR STORAGE
④	17.0m x 12.0m (AREA=204M ²) x 6.0m(H)	METAL SHELTER FOR STORAGE

B.D. REF.:

FSD REF.:

BD REF.: A/YL-KTS/588

PIPE SIZE	COLOUR CODE
Ø20mm	ORANGE
Ø25mm	GREEN
Ø32mm	RED
Ø40mm	PURPLE
Ø50mm	YELLOW
Ø63mm	LIGHT BLUE
Ø80mm	DARK GREEN
Ø100mm	LIGHT BROWN
Ø150mm	BROWN
Ø200mm	DARK BLUE

LOCATION PLAN

REV.	DATE	DESCRIPTION
A	AUG. 2013	RENISED AS PER FSD'S COMMENTS ON 27/06/2013

CLIENT :

ARCHITECTS & ENGINEERS:

PENTECH BUILDING SERVICES

F.S. COORDINATOR

JOB TITLE :

TEMPORARY WAREHOUSE FOR STORAGE OF RECYCLED BUILDING MATERIAL PRODUCTS LOT 1336 S.A. (PART) BY G.D. 106 KONG HA WAI, KAM SHUNG ROAD, PAT HEUNG, YUEN LONG

DRAWING TITLE :

BLOCK PLAN, NOTES, LEGEND, ABBREVIATION SCHEMATIC DIAGRAMS OF HOSE REEL SYSTEM AND MANUAL FIRE ALARM SYSTEM & F.S. LAYOUT

SCALE	AS SHOWN	DRAWN DATE
		MAY, 2013

DRAWN BY:	CAD	CHECKED BY:	R. TAM

DRAWING NO.:	REV. NO.:
FS-01	A

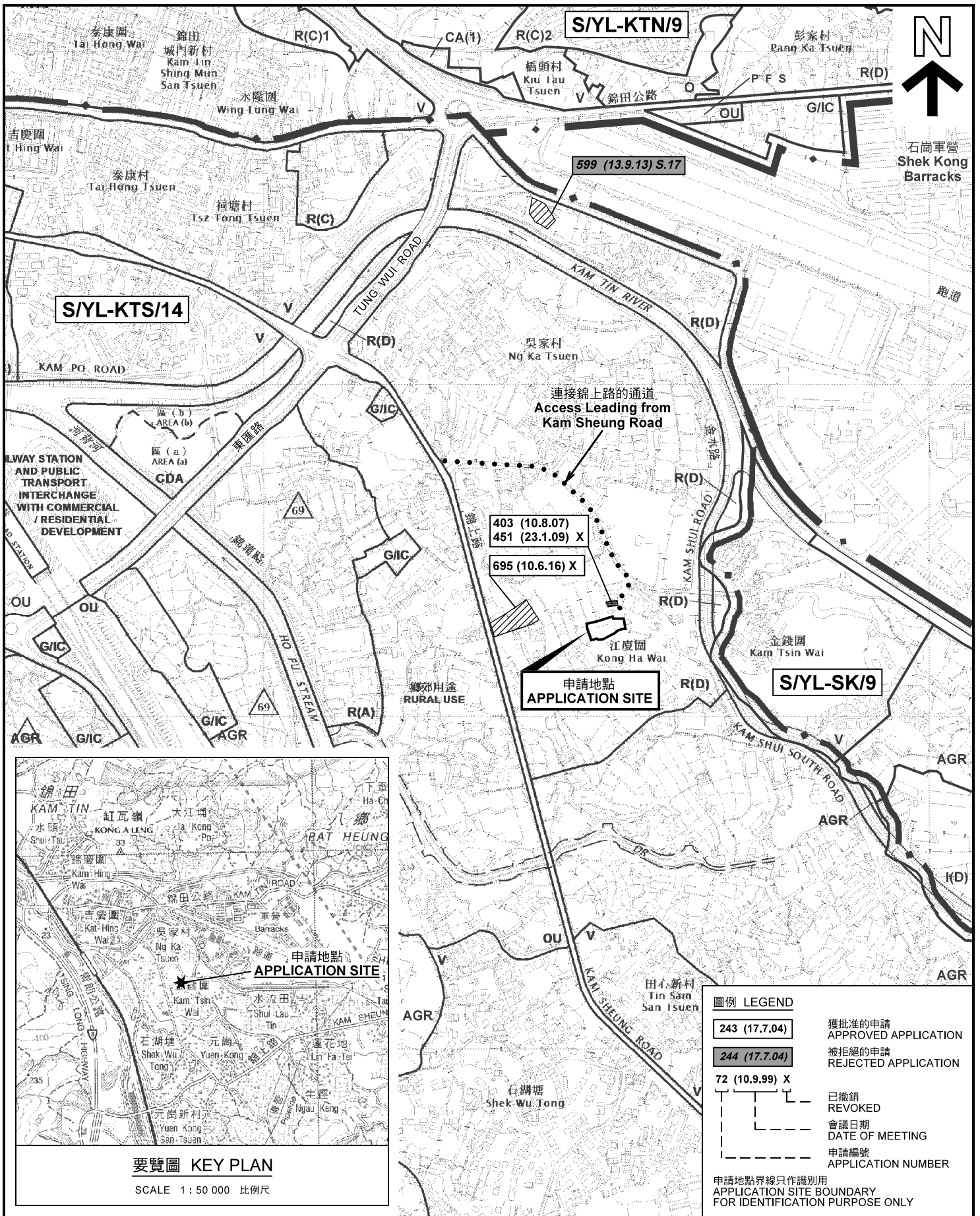
DRAWING FILE :

© COPYRIGHT RESERVED

(摘錄自申請人於 26.9.2018 呈交的申請書)
 (Extract from Applicant's Submission of 26.9.2018)

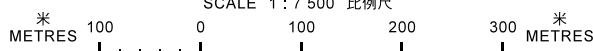
參考編號
 REFERENCE No.
 A/YL-KTS/805

繪圖 DRAWING
 A-5



位置圖及同類申請 LOCATION PLAN WITH SIMILAR APPLICATIONS

臨時「貯存建材倉庫」用途的規劃許可續期（為期3年）
元朗八鄉錦上路江廈圍丈量約份
第106約地段第1336號A分段（部分）
RENEWAL OF PLANNING APPROVAL FOR TEMPORARY
"WAREHOUSE FOR STORAGE OF BUILDING MATERIAL PRODUCTS"
FOR A PERIOD OF 3 YEARS
LOT 1336 S.A (PART) IN D.D. 106, KONG HA WAI,
KAM SHEUNG ROAD, PAT HEUNG, YUEN LONG
SCALE 1 : 7 500 比例尺



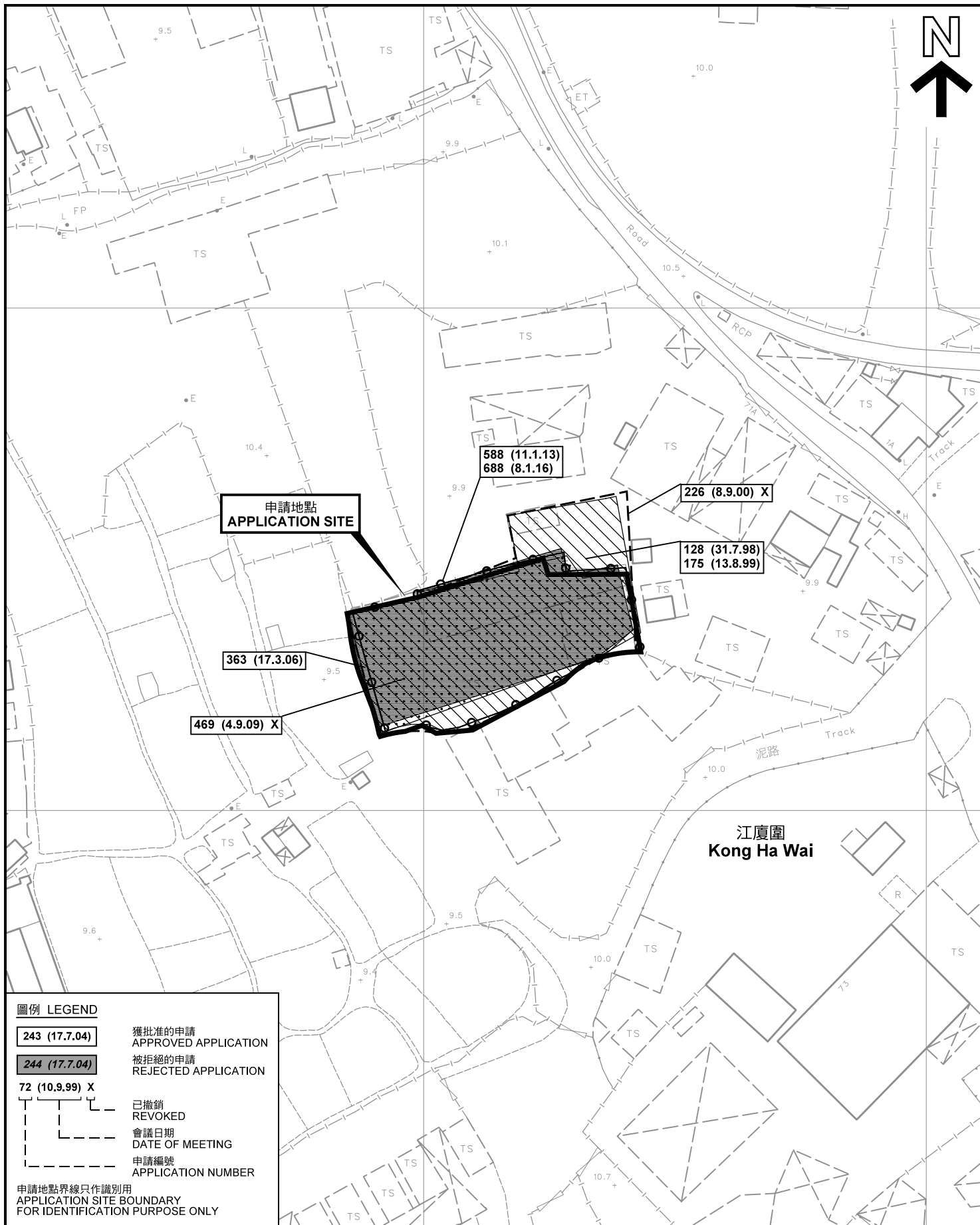
本摘要圖於2018年10月24日擬備，
所根據的資料為於2017年11月3日
展示的分區計劃大綱圖編號 S/YL-KTS/14
EXTRACT PLAN PREPARED ON 24.10.2018
BASED ON OUTLINE ZONING PLAN No.
S/YL-KTS/14 EXHIBITED ON 3.11.2017

**規劃署
PLANNING
DEPARTMENT**



參考編號
REFERENCE No.
A/YL-KTS/805

圖 PLAN
A-1a



圖例 LEGEND

- 243 (17.7.04) 獲批准的申請
APPROVED APPLICATION
- 244 (17.7.04) 被拒絕的申請
REJECTED APPLICATION
- 72 (10.9.99) X 已撤銷
REVOKED
- 會議日期
DATE OF MEETING
- 申請編號
APPLICATION NUMBER

申請地點界線只作識別用
APPLICATION SITE BOUNDARY
FOR IDENTIFICATION PURPOSE ONLY

先前申請圖 PREVIOUS APPLICATION PLAN

臨時「貯存建材倉庫」用途的規劃許可續期（為期3年）
元朗八鄉錦上路江廈圍丈量約份
第106約地段第1336號A分段（部分）

RENEWAL OF PLANNING APPROVAL FOR TEMPORARY
"WAREHOUSE FOR STORAGE OF BUILDING MATERIAL PRODUCTS"
FOR A PERIOD OF 3 YEARS
LOT 1336 S.A (PART) IN D.D. 106, KONG HA WAI,
KAM SHEUNG ROAD, PAT HEUNG, YUEN LONG
SCALE 1 : 1 000 比例尺

米 METRES 20 0 20 40 米 METRES

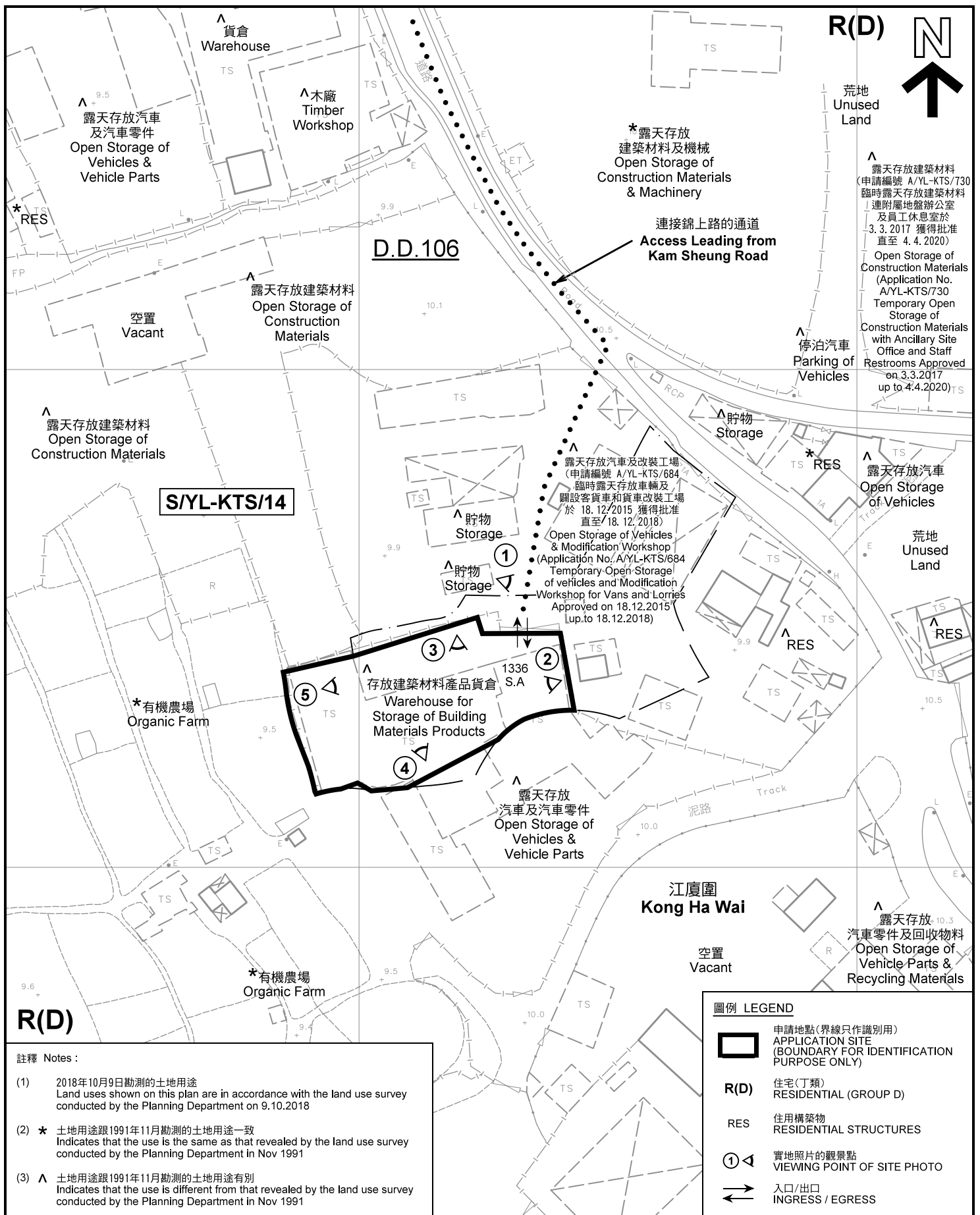
規劃署
PLANNING
DEPARTMENT



參考編號
REFERENCE No.
A/YL-KTS/805

圖 PLAN
A-1b

本摘要圖於2018年10月24日擬備，所根據的資料為測量圖編號 6-NE-12D 及 6-NE-13C
EXTRACT PLAN PREPARED ON 24.10.2018
BASED ON SURVEY SHEETS No.
6-NE-12D & 6-NE-13C



註釋 Notes :

- (1) 2018年10月9日勘測的土地用途
Land uses shown on this plan are in accordance with the land use survey conducted by the Planning Department on 9.10.2018
- (2) * 土地用途跟1991年11月勘測的土地用途一致
Indicates that the use is the same as that revealed by the land use survey conducted by the Planning Department in Nov 1991
- (3) ^ 土地用途跟1991年11月勘測的土地用途有別
Indicates that the use is different from that revealed by the land use survey conducted by the Planning Department in Nov 1991

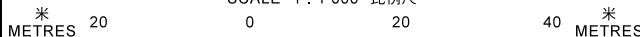
圖例 LEGEND

- 申請地點(界線只作識別用)
APPLICATION SITE (BOUNDARY FOR IDENTIFICATION PURPOSE ONLY)
- R(D)** 住宅(丁類)
RESIDENTIAL (GROUP D)
- RES** 住用構築物
RESIDENTIAL STRUCTURES
- 實地照片的觀景點
VIEWING POINT OF SITE PHOTO
- 入口/出口
INGRESS / EGRESS

平面圖 SITE PLAN

臨時「貯存建材倉庫」用途的規劃許可續期 (為期3年)
元朗八鄉錦上路江廈圍丈量約份
第106約地段第1336號A分段 (部分)
RENEWAL OF PLANNING APPROVAL FOR TEMPORARY
"WAREHOUSE FOR STORAGE OF BUILDING MATERIAL PRODUCTS"
FOR A PERIOD OF 3 YEARS
LOT 1336 S.A (PART) IN D.D. 106, KONG HA WAI,
KAM SHEUNG ROAD, PAT HEUNG, YUEN LONG
SCALE 1 : 1 000 比例尺

本摘要圖於2018年11月2日擬備, 所根據的資料為測量圖編號 6-NE-12D 及 6-NE-13C
EXTRACT PLAN PREPARED ON 2.11.2018
BASED ON SURVEY SHEETS No. 6-NE-12D & 6-NE-13C

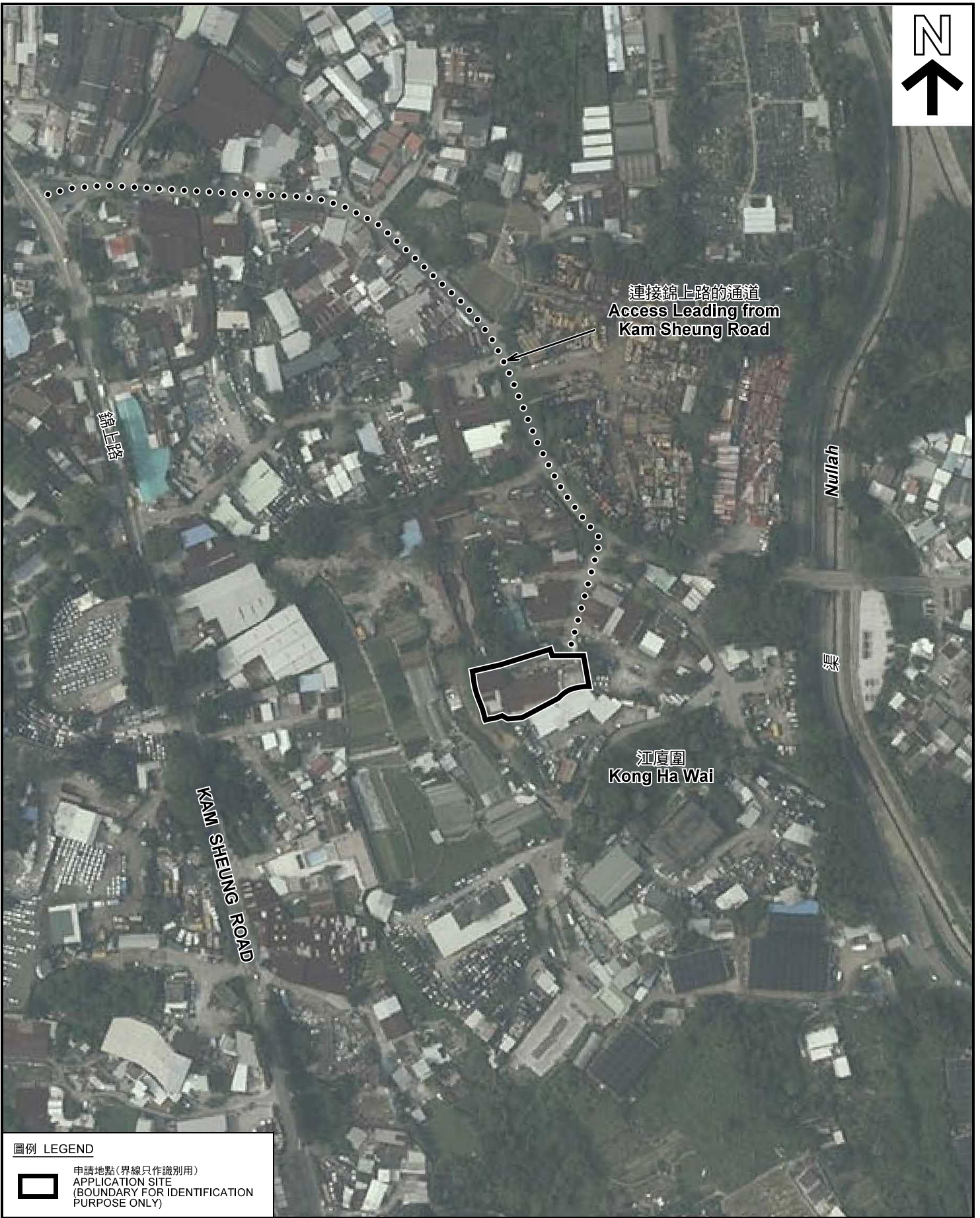


**規劃署
PLANNING
DEPARTMENT**



參考編號
REFERENCE No.
A/YL-KTS/805

**圖 PLAN
A-2**



圖例 LEGEND



申請地點(界線只作識別用)
APPLICATION SITE
(BOUNDARY FOR IDENTIFICATION
PURPOSE ONLY)

本摘要圖於2018年10月25日擬備，所根據的資料為地政總署於2017年4月29日拍得的航攝照片編號 E023520C
EXTRACT PLAN PREPARED ON 25.10.2018
BASED ON AERIAL PHOTO No.
E023520C TAKEN ON 29.4.2017
BY LANDS DEPARTMENT

航攝照片 AERIAL PHOTO

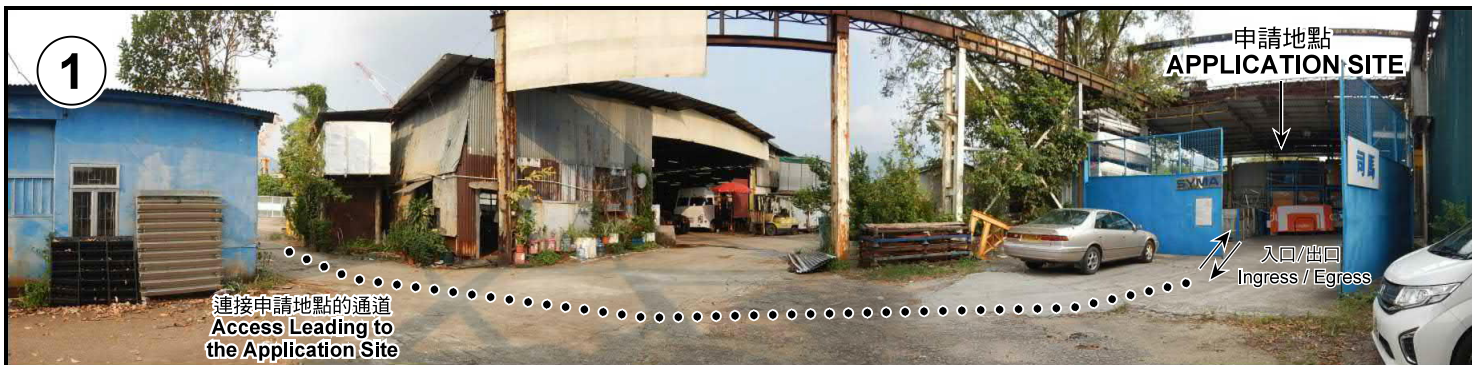
臨時「貯存建材倉庫」用途的規劃許可續期(為期3年)
元朗八鄉錦上路江廈圍丈量約份
第106約地段第1336號A分段(部分)
RENEWAL OF PLANNING APPROVAL FOR TEMPORARY
"WAREHOUSE FOR STORAGE OF BUILDING MATERIAL PRODUCTS"
FOR A PERIOD OF 3 YEARS
LOT 1336 S.A (PART) IN D.D. 106, KONG HA WAI,
KAM SHEUNG ROAD, PAT HEUNG, YUEN LONG

規劃署
PLANNING
DEPARTMENT



參考編號
REFERENCE No.
A/YL-KTS/805

圖 PLAN
A-3



申請地點界線只作識別用 APPLICATION SITE BOUNDARY FOR IDENTIFICATION PURPOSE ONLY

實地照片 SITE PHOTOS

臨時「貯存建材倉庫」用途的規劃許可續期（為期3年）
元朗八鄉錦上路江廈圍丈量約份
第106約地段第1336號A分段（部分）

RENEWAL OF PLANNING APPROVAL FOR TEMPORARY
"WAREHOUSE FOR STORAGE OF BUILDING MATERIAL PRODUCTS"
FOR A PERIOD OF 3 YEARS
LOT 1336 S.A (PART) IN D.D. 106, KONG HA WAI,
KAM SHEUNG ROAD, PAT HEUNG, YUEN LONG

規劃署
**PLANNING
DEPARTMENT**



參考編號
REFERENCE No.
A/YL-KTS/805

圖 PLAN
A-4

本圖於2018年10月26日擬備，所根據的資料為攝於2018年10月9日的實地照片
PLAN PREPARED ON 26.10.2018
BASED ON SITE PHOTOS
TAKEN ON 9.10.2018