

DEVELOPMENT PARAMETERS

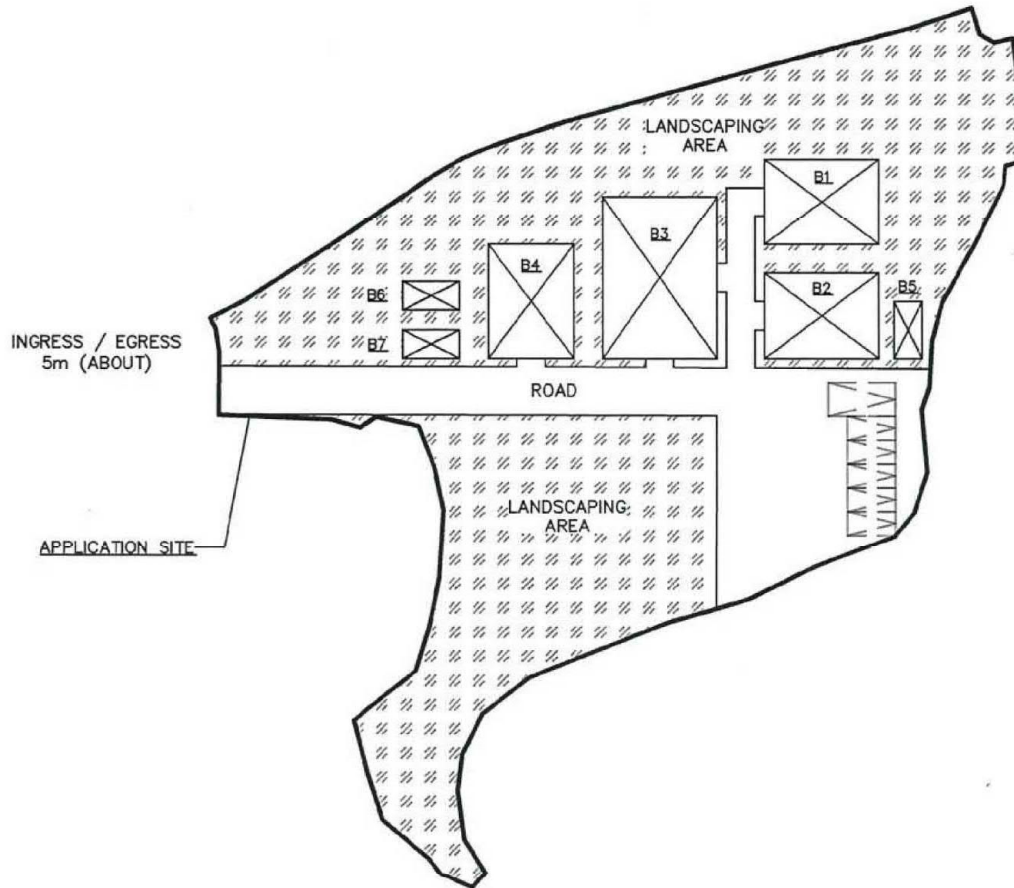
APPLICATION SITE AREA: 3,685m² (ABOUT)
 COVERED AREA: 594m² (ABOUT)
 UNCOVERED AREA: 3,091m² (ABOUT)

NO. OF STRUCTURE: 7
 DOMESTIC GFA: N/A
 NON-DOMESTIC GFA: 594m² (ABOUT)
 BUILDING HEIGHT: 3.5m – 4m (ABOUT)
 NO. OF STOREY: 1

NO. OF PRIVATE CAR PARKING SPACE (2.5m X 5m): 5
 NO. OF L/UL SPACE FOR LGV (3.5m X 7m): 1

| STRUCTURE | USE | COVERED AREA | GFA | BUILDING HEIGHT |
|-----------|---|---------------------------|---------------------------|-----------------------|
| B1 | SHOP & SERVICES WITH ANCILLARY OFFICE & STAFF CANTEEN | 108m ² (ABOUT) | 108m ² (ABOUT) | 4m (ABOUT)(1-STORY) |
| B2 | SHOP & SERVICES WITH ANCILLARY OFFICE | 108m ² (ABOUT) | 108m ² (ABOUT) | 4m (ABOUT)(1-STORY) |
| B3 | SHOP & SERVICES WITH ANCILLARY OFFICE | 216m ² (ABOUT) | 216m ² (ABOUT) | 4m (ABOUT)(1-STORY) |
| B4 | SHOP & SERVICES WITH ANCILLARY OFFICE & MANAGEMENT OFFICE | 108m ² (ABOUT) | 108m ² (ABOUT) | 4m (ABOUT)(1-STORY) |
| B5* | METER ROOM | 18m ² (ABOUT) | 18m ² (ABOUT) | 3.5m (ABOUT)(1-STORY) |
| B6* | FS WATER TANK AND CONTROL PANEL | 18m ² (ABOUT) | 18m ² (ABOUT) | 3.5m (ABOUT)(1-STORY) |
| B7* | WASHROOM | 18m ² (ABOUT) | 18m ² (ABOUT) | 3.5m (ABOUT)(1-STORY) |
| TOTAL | | 594m ² (ABOUT) | 594m ² (ABOUT) | |

*CONTAINER-CONVERTED STRUCTURE



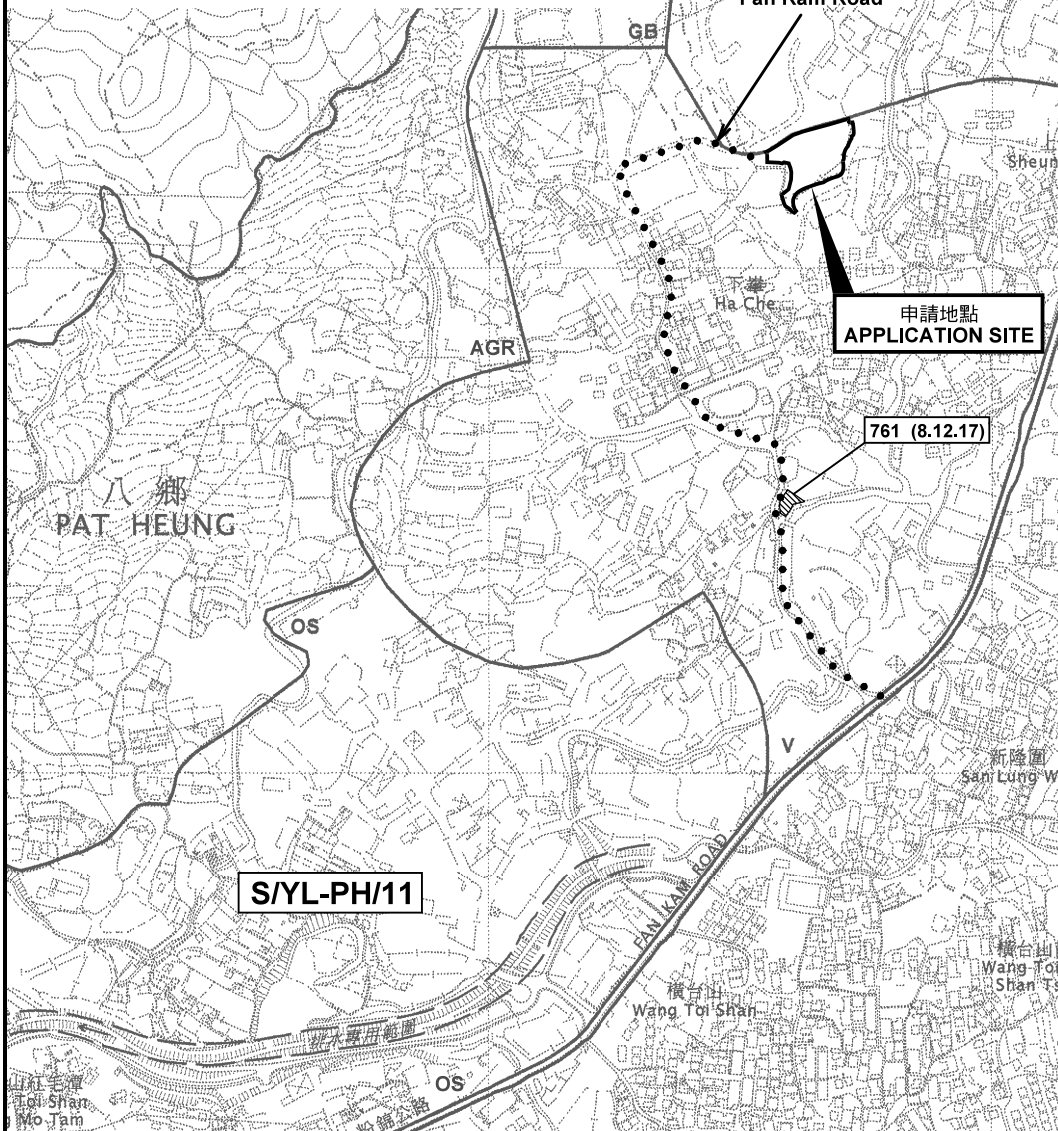
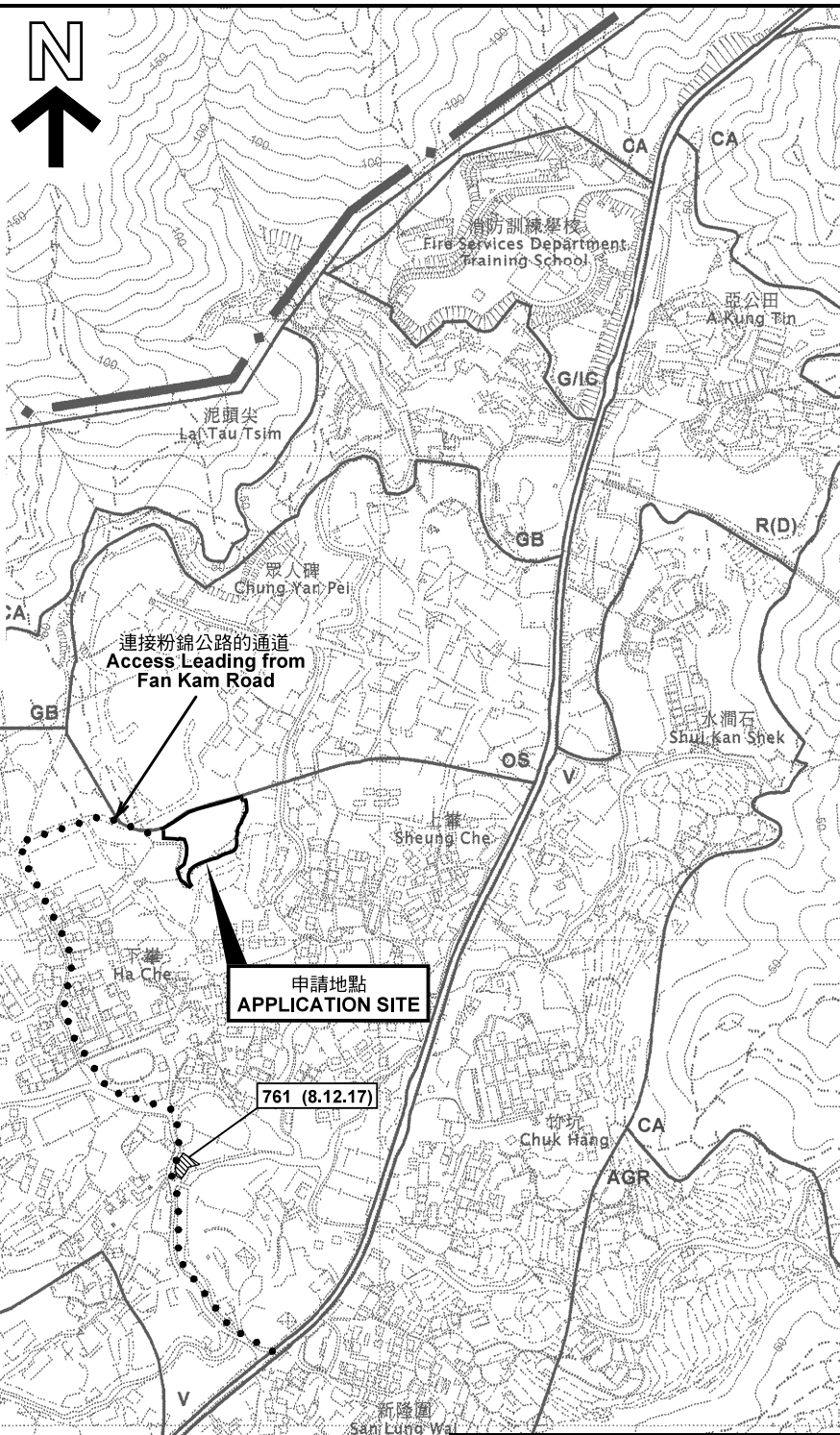
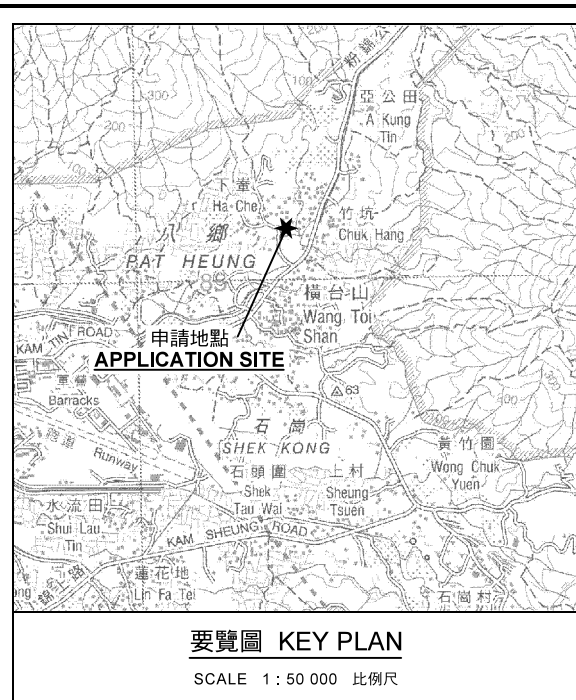
LEGEND

| | |
|--|------------------|
| | STRUCTURE |
| | PARKING SPACE |
| | LANDSCAPING AREA |

| | |
|---|------------|
| Drawing No. | Ver. |
| P02 | 03 |
| Project | |
| PROPOSED TEMPORARY SHOP AND SERVICES WITH ANCILLARY STAFF CANTEEN FOR A PERIOD OF 5 YEARS | |
| LOT 893 AND VARIOUS LOTS IN D.D. 111 | |
| Drawing Title | |
| LAYOUT PLAN | |
| Scale of A4 | |
| INDICATIVE ONLY | |
| Drawn | Date |
| | 4.9.2019 |
| Revised | Date |
| | 13.11.2019 |

(摘錄自申請人於 15. 11. 2019 呈交的進一步資料)
 (Extract from Applicant's Further Information Submitted on 15.11.2019)

| | |
|--------------------------------------|-------------------|
| 參考編號 REFERENCE No. A/YL-PH/818 | 繪圖 DRAWING A-1 |
|--------------------------------------|-------------------|



圖例 LEGEND

- 243 (17.7.04)** 獲批准的申請 APPROVED APPLICATION
- 244 (17.7.04)** 被拒絕的申請 REJECTED APPLICATION
- 72 (10.9.99) X** 已撤銷 REVOKED
- 會議日期 DATE OF MEETING
- 申請編號 APPLICATION NUMBER

申請地點界線只作識別用
APPLICATION SITE BOUNDARY
FOR IDENTIFICATION PURPOSE ONLY

位置圖及同類申請 LOCATION PLAN WITH SIMILAR APPLICATION

擬議臨時商店及服務行業連附屬員工飯堂 (為期5年)
元朗八鄉丈量約份第111約地段第893號 (部分)、
894號A分段 (部分)、894號B分段 (部分)、895號 (部分) 及3083號 (部分)
PROPOSED TEMPORARY SHOP AND SERVICES
WITH ANCILLARY STAFF CANTEEN FOR A PERIOD OF 5 YEARS
LOT 893 (PART), 894 S.A (PART), 894 S.B (PART),
895 (PART) AND 3083 (PART) IN D.D. 111, PAT HEUNG, YUEN LONG

SCALE 1 : 7 500 比例尺
米 100 0 100 200 300 米
METRES

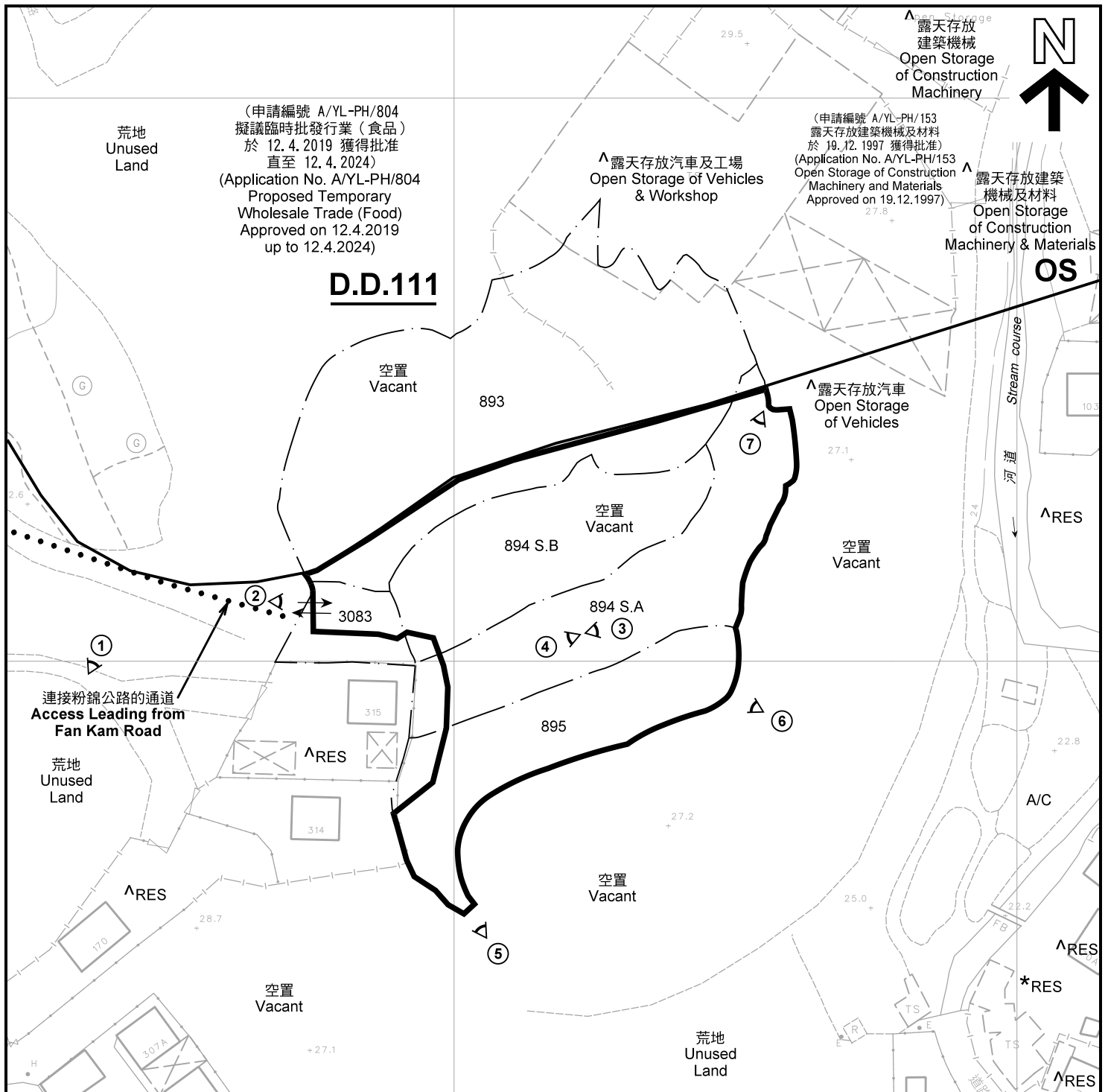
本摘要圖於2019年12月16日擬備，
所根據的資料為於2006年10月17日
核准的分區計劃大綱圖編號 S/YL-PH/11
EXTRACT PLAN PREPARED ON 16.12.2019
BASED ON OUTLINE ZONING PLAN No.
S/YL-PH/11 APPROVED ON 17.10.2006

**規劃署
PLANNING
DEPARTMENT**



參考編號
REFERENCE No.
AYL-PH/818

**圖 PLAN
A-1**



(申請編號 A/YL-PH/804
擬議臨時批發行業(食品)
於 12.4.2019 獲得批准
直至 12.4.2024)
(Application No. A/YL-PH/804
Proposed Temporary
Wholesale Trade (Food)
Approved on 12.4.2019
up to 12.4.2024)

(申請編號 A/YL-PH/153
露天存放建築機械及材料
於 19.12.1997 獲得批准)
(Application No. A/YL-PH/153
Open Storage of Construction
Machinery and Materials
Approved on 19.12.1997)

D.D.111

OS

連接粉錦公路的通道
Access Leading from
Fan Kam Road

註釋 Notes :

- (1) 2019年9月17日勘測的土地用途
Land uses shown on this plan are in accordance with the land use survey conducted by the Planning Department on 17.9.2019
- (2) * 土地用途跟1991年12月勘測的土地用途一致
Indicates that the use is the same as that revealed by the land use survey conducted by the Planning Department in Dec 1991
- (3) ^ 土地用途跟1991年12月勘測的土地用途有別
Indicates that the use is different from that revealed by the land use survey conducted by the Planning Department in Dec 1991

圖例 LEGEND

- 申請地點(界線只作識別用)
APPLICATION SITE
(BOUNDARY FOR IDENTIFICATION
PURPOSE ONLY)
- V** 鄉村式發展
VILLAGE TYPE DEVELOPMENT
- OS** 露天貯物
OPEN STORAGE
- RES** 住用構築物
RESIDENTIAL STRUCTURES
- A/C** 常耕農地
CULTIVATED AGRICULTURAL LAND
- 實地照片的觀景點
VIEWING POINT OF SITE PHOTO
- 入口/出口
INGRESS / EGRESS

平面圖 SITE PLAN

擬議臨時商店及服務行業連附員工飯堂(為期5年)
元朗八鄉丈量約份第111約地段第893號(部分)、
894號A分段(部分)、894號B分段(部分)、895號(部分)及3083號(部分)
PROPOSED TEMPORARY SHOP AND SERVICES
WITH ANCILLARY STAFF CANTEEN FOR A PERIOD OF 5 YEARS
LOT 893 (PART), 894 S.A (PART), 894 S.B (PART),
895 (PART) AND 3083 (PART) IN D.D. 111, PAT HEUNG, YUEN LONG

SCALE 1 : 1 000 比例尺

米 20 0 20 40 米
METRES

本摘要圖於2019年12月18日擬備, 所根據的
資料為測量圖編號 6-NE-9A & B
EXTRACT PLAN PREPARED ON 18.12.2019
BASED ON SURVEY SHEET No.
6-NE-9A & B

**規劃署
PLANNING
DEPARTMENT**



參考編號
REFERENCE No.
A/YL-PH/818

**圖 PLAN
A-2**

泥頭尖
LAI TAU TSIM



眾人碑
CHUNG YAN PEI

連接粉錦公路的通道
Access Leading from
Fan Kam Road

上峯
SHEUNG CHE

下峯
HA CHE

富盛花園
Fu Shing Garden

上峯村
SHEUNG CHE
TSUEN

圖例 LEGEND



申請地點(界線只作識別用)
APPLICATION SITE
(BOUNDARY FOR IDENTIFICATION
PURPOSE ONLY)

本摘要圖於2019年12月16日擬備，所根據
的資料為地政總署於2018年1月3日拍得
的航攝照片編號 E033271C
EXTRACT PLAN PREPARED ON 16.12.2019
BASED ON AERIAL PHOTO No.
E033271C TAKEN ON 3.1.2018
BY LANDS DEPARTMENT

航攝照片 AERIAL PHOTO

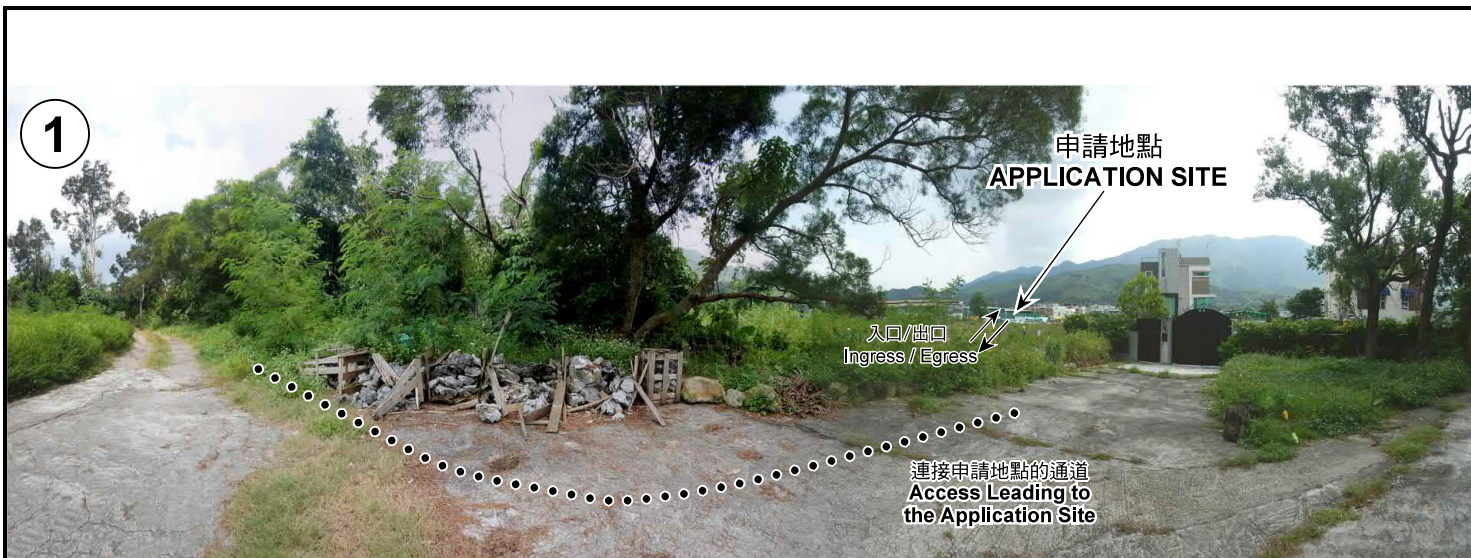
擬議臨時商店及服務行業連附屬員工飯堂(為期5年)
元朗八鄉丈量約份第111約地段第893號(部分)、
894號A分段(部分)、894號B分段(部分)、895號(部分)及3083號(部分)
PROPOSED TEMPORARY SHOP AND SERVICES
WITH ANCILLARY STAFF CANTEEN FOR A PERIOD OF 5 YEARS
LOT 893 (PART), 894 S.A (PART), 894 S.B (PART),
895 (PART) AND 3083 (PART) IN D.D. 111, PAT HEUNG, YUEN LONG

規劃署
PLANNING
DEPARTMENT



參考編號
REFERENCE No.
AYL-PH/818

圖 PLAN
A-3



申請地點界線只作識別用 APPLICATION SITE BOUNDARY FOR IDENTIFICATION PURPOSE ONLY

實地照片 SITE PHOTOS

本圖於2019年12月16日擬備，所根據的資料為攝於2019年9月17日的實地照片
 PLAN PREPARED ON 16.12.2019
 BASED ON SITE PHOTOS
 TAKEN ON 17.9.2019

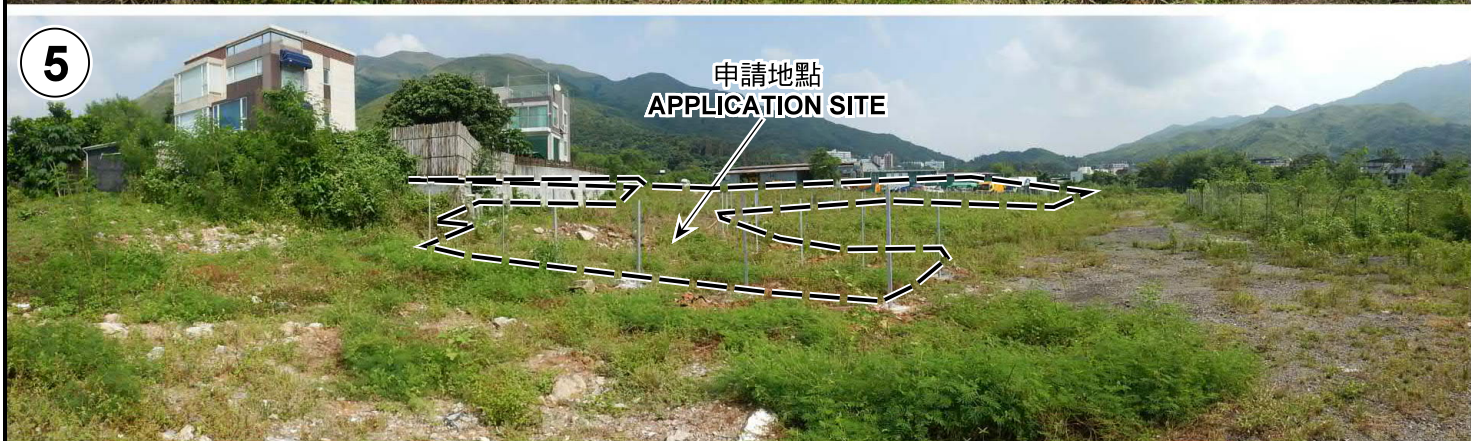
擬議臨時商店及服務行業連附屬員工飯堂（為期5年）
 元朗八鄉丈量約份第111約地段第893號（部分）、
 894號A分段（部分）、894號B分段（部分）、895號（部分）及3083號（部分）
 PROPOSED TEMPORARY SHOP AND SERVICES
 WITH ANCILLARY STAFF CANTEEN FOR A PERIOD OF 5 YEARS
 LOT 893 (PART), 894 S.A (PART), 894 S.B (PART),
 895 (PART) AND 3083 (PART) IN D.D. 111, PAT HEUNG, YUEN LONG

規劃署
 PLANNING
 DEPARTMENT



參考編號
 REFERENCE No.
 A/YL-PH/818

圖 PLAN
 A-4a



申請地點界線只作識別用 APPLICATION SITE BOUNDARY FOR IDENTIFICATION PURPOSE ONLY

實地照片 SITE PHOTOS

本圖於2019年12月16日擬備，所根據的資料為攝於2019年9月17日的實地照片
 PLAN PREPARED ON 16.12.2019
 BASED ON SITE PHOTOS
 TAKEN ON 17.9.2019

擬議臨時商店及服務行業連附屬員工飯堂（為期5年）
 元朗八鄉丈量約份第111約地段第893號（部分）、
 894號A分段（部分）、894號B分段（部分）、895號（部分）及3083號（部分）
 PROPOSED TEMPORARY SHOP AND SERVICES
 WITH ANCILLARY STAFF CANTEEN FOR A PERIOD OF 5 YEARS
 LOT 893 (PART), 894 S.A (PART), 894 S.B (PART),
 895 (PART) AND 3083 (PART) IN D.D. 111, PAT HEUNG, YUEN LONG

規劃署
 PLANNING
 DEPARTMENT



參考編號
 REFERENCE No.
 A/YL-PH/818

圖 PLAN
 A-4b