

LEGEND:

- • — Application Site (Area = 1,626 sq. m.)
- ▨ Parking Spaces for Medium Goods Vehicles (12) (3.5m x 10.5m)
- ▧ Parking Spaces for Container Tractors (10) (3.5m x 6m)
- ▩ Parking Spaces for Staff/Visitors (2) (2.5m x 5m)

Top Bright Consultants Ltd.
 Drawing No. :TB/18/541/05

Layout Plan

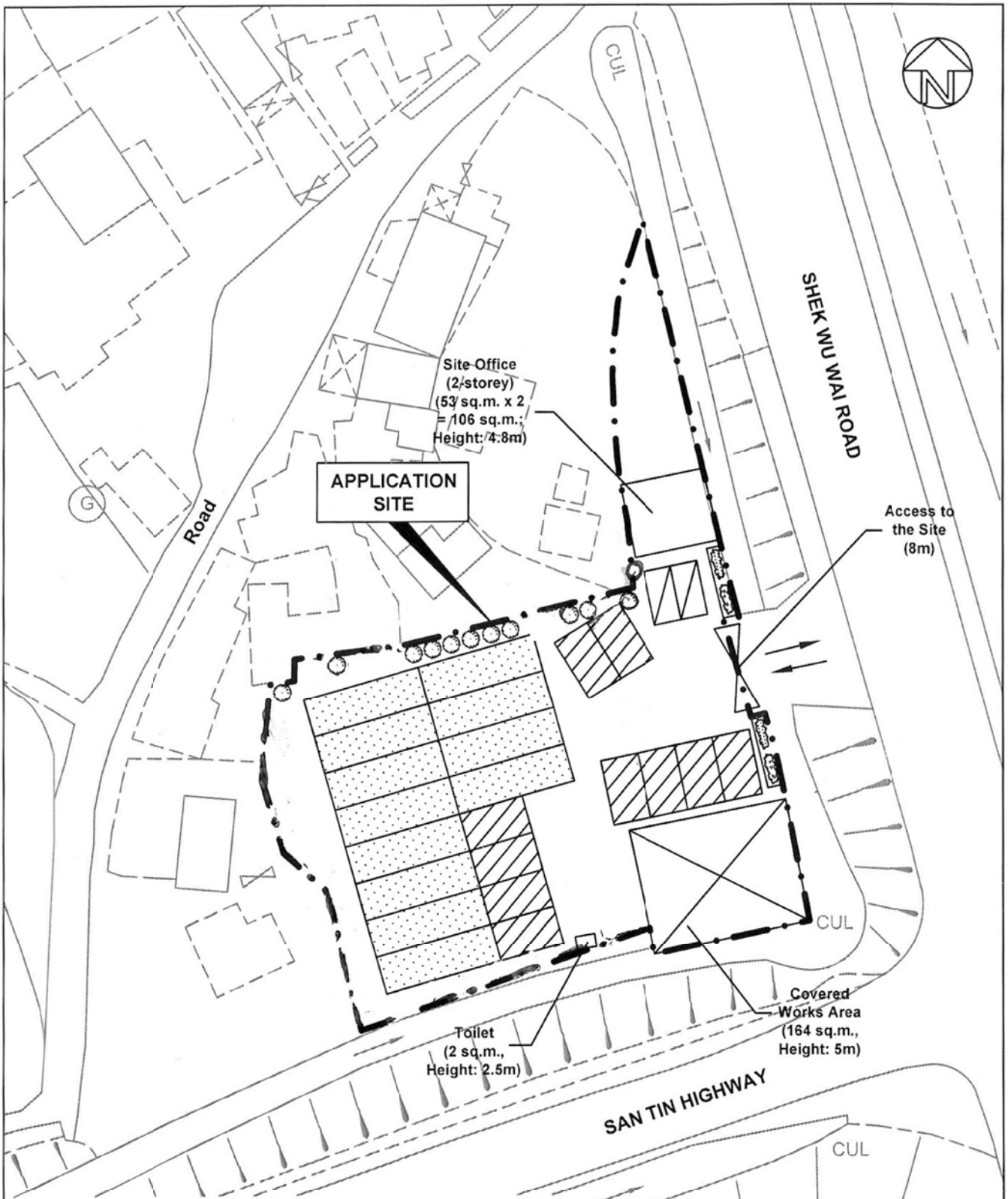
Lots 52RP(Part), 61(Part), 62(Part), 64RP(Part),
 65RP and Adjoining Government Land in DD105,
 San Tin, Yuen Long, N.T.

FIGURE 5
 FOR IDENTIFICATION PURPOSE
 Date: 4.6.2018
 Scale: 1 : 500 (A4)

(摘錄自申請人於1.8.2018呈交的進一步資料)
 (Extract from Applicant's Further
 Information Submitted on 1.8.2018)

參考編號
 REFERENCE No.
 A/YL-ST/528

繪圖 DRAWING
 A-1



Plant Schedule:

*Existing Trees to be Preserved		Spacing (centre to centre)	Size (height / span)	Quantity
TREES & SHURB	Ficus Benjamina	3000-4000mm	2750-3750mm	12
	Chrysalidocarpus-Lutescens	—	—	4

* Trees planted by the Applicant to comply with conditions under Application No. A/YL-ST/148



Top Bright Consultants Ltd.

Drawing No. :TB/18/541/06

Landscape and Tree Preservation Proposal

Lots 52RP(Part), 61(Part), 62(Part), 64RP(Part), 65RP and Adjoining Government Land in DD105, San Tin, Yuen Long, N.T.

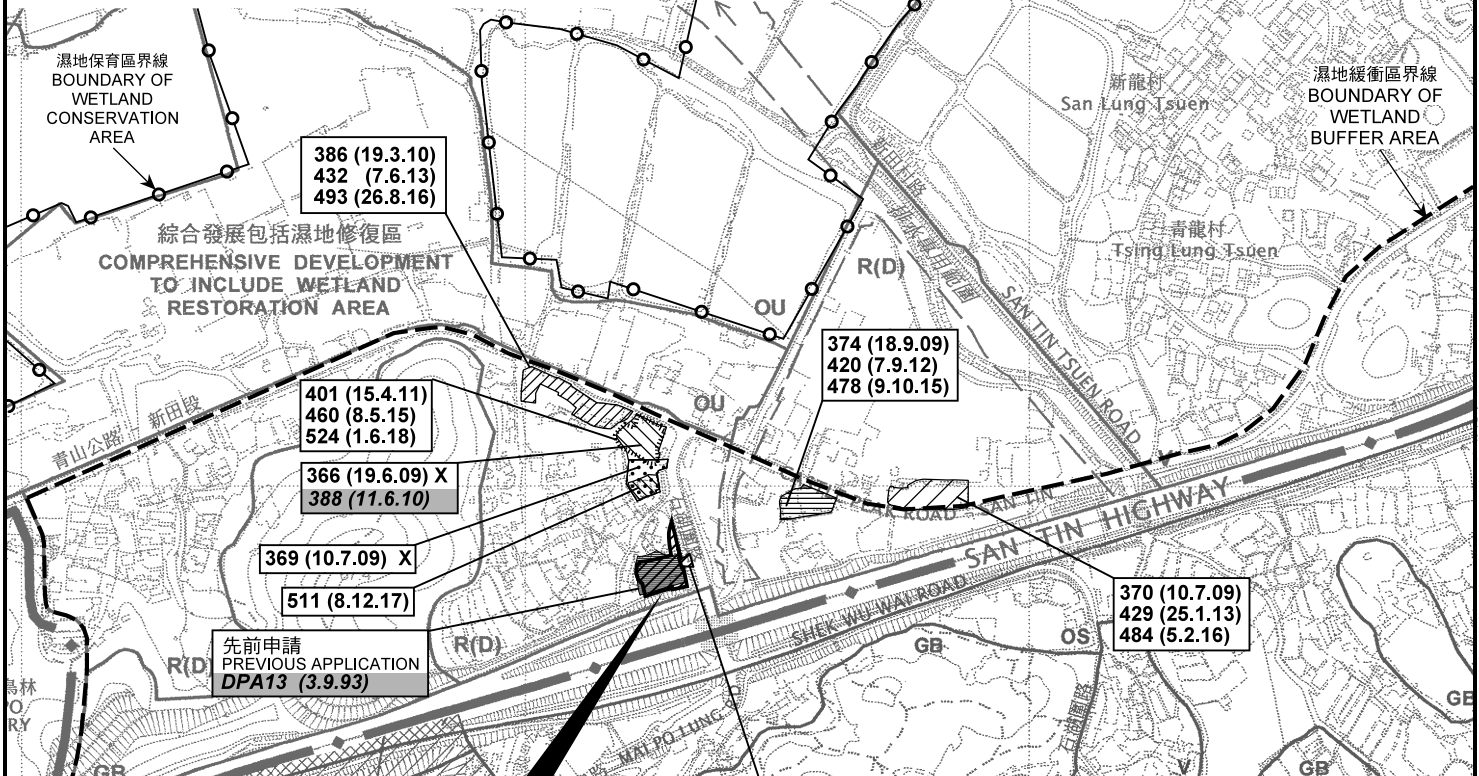
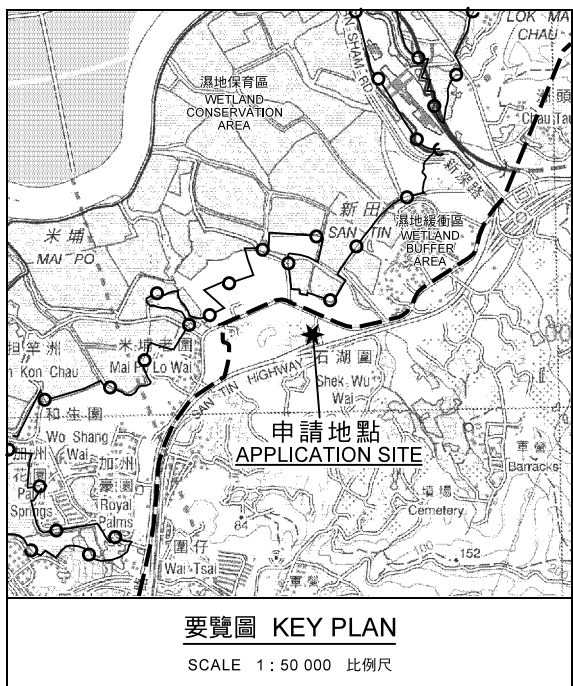
FIGURE 6

FOR IDENTIFICATION PURPOSE
Date: 4.6.2018
Scale: 1 : 500 (A4)

(摘錄自申請人於1.8.2018呈交的進一步資料)
(Extract from Applicant's Further Information Submitted on 1.8.2018)

參考編號
REFERENCE No.
A/YL-ST/528

繪圖 DRAWING
A-2



圖例 LEGEND

243 (17.7.04)	獲批准的申請 APPROVED APPLICATION
244 (17.7.04)	被拒絕的申請 REJECTED APPLICATION
72 (10.9.99) X	已撤銷 REVOKED
---	會議日期 DATE OF MEETING
---	申請編號 APPLICATION NUMBER

申請地點界線只作識別用
APPLICATION SITE BOUNDARY
FOR IDENTIFICATION PURPOSE ONLY


本摘要圖於2018年8月2日擬備，
所根據的資料為於2006年12月5日
核准的分區計劃大綱圖編號S/YL-ST/8
EXTRACT PLAN PREPARED ON 2.8.2018
BASED ON OUTLINE ZONING PLAN No.
S/YL-ST/8 APPROVED ON 5.12.2006

位置圖及同類申請 LOCATION PLAN WITH SIMILAR APPLICATIONS

臨時露天存放二手待售汽車場
(包括中型貨車及貨櫃拖頭，但不包括拖架) 及有蓋工場 (為期3年)
元朗新田丈量約份第105約地段第52號餘段 (部份)、第61號 (部份)、
第62號 (部份)、第64號餘段 (部份) 及第65號餘段和毗連政府土地
TEMPORARY OPEN STORAGE OF SECOND HAND MOTOR VEHICLES
(INCLUDING MEDIUM GOODS VEHICLES AND
CONTAINER TRACTORS BUT EXCLUDING TRAILERS)
FOR SALE AND A COVERED WORKS AREA FOR A PERIOD OF 3 YEARS
LOTS 52 RP (PART), 61 (PART), 62 (PART), 64 RP (PART) AND 65 RP
IN D.D. 105 AND ADJOINING GOVERNMENT LAND, SAN TIN, YUEN LONG
SCALE 1 : 7 500 比例尺

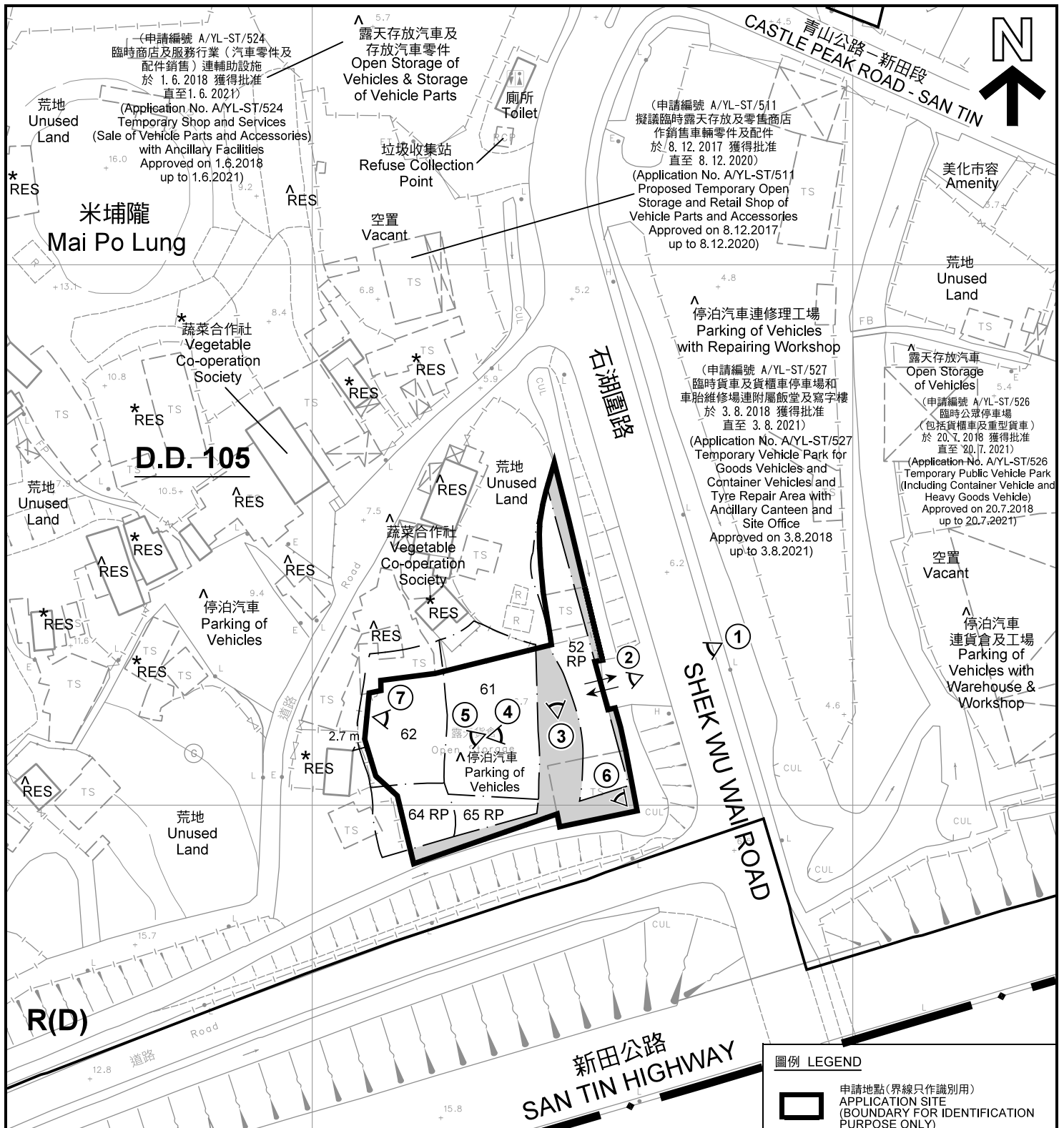
米 100 0 100 200 300 米
METRES

**規劃署
PLANNING
DEPARTMENT**



參考編號
REFERENCE No.
A/YL-ST/528

**圖 PLAN
A-1**



註釋 Notes:

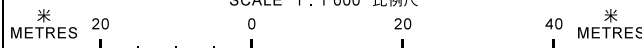
- (1) 2018年6月29日勘測的土地用途
Land uses shown on this plan are in accordance with the land use survey conducted by the Planning Department on 29.6.2018
- (2) * 土地用途跟1992年3月勘測的土地用途一致
Indicates that the use is the same as that revealed by the land use survey conducted by the Planning Department in Mar 1992
- (3) ^ 土地用途跟1992年3月勘測的土地用途有別
Indicates that the use is different from that revealed by the land use survey conducted by the Planning Department in Mar 1992

圖例 LEGEND

- 申請地點(界線只作識別用)
APPLICATION SITE
(BOUNDARY FOR IDENTIFICATION PURPOSE ONLY)
- R(D)** 住宅(丁類)
RESIDENTIAL (GROUP D)
- G.L.** 政府土地
GOVERNMENT LAND
- RES** 住用構築物
RESIDENTIAL STRUCTURES
- 實地照片的觀景點
VIEWING POINT OF SITE PHOTO
- 入口/出口
INGRESS / EGRESS

平面圖 SITE PLAN

臨時露天存放二手待售汽車場
(包括中型貨車及貨櫃拖頭, 但不包括拖架) 及有蓋工場 (為期3年)
元朗新田丈量約份第105約地段第52號餘段(部份)、第61號(部份)、
第62號(部份)、第64號餘段(部份)及第65號餘段和毗連政府土地
TEMPORARY OPEN STORAGE OF SECOND HAND MOTOR VEHICLES
(INCLUDING MEDIUM GOODS VEHICLES AND
CONTAINER TRACTORS BUT EXCLUDING TRAILERS)
FOR SALE AND A COVERED WORKS AREA FOR A PERIOD OF 3 YEARS
LOTS 52 RP (PART), 61 (PART), 62 (PART), 64 RP (PART) AND 65 RP
IN D.D. 105 AND ADJOINING GOVERNMENT LAND, SAN TIN, YUEN LONG
SCALE 1 : 1 000 比例尺



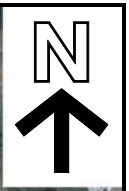
本摘要圖於2018年8月10日擬備, 所根據的資料為測量圖編號 2-SE-12B
EXTRACT PLAN PREPARED ON 10.8.2018
BASED ON SURVEY SHEET No.
2-SE-12B

規劃署
PLANNING
DEPARTMENT



參考編號
REFERENCE No.
A/YL-ST/528

圖 PLAN
A-2



圖例 LEGEND



申請地點(界線只作識別用)
APPLICATION SITE
(BOUNDARY FOR IDENTIFICATION
PURPOSE ONLY)

本摘要圖於2018年8月2日擬備，所根據的資料為地政總署於2018年4月10日拍得的航攝照片編號 E040769C
EXTRACT PLAN PREPARED ON 2.8.2018
BASED ON AERIAL PHOTO No.
E040769C TAKEN ON 10.4.2018
BY LANDS DEPARTMENT

航攝照片 AERIAL PHOTO

臨時露天存放二手待售汽車場
(包括中型貨車及貨櫃拖頭，但不包括拖架)及有蓋工場(為期3年)
元朗新田丈量約份第105約地段第52號餘段(部份)、第61號(部份)、
第62號(部份)、第64號餘段(部份)及第65號餘段和毗連政府土地
TEMPORARY OPEN STORAGE OF SECOND HAND MOTOR VEHICLES
(INCLUDING MEDIUM GOODS VEHICLES AND
CONTAINER TRACTORS BUT EXCLUDING TRAILERS)
FOR SALE AND A COVERED WORKS AREA FOR A PERIOD OF 3 YEARS
LOTS 52 RP (PART), 61 (PART), 62 (PART), 64 RP (PART) AND 65 RP
IN D.D. 105 AND ADJOINING GOVERNMENT LAND, SAN TIN, YUEN LONG

規劃署
PLANNING
DEPARTMENT



參考編號
REFERENCE No.
A/YL-ST/528

圖 PLAN
A-3

1



2



3



實地照片 SITE PHOTOS

本圖於2018年8月1日擬備，所根據的資料為攝於2018年6月9日的實地照片
PLAN PREPARED ON 1.8.2018
BASED ON SITE PHOTOS
TAKEN ON 9.6.2018

臨時露天存放二手待售汽車場
(包括中型貨車及貨櫃拖頭，但不包括拖架)及有蓋工場(為期3年)
元朗新田丈量約份第105約地段第52號餘段(部份)、第61號(部份)、
第62號(部份)、第64號餘段(部份)及第65號餘段和毗連政府土地
TEMPORARY OPEN STORAGE OF SECOND HAND MOTOR VEHICLES
(INCLUDING MEDIUM GOODS VEHICLES AND
CONTAINER TRACTORS BUT EXCLUDING TRAILERS)
FOR SALE AND A COVERED WORKS AREA FOR A PERIOD OF 3 YEARS
LOTS 52 RP (PART), 61 (PART), 62 (PART), 64 RP (PART) AND 65 RP
IN D.D. 105 AND ADJOINING GOVERNMENT LAND, SAN TIN, YUEN LONG

規劃署
PLANNING
DEPARTMENT



參考編號
REFERENCE No.
A/YL-ST/528

圖 PLAN
A-4a



實地照片 SITE PHOTOS

臨時露天存放二手待售汽車場
 (包括中型貨車及貨櫃拖頭, 但不包括拖架) 及有蓋工場 (為期3年)
 元朗新田丈量約份第105約地段第52號餘段 (部份)、第61號 (部份)、
 第62號 (部份)、第64號餘段 (部份) 及第65號餘段和毗連政府土地
 TEMPORARY OPEN STORAGE OF SECOND HAND MOTOR VEHICLES
 (INCLUDING MEDIUM GOODS VEHICLES AND
 CONTAINER TRACTORS BUT EXCLUDING TRAILERS)
 FOR SALE AND A COVERED WORKS AREA FOR A PERIOD OF 3 YEARS
 LOTS 52 RP (PART), 61 (PART), 62 (PART), 64 RP (PART) AND 65 RP
 IN D.D. 105 AND ADJOINING GOVERNMENT LAND, SAN TIN, YUEN LONG

本圖於2018年8月1日擬備, 所根據的資料為攝於2018年6月9日的實地照片
 PLAN PREPARED ON 1.8.2018
 BASED ON SITE PHOTOS
 TAKEN ON 9.6.2018

規劃署
**PLANNING
 DEPARTMENT**



參考編號
 REFERENCE No.
A/YL-ST/528

圖 PLAN
A-4b