

Legend:

- · - · -** Application Site (Area = 1,295 sq. m.)
- ▨** Open Storage of Vehicle Parts in Storage Rack
- ▤** Porch for Ancillary Workshop (Height: 2.5m - 5m)



Top Bright Consultants Ltd.

Drawing No. :TB/19/587/05

Layout Plan

Lots 460RP(Part) and 461RP(Part) in DD103,
Kam Tin Road, Kam Tin, Yuen Long, N.T.

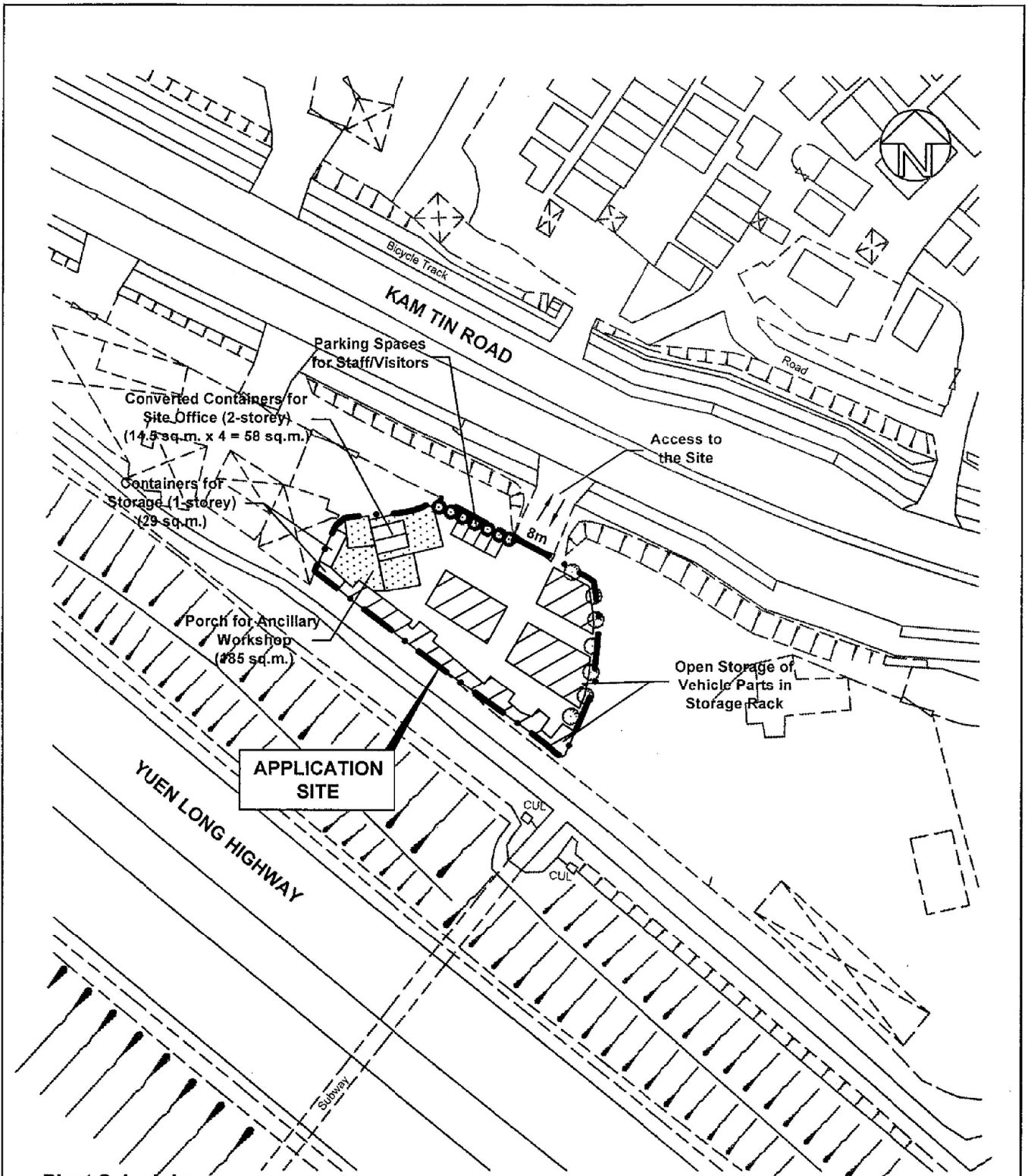
FIGURE 5

FOR IDENTIFICATION PURPOSE
Date: 1.4.2019
Scale: 1:1000

(摘錄自申請人於 2.5.2019 提交的申請書)
(Extract from Applicant's
Submission of 2.5.2019)


參考編號
REFERENCE No.
A/YL-KTS/821

繪圖 DRAWING
A-1



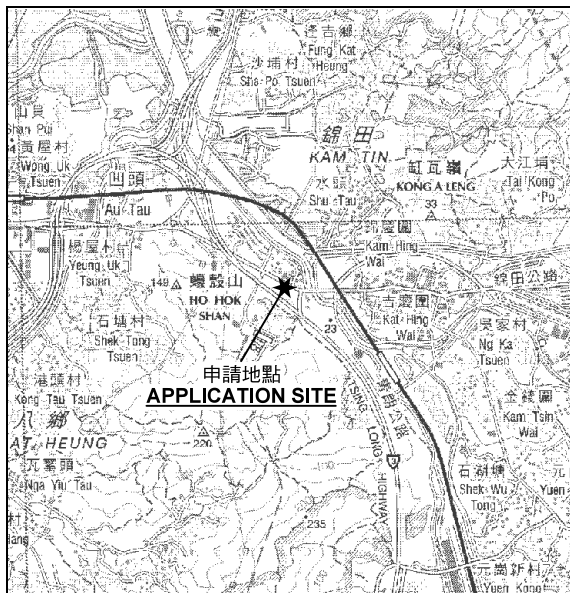
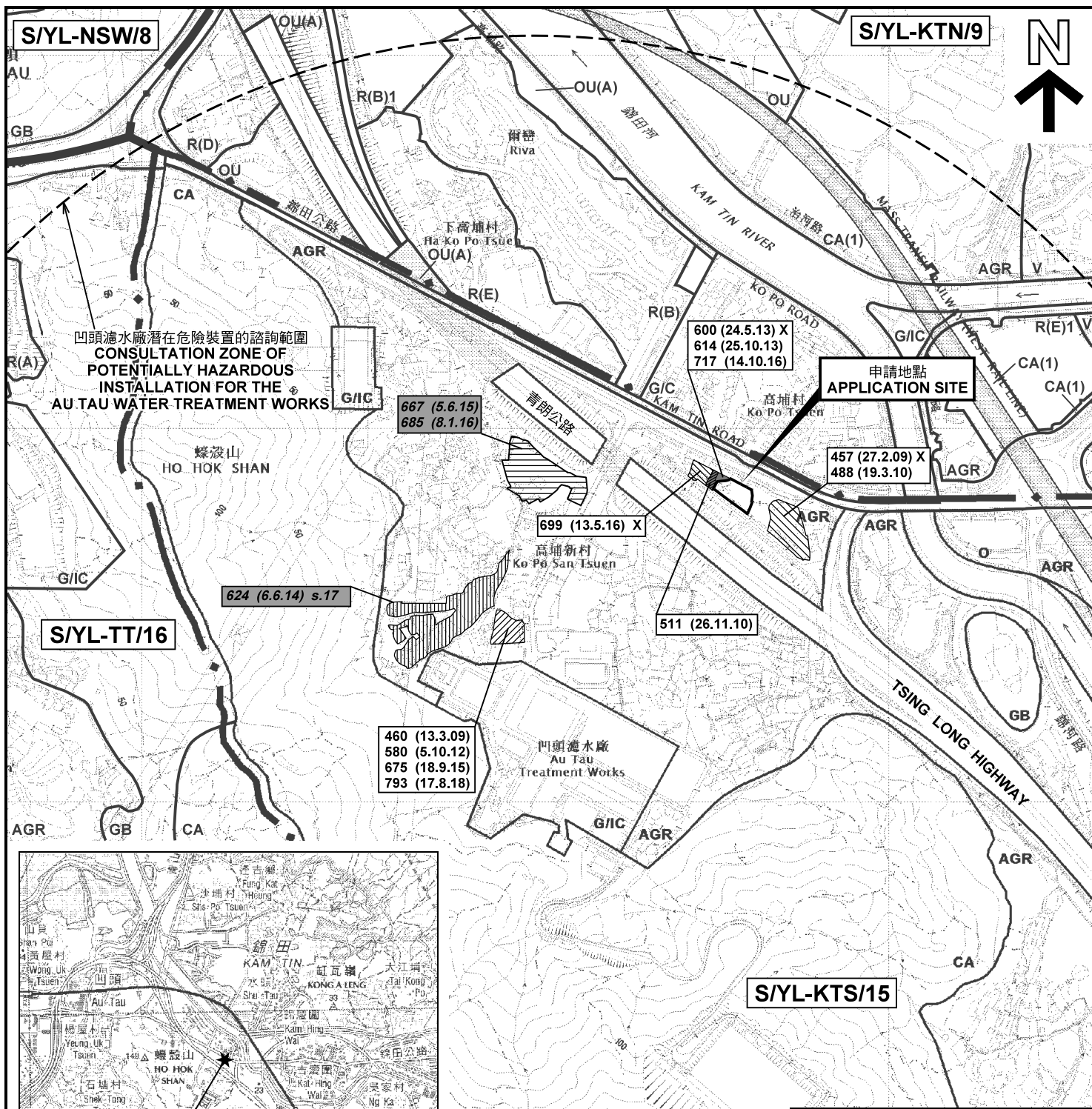
Plant Schedule:

Existing Trees to be Preserved:		Spacing (centre to centre)	Size (height / span)	Quantity
Bauhinia Blakeana 洋紫荊	☉	1000mm	2750-3750mm	7
Ficus Microcarpa 細葉榕	☉	3000-4000mm	2750-3750mm	7

 <p>Top Bright Consultants Ltd. Drawing No. :TB/19/587/06</p>	<p>Landscape and Tree Preservation Proposal Lots 460RP(Part) and 461RP(Part) in DD103, Kam Tin Road, Kam Tin, Yuen Long, N.T.</p>	<p>FIGURE 6 FOR IDENTIFICATION PURPOSE Date: 1.4.2019 Scale: 4:1 000</p>
---	--	---

(摘錄自申請人於 2.5.2019 提交的申請書)
(Extract from Applicant's Submission of 2.5.2019)

參考編號 REFERENCE No. A/YL-KTS/821	繪圖 DRAWING A-2
---------------------------------------	-------------------



要覽圖 KEY PLAN

SCALE 1: 50 000 比例尺

S/YL-KTS/15

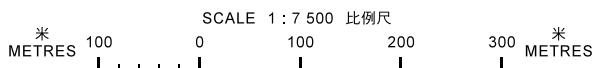
圖例 LEGEND

- 243 (17.7.04)** 獲批准的申請 APPROVED APPLICATION
- 244 (17.7.04)** 被拒絕的申請 REJECTED APPLICATION
- 72 (10.9.99) X** 已撤銷 REVOKED
- 會議日期 DATE OF MEETING
- 申請編號 APPLICATION NUMBER

申請地點界線只作識別用
APPLICATION SITE BOUNDARY
FOR IDENTIFICATION PURPOSE ONLY

位置圖及同類申請 LOCATION PLAN WITH SIMILAR APPLICATIONS

臨時露天存放汽車零件連附屬工場 (為期3年)
元朗錦田錦田公路丈量約份第103約
地段第460餘段 (部分) 及第461餘段 (部分)
TEMPORARY OPEN STORAGE OF VEHICLE PARTS
WITH ANCILLARY WORKSHOP FOR A PERIOD OF 3 YEARS
LOTS 460 RP (PART) AND 461 RP (PART) IN D.D.103,
KAM TIN ROAD, KAM TIN, YUEN LONG



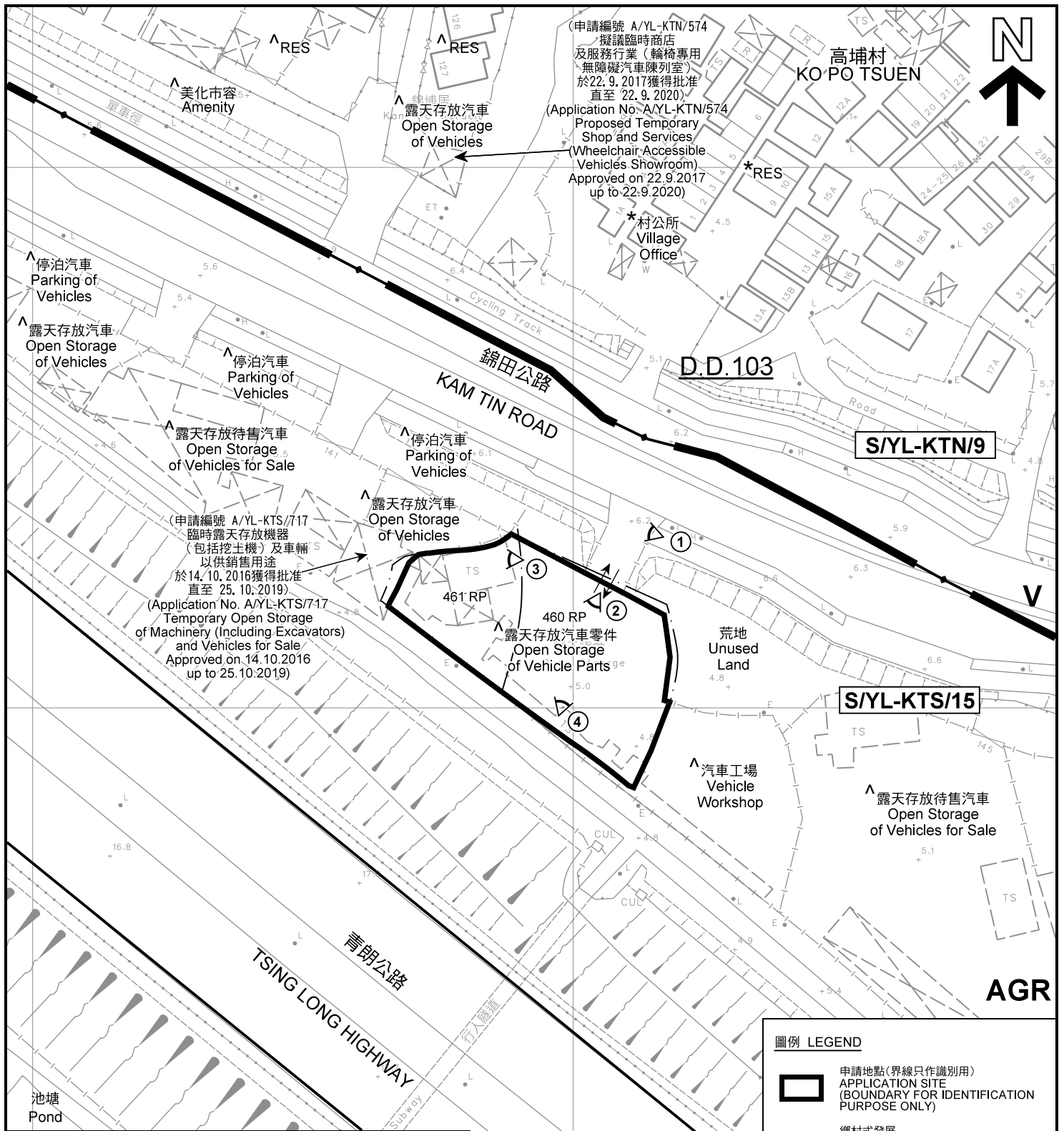
本摘要圖於2019年6月6日擬備，
所根據的資料為於2018年12月11日
核准的分區計劃大綱圖編號 S/YL-KTS/15
EXTRACT PLAN PREPARED ON 6.6.2019
BASED ON OUTLINE ZONING PLAN No.
S/YL-KTS/15 APPROVED ON 11.12.2018

規劃署
PLANNING
DEPARTMENT



參考編號
REFERENCE No.
A/YL-KTS/821

圖 PLAN
A-1a



註釋 Notes:

- (1) 2019年5月10日勘測的土地用途
Land uses shown on this plan are in accordance with the land use survey conducted by the Planning Department on 10.5.2019
- (2) * 土地用途跟1991年10月勘測的土地用途一致
Indicates that the use is the same as that revealed by the land use survey conducted by the Planning Department in Oct 1991
- (3) ^ 土地用途跟1991年10月勘測的土地用途有別
Indicates that the use is different from that revealed by the land use survey conducted by the Planning Department in Oct 1991

圖例 LEGEND

- 申請地點(界線只作識別用)
APPLICATION SITE (BOUNDARY FOR IDENTIFICATION PURPOSE ONLY)
- 鄉村式發展
VILLAGE TYPE DEVELOPMENT
- 農業
AGRICULTURE
- 住用構築物
RESIDENTIAL STRUCTURES
- 實地照片的觀景點
VIEWING POINT OF SITE PHOTO
- 入口/出口
INGRESS / EGRESS

平面圖 SITE PLAN

臨時露天存放汽車零件連附屬工場 (為期3年)
元朗錦田錦田公路丈量約份第103約
地段第460餘段 (部分) 及第461餘段 (部分)
TEMPORARY OPEN STORAGE OF VEHICLE PARTS
WITH ANCILLARY WORKSHOP FOR A PERIOD OF 3 YEARS
LOTS 460 RP (PART) AND 461 RP (PART) IN D.D.103,
KAM TIN ROAD, KAM TIN, YUEN LONG

SCALE 1 : 1 000 比例尺

米 20 0 20 40 米
METRES

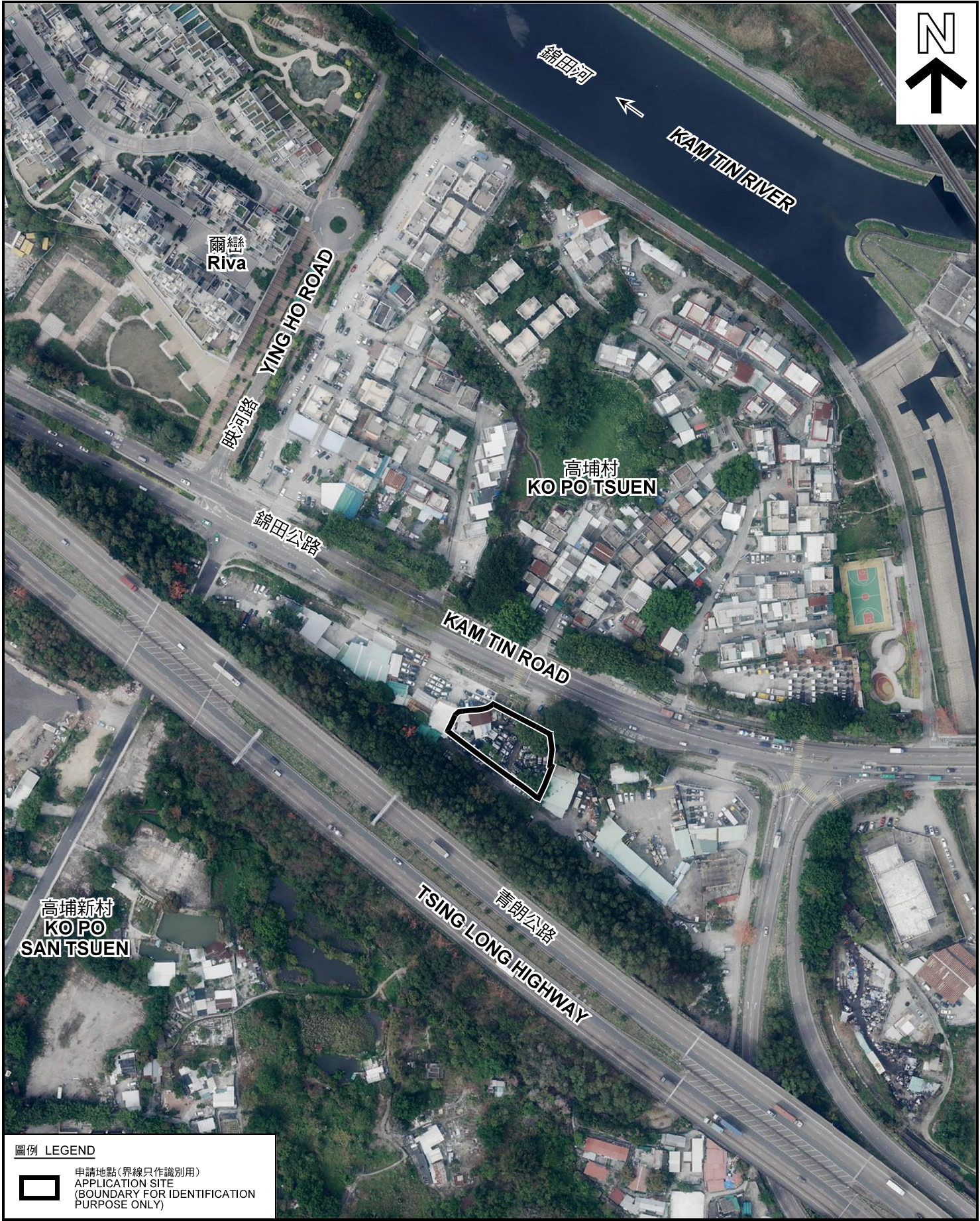
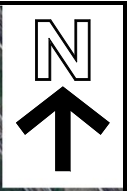
規劃署
PLANNING
DEPARTMENT



參考編號
REFERENCE No.
A/YL-KTS/821

圖 PLAN
A-2

本摘要圖於2019年5月23日擬備, 所根據的資料為測量圖編號 6-NE-11B
EXTRACT PLAN PREPARED ON 23.5.2019
BASED ON SURVEY SHEET No.
6-NE-11B



圖例 LEGEND



申請地點(界線只作識別用)
APPLICATION SITE
(BOUNDARY FOR IDENTIFICATION
PURPOSE ONLY)

本摘要圖於2019年5月24日擬備，所根據的資料為地政總署於2018年3月13日拍得的航攝照片編號 E035239C
EXTRACT PLAN PREPARED ON 24.5.2019
BASED ON AERIAL PHOTO No.
E035239C TAKEN ON 13.3.2018
BY LANDS DEPARTMENT

航攝照片 AERIAL PHOTO

臨時露天存放汽車零件連附屬工場 (為期3年)
元朗錦田錦田公路丈量約份第103約
地段第460餘段(部分)及第461餘段(部分)
TEMPORARY OPEN STORAGE OF VEHICLE PARTS
WITH ANCILLARY WORKSHOP FOR A PERIOD OF 3 YEARS
LOTS 460 RP (PART) AND 461 RP (PART) IN D.D.103,
KAM TIN ROAD, KAM TIN, YUEN LONG

規劃署
PLANNING
DEPARTMENT



參考編號
REFERENCE No.
AYL-KTS/821

圖 PLAN
A-3



申請地點界線只作識別用 APPLICATION SITE BOUNDARY FOR IDENTIFICATION PURPOSE ONLY

實地照片 SITE PHOTOS

臨時露天存放汽車零件連附屬工場（為期3年）
 元朗錦田錦田公路丈量約份第103約
 地段第460餘段（部分）及第461餘段（部分）
 TEMPORARY OPEN STORAGE OF VEHICLE PARTS
 WITH ANCILLARY WORKSHOP FOR A PERIOD OF 3 YEARS
 LOTS 460 RP (PART) AND 461 RP (PART) IN D.D.103,
 KAM TIN ROAD, KAM TIN, YUEN LONG

規劃署
 PLANNING
 DEPARTMENT



參考編號
 REFERENCE No.
 AYL-KTS/821

圖 PLAN
 A-4

本圖於2019年5月24日擬備，所根據的資料為攝於2019年5月10日的實地照片
 PLAN PREPARED ON 24.5.2019
 BASED ON SITE PHOTOS
 TAKEN ON 10.5.2019