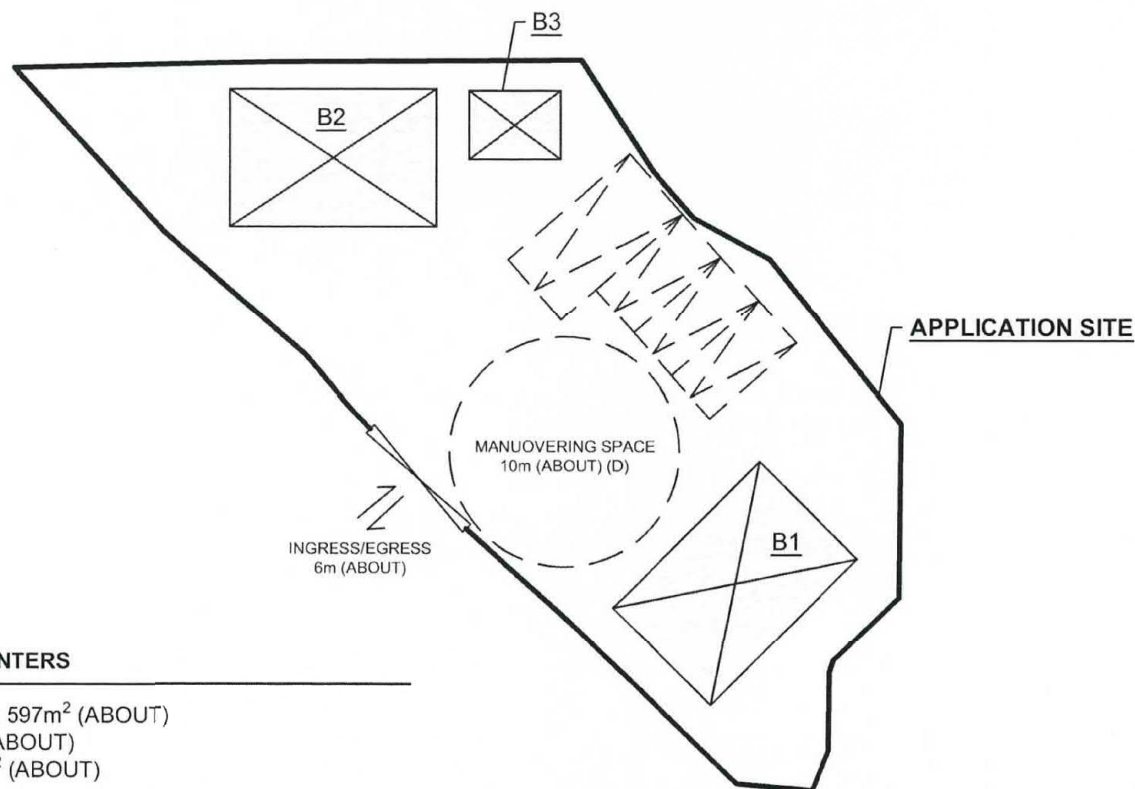
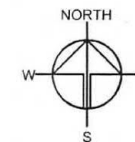


STRUCTURE	USE	COVERED AREA NON-DOM. GFA		BUILDING HEIGHT
B1	SHOP AND SERVICE (METALWARE)	54m ² (ABOUT)	108m ² (ABOUT)	7m (ABOUT) (2-STOREY)
B2	SHOP AND SERVICE (METALWARE)	54m ² (ABOUT)	108m ² (ABOUT)	7m (ABOUT) (2-STOREY)
B3	FS WATER TANK AND PUMP	12m ² (ABOUT)	12m ² (ABOUT)	3.5m (ABOUT) (1-STOREY)
TOTAL		120m ² (ABOUT)	228m ² (ABOUT)	



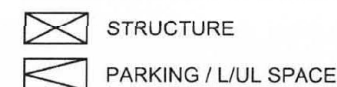
DEVELOPMENT PARAMENTERS

APPLICATION SITE AREA: 597m² (ABOUT)
COVERED AREA: 120m² (ABOUT)
UNCOVERED AREA: 477m² (ABOUT)

NO. OF PROPOSED STRUCTURE: 3
NON-DOMESTIC GFA: 228m² (ABOUT)
BUILDING HEIGHT: 3.5m - 7m (ABOUT)
NO. OF STOREY: 1 - 2

NO. OF PRIVATE CAR PARKING SPACE (2.5m X 5m): 3
NO. OF L/UL SPACE FOR LIGHT GOODS VEHICLE (3.5m X 7m): 1

LEGEND

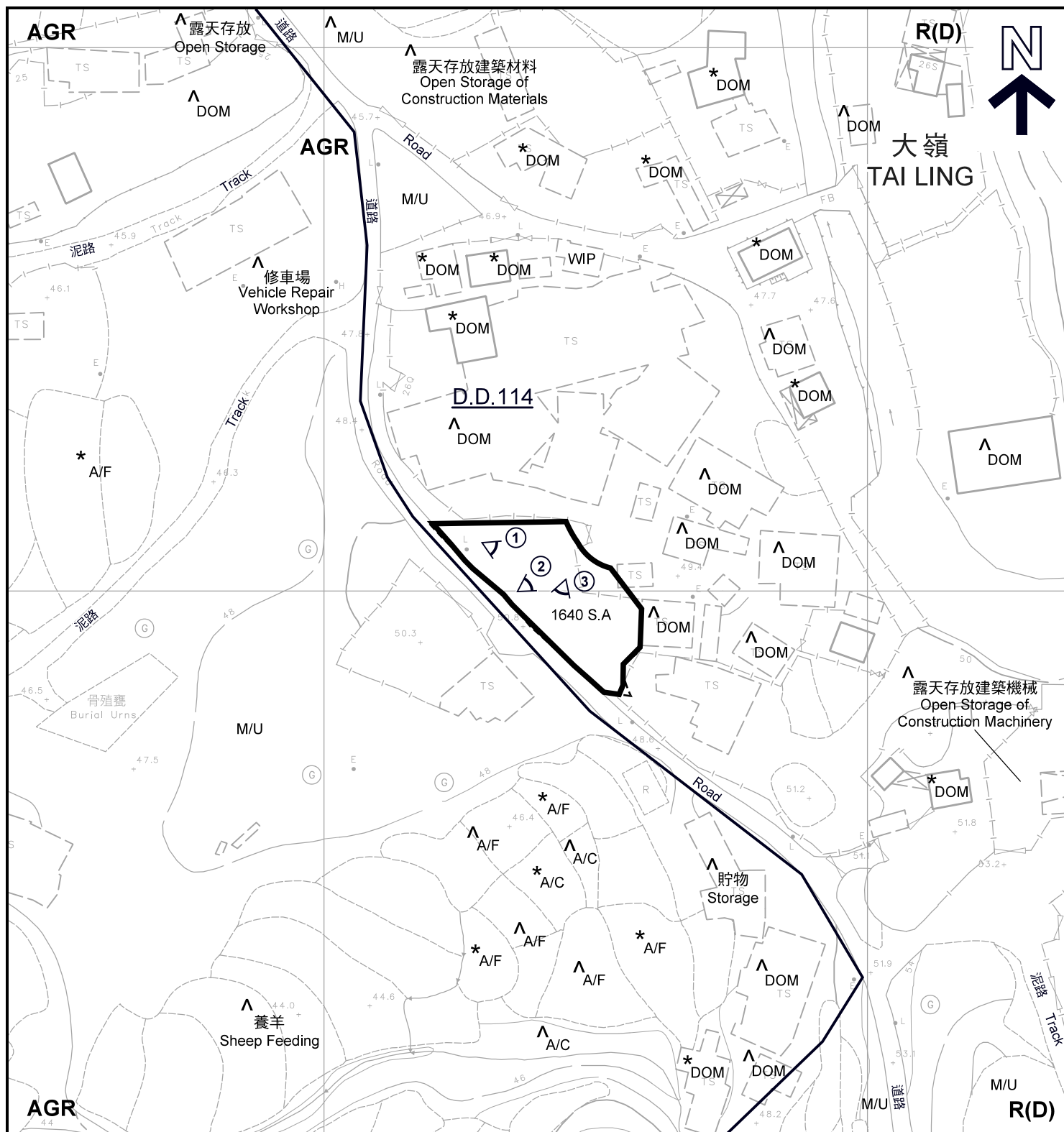


Drawing No.	Var.
P02	01
Project	
PROPOSED TEMPORARY SHOP AND SERVICES (METALWARE RETAIL SHOP) FOR A PERIOD OF 3 YEARS	
LOT 1640 S.A. IN D.D. 114, SHEK KONG, NEW TERRITORIES	
Drawing Title	
LAYOUT PLAN	
Scale of A4	
4:300	
Drawn	Date
	26.2.2019
Revised	Date

(資料來源:申請人於 28.2.2019 呈交的資料)
(Source : Applicant's Submission of 28.2.2019)

參考編號
REFERENCE No.
A/YL-SK/251

繪圖 DRAWING
A-1



圖例 LEGEND



申請地點 (界線只作識別用)
APPLICATION SITE
(BOUNDARY FOR IDENTIFICATION
PURPOSE ONLY)

R(D)

住宅(丁類)
RESIDENTIAL (GROUP D)

AGR

農業
AGRICULTURAL



實地照片的觀景點
VIEWING POINT OF SITE PHOTO

A/C

常耕農地
ACTIVE AGRICULTURAL LAND

A/F

休耕農地
FALLOW AGRICULTURAL LAND

DOM

住用構築物
DOMESTIC STRUCTURE

M/U

荒地
UNUSED LAND

WIP

工作進行中
WORK IN PROGRESS

註釋 Notes:

- (1) 2019年3月8日勘測的土地用途
Land uses shown on this plan are in accordance with the land use survey conducted by the Planning Department on 8.3.2019
- (2) * 土地用途跟1991年勘測的土地用途一致
Indicates that the use is the same as that revealed by the land use survey conducted by the Planning Department in 1991
- (3) ^ 土地用途跟1991年勘測的土地用途有別
Indicates that the use is different from that revealed by the land use survey conducted by the Planning Department in 1991

平面圖 SITE PLAN

擬議臨時商店及服務行業 (五金零售商店) (為期3年)
元朗石崗丈量約份第114約地段第1640號A分段 (部分)
PROPOSED TEMPORARY SHOP AND SERVICES
(METALWARE RETAIL SHOP) FOR A PERIOD OF 3 YEARS
LOT 1640 S.A (PART) IN D.D. 114, SHEK KONG, YUEN LONG

SCALE 1:1 000 比例尺
米 20 0 20 40 米
METRES

規劃署

PLANNING
DEPARTMENT



參考編號

REFERENCE No.

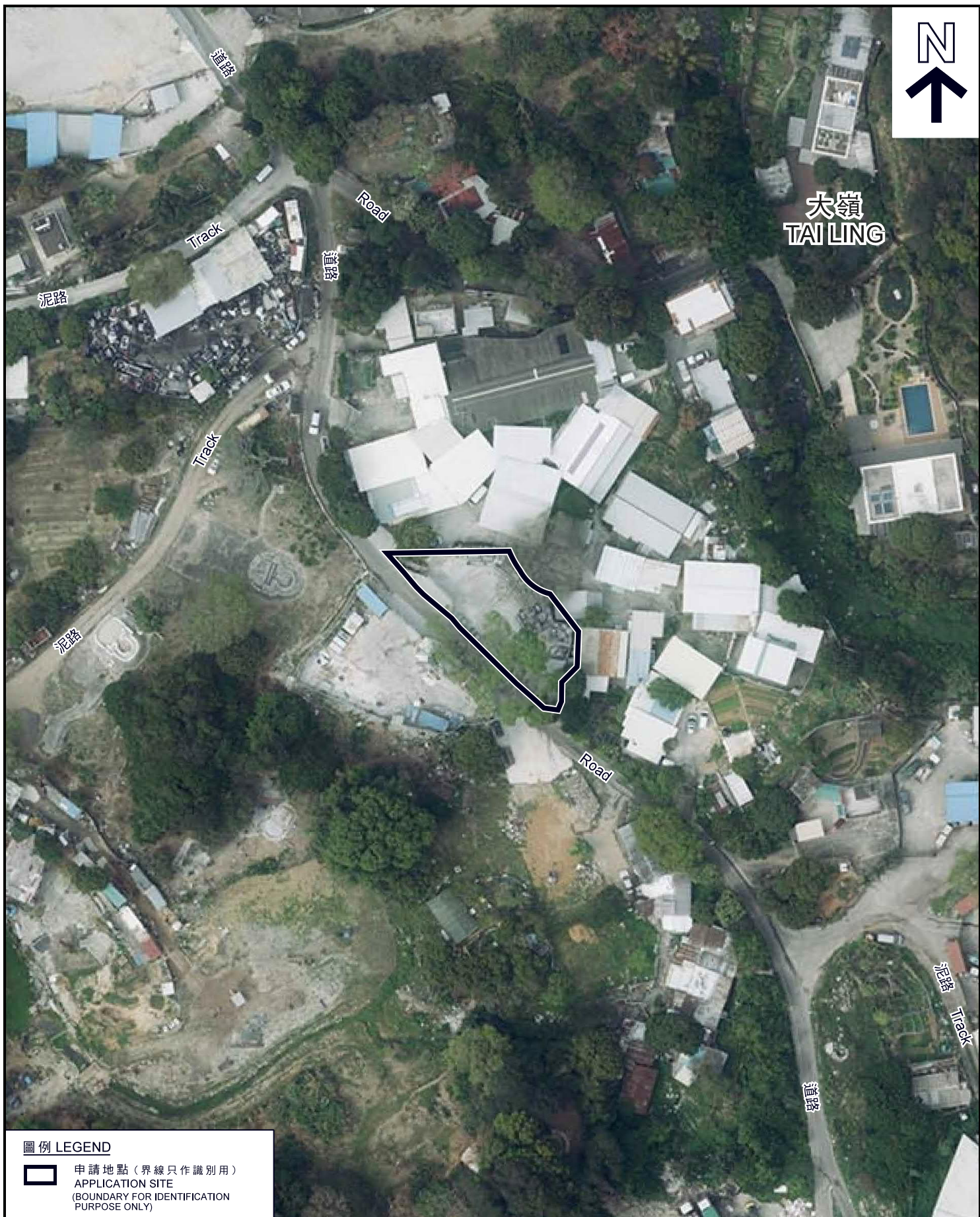
A/YL-SK/251

圖 PLAN

A-2

本摘要圖於2019年7月2日擬備，
所根據的資料為測量圖編號
6-NE-19B及20A

EXTRACT PLAN PREPARED ON 2.7.2019
BASED ON SURVEY SHEETS No.
6-NE-19B & 20A



圖例 LEGEND

-  申請地點（界線只作識別用）
APPLICATION SITE
(BOUNDARY FOR IDENTIFICATION
PURPOSE ONLY)

本摘要圖於2019年7月2日擬備，
所根據的資料為地政總署
於2018年3月13日拍得的航攝照片
編號E035410C

EXTRACT PLAN PREPARED ON 2.7.2019
BASED ON AERIAL PHOTO No.E035410C
TAKEN ON 13.3.2018 BY
LANDS DEPARTMENT

航攝照片 AERIAL PHOTO

擬議臨時商店及服務行業（五金零售商店）（為期3年）
元朗石崗丈量約份第114約地段第1640號A分段（部分）
PROPOSED TEMPORARY SHOP AND SERVICES
(METALWARE RETAIL SHOP) FOR A PERIOD OF 3 YEARS
LOT 1640 S.A (PART) IN D.D. 114, SHEK KONG, YUEN LONG

規劃署
PLANNING
DEPARTMENT



參考編號
REFERENCE No.
A/YL-SK/251

圖 PLAN
A-3



申請地點
APPLICATION SITE

1



申請地點
APPLICATION SITE

2



申請地點
APPLICATION SITE

3

實地照片 SITE PHOTO

擬議臨時商店及服務行業（五金零售商店）（為期3年）
元朗石崗丈量約份第114約地段第1640號A分段（部分）
PROPOSED TEMPORARY SHOP AND SERVICES
(METALWARE RETAIL SHOP) FOR A PERIOD OF 3 YEARS
LOT 1640 S.A (PART) IN D.D. 114, SHEK KONG, YUEN LONG

規劃署
PLANNING
DEPARTMENT



參考編號
REFERENCE No.
A/YL-SK/251

圖 PLAN
A-4

本摘要圖於2019年7月2日擬備，
所根據的資料為攝於
2019年3月8日的實地照片
PLAN PREPARED ON 2.7.2019
BASED ON SITE PHOTOS
TAKEN ON 8.3.2019