

(摘錄自申請人於 11. 6. 2020 呈交的申請書)
 (Extract from Applicant's
 Submission of 11.6.2020)

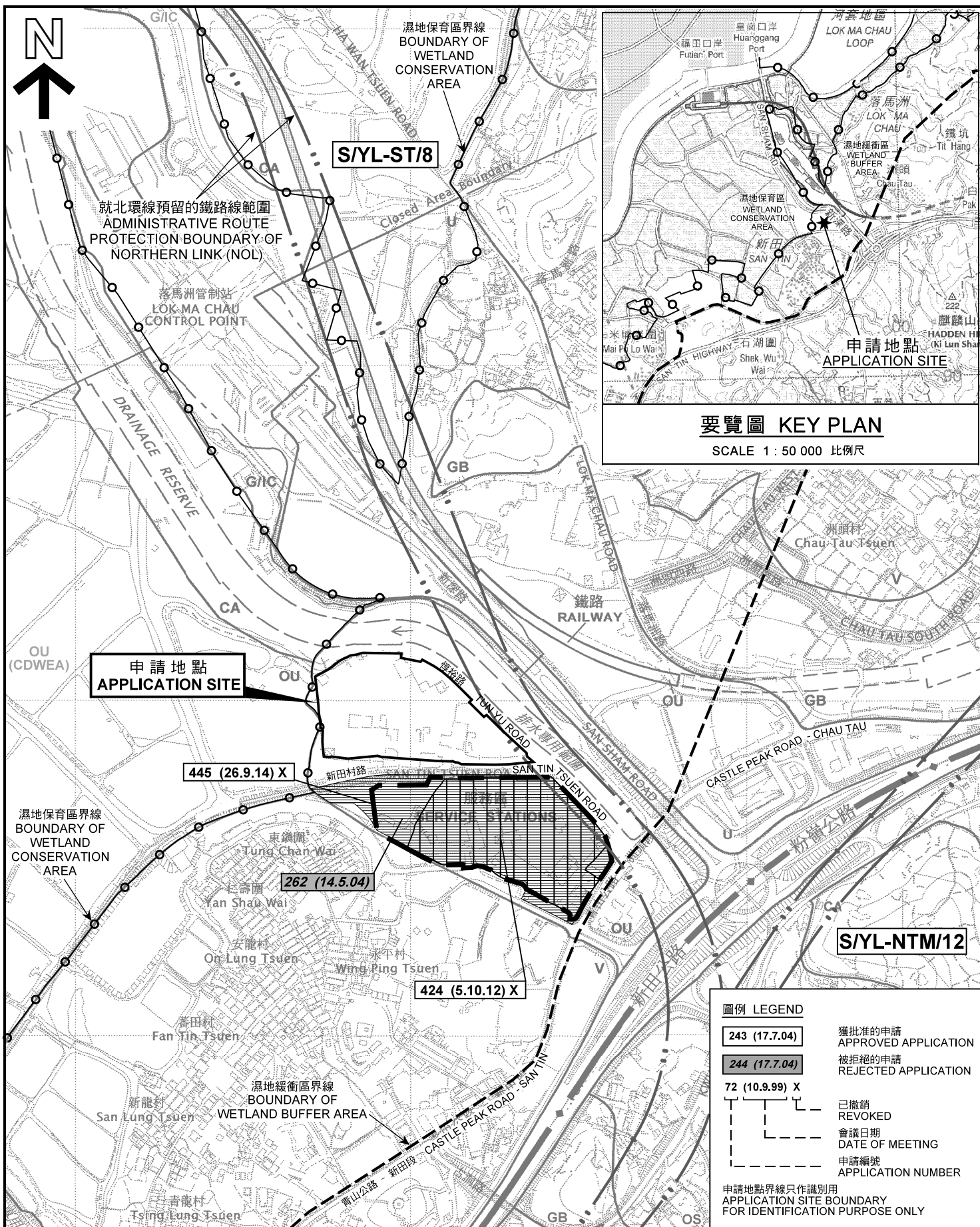
參考編號 REFERENCE No. A/YL-ST/575	繪圖 DRAWING A-1
---	--------------------------

Information of On-site Structures

No.	Use	No. of Storey	Dimension	Covered Area (m ²)	GFA (m ²)
1	CLP Transformer Room	1	10m(W) x 10m(L) x 5m(H)	100	100
2	Vehicle Repairing and Servicing Area (Open-sided)	1	14m(W) x 23m(L) x 6m(H)	322	322
3	Vehicle Repairing and Servicing Area (Open-sided)	1	15m(W) x 30m(L) x 6m(H)	450	450
4	Vehicle Repairing and Servicing Area (Open-sided)	1	15m(W) x 17m(L) x 6m(H)	255	255
5	Shop, Office and Storeroom	2	28m(W) x 45m(L) x 7m(H)	1,260	2,520
6	Vehicle Repairing and Servicing Area (Open-sided)	1	32m(W) x 64m(L) x 6m(H)	2,048	2,048
7	Shop and Office	1	28m(W) x 33m(L) x 7.5m(H)	924	924
8	Vehicle Repairing and Servicing Area (Open-sided)	1	14m(W) x 25m(L) x 6m(H)	350	350
9	Shop, Office and Storeroom	2	27m(W) x 43m(L) x 8m(H)	1,161	2,322
10	Type Repairing Area	1	14m(W) x 18m(L) x 6m(H)	252	252
11	Type Repairing Area	1	4m(W) x 14m(L) x 6m(H)	56	56
12	Vehicle Repairing and Servicing Area (Open-sided)	1	15m(W) x 55m(L) x 6m(H)	825	825
13	Vehicle Repairing and Servicing Area (Open-sided)	1	15m(W) x 55m(L) x 6m(H)	825	825
14	Type Repairing Area (Open-sided)	1	9.1m(W) x 24.4m(L) x 7m(H)	222.0	222.0
15	Security Office	1	2.7m(W) x 6.1m(L) x 2.6m(H)	16.5	16.5
16	Container Storage Area (Open-sided)	1	9.1m(W) x 13.7m(L) x 5.2m(H)	124.7	124.7
17	Office	2	12.2m(W) x 12.2m(L) x 5.2m(H) 6.1m(W) x 6.1m(L) x 5.2m(H)	186.1	372.1
18	Container Storage Area (Open-sided)	1	4.3m(W) x 10.7m(L) x 7m(H)	46.0	46.0
19	Storage of Construction Materials	1 (Height = 8m)	(67m(L) + 88.99 m(L)) x 27m(W) / 2	2,105.9	2,105.9
Total Area (m²)				11,529.2	14,136.2

(摘錄自申請人於 11.6.2020 呈交的申請書)
(Extract from Applicant's
Submission of 11.6.2020)

參考編號 REFERENCE No. A/YL-ST/575	繪圖 DRAWING A-2
--------------------------------------	-------------------



要覽圖 KEY PLAN

SCALE 1 : 50 000 比例尺

申請地點 APPLICATION SITE

S/YL-NTM/12

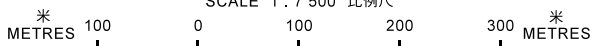
圖例 LEGEND

- 243 (17.7.04) 獲批准的申請 APPROVED APPLICATION
- 244 (17.7.04) 被拒絕的申請 REJECTED APPLICATION
- 72 (10.9.99) X 已撤銷 REVOKED
- 會議日期 DATE OF MEETING
- - - 申請編號 APPLICATION NUMBER

申請地點界線只作識別用
APPLICATION SITE BOUNDARY FOR IDENTIFICATION PURPOSE ONLY

位置圖及同類申請 LOCATION PLAN WITH SIMILAR APPLICATIONS

臨時汽車停車場(包括貨櫃車)、貨櫃貯存區、存放未領有牌照的新貨櫃車拖頭、存放建築材料、車胎修理、商店及服務行業(貨櫃車及其零件/配件銷售)、汽車修理及保養及附屬辦公室用途的規劃許可續期(為期3年)
元朗新田丈量約份第99約地段第372號D分段餘段(部分)、第743號餘段(部分)及第74號餘段(部分)和毗連政府土地
RENEWAL OF PLANNING APPROVAL FOR TEMPORARY VEHICLE PARK (INCLUDING CONTAINER VEHICLES), CONTAINER STORAGE AREA, STORAGE OF NEW UNLICENSED CONTAINER TRACTORS, STORAGE OF CONSTRUCTION MATERIALS, TYRE REPAIR, SHOP AND SERVICES (SALE OF CONTAINER VEHICLES AND THE RELATED PARTS/ACCESSORIES), VEHICLE REPAIR AND SERVICES, AND ANCILLARY OFFICES FOR A PERIOD OF 3 YEARS
LOTS 372 S,D RP (PART), 743 RP (PART) AND 744 RP (PART) IN D.D. 99 AND ADJOINING GOVERNMENT LAND, SAN TIN, YUEN LONG
SCALE 1 : 7 500 比例尺



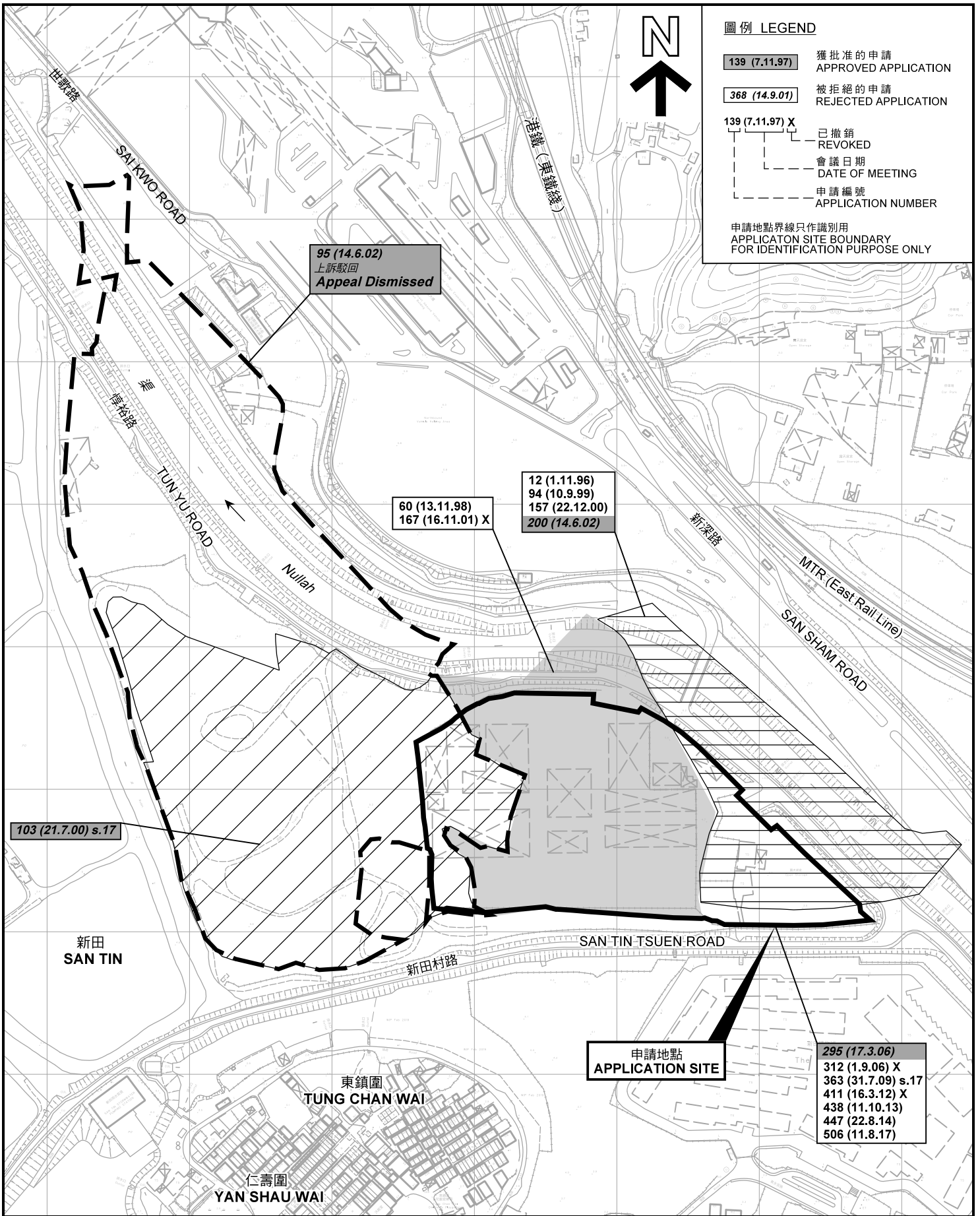
本摘要圖於2020年7月30日擬備，所根據的資料為於2006年12月5日核准的分區計劃大綱圖編號S/YL-ST/8及S/YL-NTM/12 EXTRACT PLAN PREPARED ON 30.7.2020 BASED ON OUTLINE ZONING PLANS No. S/YL-ST/8 & S/YL-NTM/12 APPROVED ON 5.12.2006

規劃署 PLANNING DEPARTMENT



參考編號 REFERENCE No. A/YL-ST/575

圖 PLAN A-1a



先前申請圖 PREVIOUS APPLICATION PLAN

臨時汽車停車場(包括貨櫃車)、貨櫃貯存區、存放未領有牌照的新貨櫃車拖頭、存放建築材料、車胎修理、商店及服務行業(貨櫃車及其零件/配件銷售)、汽車修理及保養及附屬辦公室用途的規劃許可續期(為期3年)
元朗新田丈量約份第99約地段第372號D分段餘段(部分)、第743號餘段(部分)及第744號餘段(部分)和毗連政府土地
RENEWAL OF PLANNING APPROVAL FOR TEMPORARY VEHICLE PARK (INCLUDING CONTAINER VEHICLES), CONTAINER STORAGE AREA, STORAGE OF NEW UNLICENSED CONTAINER TRACTORS, STORAGE OF CONSTRUCTION MATERIALS, TYRE REPAIR, SHOP AND SERVICES (SALE OF CONTAINER VEHICLES AND THE RELATED PARTS/ACCESSORIES), VEHICLE REPAIR AND SERVICES, AND ANCILLARY OFFICES FOR A PERIOD OF 3 YEARS
LOTS 372 S.D RP (PART), 743 RP (PART) AND 744 RP (PART) IN D.D. 99 AND ADJOINING GOVERNMENT LAND, SAN TIN, YUEN LONG

SCALE 1 : 3 500 比例尺
METRES 70 0 70 140 METRES

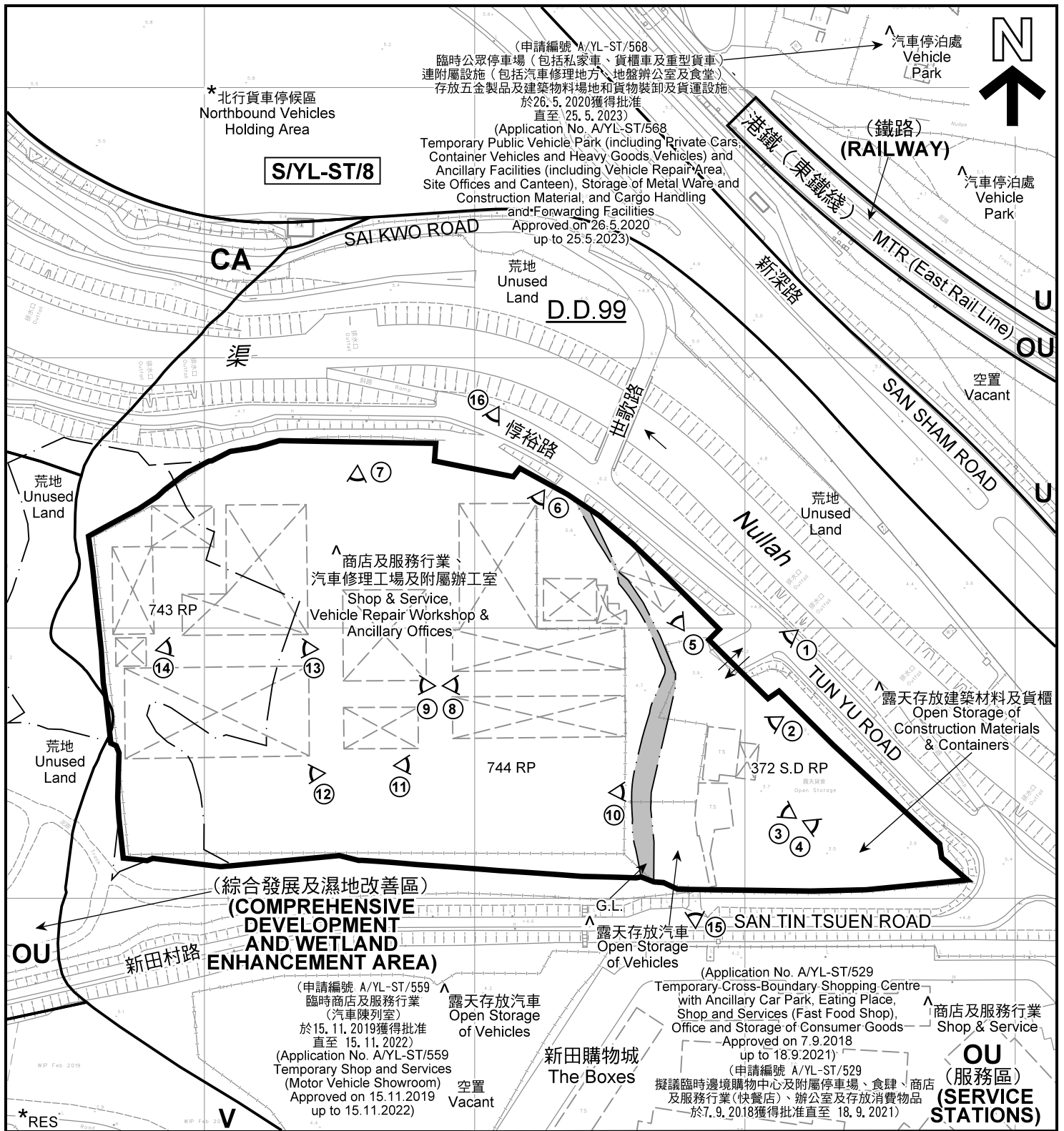
本摘要圖於2020年7月8日擬備，
所根據的資料為測量圖編號
2-SE-3C及8A
EXTRACT PLAN PREPARED ON 8.7.2020
BASED ON SURVEY SHEETS No.
2-SE-3C & 8A

規 劃 署
PLANNING
DEPARTMENT



參考編號
REFERENCE No.
AYL-ST/575

圖 PLAN
A-1b



註釋 Notes:

- (1) 2020年6月19日勘測的土地用途
Land uses shown on this plan are in accordance with the land use survey conducted by the Planning Department on 19.6.2020
- (2) * 土地用途跟1992年3月勘測的土地用途一致
Indicates that the use is the same as that revealed by the land use survey conducted by the Planning Department in Mar 1992
- (3) ^ 土地用途跟1992年3月勘測的土地用途有別
Indicates that the use is different from that revealed by the land use survey conducted by the Planning Department in Mar 1992

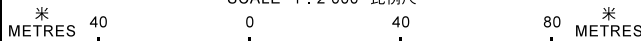
圖例 LEGEND

- 申請地點(界線只作識別用)
APPLICATION SITE
(BOUNDARY FOR IDENTIFICATION PURPOSE ONLY)
- 鄉村式發展
VILLAGE TYPE DEVELOPMENT
- 其他指定用途
OTHER SPECIFIED USES
- 未決定用途
UNDETERMINED
- 自然保育區
CONSERVATION AREA
- 政府土地
GOVERNMENT LAND
- 住用構築物
RESIDENTIAL STRUCTURES
- 實地照片的觀景點
VIEWING POINT OF SITE PHOTO
- 入口/出口
INGRESS / EGRESS

平面圖 SITE PLAN

臨時汽車停車場(包括貨櫃車、貨櫃貯存區、存放未領有牌照的新貨櫃車拖頭、存放建築材料、車胎修理、商店及服務行業(貨櫃車及其零件/配件銷售)、汽車修理及保養及附屬辦公室用途的規劃許可續期(為期3年)
元朗新田丈量約份第99約地段第372號D分段餘段(部分)、第743號餘段(部分)及第744號餘段(部分)和毗連政府土地
RENEWAL OF PLANNING APPROVAL FOR TEMPORARY VEHICLE PARK (INCLUDING CONTAINER VEHICLES), CONTAINER STORAGE AREA, STORAGE OF NEW UNLICENSED CONTAINER TRACTORS, STORAGE OF CONSTRUCTION MATERIALS, TYRE REPAIR, SHOP AND SERVICES (SALE OF CONTAINER VEHICLES AND THE RELATED PARTS/ACCESSORIES), VEHICLE REPAIR AND SERVICES, AND ANCILLARY OFFICES FOR A PERIOD OF 3 YEARS
LOTS 372 S.D RP (PART), 743 RP (PART) AND 744 RP (PART) IN D.D. 99 AND ADJOINING GOVERNMENT LAND, SAN TIN, YUEN LONG

SCALE 1 : 2 000 比例尺



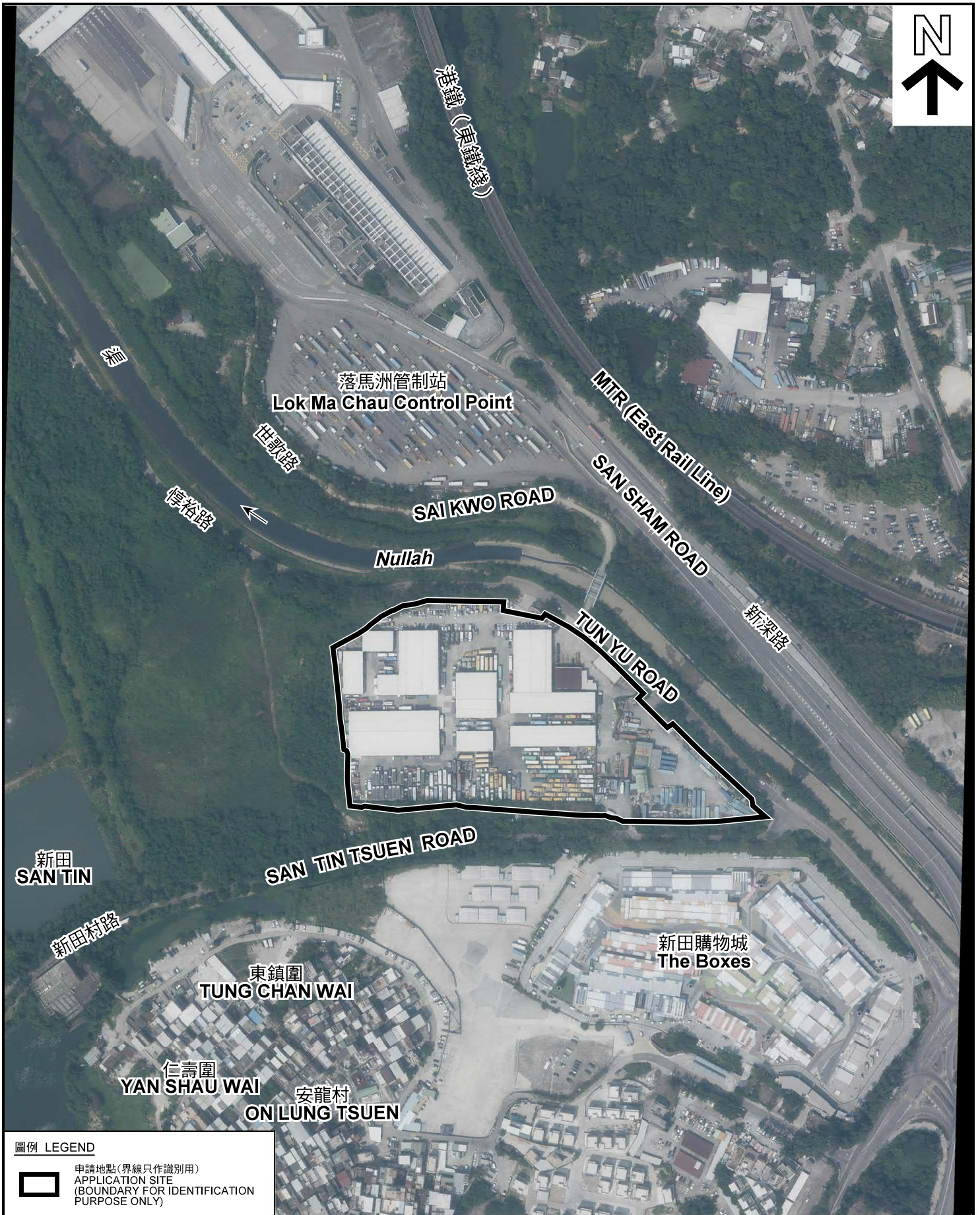
本摘要圖於2020年7月10日擬備, 所根據的資料為測量圖編號 2-SE-8A
EXTRACT PLAN PREPARED ON 10.7.2020
BASED ON SURVEY SHEET No. 2-SE-8A

規劃署
PLANNING
DEPARTMENT



參考編號
REFERENCE No.
A/YL-ST/575

圖 PLAN
A-2



圖例 LEGEND



申請地點(界線只作識別用)
APPLICATION SITE
(BOUNDARY FOR IDENTIFICATION
PURPOSE ONLY)

本摘要圖於2020年7月9日擬備，所根據的資料為地政總署於2019年10月2日拍得的航攝照片編號 E070434C
EXTRACT PLAN PREPARED ON 9.7.2020
BASED ON AERIAL PHOTO No.
E070434C TAKEN ON 2.10.2019
BY LANDS DEPARTMENT

航攝照片 AERIAL PHOTO

臨時汽車停車場(包括貨櫃車)、貨櫃貯存區、存放未領有牌照的新貨櫃車拖頭、存放建築材料、車胎修理、商店及服務行業(貨櫃車及其零件/配件銷售)、汽車修理及保養及附屬辦公室用途的規劃許可續期(為期3年)
元朗新田丈量約份第99約地段第372號D分段餘段(部分)、第743號餘段(部分)及第744號餘段(部分)和毗連政府土地
RENEWAL OF PLANNING APPROVAL FOR TEMPORARY VEHICLE PARK (INCLUDING CONTAINER VEHICLES), CONTAINER STORAGE AREA, STORAGE OF NEW UNLICENSED CONTAINER TRACTORS, STORAGE OF CONSTRUCTION MATERIALS, TYRE REPAIR, SHOP AND SERVICES (SALE OF CONTAINER VEHICLES AND THE RELATED PARTS/ACCESSORIES), VEHICLE REPAIR AND SERVICES, AND ANCILLARY OFFICES FOR A PERIOD OF 3 YEARS
LOTS 372 S.D RP (PART), 743 RP (PART) AND 744 RP (PART) IN D.D. 99 AND ADJOINING GOVERNMENT LAND, SAN TIN, YUEN LONG

規劃署
PLANNING
DEPARTMENT



參考編號
REFERENCE No.
A/YL-ST/575

圖 PLAN
A-3



申請地點界線只作識別用 APPLICATION SITE BOUNDARY FOR IDENTIFICATION PURPOSE ONLY

實地照片 SITE PHOTOS

本圖於2020年7月13日擬備，所根據的資料為攝於2020年6月19日的實地照片
 PLAN PREPARED ON 13.7.2020
 BASED ON SITE PHOTOS
 TAKEN ON 19.6.2020

臨時汽車停車場(包括貨櫃車)、貨櫃貯存區、存放未領有牌照的新貨櫃車拖頭、存放建築材料、車胎修理、商店及服務行業(貨櫃車及其零件/配件銷售)、汽車修理及保養及附屬辦公室用途的規劃許可續期(為期3年)
 元朗新田文景邨約份第99地段第372號D分段餘段(部分)、第743號餘段(部分)及第744號餘段(部分)和毗連政府土地
 RENEWAL OF PLANNING APPROVAL FOR TEMPORARY VEHICLE PARK (INCLUDING CONTAINER VEHICLES), CONTAINER STORAGE AREA, STORAGE OF NEW UNLICENSED CONTAINER TRACTORS, STORAGE OF CONSTRUCTION MATERIALS, TYRE REPAIR, SHOP AND SERVICES (SALE OF CONTAINER VEHICLES AND THE RELATED PARTS/ACCESSORIES), VEHICLE REPAIR AND SERVICES, AND ANCILLARY OFFICES FOR A PERIOD OF 3 YEARS
 LOTS 372 S.D RP (PART), 743 RP (PART) AND 744 RP (PART) IN D.D. 99 AND ADJOINING GOVERNMENT LAND, SAN TIN, YUEN LONG

規劃署
 PLANNING
 DEPARTMENT



參考編號
 REFERENCE No.
 A/YL-ST/575

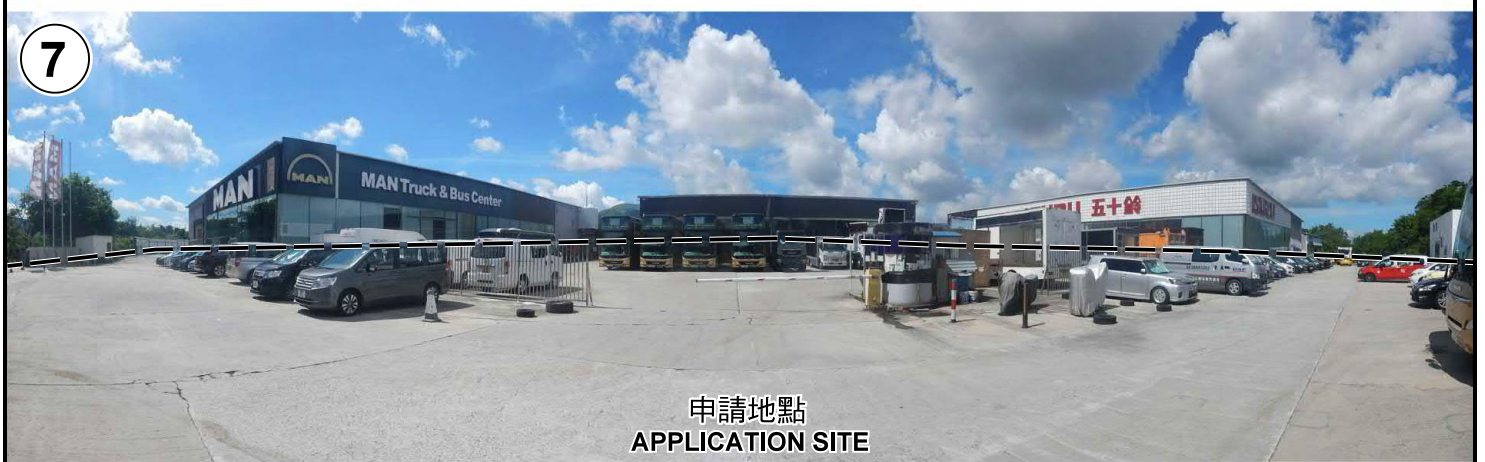
圖 PLAN
 A-4a



申請地點
APPLICATION SITE



申請地點
APPLICATION SITE



申請地點
APPLICATION SITE



申請地點
APPLICATION SITE

申請地點界線只作識別用 APPLICATION SITE BOUNDARY FOR IDENTIFICATION PURPOSE ONLY

實地照片 SITE PHOTOS

本圖於2020年7月13日擬備，所根據的資料為攝於2020年6月19日的實地照片
PLAN PREPARED ON 13.7.2020
BASED ON SITE PHOTOS
TAKEN ON 19.6.2020

臨時汽車停車場(包括貨櫃車)、貨櫃貯存區、存放未領有牌照的新貨櫃車拖頭、存放建築材料、車胎修理、商店及服務行業(貨櫃車及其零件/配件銷售)、汽車修理及保養及附屬辦公室用途的規劃許可續期(為期3年)
元朗新田文景邨約第39號地段第372號分地段(部分)、第743號餘段(部分)及第744號餘段(部分)和毗連政府土地
RENEWAL OF PLANNING APPROVAL FOR TEMPORARY VEHICLE PARK (INCLUDING CONTAINER VEHICLES), CONTAINER STORAGE AREA, STORAGE OF NEW UNLICENSED CONTAINER TRACTORS, STORAGE OF CONSTRUCTION MATERIALS, TYRE REPAIR, SHOP AND SERVICES (SALE OF CONTAINER VEHICLES AND THE RELATED PARTS/ACCESSORIES), VEHICLE REPAIR AND SERVICES, AND ANCILLARY OFFICES FOR A PERIOD OF 3 YEARS
LOTS 372 S/D RP (PART), 743 RP (PART) AND 744 RP (PART) IN D.D. 99 AND ADJOINING GOVERNMENT LAND, SAN TIN, YUEN LONG

規劃署
PLANNING
DEPARTMENT



參考編號
REFERENCE No.
A/YL-ST/575

圖 PLAN
A-4b

9



申請地點
APPLICATION SITE

10



申請地點
APPLICATION SITE

11



申請地點
APPLICATION SITE

12



申請地點
APPLICATION SITE

申請地點界線只作識別用 APPLICATION SITE BOUNDARY FOR IDENTIFICATION PURPOSE ONLY

實地照片 SITE PHOTOS

本圖於2020年7月13日擬備，所根據的資料為攝於2020年6月19日的實地照片
PLAN PREPARED ON 13.7.2020
BASED ON SITE PHOTOS
TAKEN ON 19.6.2020

臨時汽車停車場(包括貨櫃車)、貨櫃貯存區、存放未領有牌照的新貨櫃車拖頭、存放建築材料、車胎修理、商店及服務行業(貨櫃車及其零件/配件銷售)、汽車修理及保養及附屬辦公室用途的規劃許可續期(為期3年)
元朗新田文景邨第99的地段第372號D分段餘段(部分)、第743號餘段(部分)及第744號餘段(部分)和毗連政府土地
RENEWAL OF PLANNING APPROVAL FOR TEMPORARY VEHICLE PARK (INCLUDING CONTAINER VEHICLES), CONTAINER STORAGE AREA, STORAGE OF NEW UNLICENSED CONTAINER TRACTORS, STORAGE OF CONSTRUCTION MATERIALS, TYRE REPAIR, SHOP AND SERVICES (SALE OF CONTAINER VEHICLES AND THE RELATED PARTS/ACCESSORIES), VEHICLE REPAIR AND SERVICES, AND ANCILLARY OFFICES FOR A PERIOD OF 3 YEARS
LOTS 372 S.D RP (PART), 743 RP (PART) AND 744 RP (PART) IN D.D. 99 AND ADJOINING GOVERNMENT LAND, SAN TIN, YUEN LONG

規劃署
PLANNING
DEPARTMENT



參考編號
REFERENCE No.
A/YL-ST/575

圖 PLAN
A-4c

13



申請地點
APPLICATION SITE

14



申請地點
APPLICATION SITE

15



申請地點
APPLICATION SITE

16



申請地點
APPLICATION SITE

申請地點界線只作識別用 APPLICATION SITE BOUNDARY FOR IDENTIFICATION PURPOSE ONLY

實地照片 SITE PHOTOS

本圖於2020年7月13日擬備，所根據的資料為攝於2020年6月19日的實地照片
PLAN PREPARED ON 13.7.2020
BASED ON SITE PHOTOS
TAKEN ON 19.6.2020

臨時汽車停車場(包括貨櫃車)、貨櫃貯存區、存放未領有牌照的新貨櫃車拖頭、存放建築材料、車胎修理、商店及服務行業(貨櫃車及其零件/配件銷售)、汽車修理及保養及附屬辦公室用途的規劃許可續期(為期3年)
元朗新田文豪約份第99地段第372號D分段餘段(部分)、第743號餘段(部分)及第744號餘段(部分)和毗連政府土地
RENEWAL OF PLANNING APPROVAL FOR TEMPORARY VEHICLE PARK (INCLUDING CONTAINER VEHICLES), CONTAINER STORAGE AREA, STORAGE OF NEW UNLICENSED CONTAINER TRACTORS, STORAGE OF CONSTRUCTION MATERIALS, TYRE REPAIR, SHOP AND SERVICES (SALE OF CONTAINER VEHICLES AND THE RELATED PARTS/ACCESSORIES), VEHICLE REPAIR AND SERVICES, AND ANCILLARY OFFICES FOR A PERIOD OF 3 YEARS
LOTS 372 S/D RP (PART), 743 RP (PART) AND 744 RP (PART) IN D.D. 99 AND ADJOINING GOVERNMENT LAND, SAN TIN, YUEN LONG

規劃署
PLANNING
DEPARTMENT



參考編號
REFERENCE No.
A/YL-ST/575

圖 PLAN
A-4d