

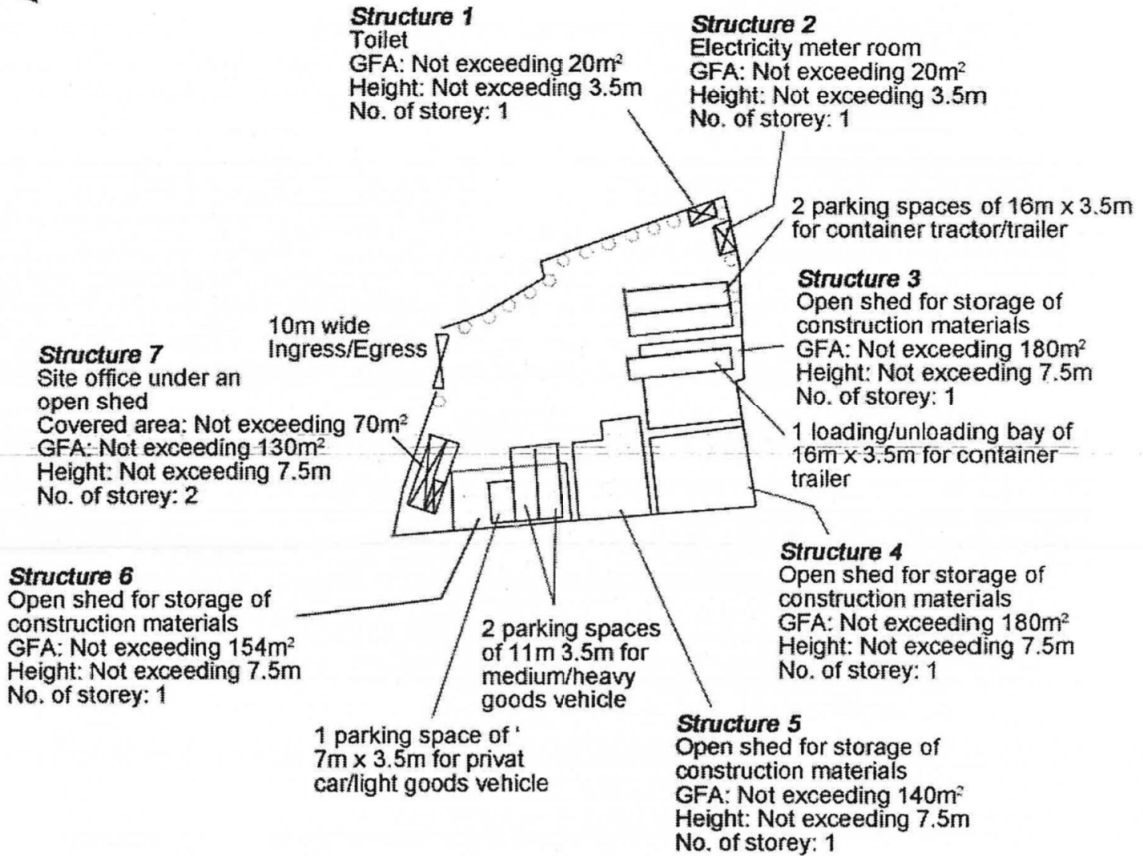
<p>Project 項目名稱: Proposed Temporary Open Storage of Construction Machinery, Construction Materials and Ancillary Parking of Medium/Heavy Goods Vehicle & Container Trailer/Tractor for a Period of 3 Years at Lots 431 (Part), 432 (Part), 433 S.B (Part) and 1739 RP (Part) in D.D. 107 and Adjoining Government Land, Fung Kat Heung, Yuen Long, N.T.</p>	<p>Drawing Title 圖目: Proposed Layout Plan</p> <p>Drawing No. 圖號: Figure 3</p>	<p>Remarks 備註:</p> <p>Scale 比例: 1:4000</p>
---	---	---

(摘錄自申請人於 11.9.2018 呈交的申請書)
(Extract from Applicant's Submission of 11.9.2018)

<p>參考編號 REFERENCE No. A/YL-KTN/632</p>	<p>繪圖 DRAWING A-1</p>
---	----------------------------------



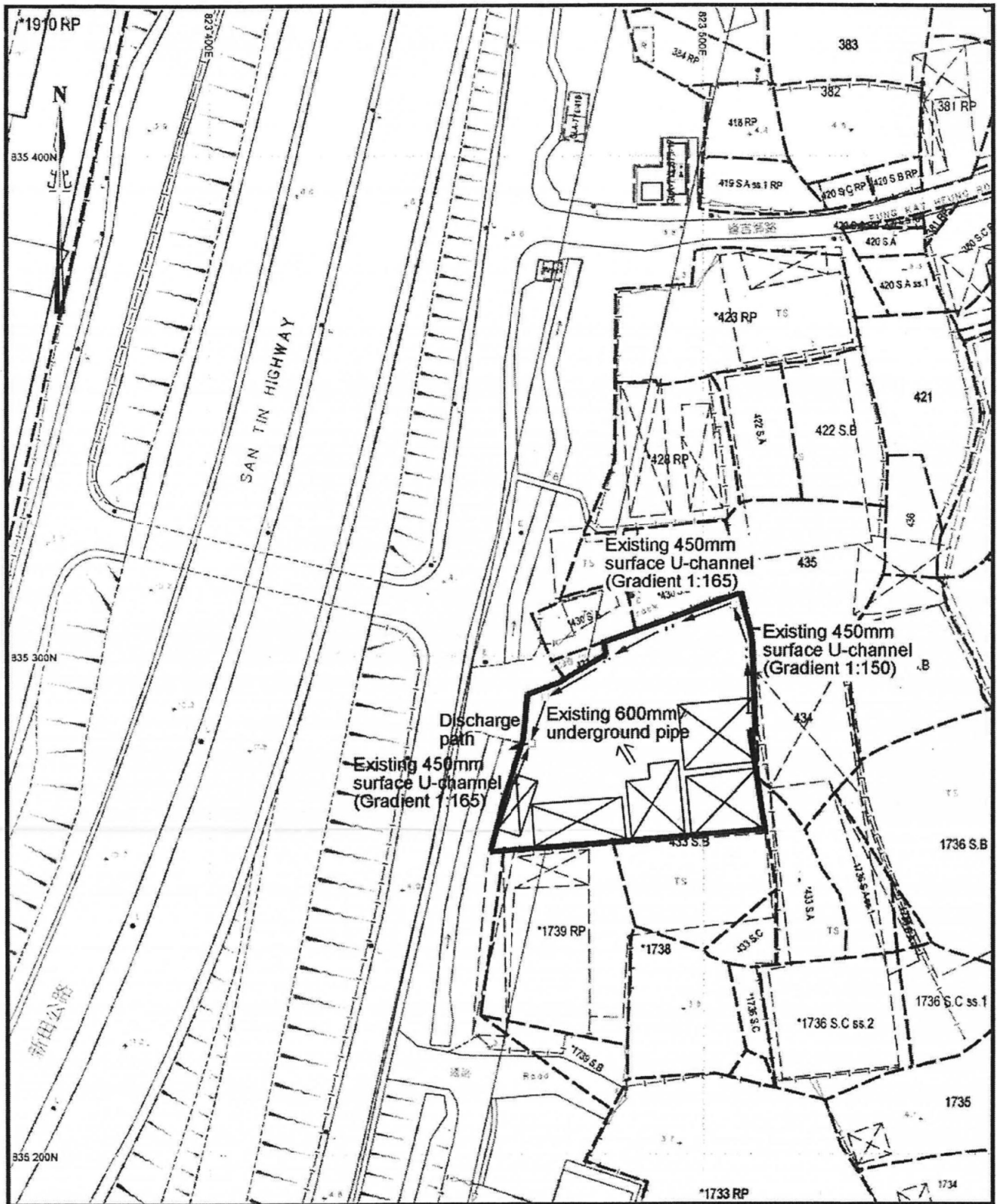
Tree	Approximate Height	Spacing
○ Existing trees	4.5m to 6m	4m



Project 項目名稱: Proposed Temporary Open Storage of Construction Machinery, Construction Materials and Ancillary Parking of Medium/Heavy Goods Vehicle & Container Trailer/Tractor for a Period of 3 Years at Lots 431 (Part), 432 (Part), 433 S.B (Part) and 1739 RP (Part) in D.D. 107 and Adjoining Government Land, Fung Kat Heung, Yuen Long, N.T.	Drawing Title 圖目: Proposed Landscape & Tree Preservation Plan	Remarks 備註:
	Drawing No. 圖號: Figure 4	Scale 比例: 1:4000

(摘錄自申請人於 11.9.2018 呈交的申請書)
(Extract from Applicant's Submission of 11.9.2018)

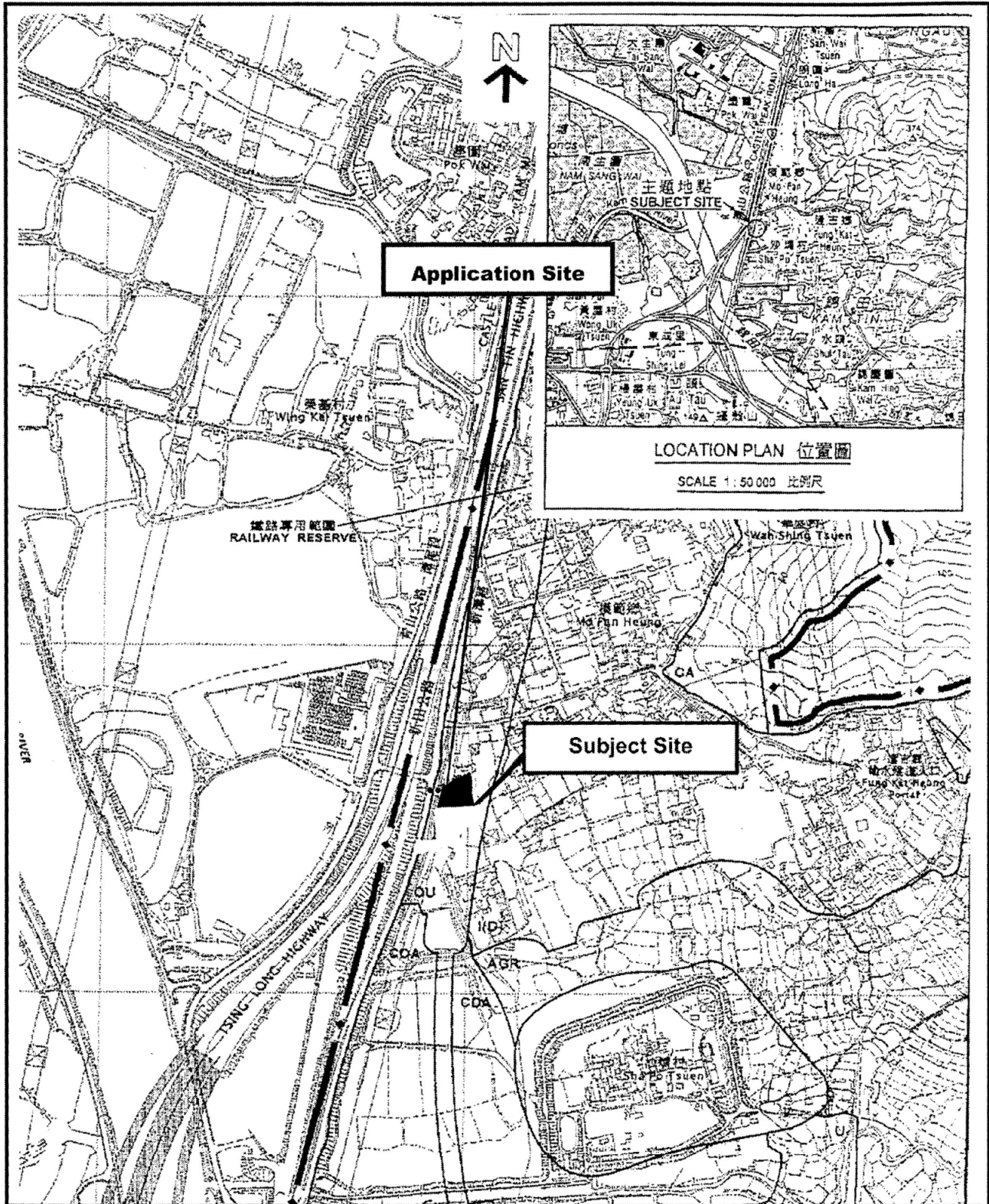
參考編號 REFERENCE No. A/YL-KTN/632	繪圖 DRAWING A-2
---------------------------------------	-------------------



<p>Project 項目名稱: Proposed Temporary Open Storage of Construction Machinery, Construction Materials and Ancillary Parking of Medium/Heavy Goods Vehicle & Container Trailer/Tractor for a Period of 3 Years at Lots 431 (Part), 432 (Part), 433 S.B (Part) and 1739 RP (Part) in D.D. 107 and Adjoining Government Land, Fung Kat Heung, Yuen Long, N.T.</p>	<p>Drawing Title 圖目: As-built Drainage Plan</p>	<p>Remarks 備註: <input type="checkbox"/> Existing catchpit Flow of surface runoff Existing structures</p>
	<p>Drawing No. 圖號: Figure 5</p>	<p>Scale 比例: 1:1000</p>

(摘錄自申請人於 11.9.2018 呈交的申請書)
(Extract from Applicant's Submission of 11.9.2018)

<p>參考編號 REFERENCE No. A/YL-KTN/632</p>	<p>繪圖 DRAWING A-3</p>
---	----------------------------------



<p>Project 項目名稱: Proposed Temporary Open Storage of Construction Machinery, Construction Materials and Ancillary Parking of Medium/Heavy Goods Vehicle & Container Trailer/Tractor for a Period of 3 Years at Lots 431 (Part), 432 (Part), 433 S.B (Part) and 1739 RP (Part) in D.D. 107 and Adjoining Government Land, Fung Kat Heung, Yuen Long, N.T.</p>	<p>Drawing Title 圖目: Extract from OZP No. S/YL-KTN/9</p>	<p>Remarks 備註: ● ● Vehicular access abutting San Tam Road</p>
	<p>Drawing No. 圖號: Figure 2</p>	<p>Scale 比例: 4:7500</p>

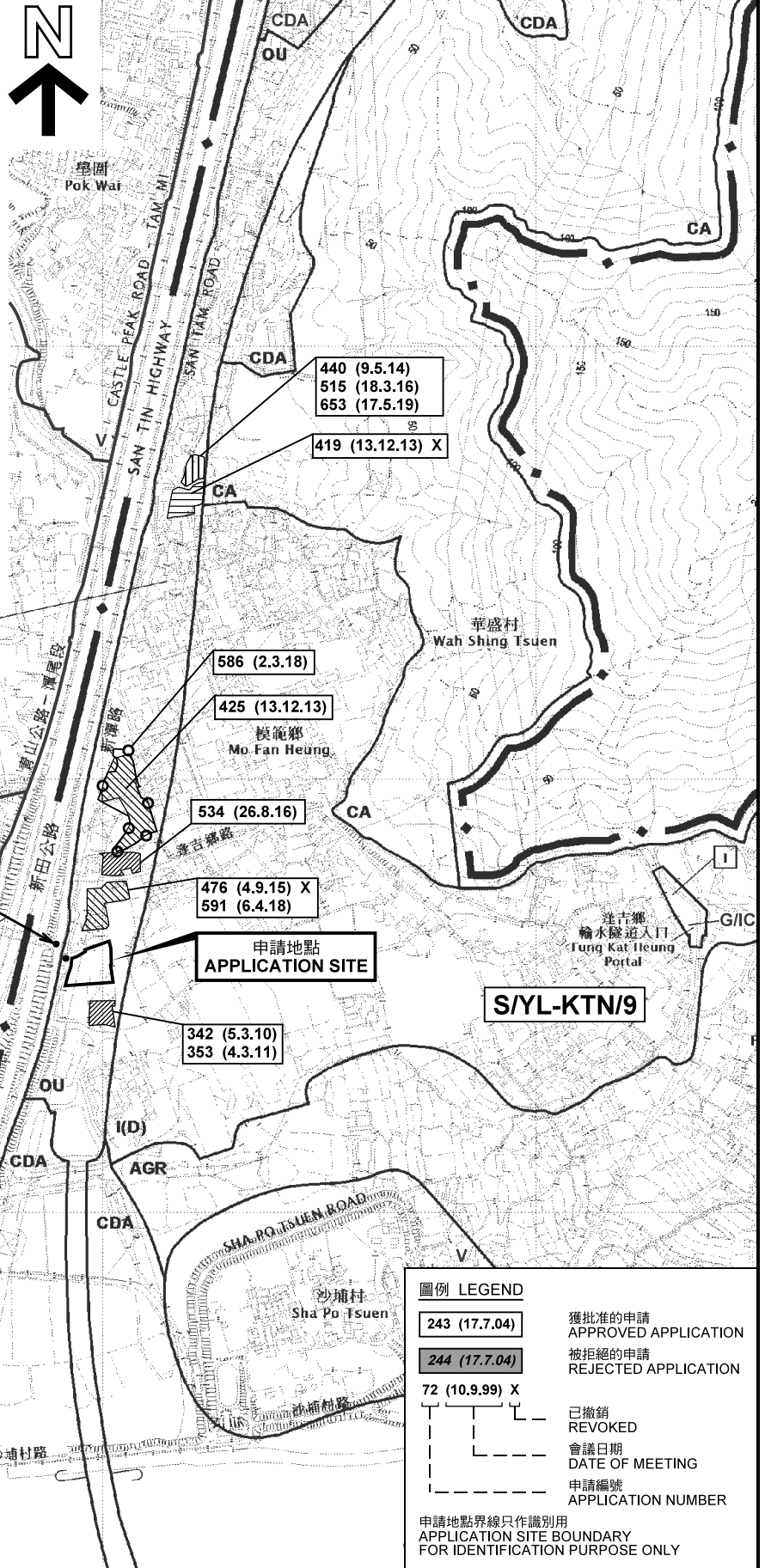
(摘錄自申請人於 11.9.2018 呈交的申請書)
(Extract from Applicant's Submission of 11.9.2018)

<p>參考編號 REFERENCE No. A/YL-KTN/632</p>	<p>繪圖 DRAWING A-4</p>
--	---------------------------



要覽圖 KEY PLAN

SCALE 1 : 50 000 比例尺



圖例 LEGEND

- 243 (17.7.04) 獲批准的申請 APPROVED APPLICATION
- 244 (17.7.04) 被拒絕的申請 REJECTED APPLICATION
- 72 (10.9.99) X 已撤銷 REVOKED
- - - 會議日期 DATE OF MEETING
- - - 申請編號 APPLICATION NUMBER

申請地點界線只作識別用
APPLICATION SITE BOUNDARY
FOR IDENTIFICATION PURPOSE ONLY


本摘要圖於2019年9月12日擬備，所根據的資料為於2014年12月2日核准的分區計劃大綱圖編號 S/YL-KTN/9 EXTRACT PLAN PREPARED ON 12.9.2019 BASED ON OUTLINE ZONING PLAN No. S/YL-KTN/9 APPROVED ON 2.12.2014

位置圖及同類申請 LOCATION PLAN WITH SIMILAR APPLICATIONS

臨時露天存放建築機械及建築材料和附屬中型/重型貨車及貨櫃車拖頭/拖架停放場 (為期3年)
元朗逢吉鄉丈量約份第107約地段第431(部分)、第432號(部分)、第433號B分段(部分)及第1739號餘段(部分)和毗連政府土地
TEMPORARY OPEN STORAGE OF CONSTRUCTION MACHINERY, CONSTRUCTION MATERIALS AND ANCILLARY PARKING OF MEDIUM/HEAVY GOODS VEHICLES AND CONTAINER TRAILERS/TRACTORS FOR A PERIOD OF 3 YEARS
LOTS 431 (PART), 432 (PART), 433 S.B (PART) AND 1739 RP (PART) IN D.D. 107 AND ADJOINING GOVERNMENT LAND, FUNG KAT HEUNG, YUEN LONG
SCALE 1 : 7 500 比例尺

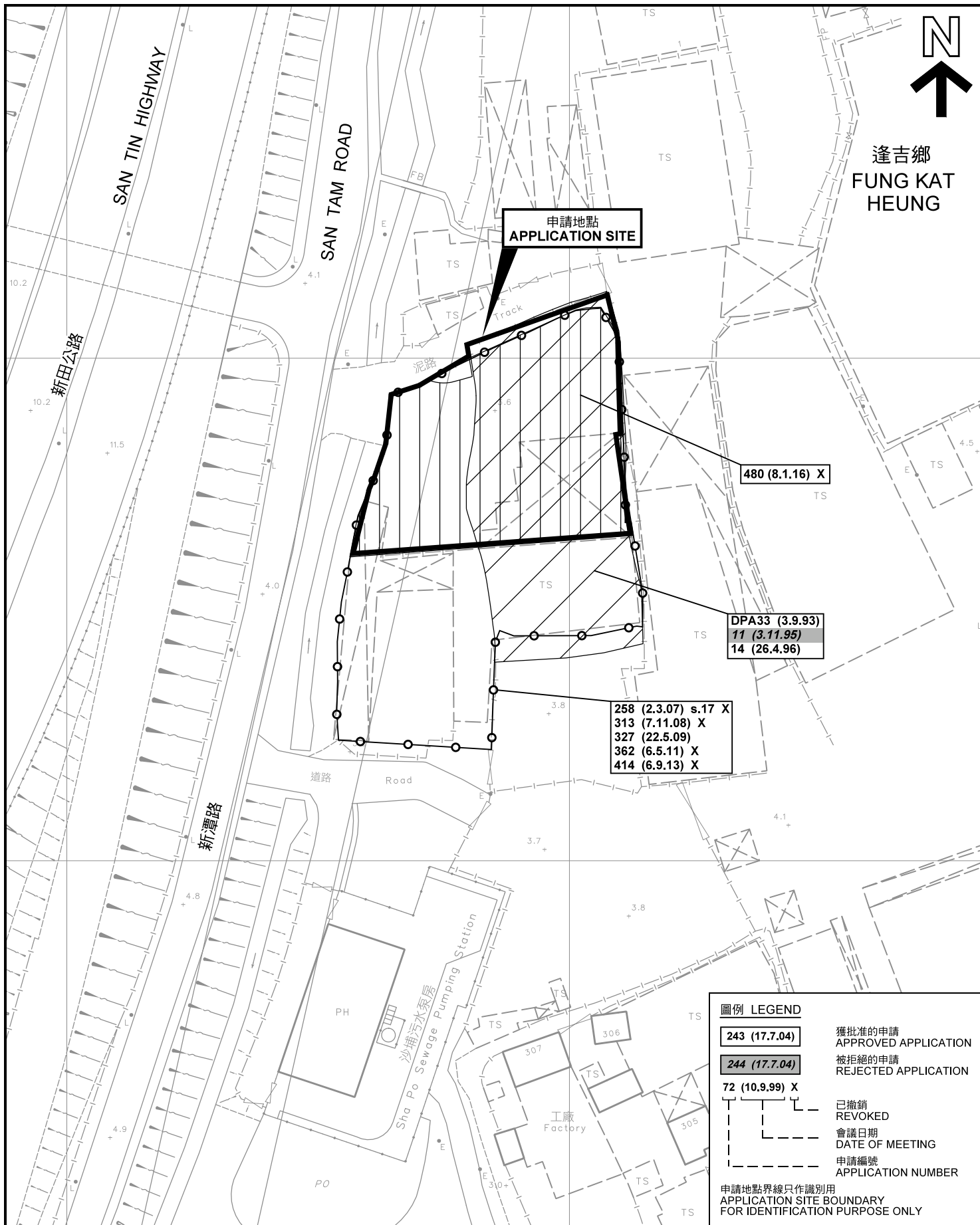
米 100 0 100 200 300 米
METRES

規劃署
PLANNING DEPARTMENT



參考編號
REFERENCE No.
A/YL-KTN/632

圖 PLAN
A-1a



先前申請圖 PREVIOUS APPLICATION PLAN

臨時露天存放建築機械及建築材料和附屬中型/重型貨車及貨櫃車拖頭/拖架停車場 (為期3年)

元朗逢吉鄉丈量約份第107約地段第431(部分)、第432號(部分)、第433號B分段(部分)及第1739號餘段(部分)和毗連政府土地
TEMPORARY OPEN STORAGE OF CONSTRUCTION MACHINERY, CONSTRUCTION MATERIALS AND ANCILLARY PARKING OF MEDIUM/HEAVY GOODS VEHICLES AND CONTAINER TRAILERS/TRACTORS FOR A PERIOD OF 3 YEARS

LOTS 431 (PART), 432 (PART), 433 S.B (PART) AND 1739 RP (PART) IN D.D. 107 AND ADJOINING GOVERNMENT LAND, FUNG KAT HEUNG, YUEN LONG
SCALE 1 : 1 000 比例尺

米 METRES 20 0 20 40 米 METRES

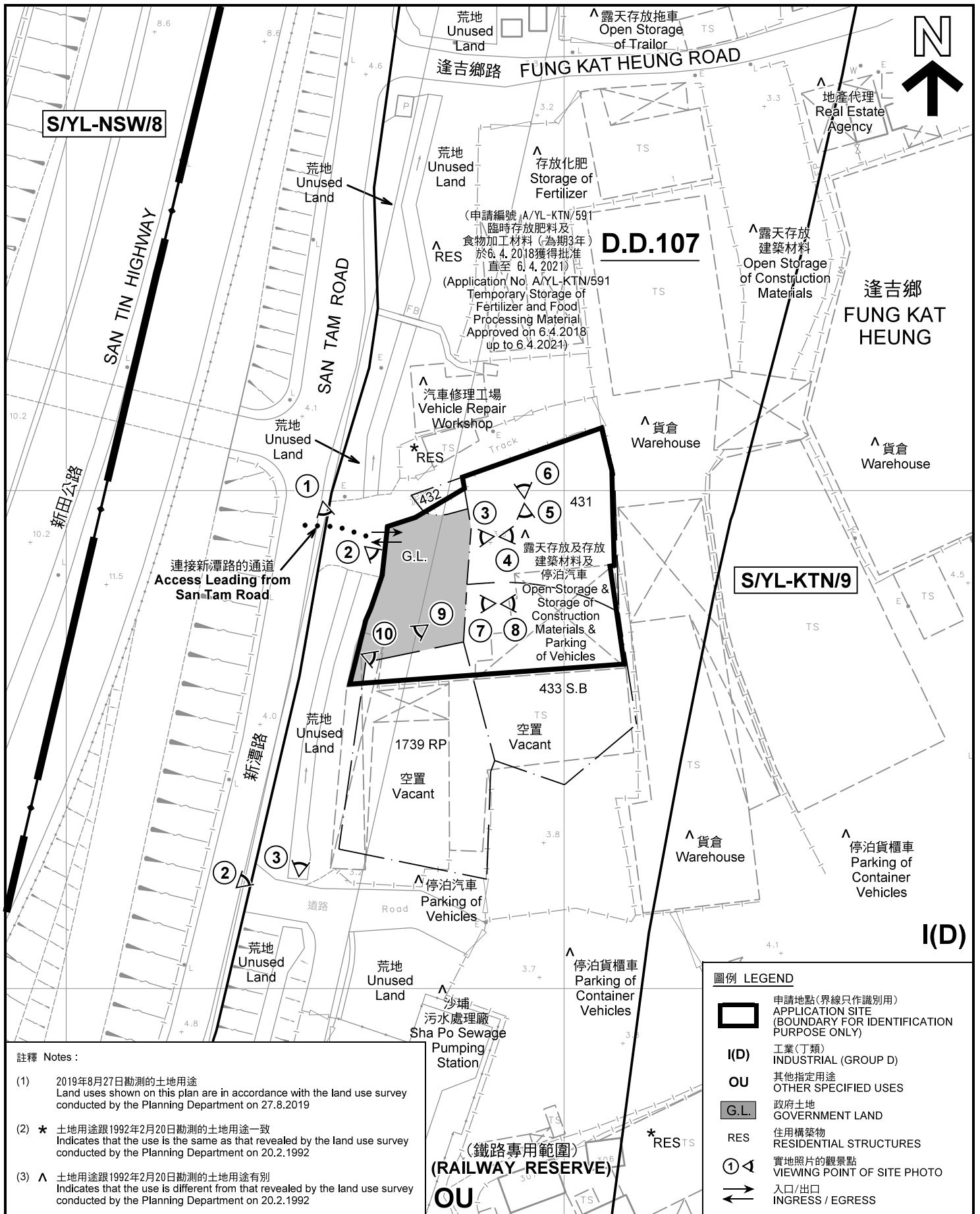
本摘要圖於2019年8月26日擬備，所根據的資料為測量圖編號 6-NE-1D
EXTRACT PLAN PREPARED ON 26.8.2019
BASED ON SURVEY SHEET No. 6-NE-1D

規劃署
PLANNING
DEPARTMENT



參考編號
REFERENCE No.
A/YL-KTN/632

圖 PLAN
A-1b



註釋 Notes :

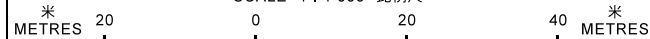
- (1) 2019年8月27日勘測的土地用途
Land uses shown on this plan are in accordance with the land use survey conducted by the Planning Department on 27.8.2019
- (2) * 土地用途跟1992年2月20日勘測的土地用途一致
Indicates that the use is the same as that revealed by the land use survey conducted by the Planning Department on 20.2.1992
- (3) ^ 土地用途跟1992年2月20日勘測的土地用途有別
Indicates that the use is different from that revealed by the land use survey conducted by the Planning Department on 20.2.1992

圖例 LEGEND

- 申請地點(界線只作識別用)
APPLICATION SITE (BOUNDARY FOR IDENTIFICATION PURPOSE ONLY)
- I(D)** 工業(丁類)
INDUSTRIAL (GROUP D)
- OU** 其他指定用途
OTHER SPECIFIED USES
- G.L.** 政府土地
GOVERNMENT LAND
- RES** 住用構築物
RESIDENTIAL STRUCTURES
- 實地照片的觀景點
VIEWING POINT OF SITE PHOTO
- 入口/出口
INGRESS / EGRESS

平面圖 SITE PLAN

臨時露天存放建築機械及建築材料和附屬中型/重型貨車及貨櫃車拖頭/拖架停放場(為期3年)
元朗逢吉鄉丈量約份第107約地段第431(部分)、第432號(部分)、第433號B分段(部分)及第1739號餘段(部分)和毗連政府土地
TEMPORARY OPEN STORAGE OF CONSTRUCTION MACHINERY, CONSTRUCTION MATERIALS AND ANCILLARY PARKING OF MEDIUM/HEAVY GOODS VEHICLES AND CONTAINER TRAILERS/TRACTORS FOR A PERIOD OF 3 YEARS
LOTS 431 (PART), 432 (PART), 433 S.B (PART) AND 1739 RP (PART) IN D.D. 107 AND ADJOINING GOVERNMENT LAND, FUNG KAT HEUNG, YUEN LONG
SCALE 1 : 1 000 比例尺



本摘要圖於2019年8月30日擬備, 所根據的資料為測量圖編號 6-NE-1D
EXTRACT PLAN PREPARED ON 30.8.2019
BASED ON SURVEY SHEET No. 6-NE-1D

規劃署
PLANNING
DEPARTMENT



參考編號
REFERENCE No.
A/YL-KTN/632

圖 PLAN
A-2



圖例 LEGEND



申請地點 (界線只作識別用)
APPLICATION SITE
(BOUNDARY FOR IDENTIFICATION
PURPOSE ONLY)

本摘要圖於2019年8月26日擬備，所根據的資料為地政總署於2018年1月3日拍得的航攝照片編號 E033695C

EXTRACT PLAN PREPARED ON 26.8.2019
BASED ON AERIAL PHOTO No.
E033695C TAKEN ON 3.1.2018
BY LANDS DEPARTMENT

航攝照片 AERIAL PHOTO

臨時露天存放建築機械及建築材料和附屬中型/重型貨車及貨櫃車拖頭/拖架停放場 (為期3年)
元朗逢吉鄉丈量約份第107約地段第431(部分)、第432號(部分)、第433號B分段(部分)及第1739號餘段(部分)和毗連政府土地
TEMPORARY OPEN STORAGE OF CONSTRUCTION MACHINERY, CONSTRUCTION MATERIALS AND ANCILLARY PARKING OF MEDIUM/HEAVY GOODS VEHICLES AND CONTAINER TRAILERS/TRACTORS FOR A PERIOD OF 3 YEARS
LOTS 431 (PART), 432 (PART), 433 S.B (PART) AND 1739 RP (PART) IN D.D. 107 AND ADJOINING GOVERNMENT LAND, FUNG KAT HEUNG, YUEN LONG

規劃署
PLANNING
DEPARTMENT



參考編號
REFERENCE No.
A/YL-KTN/632

圖 PLAN
A-3



申請地點界線只作識別用 APPLICATION SITE BOUNDARY FOR IDENTIFICATION PURPOSE ONLY

實地照片 SITE PHOTOS

臨時露天存放建築機械及建築材料和附屬中型/重型貨車及貨櫃車拖頭/拖架停放場（為期3年）
 元朗達吉鄉丈量約份第107約地段第431(部分)、第432號(部分)、第433號B分段(部分)及第1739號餘段(部分)和毗連政府土地
 TEMPORARY OPEN STORAGE OF CONSTRUCTION MACHINERY, CONSTRUCTION MATERIALS AND ANCILLARY PARKING OF MEDIUM/HEAVY GOODS VEHICLES AND CONTAINER TRAILERS/TRACTORS FOR A PERIOD OF 3 YEARS
 LOTS 431 (PART), 432 (PART), 433 S.B (PART) AND 1739 RP (PART) IN D.D. 107 AND ADJOINING GOVERNMENT LAND, FUNG KAT HEUNG, YUEN LONG

規劃署
**PLANNING
 DEPARTMENT**



參考編號
 REFERENCE No.
A/YL-KTN/632

圖 PLAN
A-4a

本圖於2019年8月30日擬備，所根據的資料為攝於2019年8月27日的實地照片
 PLAN PREPARED ON 30.8.2019
 BASED ON SITE PHOTOS
 TAKEN ON 27.8.2019



6

申請地點
APPLICATION SITE



7

申請地點
APPLICATION SITE



8

申請地點
APPLICATION SITE



9

申請地點
APPLICATION SITE



10

申請地點
APPLICATION SITE

申請地點界線只作識別用 APPLICATION SITE BOUNDARY FOR IDENTIFICATION PURPOSE ONLY

實地照片 SITE PHOTOS

臨時露天存放建築機械及建築材料和附屬中型/重型貨車及貨櫃車拖頭/拖架停車場（為期3年）
元朗達吉鄉丈量約份第107約地段第431(部分)、第432號(部分)、第433號B分段(部分)及第1739號餘段(部分)和毗連政府土地
TEMPORARY OPEN STORAGE OF CONSTRUCTION MACHINERY, CONSTRUCTION MATERIALS AND ANCILLARY PARKING OF MEDIUM/HEAVY GOODS VEHICLES AND CONTAINER TRAILERS/TRACTORS FOR A PERIOD OF 3 YEARS
LOTS 431 (PART), 432 (PART), 433 S.B (PART) AND 1739 RP (PART) IN D.D. 107 AND ADJOINING GOVERNMENT LAND, FUNG KAT HEUNG, YUEN LONG

規劃署
PLANNING
DEPARTMENT



參考編號
REFERENCE No.
A/YL-KTN/632

圖 PLAN
A-4b

本圖於2019年8月30日擬備，所根據的資料為攝於2019年8月27日的實地照片
PLAN PREPARED ON 30.8.2019
BASED ON SITE PHOTOS
TAKEN ON 27.8.2019