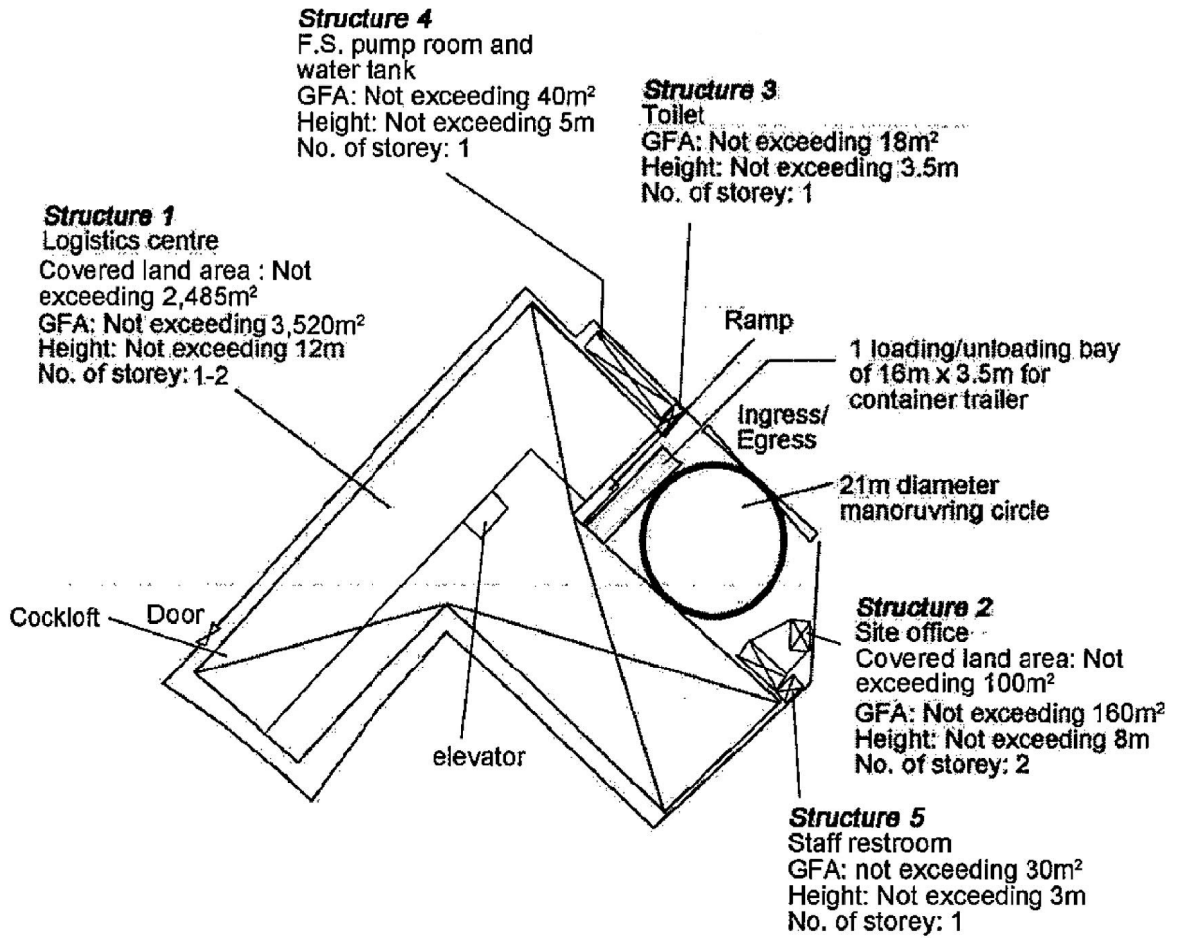


<p>Project 項目名稱: Proposed Temporary Logistics Centre for a Period of 3 Years at Lots 1968 (Part), 1970 (Part), 1971 RP (Part), 1973 (Part), 1975 RP (Part), 1978 (Part) & 1979 (Part) in D.D. 125 Ha Tsuen, Yuen Long, N.T.</p>	<p>Drawing Title 圖目: Location Plan</p> <p>Drawing No. 圖號: Figure 2</p>	<p>Remarks 備註: ●●● Vehicular access leading to Ping Ha Road</p> <p>Scale 比例: 1:7500</p>
---	--	---

(摘錄自申請人於 30.6.2020 呈交的申請書)
 (Extract from Applicant's Submission of 30.6.2020)

<p>參考編號 REFERENCE No. A/HSK/241</p>	<p>繪圖 DRAWING A-1</p>
--	--

N



Project 項目名稱: Proposed Temporary Logistics Centre for a Period of 3 Years at Lots 1968 (Part), 1970 (Part), 1971 RP (Part), 1973 (Part), 1975 RP (Part), 1978 (Part) & 1979 (Part) in D.D. 125 Ha Tsuen, Yuen Long, N.T.	Drawing Title 圖目: Proposed Layout Plan	Remarks 備註:
	Drawing No. 圖號: Figure 3	
	Scale 比例: 1:1000	

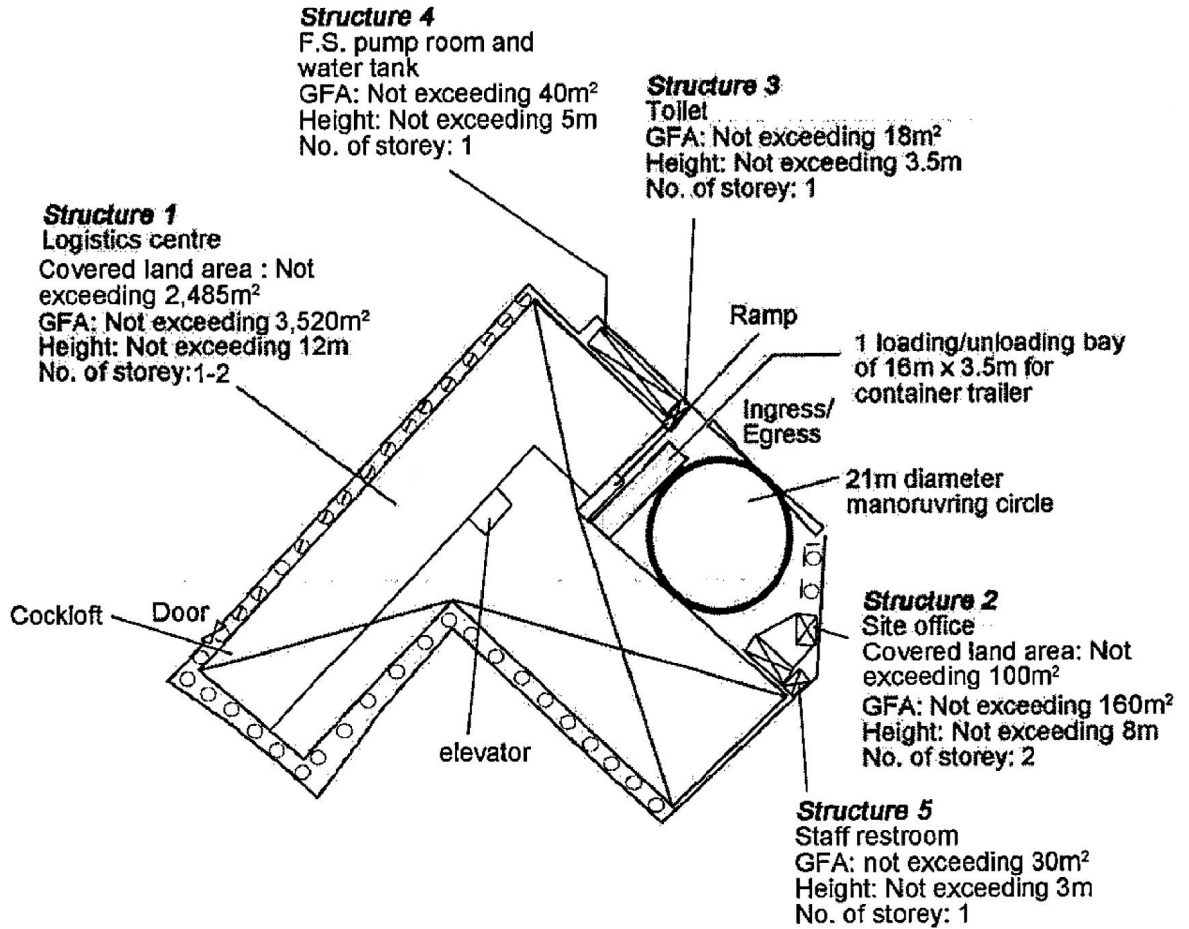
(摘錄自申請人於 30.6.2020 呈交的申請書)
(Extract from Applicant's Submission of 30.6.2020)

參考編號 REFERENCE No. A/HSK/241	繪圖 DRAWING A-2
---	--------------------------

N



Tree	Approximate Height	Spacing
⊙ Existing trees	About 4m to 6m	4m
○ Existing <i>Cassia surattensis</i>	About 2.75m	4m



Project 項目名稱:

Proposed Temporary Logistics Centre for a Period of 3 Years at Lots 1968 (Part), 1970 (Part), 1971 RP (Part), 1973 (Part), 1975 RP (Part), 1978 (Part) & 1979 (Part) in D.D. 125 Ha Tsuen, Yuen Long, N.T.

Drawing Title 圖目:

Proposed Landscape & Tree Preservation Plan

Drawing No. 圖號:

Figure 4

Remarks 備註:

-- Kerb at minimum 1m away from the existing tree

Scale 比例:

~~1:1000~~

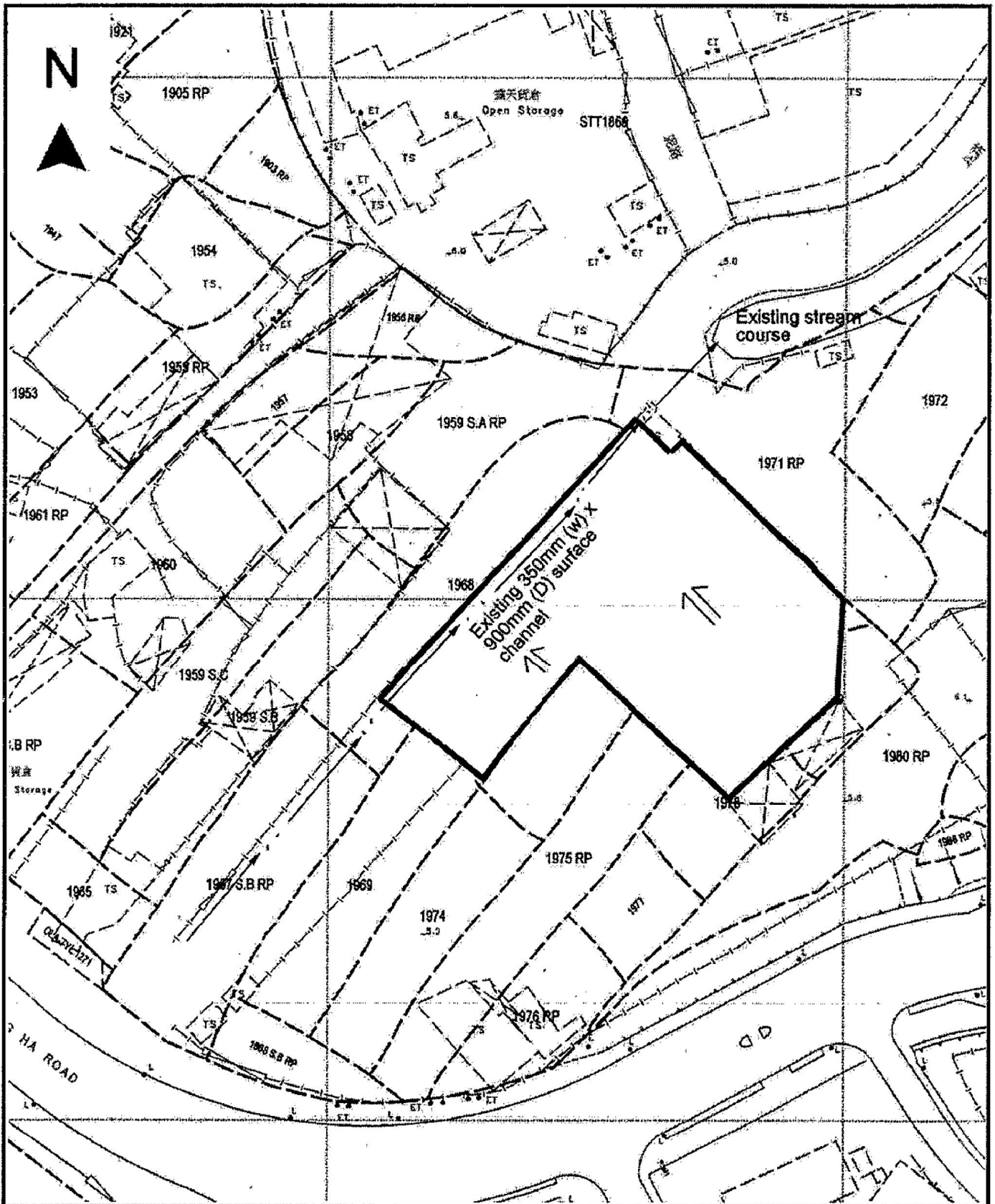
(摘錄自申請人於 30.6.2020 呈交的申請書)
(Extract from Applicant's Submission of 30.6.2020)

參考編號

REFERENCE No.
A/HSK/241

繪圖 DRAWING

A-3



<p>Project 項目名稱: Proposed Temporary Logistics Centre for a Period of 3 Years at Lots 1968 (Part), 1970 (Part), 1971 RP (Part), 1973 (Part), 1975 RP (Part), 1978 (Part) & 1979 (Part) in D.D. 125 Ha Tsuen, Yuen Long, N.T.</p>	<p>Drawing Title 圖名: As-built Drainage Plan</p>	<p>Remarks 備註: Flow of surface runoff</p>
	<p>Drawing No. 圖號: Figure 5</p>	<p>Scale 比例: 1:1000</p>

(摘錄自申請人於 30.6.2020 提交的申請書)
 (Extract from Applicant's Submission of 30.6.2020)

<p>參考編號 REFERENCE No. A/HSK/241</p>	<p>繪圖 DRAWING A-4</p>
--	-----------------------------------

APPENDIX I
Proposed Temporary Logistics Centre for a Period of 3 Years at Lots 196B (Part), 1970 (Part), 1971 RP (Part), 1973 (Part), 1975 RP (Part), 1978 (Part), & 1979 (Part), in D.D. 125 Ha Tsuen, Yuen Long, N.T.

F.S. NOTES:

1. GENERAL

- 1.1 FIRE SERVICE INSTALLATIONS SHALL BE PROVIDED IN ACCORDANCE WITH THE CODES OF PRACTICE FOR MINIMUM FIRE SERVICE INSTALLATIONS AND EQUIPMENT AND INSPECTION, TESTING AND MAINTENANCE OF INSTALLATIONS AND EQUIPMENT 2012 (COP 2012), FSD CIRCULAR LETTERS AND THE HONG KONG WATERWORKS STANDARDS REQUIREMENTS.
- 1.2 ALL TUBES AND FITTINGS SHALL BE GALV. TO BS1387 MEDIUM GRADE WHERE PIPEWORK UP TO $\phi 150\text{mm}$.
- 1.3 ALL TUBES AND FITTINGS SHALL BE DUCTILE IRON TO BS EN648 K12 WHERE PIPEWORK ABOVE $\phi 150\text{mm}$.
- 1.4 ALL DRAIN PIPES SHALL BE DISCHARGED TO A CONSPICUOUS POSITION WITHOUT THE POSSIBILITY OF BEING SUBMERGED.
- 1.5 ALL PUCKLE FLANGES SHALL BE MADE OF DUCTILE IRON
- 1.6 THE AGGREGATE AREA OF OPENABLE WINDOWS NOT LESS THAN 6.25% OF THE FLOOR AREA OF THE STRUCTURE
- 1.7 VENTILATION/AIR CONDITIONING SYSTEM NOT TO BE PROVIDED.

2. HOSE REEL SYSTEM

- 2.1 NEW FIRE HOSE REEL SHALL BE PROVIDED AS INDICATED ON PLAN TO ENSURE THAT EVERY PART OF THE BUILDING CAN BE REACHED BY A LENGTH OF NOT MORE THAN 30m HOSE REEL TUBING.
- 2.2 THE WATER SUPPLY FOR HOSE REEL SYSTEM WILL BE FED FROM A NEW 2nd F.S. FIBREGLASS WATER TANK VIA TWO HOSE REEL PUMPS (DUTY/STANDBY) LOCATED INSIDE FS PUMP ROOM AT EXTERNAL AREA.
- 2.3 HOSE REEL PUMPS SHALL BE STARTED BY ACTIVATION OF ANY BREAKGLASS UNIT FITTED ASIDE EACH HOSE REEL SETS
- 2.4 ALL FIRE HOSE REEL OUTLETS SHOULD BE HOUSED IN GLASS FRONTED CABINET SECURED UNDER LOCK & KEY.
- 2.5 ALL FIRE HOSE REEL SHOULD BE PROVIDED WITH FSD APPROVED TYPE INSTRUCTION PLATE & MSD WARNING PLATE
- 2.6 SECONDARY ELECTRICITY SUPPLY DIRECTLY TIE OFF BEFORE C/P'S INCOMING MAIN SWITCH SHALL BE PROVIDED FOR THE FH/AH PUMPS.

3. AUTOMATIC SPRINKLER SYSTEM

- 3.1 NEW AUTOMATIC SPRINKLER SYSTEM SHALL BE PROVIDED AND INSTALLED IN ACCORDANCE WITH LFC RULES FOR AUTOMATIC SPRINKLER INSTALLATIONS INCORPORATING BS EN 12245: 2003 (INCLUDING TECHNICAL BULLETINS, NOTES, COMMENTARY AND RECOMMENDATIONS) AND FSD CIRCULAR LETTER NOTES, COMMENTARY AND RECOMMENDATIONS) AND FSD CIRCULAR LETTER NO. 3/2006 AND 3/2012. THE CLASSIFICATION OF THE OCCUPANCIES WILL BE ORDINARY HAZARD GROUP II.
- 3.2 ONE NEW 135m³ SPRINKLER WATER TANK WILL BE PROVIDED AS INDICATED ON PLAN. THE TOWN MAIN WATER SUPPLY WILL BE FED FROM SINGLE FHD.
- 3.3 TWO NEW SPRINKLER PUMPS (DUTY/STANDBY) AND ONE JOCKEY PUMP SHALL BE PROVIDED IN FS PUMP ROOM LOCATED AT EXTERNAL AREA.
- 3.4 NEW SPRINKLER CONTROL VALVE SET AND SPRINKLER INLET SHALL BE PROVIDED AS INDICATED ON PLAN.
- 3.5 A TEST VALVE SHALL BE PROVIDED FOR EACH ZONE OF SPRINKLER PIPE. THIS VALVE SHALL BE AT A CONSPICUOUS POSITION THAT WATER CAN BE DRAINED AWAY EASILY.
- 3.6 ALL SUBSIDIARY STOP VALVES TO BE ELECTRIC MONITORING TYPE.
- 3.7 ALL ELECTRIC TYPE VALVES SHOULD GIVE VISUAL SIGNALS TO FIRE SERVICE MAIN SUPERVISORY CONTROL PANEL TO INDICATE THE STATUS (OPEN/CLOSE) OF THE VALVES.
- 3.8 SECONDARY ELECTRICITY SUPPLY DIRECTLY TIE OFF BEFORE C/P'S INCOMING MAIN SWITCH SHALL BE PROVIDED FOR THE SPRINKLER PUMPS.
- 3.9 THE SPRINKLER SYSTEM DESIGN IS BASED ON THE FOLLOWINGS:
HAZARD CLASS : ORDINARY HAZARD GROUP II
TYPE OF STORAGE : FREE STANDING
STORAGE CATEGORY : CATEGORY I
MAXIMUM STORAGE HEIGHT : 4.0m
SPRINKLER PROTECTION : CEILING PROTECTION ONLY

4. FIRE ALARM SYSTEM

- 4.1 NEW FIRE ALARM SYSTEM SHALL BE PROVIDED IN ACCORDANCE WITH BS 5839-1:2002 442:2008 AND FSD CIRCULAR LETTERS NO. 1/2009 & 3/2010.
- 4.2 NEW BREAKGLASS UNITS AND FIRE ALARM BELLS SHALL BE PROVIDED AT ALL NEW FIRE HOSE REEL POINTS. THE FIRE ALARM INSTALLATION WILL BE INTEGRATED WITH THE HOSE REEL SYSTEM.

5. EMERGENCY LIGHTING

- 5.1 EMERGENCY LIGHTING SHALL BE PROVIDED IN ACCORDANCE WITH 'HS 5278-PART 1: 2011 AND BS EN 1838: 2013', COVERING ALL AREA. EMERGENCY LIGHTINGS SHALL BE BACKED UP BY BUILT-IN BATTERY AND CAPABLE OF MAINTAINING FUNCTION OF NOT LESS THAN 2 HOURS IN CASE OF POWER FAILURE.

6. EXIT SIGN

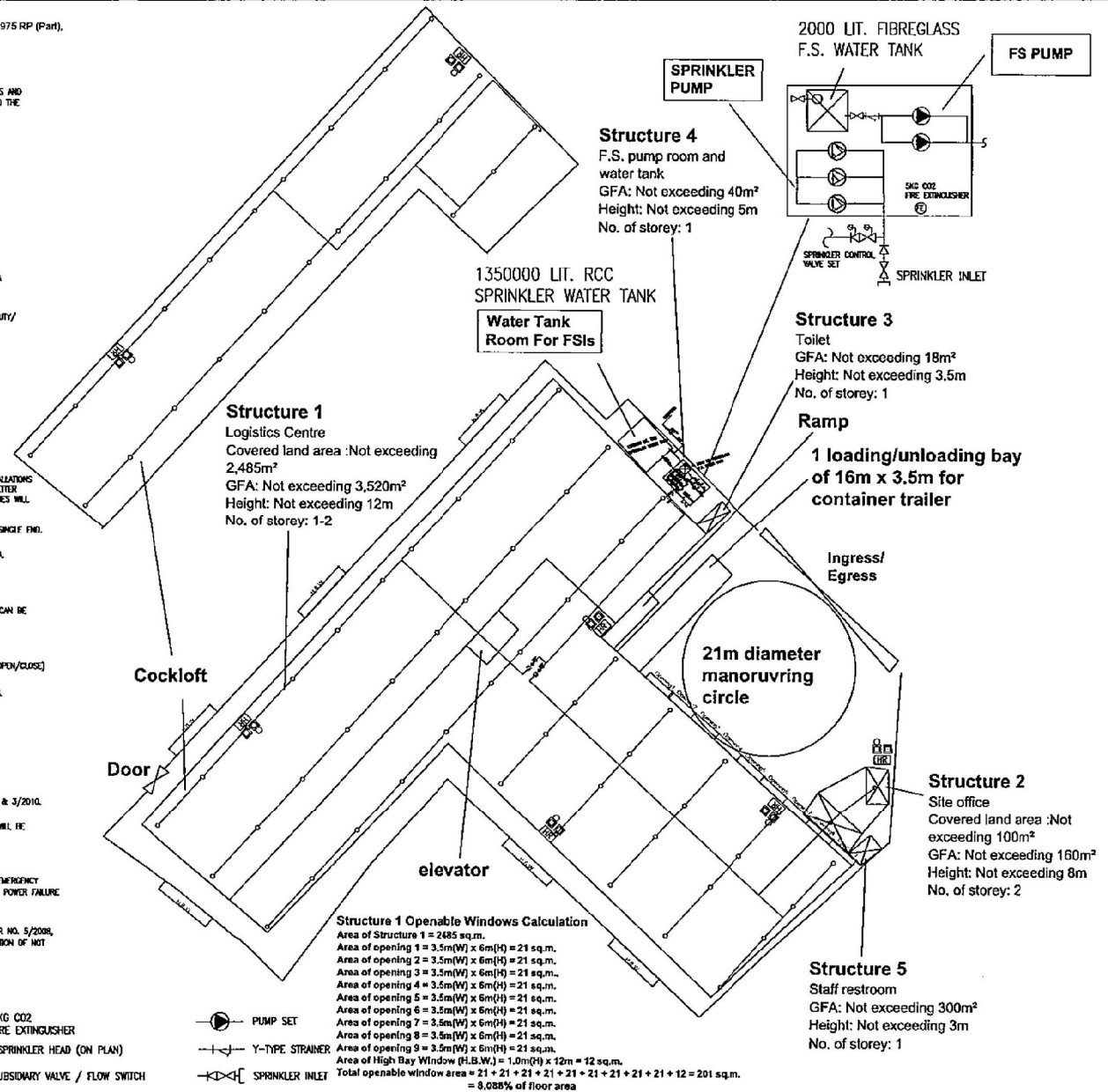
- 6.1 ALL EXIT SIGNS/DIRECTIONAL EXIT SIGNS SHALL BE PROVIDED IN ACCORDANCE WITH SECTION 5.10 OF COP 2012 AND FSD CIRCULAR LETTER NO. 5/2008, FOR THE BUILDING. EXIT SIGNS/DIRECTIONAL EXIT SIGNS SHALL BE BACKED UP BY BUILT-IN BATTERY AND CAPABLE OF MAINTAINING FUNCTION OF NOT LESS THAN 2 HOURS IN CASE OF POWER FAILURE.

7. PORTABLE APPLIANCES

- 7.1 PORTABLE HAND OPERATED APPLIANCES SHALL BE PROVIDED AS INDICATED ON PLAN.

LEGEND

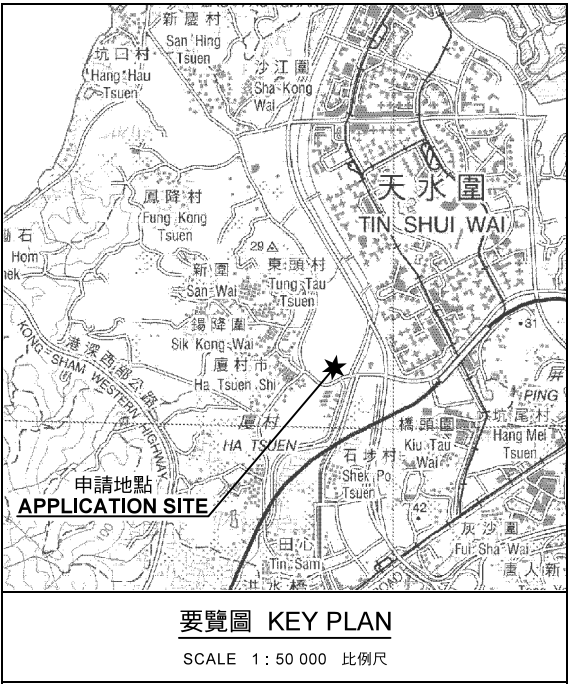
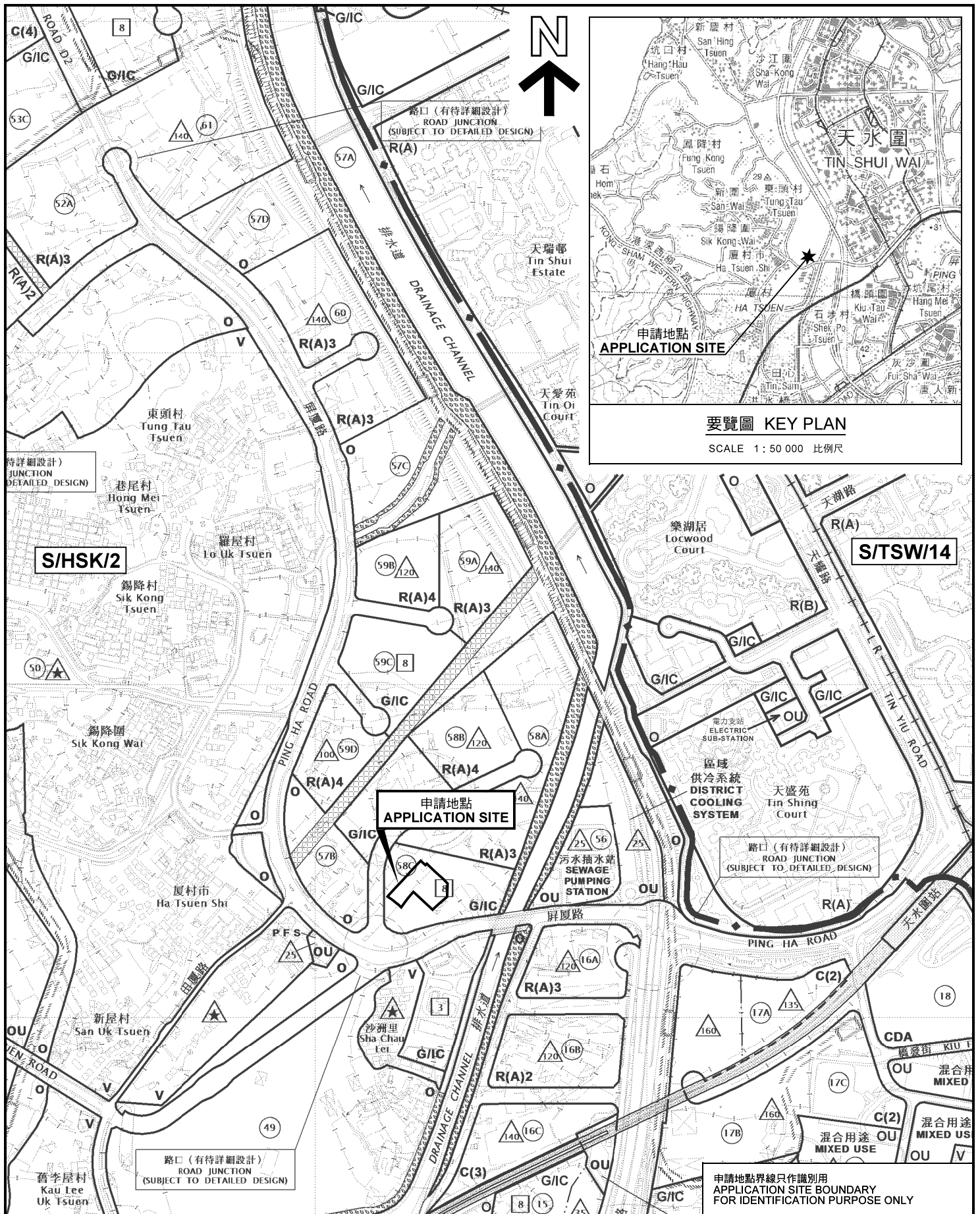
HOSE REEL	EMERGENCY LIGHT	3KG CO2 FIRE EXTINGUISHER	PUMP SET
BREAK GLASS UNIT	EXIT SIGN	SPRINKLER HEAD (ON PLAN)	Y-TYPE STRAINER
FIRE ALARM BELL	NON-RETURN VALVE	SUBSIDIARY VALVE / FLOW SWITCH	SPRINKLER INLET



PROJECT : Proposed Temporary Logistics Centre for a Period of 3 Years at Lots 196B (Part), 1970 (Part), 1971 RP (Part), 1973 (Part), 1975 RP (Part), 1978 (Part), & 1979 (Part), in D.D. 125 Ha Tsuen, Yuen Long, N.T.	DRAWING TITLE : F.S. Notes, Legend, Fire Service Installation Layout Plan	ARCHITECT :	CONSULTANT :	FIRE SERVICE CONTRACTOR : Century Fire Service Engineering Co., Ltd.	NAME C.K.LING	DATE 25 JUN 2020	DRAWING NO : FS-01	REV. 0
	REV	DESCRIPTION	DATE	CHECKED BY	APPROVED BY	SCALE : 1:1000 (A4)	SOURCE : B.O.O. Ref F.S.D. Ref.	

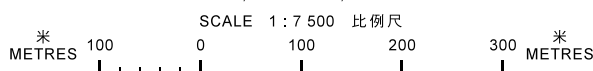
(摘錄自申請人於 30. 6. 2020 呈交的申請書)
(Extract from Applicant's
Submission of 30.6.2020)

參考編號 REFERENCE No. A/HSK/241	繪圖 DRAWING A-5
------------------------------------	-------------------



位置圖 LOCATION PLAN

臨時物流中心(為期3年)
元朗厦村丈量約份第125約地段第1968號(部分)、
第1970號(部分)、第1971號餘段(部分)、第1973號(部分)、
第1975號餘段(部分)、第1978號(部分)及第1979號(部分)
TEMPORARY LOGISTICS CENTRE FOR A PERIOD OF 3 YEARS
LOTS 1968 (PART), 1970 (PART), 1971 RP (PART),
1973 (PART), 1975 RP (PART), 1978 (PART) AND 1979 (PART)
IN D.D.125, HA TSUEN, YUEN LONG



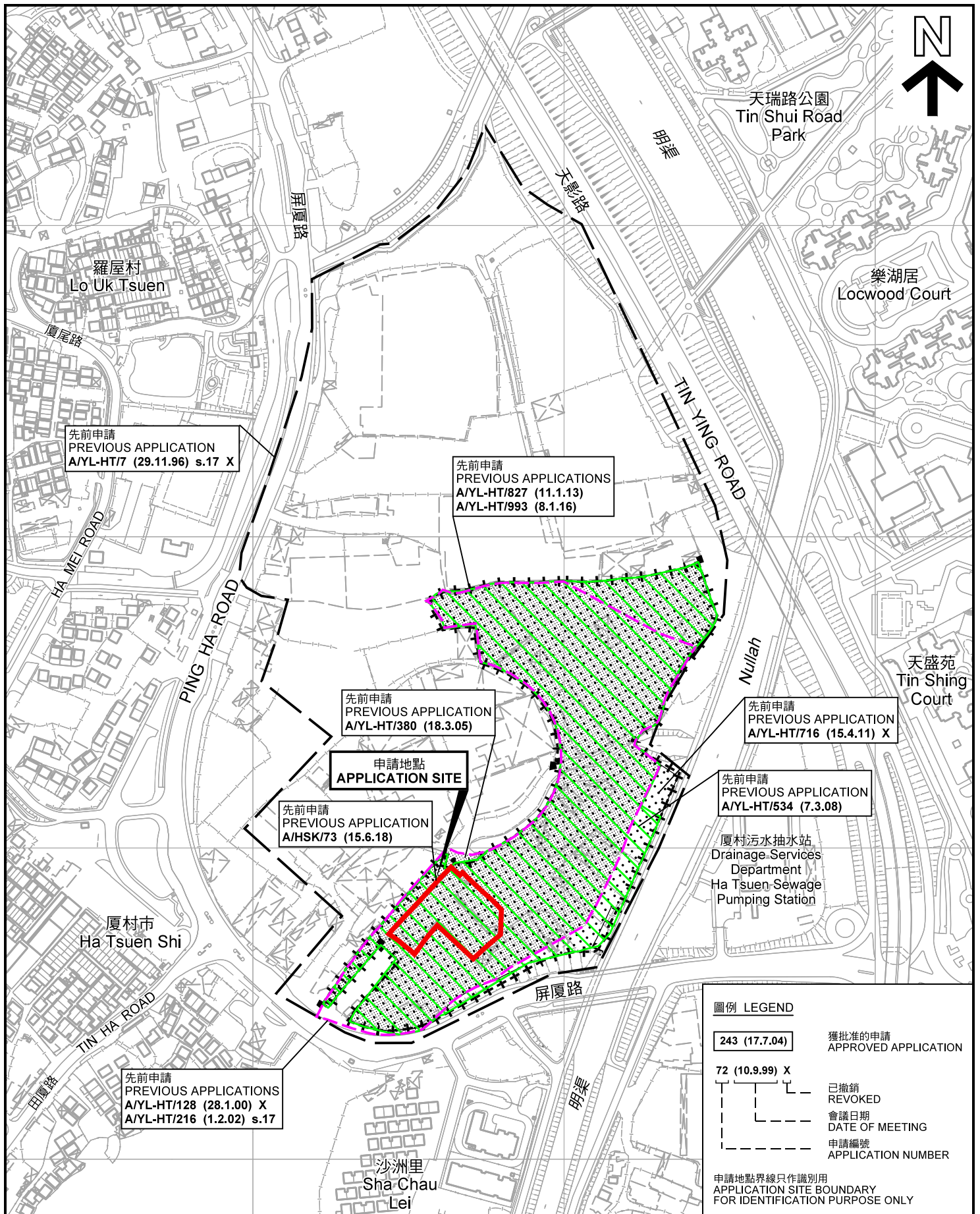
本摘要圖於2020年8月4日擬備，
所根據的資料為於2018年10月16日
核准的分區計劃大綱圖編號 S/HSK/2
EXTRACT PLAN PREPARED ON 4.8.2020
BASED ON OUTLINE ZONING PLAN No.
S/HSK/2 APPROVED ON 16.10.2018

**規劃署
PLANNING
DEPARTMENT**



參考編號
REFERENCE No.
A/HSK/241

**圖 PLAN
A-1a**



先前申請圖 PREVIOUS APPLICATIONS PLAN

本摘要圖於2020年8月6日擬備，
所根據的資料為測量圖編號
6-NW-2D、3C、7B、7D、8A 及 8C
EXTRACT PLAN PREPARED ON 6.8.2020
BASED ON SURVEY SHEETS No.
6-NW-2D, 3C, 7B, 7D, 8A & 8C

臨時物流中心(為期3年)
元朗厦村丈量約份第125約地段第1968號(部分)、
第1970號(部分)、第1971號餘段(部分)、第1973號(部分)、
第1975號餘段(部分)、第1978號(部分)及第1979號(部分)
TEMPORARY LOGISTICS CENTRE FOR A PERIOD OF 3 YEARS
LOTS 1968 (PART), 1970 (PART), 1971 RP (PART),
1973 (PART), 1975 RP (PART), 1978 (PART) AND 1979 (PART)
IN D.D.125, HA TSUEN, YUEN LONG

SCALE 1 : 4 000 比例尺

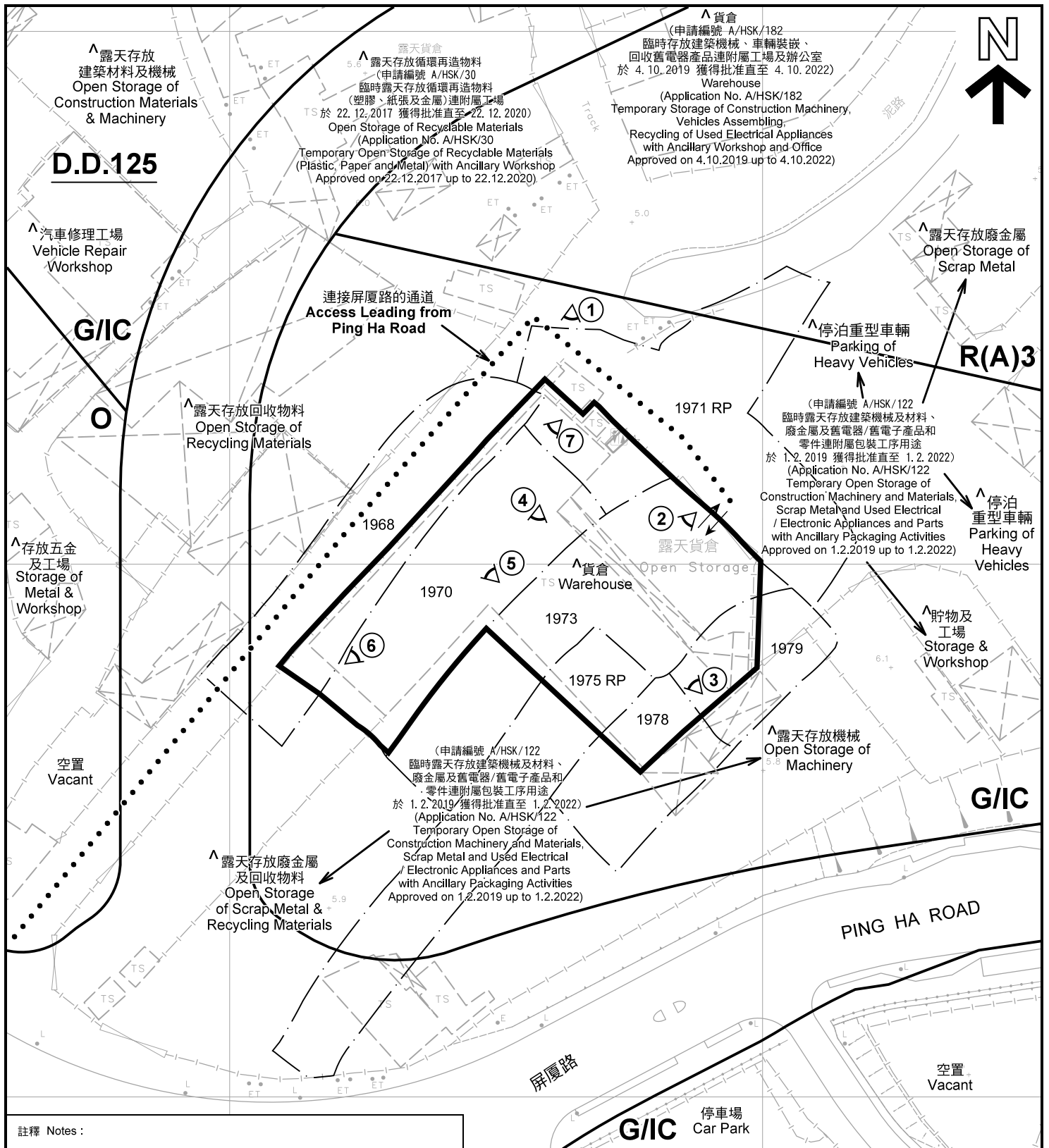
米 METRES 80 0 80 160 米 METRES

規劃署
PLANNING
DEPARTMENT



參考編號
REFERENCE No.
A/HSK/241

圖 PLAN
A-1b



註釋 Notes :

- (1) 2020年7月13日勘測的土地用途
Land uses shown on this plan are in accordance with the land use survey conducted by the Planning Department on 13.7.2020
- (2) * 土地用途跟1992年3月勘測的土地用途一致
Indicates that the use is the same as that revealed by the land use survey conducted by the Planning Department in Mar 1992
- (3) ^ 土地用途跟1992年3月勘測的土地用途有別
Indicates that the use is different from that revealed by the land use survey conducted by the Planning Department in Mar 1992

圖例 LEGEND

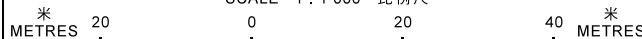
- 申請地點(界線只作識別用)
APPLICATION SITE (BOUNDARY FOR IDENTIFICATION PURPOSE ONLY)
- R(A)** 住宅(甲類)
RESIDENTIAL (GROUP A)
- G/IC** 政府、機構或社區
GOVERNMENT, INSTITUTION OR COMMUNITY
- 休憩用地
OPEN SPACE
- 實地照片的觀景點
VIEWING POINT OF SITE PHOTO
- 入口/出口
INGRESS / EGRESS

平面圖 SITE PLAN

本摘要圖於2020年8月6日擬備，所根據的資料為測量圖編號 6-NW-7B 及 7D
EXTRACT PLAN PREPARED ON 6.8.2020 BASED ON SURVEY SHEETS No. 6-NW-7B & 7D

臨時物流中心(為期3年)
元朗厦村丈量約份第125約地段第1968號(部分)、
第1970號(部分)、第1971號餘段(部分)、第1973號(部分)、
第1975號餘段(部分)、第1978號(部分)及第1979號(部分)
TEMPORARY LOGISTICS CENTRE FOR A PERIOD OF 3 YEARS
LOTS 1968 (PART), 1970 (PART), 1971 RP (PART),
1973 (PART), 1975 RP (PART), 1978 (PART) AND 1979 (PART)
IN D.D.125, HA TSUEN, YUEN LONG

SCALE 1 : 1 000 比例尺

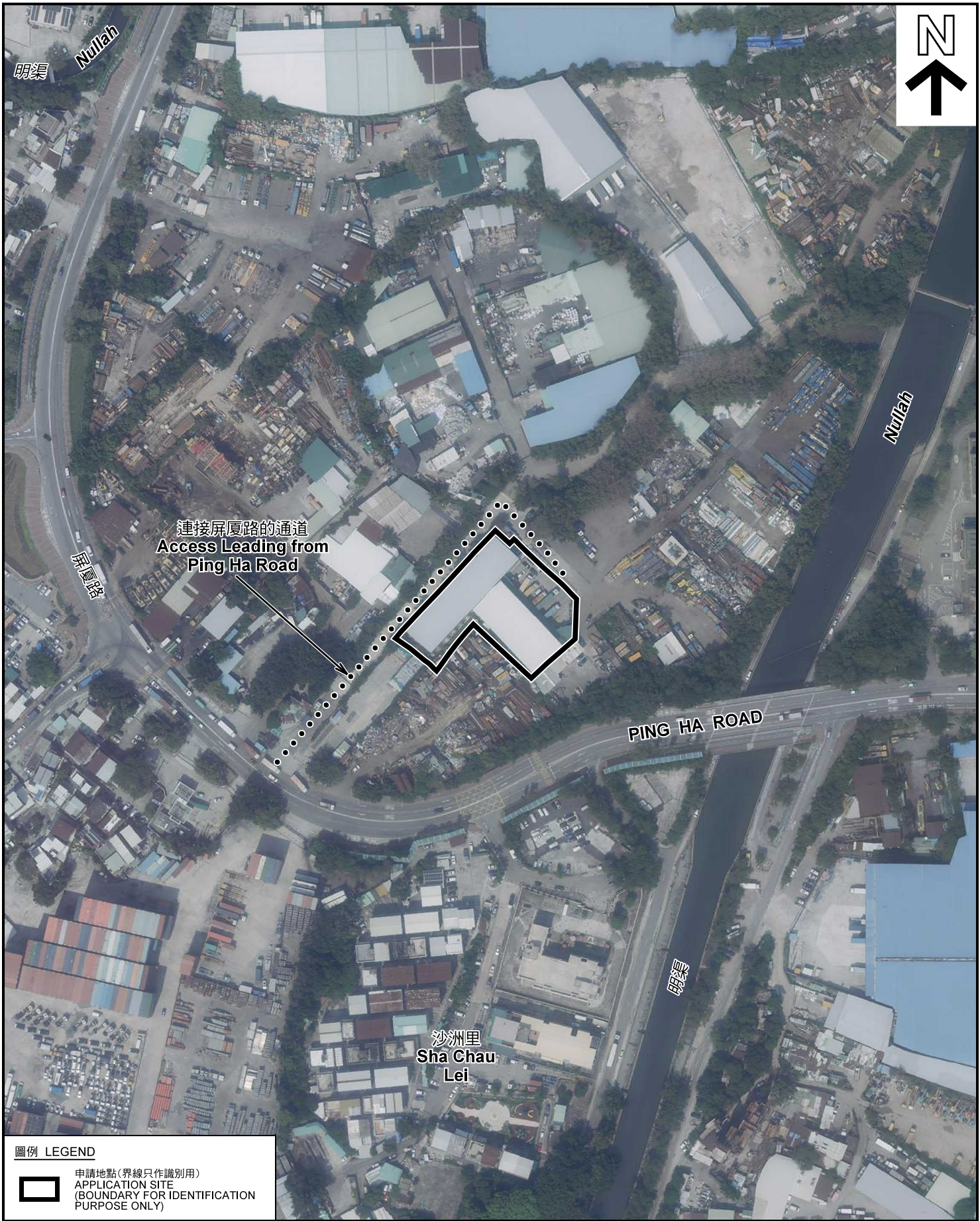


規劃署
PLANNING
DEPARTMENT



參考編號
REFERENCE No.
A/HSK/241

圖 PLAN
A-2



連接屏廈路的通道
Access Leading from
Ping Ha Road

圖例 LEGEND



申請地點(界線只作識別用)
APPLICATION SITE
(BOUNDARY FOR IDENTIFICATION
PURPOSE ONLY)

本摘要圖於2020年8月6日擬備，所根據的資料為地政總署於2019年10月18日拍得的航攝照片編號 E073094C
EXTRACT PLAN PREPARED ON 6.8.2020
BASED ON AERIAL PHOTO No.
E073094C TAKEN ON 18.10.2019
BY LANDS DEPARTMENT

航攝照片 AERIAL PHOTO

臨時物流中心(為期3年)
元朗厦村丈量約份第125約地段第1968號(部分)、
第1970號(部分)、第1971號餘段(部分)、第1973號(部分)、
第1975號餘段(部分)、第1978號(部分)及第1979號(部分)
TEMPORARY LOGISTICS CENTRE FOR A PERIOD OF 3 YEARS
LOTS 1968 (PART), 1970 (PART), 1971 RP (PART),
1973 (PART), 1975 RP (PART), 1978 (PART) AND 1979 (PART)
IN D.D.125, HA TSUEN, YUEN LONG

規劃署
PLANNING
DEPARTMENT



參考編號
REFERENCE No.
A/HSK/241

圖 PLAN
A-3

申請地點
APPLICATION SITE



1

連接屏廈路的通道
Access Leading from
Ping Ha Road



2

申請地點
APPLICATION SITE

連接屏廈路的通道
Access Leading from
Ping Ha Road



3

申請地點
APPLICATION SITE

實地照片 SITE PHOTOS

本圖於2020年8月4日擬備，所根據的資料為攝於2020年7月13日的實地照片
PLAN PREPARED ON 4.8.2020
BASED ON SITE PHOTOS TAKEN
ON 13.7.2020

臨時物流中心(為期3年)
元朗厦村丈量約份第125約地段第1968號(部分)、
第1970號(部分)、第1971號餘段(部分)、第1973號(部分)、
第1975號餘段(部分)、第1978號(部分)及第1979號(部分)
TEMPORARY LOGISTICS CENTRE FOR A PERIOD OF 3 YEARS
LOTS 1968 (PART), 1970 (PART), 1971 RP (PART),
1973 (PART), 1975 RP (PART), 1978 (PART) AND 1979 (PART)
IN D.D.125, HA TSUEN, YUEN LONG

規劃署
PLANNING
DEPARTMENT



參考編號
REFERENCE No.
A/HSK/241

圖 PLAN
A-4a



4

申請地點 (地下)
APPLICATION SITE (G/F)



5

申請地點 (地下)
APPLICATION SITE (G/F)



6

申請地點 (一樓)
APPLICATION SITE (1/F)



7

申請地點 (一樓)
APPLICATION SITE (1/F)

實地照片 SITE PHOTOS

本圖於2020年8月6日擬備，所根據的資料為攝於2020年7月13日的實地照片
PLAN PREPARED ON 6.8.2020
BASED ON SITE PHOTOS TAKEN ON 13.7.2020

臨時物流中心(為期3年)
元朗厦村丈量約份第125約地段第1968號(部分)、
第1970號(部分)、第1971號餘段(部分)、第1973號(部分)、
第1975號餘段(部分)、第1978號(部分)及第1979號(部分)
TEMPORARY LOGISTICS CENTRE FOR A PERIOD OF 3 YEARS
LOTS 1968 (PART), 1970 (PART), 1971 RP (PART),
1973 (PART), 1975 RP (PART), 1978 (PART) AND 1979 (PART)
IN D.D.125, HA TSUEN, YUEN LONG

規劃署
PLANNING
DEPARTMENT



參考編號
REFERENCE No.
A/HSK/241

圖 PLAN
A-4b