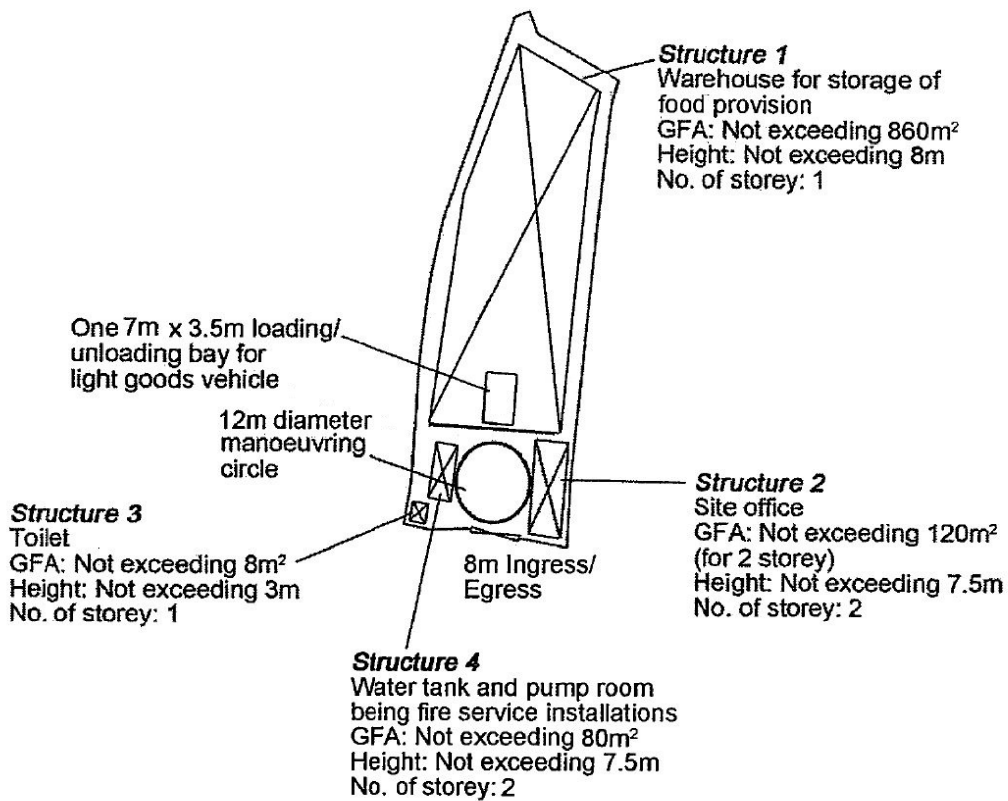


<p>Project 項目名稱: Proposed Temporary Warehouse for Storage of Food Provision for a Period of 3 Years at Lots 673 (Part), 674 (Part), 675 S.A, 675 S.B, 676 (Part) in D.D.125 and Adjoining Government Land, Ha Tsuen, Yuen Long, N.T.</p>	<p>Drawing Title 圖目: Extract from OZP No. S/HSK/1</p>	<p>Remarks 備註: ●●● Vehicular access leading from San Sik Road</p>
	<p>Drawing No. 圖號: Figure 2</p>	<p>Scale 比例: 1:7500</p>

(摘錄自申請人於 4.1.2018 呈交的申請書)
 (Extract from Applicant's Submission of 4.1.2018)

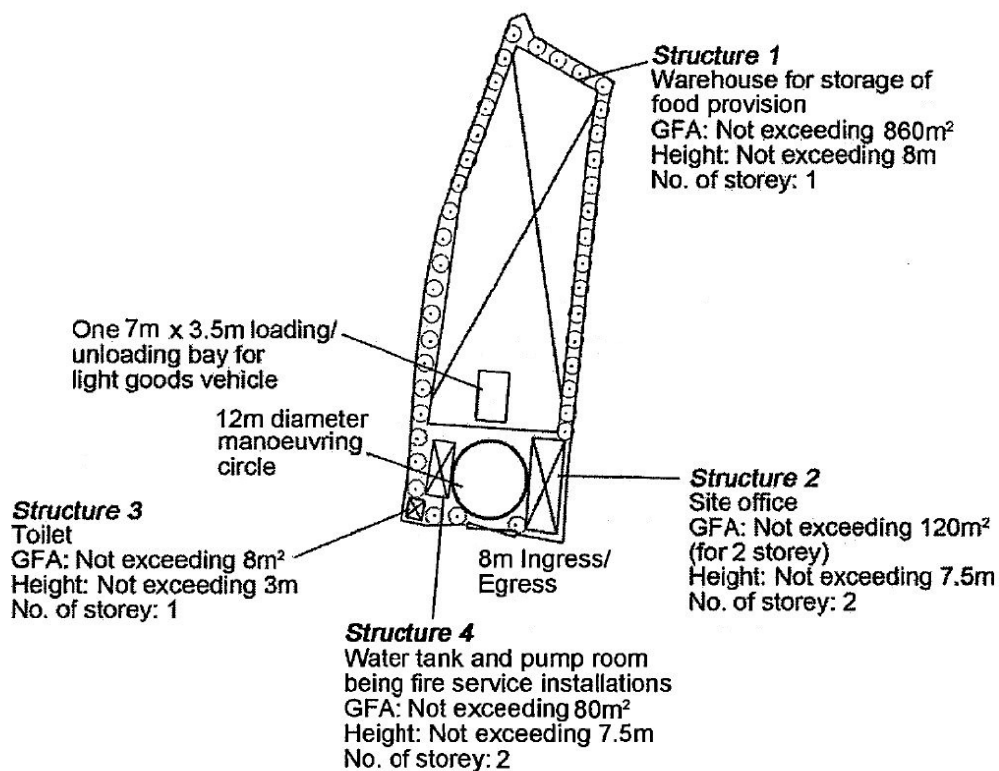
<p>參考編號 REFERENCE No. A/HSK/49</p>	<p>繪圖 DRAWING A-1</p>
---	-----------------------------------



<p>Project 項目名稱:</p> <p>Proposed Temporary Warehouse for Storage of Food Provision for a Period of 3 Years at Lots 673 (Part), 674 (Part), 675 S.A, 675 S.B, 676 (Part) in D.D.125 and Adjoining Government Land, Ha Tsuen, Yuen Long, N.T.</p>	<p>Drawing Title 圖目:</p> <p>Proposed Layout Plan</p>	<p>Remarks 備註:</p>
	<p>Drawing No. 圖號:</p> <p>Figure 3</p>	<p>Scale 比例:</p> <p>1:1000</p>

(摘錄自申請人於 4. 1. 2018 提交的申請書)
(Extract from Applicant's Submission of 4.1.2018)

<p>參考編號 REFERENCE No. A/HSK/49</p>	<p>繪圖 DRAWING A-2</p>
--	---------------------------

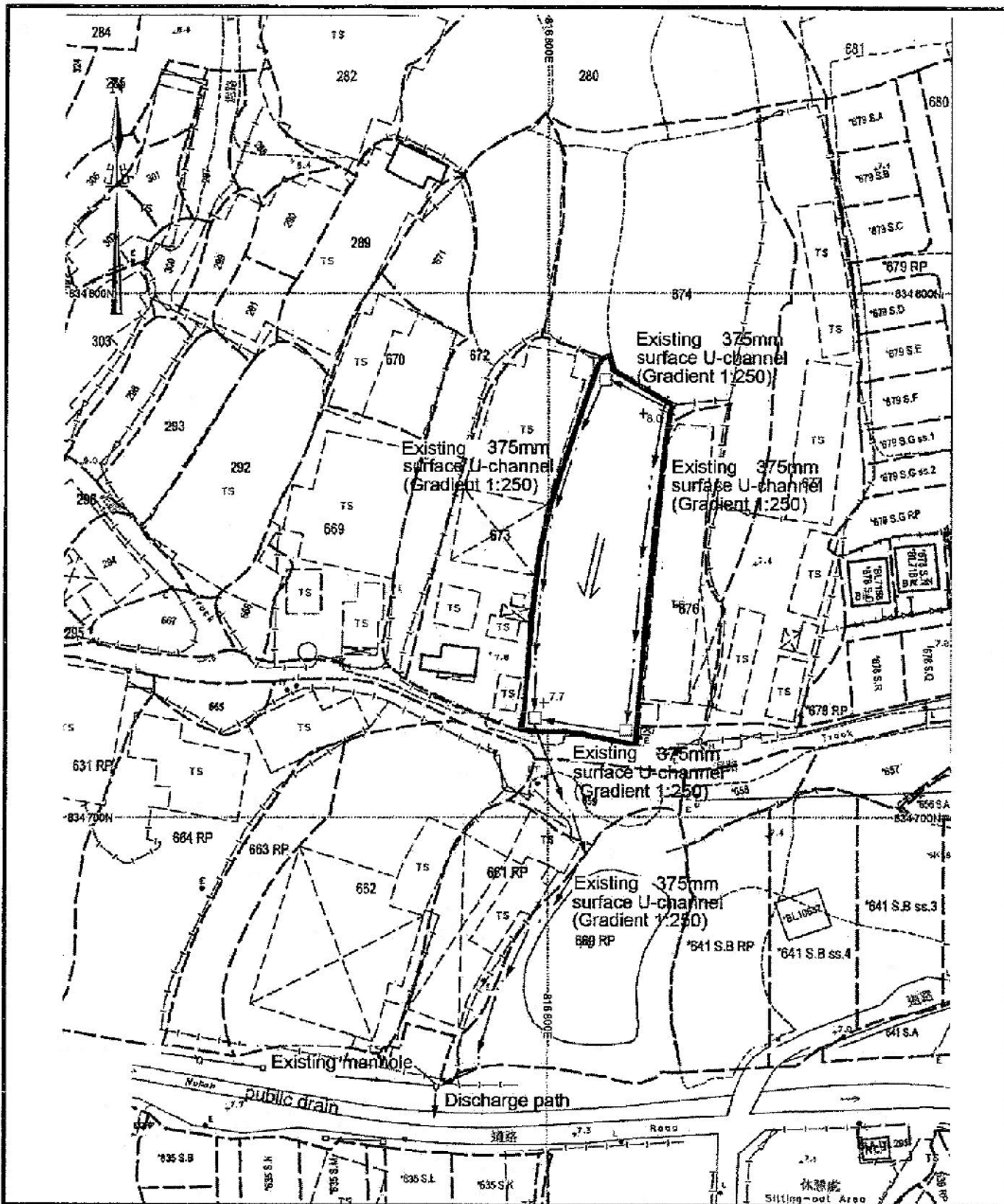


Tree	Approximate Height	Spacing
⊙ Existing <i>Ficus microcarpa</i>	2.75m	3m to 4m

Project 項目名稱: Proposed Temporary Warehouse for Storage of Food Provision for a Period of 3 Years at Lots 673 (Part), 674 (Part), 675 S.A, 675 S.B, 676 (Part) in D.D.125 and Adjoining Government Land, Ha Tsuen, Yuen Long, N.T.	Drawing Title 圖目: Proposed Tree Preservation Plan	Remarks 備註:
	Drawing No. 圖號: Figure 4	

(摘錄自申請人於 4. 1. 2018 呈交的申請書)
(Extract from Applicant's Submission of 4.1.2018)

參考編號 REFERENCE No. A/HSK/49	繪圖 DRAWING A-3
-----------------------------------	-------------------



Project 項目名稱:

Proposed Temporary Warehouse for Storage of Food Provision for a Period of 3 Years at Lots 673 (Part), 674 (Part), 675 S.A, 675 S.B, 676 (Part) in D.D.125 and Adjoining Government Land, Ha Tsuen, Yuen Long, N.T.

Drawing Title 圖目:

As-built Drainage Plan

Drawing No. 圖號:

Figure 5

Remarks 備註:

- Proposed catchpit
- +7.7 Level (in mPD)
- ← Flow of surface runoff

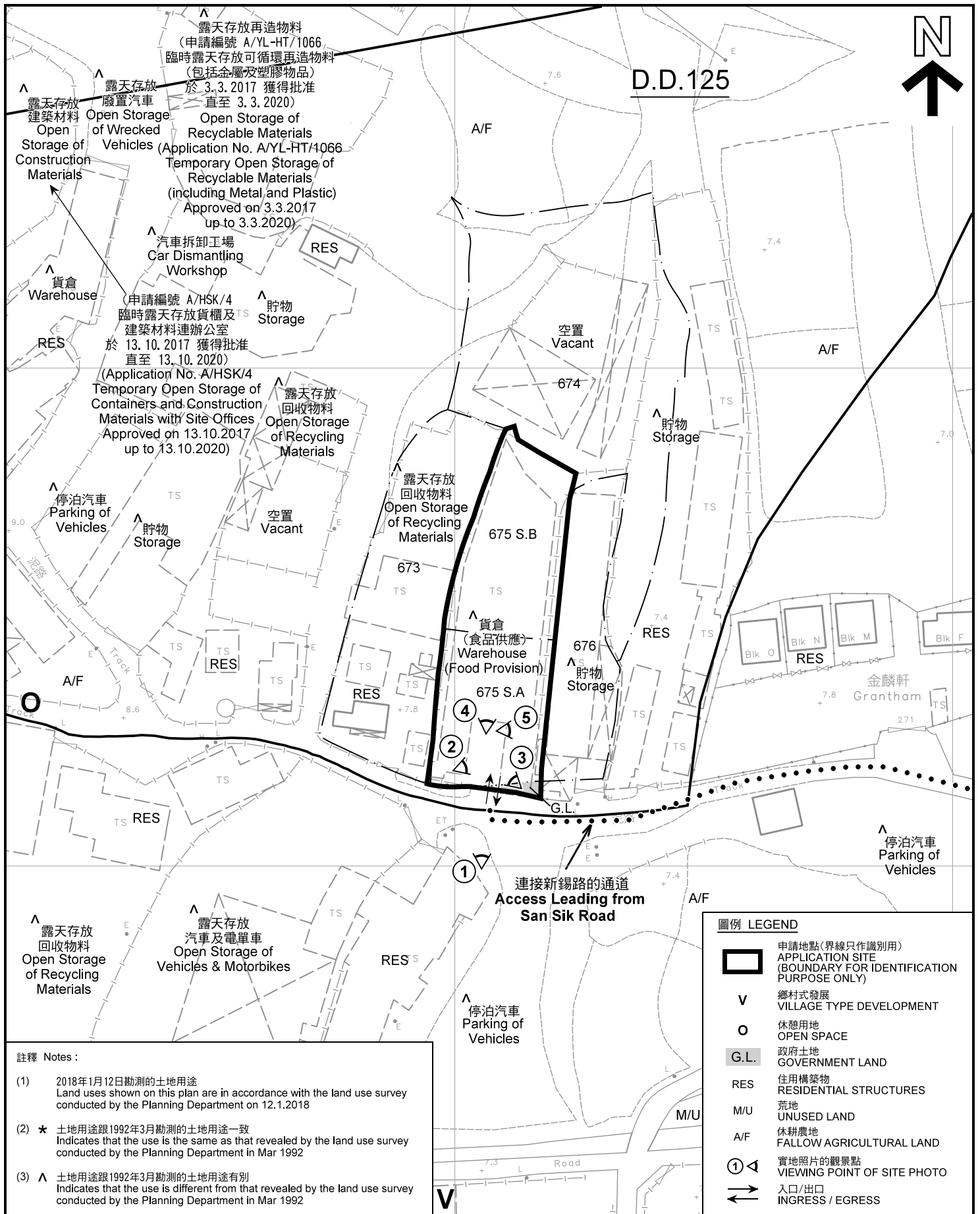
Scale 比例:

1:1000

(摘錄自申請人於 4.1.2018 呈交的申請書)
(Extract from Applicant's Submission of 4.1.2018)

參考編號
REFERENCE No.
A/HSK/49

繪圖 DRAWING
A-4



註釋 Notes :

- (1) 2018年1月12日勘測的土地用途
Land uses shown on this plan are in accordance with the land use survey conducted by the Planning Department on 12.1.2018
- (2) * 土地用途跟1992年3月勘測的土地用途一致
Indicates that the use is the same as that revealed by the land use survey conducted by the Planning Department in Mar 1992
- (3) ^ 土地用途跟1992年3月勘測的土地用途有別
Indicates that the use is different from that revealed by the land use survey conducted by the Planning Department in Mar 1992

平面圖 SITE PLAN

臨時貨倉存放食品 (為期3年)
元朗厦村丈量約份第125約地段第673號(部分)、第674號(部分)、
第675號A分段、第675號B分段及第676號(部分)和毗連政府土地
TEMPORARY WAREHOUSE FOR STORAGE OF
FOOD PROVISION FOR A PERIOD OF 3 YEARS
LOTS 673 (PART), 674 (PART), 675 S.A, 675 S.B AND
676 (PART) IN D.D.125 AND ADJOINING GOVERNMENT LAND,
HA TSUEN, YUEN LONG
SCALE 1 : 1 000 比例尺

米 METRES 20 0 20 40 米 METRES

圖例 LEGEND

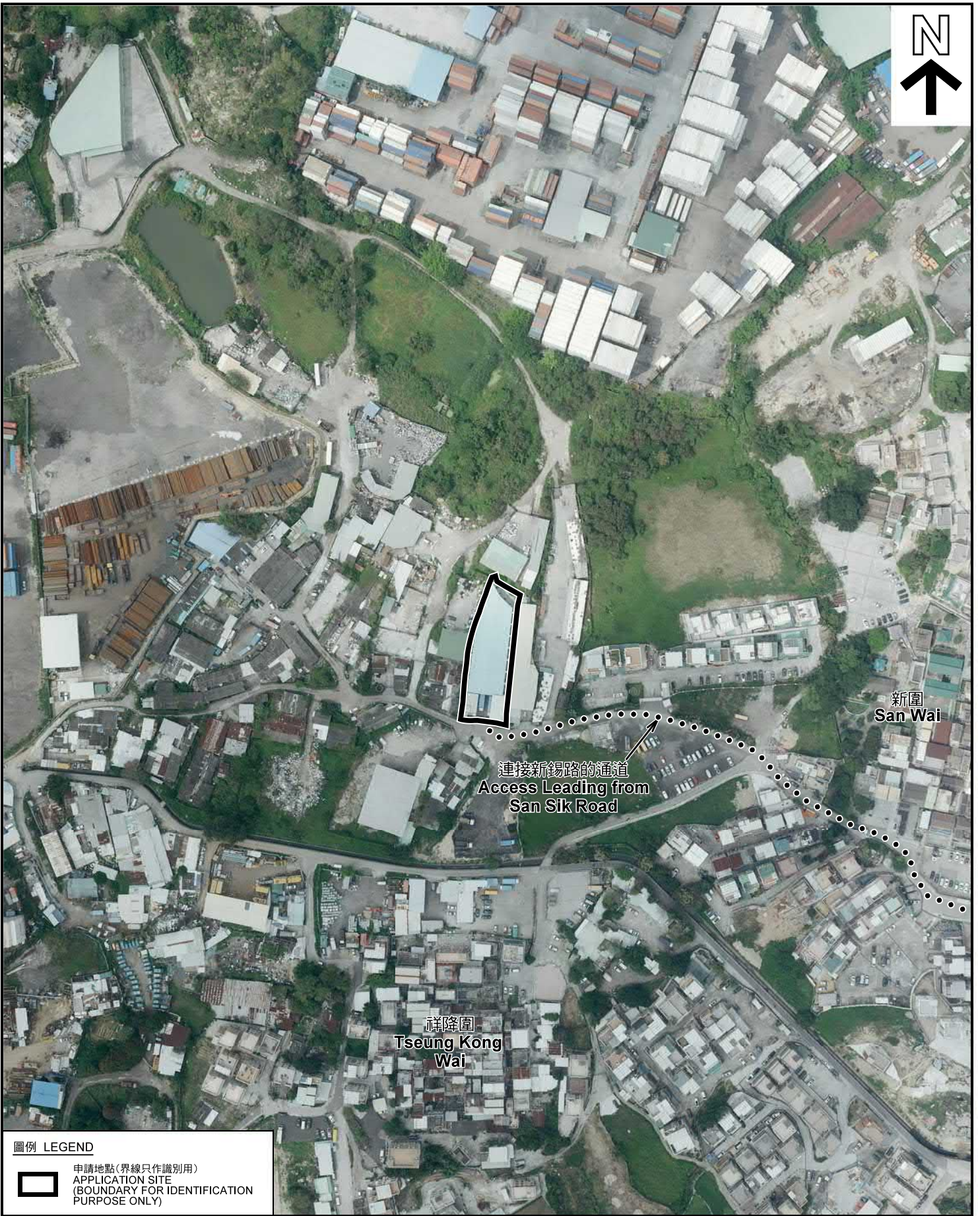
- 申請地點(界線只作識別用)
APPLICATION SITE (BOUNDARY FOR IDENTIFICATION PURPOSE ONLY)
- 鄉村式發展
VILLAGE TYPE DEVELOPMENT
- 休憩用地
OPEN SPACE
- 政府土地
GOVERNMENT LAND
- 住用構築物
RESIDENTIAL STRUCTURES
- 荒地
UNUSED LAND
- 休耕農地
FALLOW AGRICULTURAL LAND
- 實地照片的觀景點
VIEWING POINT OF SITE PHOTO
- 入口/出口
INGRESS / EGRESS

**規劃署
PLANNING
DEPARTMENT**



參考編號
REFERENCE No.
A/HSK/49

**圖 PLAN
A-2**



圖例 LEGEND



申請地點(界線只作識別用)
APPLICATION SITE
(BOUNDARY FOR IDENTIFICATION
PURPOSE ONLY)

本摘要圖於2018年2月8日擬備，所根據的資料為地政總署於2017年4月4日拍得的航攝照片編號 E020121C
EXTRACT PLAN PREPARED ON 8.2.2018
BASED ON AERIAL PHOTO No.
E020121C TAKEN ON 4.4.2017
BY LANDS DEPARTMENT

航攝照片 AERIAL PHOTO

臨時貨倉存放食品(為期3年)
元朗廈村丈量約份第125約地段第673號(部分)、第674號(部分)、
第675號A分段、第675號B分段及第676號(部分)和毗連政府土地
TEMPORARY WAREHOUSE FOR STORAGE OF
FOOD PROVISION FOR A PERIOD OF 3 YEARS
LOTS 673 (PART), 674 (PART), 675 S.A, 675 S.B AND
676 (PART) IN D.D.125 AND ADJOINING GOVERNMENT LAND,
HA TSUEN, YUEN LONG

規劃署
PLANNING
DEPARTMENT



參考編號
REFERENCE No.
A/HSK/49

圖 PLAN
A-3



本圖於2018年2月8日擬備，所根據的資料為攝於2018年1月12日的實地照片
PLAN PREPARED ON 8.2.2018
BASED ON SITE PHOTOS
TAKEN ON 12.1.2018

實地照片 SITE PHOTOS

臨時貨倉存放食品（為期3年）
元朗廈村丈量約份第125約地段第673號(部分)、第674號(部分)、
第675號A分段、第675號B分段及第676號(部分)和毗連政府土地
TEMPORARY WAREHOUSE FOR STORAGE OF
FOOD PROVISION FOR A PERIOD OF 3 YEARS
LOTS 673 (PART), 674 (PART), 675 S.A, 675 S.B AND
676 (PART) IN D.D.125 AND ADJOINING GOVERNMENT LAND,
HA TSUEN, YUEN LONG

規劃署
PLANNING
DEPARTMENT



參考編號
REFERENCE No.
A/HSK/49

圖 PLAN
A-4a



申請地點
APPLICATION SITE



申請地點
APPLICATION SITE

實地照片 SITE PHOTOS

臨時貨倉存放食品（為期3年）
元朗廈村丈量約份第125約地段第673號(部分)、第674號(部分)、
第675號A分段、第675號B分段及第676號(部分)和毗連政府土地
TEMPORARY WAREHOUSE FOR STORAGE OF
FOOD PROVISION FOR A PERIOD OF 3 YEARS
LOTS 673 (PART), 674 (PART), 675 S.A, 675 S.B AND
676 (PART) IN D.D.125 AND ADJOINING GOVERNMENT LAND,
HA TSUEN, YUEN LONG

規劃署
PLANNING
DEPARTMENT



參考編號
REFERENCE No.
A/HSK/49

圖 PLAN
A-4b

本圖於2018年2月13日擬備，所根據的資料為攝於2018年1月12日的實地照片
PLAN PREPARED ON 13.2.2018
BASED ON SITE PHOTOS
TAKEN ON 12.1.2018