

Project:  
Proposed Open Storage  
and Warehouse  
Lot 192 SA, 192 S.B,  
193 in DD125

Scale: Not to Scale

Drawn By:

OZP :  
Planning No. :  
Zone :  
District :

Legend:

Vehicle Access Plan

(摘錄自申請人於 9.2.2018 呈交的申請書)  
(Extract from Applicant's  
Submission of 9.2.2018)

|                                   |                   |
|-----------------------------------|-------------------|
| 參考編號<br>REFERENCE No.<br>A/HSK/57 | 繪圖 DRAWING<br>A-1 |
|-----------------------------------|-------------------|



Total Site Area: 3,755m<sup>2</sup>  
 Covered Area: 2,040.2m<sup>2</sup>  
 Uncovered Area: 1,714.8m<sup>2</sup>

**Structure A**  
 Use: Warehouse  
 Covered Area: 2,017.5m<sup>2</sup>  
 Height: 8.23m (One Storey)

**Loading/Unloading Bay**  
 Use: Loading/Unloading  
 Dimension: 3.5m x 11m  
 (MGV Only)

**Structure B**  
 Use: Site Office  
 Covered Area: 14.7m<sup>2</sup>  
 Dimension: 12.2m x 2.5m  
 Height: 3.5m (One Storey)

**Structure C**  
 Use: Toilet  
 Covered Area: 8m<sup>2</sup>  
 Dimension: 2m x 4m  
 Height: 3.5m (One Storey)

**Parking Space**  
 Use: Staff Parking  
 Dimension: 2.5m x 5m (Private Car Only)

Ingress/Egress

Project:  
**Proposed Open Storage  
 and Warehouse**  
 Lot 192 S.A, 192 S.B,  
 193 in DD125

Scale: **1:600**

Drawn by:

OZP :  
 Planning No. :  
 Zone :  
 District :

Legend:

**Layout Plan**



Application Boundary

Proposed New Plant

- Chinese Banyan Tree  
Height: about 2.75m  
Tree Spacing: 3m  
Total Amount: 22

Ingress/Egress

Project:  
Proposed Open Storage  
and Warehouse  
  
Lot 192 S.A, 192 S.B,  
193 in DD125

Scale: 1:500  
Drawn By:

OZP :  
Planning No.:  
Zone :  
District :

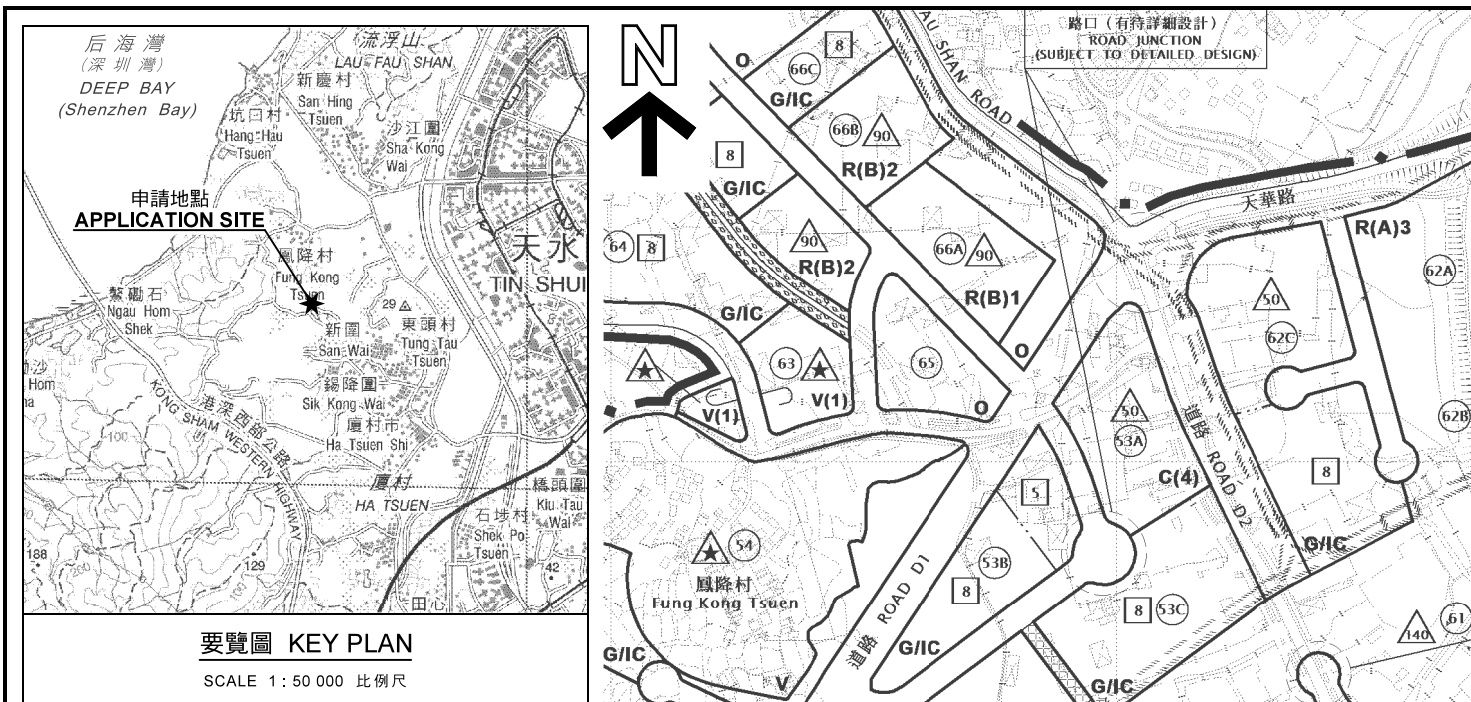
Legend:

Landscape  
Proposal

(摘錄自申請人於 9. 2. 2018 呈交的申請書)  
(Extract from Applicant's  
Submission of 9.2.2018)

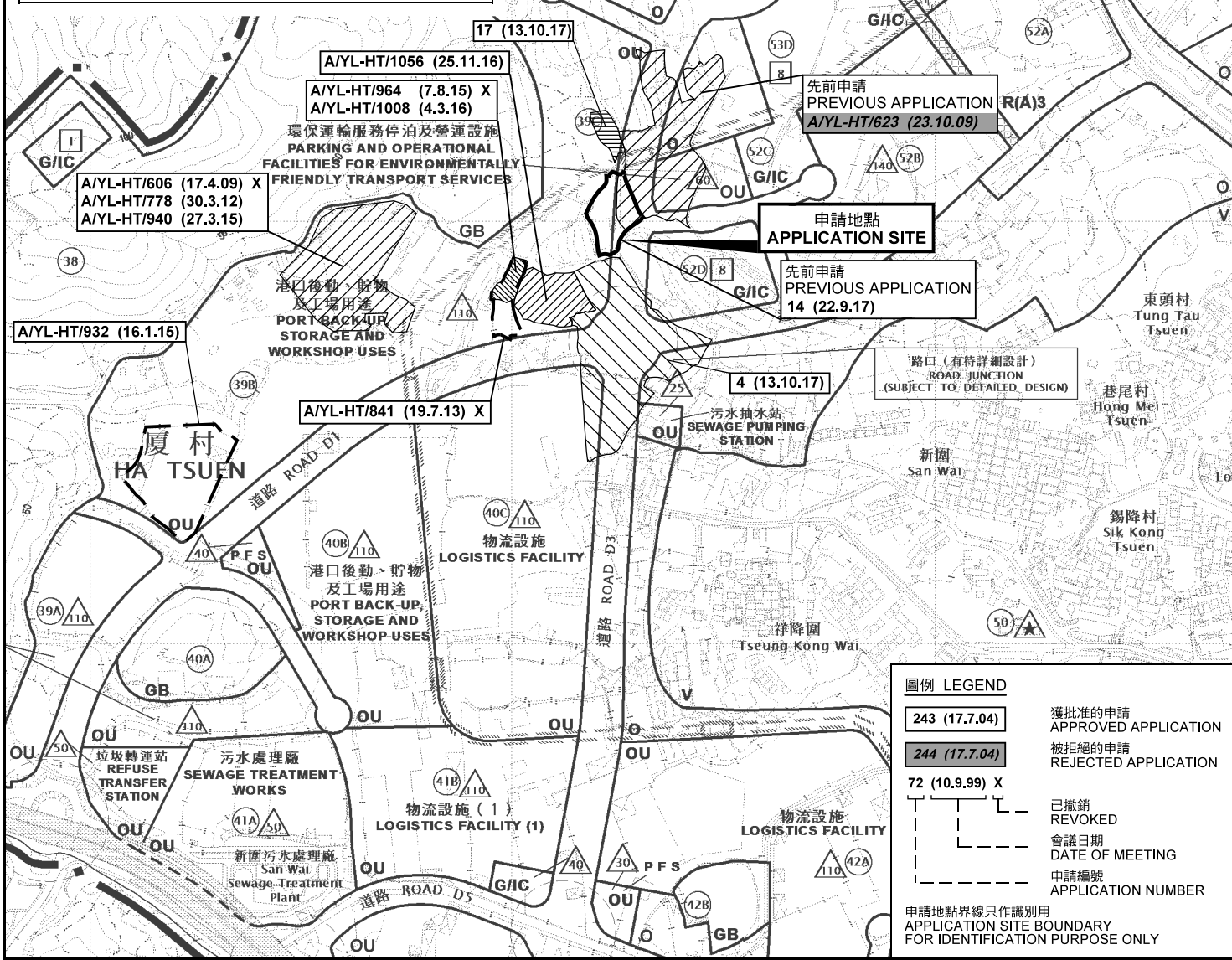
參考編號  
REFERENCE No.  
A/HSK/57

繪圖 DRAWING  
A-3



要覽圖 KEY PLAN

SCALE 1 : 50 000 比例尺



位置圖 LOCATION PLAN

擬議臨時貨倉及露天存放建築材料 (為期3年)  
元朗厦村鳳降村丈量約份第125約  
地段第192號A分段、第192號B分段及第193號  
PROPOSED TEMPORARY WAREHOUSE AND OPEN STORAGE  
OF CONSTRUCTION MATERIALS FOR A PERIOD OF 3 YEARS  
LOTS 192 S.A, 192 S.B AND 193 IN D.D.125,  
FUNG KONG TSUEN, HA TSUEN, YUEN LONG

SCALE 1 : 7 500 比例尺  
米 100 0 100 200 300 米  
METRES

本摘要圖於2018年3月27日擬備，  
所根據的資料為於2017年5月26日  
展示的分區計劃大綱圖編號 S/HSK/1  
EXTRACT PLAN PREPARED ON 27.3.2018  
BASED ON OUTLINE ZONING PLAN No.  
S/HSK/1 EXHIBITED ON 26.5.2017

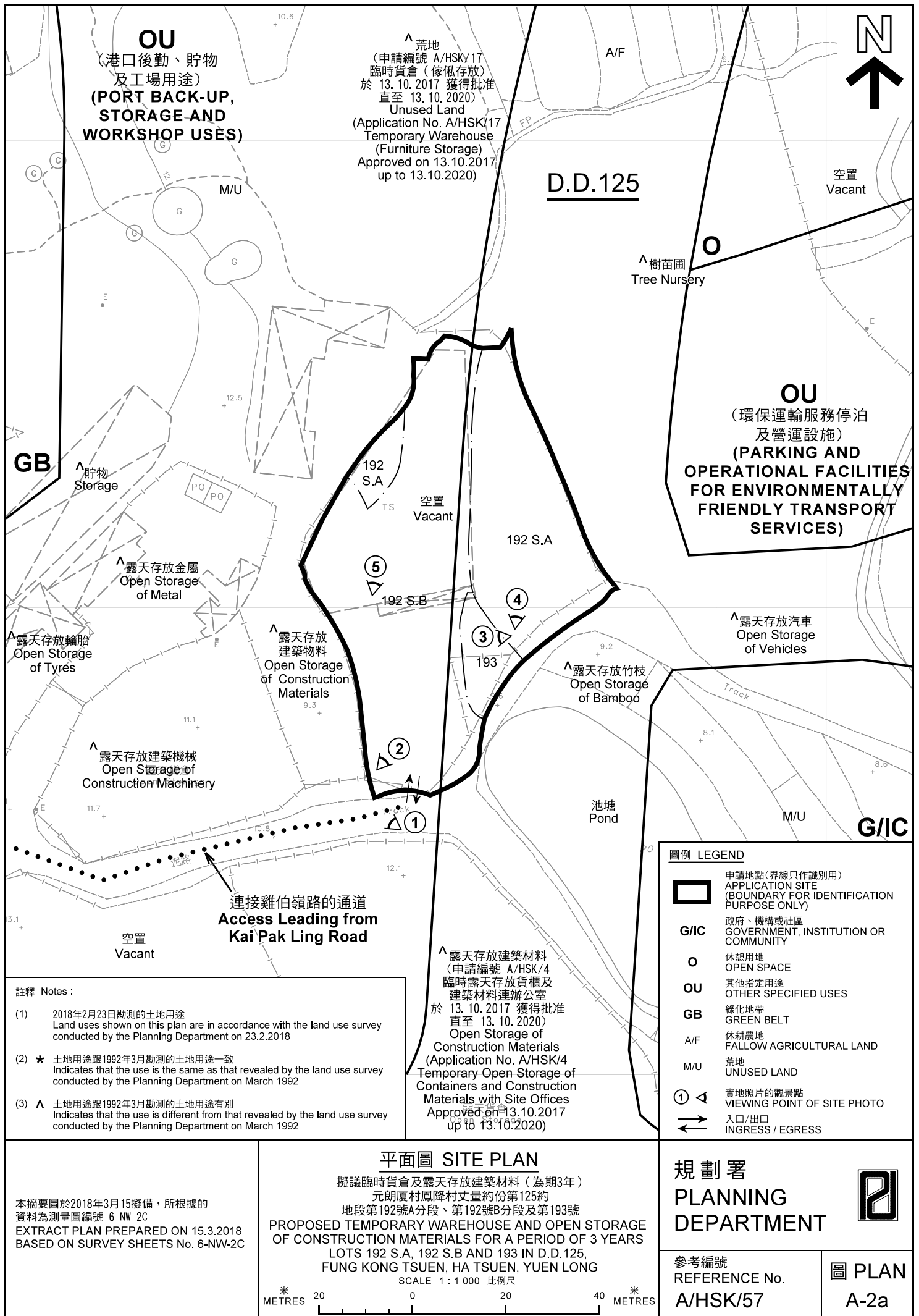
| 圖例 LEGEND   |   |
|---|---|
|   | 243 (17.7.04)<br>獲批准的申請<br>APPROVED APPLICATION |
|   | 244 (17.7.04)<br>被拒絕的申請<br>REJECTED APPLICATION |
|   | 72 (10.9.99) X<br>已撤銷<br>REVOKED                |
|   | 會議日期<br>DATE OF MEETING                         |
|   | 申請編號<br>APPLICATION NUMBER                      |
| 申請地點界線只作識別用<br>APPLICATION SITE BOUNDARY<br>FOR IDENTIFICATION PURPOSE ONLY |   |

規劃署  
PLANNING  
DEPARTMENT



參考編號  
REFERENCE No.  
A/HSK/57

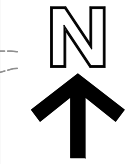
圖 PLAN  
A-1



**OU**  
 (港口後勤、貯物  
 及工場用途)  
**(PORT BACK-UP,  
 STORAGE AND  
 WORKSHOP USES)**

^ 荒地  
 (申請編號 A/HSK/17  
 臨時貨倉 (傢俬存放)  
 於 13. 10. 2017 獲得批准  
 直至 13. 10. 2020)  
 Unused Land  
 (Application No. A/HSK/17  
 Temporary Warehouse  
 (Furniture Storage)  
 Approved on 13.10.2017  
 up to 13.10.2020)

**D.D.125**



空置  
 Vacant

^ 樹苗圃  
 Tree Nursery

**OU**  
 (環保運輸服務停泊  
 及營運設施)  
**(PARKING AND  
 OPERATIONAL FACILITIES  
 FOR ENVIRONMENTALLY  
 FRIENDLY TRANSPORT  
 SERVICES)**

**GB**

貯物  
 Storage

空置  
 Vacant

192 S.A

5

192 S.B

4

3

193

2

1

^ 露天存放汽車  
 Open Storage  
 of Vehicles

^ 露天存放輪胎  
 Open Storage  
 of Tyres

^ 露天存放金屬  
 Open Storage  
 of Metal

^ 露天存放  
 建築物料  
 Open Storage  
 of Construction  
 Materials

^ 露天存放竹枝  
 Open Storage  
 of Bamboo

^ 露天存放建築機械  
 Open Storage  
 of Construction Machinery

池塘  
 Pond

**G/C**

連接雞伯嶺路的通道  
**Access Leading from  
 Kai Pak Ling Road**

空置  
 Vacant

^ 露天存放建築材料  
 (申請編號 A/HSK/4  
 臨時露天存放貨櫃及  
 建築材料連辦公室  
 於 13. 10. 2017 獲得批准  
 直至 13. 10. 2020)  
 Open Storage of  
 Construction Materials  
 (Application No. A/HSK/4  
 Temporary Open Storage of  
 Containers and Construction  
 Materials with Site Offices  
 Approved on 13.10.2017  
 up to 13.10.2020)

註釋 Notes :

- (1) 2018年2月23日勘測的土地用途  
 Land uses shown on this plan are in accordance with the land use survey conducted by the Planning Department on 23.2.2018
- (2) \* 土地用途跟1992年3月勘測的土地用途一致  
 Indicates that the use is the same as that revealed by the land use survey conducted by the Planning Department on March 1992
- (3) ^ 土地用途跟1992年3月勘測的土地用途有別  
 Indicates that the use is different from that revealed by the land use survey conducted by the Planning Department on March 1992

圖例 LEGEND



申請地點(界線只作識別用)  
 APPLICATION SITE  
 (BOUNDARY FOR IDENTIFICATION  
 PURPOSE ONLY)

**G/C**

政府、機構或社區  
 GOVERNMENT, INSTITUTION OR  
 COMMUNITY

O

休憩用地  
 OPEN SPACE

**OU**

其他指定用途  
 OTHER SPECIFIED USES

**GB**

綠化地帶  
 GREEN BELT

A/F

休耕農地  
 FALLOW AGRICULTURAL LAND

M/U

荒地  
 UNUSED LAND

①

實地照片的觀景點  
 VIEWING POINT OF SITE PHOTO

↔

入口/出口  
 INGRESS / EGRESS

平面圖 SITE PLAN

擬議臨時貨倉及露天存放建築材料 (為期3年)  
 元朗厦村鳳降村丈量約份第125約  
 地段第192號A分段、第192號B分段及第193號  
**PROPOSED TEMPORARY WAREHOUSE AND OPEN STORAGE  
 OF CONSTRUCTION MATERIALS FOR A PERIOD OF 3 YEARS**  
 LOTS 192 S.A, 192 S.B AND 193 IN D.D.125,  
 FUNG KONG TSUEN, HA TSUEN, YUEN LONG  
 SCALE 1 : 1 000 比例尺

米 20 0 20 40 米  
 METRES

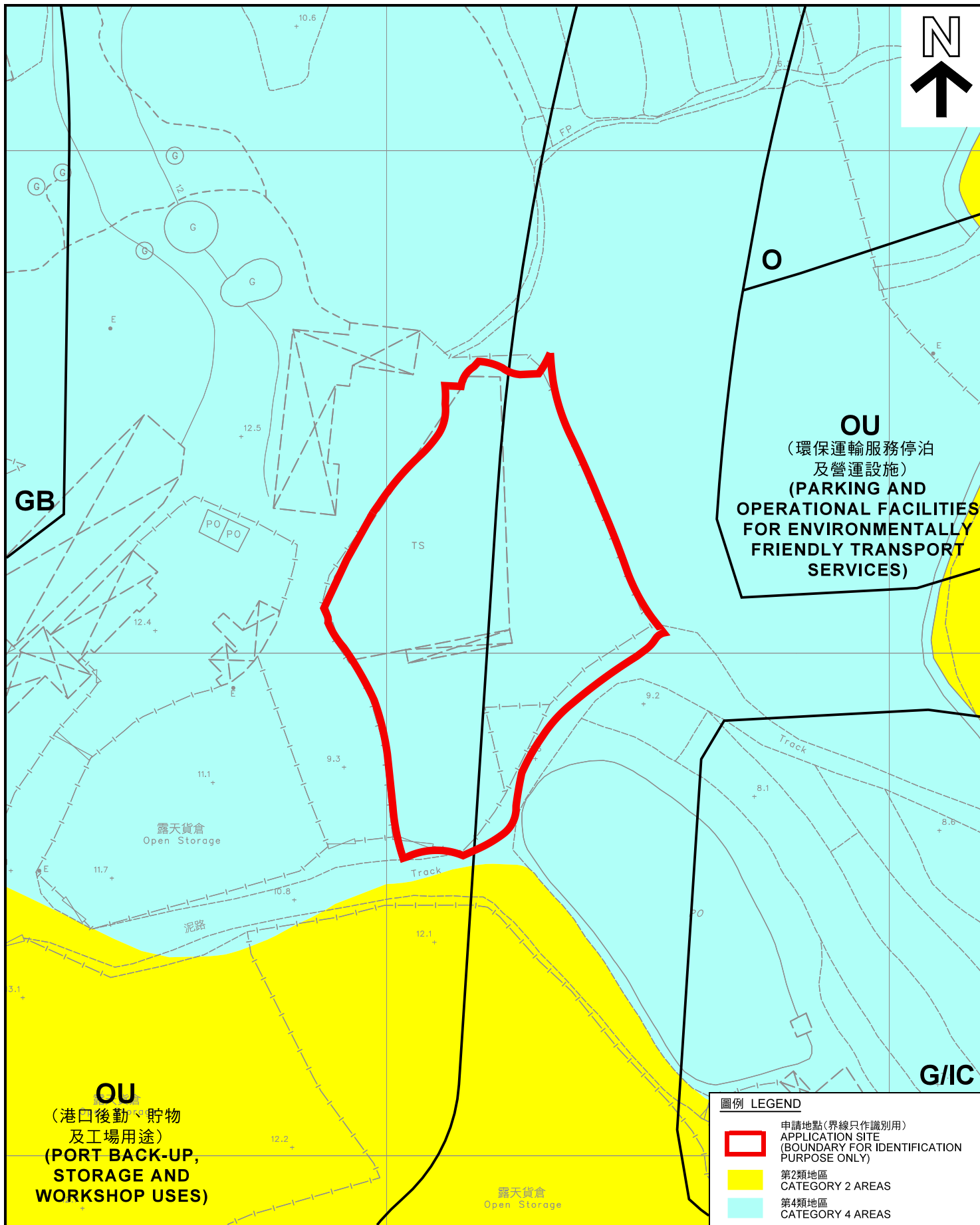
規劃署  
**PLANNING  
 DEPARTMENT**



參考編號  
 REFERENCE No.  
**A/HSK/57**

圖 PLAN  
**A-2a**

本摘要圖於2018年3月15擬備，所根據的  
 資料為測量圖編號 6-NW-2C  
 EXTRACT PLAN PREPARED ON 15.3.2018  
 BASED ON SURVEY SHEETS No. 6-NW-2C



**圖例 LEGEND**

-  申請地點(界線只作識別用)  
APPLICATION SITE  
(BOUNDARY FOR IDENTIFICATION  
PURPOSE ONLY)
-  第2類地區  
CATEGORY 2 AREAS
-  第4類地區  
CATEGORY 4 AREAS

本摘要圖於2018年3月28日擬備，所根據的資料為測量圖編號 6-NW-2C  
EXTRACT PLAN PREPARED ON 28.3.2018  
BASED ON SURVEY SHEETS No. 6-NW-2C

**平面圖 SITE PLAN**

擬議臨時貨倉及露天存放建築材料 (為期3年)  
元朗厦村鳳降村丈量約份第125約  
地段第192號A分段、第192號B分段及第193號  
PROPOSED TEMPORARY WAREHOUSE AND OPEN STORAGE  
OF CONSTRUCTION MATERIALS FOR A PERIOD OF 3 YEARS  
LOTS 192 S.A, 192 S.B AND 193 IN D.D.125,  
FUNG KONG TSUEN, HA TSUEN, YUEN LONG  
SCALE 1 : 1 000 比例尺

米 METRES 20 0 20 40 米 METRES

**規劃署  
PLANNING  
DEPARTMENT**



參考編號  
REFERENCE No.  
**A/HSK/57**

圖 PLAN  
**A-2b**

鳳降村  
Fung Kong  
Tsuen



雞伯嶺路  
KAI PAK LING ROAD

連接雞伯嶺路的通道  
Access Leading from  
Kai Pak Ling Road

圖例 LEGEND



申請地點(界線只作識別用)  
APPLICATION SITE  
(BOUNDARY FOR IDENTIFICATION  
PURPOSE ONLY)

本摘要圖於2018年3月15日擬備，所根據的資料為地政總署於2017年4月4日拍得的航攝照片編號 E020075C  
EXTRACT PLAN PREPARED ON 15.3.2018  
BASED ON AERIAL PHOTO No.  
E020075C TAKEN ON 4.4.2017  
BY LANDS DEPARTMENT

航攝照片 AERIAL PHOTO

擬議臨時貨倉及露天存放建築材料(為期3年)  
元朗厦村鳳降村丈量約份第125約  
地段第192號A分段、第192號B分段及第193號  
PROPOSED TEMPORARY WAREHOUSE AND OPEN STORAGE  
OF CONSTRUCTION MATERIALS FOR A PERIOD OF 3 YEARS  
LOTS 192 S.A, 192 S.B AND 193 IN D.D. 125,  
FUNG KONG TSUEN, HA TSUEN, YUEN LONG

規劃署  
PLANNING  
DEPARTMENT



參考編號  
REFERENCE No.  
A/HSK/57

圖 PLAN  
A-3

申請地點  
APPLICATION SITE



實地照片 SITE PHOTOS

擬議臨時貨倉及露天存放建築材料（為期3年）  
元朗厦村鳳降村丈量約份第125約  
地段第192號A分段、第192號B分段及第193號  
PROPOSED TEMPORARY WAREHOUSE AND OPEN STORAGE  
OF CONSTRUCTION MATERIALS FOR A PERIOD OF 3 YEARS  
LOTS 192 S.A, 192 S.B AND 193 IN D.D.125,  
FUNG KONG TSUEN, HA TSUEN, YUEN LONG

規劃署  
PLANNING  
DEPARTMENT



參考編號  
REFERENCE No.  
A/HSK/57

圖 PLAN  
A-4a

本圖於2018年3月15日擬備，所根據的資料為攝於2018年2月23日的實地照片  
PLAN PREPARED ON 15.3.2018  
BASED ON SITE PHOTOS  
TAKEN ON 23.2.2018



4



申請地點  
APPLICATION SITE

5



申請地點  
APPLICATION SITE

本圖於2018年3月15日擬備，所根據的資料為攝於2018年2月23日的實地照片  
PLAN PREPARED ON 15.3.2018  
BASED ON SITE PHOTOS  
TAKEN ON 23.2.2018

**實地照片 SITE PHOTOS**

擬議臨時貨倉及露天存放建築材料（為期3年）  
元朗厦村鳳降村丈量約份第125約  
地段第192號A分段、第192號B分段及第193號  
PROPOSED TEMPORARY WAREHOUSE AND OPEN STORAGE  
OF CONSTRUCTION MATERIALS FOR A PERIOD OF 3 YEARS  
LOTS 192 S.A, 192 S.B AND 193 IN D.D.125,  
FUNG KONG TSUEN, HA TSUEN, YUEN LONG

規劃署  
PLANNING  
DEPARTMENT



參考編號  
REFERENCE No.  
A/HSK/57

圖 PLAN  
A-4b