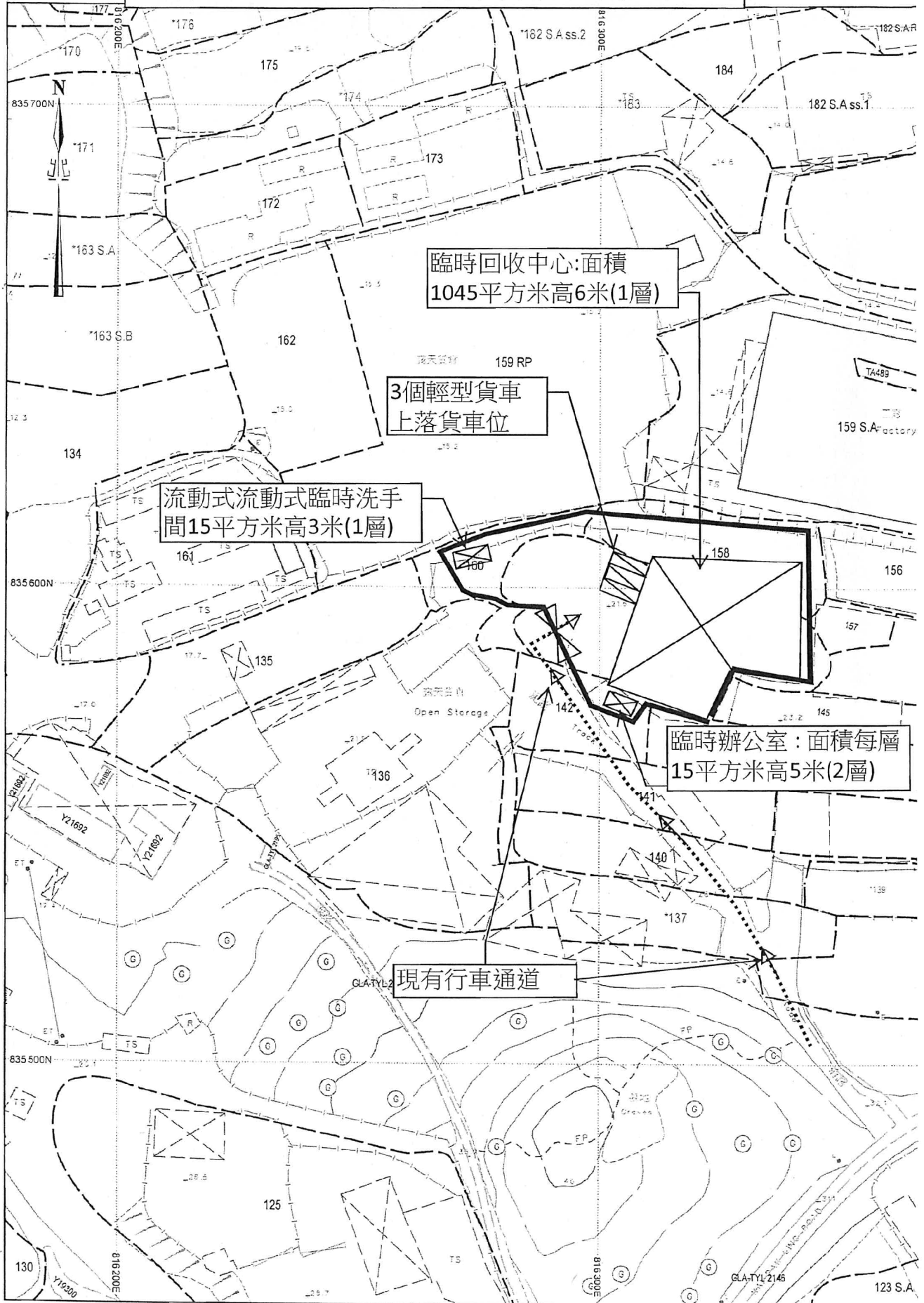


# 臨時成衣，布匹及廢紙回收中心



臨時回收中心:面積  
1045平方米高6米(1層)

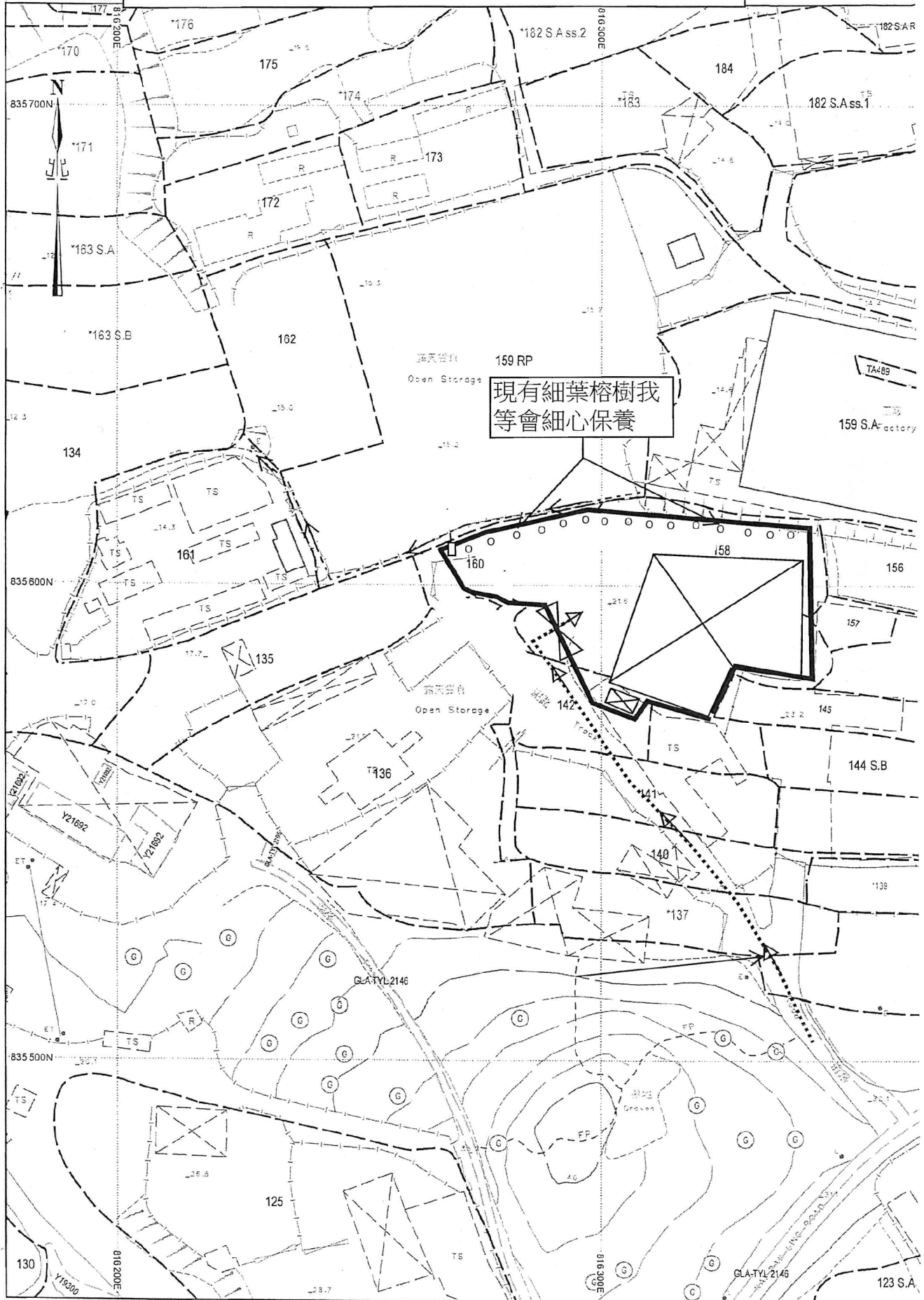
3個輕型貨車  
上落貨車位

流動式流動式臨時洗手  
間15平方米高3米(1層)

臨時辦公室:面積每層  
15平方米高5米(2層)

現有行車通道

# 美化環境建議圖



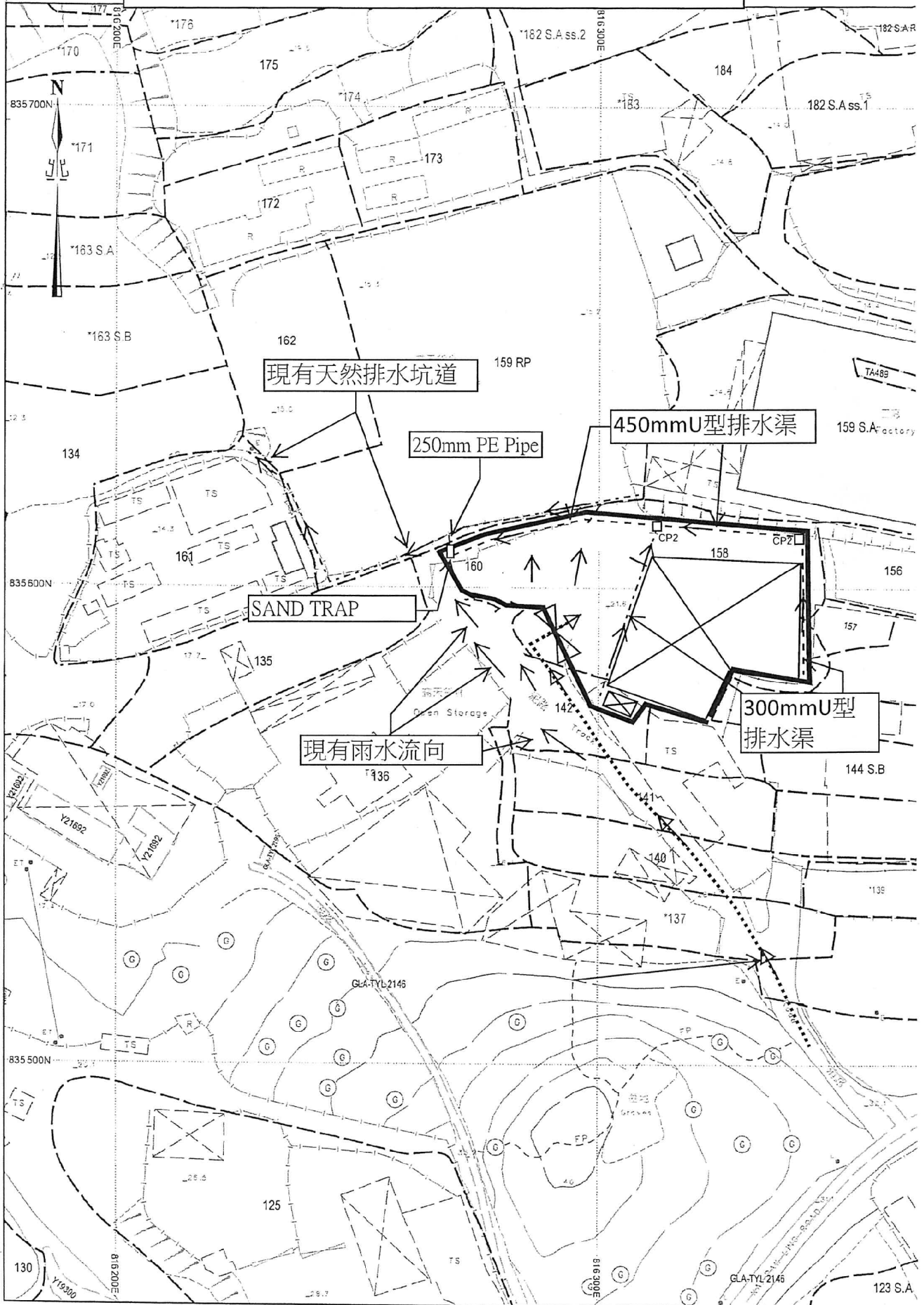
現有細葉榕樹我等會細心保養

SMO-P02 20170901135125 10

(摘錄自申請人於 17. 7. 2020 呈交的申請書)  
(Extract from Applicant's Submission of 17.7.2020)

參考編號 REFERENCE No. AYL-HTF/1107	繪圖 DRAWING A-2
---------------------------------------	-------------------

# 雨水排放建議



SMO-P02

20170901135125 10

(摘錄自申請人於 17. 7. 2020 呈交的申請書)  
 (Extract from Applicant's  
 Submission of 17.7.2020)

參考編號  
 REFERENCE No.  
 AYL-HTF/1107

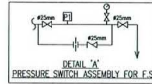
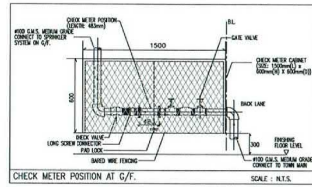
繪圖 DRAWING  
 A-3

F.S. NOTES

- DIRECT CONNECTION TO THE WATER TOWN MAINS. THE SPRINKLER SYSTEM SHALL BE DESIGNED TO CONFORM TO THE RULES OF LPC FOR AUTOMATIC SPRINKLER INSTALLATION AND CONNECTED TO THE TSSC OF FSD BY DIRECT TELEPHONE LINE. THE HAZARD GROUP IS ORDINARY HAZARD GROUP 1.
- ALL PIPES SHALL COMPLY WITH BS 1387 MEDIUM GRADE GALVANIZED MILD STEEL PIPE. C/W.S. PIPE AS BS1387 MEDIUM GRADE.
- A MANUAL FIRE ALARM (MFA) SYSTEM IN ACCORDANCE WITH PARAGRAPHS 5.11 AND 5.14(3)(D) OF THE CODE OF PRACTICE FOR MINIMUM FIRE SERVICE INSTALLATIONS AND EQUIPMENT 1994 VERSION SHALL BE PROVIDED FOR THE BUILDING. ONE MANUAL FIRE ALARM CALL POINT AND ONE FIRE ALARM BELL SHALL BE PROVIDED ADJACENT TO EVERY HOSE REEL IN THE BUILDING SO THAT UPON ACTUATION OF ANY MANUAL FIRE ALARM CALL POINT IN THE BUILDING, THE FIXED FIRE PUMP SHALL COME INTO OPERATION. REGARDLESS OF THE ZONING OF THE MFA CALL POINT.
- THE LIMIT OF DIAMETER FOR ALL FIREHOSES SHALL BE 100mm.
- FIRE RESISTING CABLE TO BS5837 CAT. CWZ SHALL BE USED FOR NEW FIRE ALARM BELL.
- HOSE REEL SYSTEM IN ACCORDANCE WITH PARAGRAPH 5.14 OF THE CODE OF PRACTICE FOR MINIMUM FIRE SERVICE INSTALLATIONS AND EQUIPMENT 1994 VERSION SHALL BE PROVIDED FOR THE BUILDING TO ENSURE THAT EVERY PART OF THE BUILDING CAN BE REACHED BY A LENGTH OF NOT MORE THAN 30M OF FIRE SERVICE HOSE OR HOSE REEL TRUCK.
- ALL SPRINKLER PIPE SIZE SHALL BE #32 UNLESS OTHERWISE SPECIFIED.

# A/ YL-HTF/1107 消防系統建議圖

REMARK : ALL SPRINKLER PIPE SIZE SHALL BE #32 UNLESS OTHERWISE SPECIFIED.



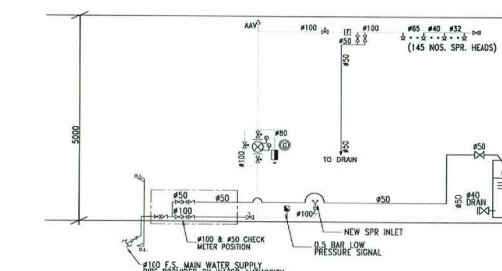
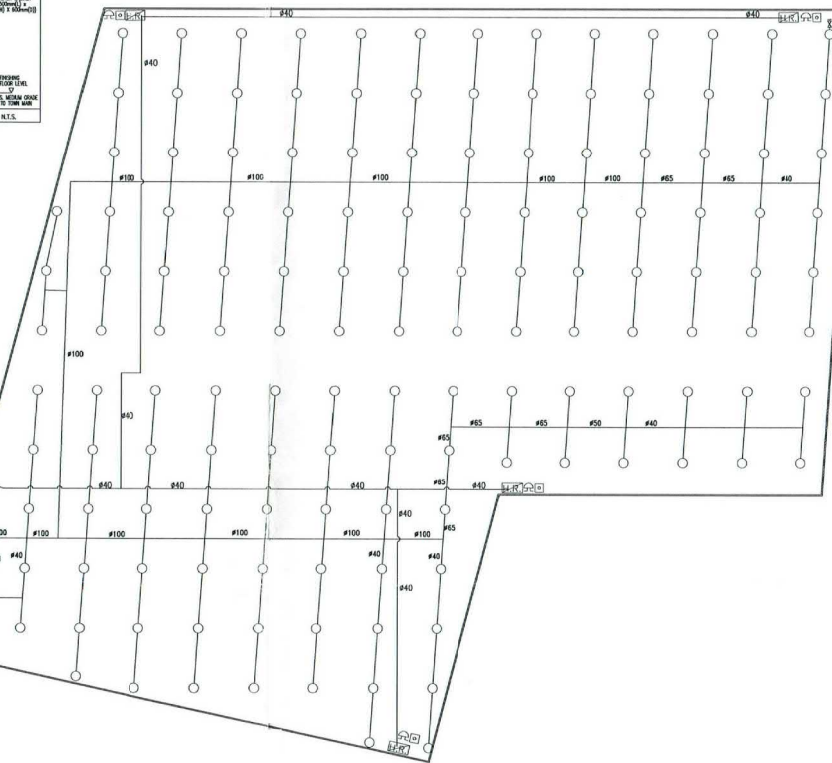
LEGEND:

- ⊙ TEST FIRE SERVICE PUMP SET WITH MOTOR
- ⊕ CHECK METER POSITION
- ⊖ CHECK VALVE
- ⊗ GATE VALVE
- ⊘ AUTO-RETRIEVAL VALVE C/W ELECTRICAL MONITORING
- ⊙ FS CONTROL PANEL
- ⊕ AUTOMATIC AIR VENT
- ⊖ FLOUGHING VALVE WITH BRASS CAP
- ⊗ NEW INSULATED FIREWORK / EQUIPMENT / CABLE
- ⊘ FIRE SPRINKLER HEAD UNDER FLOOR SLAB
- ⊙ MANUAL FIRE ALARM CALL POINT (BROOK CLASS UNIT TYPE)
- ⊖ FIRE ALARM BELL
- ⊗ HOSE REEL SET WITH 30m 100mm RUBBER HOSE, 10mm BRONZE NOZZLE, P.A. DISCHARGE HOSE, ROLL, OPERATOR INSTRUCTION PLATE
- ⊘ DIRECT TELEPHONE LINE
- ⊙ FLOW SWITCH
- ⊖ SPRINKLER INLET / F.S. INLET
- ⊗ STOP VALVE C/W BRASS CAP
- ⊘ SPRINKLER CONTROL VALVE
- ⊙ WATER ALARM CONC
- ⊖ NEW SECONDARY VALVE C/W ELECTRICAL MONITORING
- ⊗ STOP VALVE FOR SPR CONTROL VALVE
- ⊘ SGT C/W ELECTRICAL MONITORING
- ⊙ PROVIDING PIPE SHALL BE PROVIDED WITH PERMANENT TESTING AND DRAINAGE FACILITIES C/W FLOW METER AND ORIFICE PLATE
- ⊖ LEVEL FLOW SWITCH
- ⊗ BALL VALVE
- ⊘ FS PUMP CONTROL PANEL

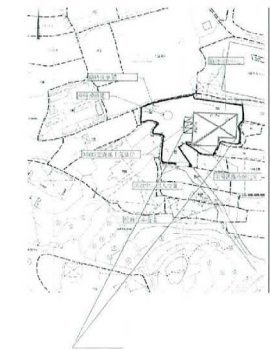
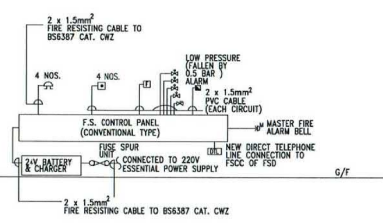
ABBREVIATION :

- F.S. FIRE SERVICE
- H/L HIGH LEVEL
- L/L LOW LEVEL
- T/A TO ABOVE
- T/B TO BELOW
- FP FIXED FIRE PUMP
- T/A FROM ABOVE
- T/B FROM BELOW
- B.L. BOUNDARY LINE
- H.R. HOSE REEL
- A.A.V. AUTOMATIC AIR VENT
- F/S FIRE SWITCH
- D/L EXISTING
- MFA MANUAL FIRE ALARM
- FR FIRE RESISTING
- A.A. AUTOMATIC FIRE ALARM
- D/L DIRECT TELEPHONE LINE
- SPR SPRINKLER
- U/P SUPPLY PUMP
- F.H. FIRE HYDRANT
- C/W COMPLETED WITH

FIXED FIRE PUMP SETS (ONE DUTY & ONE STANDBY) (FP1 & FP2)  
 NON-COMBUSTIBLE / FIRE RESISTANT MATERIAL TYPE ENCLOSURE FOR FIXED FIRE PUMP  
 500 LITER EFFECTIVE STORAGE CAPACITY FRESHGLASS FS WATER TANK  
 95mm O.F. PIPE  
 SPRINKLER INLET  
 SPRINKLER CONTROL VALVE  
 #100 CHECK METER POSITION FOR SPRINKLER SYSTEM & #50 CHECK METER POSITION FOR HOSE REEL SYSTEM C/W METAL WIRE MESH CHECK METER CABINET F/W LOCK  
 #100 F.S. WATER SUPPLY PIPE CONNECTED FROM TOWN MAINS



SCHEMATIC PIPING DIAGRAM FOR HOSE REEL SYSTEMS



COLOUR CODE FOR PIPE SIZES

PIPE SIZE	CLOUR CODE
#25mm	GREEN
#40mm	RED
#50mm	PURPLE
#65mm	YELLOW
#80mm	LIGHT BLUE
#100mm	DARK GREEN
#120mm	LIGHT BROWN

REV.	DESCRIPTION	DATE	BY
A	GENERAL REVISION	02/04/19	KANT

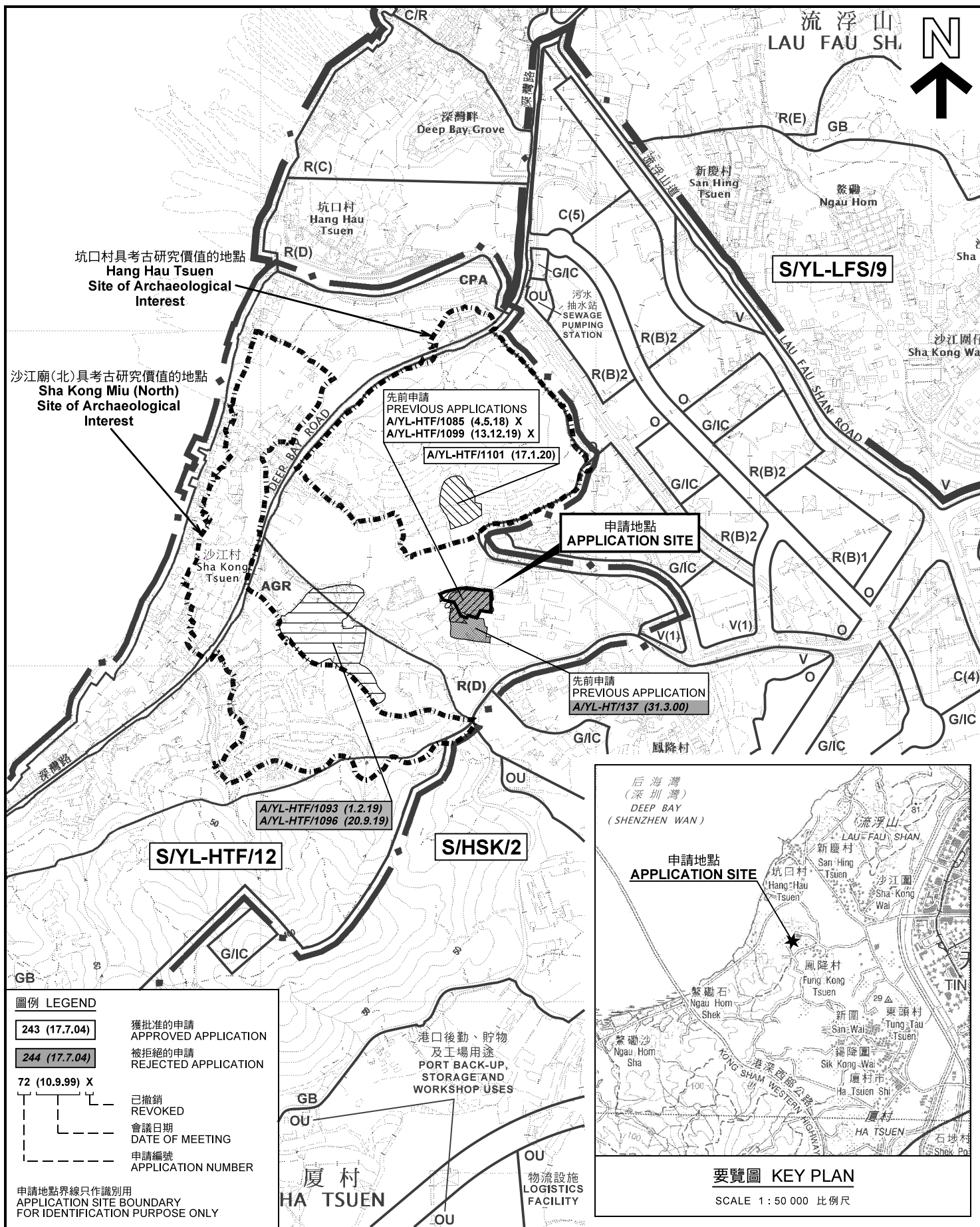
PROJECT :  
 元朗厦村第128約地段  
 第142號部分、第143號部分、  
 第158號部分及第160號部分

TITLE :  
 F.S. LAYOUT PLAN FOR  
 GROUND FLOOR

DRAWN BY :	KANT
CHECKED BY :	
DRAWING NO. :	NHM-FS-001
F.S.D. REF. NO. :	
DATE :	22-06-2020
SCALE :	1:100

(摘錄自申請人於 25. 8. 2020 呈交的進一步資料)  
 (Extract from Applicant's Further  
 Information Submitted on 25.8.2020)

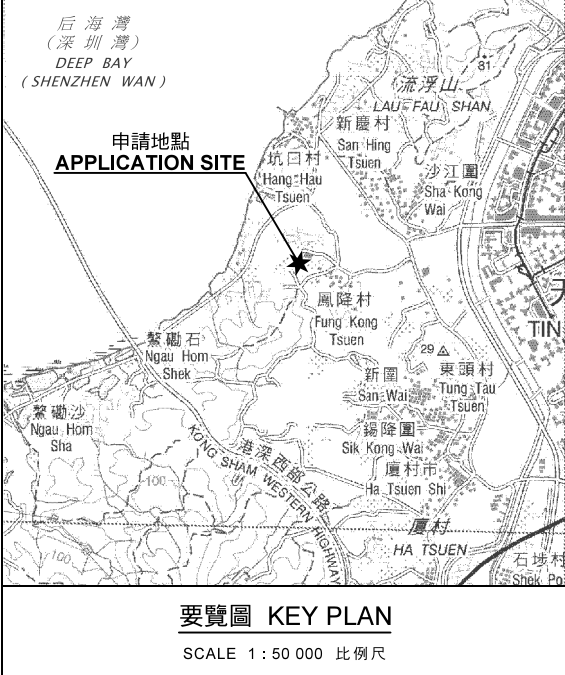
參考編號 REFERENCE No. A/YL-HTF/1107	繪圖 DRAWING A-4
--	-------------------



**圖例 LEGEND**

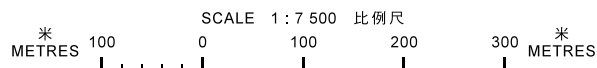
- 243 (17.7.04) 獲批准的申請  
APPROVED APPLICATION
- 244 (17.7.04) 被拒絕的申請  
REJECTED APPLICATION
- 72 (10.9.99) X 已撤銷  
REVOKED
- 會議日期  
DATE OF MEETING
- 申請編號  
APPLICATION NUMBER

申請地點界線只作識別用  
APPLICATION SITE BOUNDARY  
FOR IDENTIFICATION PURPOSE ONLY



**位置圖 LOCATION PLAN**

臨時成衣、布匹及廢紙回收中心(為期3年)  
新界元朗厦村鳳降村丈量約份第128約地段第142號(部分)、  
第143號(部分)、第158號(部分)及第160號(部分)  
TEMPORARY RECYCLABLE COLLECTION CENTRE FOR GARMENT,  
CLOTH AND WASTE PAPER FOR A PERIOD OF 3 YEARS  
LOTS 142 (PART), 143 (PART), 158 (PART) AND 160 (PART) IN D.D.128,  
FUNG KONG TSUEN, HA TSUEN, YUEN LONG, NEW TERRITORIES



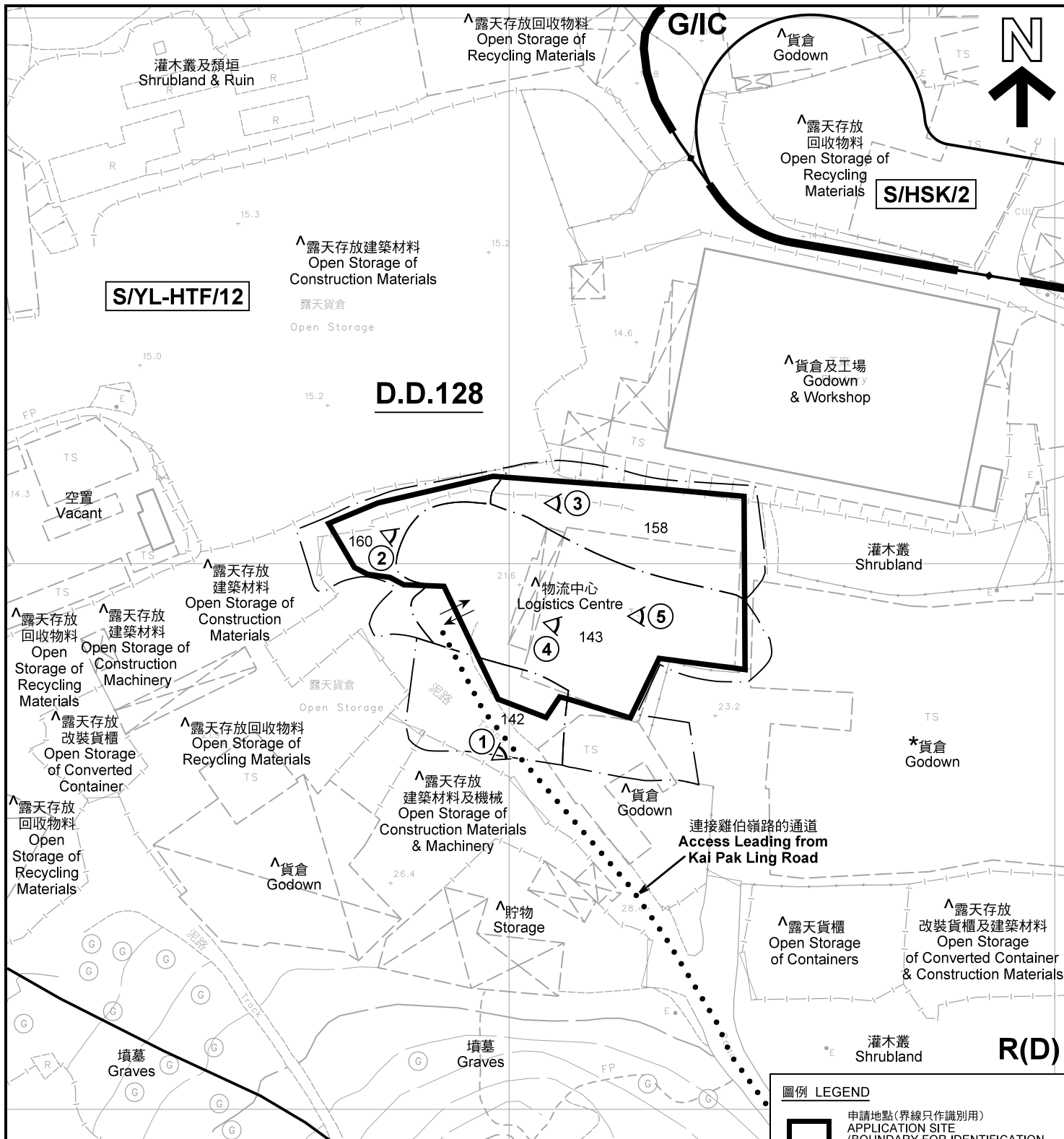
**規劃署  
PLANNING  
DEPARTMENT**



參考編號  
REFERENCE No.  
A/YL-HTF/1107

圖 PLAN  
A-1

本摘要圖於2020年8月31日擬備，  
所根據的資料為於2018年10月16日  
核准的分區計劃大綱圖編號 S/YL-HTF/12  
EXTRACT PLAN PREPARED ON 31.8.2020  
BASED ON OUTLINE ZONING PLAN No.  
S/YL-HTF/12 APPROVED ON 16.10.2018



S/YL-HTF/12

D.D.128

S/H/SK/2



- 註釋 Notes :
- (1) 2020年8月28日勘測的土地用途  
Land uses shown on this plan are in accordance with the land use survey conducted by the Planning Department on 28.8.2020
  - (2) \* 土地用途跟1992年3月勘測的土地用途一致  
Indicates that the use is the same as that revealed by the land use survey conducted by the Planning Department in Mar 1992
  - (3) ^ 土地用途跟1992年3月勘測的土地用途有別  
Indicates that the use is different from that revealed by the land use survey conducted by the Planning Department in Mar 1992

圖例 LEGEND

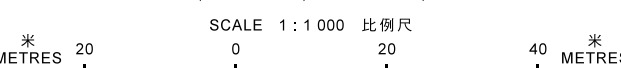
	申請地點(界線只作識別用) APPLICATION SITE (BOUNDARY FOR IDENTIFICATION PURPOSE ONLY)
R(D)	住宅(丁類) RESIDENTIAL (GROUP D)
G/I/C	政府、機構或社區 GOVERNMENT, INSTITUTION OR COMMUNITY
AGR	農業 AGRICULTURE
① <	實地照片的觀景點 VIEWING POINT OF SITE PHOTO
↔	入口/出口 INGRESS / EGRESS

AGR

平面圖 SITE PLAN

臨時成衣、布匹及廢紙回收中心(為期3年)  
新界元朗厦村鳳降村丈量約份第128約地段第142號(部分)、  
第143號(部分)、第158號(部分)及第160號(部分)  
TEMPORARY RECYCLABLE COLLECTION CENTRE FOR GARMENT,  
CLOTH AND WASTE PAPER FOR A PERIOD OF 3 YEARS  
LOTS 142 (PART), 143 (PART), 158 (PART) AND 160 (PART) IN D.D.128,  
FUNG KONG TSUEN, HA TSUEN, YUEN LONG, NEW TERRITORIES

本摘要圖於2020年8月31日擬備，所根據的資料為測量圖編號 6-NW-1B  
EXTRACT PLAN PREPARED ON 31.8.2020  
BASED ON SURVEY SHEET No. 6-NW-1B



規劃署  
PLANNING  
DEPARTMENT



參考編號  
REFERENCE No.  
A/YL-HTF/1107

圖 PLAN  
A-2



圖例 LEGEND



申請地點(界線只作識別用)  
APPLICATION SITE  
(BOUNDARY FOR IDENTIFICATION  
PURPOSE ONLY)

本摘要圖於2020年8月31日擬備，所根據的資料為地政總署於2019年10月18日拍得的航攝照片編號 E072449C  
EXTRACT PLAN PREPARED ON 31.8.2020  
BASED ON AERIAL PHOTO No.  
E072449C TAKEN ON 18.10.2019  
BY LANDS DEPARTMENT

航攝照片 AERIAL PHOTO

臨時成衣、布匹及廢紙回收中心(為期3年)  
新界元朗厦村鳳降村丈量約份第128約地段第142號(部分)、  
第143號(部分)、第158號(部分)及第160號(部分)  
TEMPORARY RECYCLABLE COLLECTION CENTRE FOR GARMENT,  
CLOTH AND WASTE PAPER FOR A PERIOD OF 3 YEARS  
LOTS 142 (PART), 143 (PART), 158 (PART) AND 160 (PART) IN D.D.128,  
FUNG KONG TSUEN, HA TSUEN, YUEN LONG, NEW TERRITORIES

規劃署  
PLANNING  
DEPARTMENT



參考編號  
REFERENCE No.  
A/YL-HTF/1107

圖 PLAN  
A-3

申請地點  
APPLICATION SITE



申請地點  
APPLICATION SITE



申請地點  
APPLICATION SITE



實地照片 SITE PHOTOS

臨時成衣、布匹及廢紙回收中心(為期3年)  
新界元朗厦村鳳降村丈量約份第128約地段第142號(部分)、  
第143號(部分)、第158號(部分)及第160號(部分)  
TEMPORARY RECYCLABLE COLLECTION CENTRE FOR GARMENT,  
CLOTH AND WASTE PAPER FOR A PERIOD OF 3 YEARS  
LOTS 142 (PART), 143 (PART), 158 (PART) AND 160 (PART) IN D.D.128,  
FUNG KONG TSUEN, HA TSUEN, YUEN LONG, NEW TERRITORIES

規劃署  
PLANNING  
DEPARTMENT



參考編號  
REFERENCE No.  
A/YL-HTF/1107

圖 PLAN  
A-4a

本圖於2020年8月31日擬備，所根據的資料為攝於2020年8月28日的實地照片  
PLAN PREPARED ON 31.8.2020  
BASED ON SITE PHOTOS  
TAKEN ON 28.8.2020





**實地照片 SITE PHOTOS**

臨時成衣、布匹及廢紙回收中心(為期3年)  
 新界元朗厦村鳳降村丈量約份第128約地段第142號(部分)、  
 第143號(部分)、第158號(部分)及第160號(部分)  
 TEMPORARY RECYCLABLE COLLECTION CENTRE FOR GARMENT,  
 CLOTH AND WASTE PAPER FOR A PERIOD OF 3 YEARS  
 LOTS 142 (PART), 143 (PART), 158 (PART) AND 160 (PART) IN D.D.128,  
 FUNG KONG TSUEN, HA TSUEN, YUEN LONG, NEW TERRITORIES

規劃署  
**PLANNING  
 DEPARTMENT**



參考編號  
 REFERENCE No.  
**A/YL-HTF/1107**

圖 PLAN  
**A-4b**

本圖於2020年8月31日擬備，所根據的資料為攝於2020年8月28日的實地照片  
 PLAN PREPARED ON 31.8.2020  
 BASED ON SITE PHOTOS  
 TAKEN ON 28.8.2020