

Project 項目名稱:
 Proposed Temporary Logistics Centre with Ancillary Office & Parking of Vehicle for a Period of 3 Years at Lots 1709 (Part), 1710(Part), 1711(Part), 1712(Part), 1713, 1714 (Part), 1715(Part), 1719(Part), 2276S.A(Part), 2277S.A, 2277S.B(Part), 2278, 2279S.A, 2279S.B(Part), 2280 (Part), 2285(Part), 2286, 2287, 2288, 2289, 2291, 2292, 2294, 2295, 2296(Part), 2302(Part), 2305(Part), 2306, 2310, 2311, 2312, 2313, 2314S.A, 2314RP(Part), 2317 (Part), 2318(Part), 2320(Part), 2321, 2322, 2323, 2324, 2325S.A, 2325S.B, 2325RP, 2326(Part), 2327(Part), 2328, 2329, 2344S.A(Part), 2344S.B(Part), 2348, 2349 (Part), 2351(Part), 2352(Part), 2353(Part) & Adjoining Government Land in D.D.129, Lau Fau Shan, Yuen Long, N.T.

Drawing Title 圖名:
Location Plan

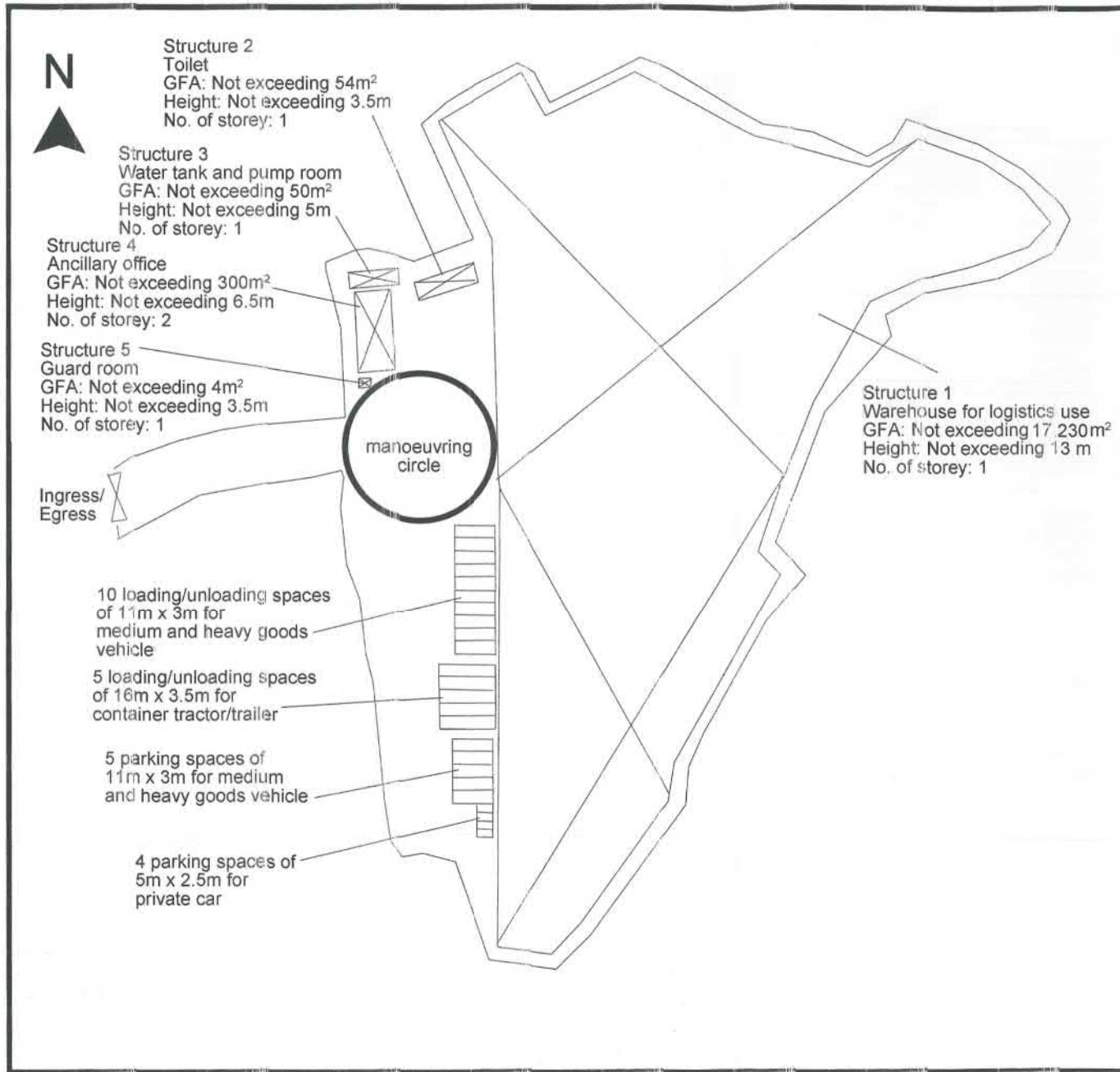
Drawing No. 圖號:
Figure 2

Remarks 備註:
 ●●● Vehicular access leading from Lau Fau Shan Road

Scale 比例:
 1:7500

參考編號 REFERENCE No. A/YL-LFS/353	繪圖 DRAWING A-1
------------------------------------	-------------------

(摘錄自申請人於14.11.2019交的申請書)
 (Extract from Applicant's
 Submission Dated 14.11.2019)



Structure 2
Toilet
GFA: Not exceeding 54m²
Height: Not exceeding 3.5m
No. of storey: 1

Structure 3
Water tank and pump room
GFA: Not exceeding 50m²
Height: Not exceeding 5m
No. of storey: 1

Structure 4
Ancillary office
GFA: Not exceeding 300m²
Height: Not exceeding 6.5m
No. of storey: 2

Structure 5
Guard room
GFA: Not exceeding 4m²
Height: Not exceeding 3.5m
No. of storey: 1

Structure 1
Warehouse for logistics use
GFA: Not exceeding 17,230m²
Height: Not exceeding 13 m
No. of storey: 1

manoeuvring circle

Ingress/
Egress

10 loading/unloading spaces
of 11m x 3m for
medium and heavy goods
vehicle

5 loading/unloading spaces
of 16m x 3.5m for
container tractor/trailer

5 parking spaces of
11m x 3m for medium
and heavy goods vehicle

4 parking spaces of
5m x 2.5m for
private car

Project 項目名稱:
Proposed Temporary Logistics Centre
with Ancillary Office & Parking of
Vehicle for a Period of 3 Years at Lots
1709(Part), 1710(Part), 1711(Part),
1712(Part), 1713, 1714(Part), 1715
(Part), 1719(Part), 2276S.A(Part),
2277S.A, 2277S.B(Part), 2278,
2279S.A, 2279S.B(Part), 2280(Part),
2285(Part), 2286, 2287, 2288, 2289,
2291, 2292, 2294, 2295, 2296(Part),
2302(Part), 2305(Part), 2306, 2310,
2311, 2312, 2313, 2314S.A, 2314RP
(Part), 2317(Part), 2318(Part), 2320
(Part), 2321, 2322, 2323, 2324,
2325S.A, 2325S.B, 2325RP, 2326
(Part), 2327(Part), 2328, 2329,
2344S.A(Part), 2344S.B(Part), 2348,
2349(Part), 2351(Part), 2352(Part),
2353(Part) & Adjoining Government
Land in D.D.129, Lau Fau Shan,
Yuen Long, N.T.

Drawing No. 圖號:
Figure 3

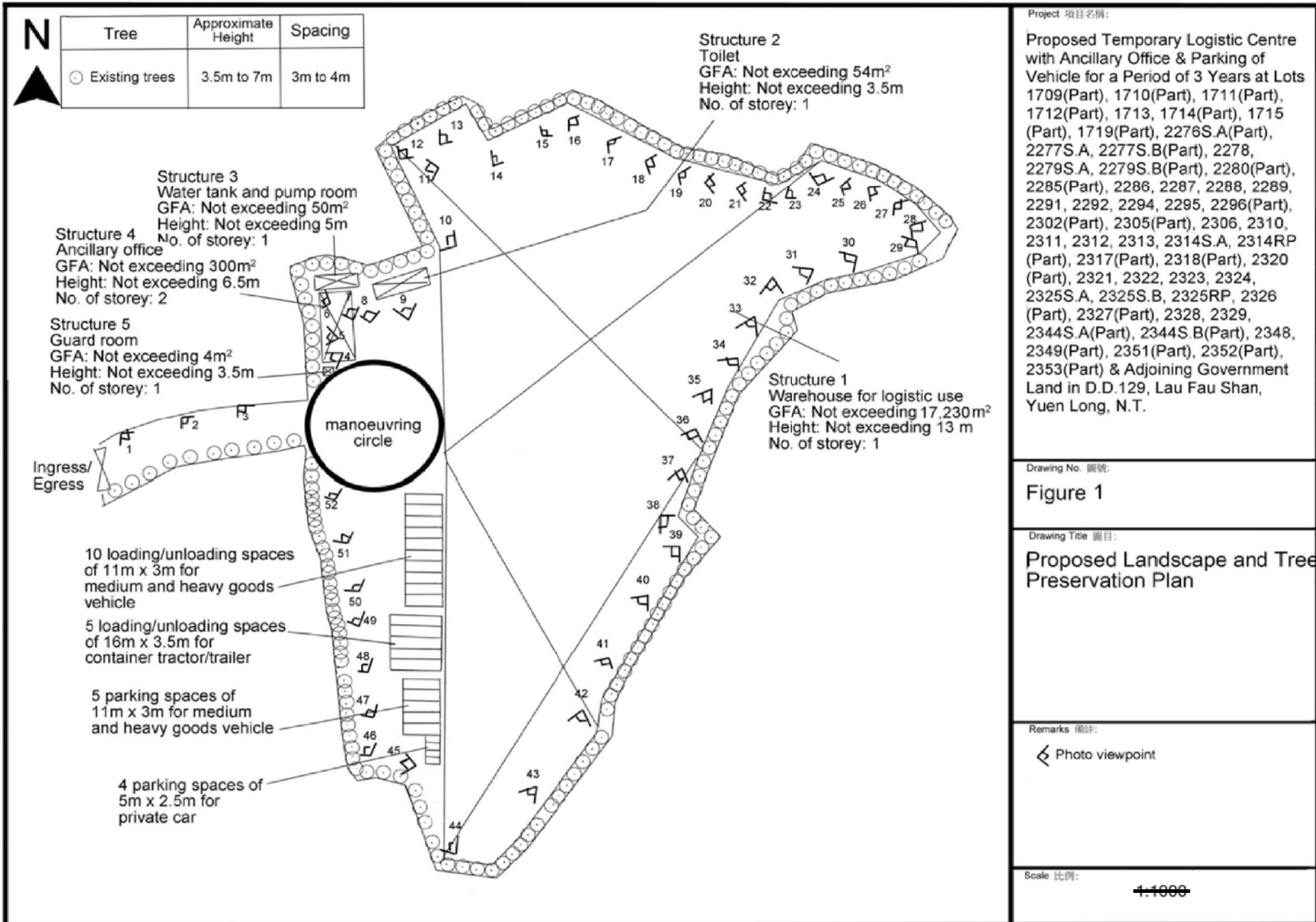
Drawing Title 圖目:
Proposed Layout Plan

Remarks 備註:

Scale 比例:
1:1000

參考編號 REFERENCE No. A/YL-LFS/353	繪圖 DRAWING A-2
---	--------------------------

(摘錄自申請人於14. 11. 2019交的申請書)
(Extract from Applicant's
Submission Dated 14.11.2019)

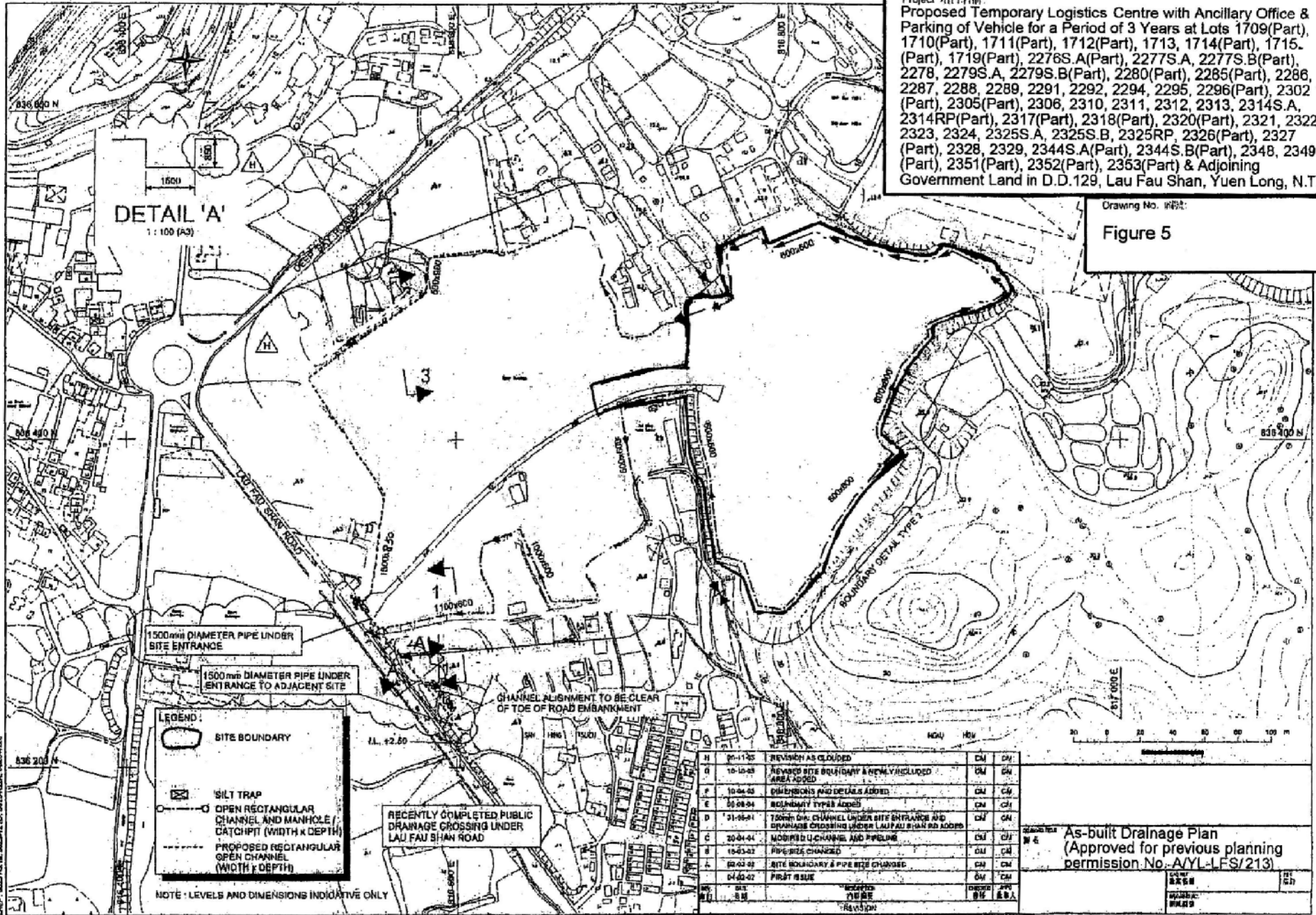


參考編號 REFERENCE No. A/YL-LFS/353	繪圖 DRAWING A-3
------------------------------------	-------------------

(摘錄自申請人於4. 6. 2020交的申請書)
(Extract from Applicant's
Submission Dated 4.6.2020)

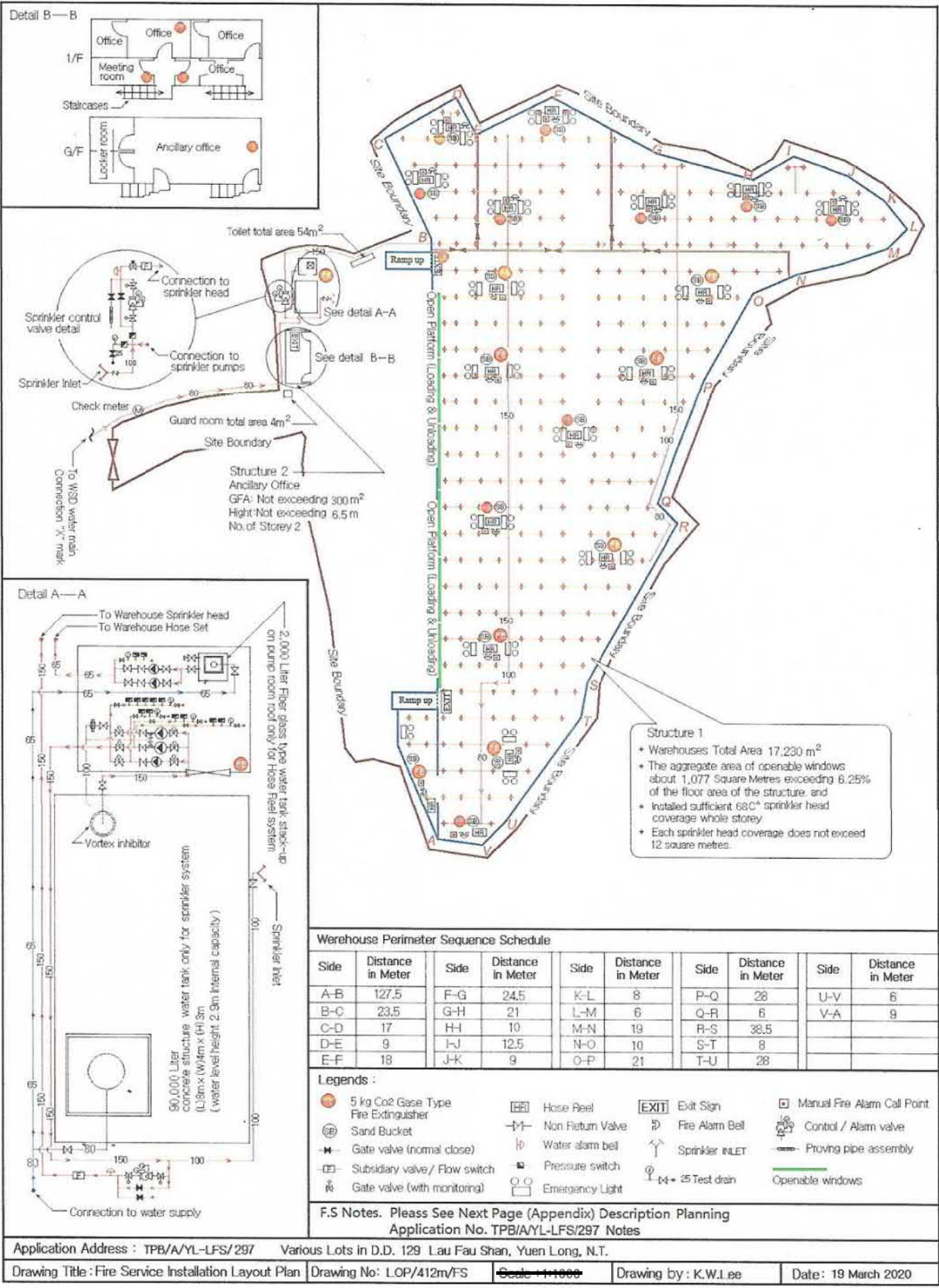
Project 項目名稱
 Proposed Temporary Logistics Centre with Ancillary Office & Parking of Vehicle for a Period of 3 Years at Lots 1709(Part), 1710(Part), 1711(Part), 1712(Part), 1713, 1714(Part), 1715(Part), 1719(Part), 2276S.A(Part), 2277S.A, 2277S.B(Part), 2278, 2279S.A, 2279S.B(Part), 2280(Part), 2285(Part), 2286, 2287, 2288, 2289, 2291, 2292, 2294, 2295, 2296(Part), 2302(Part), 2305(Part), 2306, 2310, 2311, 2312, 2313, 2314S.A, 2314RP(Part), 2317(Part), 2318(Part), 2320(Part), 2321, 2322, 2323, 2324, 2325S.A, 2325S.B, 2325RP, 2326(Part), 2327(Part), 2328, 2329, 2344S.A(Part), 2344S.B(Part), 2348, 2349(Part), 2351(Part), 2352(Part), 2353(Part) & Adjoining Government Land in D.D.129, Lau Fau Shan, Yuen Long, N.T.

Drawing No. 圖號
Figure 5



參考編號 REFERENCE No. 繪圖 DRAWING
 AYL-LFS/353 A-4

(摘錄自申請人於14. 11. 2019交的申請書)
 (Extract from Applicant's
 Submission Dated 14.11.2019)

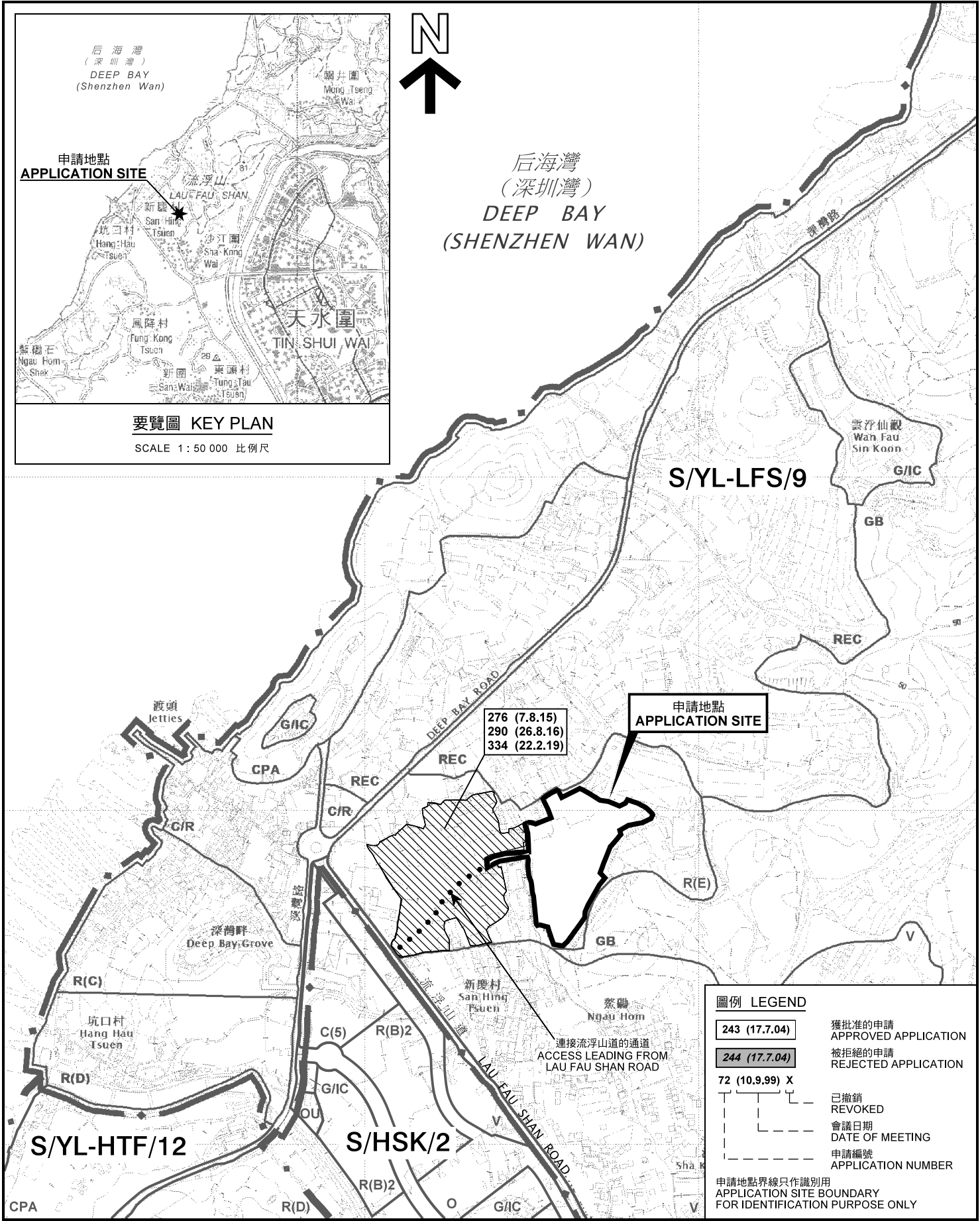


參考編號 REFERENCE No. 繪圖 DRAWING
 A/YL-LFS/353 A-5

(摘錄自申請人於 18. 5. 2020 交的申請書)
 (Extract from Applicant's
 Submission Dated 18.5.2020)



后海灣
(深圳灣)
DEEP BAY
(SHENZHEN WAN)



圖例 LEGEND

243 (17.7.04)	獲批准的申請 APPROVED APPLICATION
244 (17.7.04)	被拒絕的申請 REJECTED APPLICATION
72 (10.9.99) X	已撤銷 REVOKED
---	會議日期 DATE OF MEETING
---	申請編號 APPLICATION NUMBER

申請地點界線只作識別用
APPLICATION SITE BOUNDARY
FOR IDENTIFICATION PURPOSE ONLY

本摘要圖於2020年6月1日擬備，
所根據的資料為於2018年10月16日
核准的分區計劃大綱圖編號 S/YL-LFS/9
EXTRACT PLAN PREPARED ON 1.6.2020
BASED ON OUTLINE ZONING PLAN No.
S/YL-LFS/9 APPROVED ON 16.10.2018

位置圖及同類申請 LOCATION PLAN WITH SIMILAR APPLICATIONS

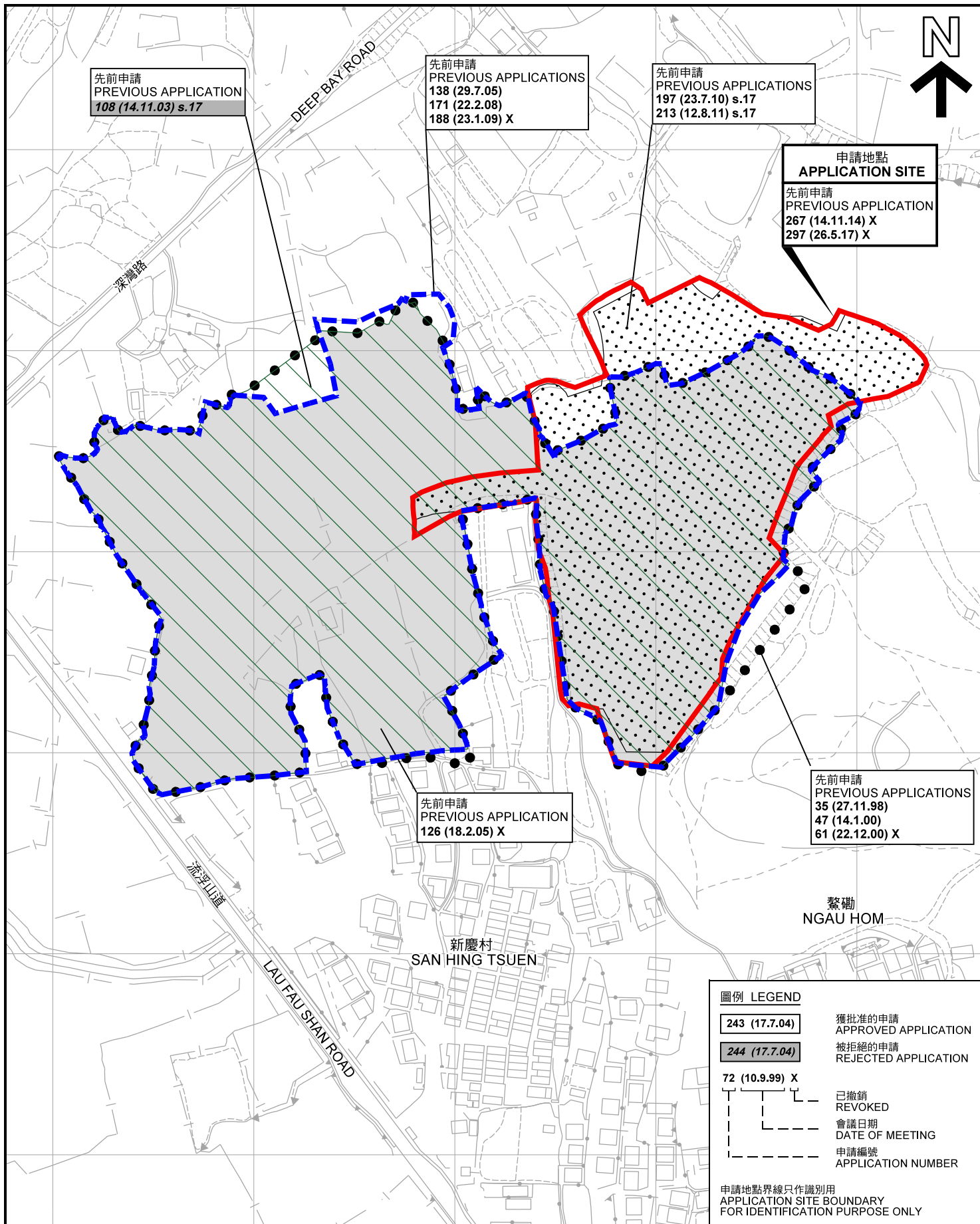
臨時物流中心連附屬辦公室及泊車位(為期3年)
新界元朗流浮山丈量約份第129約多個地段和毗連政府土地
TEMPORARY LOGISTICS CENTRE WITH ANCILLARY OFFICE
AND PARKING OF VEHICLE FOR A PERIOD OF 3 YEARS
VARIOUS LOTS IN D.D. 129 AND ADJOINING GOVERNMENT LAND,
LAU FAU SHAN, YUEN LONG, NEW TERRITORIES

SCALE 1 : 7 500 比例尺

**規劃署
PLANNING
DEPARTMENT**

參考編號
REFERENCE No.
A/YL-LFS/353

圖 PLAN
A-1a



本摘要圖於2020年6月2日擬備，
所根據的資料為測量圖編號
2-SW-21B、21D、22A 及 22C
EXTRACT PLAN PREPARED ON 2.6.2020
BASED ON SURVEY SHEETS No.
2-SW-21B, 21D, 22A & 22C

先申請圖 PREVIOUS APPLICATION PLAN

臨時物流中心連附屬辦公室及泊車位(為期3年)
新界元朗流浮山丈量約份第129約多個地段和毗連政府土地
TEMPORARY LOGISTICS CENTRE WITH ANCILLARY OFFICE
AND PARKING OF VEHICLE FOR A PERIOD OF 3 YEARS
VARIOUS LOTS IN D.D. 129 AND ADJOINING GOVERNMENT LAND,
LAU FAU SHAN, YUEN LONG, NEW TERRITORIES

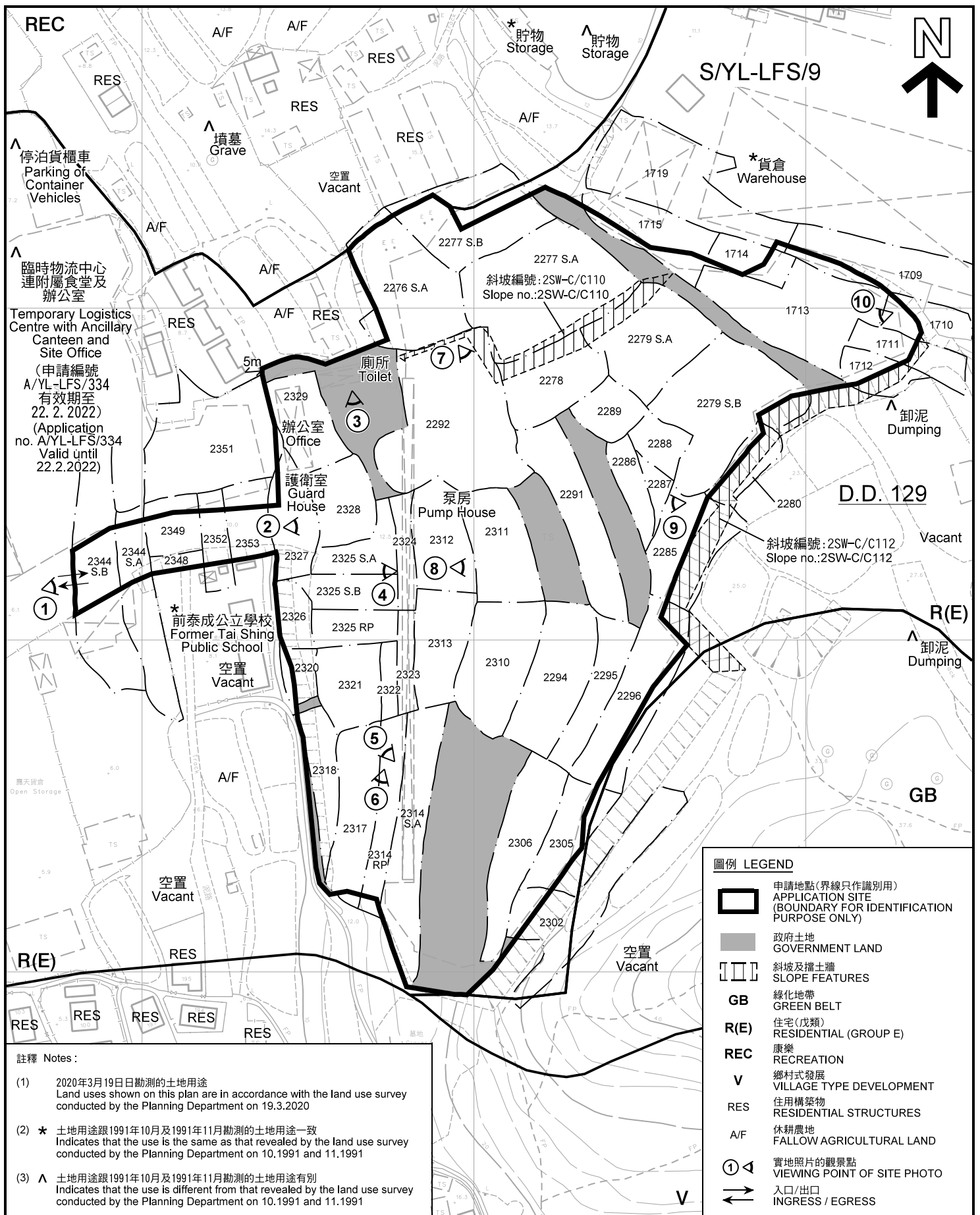
SCALE 1 : 2 500 比例尺
米 METRES 50 0 50 100 米 METRES

規劃署
PLANNING
DEPARTMENT



參考編號
REFERENCE No.
AYL-LFS/353

圖 PLAN
A-1b



註釋 Notes:

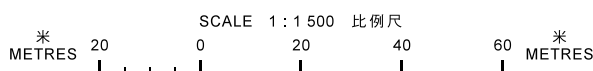
- (1) 2020年3月19日勘測的土地用途
Land uses shown on this plan are in accordance with the land use survey conducted by the Planning Department on 19.3.2020
- (2) * 土地用途跟1991年10月及1991年11月勘測的土地用途一致
Indicates that the use is the same as that revealed by the land use survey conducted by the Planning Department on 10.1991 and 11.1991
- (3) ^ 土地用途跟1991年10月及1991年11月勘測的土地用途有別
Indicates that the use is different from that revealed by the land use survey conducted by the Planning Department on 10.1991 and 11.1991

圖例 LEGEND

- 申請地點(界線只作識別用)
APPLICATION SITE (BOUNDARY FOR IDENTIFICATION PURPOSE ONLY)
- 政府土地
GOVERNMENT LAND
- 斜坡及擋土牆
SLOPE FEATURES
- GB
綠化地帶
GREEN BELT
- R(E)
住宅(成類)
RESIDENTIAL (GROUP E)
- REC
康樂
RECREATION
- V
鄉村式發展
VILLAGE TYPE DEVELOPMENT
- RES
住用構築物
RESIDENTIAL STRUCTURES
- A/F
休耕農地
FALLOW AGRICULTURAL LAND
- 實地照片的觀景點
VIEWING POINT OF SITE PHOTO
- 入口/出口
INGRESS / EGRESS

平面圖 SITE PLAN

臨時物流中心連附屬辦公室及泊車位(為期3年)
新界元朗流浮山丈量約份第129約多個地段和毗連政府土地
TEMPORARY LOGISTICS CENTRE WITH ANCILLARY OFFICE
AND PARKING OF VEHICLE FOR A PERIOD OF 3 YEARS
VARIOUS LOTS IN D.D. 129 AND ADJOINING GOVERNMENT LAND,
LAU FAU SHAN, YUEN LONG, NEW TERRITORIES



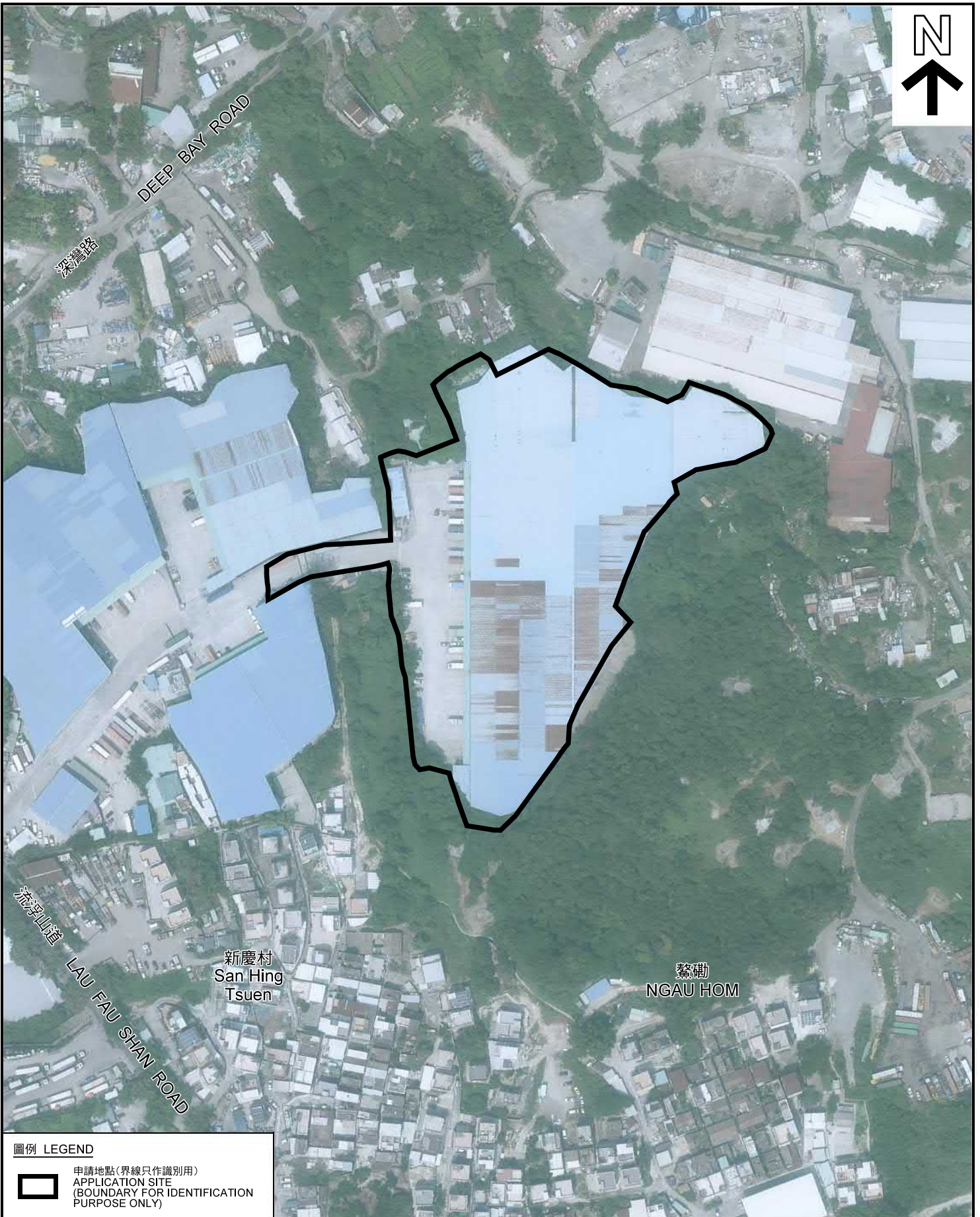
規劃署
PLANNING
DEPARTMENT



參考編號
REFERENCE No.
A/YL-LFS/353

圖 PLAN
A-2

本摘要圖於2020年6月5日擬備，所根據的資料為測量圖編號 2-SW-21D 及 2-SW-22C
EXTRACT PLAN PREPARED ON 5.6.2020
BASED ON SURVEY SHEETS No. 2-SW-21D & 2-SW-22C



圖例 LEGEND



申請地點 (界線只作識別用)
APPLICATION SITE
(BOUNDARY FOR IDENTIFICATION
PURPOSE ONLY)

本摘要圖於2020年5月28日擬備，所根據的資料為地政總署於2019年10月2日拍得的航攝照片編號E069931C、E070098C及E070099C
EXTRACT PLAN PREPARED ON 28.5.2020
BASED ON AERIAL PHOTO No. E069931C
E070098C AND E070099C TAKEN ON
2.10.2019 BY LANDS DEPARTMENT

航攝照片 AERIAL PHOTO

臨時物流中心連附屬辦公室及泊車位 (為期3年)
新界元朗流浮山丈量約份第129約多個地段和毗連政府土地
TEMPORARY LOGISTICS CENTRE WITH ANCILLARY OFFICE
AND PARKING OF VEHICLE FOR A PERIOD OF 3 YEARS
VARIOUS LOTS IN D.D. 129 AND ADJOINING GOVERNMENT LAND,
LAU FAU SHAN, YUEN LONG, NEW TERRITORIES

規劃署
PLANNING
DEPARTMENT



參考編號
REFERENCE No.
AYL-LFS/353

圖 PLAN
A-3



申請地點界線只作識別用
APPLICATION SITE BOUNDARY FOR IDENTIFICATION PURPOSE ONLY

實地照片 SITE PHOTO

臨時物流中心連附屬辦公室及泊車位(為期3年)
新界元朗流浮山丈量約份第129約多個地段和毗連政府土地
TEMPORARY LOGISTICS CENTRE WITH ANCILLARY OFFICE
AND PARKING OF VEHICLE FOR A PERIOD OF 3 YEARS
VARIOUS LOTS IN D.D. 129 AND ADJOINING GOVERNMENT LAND,
LAU FAU SHAN, YUEN LONG, NEW TERRITORIES

規劃署
PLANNING
DEPARTMENT



本圖於2020年5月28日擬備，所根據的資料為攝於2020年3月19日的實地照片
PLAN PREPARED ON 28.5.2020
BASED ON SITE PHOTOS
TAKEN ON 19.3.2020

參考編號
REFERENCE No.
A/YL-LFS/353

圖 PLAN
A-4a



5

申請地點
APPLICATION SITE



6

申請地點
APPLICATION SITE



7

申請地點
APPLICATION SITE

申請地點界線只作識別用
APPLICATION SITE BOUNDARY FOR IDENTIFICATION PURPOSE ONLY

實地照片 SITE PHOTO

臨時物流中心連附屬辦公室及泊車位(為期3年)
新界元朗流浮山丈量約份第129約多個地段和毗連政府土地
TEMPORARY LOGISTICS CENTRE WITH ANCILLARY OFFICE
AND PARKING OF VEHICLE FOR A PERIOD OF 3 YEARS
VARIOUS LOTS IN D.D. 129 AND ADJOINING GOVERNMENT LAND,
LAU FAU SHAN, YUEN LONG, NEW TERRITORIES

規劃署
PLANNING
DEPARTMENT



參考編號
REFERENCE No.
A/YL-LFS/353

圖 PLAN
A-4b

本圖於2020年5月28日擬備，所根據的資料為攝於2020年3月19日的實地照片
PLAN PREPARED ON 28.5.2020
BASED ON SITE PHOTOS
TAKEN ON 19.3.2020



申請地點
APPLICATION SITE



申請地點
APPLICATION SITE



申請地點
APPLICATION SITE

實地照片 SITE PHOTO

臨時物流中心連附屬辦公室及泊車位(為期3年)
 新界元朗流浮山丈量約份第129約多個地段和毗連政府土地
 TEMPORARY LOGISTICS CENTRE WITH ANCILLARY OFFICE
 AND PARKING OF VEHICLE FOR A PERIOD OF 3 YEARS
 VARIOUS LOTS IN D.D. 129 AND ADJOINING GOVERNMENT LAND,
 LAU FAU SHAN, YUEN LONG, NEW TERRITORIES

規劃署
**PLANNING
 DEPARTMENT**



參考編號
 REFERENCE No.
A/YL-LFS/353

圖 PLAN
A-4c

本圖於2020年3月24日擬備，所根據的資料為攝於2020年3月19日的實地照片
 PLAN PREPARED ON 24.3.2020
 BASED ON SITE PHOTOS
 TAKEN ON 19.3.2020