

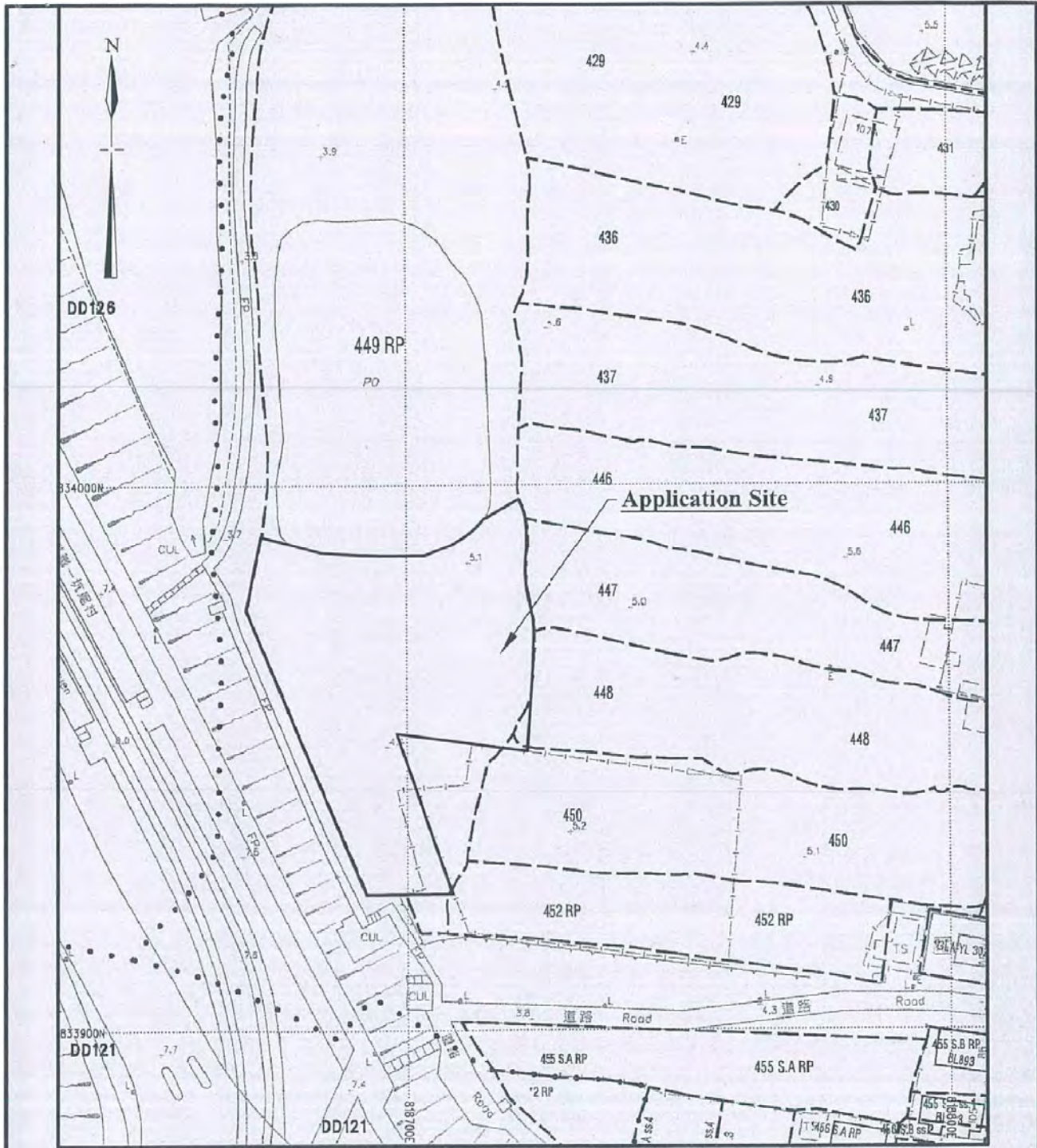
Extracted from Draft Ping Shan Outline Zoning Plan No. S/YL-PS/17

<p>Not to Scale For Identification Purpose Only</p>	<p><b>Location Plan</b></p>	<p><b>Goldrich Planners &amp; Surveyors Ltd.</b></p>
<p>December 2017</p>	<p>Lots 448(Part), 449RP(Part), 450(Par-) and 452RP(Part) in D. D. 122 Hang Mei Tsuen, Ping Shan, Yuen Long, New Territories</p>	<p><b>Plan 1 ( P10120 )</b></p>

<p>參考編號 REFERENCE No. <b>AYL-PS/552</b></p>	<p>繪圖 DRAWING <b>A-1</b></p>
---	----------------------------------

(摘錄自申請人於29. 12. 2017呈交的申請書)  
(Extract from Applicant's  
Submission Dated 29.12.2017)



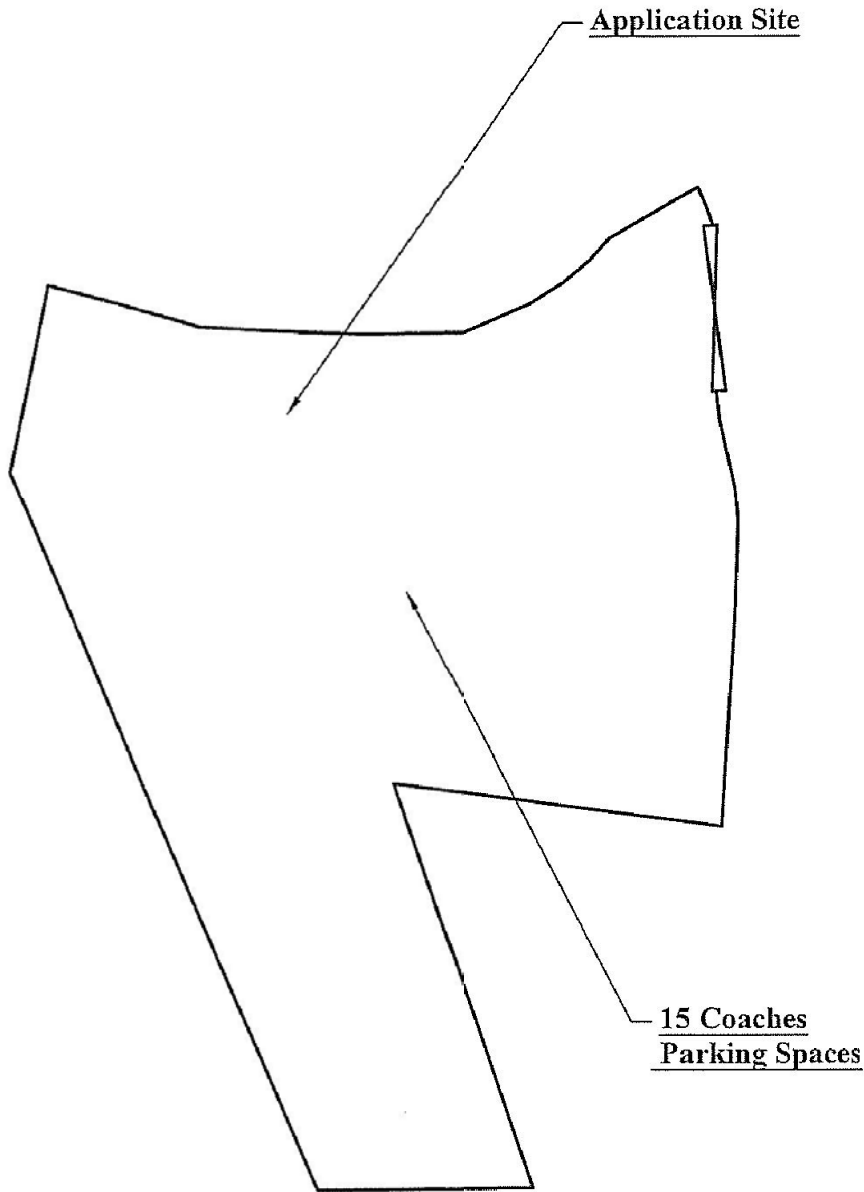


Site Area: 2,249m<sup>2</sup>

<del>1:1000</del>	<b>Lot Index Plan</b>	<b>Goldrich Planners &amp; Surveyors Ltd.</b>
December 2017	Lots 448(Part), 449RP(Part), 450(Part) and 452RP(Part) in D. D. 122 Hang Mei Tsuen, Ping Shan, Yuen Long, New Territories	Plan 2 ( P10120 )

參考編號 REFERENCE No. AYL-PS/552	繪圖 DRAWING A-2
----------------------------------	-------------------

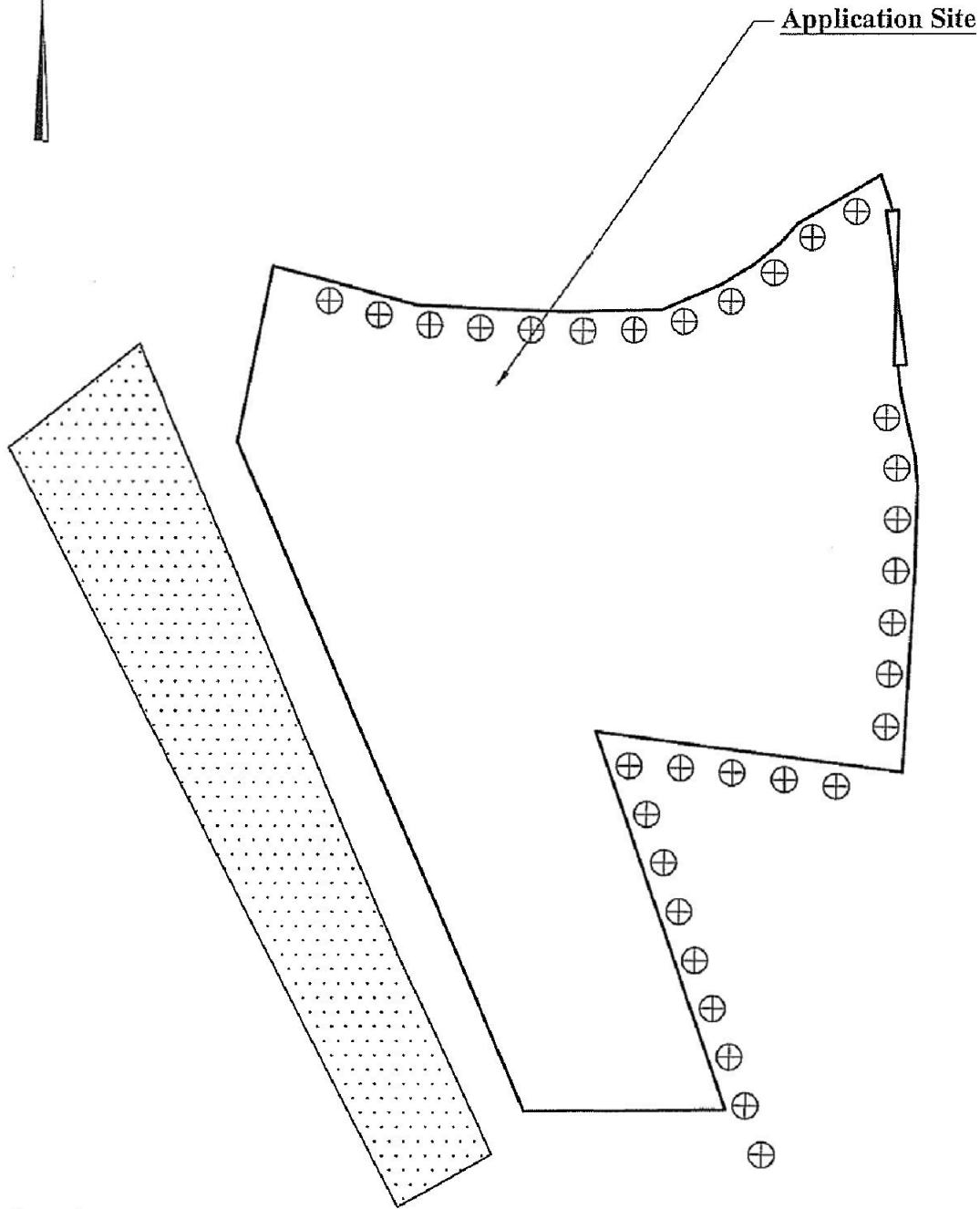
(摘錄自申請人於29. 12. 2017呈交的申請書)  
(Extract from Applicant's  
Submission Dated 29.12.2017)



±: 500	Site Plan	Goldrich Planners & Surveyors Ltd.
December 2017	Lots 448(Part), 449RP(Part), 450(Part) and 452RP(Part) in D. D. 122 Hang Mei Tsuen, Ping Shan, Yuen Long, New Territories	Plan 3 ( P 10120 )

參考編號 REFERENCE No. A/YL-PS/552	繪圖 DRAWING A-3
-----------------------------------	-------------------

(摘錄自申請人於29. 12. 2017呈交的申請書)  
(Extract from Applicant's  
Submission Dated 29.12.2017)



Legend

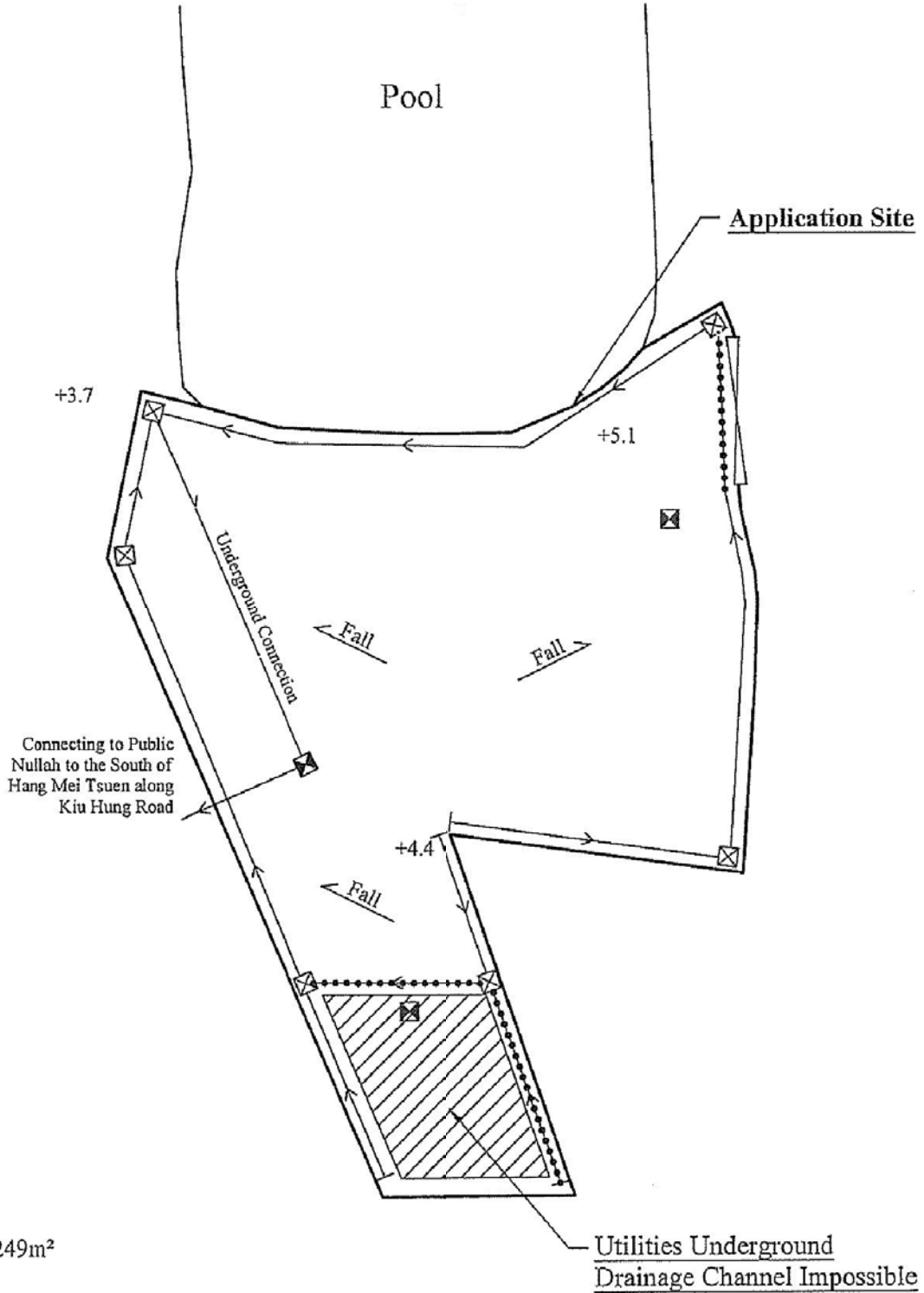


Existing Trees

Existing Trees to be Preserved	Spacing (Centre to Centre)	Size (Height)	Quantity
⊕ Ficus Microcarpa (細葉榕)	4m	2.75m	32
<b>1-500</b>	<b>Tree Preservation Proposal</b>		<b>Goldrich Planners &amp; Surveyors Ltd.</b>
<b>December 2017</b>	Lots 448(Part), 449RP(Part), 450(Part) and 452RP(Part) in D. D. 122 Hang Mei Tsuen, Ping Shan, Yuen Long, New Territories		<b>Plan 4 ( P 10120 )</b>

參考編號 REFERENCE No. <b>A/YL-PS/552</b>	繪圖 DRAWING <b>A-4</b>
--	--------------------------

(摘錄自申請人於29. 12. 2017呈交的申請書)  
(Extract from Applicant's  
Submission Dated 29.12.2017)



Site Area: 2249m<sup>2</sup>

Legend:

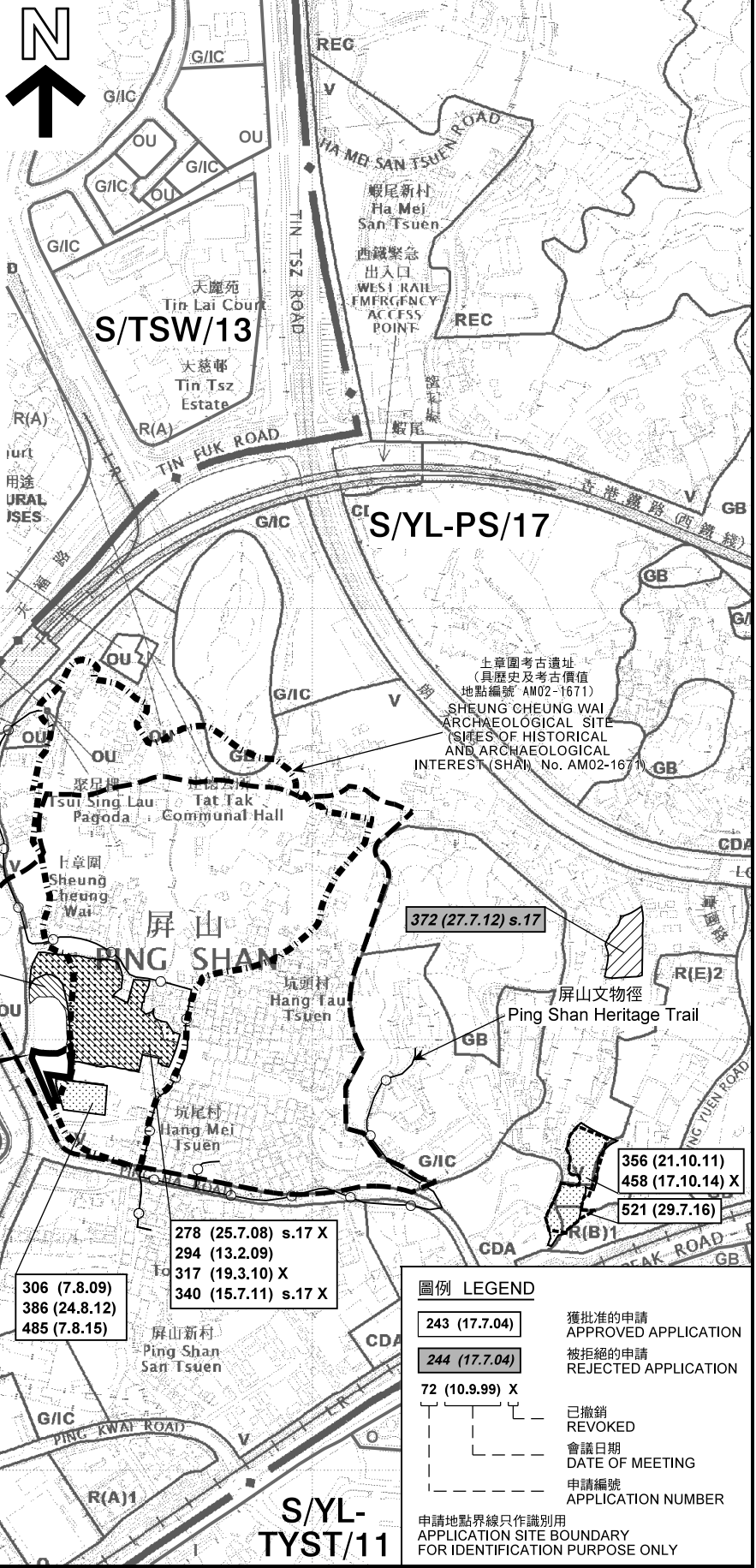
- ☒ Catchpit
- ☒ Manhole
- ← 375mm U-Channel
- ⋯⋯⋯ I.C. Cover

<del>1:500</del>	<b>Approved Drainage Proposal</b>	<b>Goldrich Planners &amp; Surveyors Ltd.</b>
December 2017	Lots 448(Part), 449RP(Part), 450(Part) and 452RP(Part) in D. D. 122 Hang Mei Tsuen, Ping Shan, Yuen Long, New Territories	Plan 5 ( P 10120 )

參考編號 AYL-PS/552	REFERENCE No. AYL-PS/552	繪圖 DRAWING A-5
--------------------	-----------------------------	----------------------

(摘錄自申請人於29. 12. 2017呈交的申請書)  
(Extract from Applicant's  
Submission Dated 29.12.2017)






本摘要圖於2018年1月26日擬備，所根據的資料為2017年5月26日展示的分區計劃大綱圖編號 S/YL-PS/17 EXTRACT PLAN PREPARED ON 26.1.2018 BASED ON OUTLINE ZONING PLAN No. S/YL-PS/17 EXHIBITED ON 26.5.2017

**位置圖 LOCATION PLAN**

臨時旅遊車停車場的規劃許可續期(為期3年)  
新界元朗屏山坑尾村丈量約份第122約地段第448號(部分)、第449號餘段(部分)、第450號(部分)及第452號餘段(部分)  
RENEWAL OF PLANNING APPROVAL FOR TEMPORARY VEHICLE PARK FOR COACHES FOR A PERIOD OF 3 YEARS LOTS 448 (PART), 449 RP (PART), 450 (PART) AND 452 RP (PART) IN D.D. 122, HANG MEI TSUEN, PING SHAN, YUEN LONG, NEW TERRITORIES  
SCALE 1 : 7 500 比例尺

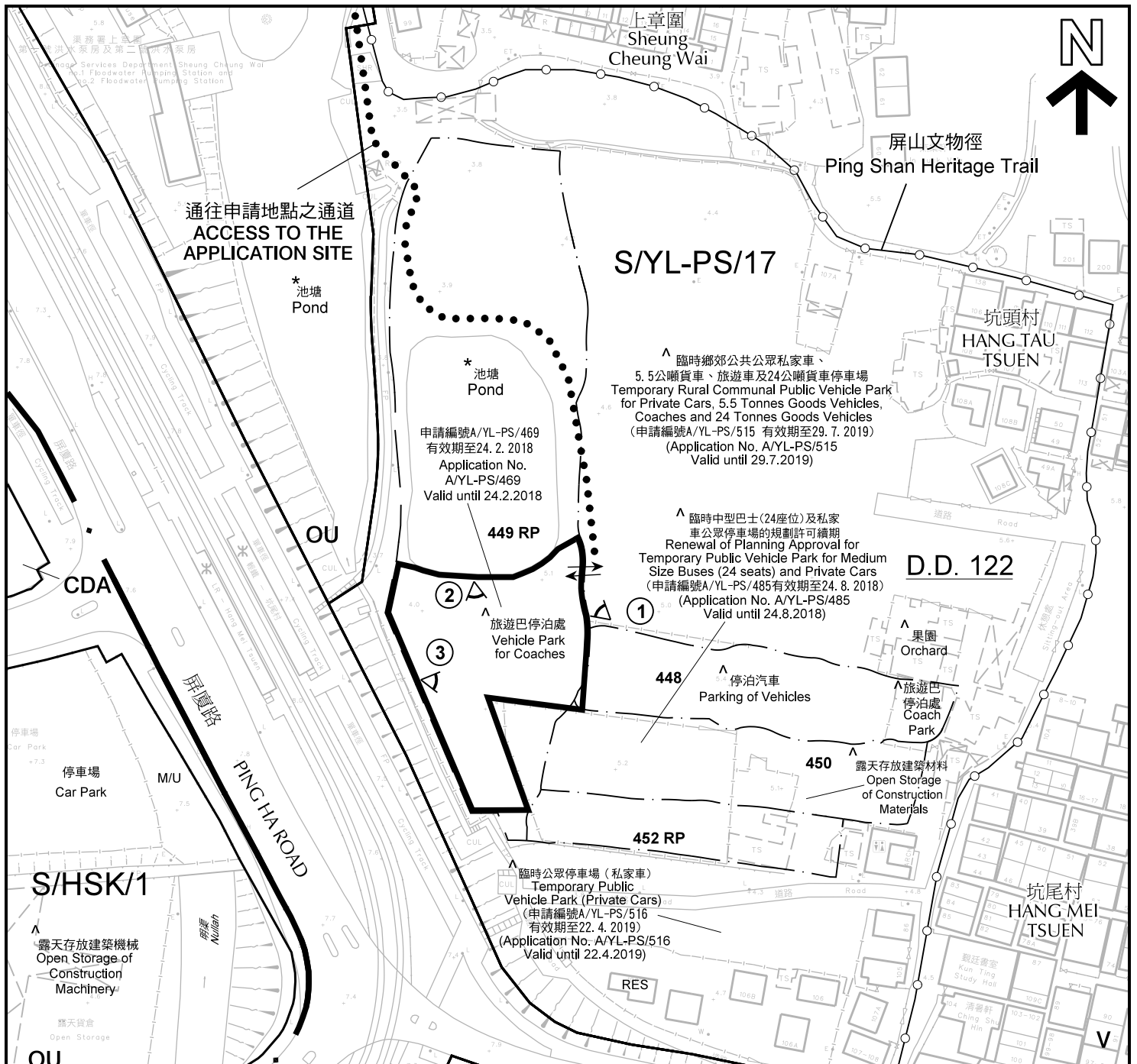
米 100 0 100 200 300 米  
METRES

**規劃署**  
**PLANNING DEPARTMENT**



參考編號  
REFERENCE No.  
**A/YL-PS/552**

圖 PLAN  
**A-1**



通往申請地點之通道  
ACCESS TO THE APPLICATION SITE

\* 池塘  
Pond

\* 池塘  
Pond

申請編號A/YL-PS/469  
有效期至24.2.2018  
Application No.  
A/YL-PS/469  
Valid until 24.2.2018

449 RP

旅遊巴士停泊處  
Vehicle Park for Coaches

S/YL-PS/17

臨時鄉郊公共公眾私家車、  
5.5公噸貨車、旅遊車及24公噸貨車停車場  
Temporary Rural Communal Public Vehicle Park  
for Private Cars, 5.5 Tonnes Goods Vehicles,  
Coaches and 24 Tonnes Goods Vehicles  
(申請編號A/YL-PS/515 有效期至29.7.2019)  
(Application No. A/YL-PS/515  
Valid until 29.7.2019)

臨時中型巴士(24座位)及私家  
車公眾停車場的規劃許可可續期  
Renewal of Planning Approval for  
Temporary Public Vehicle Park for Medium  
Size Buses (24 seats) and Private Cars  
(申請編號A/YL-PS/485有效期至24.8.2018)  
(Application No. A/YL-PS/485  
Valid until 24.8.2018)

448

停泊汽車  
Parking of Vehicles

450

露天存放建築材料  
Open Storage of Construction  
Materials

452 RP

臨時公眾停車場(私家車)  
Temporary Public  
Vehicle Park (Private Cars)  
(申請編號A/YL-PS/516  
有效期至22.4.2019)  
(Application No. A/YL-PS/516  
Valid until 22.4.2019)

RES

D.D. 122

果園  
Orchard

旅遊巴士  
停泊處  
Coach  
Park

坑尾村  
HANG MEI  
TSUEN

S/HSK/1

露天存放建築機械  
Open Storage of  
Construction  
Machinery

OU

OU

註釋 Notes:

- (1) 2018年1月22日勘測的土地用途  
Land uses shown on this plan are in accordance with the land use survey conducted by the Planning Department on 22.1.2018
- (2) \* 土地用途跟1993年6月22日及7月7日勘測的土地用途一致  
Indicates that the use is the same as that revealed by the land use survey conducted by the Planning Department on 22.6.1993 and 7.7.1993
- (3) ^ 土地用途跟1993年6月22日及7月7日勘測的土地用途有別  
Indicates that the use is different from that revealed by the land use survey conducted by the Planning Department on 22.6.1993 and 7.7.1993

圖例 LEGEND

- 申請地點(界線只作識別用)  
APPLICATION SITE  
(BOUNDARY FOR IDENTIFICATION  
PURPOSE ONLY)
- 鄉村式發展  
VILLAGE TYPE DEVELOPMENT
- 綜合發展區  
COMPREHENSIVE DEVELOPMENT  
AREA
- 其他指定用途  
OTHER SPECIFIED USES
- 住用構築物  
RESIDENTIAL STRUCTURES
- 荒地  
UNUSED LAND
- 實地照片的觀景點  
VIEWING POINT OF SITE PHOTO
- 入口/出口  
INGRESS / EGRESS

平面圖 SITE PLAN

臨時旅遊車停車場的規劃許可續期(為期3年)  
新界元朗屏山坑尾村丈量約份第122約地段第448號(部分)、  
第449號餘段(部分)、第450號(部分)及第452號餘段(部分)  
RENEWAL OF PLANNING APPROVAL FOR TEMPORARY  
VEHICLE PARK FOR COACHES FOR A PERIOD OF 3 YEARS  
LOTS 448 (PART), 449 RP (PART), 450 (PART) AND  
452 RP (PART) IN D.D. 122, HANG MEI TSUEN, PING SHAN,  
YUEN LONG, NEW TERRITORIES  
SCALE 1 : 1 500 比例尺

米 30 0 30 60 米  
METRES

規劃署  
PLANNING  
DEPARTMENT

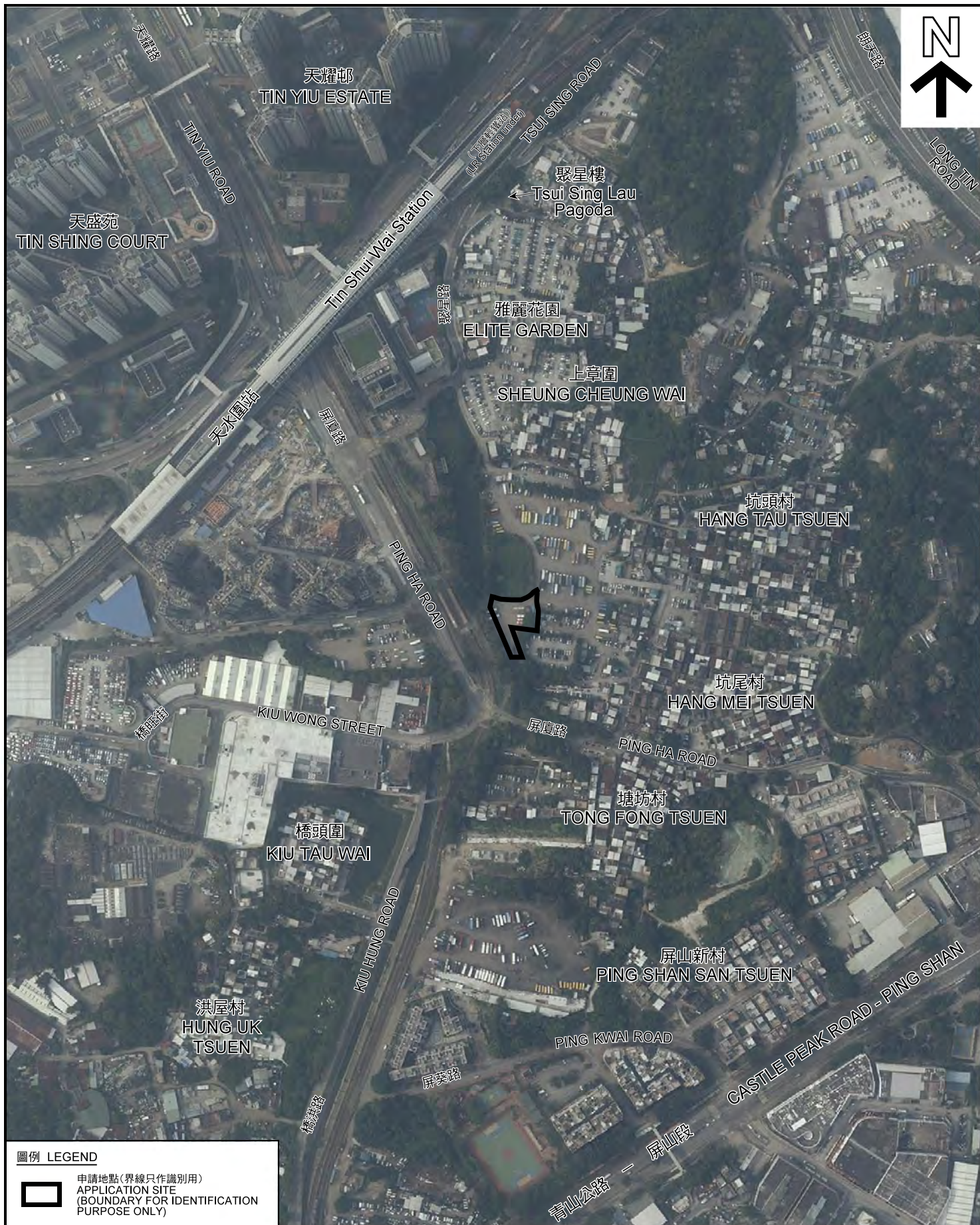


參考編號  
REFERENCE No.  
A/YL-PS/552


圖 PLAN  
A-2

本摘要圖於2018年1月29日擬備，所根據的資料為測量圖編號 6-NW-8C 和 6-NW-8D  
EXTRACT PLAN PREPARED ON 29.1.2018  
BASED ON SURVEY SHEETS No.  
6-NW-8 AND 6-NW-8D





**圖例 LEGEND**

 申請地點(界線只作識別用)  
APPLICATION SITE  
(BOUNDARY FOR IDENTIFICATION  
PURPOSE ONLY)

本摘要圖於2018年1月23日擬備，所根據的資料為地政總署於2017年4月29日拍得的航攝照片編號 E023816C  
EXTRACT PLAN PREPARED ON 23.1.2018  
BASED ON AERIAL PHOTO No.  
E023816C TAKEN ON 29.4.2017  
BY LANDS DEPARTMENT

**航攝照片 AERIAL PHOTO**

臨時旅遊車停車場的規劃許可續期(為期3年)  
新界元朗屏山坑尾村丈量約份第122約地段第448號(部分)、  
第449號餘段(部分)、第450號(部分)及第452號餘段(部分)  
RENEWAL OF PLANNING APPROVAL FOR TEMPORARY  
VEHICLE PARK FOR COACHES FOR A PERIOD OF 3 YEARS  
LOTS 448 (PART), 449 RP (PART), 450 (PART) AND  
452 RP (PART) IN D.D. 122, HANG MEI TSUEN, PING SHAN,  
YUEN LONG, NEW TERRITORIES

規劃署  
PLANNING  
DEPARTMENT



參考編號  
REFERENCE No.  
AYL-PS/552

PLAN  
A-3



1



申請地點  
APPLICATION SITE

2



申請地點  
APPLICATION SITE

3



申請地點  
APPLICATION SITE

### 實地照片 SITE PHOTOS

臨時旅遊車停車場的規劃許可續期(為期3年)  
 新界元朗屏山坑尾村丈量約份第122約地段第448號(部分)、  
 第449號餘段(部分)、第450號(部分)及第452號餘段(部分)  
 RENEWAL OF PLANNING APPROVAL FOR TEMPORARY  
 VEHICLE PARK FOR COACHES FOR A PERIOD OF 3 YEARS  
 LOTS 448 (PART), 449 RP (PART), 450 (PART) AND  
 452 RP (PART) IN D.D. 122, HANG MEI TSUEN, PING SHAN,  
 YUEN LONG, NEW TERRITORIES

規劃署  
 PLANNING  
 DEPARTMENT



參考編號  
 REFERENCE No.  
 A/YL-PS/552

圖 PLAN  
 A-4

本圖於2018年1月29日擬備，所根據的資料為攝於2018年1月5日的實地照片  
 PLAN PREPARED ON 29.1.2018  
 BASED ON SITE PHOTOS  
 TAKEN ON 5.1.2018