

Legend

- The Application Site
- Parking Space for Private Car (2.5m x 5m)

Layout Plan

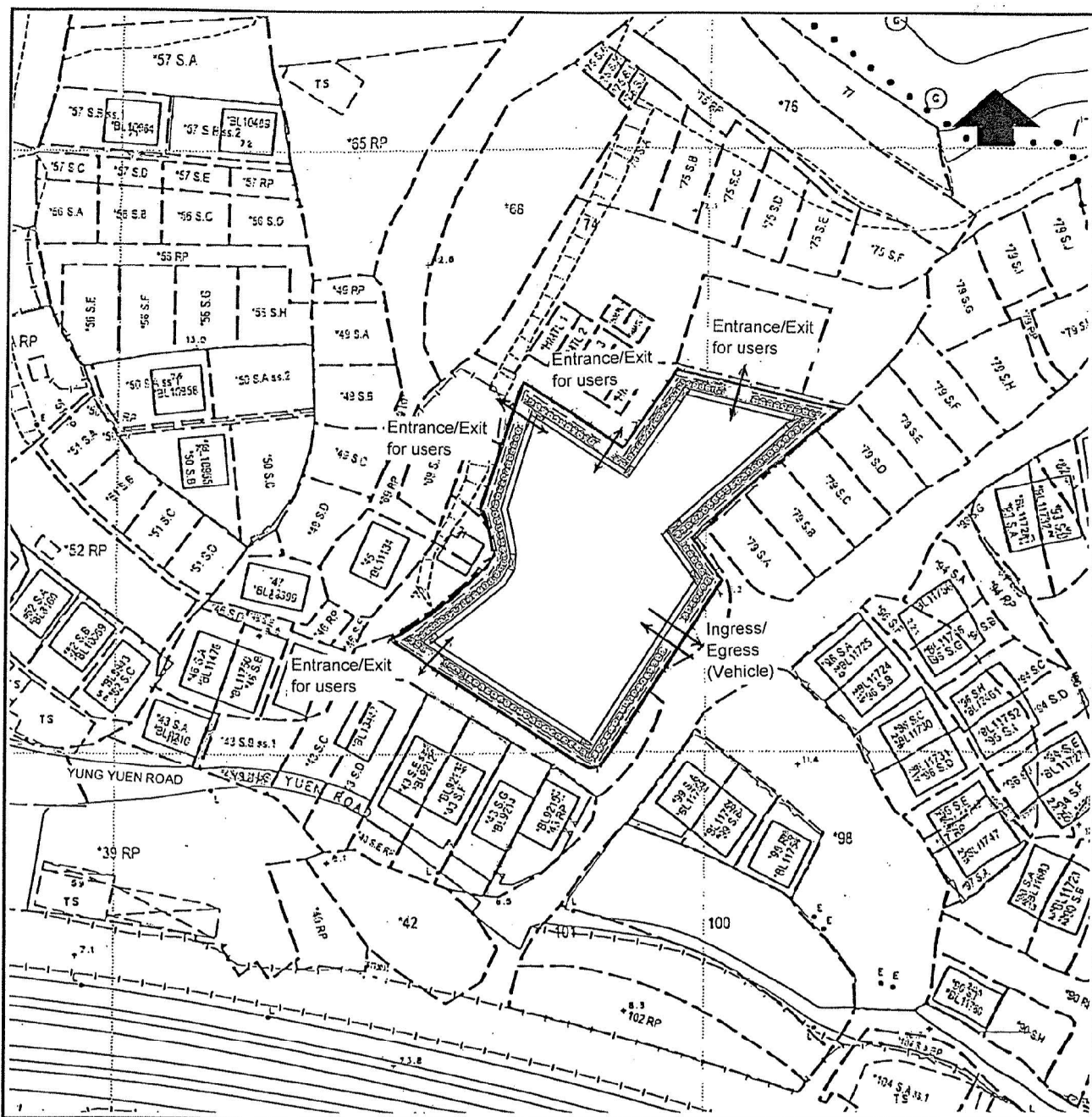
Temporary Public Vehicle Park for Private Cars
Various Lots in DD122
and Adjoining Government Land,
Ha Mei San Tsuen, Ping Shan, Yuen Long

0 10 20 30 40 50 METRES

Plan 3

PlanArch Consultants Ltd.

Revision: Date: 25.11.2020



Legend

The Application Site

Fencing

Landscaping Proposal

Landscaping Belt (*Bauhinia blakeana* Dunn (洋紫荆))

Drainage Proposal

Surface Channel

Catch Pit

Size

(Height in mm)

2,750

Spacing

(Centre to Centre in mm)

3,000 intervals

Environmental Mitigation Plan

Temporary Public Vehicle Park for Private Cars
Various Lots in DD122 and Adjoining Government Land,
Ha Mei San Tsuen, Ping Shan, Yuen Long

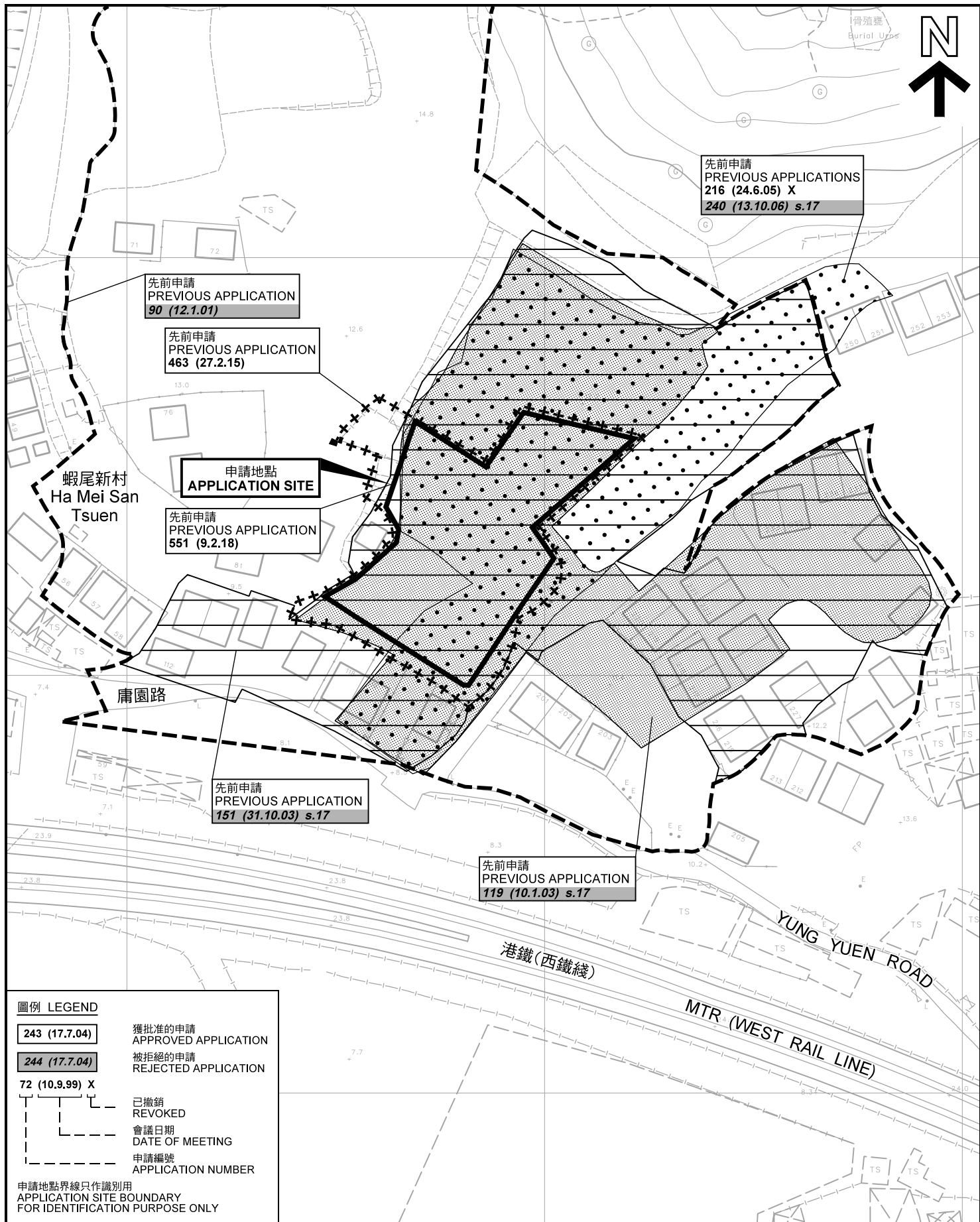
0 10 20 30 40 50 METRES

Plan 4

PlanArch Consultants Ltd.

Revision:

Date: 26.11.2020



先前申請圖 PREVIOUS APPLICATIONS PLAN

臨時公眾私家車停車場(為期3年)
新界元朗屏山蝦尾新村丈量約份第122約地段第44號(部分)、
第72號(部分)及第73號(部分)和毗連政府土地
TEMPORARY PUBLIC VEHICLE PARK FOR PRIVATE CARS
FOR A PERIOD OF 3 YEARS
LOTS 44 (PART), 72 (PART) AND 73 (PART) IN D.D.122
AND ADJOINING GOVERNMENT LAND, HA MEI SAN TSUEN,
PING SHAN, YUEN LONG, NEW TERRITORIES

SCALE 1 : 1 200 比例尺

米 20 0 20 40 米
METRES

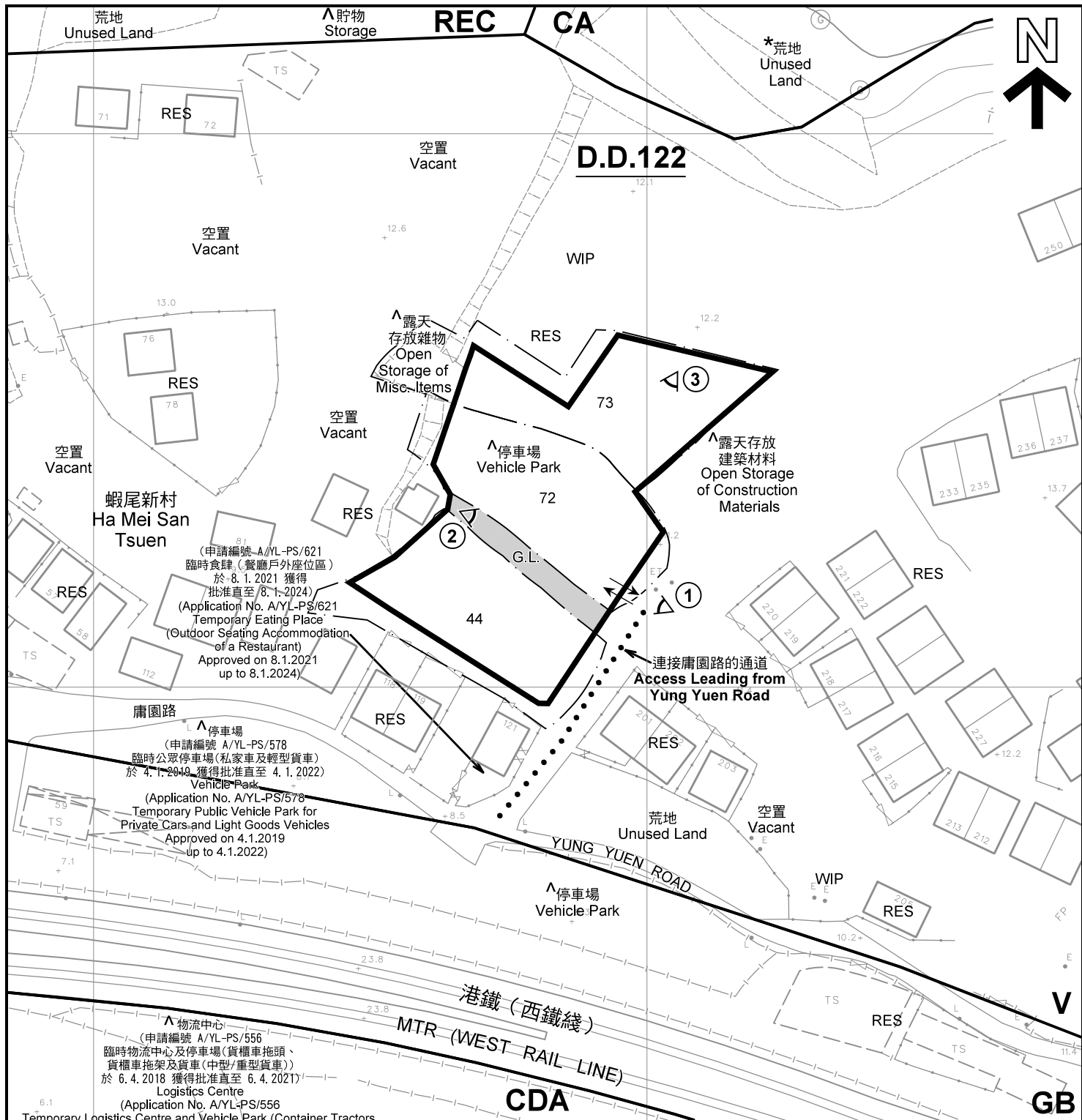
規劃署
PLANNING
DEPARTMENT



參考編號
REFERENCE No.
A/YL-PS/626

圖 PLAN
A-1b

本摘要圖於2021年1月29日擬備，所根據的資料為測量圖編號 6-NW-3D 及 6-NW-8B
EXTRACT PLAN PREPARED ON 29.1.2021
BASED ON SURVEY SHEETS No.
6-NW-3D & 6-NW-8B



註釋 Notes:

- (1) 2021年1月27日勘測的土地用途
Land uses shown on this plan are in accordance with the land use survey conducted by the Planning Department on 27.1.2021
- (2) * 土地用途跟1993年6月勘測的土地用途一致
Indicates that the use is the same as that revealed by the land use survey conducted by the Planning Department in Jun 1993
- (3) ^ 土地用途跟1993年6月勘測的土地用途有別
Indicates that the use is different from that revealed by the land use survey conducted by the Planning Department in Jun 1993

圖例 LEGEND



申請地點(界線只作識別用)
APPLICATION SITE
(BOUNDARY FOR IDENTIFICATION
PURPOSE ONLY)

CDA

綜合發展區
COMPREHENSIVE DEVELOPMENT
AREA

V

鄉村式發展
VILLAGE TYPE DEVELOPMENT

GB

綠化地帶
GREEN BELT

REC

康樂
RECREATION

CA

自然保育區
CONSERVATION AREA

G.L.

政府土地
GOVERNMENT LAND

RES

住用構築物
RESIDENTIAL STRUCTURES

WIP

施工中
WORKS IN PROGRESS

①

實地照片的觀景點
VIEWING POINT OF SITE PHOTO

↔

入口/出口
INGRESS / EGRESS

平面圖 SITE PLAN

臨時公眾私家車停車場(為期3年)
新界元朗屏山蝦尾新村丈量約份第122約地段第44號(部分)、
第72號(部分)及第73號(部分)和毗連政府土地
TEMPORARY PUBLIC VEHICLE PARK FOR PRIVATE CARS
FOR A PERIOD OF 3 YEARS
LOTS 44 (PART), 72 (PART) AND 73 (PART) IN D.D.122
AND ADJOINING GOVERNMENT LAND, HA MEI SAN TSUEN,
PING SHAN, YUEN LONG, NEW TERRITORIES
SCALE 1:1 000 比例尺

本摘要圖於2021年2月8日擬備，所根據的
資料為測量圖編號 6-NW-3D 及 6-NW-8B
EXTRACT PLAN PREPARED ON 8.2.2021
BASED ON SURVEY SHEETS No.
6-NW-3D & 6-NW-8B

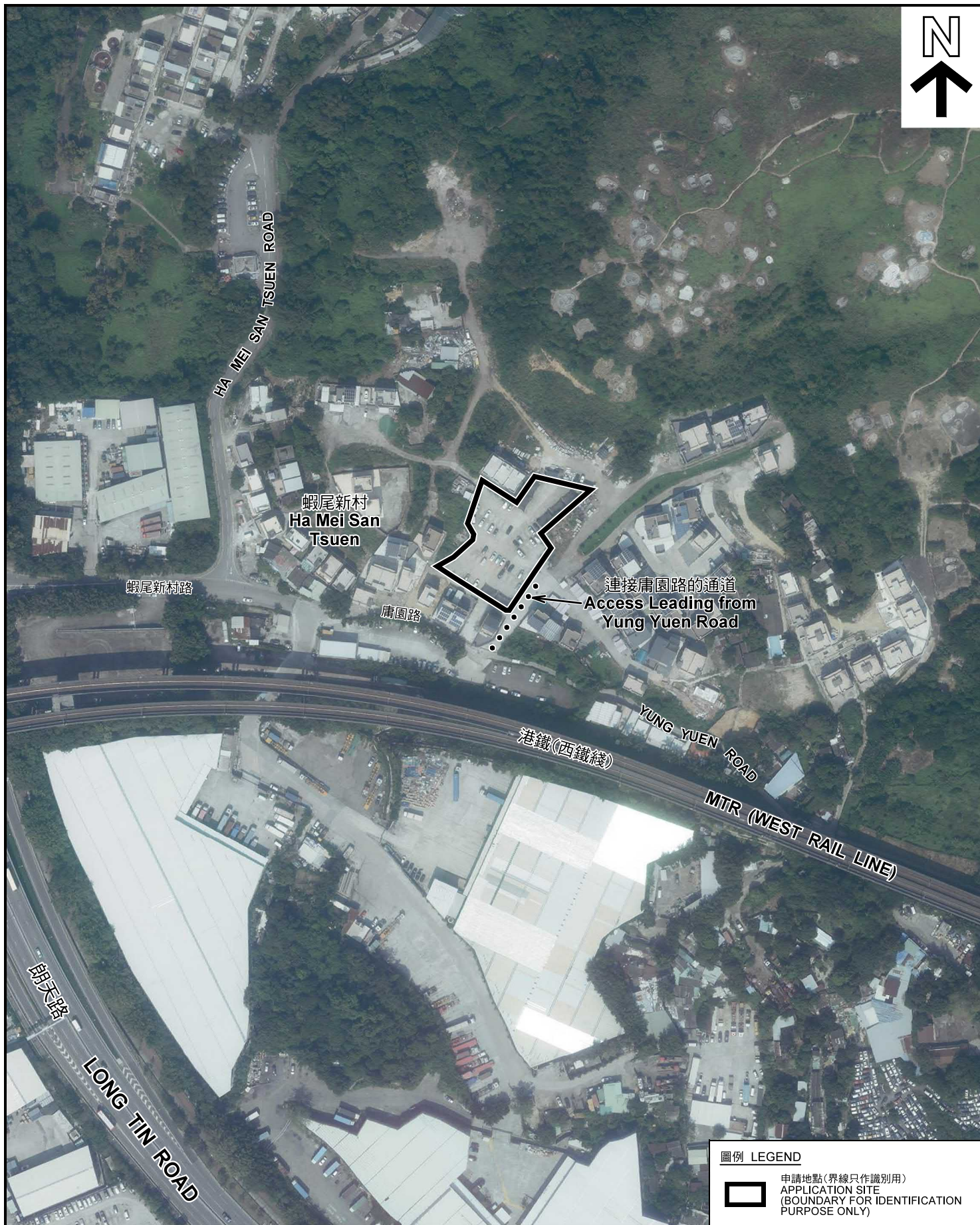
規劃署
PLANNING
DEPARTMENT



參考編號
REFERENCE No.
A/YL-PS/626

圖 PLAN
A-2

米 20 0 20 40 米
METRES



圖例 LEGEND



申請地點(界線只作識別用)
APPLICATION SITE
(BOUNDARY FOR IDENTIFICATION
PURPOSE ONLY)

本摘要圖於2021年1月21日擬備，所根據
的資料為地政總署於2019年10月18日拍得
的航攝照片編號 E072774C
EXTRACT PLAN PREPARED ON 21.1.2021
BASED ON AERIAL PHOTO No.
E072774C TAKEN ON 18.10.2019
BY LANDS DEPARTMENT

航攝照片 AERIAL PHOTO

臨時公眾私家車停車場(為期3年)
新界元朗屏山蝦尾新村丈量約份第122約地段第44號(部分)、
第72號(部分)及第73號(部分)和毗連政府土地
TEMPORARY PUBLIC VEHICLE PARK FOR PRIVATE CARS
FOR A PERIOD OF 3 YEARS
LOTS 44 (PART), 72 (PART) AND 73 (PART) IN D.D.122
AND ADJOINING GOVERNMENT LAND, HA MEI SAN TSUEN,
PING SHAN, YUEN LONG, NEW TERRITORIES

規劃署
PLANNING
DEPARTMENT



參考編號
REFERENCE No.
A/YL-PS/626

圖 PLAN
A-3

申請地點
APPLICATION SITE



連接庸園路的通道
Access Leading from
Yung Yuen Road



申請地點
APPLICATION SITE



申請地點
APPLICATION SITE

本圖於2021年2月8日擬備，所根據的資料為攝於2021年1月27日的實地照片
PLAN PREPARED ON 8.2.2021
BASED ON SITE PHOTOS
TAKEN ON 27.1.2021

實地照片 SITE PHOTOS

臨時公眾私家車停車場(為期3年)
新界元朗屏山蝦尾新村丈量約份第122約地段第44號(部分)、
第72號(部分)及第73號(部分)和毗連政府土地
TEMPORARY PUBLIC VEHICLE PARK FOR PRIVATE CARS
FOR A PERIOD OF 3 YEARS
LOTS 44 (PART), 72 (PART) AND 73 (PART) IN D.D.122
AND ADJOINING GOVERNMENT LAND, HA MEI SAN TSUEN,
PING SHAN, YUEN LONG, NEW TERRITORIES

規劃署
PLANNING
DEPARTMENT



參考編號
REFERENCE No.
A/YL-PS/626

圖 PLAN
A-4