

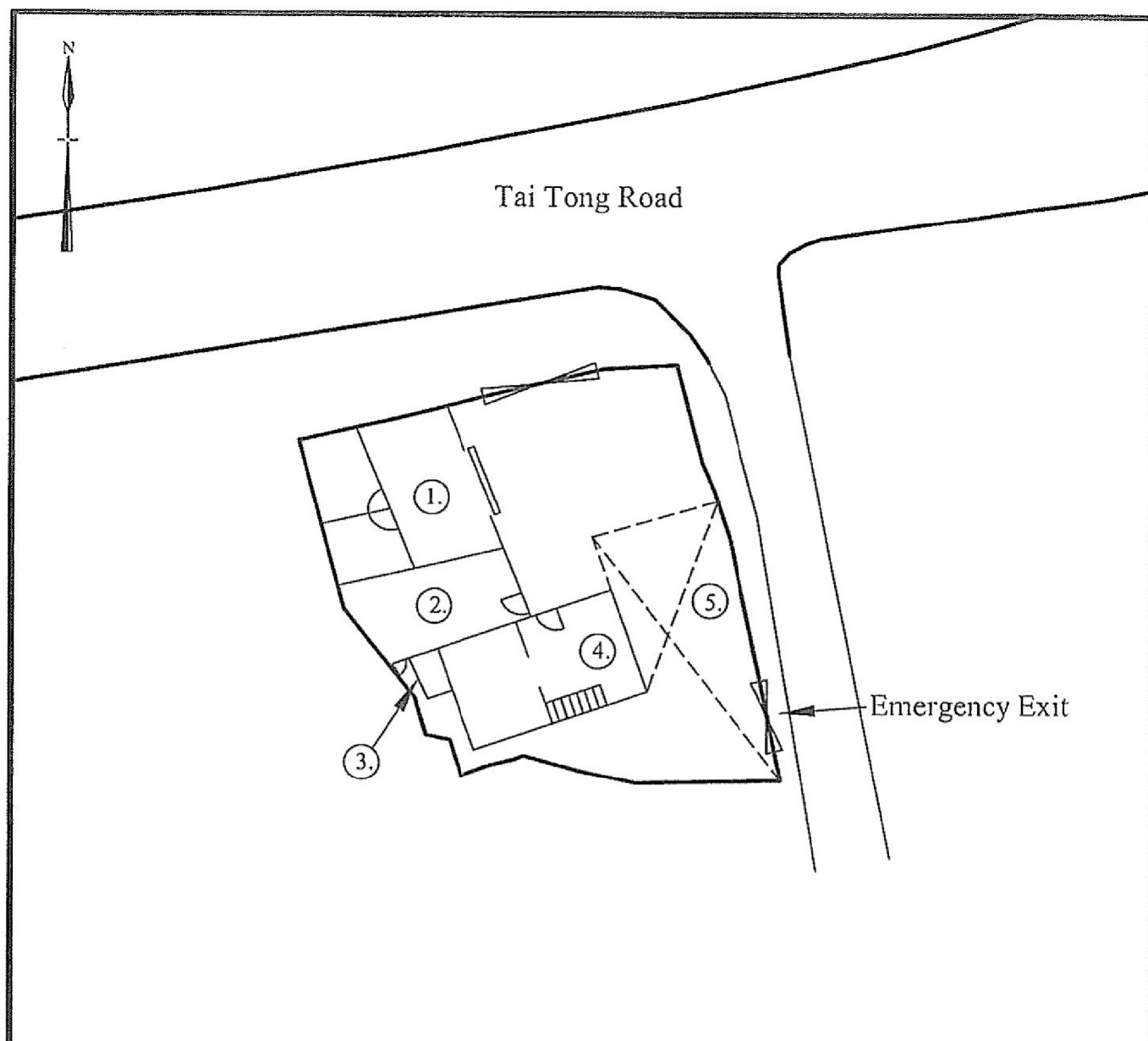
Extracted from Approved Tai Tong Outline Zoning Plan No. S/YL-TT/16

Not to scale	<b>Location Plan</b>	<b>Goldrich Planners &amp; Surveyors Ltd.</b>
July 2019	Lot Nos. 266 R. P. (Part) and 268 (Part) in D. D. 117 and Adjoining Government Land	Plan 1a (P16006)

(摘錄自申請人於 10. 7. 2019 呈交的進一步資料)  
(Extract from Applicant's Further  
Information Submitted on 10.7.2019)

參考編號  
REFERENCE No.  
A/YL-TT/472

繪圖 DRAWING  
A-1



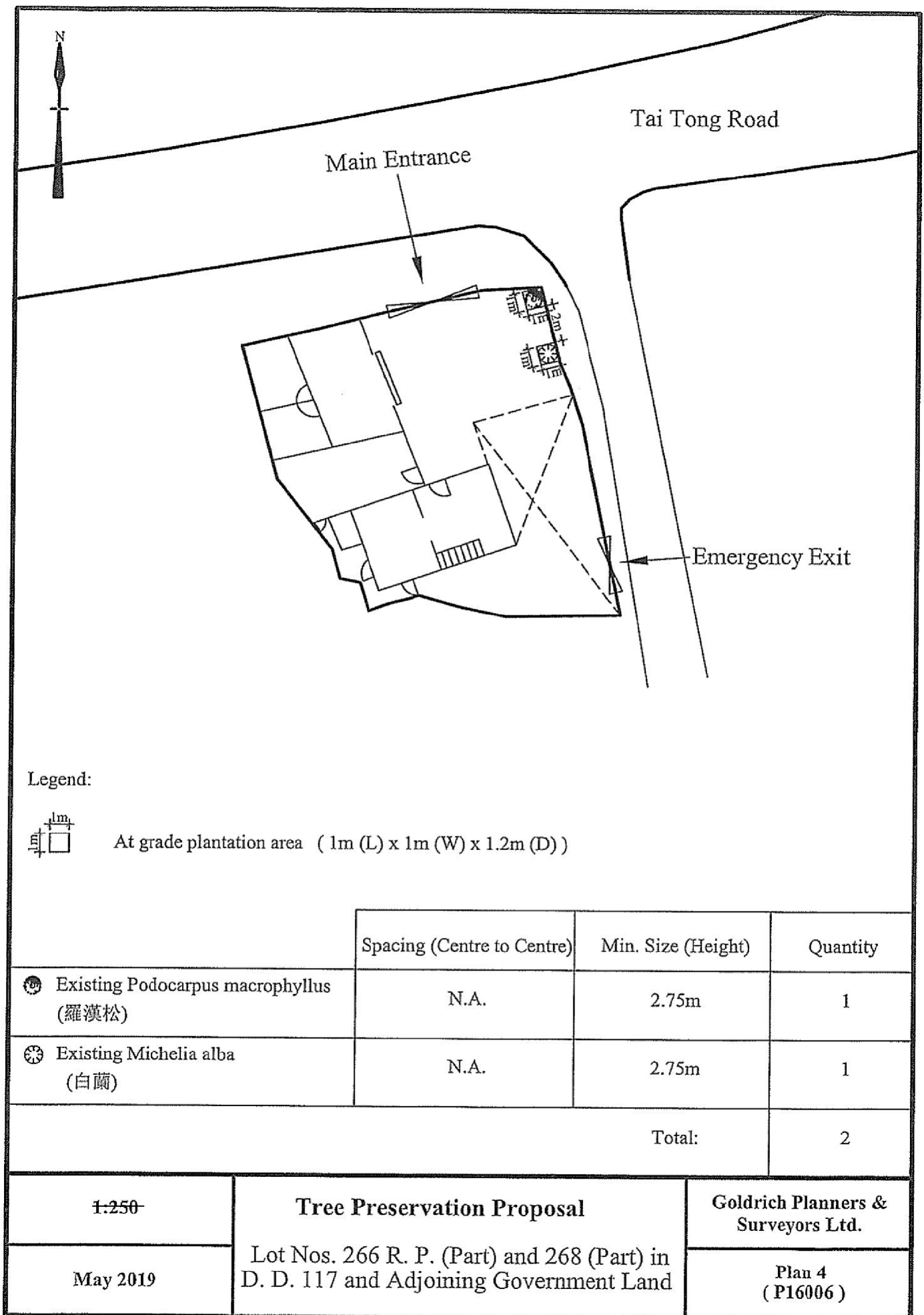
Structure	Use	Covered Area	Floor Area	Height	No. of Storeys
①	Real Estate Agency	42m <sup>2</sup>	42m <sup>2</sup>	5.4m	1
②	Local Provision Store	23m <sup>2</sup>	23m <sup>2</sup>	6.5m	1
③	Toilets	2.5m <sup>2</sup>	2.5m <sup>2</sup>	5.4m	1
④	Local Provision Store	34m <sup>2</sup>	34m <sup>2</sup>	5.4m	2
	Local Provision Store		34m <sup>2</sup>		
⑤	Ancillary Storage Area	70.5m <sup>2</sup>	70.5m <sup>2</sup>	5.4m	1
Total		<u>172m<sup>2</sup></u>	<u>206m<sup>2</sup></u>		

1:250	<b>Site Plan</b>  Lot Nos. 266 R. P. (Part) and 268 (Part) in D. D. 117 and Adjoining Government Land	Goldrich Planners & Surveyors Ltd.
May 2019		Plan 3 (P16006)

(摘錄自申請人於 31.5.2019 呈交的申請書)  
(Extract from Applicant's  
Submission of 31.5.2019)

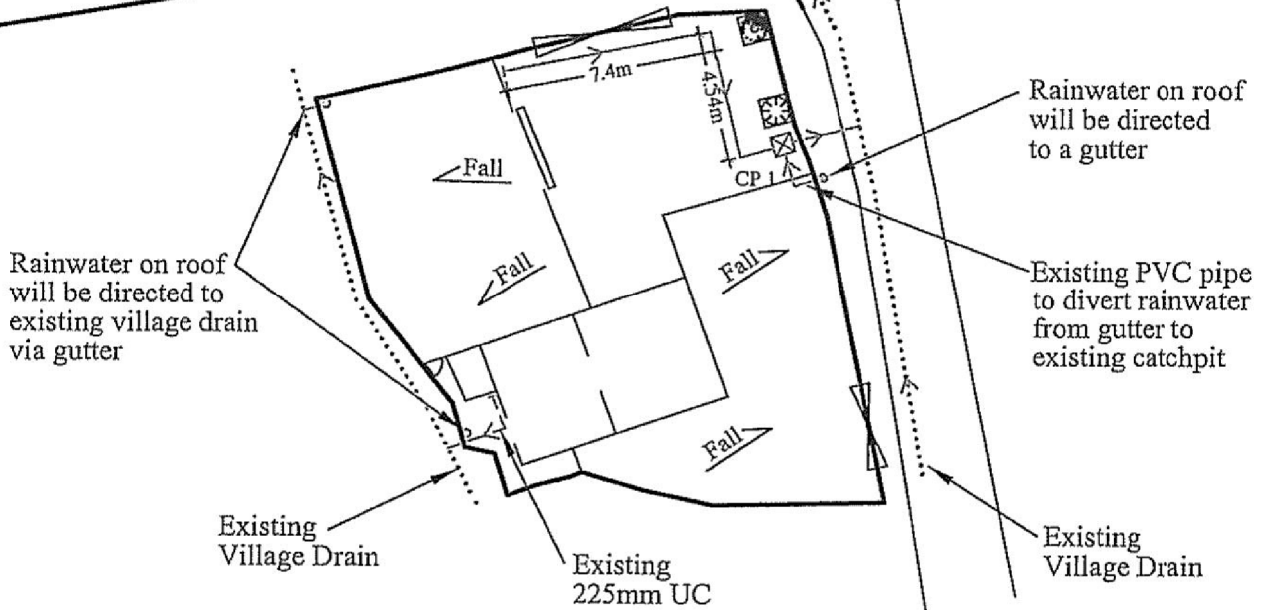
參考編號  
REFERENCE No.  
A/YL-TT/472

繪圖 DRAWING  
A-2





Tai Tong Road



### Legend

○ Existing gutter

--->--- Existing 225mm U-Channel

--->--- Existing 150mm U-Channel

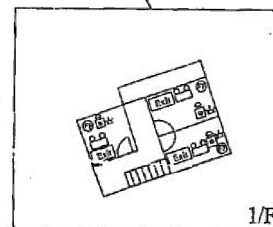
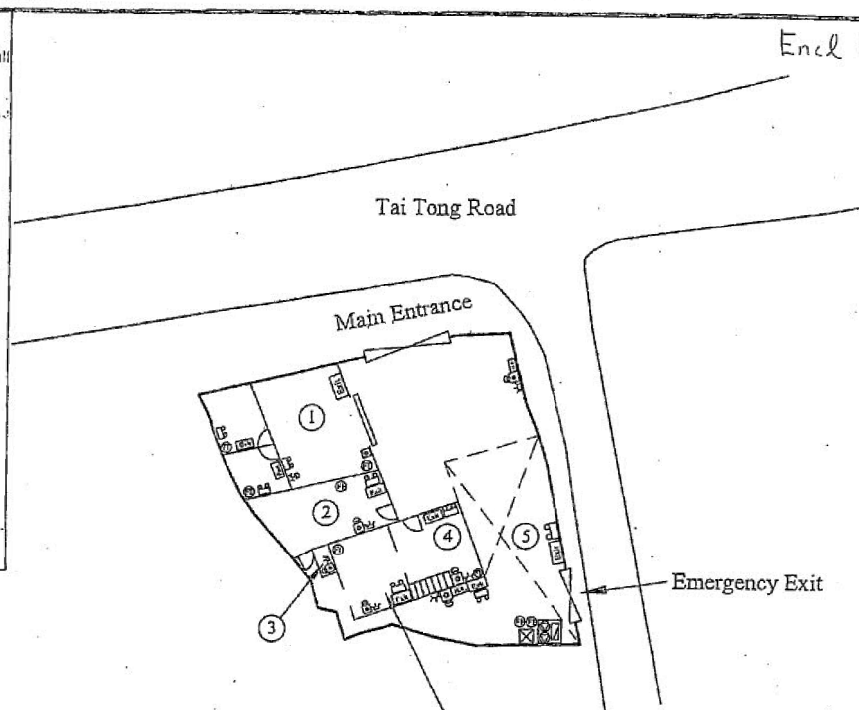
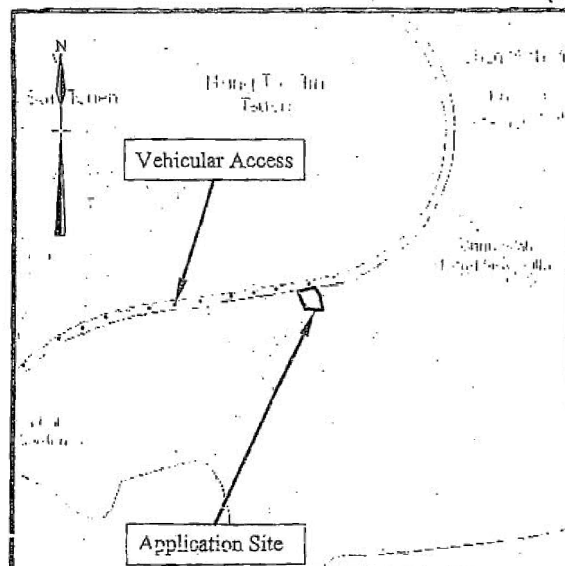
Catchpit No.	G.L.(mP.D.)	I.L.(mP.D.)
CP 1	7.2	6.88

1:250	<b>Drainage Proposal</b>	Goldrich Planners & Surveyors Ltd.
May 2019	Lot Nos. 266 R. P. (Part) and 268 (Part) in D. D. 117 and Adjoining Government Land	Plan 5 (P16006)

(摘錄自申請人於 31.5.2019 呈交的申請書)  
(Extract from Applicant's  
Submission of 31.5.2019)

參考編號  
REFERENCE No.  
AYL-TT/472

繪圖 DRAWING  
A-4



Structure	Use	Area	Height	No. of Storeys
①	Real Estate Agency	49.5m <sup>2</sup>	5.4m	1
②	Local Provisions Store	24.3m <sup>2</sup>	6.5m	1
③	Toilet	1.6m <sup>2</sup>	5.4m	1
④	Ancillary Storage Area	U/F 34.1m <sup>2</sup>	5.4m	2
	Local Provisions Store	G/F 34.1m <sup>2</sup>		
⑤	Ancillary Storage Area	78.0m <sup>2</sup>	5.4m	1
Total		221.6m <sup>2</sup>		

1-250

March 2018

### Revised Fire Service Installation Proposal

Lot Nos. 266 R.P. (Part) and 268 (Part) in  
D.D. 117 and Adjoining Government Land

#### FS NOTES:

- Sufficient emergency lighting shall be provided throughout the entire building in accordance with BS 5266: Part 1 and BS EN 1838.
- Sufficient directional and exit sign shall be provided in accordance with BS 5266: Part 1 and FSD Circular Letter 5/2008.
- Fire alarm system shall be provided throughout the entire building in accordance with BS 5839-1:2002 + A2:2008 and FSD Circular Letter 1/2009. One actuating point and one audio warning device to be located at each hose reel point. This actuating point should include facilities for fire pump start and audio/visual warning device initiation.
- A modified hose reel system supplied by 2m<sup>3</sup> FS water tank shall be provided. There shall be sufficient hose reels to ensure that every part of each building can be reached by a length of not more than 30m of hose reel tubing.
- Portable hand-operated approved appliances shall be provided as required by occupancy.
- Duplicated power supplies for all fire Service installations comprising a cable connected from electricity mains and other feed off before the main switch shall be provide.

#### REMARK:

#### Legend:

- |                    |   |
|--------------------|---|
| 5.0公斤二氧化碳<br>氣體滅火筒 | 5.0kg CO2 Gas type<br>Fire Extinguisher x11 |
| 山路燈                | Exit sign x 11                              |
| 緊急照明燈              | Emergency Light x 11                        |
| 消防水喉               | Fixed F.S. Pump x 2                         |
| 喉帶                 | Hose Reel x 2                               |
| 消防控制箱              | Fire Alarm Hosered<br>Pump Control Panel x1 |
| 水缸                 | 2m <sup>3</sup> FS Water Tank x 1           |
| 消防開燈               | Visual Fire Alarm x 10                      |
| 消防警鐘               | Fire Alarm Bell x 10                        |
| 消防接手掣              | Manual Fire Alarm Call Point x 10           |

Goldrich Planners &  
Surveyors Ltd.

Plan 6f  
(P16006)

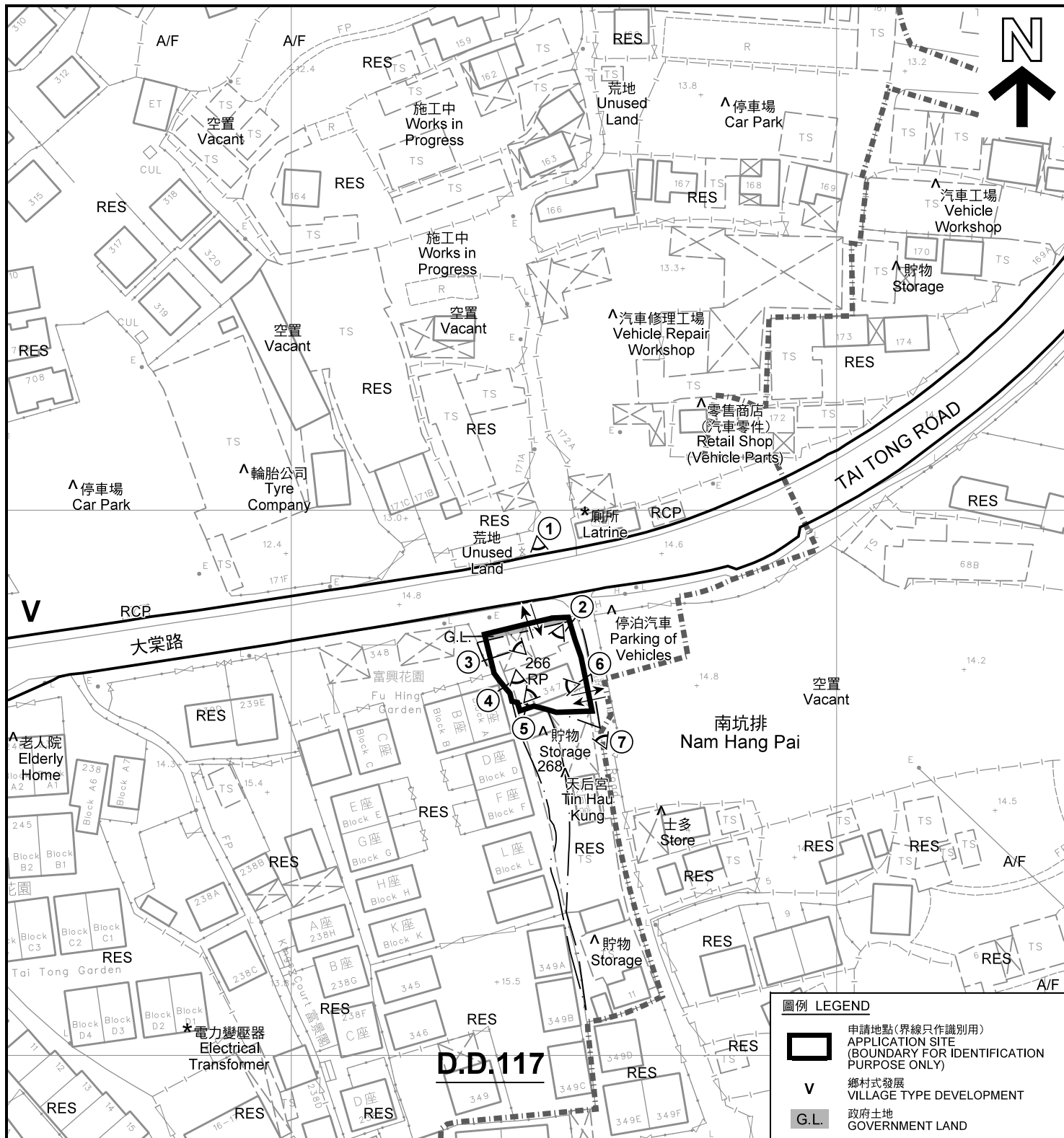
(摘錄自申請人於 31.5.2019 呈交的申請書)  
(Extract from Applicant's  
Submission of 31.5.2019)

參考編號  
REFERENCE No.  
A/YL-TT/472

繪圖 DRAWING  
A-5







註釋 Notes:

- (1) 2019年6月21日勘測的土地用途  
Land uses shown on this plan are in accordance with the land use survey conducted by the Planning Department on 21.6.2019
- (2) \* 土地用途跟1991年11月勘測的土地用途一致  
Indicates that the use is the same as that revealed by the land use survey conducted by the Planning Department in Nov 1991
- (3) ^ 土地用途跟1991年11月勘測的土地用途有別  
Indicates that the use is different from that revealed by the land use survey conducted by the Planning Department in Nov 1991

平面圖 SITE PLAN

本摘要圖於2019年7月12日擬備，所根據的資料為測量圖編號 6-NW-20C  
EXTRACT PLAN PREPARED ON 12.7.2019  
BASED ON SURVEY SHEET No. 6-NW-20C

臨時「商店及服務行業（士多連附屬儲存室及地產代理）」用途的規劃許可續期（為期3年）  
元朗大棠丈量約份第117約地段第266號餘段（部分）及第268號（部分）和毗連政府土地  
RENEWAL OF PLANNING APPROVAL FOR TEMPORARY  
"SHOP AND SERVICES (LOCAL PROVISION STORE WITH ANCILLARY STORAGE AREA AND REAL ESTATE AGENCY)" FOR A PERIOD OF 3 YEARS  
LOTS 266 RP (PART) AND 268 (PART) IN D.D.117 AND ADJOINING GOVERNMENT LAND, TAI TONG, YUEN LONG

SCALE 1:1 000 比例尺  
米 METRES 20 0 20 40 米 METRES

規劃署  
PLANNING  
DEPARTMENT



參考編號  
REFERENCE No.  
A/YL-TT/472

圖 PLAN  
A-2





圖例 LEGEND



申請地點(界線只作識別用)  
APPLICATION SITE  
(BOUNDARY FOR IDENTIFICATION  
PURPOSE ONLY)

本摘要圖於2019年6月25日擬備，所根據的資料為地政總署於2018年3月22日拍得的航攝照片編號 E036647C  
EXTRACT PLAN PREPARED ON 25.6.2019  
BASED ON AERIAL PHOTO No.  
E036647C TAKEN ON 22.3.2018  
BY LANDS DEPARTMENT

航攝照片 AERIAL PHOTO

臨時「商店及服務行業(士多連附屬儲存室及地產代理)」  
用途的規劃許可續期(為期3年)  
元朗大棠丈量約份第117約地段第266號餘段(部分)及第268號(部分)和毗連政府土地  
RENEWAL OF PLANNING APPROVAL FOR TEMPORARY  
"SHOP AND SERVICES (LOCAL PROVISION STORE WITH ANCILLARY  
STORAGE AREA AND REAL ESTATE AGENCY)" FOR A PERIOD OF 3 YEARS  
LOTS 266 RP (PART) AND 268 (PART) IN D.D.117 AND  
ADJOINING GOVERNMENT LAND, TAI TONG, YUEN LONG

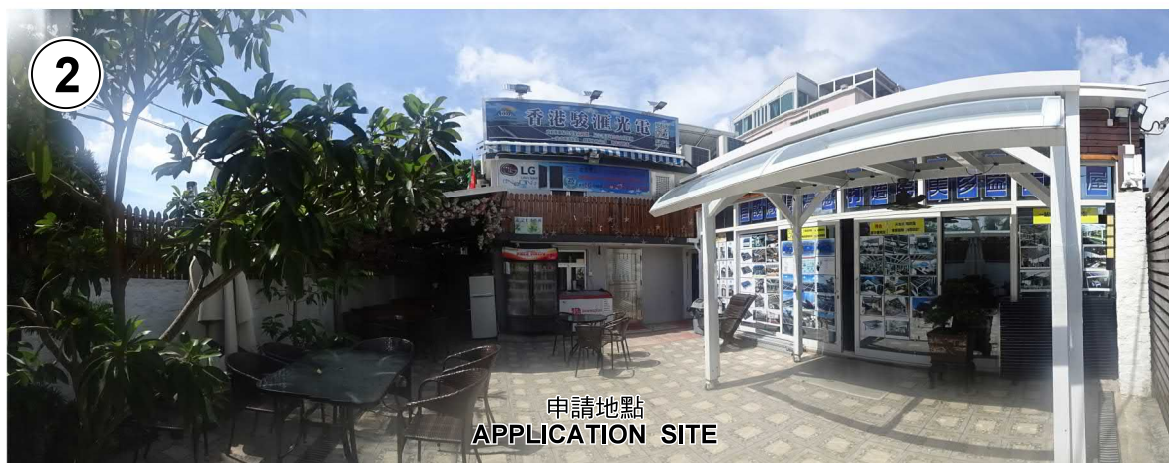
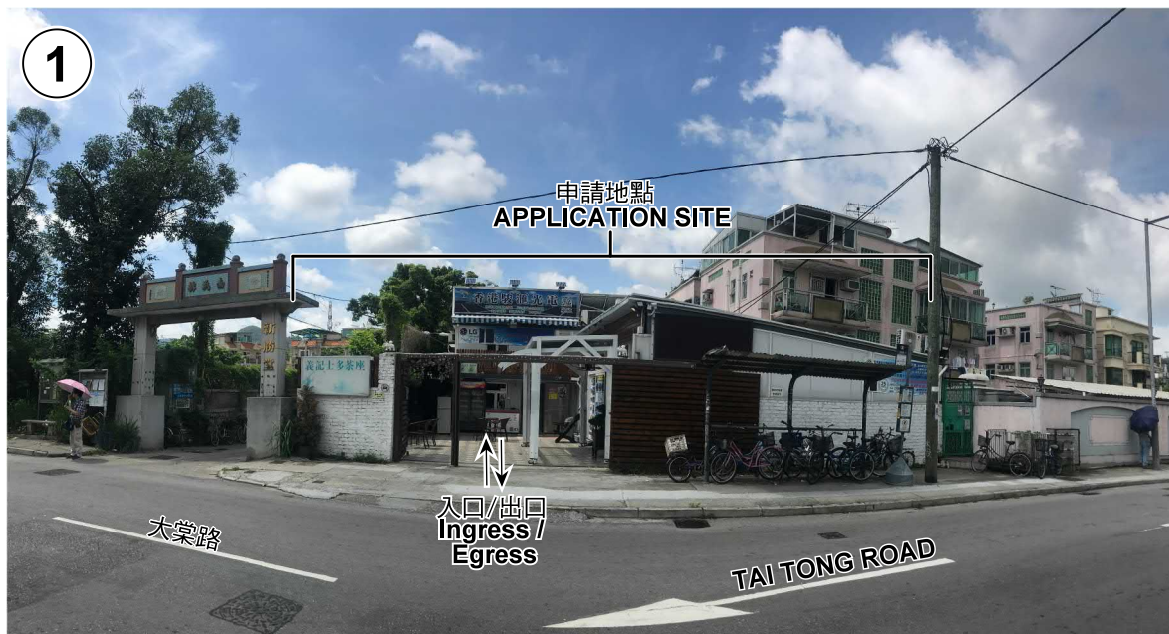
規劃署  
PLANNING  
DEPARTMENT



參考編號  
REFERENCE No.  
A/YL-TT/472

圖 PLAN  
A-3





本圖於2019年7月5日擬備，所根據的資料為攝於2019年6月27日的實地照片  
PLAN PREPARED ON 5.7.2019  
BASED ON SITE PHOTOS  
TAKEN ON 27.6.2019

### 實地照片 SITE PHOTOS

臨時「商店及服務行業（士多連附屬儲存室及地產代理）」  
用途的規劃許可續期（為期3年）  
元朗大棠丈量約份第117約地段第266號餘段（部分）及第268號（部分）和毗連政府土地  
RENEWAL OF PLANNING APPROVAL FOR TEMPORARY  
"SHOP AND SERVICES (LOCAL PROVISION STORE WITH ANCILLARY  
STORAGE AREA AND REAL ESTATE AGENCY)" FOR A PERIOD OF 3 YEARS  
LOTS 266 RP (PART) AND 268 (PART) IN D.D.117 AND  
ADJOINING GOVERNMENT LAND, TAI TONG, YUEN LONG

規劃署  
PLANNING  
DEPARTMENT



參考編號  
REFERENCE No.  
A/YL-TT/472

圖 PLAN  
A-4a





本圖於2019年7月12日擬備，所根據的資料為攝於2019年6月27日的實地照片  
PLAN PREPARED ON 12.7.2019  
BASED ON SITE PHOTOS  
TAKEN ON 27.6.2019

### 實地照片 SITE PHOTOS

臨時「商店及服務行業（士多連附屬儲存室及地產代理）」  
用途的規劃許可續期（為期3年）  
元朗大棠丈量約份第117約地段第266號餘段（部分）及第268號（部分）和毗連政府土地  
RENEWAL OF PLANNING APPROVAL FOR TEMPORARY  
"SHOP AND SERVICES (LOCAL PROVISION STORE WITH ANCILLARY  
STORAGE AREA AND REAL ESTATE AGENCY)" FOR A PERIOD OF 3 YEARS  
LOTS 266 RP (PART) AND 268 (PART) IN D.D.117 AND  
ADJOINING GOVERNMENT LAND, TAI TONG, YUEN LONG

規劃署  
PLANNING  
DEPARTMENT



參考編號  
REFERENCE No.  
A/YL-TT/472

圖 PLAN  
A-4b



申請地點界線只作識別用 APPLICATION SITE BOUNDARY FOR IDENTIFICATION PURPOSE ONLY

### 實地照片 SITE PHOTOS

臨時「商店及服務行業（士多連附屬儲存室及地產代理）」  
用途的規劃許可續期（為期3年）  
元朗大棠丈量約份第117約地段第266號餘段（部分）及第268號（部分）和毗連政府土地  
RENEWAL OF PLANNING APPROVAL FOR TEMPORARY  
"SHOP AND SERVICES (LOCAL PROVISION STORE WITH ANCILLARY  
STORAGE AREA AND REAL ESTATE AGENCY)" FOR A PERIOD OF 3 YEARS  
LOTS 266 RP (PART) AND 268 (PART) IN D.D.117 AND  
ADJOINING GOVERNMENT LAND, TAI TONG, YUEN LONG

規劃署  
PLANNING  
DEPARTMENT



參考編號  
REFERENCE No.  
A/YL-TT/472

圖 PLAN  
A-4c

本圖於2019年7月12日擬備，所根據的  
資料為攝於2019年6月27日的實地照片  
PLAN PREPARED ON 12.7.2019  
BASED ON SITE PHOTOS  
TAKEN ON 27.6.2019