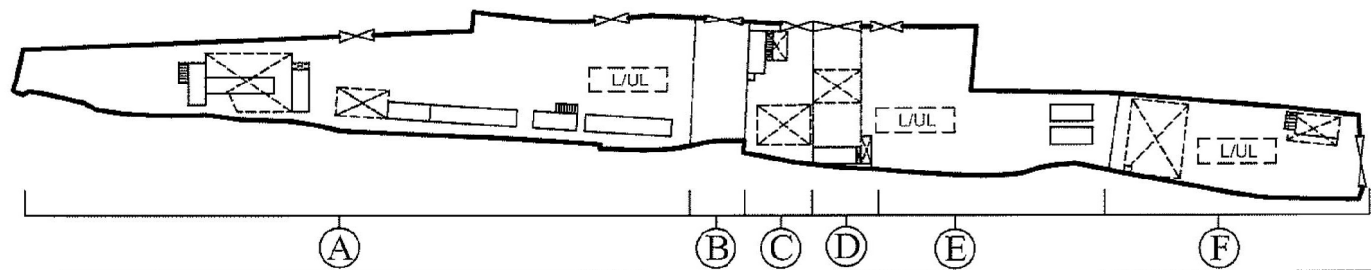
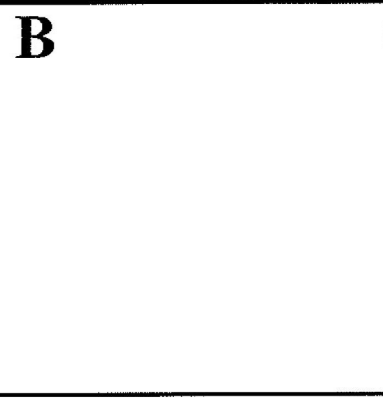
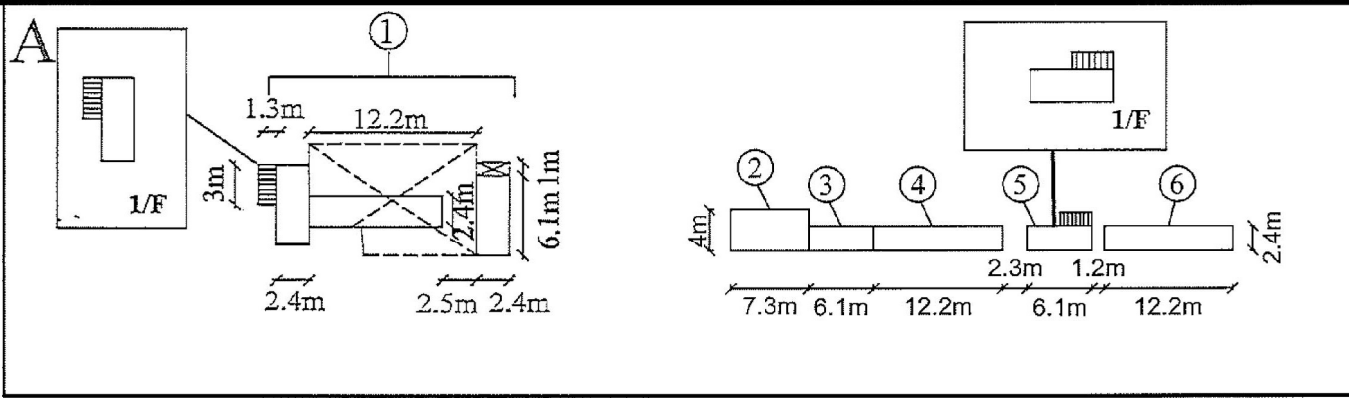


Approved from Tong Yan Sun Tsuen Outline Zoning Plan No. S/YL-TYST/12

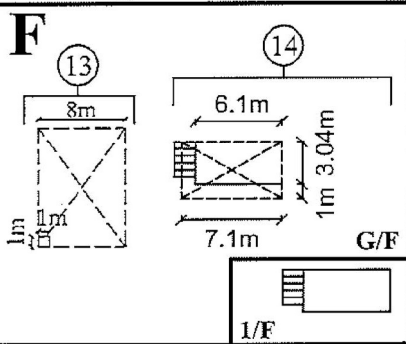
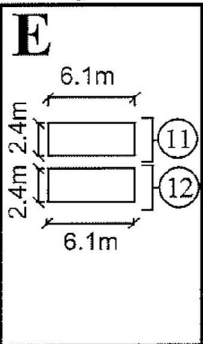
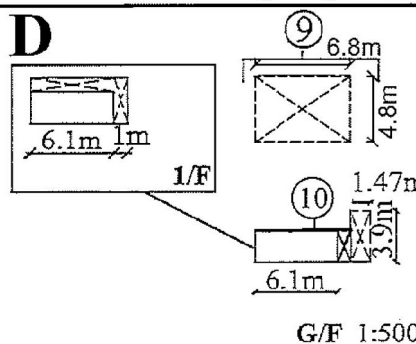
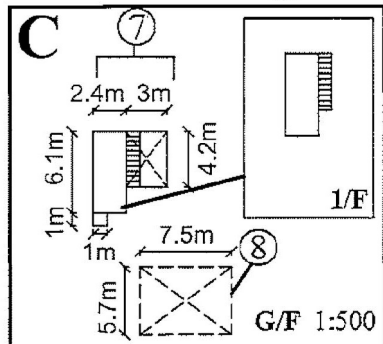
Not to Scale	Location Plan	Goldrich Planners & Surveyors Ltd.
January 2020	Lots 2357 B R. P. and 2358 R. P. in D. D. 120, Tin Liu Tsuen, Yuen Long	Plan 1

(摘錄自申請人於 16.3.2020 呈交的補充資料)
(Extract from Applicant's Supplementary Information Submitted on 16.3.2020)

參考編號 REFERENCE No. A/YL-TYST/1013	繪圖 DRAWING A-1
--	--------------------------



- Legend
- Open Shed
 - Container
 - Partition
 - Stairs
 - Compartments
 - Structures
 - Loading / Unloading Space for MGV: 11m x 3.5m



1:1000

March 2020

Layout Plan

Lots 2357 B R. P. and 2358 R. P. in D. D. 120,
Tin Liu Tsuen, Yuen Long

Goldrich Planners &
Surveyors Ltd.

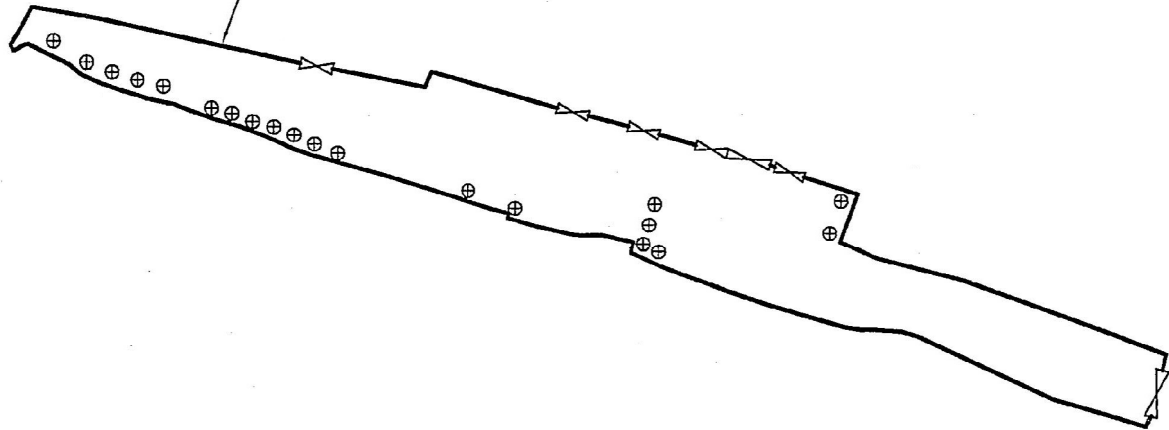
Plan 3
(P10109)

(摘錄自申請人於 18.3.2020 呈交的補充資料)
(Extract from Applicant's Supplementary
Information Submitted on 18.3.2020)

參考編號 REFERENCE No. AYL-TYST/1013	繪圖 DRAWING A-2
--	-------------------



Application Site



Legend

⊕ Existing Tree 20 nos.

1:1000

January 2020

Trees and Landscape Preservation Proposal

Lots 2357 S.B RP and 2358 RP in D. D. 120,
Tin Liu Tsuen, Yuen Long

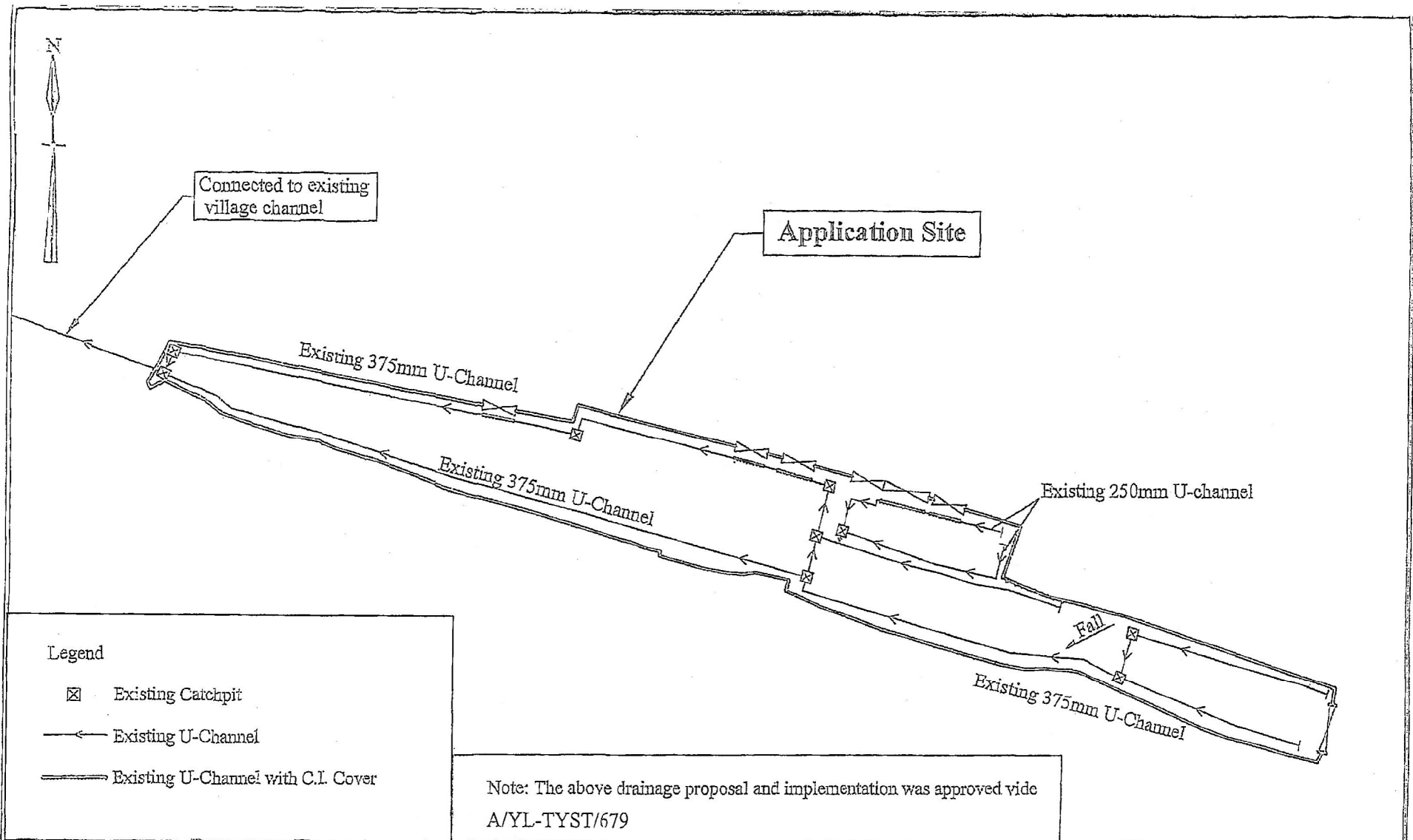
Goldrich Planners &
Surveyors Ltd.

Plan 4
(P10109)

(摘錄自申請人於 13.3.2020 呈交的申請書)
(Extract from Applicant's
Submission of 13.3.2020)

參考編號
REFERENCE No.
A/YL-TYST/1013

繪圖 DRAWING
A-3



1:750

January 2020

Approved Drainage Proposal

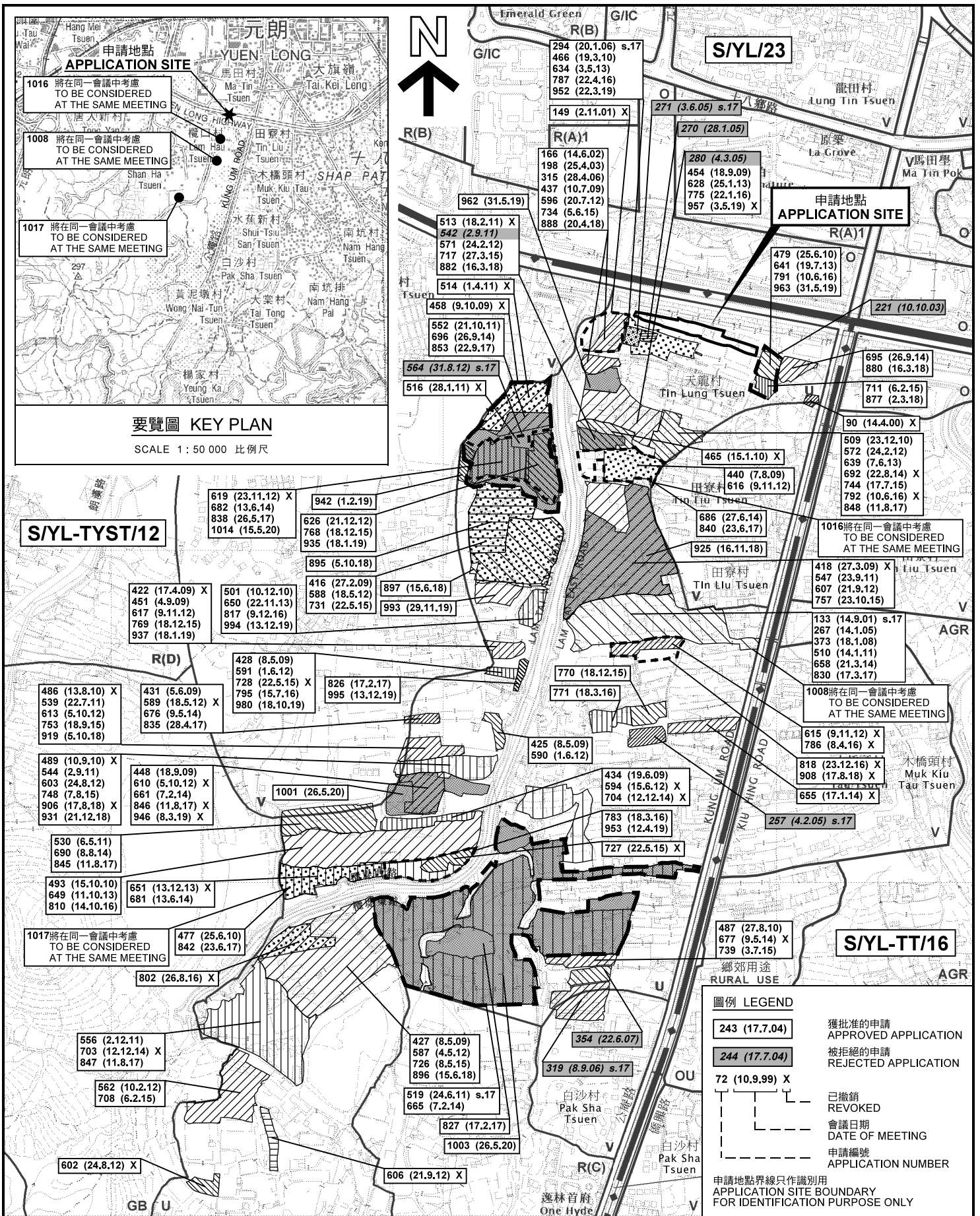
Lots 2357 B R. P. and 2358 R. P. in D. D. 120,
Tin Liu Tsuen, Yuen Long

Goldrick Planners &
Surveyors Ltd.

Plan 5
(P10109)

(摘錄自申請人於 13.3.2020 呈交的申請書)
(Extract from Applicant's
Submission of 13.3.2020)

參考編號 REFERENCE No. A/YL-TYST/1013	繪圖 DRAWING A-4
---	-------------------



要覽圖 KEY PLAN
SCALE 1: 50 000 比例尺

圖例 LEGEND

- 243 (17.7.04) 獲批准的申請
APPROVED APPLICATION
- 244 (17.7.04) 被拒絕的申請
REJECTED APPLICATION
- 72 (10.9.99) X 已撤銷
REVOKED
- 會議日期
DATE OF MEETING
- 申請編號
APPLICATION NUMBER

申請地點界線只作識別用
APPLICATION SITE BOUNDARY
FOR IDENTIFICATION PURPOSE ONLY

本摘要圖於2020年6月3日擬備，
所根據的資料為於2018年9月4日
核准的分區計劃大綱圖編號 S/YL-TYST/12
EXTRACT PLAN PREPARED ON 3.6.2020
BASED ON OUTLINE ZONING PLAN No.
S/YL-TYST/12 APPROVED ON 4.9.2018

位置圖及同類申請 LOCATION PLAN WITH SIMILAR APPLICATIONS

臨時露天存放建築材料(碎石、磚、沙、
袋裝水泥和油漆)連汽車維修工場(為期3年)
元朗田寮村丈量約份第120約地段第2357號B分段餘段及第2358號餘段
TEMPORARY OPEN STORAGE OF CONSTRUCTION MATERIALS
(GRAVELS, BRICKS, SAND, CEMENT IN BAGS AND PAINTS) WITH
VEHICLE REPAIR WORKSHOP FOR A PERIOD OF 3 YEARS
LOTS 2357 S.B RP AND 2358 RP IN D.D.120,
TIN LIU TSUEN, YUEN LONG

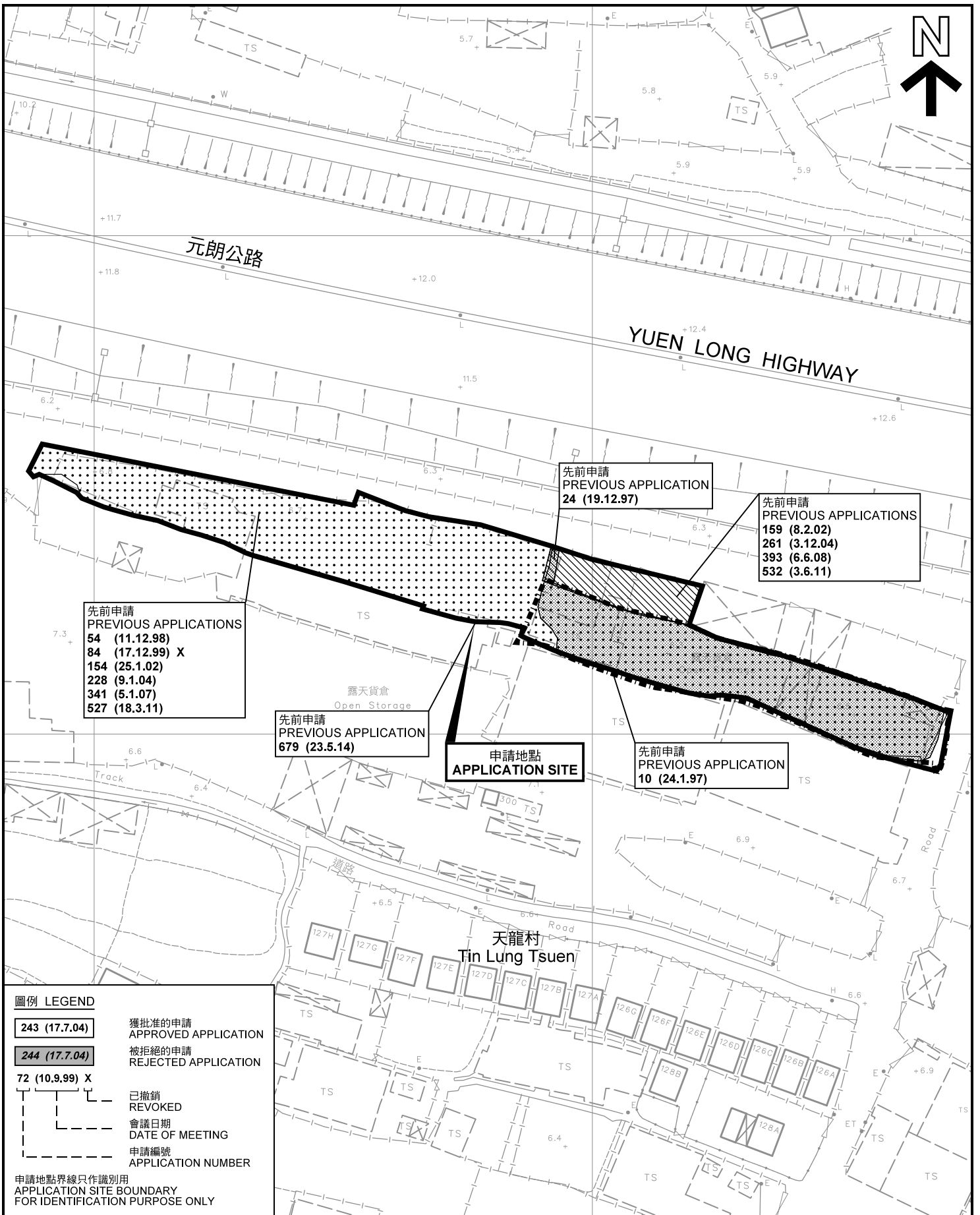
SCALE 1: 7 500 比例尺

米 100 0 100 200 300 米
METRES

規劃署
PLANNING
DEPARTMENT

參考編號
REFERENCE No. **A/YL-TYST/1013**

圖 PLAN
A-1a



先前申請圖 PREVIOUS APPLICATIONS PLAN

臨時露天存放建築材料(碎石、磚、沙、袋裝水泥和油漆)連汽車維修工場(為期3年)
元朗田寮村丈量約份第120約地段第2357號B分段餘段及第2358號餘段
TEMPORARY OPEN STORAGE OF CONSTRUCTION MATERIALS WITH VEHICLE REPAIR WORKSHOP FOR A PERIOD OF 3 YEARS
LOTS 2357 S.B RP AND 2358 RP IN D.D. 120, TIN LIU TSUEN, YUEN LONG
SCALE 1 : 1 000 比例尺

規劃署
PLANNING DEPARTMENT

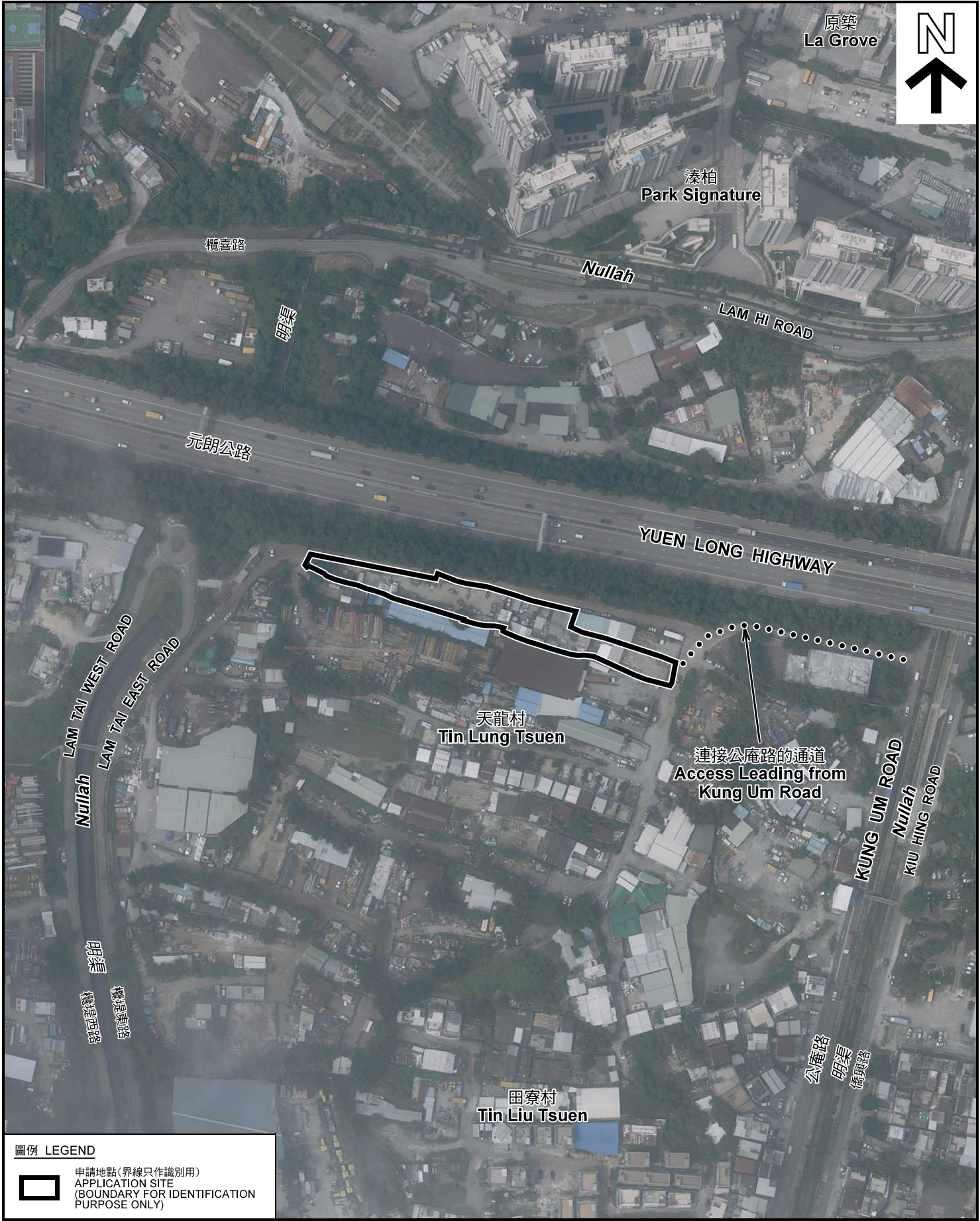


參考編號
REFERENCE No.
A/YL-TYST/1013

圖 PLAN
A-1b

本摘要圖於2020年5月26日擬備，所根據的資料為測量圖編號 6-NW-14D
EXTRACT PLAN PREPARED ON 26.5.2020 BASED ON SURVEY SHEET No. 6-NW-14D

米 METRES 20 0 20 40 米 METRES



原築
La Grove



漆柏
Park Signature

橫喜路

Nullah

LAM HI ROAD

元朗公路

YUEN LONG HIGHWAY

LAM TAI WEST ROAD
LAM TAI EAST ROAD


天龍村
Tin Lung Tsuen

連接公庵路的通道
Access Leading from
Kung Um Road

KUNG UM ROAD
KIU HING ROAD

田寮村
Tin Liu Tsuen

圖例 LEGEND

 申請地點 (界線只作識別用)
APPLICATION SITE
(BOUNDARY FOR IDENTIFICATION
PURPOSE ONLY)

本摘要圖於2020年5月25日擬備，所根據的資料為地政總署於2019年9月12日拍得的航攝照片編號 E063460C
EXTRACT PLAN PREPARED ON 25.5.2020
BASED ON AERIAL PHOTO No.
E063460C TAKEN ON 12.9.2019
BY LANDS DEPARTMENT

航攝照片 AERIAL PHOTO

臨時露天存放建築材料(碎石、磚、沙、袋裝水泥和油漆)連汽車維修工場(為期3年)
元朗田寮村丈量約份第120約地段第2357號B分段餘段及第2358號餘段
TEMPORARY OPEN STORAGE OF CONSTRUCTION MATERIALS (GRAVELS, BRICKS, SAND, CEMENT IN BAGS AND PAINTS) WITH VEHICLE REPAIR WORKSHOP FOR A PERIOD OF 3 YEARS
LOTS 2357 S.B RP AND 2358 RP IN D.D.120,
TIN LIU TSUEN, YUEN LONG

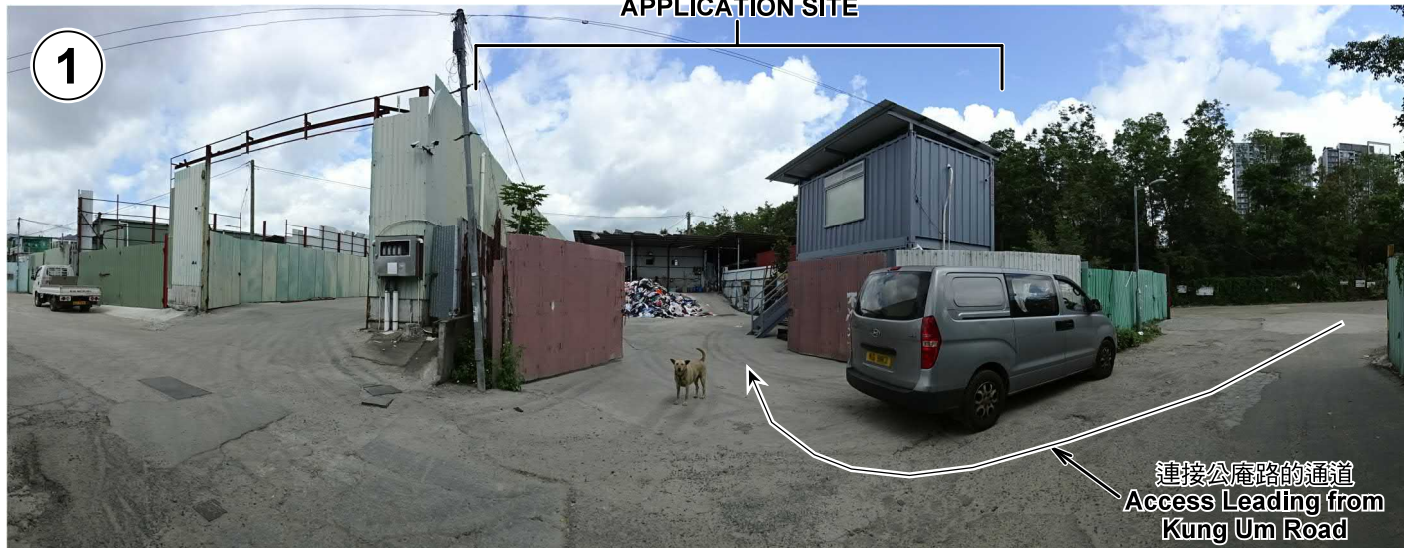
規劃署
PLANNING
DEPARTMENT



參考編號
REFERENCE No.
A/YL-TYST/1013

圖 PLAN
A-3

申請地點
APPLICATION SITE



1

連接公庵路的通道
Access Leading from
Kung Um Road

申請地點
APPLICATION SITE



2

申請地點
APPLICATION SITE



3

本圖於2020年5月25日擬備，所根據的資料為攝於2020年5月7日的實地照片
PLAN PREPARED ON 25.5.2020
BASED ON SITE PHOTOS
TAKEN ON 7.5.2020

實地照片 SITE PHOTOS
臨時露天存放建築材料(碎石、磚、沙、袋裝水泥和油漆)連汽車維修工場(為期3年)
元朗田寮村丈量約份第120約地段第2357號B分段餘段及第2358號餘段
TEMPORARY OPEN STORAGE OF CONSTRUCTION MATERIALS
(GRAVELS, BRICKS, SAND, CEMENT IN BAGS AND PAINTS) WITH
VEHICLE REPAIR WORKSHOP FOR A PERIOD OF 3 YEARS
LOTS 2357 S.B RP AND 2358 RP IN D.D.120,
TIN LIU TSUEN, YUEN LONG

規劃署
PLANNING
DEPARTMENT



參考編號
REFERENCE No.
A/YL-TYST/1013

圖 PLAN
A-4a



申請地點
APPLICATION SITE



申請地點
APPLICATION SITE



申請地點
APPLICATION SITE

本圖於2020年5月25日擬備，所根據的資料為攝於2020年5月7日的實地照片
PLAN PREPARED ON 25.5.2020
BASED ON SITE PHOTOS
TAKEN ON 7.5.2020

實地照片 SITE PHOTOS

臨時露天存放建築材料(碎石、磚、沙、袋裝水泥和油漆)連汽車維修工場(為期3年)
元朗田寮村丈量約份第120約地段第2357號B分段餘段及第2358號餘段
TEMPORARY OPEN STORAGE OF CONSTRUCTION MATERIALS (GRAVELS, BRICKS, SAND, CEMENT IN BAGS AND PAINTS) WITH VEHICLE REPAIR WORKSHOP FOR A PERIOD OF 3 YEARS
LOTS 2357 S.B RP AND 2358 RP IN D.D.120,
TIN LIU TSUEN, YUEN LONG

規劃署
**PLANNING
DEPARTMENT**



參考編號
REFERENCE No.
A/YL-TYST/1013

圖 PLAN
A-4b



申請地點
APPLICATION SITE



申請地點
APPLICATION SITE

實地照片 SITE PHOTOS

臨時露天存放建築材料(碎石、磚、沙、袋裝水泥和油漆)連汽車維修工場(為期3年)
元朗田寮村丈量約份第120約地段第2357號B分段餘段及第2358號餘段
TEMPORARY OPEN STORAGE OF CONSTRUCTION MATERIALS
(GRAVELS, BRICKS, SAND, CEMENT IN BAGS AND PAINTS) WITH
VEHICLE REPAIR WORKSHOP FOR A PERIOD OF 3 YEARS
LOTS 2357 S.B RP AND 2358 RP IN D.D. 120,
TIN LIU TSUEN, YUEN LONG

規劃署
PLANNING
DEPARTMENT



本圖於2020年5月25日擬備，所根據的資料為攝於2020年5月7日的實地照片
PLAN PREPARED ON 25.5.2020
BASED ON SITE PHOTOS
TAKEN ON 7.5.2020

參考編號
REFERENCE No.
A/YL-TYST/1013

圖 PLAN
A-4c