

<p>Project 項目名稱: Proposed Temporary Warehouse and Open Storage for Storage of Recyclable Materials (Plastic and Metal) with Ancillary Workshop for a Period of 3 Years at Lots 2704 S.A & S.B (Part), 2707, 2708, 2709, 2710, 2711 in D.D. 120, Lots 1638, 1639 (Part), 1640 (Part), 1671, 1672, 1673 (Part), 1674 (Part), 1676 S.A & B (Part), 1668 (Part), 1669 (Part) in D.D.121 and Adjoining Government Land, Shan Ha Tsuen, Yuen Long, N.T.</p>	<p>Drawing Title 圖目: Location Plan</p>	<p>Remarks 備註: ●●● Vehicular access leading from Shan Ha Road</p>
	<p>Drawing No. 圖號: Figure 2</p>	<p>Scale 比例: 1:7500</p>

(摘錄自申請人於 22.10.2020 提交的申請書)
(Extract from Applicant's Submission of 22.10.2020)

<p>參考編號 REFERENCE No. AYL-TYST/1058</p>	<p>繪圖 DRAWING A-1</p>
---	---------------------------

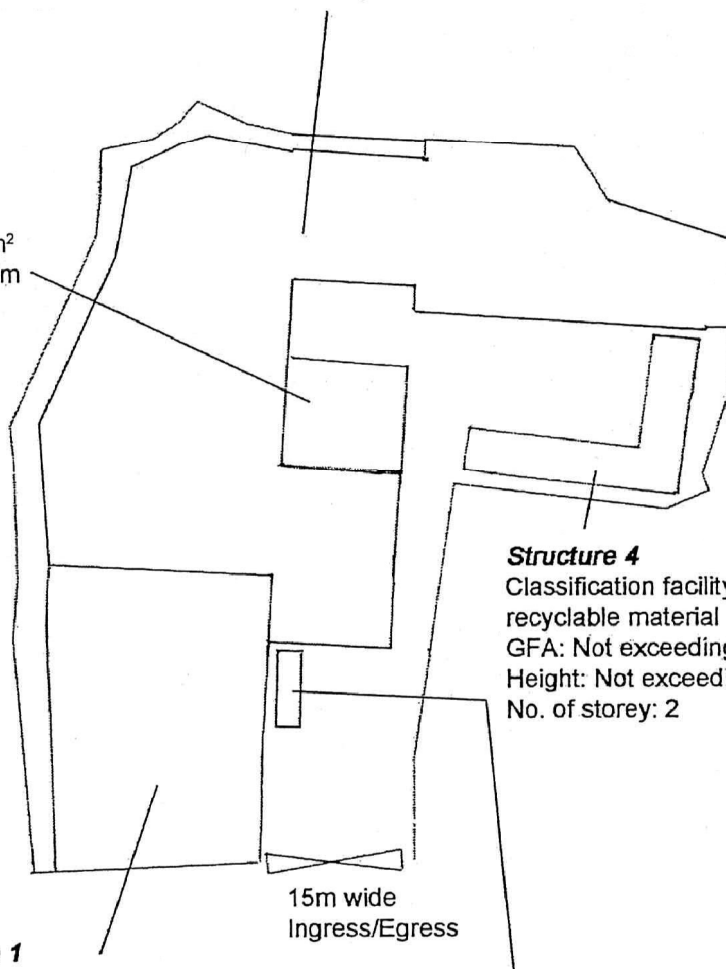


Structure 3

Site office
 GFA: Not exceeding 196m²
 Height: Not exceeding 7.5m
 No. of storey: 2

Structure 2

Open shed for storage of
 recyclable material
 (plastic and metal)
 GFA: Not exceeding 3,330m²
 Height: Not exceeding 7.5m
 No. of storey: 1



Structure 1

Warehouse for storage of
 recyclable material
 (plastic and metal)
 GFA: Not exceeding 908m²
 Height: Not exceeding 6.5m
 No. of storey: 1

Structure 4

Classification facility for
 recyclable material
 GFA: Not exceeding 290m²
 Height: Not exceeding 7.5m
 No. of storey: 2

15m wide
 Ingress/Egress

One loading/unloading bay
 11m x 3.5m for medium goods
 vehicle

<p>Project 項目名稱: Proposed Temporary Warehouse and Open Storage for Storage of Recyclable Materials (Plastic and Metal) with Ancillary Workshop for a Period of 3 Years at Lots 2704 S.A & S.B (Part), 2707, 2708, 2709, 2710, 2711 in D.D. 120, Lots 1638, 1639 (Part), 1640 (Part), 1671, 1672, 1673 (Part), 1674 (Part), 1676 S.A & B (Part), 1668 (Part), 1669 (Part) in D.D.121 and Adjoining Government Land, Shan Ha Tsuen, Yuen Long, N.T.</p>	<p>Drawing Title 圖名: Proposed Layout Plan</p>	<p>Remarks 備註:</p>
	<p>Drawing No. 圖號: Figure 3</p>	<p>Scale 比例: 1:1000</p>

(摘錄自申請人於 22. 10. 2020 提交的申請書)
 (Extract from Applicant's
 Submission of 22.10.2020)

<p>參考編號 REFERENCE No. A/YL-TYST/1058</p>	<p>繪圖 DRAWING A-2</p>
--	------------------------------------



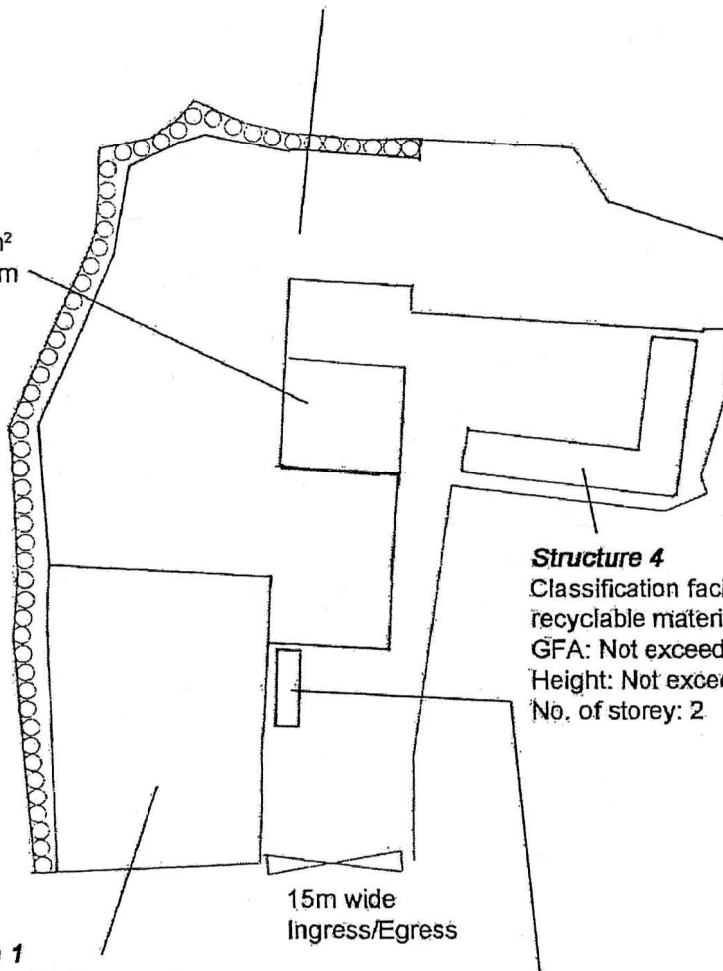
Tree	Approximate Height	Spacing
○ Existing trees to be preserved	4m to 6m	3m to 4m

Structure 3

Site office
 GFA: Not exceeding 196m²
 Height: Not exceeding 7.5m
 No. of storey: 2

Structure 2

Open shed for storage of recyclable material (plastic and metal)
 GFA: Not exceeding 3,330m²
 Height: Not exceeding 7.5m
 No. of storey: 1



Structure 4

Classification facility for recyclable material
 GFA: Not exceeding 290m²
 Height: Not exceeding 7.5m
 No. of storey: 2

Structure 1

Warehouse for storage of recyclable material (plastic and metal)
 GFA: Not exceeding 908m²
 Height: Not exceeding 6.5m
 No. of storey: 1

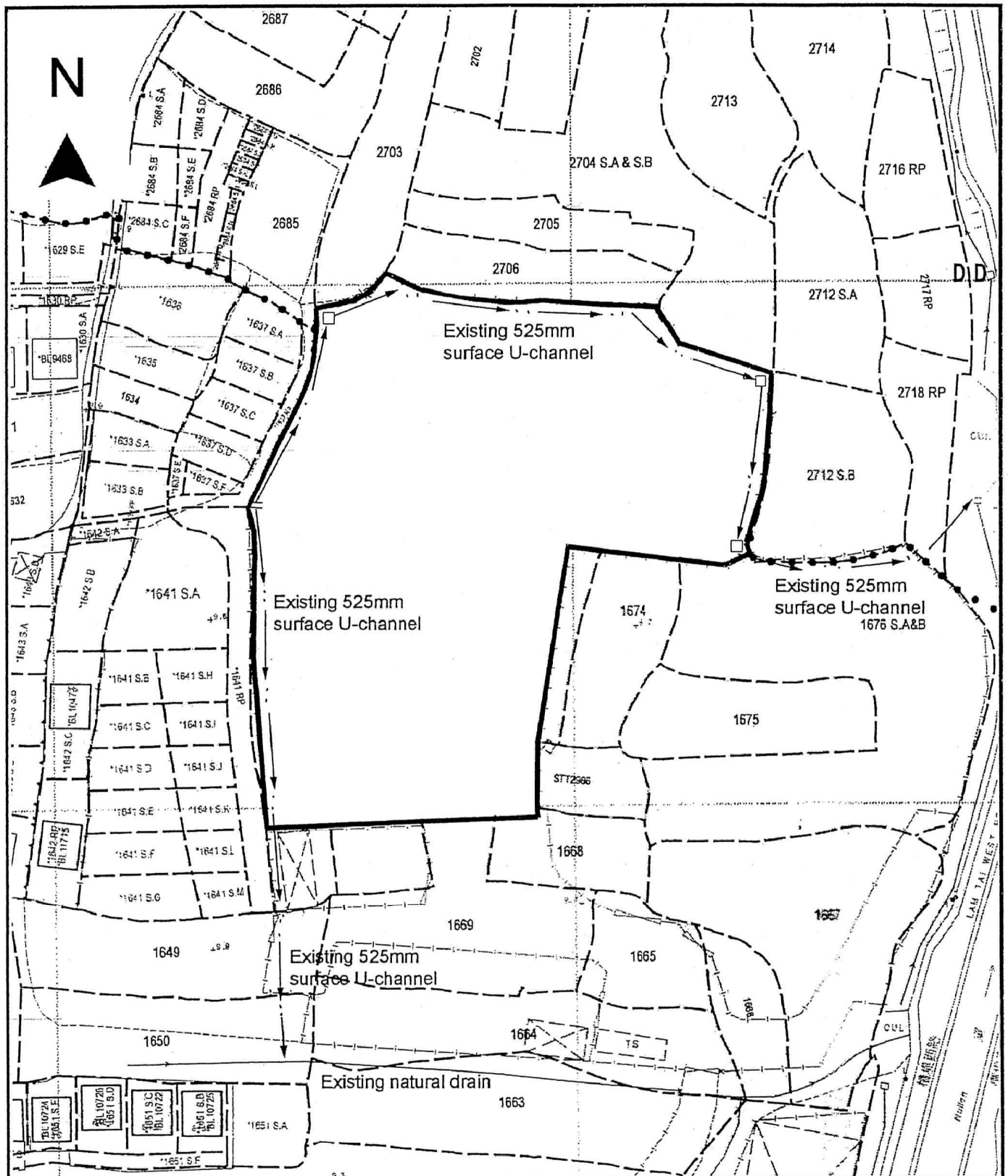
15m wide Ingress/Egress

One loading/unloading bay
 11m x 3.5m for medium goods vehicle

Project 項目名稱: Proposed Temporary Warehouse and Open Storage for Storage of Recyclable Materials (Plastic and Metal) with Ancillary Workshop for a Period of 3 Years at Lots 2704 S.A & S.B (Part), 2707, 2708, 2709, 2710, 2711 in D.D. 120, Lots 1638, 1639 (Part), 1640 (Part), 1671, 1672, 1673 (Part), 1674 (Part), 1676 S.A & B (Part), 1668 (Part), 1669 (Part) in D.D.121 and Adjoining Government Land, Shan Ha Tsuen, Yuen Long, N.T.	Drawing Title 圖目: Proposed Landscape & Tree Preservation Plan	Remarks 備註: Scale 比例: 1:1000
	Drawing No. 圖號: Figure 4	

(摘錄自申請人於 22. 10. 2020 提交的申請書)
 (Extract from Applicant's Submission of 22.10.2020)

參考編號 REFERENCE No. A/YL-TYST/1058	繪圖 DRAWING A-3
--	--------------------------

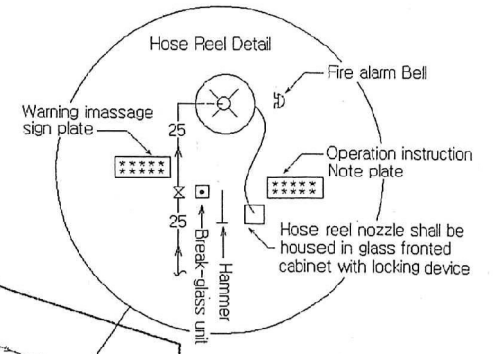


<p>Project 項目名稱: Proposed Temporary Warehouse and Open Storage for Storage of Recyclable Materials (Plastic and Metal) with Ancillary Workshop for a Period of 3 Years at Lots 2704 S.A & S.B (Part), 2707, 2708, 2709, 2710, 2711 in D.D. 120, Lots 1638, 1639 (Part), 1640 (Part), 1671, 1672, 1673 (Part), 1674 (Part), 1676 S.A & B (Part), 1668 (Part), 1669 (Part) in D.D.121 and Adjoining Government Land, Shan Ha Tsuen, Yuen Long, N.T.</p>	<p>Drawing Title 圖名: As-built Drainage Plan</p> <p>Drawing No. 圖號: Figure 5</p>	<p>Remarks 備註: This drainage plan was accepted for compliance with planning conditions (g) & (h) for previous planning permission No. AYL-TYST/416</p> <p>Scale 比例: 4:1000</p>
---	---	--

(摘錄自申請人於 22. 10. 2020 提交的申請書)
(Extract from Applicant's Submission of 22.10.2020)

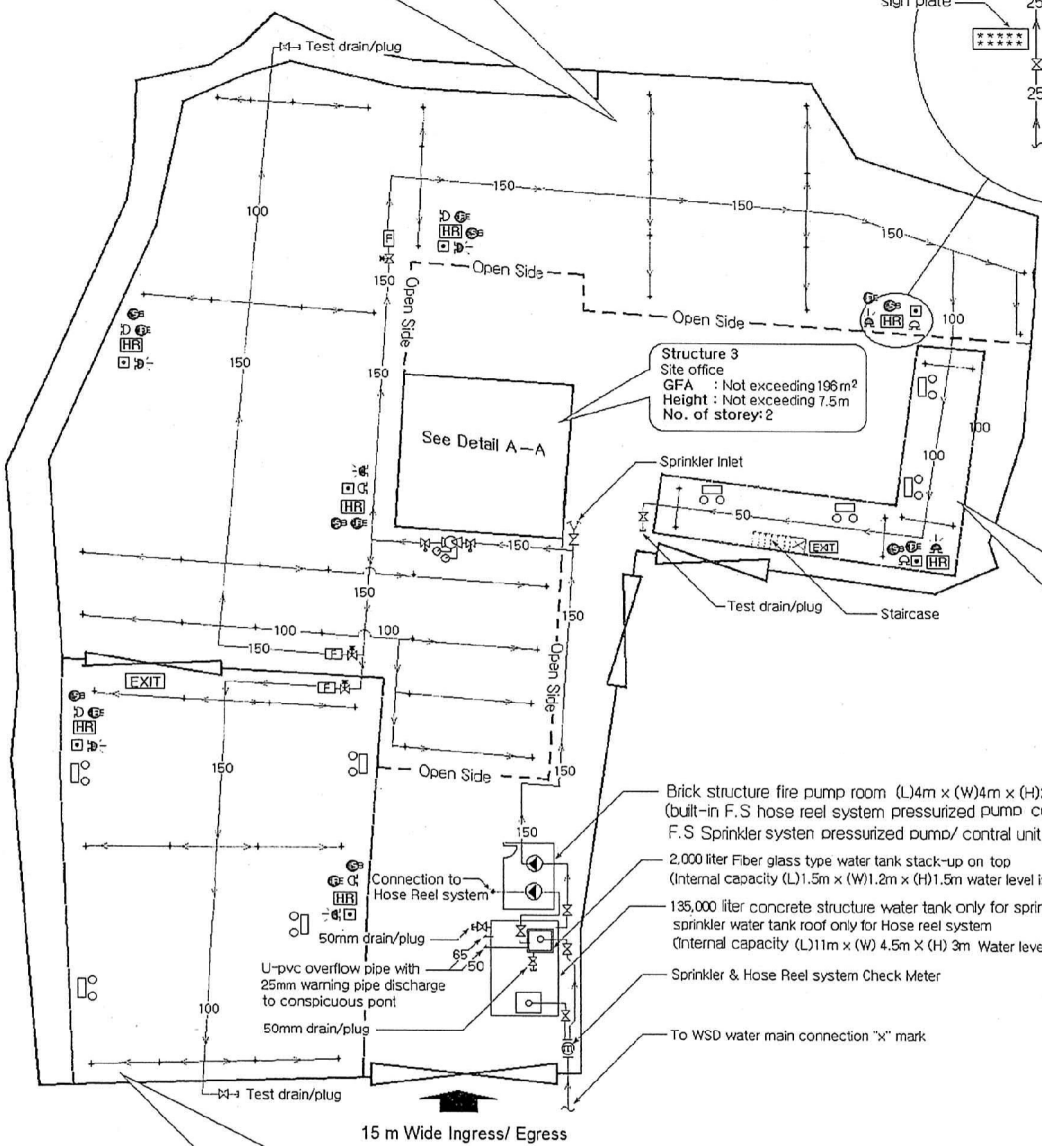
<p>參考編號 REFERENCE No. AYL-TYST/1058</p>	<p>繪圖 DRAWING A-4</p>
--	----------------------------------

Structure 2
 Open shed for storage of recyclable material (plastic and metal)
 GFA : Not exceeding 3,330m²
 Height : Not exceeding 7.5m
 No. of storey: 1
 Installed 68° sprinkler head 271 Nos. Each sprinkler head coverage not less than 12 square metres



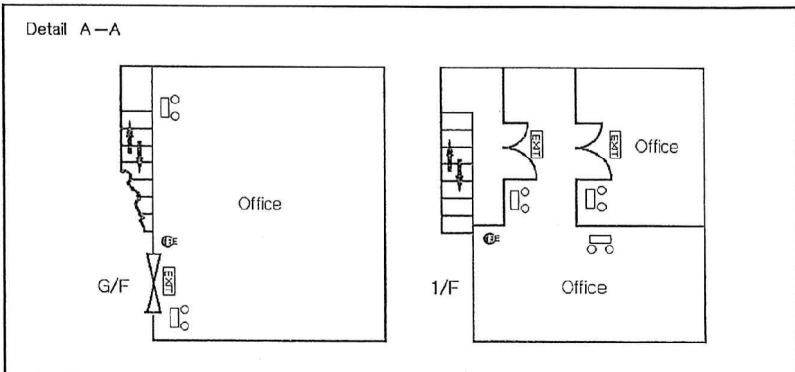
Structure 3
 Site office
 GFA : Not exceeding 196m²
 Height : Not exceeding 7.5m
 No. of storey: 2

Structure 4
 Classification facility for recyclable material
 GFA : Not exceeding 260m²
 Height : Not exceeding 7.5m
 No. of storey: 2
 The aggregate area of openable windows 18.125 square metres not less than 6.25 % of the floor area of structure and Installed 68° sprinkler head 24 Nos. Each sprinkler head coverage not less than 12 square metres



- Brick structure fire pump room (L)4m x (W)4m x (H)2.5m (built-in F.S hose reel system pressurized pump/ control unit devices and F.S Sprinkler system pressurized pump/ control unit devices)
- 2,000 liter Fiber glass type water tank stack-up on top (Internal capacity (L)1.5m x (W)1.2m x (H)1.5m water level is 1.2m)
- 135,000 liter concrete structure water tank only for sprinkler system sprinkler water tank roof only for Hose reel system (Internal capacity (L)11m x (W) 4.5m x (H) 3m Water level is 2.8m)
- Sprinkler & Hose Reel system Check Meter
- To WSD water main connection "X" mark

Structure 1
 Warehouse for storage of recyclable material (plastic and metal)
 GFA : Not exceeding 908m²
 Height : Not exceeding 6.5m
 No. of storey: 1
 The aggregate area of openable windows 56.75 square metres not less than 6.25 % of the floor area of structure and installed 68° sprinkler head 76 Nos. Each sprinkler head coverage not less than 12 square metres



Legends :

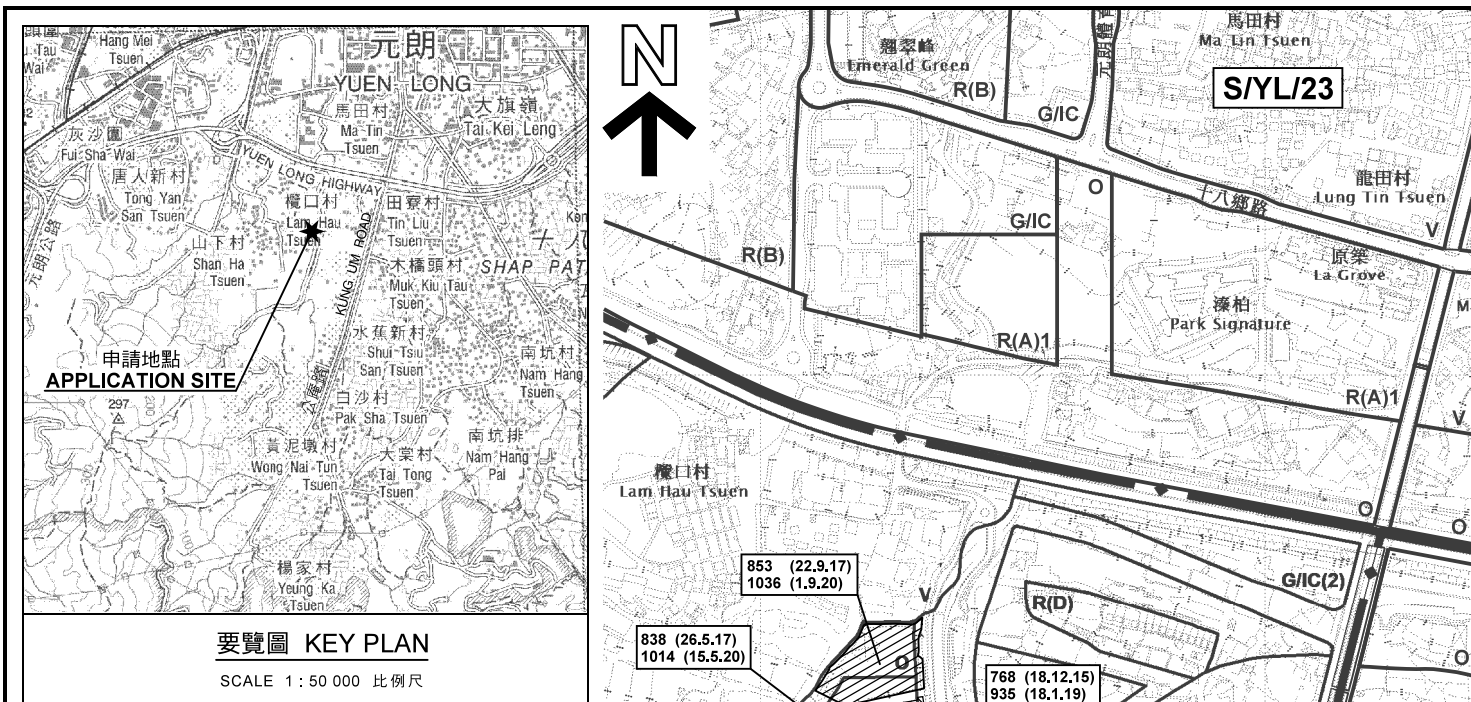
Hose Reel	Exit Sign	5 Kg Co2 Gase type Fire Extinguisher	Press switch	Non-return valvae	Proving pipe assembly
Manual Fire Alarm call point	Water Alarm bell	Sand Bucket	Control /Alarm valve	Gate valve (normal close)	Flow meter
Fire Alarm bell	Visual Fire Alarm	Press gauge	Emergency Light	Gate valve (with monitoring)	15 Kw Sprinkler pump
			Subsidiary valve/Flow switch	Sprinkler Inlet	2.2 Kw Jockey pump/ Hose reel pump

Application Address : Lots 2704 S.A & S.B(Part), 2707,2708, 2709,2710, 2711 In D.D.120 and Lots 1638,1639 (Part),1640(Part),1668 (Part),1669(Part),1671,1672,1673(Part), 1674 (Part),1676 S.A & B (Part) In D.D.121 Shan Ha Tsuen, Yuen Long, N.T.

Drawing Title: Fire Service Installation Layout Plan Drawing No. LOP/705m/FS Scale: 1:700 Drawing by :K.W.Lee Date : 7 June 2018

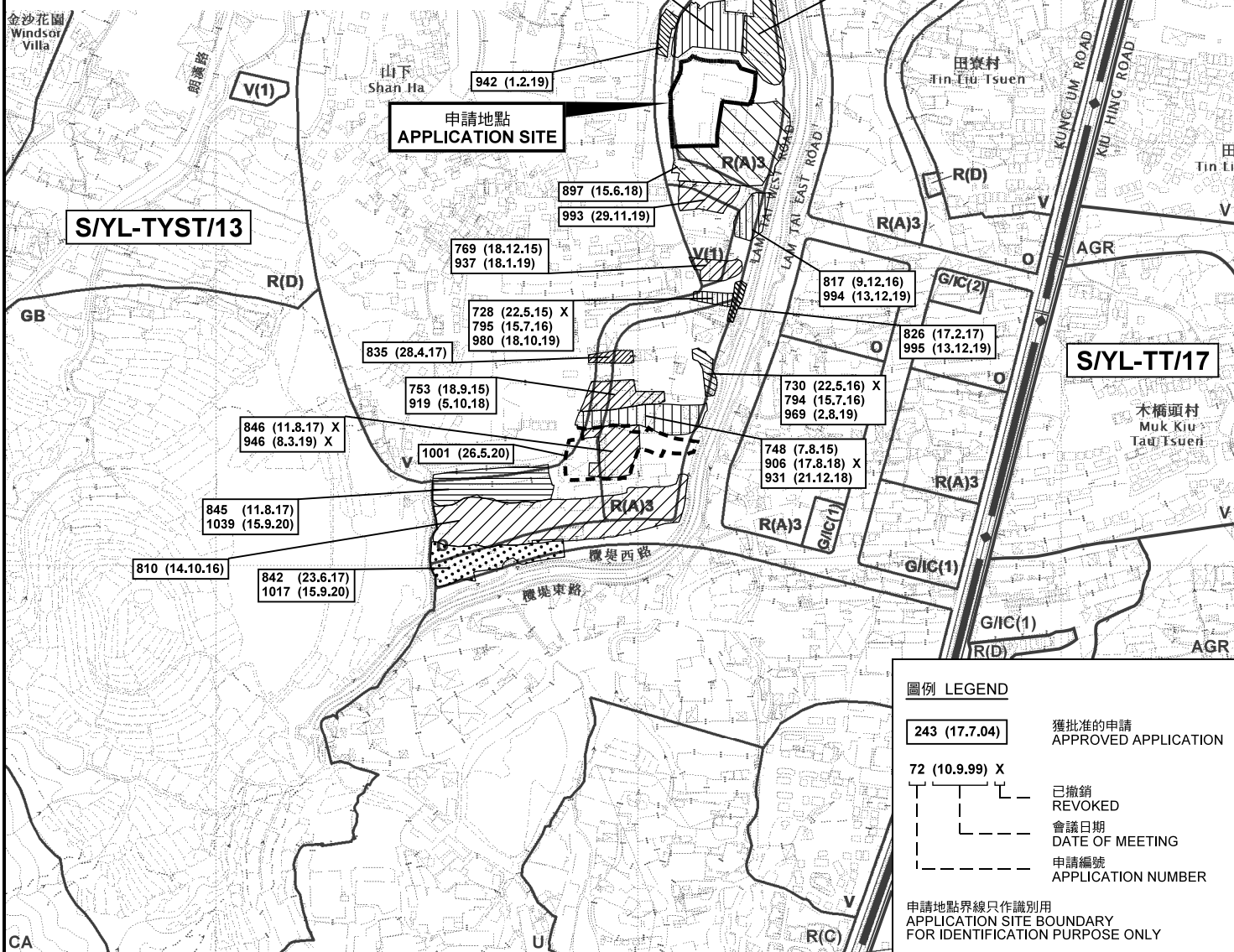
(摘錄自申請人於 22. 10. 2020 提交的申請書)
 (Extract from Applicant's Submission of 22.10.2020)

參考編號 REFERENCE No. AYL-TYST/1058	繪圖 DRAWING A-5
--	-------------------



要覽圖 KEY PLAN

SCALE 1 : 50 000 比例尺



圖例 LEGEND

- 243 (17.7.04) 獲批准的申請
APPROVED APPLICATION
- 72 (10.9.99) X 已撤銷
REVOKED
- 會議日期
DATE OF MEETING
- 申請編號
APPLICATION NUMBER

申請地點界線只作識別用
APPLICATION SITE BOUNDARY
FOR IDENTIFICATION PURPOSE ONLY

位置圖及同類申請 LOCATION PLAN WITH SIMILAR APPLICATIONS

臨時貨倉及露天存放回收物料(塑膠和金屬)連附屬工場(為期3年)
元朗山下村丈量約份第120約地段第2704號A分段及B分段(部分)、第2707號、第2708號、第2709號、第2710號及第2711號、丈量約份第121約地段第1638號、第1639號(部分)、第1640號(部分)、第1668號(部分)、第1669號(部分)、第1671號、第1672號、第1673號(部分)、第1674號(部分)及第1678號A及B分段(部分)和毗連政府土地
TEMPORARY WAREHOUSE AND OPEN STORAGE FOR STORAGE OF RECYCLABLE MATERIALS (PLASTIC AND METAL) WITH ANCILLARY WORKSHOP FOR A PERIOD OF 3 YEARS
LOTS 2704 S.A. & S.B (PART), 2707, 2708, 2709, 2710 AND 2711 IN D.D. 120, LOTS 1638, 1639 (PART), 1640 (PART), 1668 (PART), 1669 (PART), 1671, 1672, 1673 (PART), 1674 (PART) AND 1678 S.A. & B (PART) IN D.D. 121 AND ADJOINING GOVERNMENT LAND, SHAN HA TSUEN, YUEN LONG
SCALE 1 : 7 500 比例尺

米 100 0 100 200 300 米
METRES METRES

本摘要圖於2020年11月30日擬備，
所根據的資料為於2020年7月10日
展示的分區計劃大綱圖編號 S/YL-TYST/13
EXTRACT PLAN PREPARED ON 30.11.2020
BASED ON OUTLINE ZONING PLAN No.
S/YL-TYST/13 EXHIBITED ON 10.7.2020

規劃署
PLANNING
DEPARTMENT

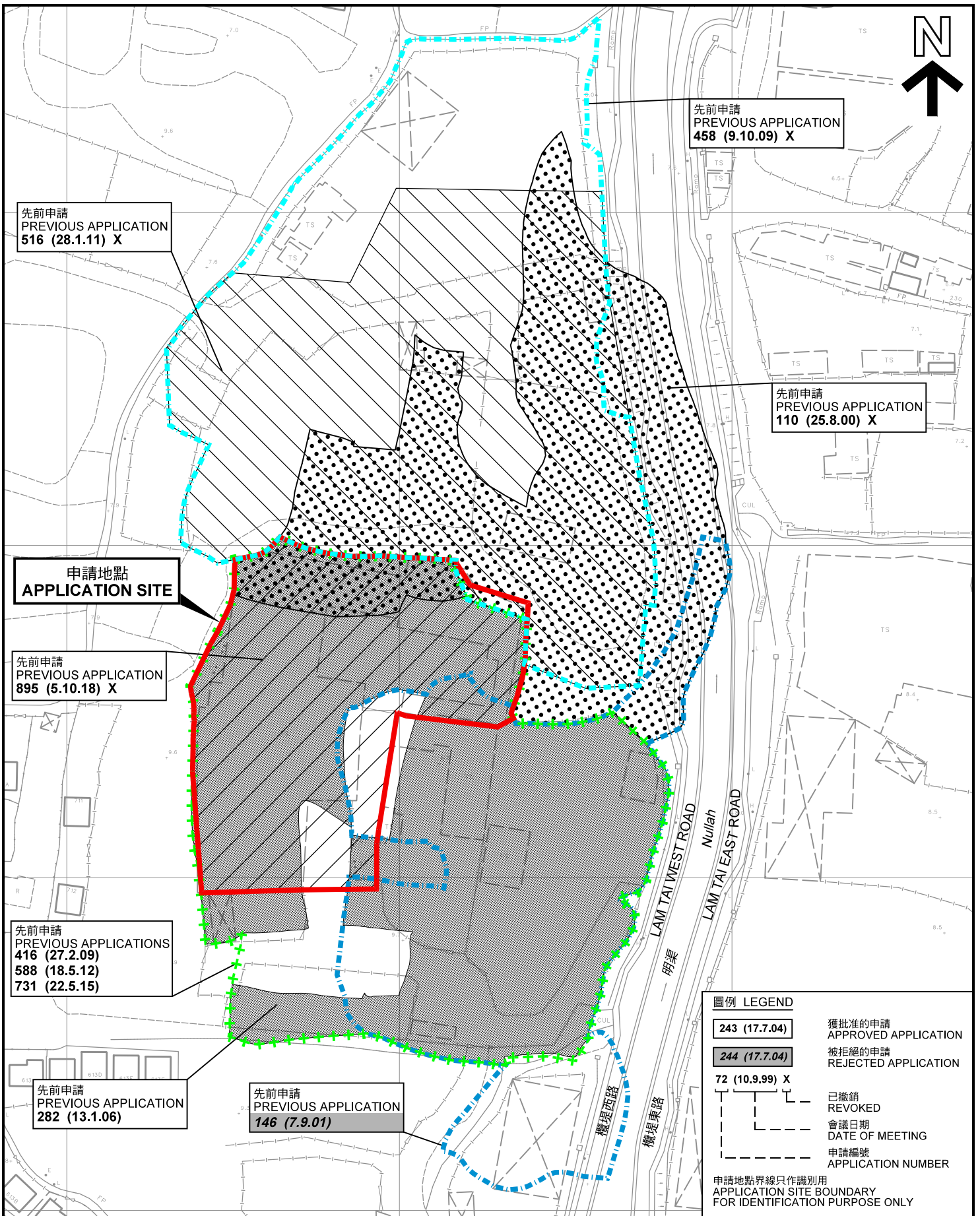


參考編號
REFERENCE No.

A/YL-TYST/1058

圖 PLAN

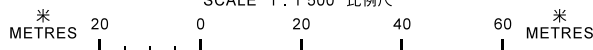
A-1a



圖例 LEGEND	
243 (17.7.04)	獲批准的申請 APPROVED APPLICATION
244 (17.7.04)	被拒絕的申請 REJECTED APPLICATION
72 (10.9.99) X	已撤銷 REVOKED
- - - - -	會議日期 DATE OF MEETING
- - - - -	申請編號 APPLICATION NUMBER
申請地點界線只作識別用 APPLICATION SITE BOUNDARY FOR IDENTIFICATION PURPOSE ONLY	

先申請圖 PREVIOUS APPLICATIONS PLAN

臨時貨倉及露天存放回收物料（塑膠和金屬）連附屬工場（為期3年）
元朗山下村丈量約份第120約地段第2704號A分段及B分段（部分）、第2707號、第2708號、
第2709號、第2710號及第2711號、丈量約份第121約地段第1638號、第1639號（部分）、
第1640號（部分）、第1668號（部分）、第1669號（部分）、第1671號、第1672號、
第1673號（部分）、第1674號（部分）及第1678號A及B分段（部分）和毗連政府土地
TEMPORARY WAREHOUSE AND OPEN STORAGE FOR STORAGE OF RECYCLABLE MATERIALS (PLASTIC AND METAL) WITH
ANCILLARY WORKSHOP FOR A PERIOD OF 3 YEARS
LOTS 2704 S.A & S.B (PART), 2707, 2708, 2709, 2710 AND 2711 IN D.D. 120,
LOTS 1638, 1639 (PART), 1640 (PART), 1668 (PART), 1669 (PART),
1671, 1672, 1673 (PART), 1674 (PART) AND 1676 S.A & B (PART)
IN D.D. 121 AND ADJOINING GOVERNMENT LAND, SHAN HA TSUEN, YUEN LONG
SCALE 1 : 1 500 比例尺



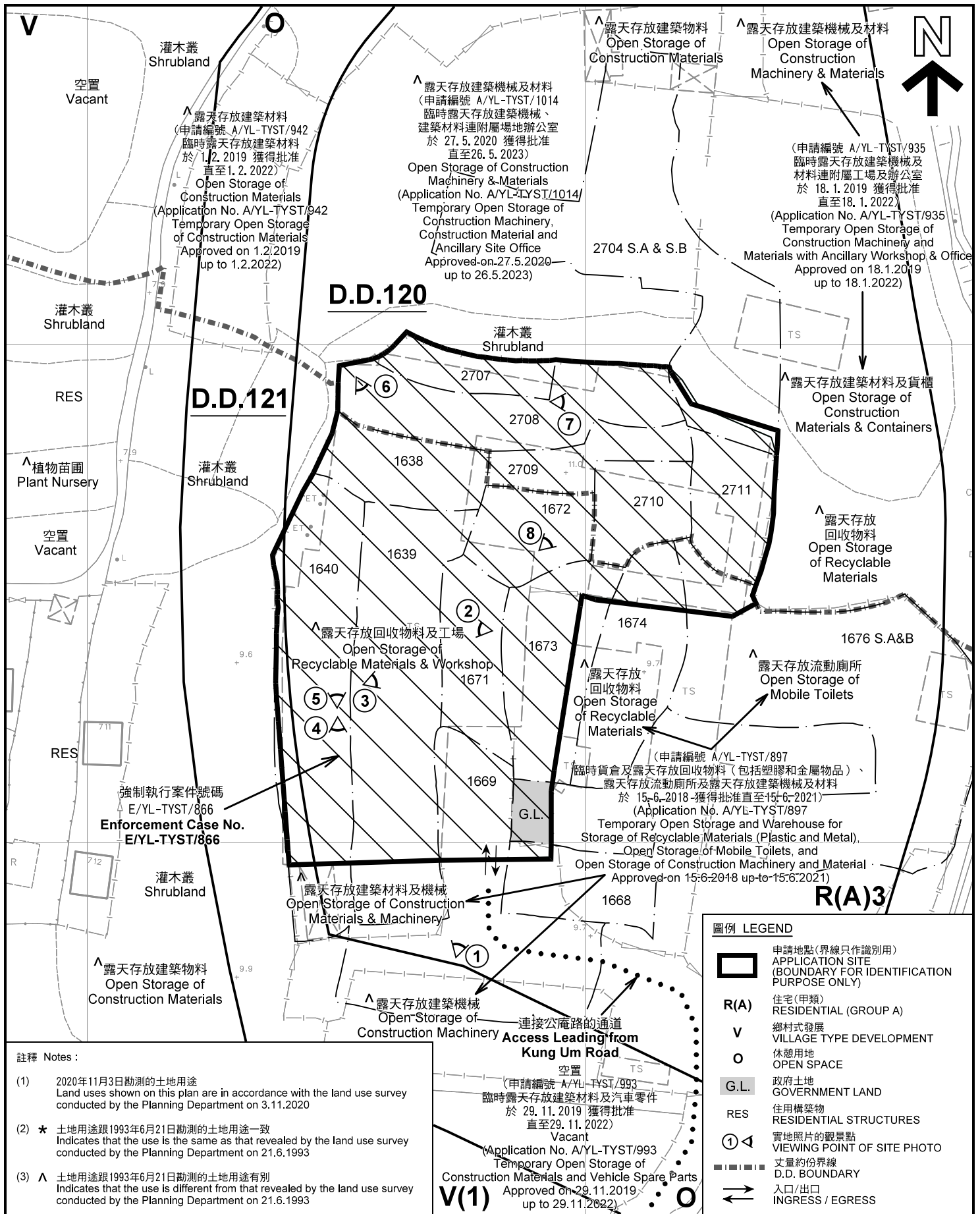
本摘要圖於2020年11月30日擬備，所根據的資料為測量圖編號 6-NW-14C、14D 及 19A
EXTRACT PLAN PREPARED ON 30.11.2020
BASED ON SURVEY SHEETS No.
6-NW-14C, 14D & 19A

規劃署
PLANNING
DEPARTMENT



參考編號
REFERENCE No.
A/YL-TYST/1058

圖 PLAN
A-1b



註釋 Notes:

- (1) 2020年11月3日勘測的土地用途
Land uses shown on this plan are in accordance with the land use survey conducted by the Planning Department on 3.11.2020
- (2) * 土地用途跟1993年6月21日勘測的土地用途一致
Indicates that the use is the same as that revealed by the land use survey conducted by the Planning Department on 21.6.1993
- (3) ^ 土地用途跟1993年6月21日勘測的土地用途有別
Indicates that the use is different from that revealed by the land use survey conducted by the Planning Department on 21.6.1993

平面圖 SITE PLAN

臨時貨倉及露天存放回收物料(塑膠和金屬)連附屬工場(為期3年)
元朗山下村丈量約份第120約地段第2704號A分段及B分段(部分)、第2707號、第2708號、第2709號、第2710號及第2711號、丈量約份第121約地段第1638號、第1639號(部分)、第1640號(部分)、第1668號(部分)、第1669號(部分)、第1671號、第1672號、第1673號(部分)、第1674號(部分)及第1675號A及B分段(部分)連附屬政府土地
TEMPORARY WAREHOUSE AND OPEN STORAGE FOR STORAGE OF RECYCLABLE MATERIALS (PLASTIC AND METAL) WITH ANCILLARY WORKSHOP FOR A PERIOD OF 3 YEARS
LOTS 2704 S.A & S.B (PART), 2707, 2708, 2709, 2710 AND 2711 IN D.D. 120, LOTS 1638, 1639 (PART), 1640 (PART), 1668 (PART), 1669 (PART), 1671, 1672, 1673 (PART), 1674 (PART) AND 1675 S.A & B (PART) IN D.D. 121 AND ADJOINING GOVERNMENT LAND, SHAN HA TSUEN, YUEN LONG
SCALE 1 : 1 000 比例尺

米 20 0 20 40 米
METRES

**規劃署
PLANNING
DEPARTMENT**



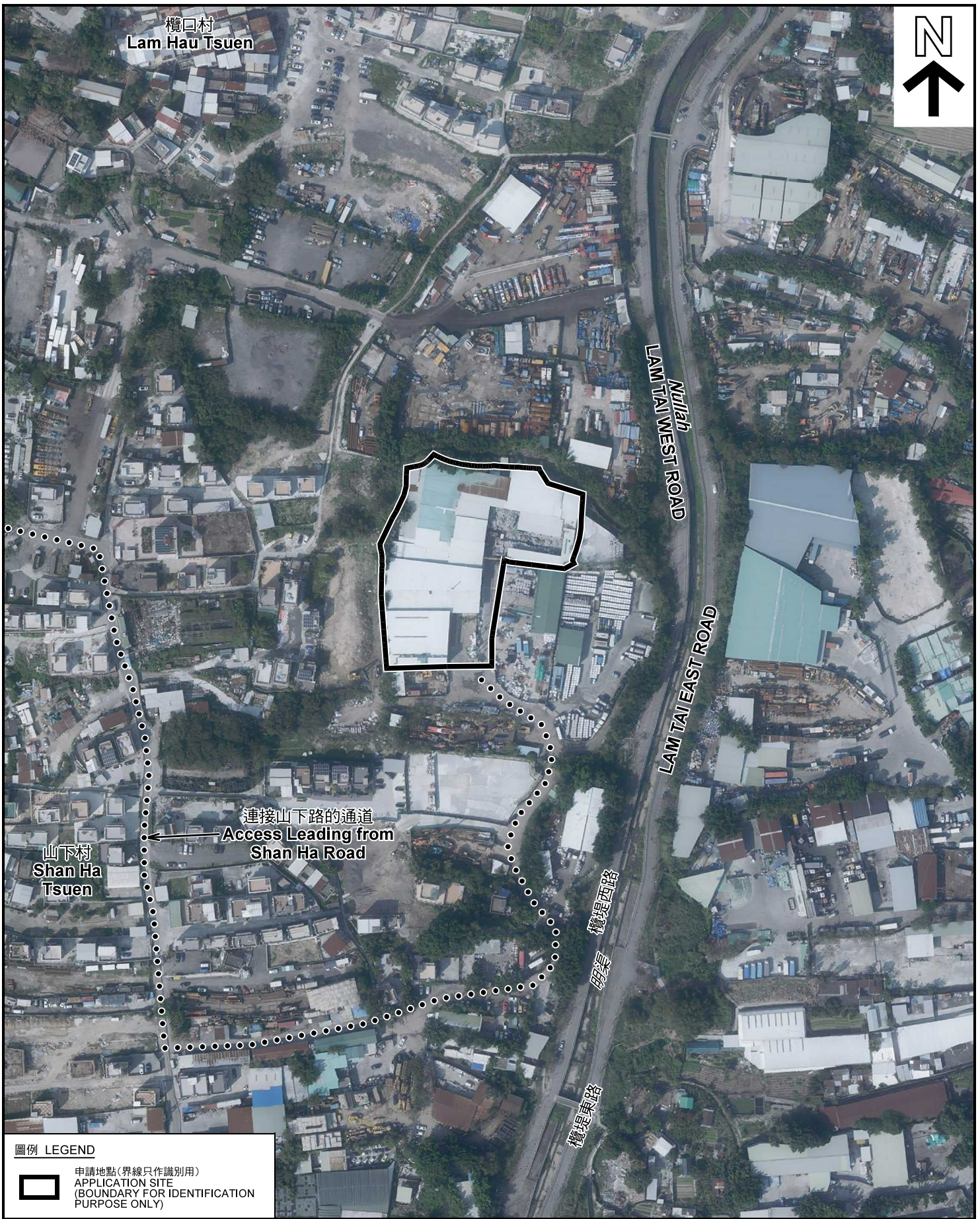
參考編號
REFERENCE No.

A/YL-TYST/1058

圖 PLAN

A-2

本摘要圖於2020年12月3日擬備, 所根據的資料為測量圖編號 6-NW-14C
EXTRACT PLAN PREPARED ON 3.12.2020 BASED ON SURVEY SHEET No. 6-NW-14C



欄口村
Lam Hau Tsuen



LAM TAI WEST ROAD
Mullah


LAM TAI EAST ROAD

連接山下路的通道
Access Leading from
Shan Ha Road

山下村
Shan Ha
Tsuen

橫堤西路
橫堤東路

圖例 LEGEND

 申請地點(界線只作識別用)
APPLICATION SITE
(BOUNDARY FOR IDENTIFICATION
PURPOSE ONLY)

本摘要圖於2020年11月23日擬備，所根據的資料為地政總署於2020年2月18日拍得的航攝照片編號 E089433C
EXTRACT PLAN PREPARED ON 23.11.2020
BASED ON AERIAL PHOTO No.
E089433C TAKEN ON 18.2.2020
BY LANDS DEPARTMENT

航攝照片 AERIAL PHOTO

臨時貨倉及露天存放回收物料(塑膠和金屬)連附屬工場(為期3年)
元朗山下村丈量約份第120約地段第2704號A分段及B分段(部分)、第2707號、第2708號、
第2709號、第2710號及第2711號、丈量約份第121約地段第1638號、第1639號(部分)、
第1640號(部分)、第1608號(部分)、第1639號(部分)、第1671號、第1672號、
第1673號(部分)、第1674號(部分)及第1676號A及B分段(部分)和毗連政府土地
TEMPORARY WAREHOUSE AND OPEN STORAGE FOR STORAGE
OF RECYCLABLE MATERIALS (PLASTIC AND METAL) WITH
ANCILLARY WORKSHOP FOR A PERIOD OF 3 YEARS
LOTS 2704 S.A & S.B (PART), 2707, 2708, 2709, 2710 AND 2711 IN D.D. 120,
LOTS 1638, 1639 (PART), 1640 (PART), 1668 (PART), 1669 (PART),
1671, 1672, 1673 (PART), 1674 (PART) AND 1676 S.A & B (PART)
IN D.D. 121 AND ADJOINING GOVERNMENT LAND, SHAN HA TSUEN, YUEN LONG

規劃署
PLANNING
DEPARTMENT



參考編號
REFERENCE No.
A/YL-TYST/1058

圖 PLAN
A-3



實地照片 SITE PHOTOS

臨時貨倉及露天存放回收物料（塑膠和金屬）連附屬工場（為期3年）
元朗山下村丈量約份第120約地段第2704號A分段及B分段（部分）、第2707號、第2708號、
第2709號、第2710號及第2711號、丈量約份第121約地段第1638號、第1639號（部分）、
第1640號（部分）、第1658號（部分）、第1659號（部分）、第1671號、第1672號、
第1673號（部分）、第1674號（部分）及第1676號A及B分段（部分）和毗連政府土地
TEMPORARY WAREHOUSE AND OPEN STORAGE FOR STORAGE
OF RECYCLABLE MATERIALS (PLASTIC AND METAL) WITH
ANCILLARY WORKSHOP FOR A PERIOD OF 3 YEARS
LOTS 2704 S.A & S.B (PART), 2707, 2708, 2709, 2710 AND 2711 IN D.D. 120,
LOTS 1638, 1639 (PART), 1640 (PART), 1658 (PART), 1659 (PART),
1671, 1672, 1673 (PART), 1674 (PART) AND 1676 S.A & B (PART)
IN D.D. 121 AND ADJOINING GOVERNMENT LAND, SHAN HA TSUEN, YUEN LONG

本圖於2020年11月24日擬備，所根據的
資料為攝於2020年11月3日的實地照片
PLAN PREPARED ON 24.11.2020
BASED ON SITE PHOTOS
TAKEN ON 3.11.2020

規劃署
PLANNING
DEPARTMENT



參考編號
REFERENCE No.
A/YL-TYST/1058

圖 PLAN
A-4a



5

申請地點
APPLICATION SITE



6

申請地點
APPLICATION SITE



7

申請地點
APPLICATION SITE



8

申請地點
APPLICATION SITE

實地照片 SITE PHOTOS

臨時貨倉及露天存放回收物料（塑膠和金屬）連附屬工場（為期3年）
元朗山下村丈量約份第120約地段第2704號A分段及B分段（部分）、第2707號、第2708號、
第2709號、第2710號及第2711號、丈量約份第121約地段第1638號、第1639號（部分）、
第1640號（部分）、第1608號（部分）、第1609號（部分）、第1671號、第1672號、
第1673號（部分）、第1674號（部分）及第1676號A及B分段（部分）和毗連政府土地
TEMPORARY WAREHOUSE AND OPEN STORAGE FOR STORAGE
OF RECYCLABLE MATERIALS (PLASTIC AND METAL) WITH
ANCILLARY WORKSHOP FOR A PERIOD OF 3 YEARS
LOTS 2704 S.A & S.B (PART), 2707, 2708, 2709, 2710 AND 2711 IN D.D. 120,
LOTS 1638, 1639 (PART), 1640 (PART), 1668 (PART), 1669 (PART),
1671, 1672, 1673 (PART), 1674 (PART) AND 1676 S.A & B (PART)
IN D.D. 121 AND ADJOINING GOVERNMENT LAND, SHAN HA TSUEN, YUEN LONG

本圖於2020年11月24日擬備，所根據的資料為攝於2020年11月3日的實地照片
PLAN PREPARED ON 24.11.2020
BASED ON SITE PHOTOS
TAKEN ON 3.11.2020

規劃署
PLANNING
DEPARTMENT



參考編號
REFERENCE No.
A/YL-TYST/1058

圖 PLAN
A-4b