

<p>Project 16/12/4:</p> <p>Proposed Temporary Warehouse and Open Storage for Storage of Recyclable Materials (Plastic and Metal) with Ancillary Workshop for a Period of 3 Years at Lots 2704 S.A & S.B (Part), 2707, 2708, 2709, 2710, 2711 in D.D. 120, Lots 1638, 1639 (Part), 1640 (Part), 1668 (Part), 1669 (Part), 1671, 1672, 1673 (Part), 1674 (Part), 1676 S.A & B (Part) in D.D.121 and Adjoining Government Land, Shan Ha Tsuen, Yuen Long, N.T.</p>	<p>Drawing Title 圖名:</p> <p>Location Plan</p>	<p>Remarks 備註:</p> <p>●●● Vehicular access leading from Shan Ha Road</p>
	<p>Drawing No. 圖號:</p> <p>Figure 2</p>	<p>Scale 比例尺:</p> <p>1:7500</p>

(摘錄自申請人於 20.4.2018 呈交的補充資料)
 (Extract from Applicant's Supplementary Information Submitted on 20.4.2018)

<p>參考編號 REFERENCE No. AYL-TYST/895</p>	<p>繪圖 DRAWING A-1</p>
---	----------------------------------

N



Structure 2

Open shed for storage of recyclable material (plastic and metal)
GFA: Not exceeding 3,250m²
Height: Not exceeding 9m
No. of storey: 1

Structure 3

Site office
GFA: Not exceeding 196m²
Height: Not exceeding 7.5m
No. of storey: 2



Structure 4

Classification facility for recyclable material
GFA: Not exceeding 290m²
Height: Not exceeding 7.5m
No. of storey: 2

Structure 1

Warehouse for storage of recyclable material (plastic and metal)
GFA: Not exceeding 908m²
Height: Not exceeding 9m
No. of storey: 1

15m wide Ingress/Egress

Two loading/unloading bays
11m x 3.5m for medium goods vehicle

<p>Project 項目名稱: Proposed Temporary Warehouse and Open Storage for Storage of Recyclable Materials (Plastic and Metal) with Ancillary Workshop for a Period of 3 Years at Lots 2704 S.A & S.B (Part), 2707, 2708, 2709, 2710, 2711 in D.D. 120, Lots 1638, 1639 (Part), 1640 (Part), 1668 (Part), 1669 (Part), 1671, 1672, 1673 (Part), 1674 (Part), 1676 S.A & B (Part) in D.D.121 and Adjoining Government Land, Shan Ha Tsuen, Yuen Long, N.T.</p>	<p>Drawing Title 圖名: Proposed Layout Plan</p>	<p>Remarks 備註:</p>
	<p>Drawing No. 圖號: Figure 3</p>	<p>Scale 比例: 4:1000</p>

(摘錄自申請人於 31.5.2018 呈交的進一步資料)
(Extract from Applicant's Further Information Submitted on 31.5.2018)

<p>參考編號 REFERENCE No. AYL-TYST/895</p>	<p>繪圖 DRAWING A-2</p>
--	---------------------------

N



Tree	Approximate Height	Spacing
○ Existing trees to be preserved	4m to 6m	3m to 4m

Structure 3

Site office
 GFA: Not exceeding 196m²
 Height: Not exceeding 7.5m
 No. of storey: 2

Structure 2

Open shed for storage of recyclable material (plastic and metal)
 GFA: Not exceeding 3,250m²
 Height: Not exceeding 9m
 No. of storey: 1

Structure 4

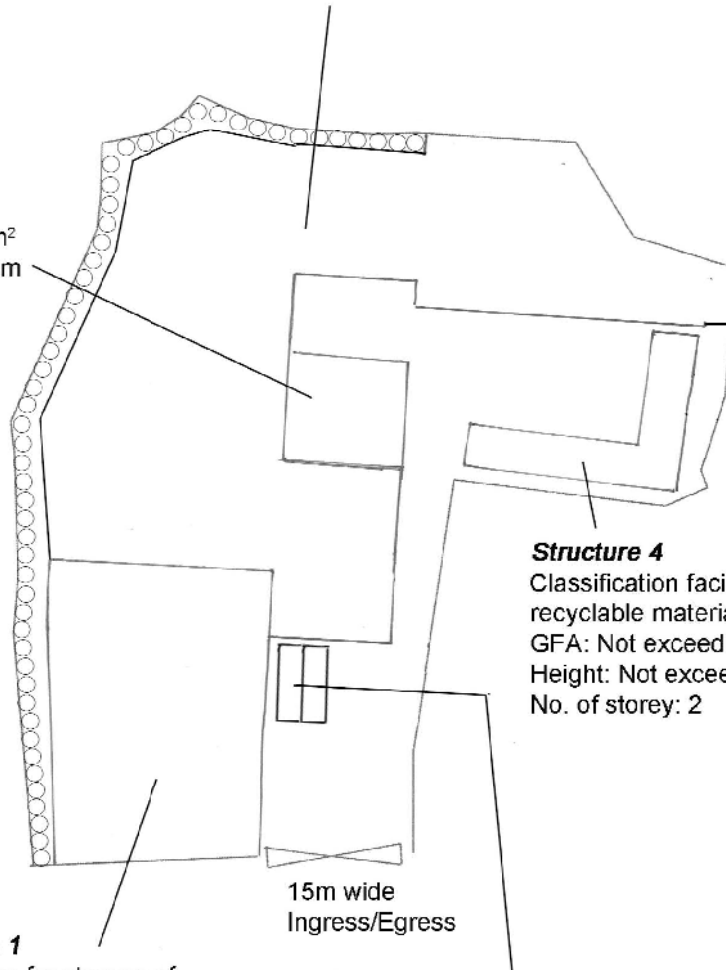
Classification facility for recyclable material
 GFA: Not exceeding 290m²
 Height: Not exceeding 7.5m
 No. of storey: 2

Structure 1

Warehouse for storage of recyclable material (plastic and metal)
 GFA: Not exceeding 908m²
 Height: Not exceeding 9m
 No. of storey: 1

15m wide Ingress/Egress

Two loading/unloading bays
 11m x 3.5m for medium goods vehicle



Project 項目名稱:

Proposed Temporary Warehouse and Open Storage for Storage of Recyclable Materials (Plastic and Metal) with Ancillary Workshop for a Period of 3 Years at Lots 2704 S.A & S.B (Part), 2707, 2708, 2709, 2710, 2711 in D.D. 120, Lots 1638, 1639 (Part), 1640 (Part), 1668 (Part), 1669 (Part), 1671, 1672, 1673 (Part), 1674 (Part), 1676 S.A & B (Part) in D.D.121 and Adjoining Government Land, Shan Ha Tsuen, Yuen Long, N.T.

Drawing Title 圖目:

Proposed Landscape & Tree Preservation Plan

Remarks 備註:

Drawing No. 圖號:

Figure 4

Scale 比例:

1:1000

(摘錄自申請人於 31.5.2018 呈交的進一步資料)
 (Extract from Applicant's Further Information Submitted on 31.5.2018)

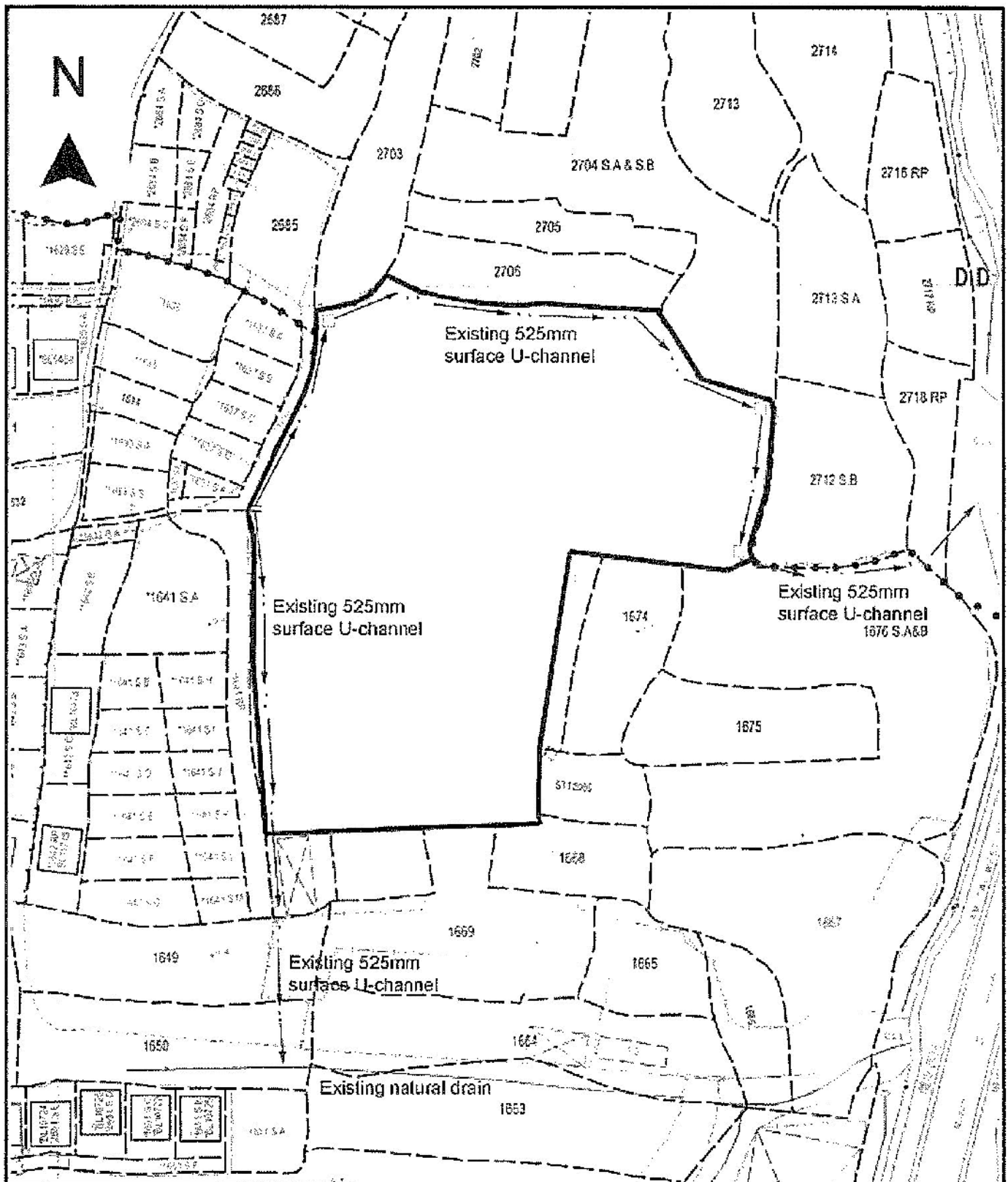
參考編號

REFERENCE No.

AYL-TYST/895

繪圖 DRAWING

A-3

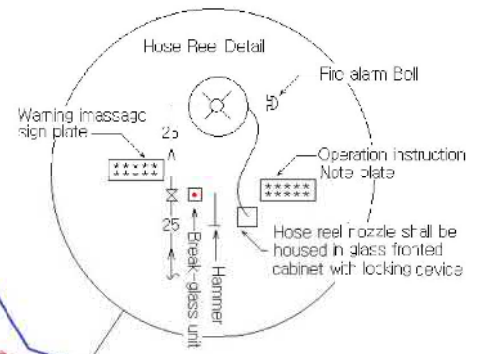


<p>Project No. 2017/18</p> <p>Proposed Temporary Warehouse and Open Storage for Storage of Recyclable Materials (Plastic and Metal) with Ancillary Workshop for a Period of 3 Years at Lots 2704 S.A & S.B (Part), 2707, 2708, 2709, 2710, 2711 in D.D. 120, Lots 1638, 1639 (Part), 1640 (Part), 1668 (Part), 1669 (Part), 1671, 1672, 1673 (Part), 1674 (Part), 1676 S.A & B (Part) in D.D.121 and Adjoining Government Land, Shan Ha Tsuen, Yuen Long, N.T.</p>	<p>Drawing Title (圖名):</p> <p>As-built Drainage Plan</p> <p>Drawing No. (圖號):</p> <p>Figure 5</p>	<p>Remarks (備註):</p> <p>This drainage plan was accepted for compliance with planning conditions (g) & (h) for previous planning permission No. AYL-TYST/416</p> <p>Scale (比例):</p> <p>1:1000</p>
--	---	---

(摘錄自申請人於 20.4.2018 呈交的補充資料)
 (Extract from Applicant's Supplementary Information Submitted on 20.4.2018)

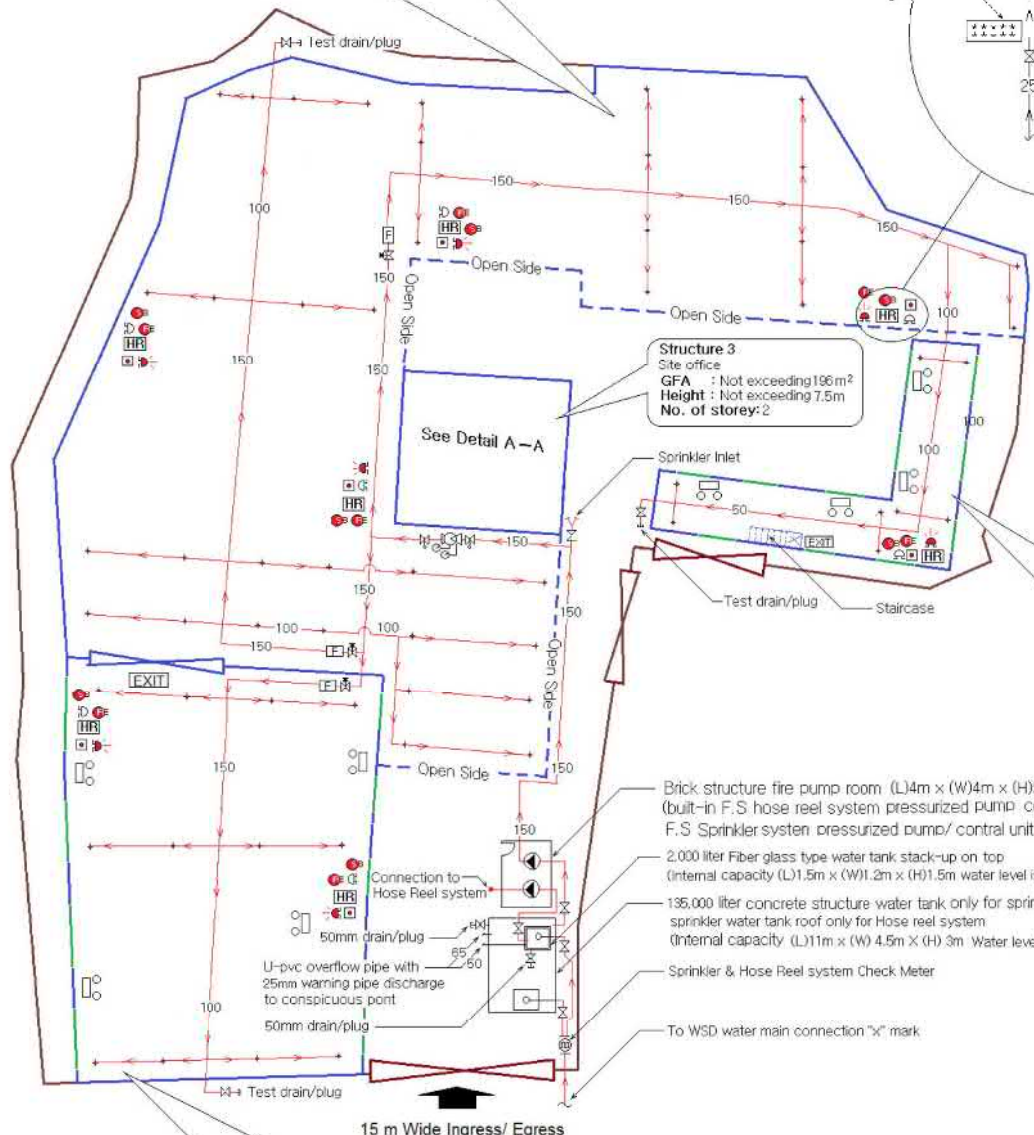
<p>參考編號 REFERENCE No. AYL-TYST/895</p>	<p>繪圖 DRAWING A-4</p>
---	----------------------------------

Structure 2
 Open shed for storage of recyclable material (plastic and metal)
GFA : Not exceeding 3250m²
Height : Not exceeding 9m
No. of storey: 1
 Installed 68° sprinkler head 271 Nos. Each sprinkler head coverage not less than 12 square metres



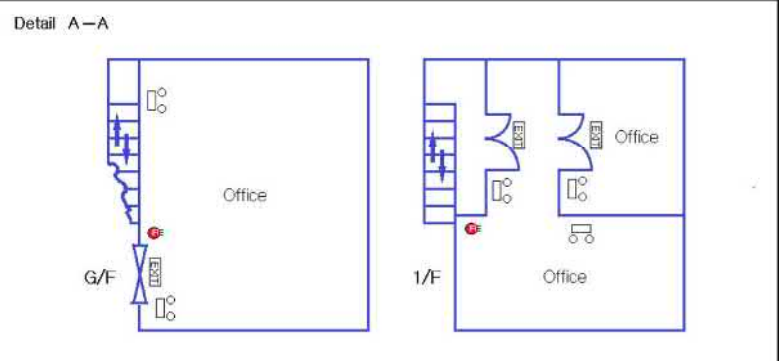
Structure 3
 Site office
GFA : Not exceeding 196m²
Height : Not exceeding 7.5m
No. of storey: 2

Structure 4
 Classification facility for recyclable material
GFA : Not exceeding 200m²
Height : Not exceeding 7.5m
No. of storey: 2
 The aggregate area of openable windows 18.125 square metres not less than 6.25% of the floor area of structure and installed 68° sprinkler head 24 Nos. Each sprinkler head coverage not less than 12 square metres



- Brick structure fire pump room (L)4m x (W)4m x (H)2.5m (built-in F.S hose reel system pressurized pump/ control unit devices and F.S Sprinkler system pressurized pump/ control unit devices)
- 2,000 liter Fiber glass type water tank stack-up on top (Internal capacity (L)1.5m x (W)1.2m x (H)1.5m water level is 1.2m)
- 135,000 liter concrete structure water tank only for sprinkler system sprinkler water tank roof only for Hose reel system (Internal capacity (L)11m x (W) 4.5m X (H) 3m Water level is 2.8m)
- Sprinkler & Hose Reel system Check Meter
- To WSD water main connection "X" mark

Structure 1
 Warehouse for storage of recyclable material (plastic and metal)
GFA : Not exceeding 908m²
Height : Not exceeding 9m
No. of storey: 1
 The aggregate area of openable windows 56.75 square metres not less than 6.25% of the floor area of structure and installed 68° sprinkler head 76 Nos. Each sprinkler head coverage not less than 12 square metres



Legends :

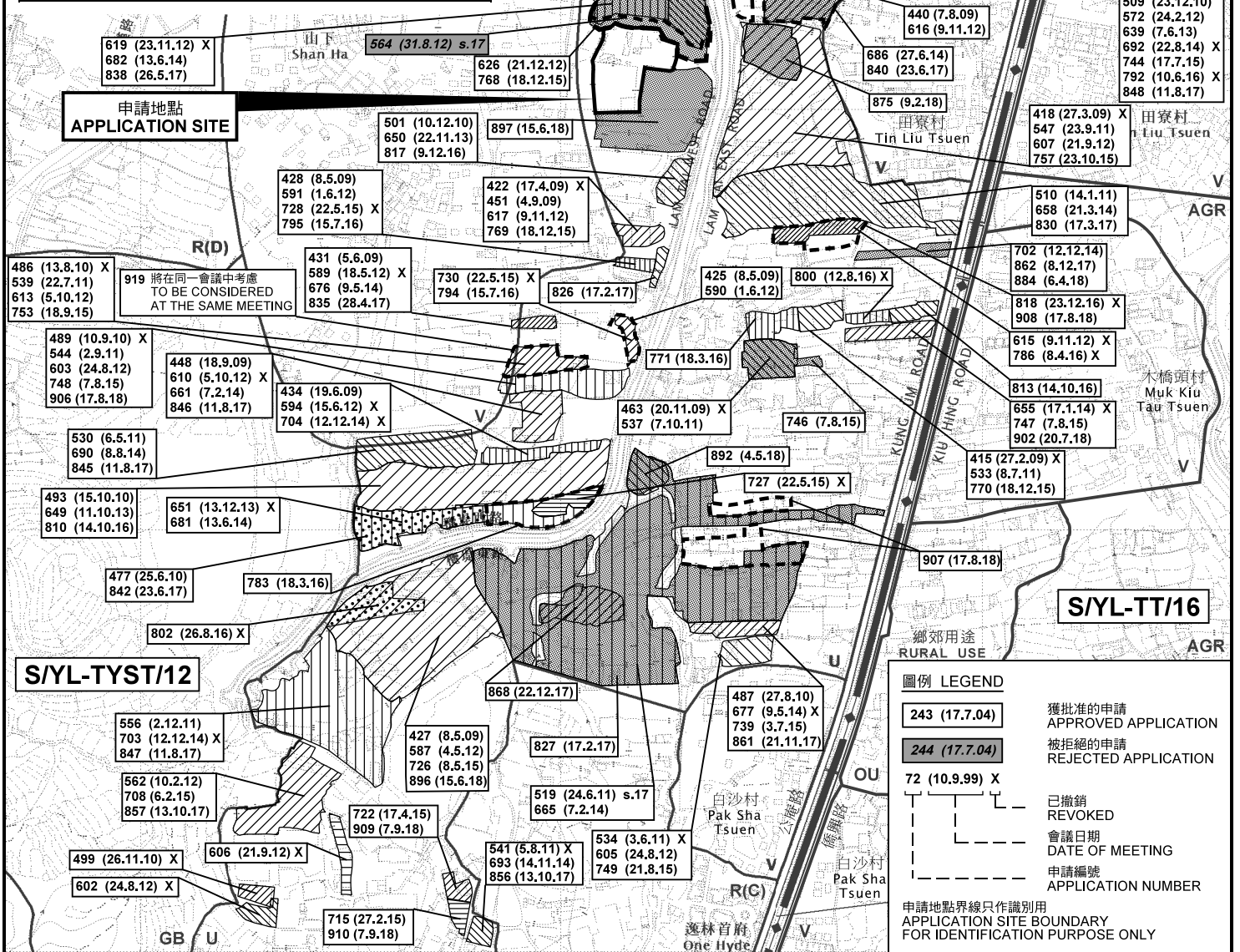
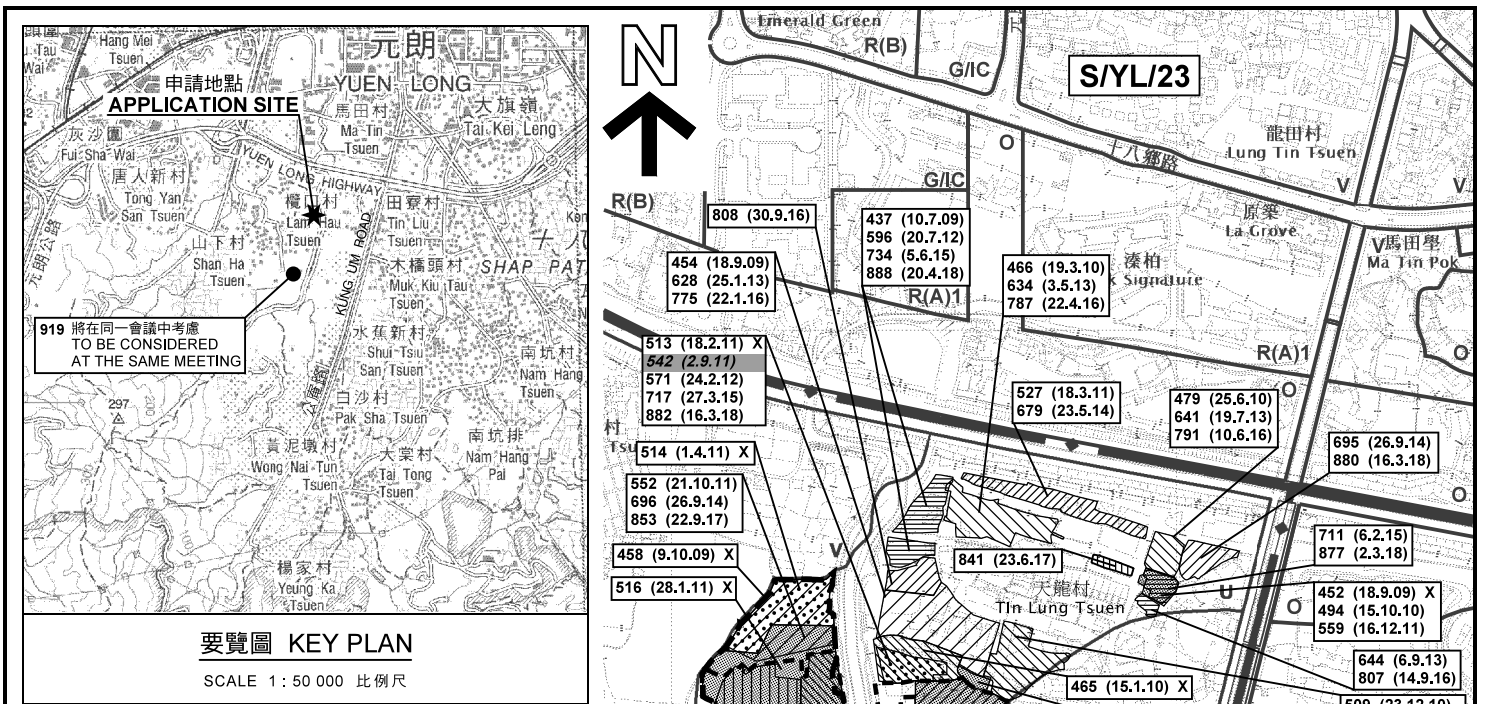
Hose Reel	EXIT Exit Sign	5 Kg Co2 Gase type Fire Extinguisher	Press switch	Non-return valve	Proving pipe assembly
Manual Fire Alarm call point	Water Alarm bell	Sand Bucket	Control /Alarm valve	Gate valve (normal close)	Flow meter
Fire Alarm bell	Visual Fire Alarm	Press gauge	Emergency Light	Gate valve (with monitoring)	15 Kw Sprinkler pump
			Subsidiary valve/ Flow switch	Sprinkler Inlet	2.2 Kw Jockey pump/ Hose reel pump

Application Address : Lots 2704 S.A & S.B(Part), 2707,2708, 2709,2710, 2711 in D.D.120 and Lots 1638,1639 (Part),1640(Part),1668 (Part),1669(Part),1671,1672,1673(Part), 1674 (Part),1676 S.A & B (Part) in D.D.121 Shan Ha Tsuen, Yuen Long, N.T.

Drawing Title: Fire Service Installation Layout Plan Drawing No. LOP/706m/FS Scale: 1:700 Drawing by :K.W.Lee Date : 7 June 2018

(摘錄自申請人於 23. 8. 2018 呈交的進一步資料)
 (Extract from Applicant's Further Information Submitted on 23.8.2018)

參考編號 REFERENCE No. AYL-TYST/895	繪圖 DRAWING A-5
---------------------------------------	-------------------



本摘要圖於2018年9月27日擬備，所根據的資料為於2018年9月4日核准的分區計劃大綱圖編號 S/YL-TYST/12 EXTRACT PLAN PREPARED ON 27.9.2018 BASED ON OUTLINE ZONING PLAN NO. S/YL-TYST/12 APPROVED ON 4.9.2018

位置圖及同類申請 LOCATION PLAN WITH SIMILAR APPLICATIONS

臨時貨倉及露天存放回收物料(包括塑膠和金屬物品)連附屬工場(為期3年)
元朗山下村丈量約份第120約地段第2704號A分段及B分段(部分)、第2707號、第2708號、第2709號、第2710號及第2711號、丈量約份第121約地段第1638號、第1639號(部分)、第1640號(部分)、第1668號(部分)、第1669號(部分)、第1671號、第1672號、第1673號(部分)、第1674號(部分)及第1676號A及B分段(部分)和毗連政府土地
TEMPORARY WAREHOUSE AND OPEN STORAGE FOR STORAGE OF RECYCLABLE MATERIALS (PLASTIC AND METAL) WITH ANCILLARY WORKSHOP FOR A PERIOD OF 3 YEARS
LOTS 2704 S.A & S.B (PART), 2707, 2708, 2709, 2710 AND 2711 IN D.D.120, LOTS 1638, 1639 (PART), 1640 (PART), 1668 (PART), 1669 (PART), 1671, 1672, 1673 (PART), 1674 (PART) AND 1676 S.A&B (PART) IN D.D.121 AND ADJOINING GOVERNMENT LAND, SHAN HA TSUEN, YUEN LONG

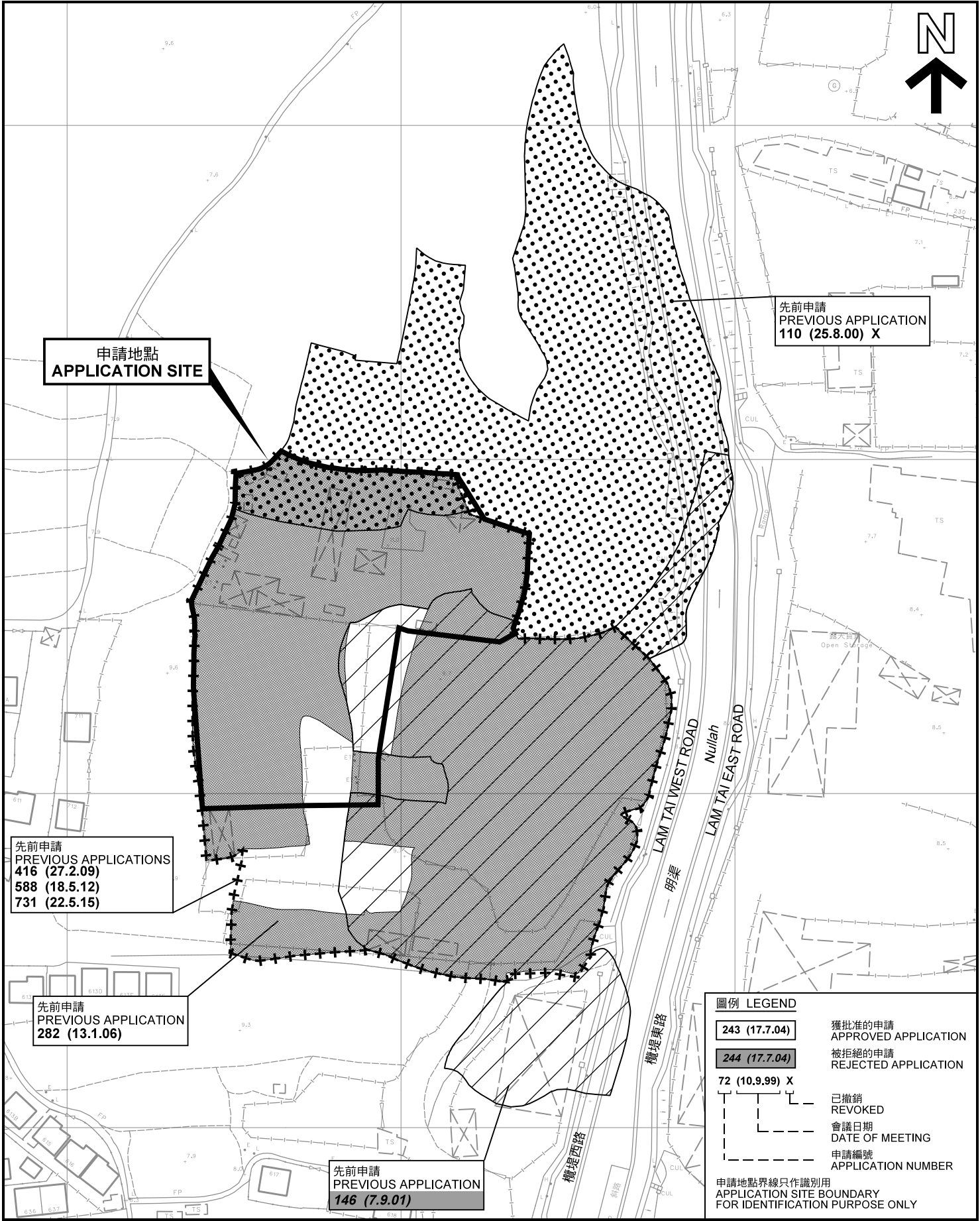
SCALE 1 : 7 500 比例尺

米 100 0 100 200 300 米
METRES

規劃署 PLANNING DEPARTMENT

參考編號 REFERENCE No. **A/YL-TYST/895**

圖 PLAN **A-1a**



申請地點
APPLICATION SITE

先前申請
PREVIOUS APPLICATION
110 (25.8.00) X

先前申請
PREVIOUS APPLICATIONS
416 (27.2.09)
588 (18.5.12)
731 (22.5.15)

先前申請
PREVIOUS APPLICATION
282 (13.1.06)

先前申請
PREVIOUS APPLICATION
146 (7.9.01)

圖例 LEGEND

243 (17.7.04)

獲批准的申請
APPROVED APPLICATION

244 (17.7.04)

被拒絕的申請
REJECTED APPLICATION

72 (10.9.99) X

已撤銷
REVOKED

會議日期
DATE OF MEETING

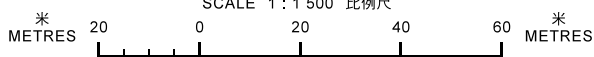
申請編號
APPLICATION NUMBER

申請地點界線只作識別用
APPLICATION SITE BOUNDARY
FOR IDENTIFICATION PURPOSE ONLY

先前申請圖 PREVIOUS APPLICATIONS PLAN

臨時貨倉及露天存放回收物料(包括塑膠和金屬物品)連附屬工場(為期3年)
元朗山下村丈量約份第120約地段第2704號A分段及B分段(部分)、
第2707號、第2708號、第2709號、第2710號及第2711號、
丈量約份第121約地段第1638號、第1639號(部分)、第1640號(部分)、第1668號(部分)、第1669號(部分)、
第1671號、第1672號、第1673號(部分)、第1674號(部分)及第1676號A及B分段(部分)和毗連政府土地
TEMPORARY WAREHOUSE AND OPEN STORAGE FOR STORAGE OF RECYCLABLE MATERIALS
(PLASTIC AND METAL) WITH ANCILLARY WORKSHOP FOR A PERIOD OF 3 YEARS
LOTS 2704 S.A & S.B (PART), 2707, 2708, 2709, 2710 AND 2711 IN D.D.120,
LOTS 1638, 1639 (PART), 1640 (PART), 1668 (PART), 1669 (PART), 1671, 1672,
1673 (PART), 1674 (PART) AND 1676 S.A&B (PART) IN D.D.121 AND
ADJOINING GOVERNMENT LAND, SHAN HA TSUEN, YUEN LONG

SCALE 1 : 1 500 比例尺



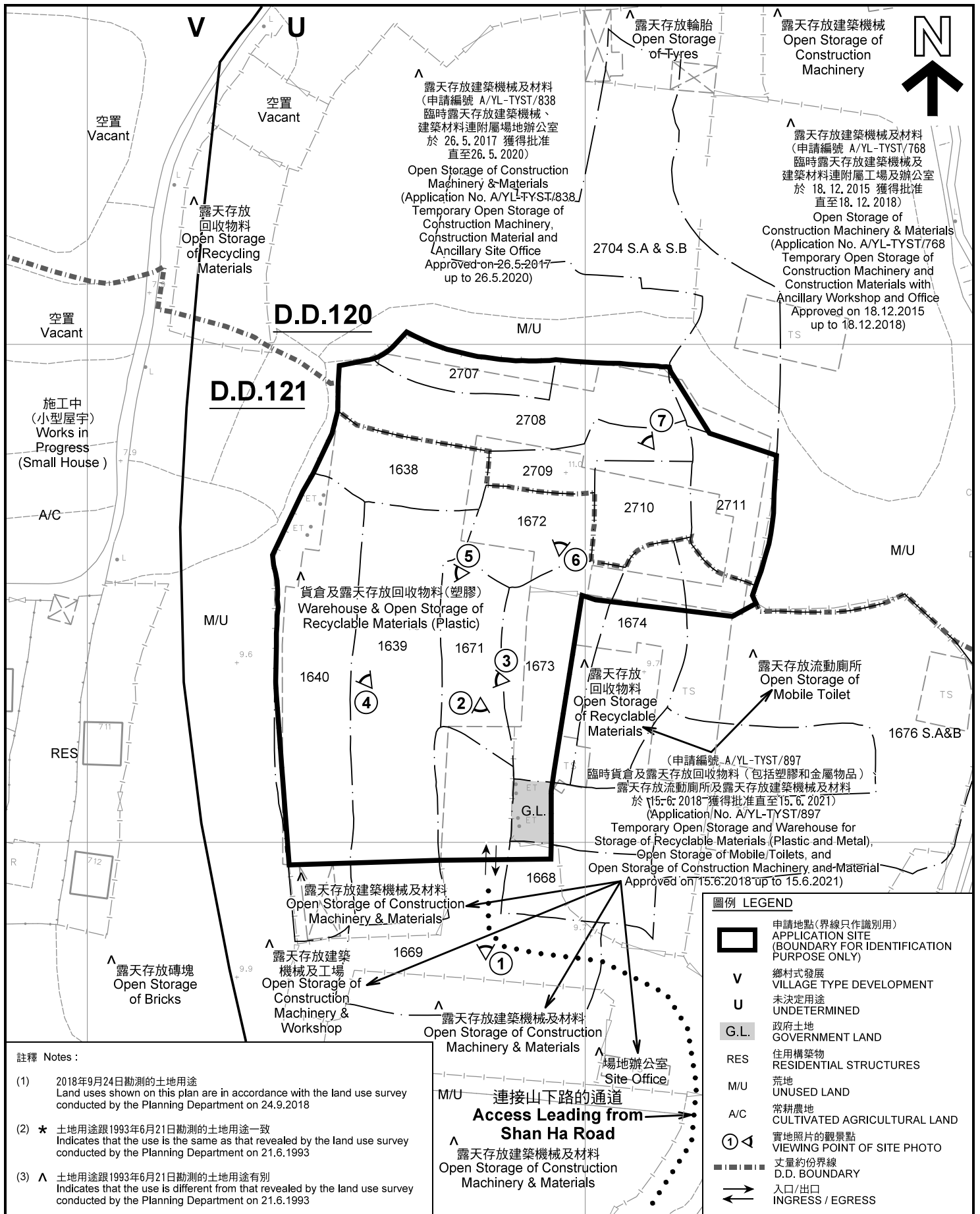
本摘要圖於2018年9月21日擬備，所根據的資料為測量圖編號 6-NW-14C、14D 及 19A
EXTRACT PLAN PREPARED ON 21.9.2018
BASED ON SURVEY SHEETS No. 6-NW-14C, 14D & 19A

規劃署
PLANNING
DEPARTMENT



參考編號
REFERENCE No.
AYL-TYST/895

圖 PLAN
A-1b



註釋 Notes:

- (1) 2018年9月24日勘測的土地用途
Land uses shown on this plan are in accordance with the land use survey conducted by the Planning Department on 24.9.2018
- (2) * 土地用途跟1993年6月21日勘測的土地用途一致
Indicates that the use is the same as that revealed by the land use survey conducted by the Planning Department on 21.6.1993
- (3) ^ 土地用途跟1993年6月21日勘測的土地用途有別
Indicates that the use is different from that revealed by the land use survey conducted by the Planning Department on 21.6.1993

圖例 LEGEND

- 申請地點(界線只作識別用)
APPLICATION SITE (BOUNDARY FOR IDENTIFICATION PURPOSE ONLY)
- V** 鄉村式發展
VILLAGE TYPE DEVELOPMENT
- U** 未決定用途
UNDETERMINED
- G.L.** 政府土地
GOVERNMENT LAND
- RES** 住用構築物
RESIDENTIAL STRUCTURES
- M/U** 荒地
UNUSED LAND
- A/C** 常耕農地
CULTIVATED AGRICULTURAL LAND
- 實地照片的觀景點
VIEWING POINT OF SITE PHOTO
- 丈量約份界線
D.D. BOUNDARY
- 入口/出口
INGRESS / EGRESS

平面圖 SITE PLAN

臨時貨倉及露天存放回收物料(包括塑膠和金屬物品)連附屬工場(為期3年)
元朗山下村丈量約份第120約地段第2704號A分段及B分段(部分)、
第2707號、第2708號、第2709號、第2710號及第2711號、
丈量約份第121約地段第1638號(部分)、第1640號(部分)、第1668號(部分)、第1669號(部分)、
第1671號、第1672號、第1673號(部分)、第1674號(部分)及第1676號A及B分段(部分)和毗連政府土地
TEMPORARY WAREHOUSE AND OPEN STORAGE FOR STORAGE OF RECYCLABLE MATERIALS
(PLASTIC AND METAL) WITH ANCILLARY WORKSHOP FOR A PERIOD OF 3 YEARS
LOTS 2704 S.A & S.B (PART), 2707, 2708, 2709, 2710 AND 2711 IN D.D.120,
LOTS 1638, 1639 (PART), 1640 (PART), 1668 (PART), 1669 (PART), 1671, 1672,
1673 (PART), 1674 (PART) AND 1676 S.A&B (PART) IN D.D.121 AND
ADJOINING GOVERNMENT LAND, SHAN HA TSUEN, YUEN LONG
SCALE 1 : 1 000 比例尺

米 METRES 20 0 20 40 米 METRES

本摘要圖於2018年9月26日擬備, 所根據的資料為測量圖編號 6-NW-14C
EXTRACT PLAN PREPARED ON 26.9.2018
BASED ON SURVEY SHEET No. 6-NW-14C

**規劃署
PLANNING
DEPARTMENT**



參考編號
REFERENCE No.
A/YL-TYST/895

**圖 PLAN
A-2**



圖例 LEGEND



申請地點(界線只作識別用)
APPLICATION SITE
(BOUNDARY FOR IDENTIFICATION
PURPOSE ONLY)

本摘要圖於2018年9月24日擬備，所根據的資料為地政總署於2018年3月13日拍得的航攝照片編號 E034877C
EXTRACT PLAN PREPARED ON 24.9.2018
BASED ON AERIAL PHOTO No.
E034877C TAKEN ON 13.3.2018
BY LANDS DEPARTMENT

航攝照片 AERIAL PHOTO

臨時貨倉及露天存放回收物料(包括塑膠和金屬物品)連附屬工場(為期3年)
元朗山下村丈量約份第120約地段第2704號A分段及B分段(部分)、
第2707號、第2708號、第2709號、第2710號及第2711號、
丈量約份第121約地段第1638號、第1639號(部分)、第1640號(部分)、第1668號(部分)、第1669號(部分)、
第1671號、第1672號、第1673號(部分)、第1674號(部分)及第1676號A及B分段(部分)和毗連政府土地
TEMPORARY WAREHOUSE AND OPEN STORAGE FOR STORAGE OF RECYCLABLE MATERIALS
(PLASTIC AND METAL) WITH ANCILLARY WORKSHOP FOR A PERIOD OF 3 YEARS
LOTS 2704 S.A & S.B (PART), 2707, 2708, 2709, 2710 AND 2711 IN D.D.120,
LOTS 1638, 1639 (PART), 1640 (PART), 1668 (PART), 1669 (PART), 1671, 1672,
1673 (PART), 1674 (PART) AND 1676 S.A&B (PART) IN D.D.121 AND
ADJOINING GOVERNMENT LAND, SHAN HA TSUEN, YUEN LONG

規劃署
PLANNING
DEPARTMENT



參考編號
REFERENCE No.
A/YL-TYST/895

圖 PLAN
A-3



實地照片 SITE PHOTOS

臨時貨倉及露天存放回收物料(包括塑膠和金屬物品)連附屬工場 (為期3年)
 元朗山下村丈量約份第120約地段第2704號A分段及B分段(部分)、
 第2707號、第2708號、第2709號、第2710號及第2711號、
 丈量約份第121約地段第1638號、第1639號(部分)、第1640號(部分)、第1668號(部分)、第1669號(部分)、
 第1671號、第1672號、第1673號(部分)、第1674號(部分)及第1676號A及B分段(部分)和毗連政府土地
 TEMPORARY WAREHOUSE AND OPEN STORAGE FOR STORAGE OF RECYCLABLE MATERIALS
 (PLASTIC AND METAL) WITH ANCILLARY WORKSHOP FOR A PERIOD OF 3 YEARS
 LOTS 2704 S.A & S.B (PART), 2707, 2708, 2709, 2710 AND 2711 IN D.D.120,
 LOTS 1638, 1639 (PART), 1640 (PART), 1668 (PART), 1669 (PART), 1671, 1672,
 1673 (PART), 1674 (PART) AND 1676 S.A&B (PART) IN D.D.121 AND
 ADJOINING GOVERNMENT LAND, SHAN HA TSUEN, YUEN LONG

規劃署
**PLANNING
 DEPARTMENT**



本圖於2018年9月26日擬備，所根據的資料為攝於2018年9月24日的實地照片
 PLAN PREPARED ON 26.9.2018
 BASED ON SITE PHOTOS
 TAKEN ON 24.9.2018

參考編號
 REFERENCE No.
A/YL-TYST/895

圖 PLAN
A-4a



申請地點
APPLICATION SITE



申請地點
APPLICATION SITE

實地照片 SITE PHOTOS

本圖於2018年9月26日擬備，所根據的資料為攝於2018年9月24日的實地照片
PLAN PREPARED ON 26.9.2018
BASED ON SITE PHOTOS
TAKEN ON 24.9.2018

臨時貨倉及露天存放回收物料(包括塑膠和金屬物品)連附屬工場(為期3年)
元朗山下村丈量約份第120約地段第2704號A分段及B分段(部分)、
第2707號、第2708號、第2709號、第2710號及第2711號、
丈量約份第121約地段第1638號、第1639號(部分)、第1640號(部分)、第1668號(部分)、第1669號(部分)、
第1671號、第1672號、第1673號(部分)、第1674號(部分)及第1676號A及B分段(部分)和毗連政府土地
TEMPORARY WAREHOUSE AND OPEN STORAGE FOR STORAGE OF RECYCLABLE MATERIALS
(PLASTIC AND METAL) WITH ANCILLARY WORKSHOP FOR A PERIOD OF 3 YEARS
LOTS 2704 S.A & S.B (PART), 2707, 2708, 2709, 2710 AND 2711 IN D.D.120,
LOTS 1638, 1639 (PART), 1640 (PART), 1668 (PART), 1669 (PART), 1671, 1672,
1673 (PART), 1674 (PART) AND 1676 S.A&B (PART) IN D.D.121 AND
ADJOINING GOVERNMENT LAND, SHAN HA TSUEN, YUEN LONG

規劃署
PLANNING
DEPARTMENT



參考編號
REFERENCE No.
A/YL-TYST/895

圖 PLAN
A-4b

6



申請地點
APPLICATION SITE

7



申請地點
APPLICATION SITE

實地照片 SITE PHOTOS

本圖於2018年9月26日擬備，所根據的資料為攝於2018年9月24日的實地照片
PLAN PREPARED ON 26.9.2018
BASED ON SITE PHOTOS
TAKEN ON 24.9.2018

臨時貨倉及露天存放回收物料(包括塑膠和金屬物品)連附屬工場(為期3年)
元朗山下村丈量約份第120約地段第2704號A分段及B分段(部分)、
第2707號、第2708號、第2709號、第2710號及第2711號、
丈量約份第121約地段第1638號、第1639號(部分)、第1640號(部分)、第1668號(部分)、第1669號(部分)、
第1671號、第1672號、第1673號(部分)、第1674號(部分)及第1676號A及B分段(部分)和毗連政府土地
TEMPORARY WAREHOUSE AND OPEN STORAGE FOR STORAGE OF RECYCLABLE MATERIALS
(PLASTIC AND METAL) WITH ANCILLARY WORKSHOP FOR A PERIOD OF 3 YEARS
LOTS 2704 S.A & S.B (PART), 2707, 2708, 2709, 2710 AND 2711 IN D.D.120,
LOTS 1638, 1639 (PART), 1640 (PART), 1668 (PART), 1669 (PART), 1671, 1672,
1673 (PART), 1674 (PART) AND 1676 S.A&B (PART) IN D.D.121 AND
ADJOINING GOVERNMENT LAND, SHAN HA TSUEN, YUEN LONG

規劃署
PLANNING
DEPARTMENT



參考編號
REFERENCE No.
A/YL-TYST/895

圖 PLAN
A-4c