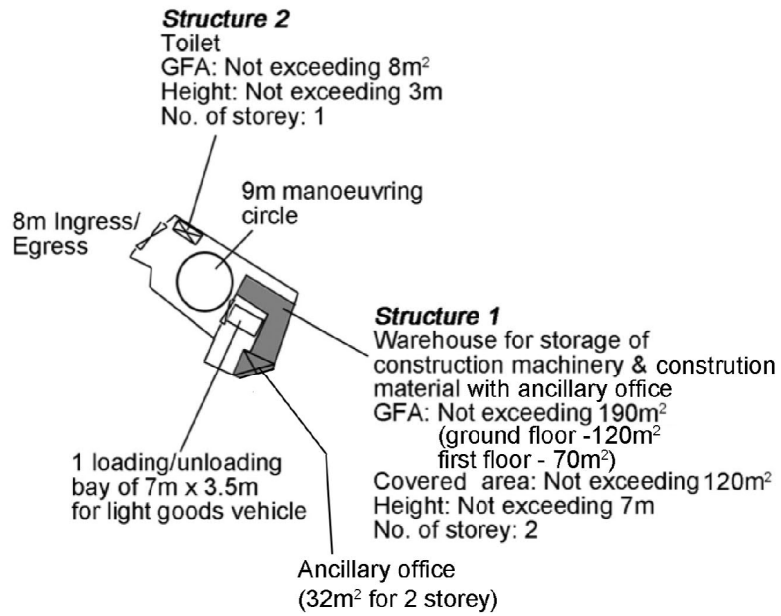



<p>Project 項目名稱: Proposed Temporary Warehouse for Storage of Construction Machinery & Construction Material with Ancillary Site Office for a Period of 3 Years at Lots 2813(Part), 2814(Part) in D.D. 120 & Adjoining Government Land, Yuen Long, N.T.</p>	<p>Drawing Title 圖目: Location Plan</p>	<p>Remarks 備註: ●●● Vehicular access leading from Kung Um Road</p>
	<p>Drawing No. 圖號: Figure 2</p>	<p>Scale 比例: 1:7500</p>

(摘錄自申請人於 21.8.2019 呈交的申請書)
(Extract from Applicant's Submission of 21.8.2019)

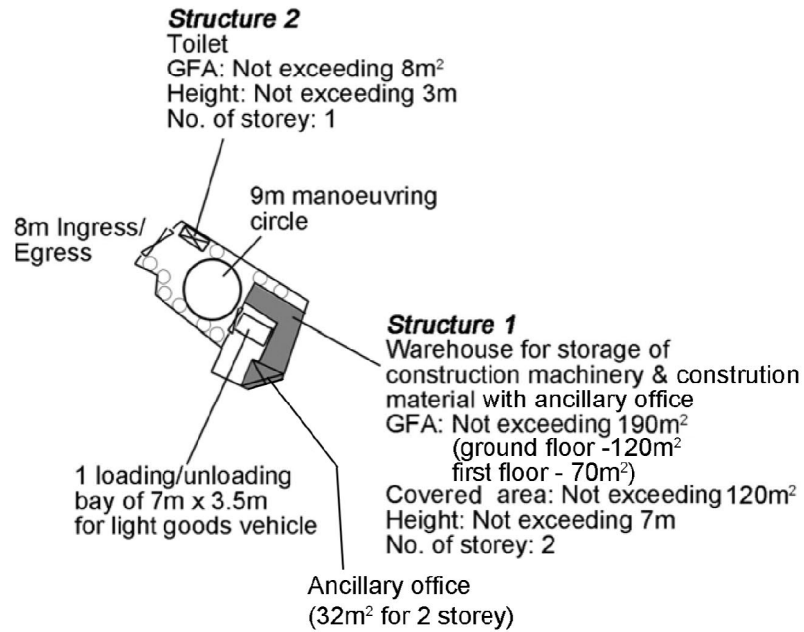
<p>參考編號 REFERENCE No. AYL-TYST/981</p>	<p>繪圖 DRAWING A-1</p>
--	---------------------------



Project 項目名稱: Proposed Temporary Warehouse for Storage of Construction Machinery & Construction Material with Ancillary Site Office for a Period of 3 Years at Lots 2813(Part), 2814(Part) in D.D. 120 & Adjoining Government Land, Yuen Long, N.T.	Drawing Title 圖目: Proposed Layout Plan	Remarks 備註:  2 storey
	Drawing No. 圖號: Figure 3	Scale 比例: 4:1000

(摘錄自申請人於 21.8.2019 呈交的申請書)
(Extract from Applicant's Submission of 21.8.2019)

參考編號 REFERENCE No. A/YL-TYST/981	繪圖 DRAWING A-2
--	-------------------

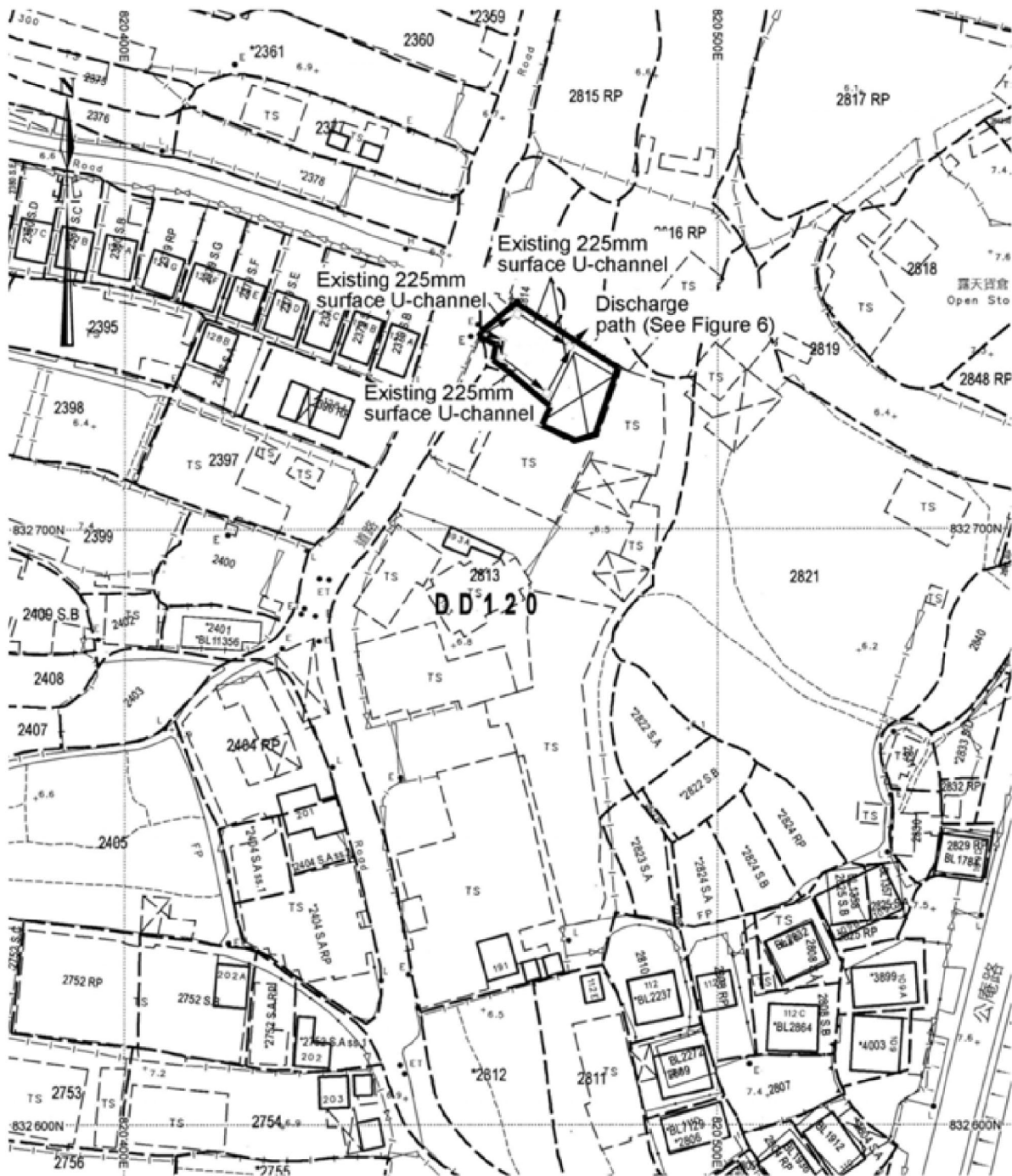


Tree	Approximate Height	Spacing	Quantity
○ Existing trees to be preserved	3m to 3.5m	3m	9

Project 項目名稱: Proposed Temporary Warehouse for Storage of Construction Machinery & Construction Material with Ancillary Site Office for a Period of 3 Years at Lots 2813(Part), 2814(Part) in D.D. 120 & Adjoining Government Land, Yuen Long, N.T.	Drawing Title 圖目: Proposed Landscape & Tree Preservation Plan	Remarks 備註: ■ 2 storey
	Drawing No. 圖號: Figure 4	Scale 比例: 1:1000

(摘錄自申請人於 21.8.2019 呈交的申請書)
(Extract from Applicant's Submission of 21.8.2019)

參考編號 REFERENCE No. AYL-TYST/981	繪圖 DRAWING A-3
---------------------------------------	-------------------



Project 項目名稱:

Proposed Temporary Warehouse for Storage of Construction Machinery & Construction Material with Ancillary Site Office for a Period of 3 Years at Lots 2813(Part), 2814(Part) in D.D. 120 & Adjoining Government Land, Yuen Long, N.T.

Drawing Title 圖目:

As-built Drainage Plan

Remarks 備註:

- Existing catchpit
- Existing warehouse

Drawing No. 圖號:

Figure 5

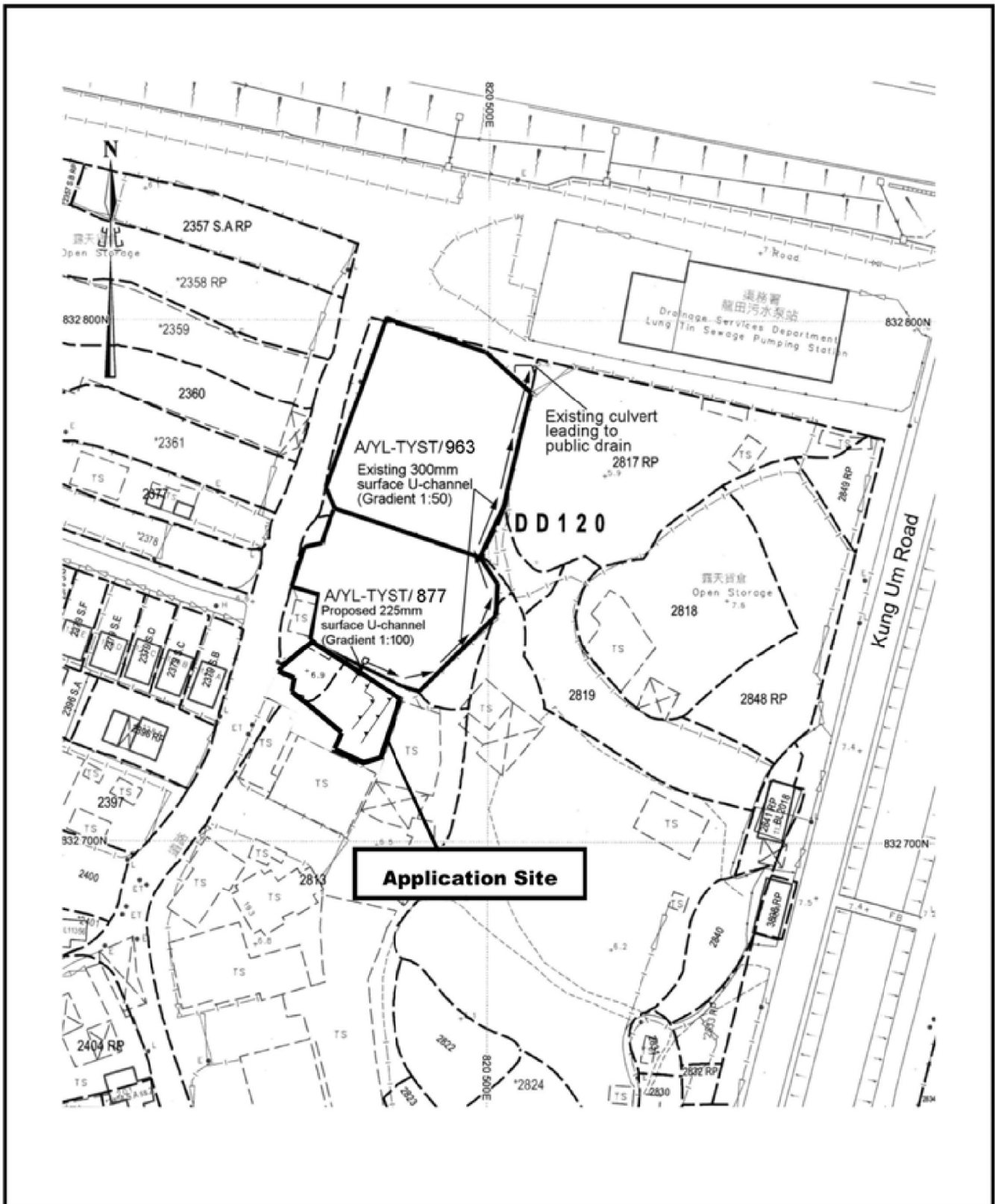
Scale 比例:

1:1000

(摘錄自申請人於 21.8.2019 提交的申請書)
(Extract from Applicant's Submission of 21.8.2019)

參考編號
REFERENCE No.
AYL-TYST/981

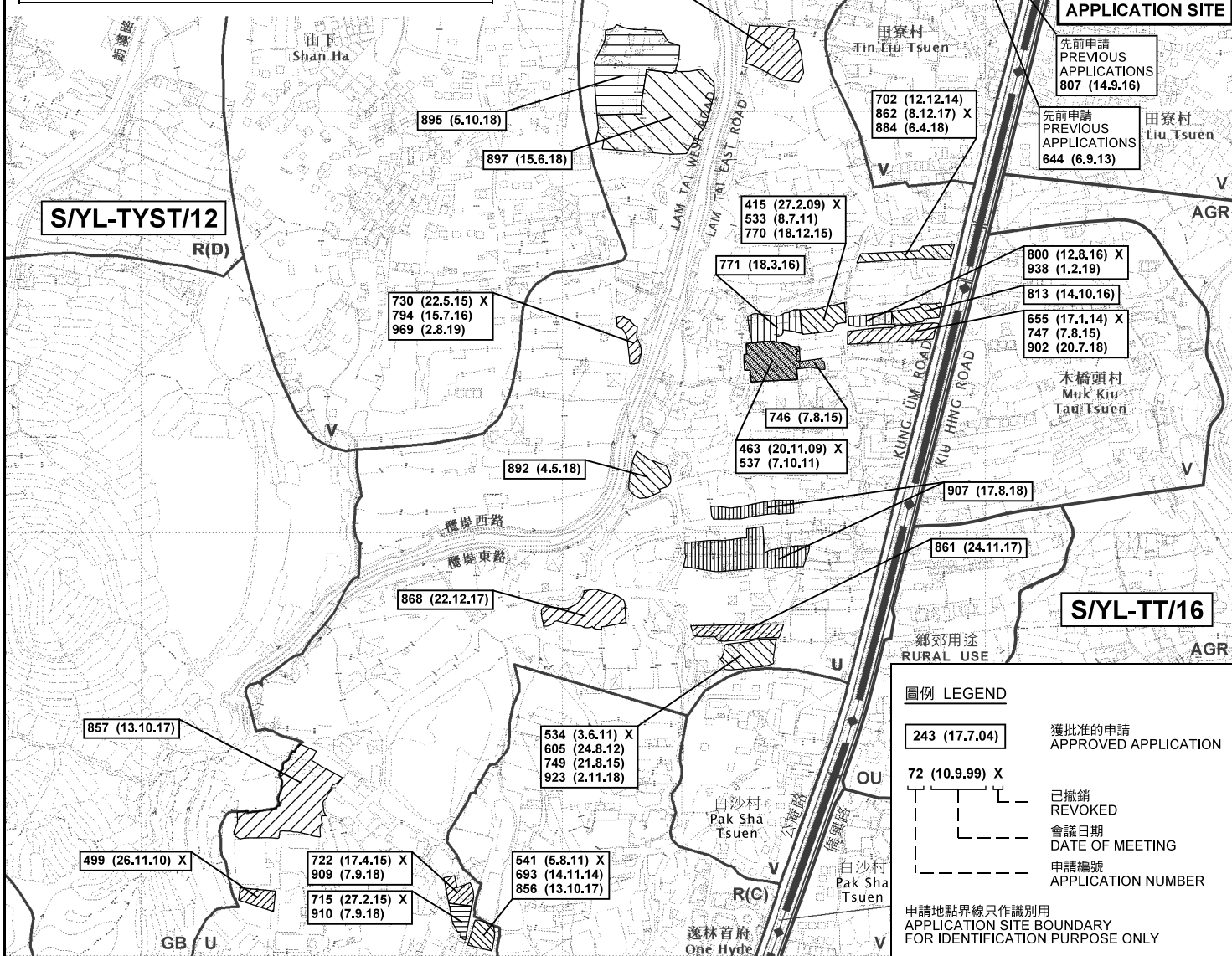
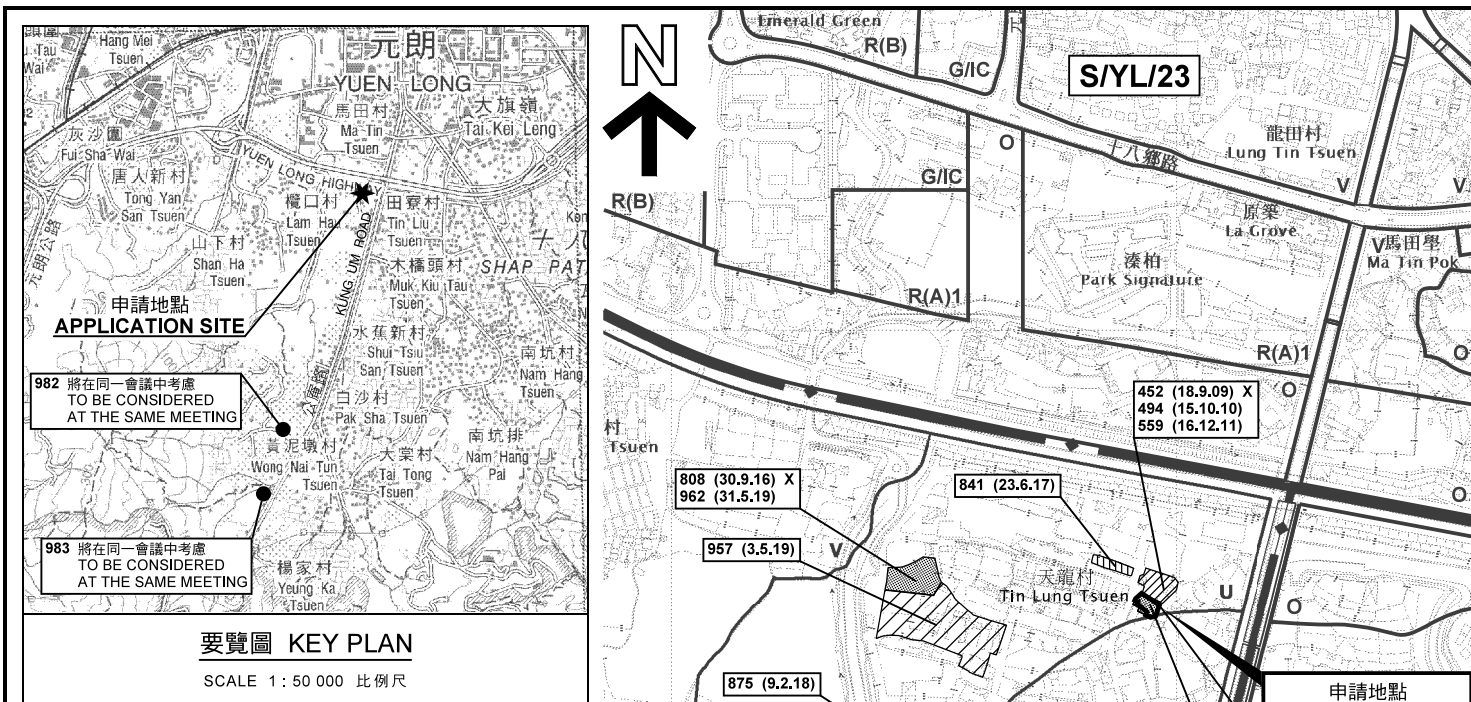
繪圖 DRAWING
A-4



<p>Project 項目名稱: Proposed Temporary Warehouse for Storage of Construction Machinery & Construction Material with Ancillary Site Office for a Period of 3 Years at Lots 2813(Part), 2814(Part) in D.D. 120 & Adjoining Government Land, Yuen Long, N.T.</p>	<p>Drawing Title 圖目: Proposed Discharge Path Leading to Public Drain</p>	<p>Remarks 備註: <input type="checkbox"/> Existing catchpit</p>
	<p>Drawing No. 圖號: Figure 6</p>	<p>Scale 比例: 1:1000</p>

(摘錄自申請人於 21.8.2019 提交的申請書)
 (Extract from Applicant's Submission of 21.8.2019)

<p>參考編號 REFERENCE No. AYL-TYST/981</p>	<p>繪圖 DRAWING A-5</p>
---	-----------------------------------



位置圖 LOCATION PLAN

臨時貨倉存放建築機械及建築材料連附屬地辦公室 (為期3年)
元朗唐人新村丈量約份第120約地段第2813號(部分)
及第2814號(部分)和毗連政府土地

TEMPORARY WAREHOUSE FOR STORAGE OF CONSTRUCTION MACHINERY AND CONSTRUCTION MATERIAL WITH ANCILLARY SITE OFFICE FOR A PERIOD OF 3 YEARS
LOTS 2813 (PART) AND 2814 (PART) IN D.D.120 AND ADJOINING GOVERNMENT LAND, TONG YAN SAN TSUEN, YUEN LONG

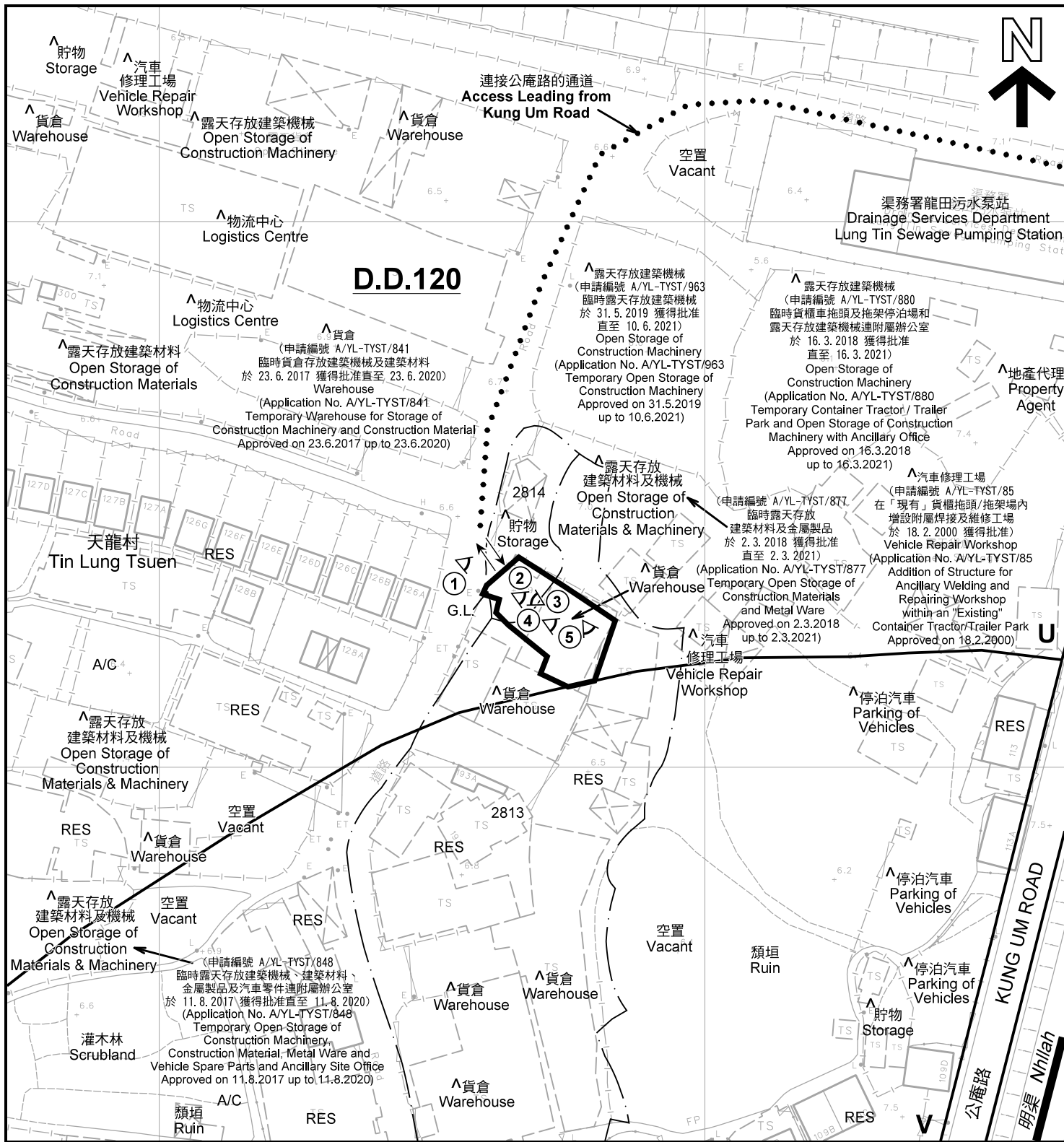
SCALE 1 : 7 500 比例尺

米 100 0 100 200 300 米
METRES

規劃署 PLANNING DEPARTMENT

參考編號 REFERENCE No. AYL-TYST/981

圖 PLAN A-1



註釋 Notes :

- (1) 2019年9月3日勘測的土地用途
Land uses shown on this plan are in accordance with the land use survey conducted by the Planning Department on 3.9.2019
- (2) * 土地用途跟1993年6月21日及7月1日勘測的土地用途一致
Indicates that the use is the same as that revealed by the land use survey conducted by the Planning Department on 21.6.1993 and 1.7.1993
- (3) ^ 土地用途跟1993年6月21日及7月1日勘測的土地用途有別
Indicates that the use is different from that revealed by the land use survey conducted by the Planning Department on 21.6.1993 and 1.7.1993

圖例 LEGEND

- 申請地點(界線只作識別用)
APPLICATION SITE (BOUNDARY FOR IDENTIFICATION PURPOSE ONLY)
- 鄉村式發展
VILLAGE TYPE DEVELOPMENT
- 未決定用途
UNDETERMINED
- 政府土地
GOVERNMENT LAND
- 住用構築物
RESIDENTIAL STRUCTURES
- 常耕農地
CULTIVATED AGRICULTURAL LAND
- 實地照片的觀景點
VIEWING POINT OF SITE PHOTO
- 入口/出口
INGRESS / EGRESS

平面圖 SITE PLAN

臨時貨倉存放建築機械及建築材料連附屬地辦公室 (為期3年)
元朗唐人新村丈量約份第120約地段第2813號(部分)
及第2814號(部分)和毗連政府土地

TEMPORARY WAREHOUSE FOR STORAGE OF
CONSTRUCTION MACHINERY AND CONSTRUCTION MATERIAL WITH
ANCILLARY SITE OFFICE FOR A PERIOD OF 3 YEARS
LOTS 2813 (PART) AND 2814 (PART) IN D.D.120 AND ADJOINING
GOVERNMENT LAND, TONG YAN SAN TSUEN, YUEN LONG

SCALE 1 : 1 000 比例尺

米 20 0 20 40 米
METRES

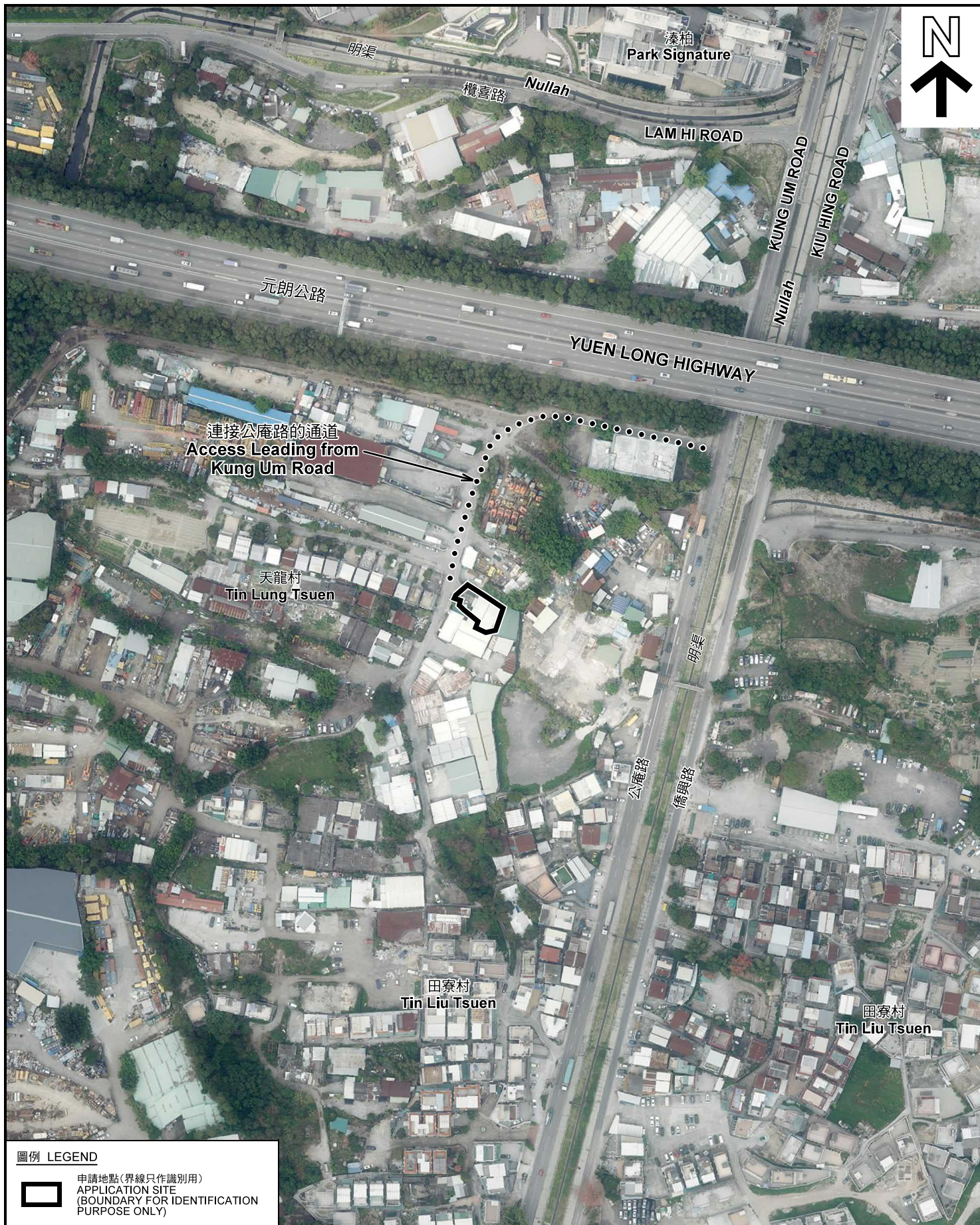
規劃署
PLANNING
DEPARTMENT



參考編號
REFERENCE No.
AYL-TYST/981

圖 PLAN
A-2

本摘要圖於2019年10月4日擬備, 所根據的
資料為測量圖編號 6-NW-14D
EXTRACT PLAN PREPARED ON 4.10.2019
BASED ON SURVEY SHEET No.
6-NW-14D



圖例 LEGEND



申請地點(界線只作識別用)
APPLICATION SITE
(BOUNDARY FOR IDENTIFICATION
PURPOSE ONLY)

本摘要圖於2019年10月4日擬備，所根據的資料為地政總署於2018年3月13日拍得的航攝照片編號 E034879C
EXTRACT PLAN PREPARED ON 4.10.2019
BASED ON AERIAL PHOTO No.
E034879C TAKEN ON 13.3.2018
BY LANDS DEPARTMENT

航攝照片 AERIAL PHOTO

臨時貨倉存放建築機械及建築材料連附屬場地辦公室 (為期3年)
元朗唐人新村丈量約份第120約地段第2813號(部分)
及第2814號(部分)和毗連政府土地
TEMPORARY WAREHOUSE FOR STORAGE OF
CONSTRUCTION MACHINERY AND CONSTRUCTION MATERIAL WITH
ANCILLARY SITE OFFICE FOR A PERIOD OF 3 YEARS
LOTS 2813 (PART) AND 2814 (PART) IN D.D.120 AND ADJOINING
GOVERNMENT LAND, TONG YAN SAN TSUEN, YUEN LONG

規劃署
PLANNING
DEPARTMENT



參考編號
REFERENCE No.
AYL-TYST/981

圖 PLAN
A-3

申請地點
APPLICATION SITE



①
連接公庵路的通道
Access Leading from
Kung Um Road



②
申請地點
APPLICATION SITE



③
申請地點
APPLICATION SITE

實地照片 SITE PHOTOS

本圖於2019年10月4日擬備，所根據的資料為攝於2019年8月30日的實地照片
PLAN PREPARED ON 4.10.2019
BASED ON SITE PHOTOS
TAKEN ON 30.8.2019

臨時貨倉存放建築機械及建築材料連附屬地辦公室（為期3年）
元朗唐人新村丈量約份第120約地段第2813號（部分）
及第2814號（部分）和毗連政府土地
TEMPORARY WAREHOUSE FOR STORAGE OF
CONSTRUCTION MACHINERY AND CONSTRUCTION MATERIAL WITH
ANCILLARY SITE OFFICE FOR A PERIOD OF 3 YEARS
LOTS 2813 (PART) AND 2814 (PART) IN D.D.120 AND ADJOINING
GOVERNMENT LAND, TONG YAN SAN TSUEN, YUEN LONG

規劃署
PLANNING
DEPARTMENT



參考編號
REFERENCE No.
AYL-TYST/981

圖 PLAN
A-4a



申請地點
APPLICATION SITE



申請地點 (2樓)
APPLICATION SITE (2/F)

實地照片 SITE PHOTOS

本圖於2019年9月24日擬備，所根據的資料為攝於2019年8月30日的實地照片
PLAN PREPARED ON 24.9.2019
BASED ON SITE PHOTOS
TAKEN ON 30.8.2019

臨時貨倉存放建築機械及建築材料連附屬地辦公室（為期3年）
元朗唐人新村丈量約份第120約地段第2813號（部分）
及第2814號（部分）和毗連政府土地
TEMPORARY WAREHOUSE FOR STORAGE OF
CONSTRUCTION MACHINERY AND CONSTRUCTION MATERIAL WITH
ANCILLARY SITE OFFICE FOR A PERIOD OF 3 YEARS
LOTS 2813 (PART) AND 2814 (PART) IN D.D.120 AND ADJOINING
GOVERNMENT LAND, TONG YAN SAN TSUEN, YUEN LONG

規劃署
PLANNING
DEPARTMENT



參考編號
REFERENCE No.
AYL-TYST/981

圖 PLAN
A-4b