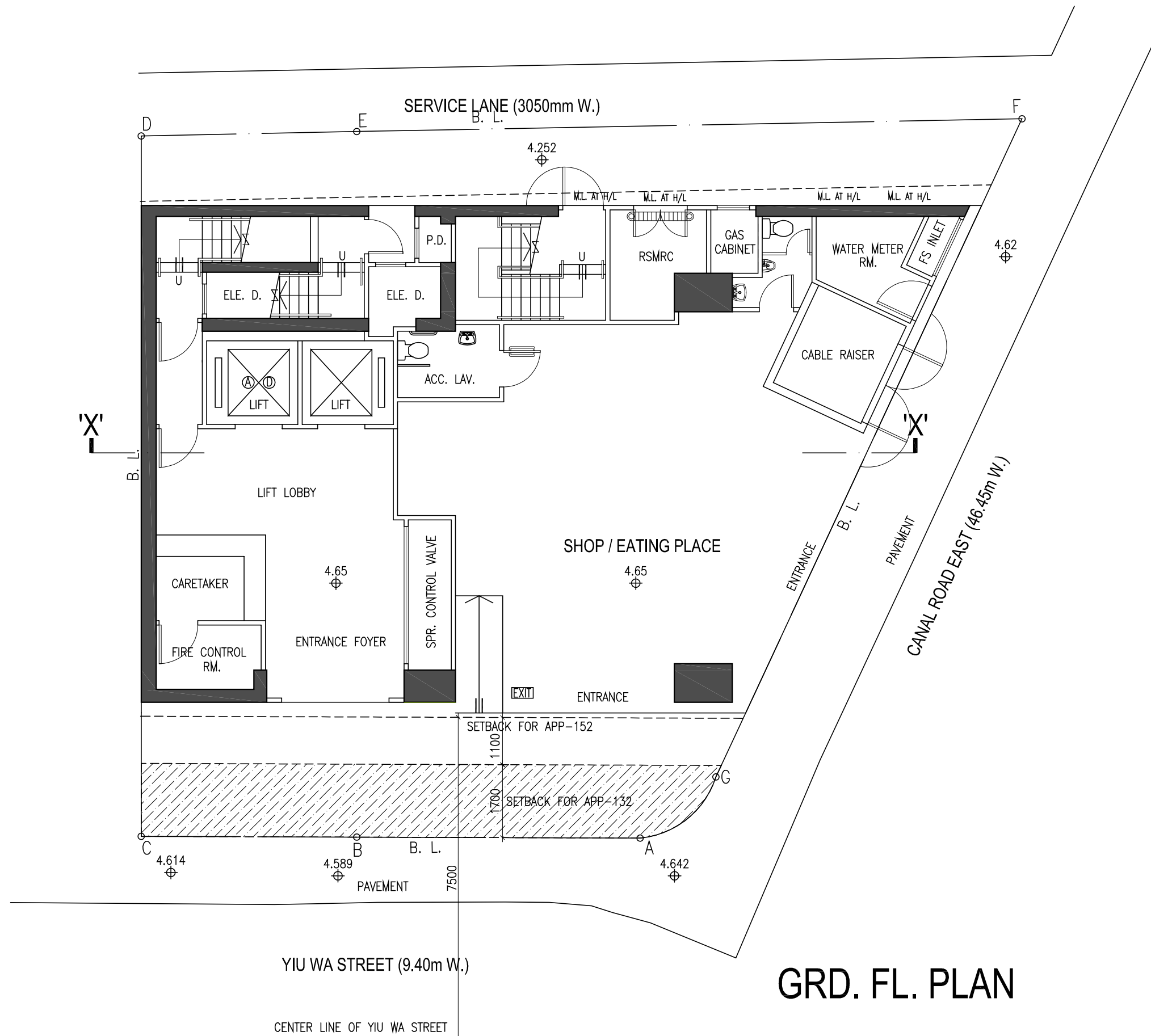


# **Attachment 5**

## **Revised Development Scheme**



# GRD. FL. PLAN

B.L.D. REF. NO.  
F.P.B. NO.

---

PROJECT  
**PROPOSED COMPOSITE BUILDING**  
AT Nos. 42-44 YIU WAH STREET,  
CAUSEWAY BAY  
HONG KONG

---

PLAN  
**GRD. FL. PLAN**

---

SCALE  
1 : 100 (A3)  
1 : 200 (A4)

---

AUTHORIZED PERSON  
**T.K. TSUI & ASSOCIATES LIMITED**  
3/F, HING LUNG COMMERCIAL BUILDING, 68 BORNHAM STRAND, HONG KONG  
TEL: 2541-8000 FAX: 2541-8189

---

PLANNER  
**DeSPACE (International) Limited**  
Suite 1601, 16/F, Tower 2, Lippo Centre, 89 Queenway, Admiralty, Hong Kong  
TEL: 3590-6333 FAX: 3590-6233

---

ENVIRONMENTAL CONSULTANT  
**RAMBOLL HONG KONG LIMITED**  
21/F, BEA HARBOUR VIEW CENTRE, 56 GLOUCESTER ROAD, WAI CHAI, HONG KONG  
TEL: 3465-2888 FAX: 3465-2899

---

TRAFFIC CONSULTANT  
**CKM ASIA LIMITED**  
21/F, Methodist House, 36 Hennessy Road, Wan Chai, Hong Kong  
TEL: 2522-8899 FAX: 2522-4343

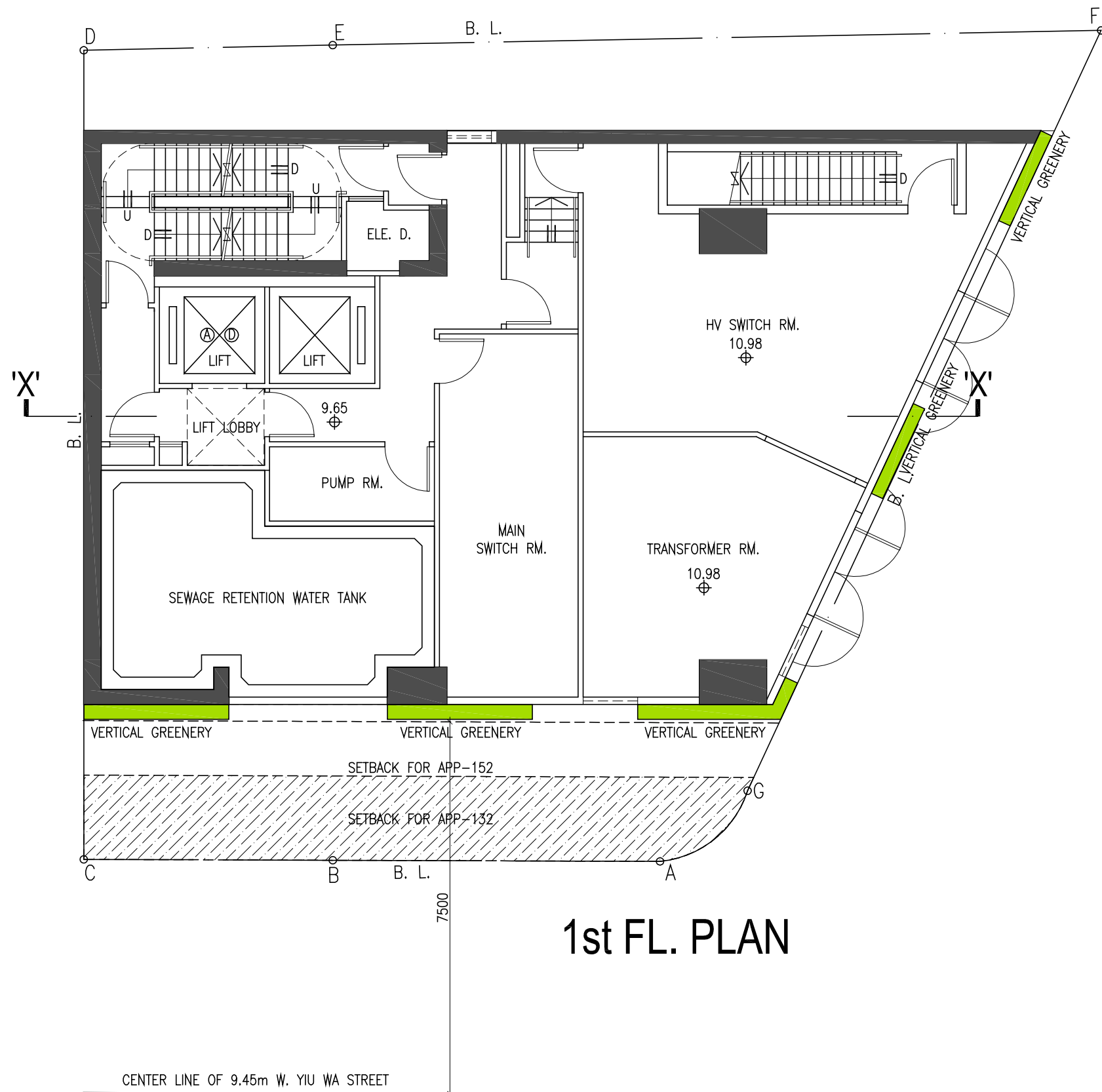
---

DESIGN CONSULTANT  
**LEO DESIGN LIMITED**  
6/F, HING LUNG COMMERCIAL BUILDING, 68 BORNHAM STRAND, HONG KONG  
TEL: 2535-8111 EMAIL: leo@leodesign.com.hk

---

DRAWN \_\_\_\_\_ CHECKED \_\_\_\_\_

DRAWING NO.	DATE	REVISION	BY
FIG-02	A	26/02/2026	
	B	05/03/2026	E
	C	24/03/2026	
	D	10/04/2026	
		05/06/2026	



# 1st FL. PLAN

B.L.D. REF. NO.

F.P.B. NO.

PROJECT

PROPOSED COMPOSITE BUILDING  
AT Nos. 42-44 YIU WAH STREET,  
CAUSEWAY BAY  
HONG KONG

PLAN

1st FL. PLAN

SCALE

AUTHORIZED PERSON

**T.K. TSUI & ACCOSIATES LIMITED**  
3/F, HING LUNG COMMERCIAL BUILDING, 68 BORNHAM STRAND, HONG KONG

TEL: 2541-8000 FAX: 2541-8189

PLANNER

**DeSPACE (International) Limited**  
Suite 1601, 16/F, Tower 2, Lippo Centre, 89 Queensway, Admiralty, Hong Kong

TEL: 3590-6333 FAX: 3590-6233

ENVIRONMENTAL CONSULTANT

**RAMBOLL HONG KONG LIMITED**  
21/F, BEA HARBOUR VIEW CENTRE, 56 GLOUCESTER ROAD, WAI CHAI, HONG KONG

TEL: 3465-2888 FAX: 3465-2899

TRAFFIC CONSULTANT

**CKM ASIA LIMITED**  
21/F, Methodist House, 36 Hennessy Road, Wan Chai, Hong Kong

TEL: 2522-8899 FAX: 2522-4343

DESIGN CONSULTANT

**LEO DESIGN LIMITED**  
8/F, HING LUNG COMMERCIAL BUILDING, 68 BORNHAM STRAND, HONG KONG

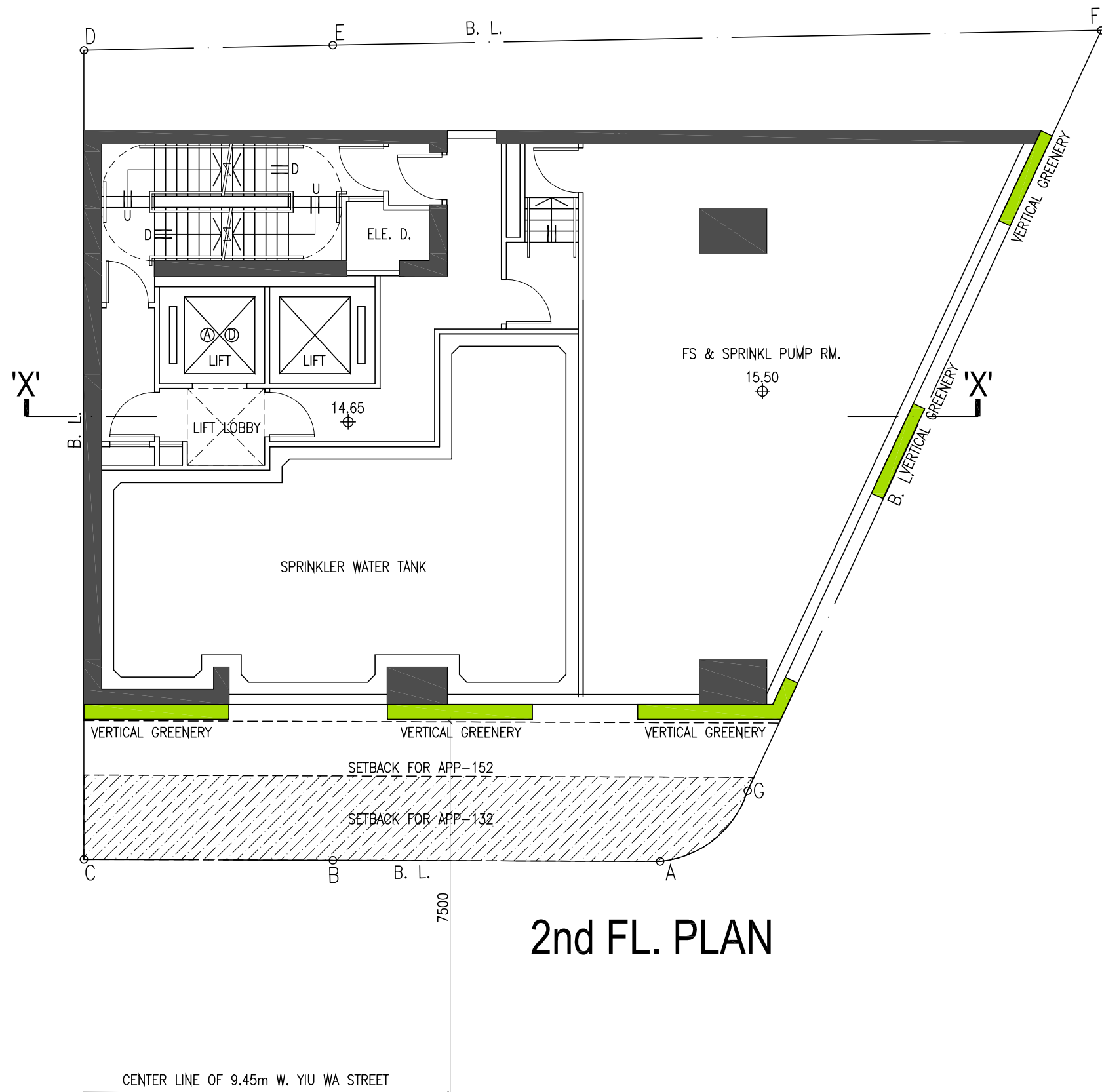
TEL: 2535-8111

E-MAIL: leo@leoedesign.com.hk

DRAWN

CHECKED

DRAWING NO.	DATE	REVISION	BY
FIG-03	A	26/02/2026	
	B	05/03/2026	E
	C	24/03/2026	
	D	10/04/2026	
		05/06/2026	



B.L.D. REF. NO.

F.P.B. NO.

PROJECT

PROPOSED COMPOSITE BUILDING  
AT Nos. 42-44 YIU WAH STREET,  
CAUSEWAY BAY  
HONG KONG

PLAN

2nd FL. PLAN

SCALE

AUTHORIZED PERSON

**T.K. TSUI & ACCOSIATES LIMITED**  
3/F, HING LUNG COMMERCIAL BUILDING, 68 SOHAM STRAND, HONG KONG

TEL: 2541-8000 FAX: 2541-8189

PLANNER

**DeSPACE (International) Limited**  
Suite 1601, 16/F, Tower 2, Lippo Centre, 89 Queenway, Admiralty, Hong Kong

TEL: 3590-6333 FAX: 3590-6233

ENVIRONMENTAL CONSULTANT

**RAMBOLL HONG KONG LIMITED**  
21/F, BEA HARBOUR VIEW CENTRE, 56 GLOUCESTER ROAD, WAI CHAI, HONG KONG

TEL: 3465-2888 FAX: 3465-2899

TRAFFIC CONSULTANT

**CKM ASIA LIMITED**  
21/F, Methodist House, 36 Hennessy Road, Wan Chai, Hong Kong

TEL: 2522-8888 FAX: 2522-4343

DESIGN CONSULTANT

**LEO DESIGN LIMITED**  
6/F, HING LUNG COMMERCIAL BUILDING, 68 SOHAM STRAND, HONG KONG

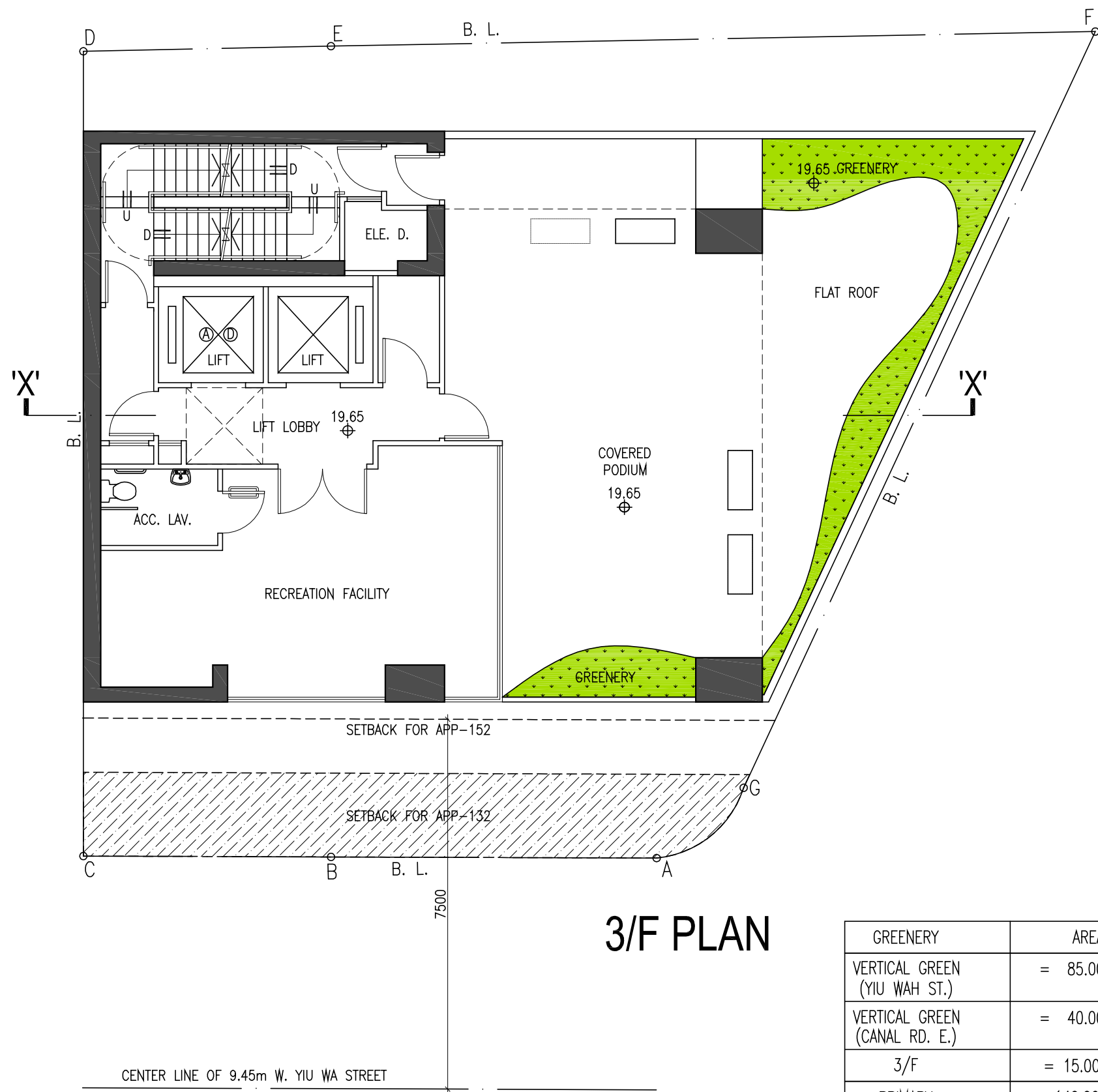
TEL: 2535-8111

E-MAIL: leo@leo-design.com.hk

DRAWN

CHECKED

DRAWING NO.	DATE	REVISION	BY
FIG-04	A	26/02/2026	
	B	05/03/2026	E
	C	24/03/2026	
	D	10/04/2026	
		05/06/2026	



# 3/F PLAN

GREENERY	AREA	PRIMARY	OVERALL
VERTICAL GREEN (YIU WAH ST.)	= 85.00s.m.	✓	✓
VERTICAL GREEN (CANAL RD. E.)	= 40.00s.m.	✓	✓
3/F	= 15.00s.m.	✓	✓
PRIMARY	= 140.00s.m. / 274.20 = 51.06% > 10%		
OVERALL	= 140.00s.m. / 274.20 = 51.06% > 20%		

B.L.D. REF. NO.  
F.P.B. NO.

---

PROJECT  
**PROPOSED COMPOSITE BUILDING  
AT Nos. 42-44 YIU WAH STREET,  
CAUSEWAY BAY  
HONG KONG**

---

PLAN  
**3rd FL. PLAN**

---

SCALE

---

AUTHORIZED PERSON  
**T.K. TSUI & ACCOSIATES LIMITED**  
3/F, HING LUNG COMMERCIAL BUILDING, 68 BORNHAM STRAND, HONG KONG  
TEL: 2541-8000 FAX: 2541-8189

---

PLANNER  
**DeSPACE (International) Limited**  
Suite 1601, 16/F, Tower 2, Lippo Centre, 89 Queensway, Admiralty, Hong Kong  
TEL: 3590-6333 FAX: 3590-6233

---

ENVIRONMENTAL CONSULTANT  
**RAMBOLL HONG KONG LIMITED**  
21/F, BEA HARBOUR VIEW CENTRE, 56 GLOUCESTER ROAD, WAI CHAI, HONG KONG  
TEL: 3465-2888 FAX: 3465-2899

---

TRAFFIC CONSULTANT  
**CKM ASIA LIMITED**  
21/F, Methodist House, 36 Hennessy Road, Wan Chai, Hong Kong  
TEL: 2525-8888 FAX: 2525-4343

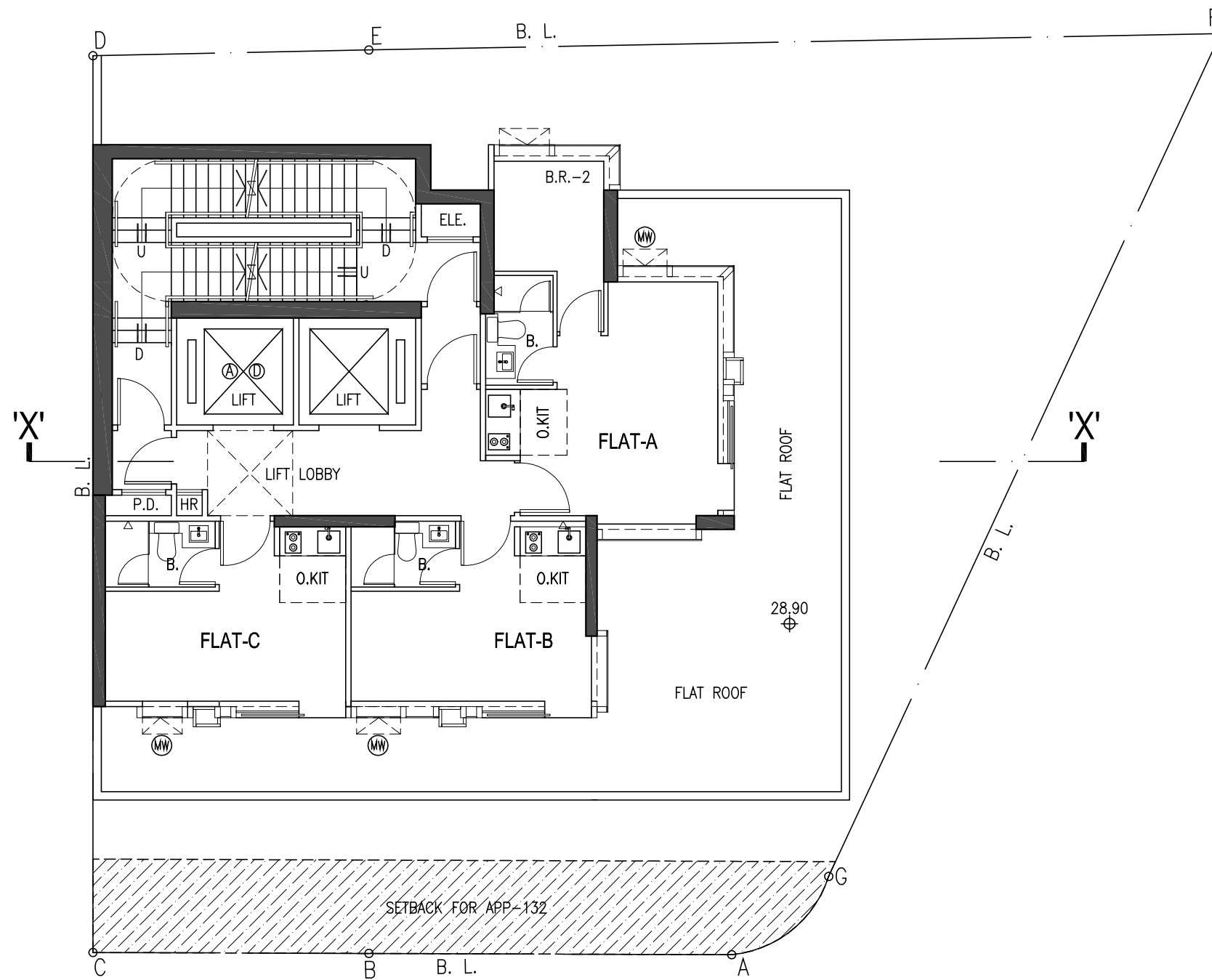
---

DESIGN CONSULTANT  
**LEO DESIGN LIMITED**  
161 HING LUNG COMMERCIAL BUILDING, 68 BORNHAM STRAND, HONG KONG  
TEL: 2535-8911 EMAIL: leo@leo-design.com.hk

---

DRAWN CHECKED

DRAWING NO.	DATE	26/02/2026	
<b>FIG-05</b>	A	05/03/2026	E
	B	24/03/2026	
	C	10/04/2026	
	D	05/06/2026	



# 5/F PLAN

(NO 4/F)

(MW) MAINTENANCE WINDOW

B.L.D. REF. NO.

F.P.B. NO.

PROJECT

PROPOSED COMPOSITE BUILDING  
AT Nos. 42-44 YIU WAH STREET,  
CAUSEWAY BAY  
HONG KONG

PLAN

5th FL. PLAN

SCALE

AUTHORIZED PERSON

**T.K. TSUI & ACCOSIATES LIMITED**  
3/F, HING LUNG COMMERCIAL BUILDING, 68 BORNHAM STRAND, HONG KONG

TEL: 2541-8000 FAX: 2541-8189

PLANNER

**DeSPACE (International) Limited**  
Suite 1601, 16/F, Tower 2, Lippo Centre, 89 Queensway, Admiralty, Hong Kong

TEL: 3590-6333 FAX: 3590-6233

ENVIRONMENTAL CONSULTANT

**RAMBOLL HONG KONG LIMITED**  
21/F, BEA HARBOUR VIEW CENTRE, 56 GLOUCESTER ROAD, WAI CHAI, HONG KONG

TEL: 3465-2888 FAX: 3465-2899

TRAFFIC CONSULTANT

**CKM ASIA LIMITED**  
21/F, Methodist House, 36 Hennessy Road, Wan Chai, Hong Kong

TEL: 2522-8888 FAX: 2522-4343

DESIGN CONSULTANT

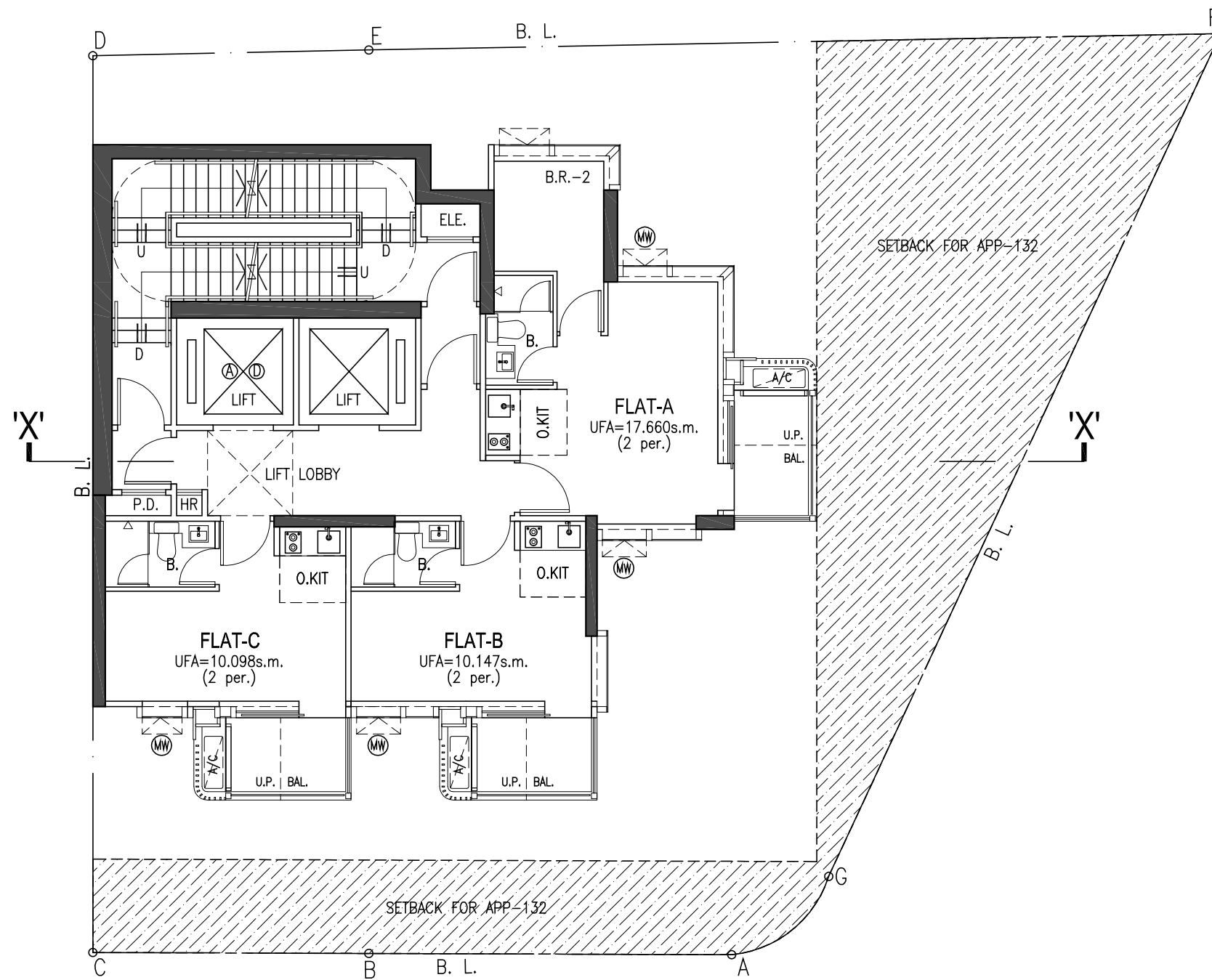
**LEO DESIGN LIMITED**  
6/F, HING LUNG COMMERCIAL BUILDING, 68 BORNHAM STRAND, HONG KONG

TEL: 2535-8111

E-MAIL: leo@leoedg.com.hk

DRAWN CHECKED

DRAWING NO.	DATE	REVISION	BY
FIG-06	A	28/02/2026	
	B	05/03/2026	E
	C	24/03/2026	
	D	10/04/2026	
		05/06/2026	



# 6-29/F PLAN

(NO 13/F, 14/F & 24/F)

MAINTENANCE WINDOW

B.L.D. REF. NO.

F.P.B. NO.

PROJECT

PROPOSED COMPOSITE BUILDING  
AT Nos. 42-44 YIU WAH STREET,  
CAUSEWAY BAY  
HONG KONG

PLAN

6th-29th FL. PLAN

SCALE

AUTHORIZED PERSON

**T.K. TSUI & ACCOSIATES LIMITED**

3/F, HING LUNG COMMERCIAL BUILDING, 68 BONHAY STRAND, HONG KONG

TEL: 2541-8000 FAX: 2541-8189

PLANNER

**DeSPACE (International) Limited**

Suite 1601, 16/F, Tower 2, Lippo Centre, 89 Queensway, Admiralty, Hong Kong

TEL: 3590-6333 FAX: 3590-6233

ENVIRONMENTAL CONSULTANT

**RAMBOLL HONG KONG LIMITED**

21/F, BEA HARBOUR VIEW CENTRE, 56 GLOUCESTER ROAD, WAI CHAI, HONG KONG

TEL: 3465-2888 FAX: 3465-2899

TRAFFIC CONSULTANT

**CKM ASIA LIMITED**

21/F, Methodist House, 36 Hennessy Road, Wan Chai, Hong Kong

TEL: 2522-8888 FAX: 2522-4343

DESIGN CONSULTANT

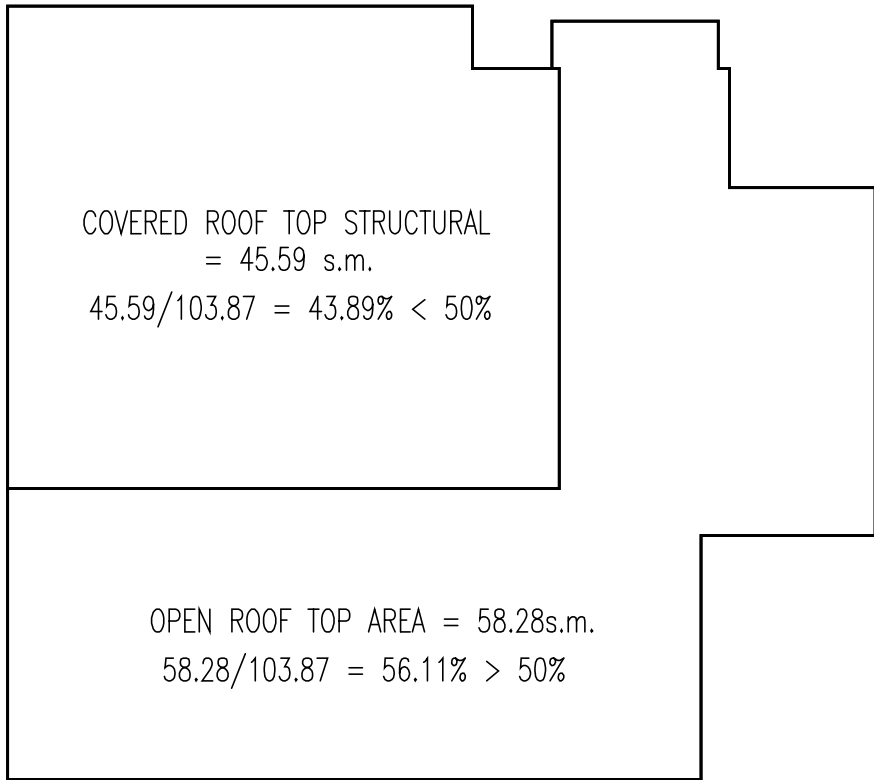
**LEO DESIGN LIMITED**

3/F, HING LUNG COMMERCIAL BUILDING, 68 BONHAY STRAND, HONG KONG

TEL: 2535-8111 EMAIL: leo@leodesign.com.hk

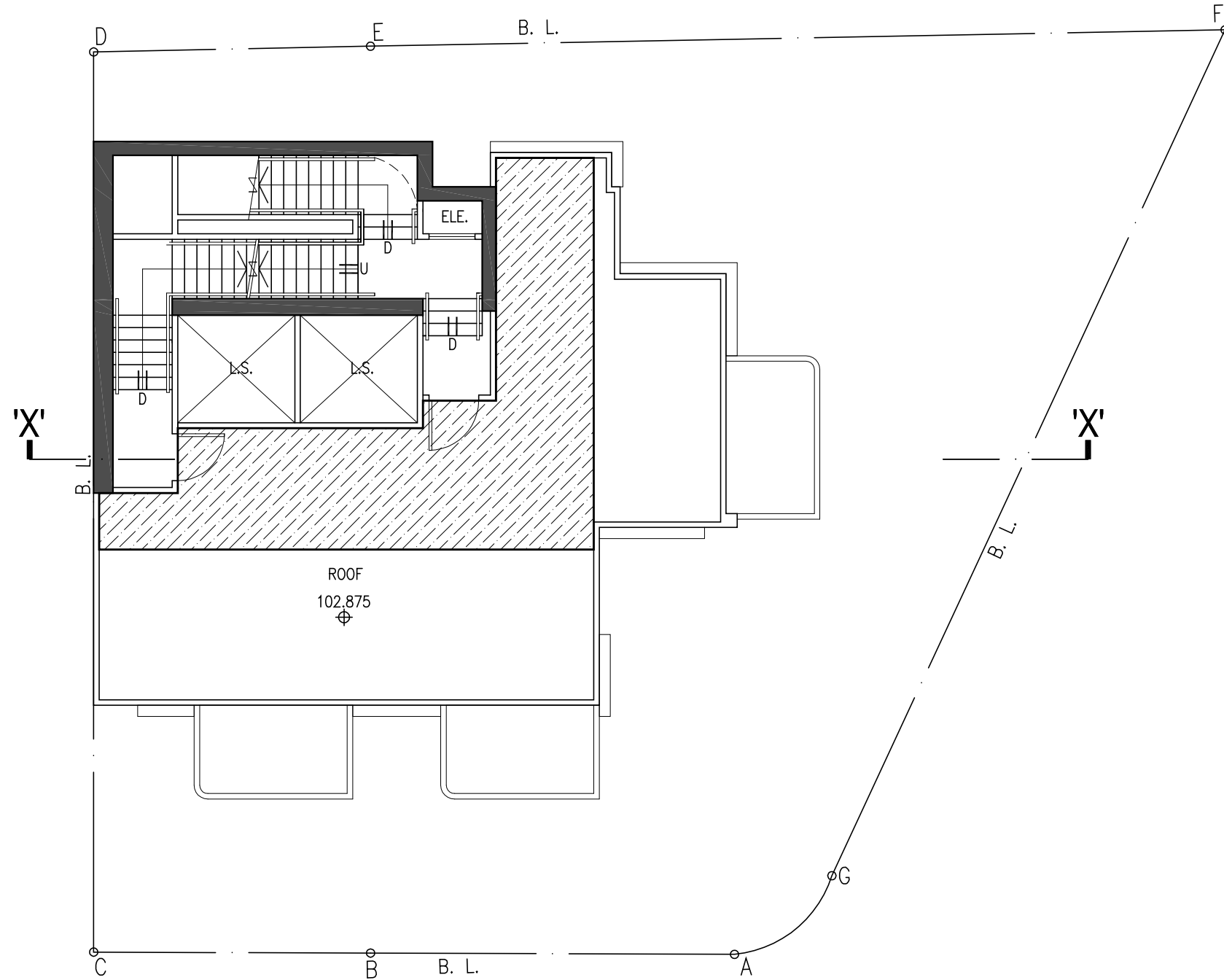
DRAWN CHECKED

DRAWING NO.	DATE	REVISION	BY
FIG-07	A	28/02/2026	
	B	05/03/2026	E
	C	24/03/2026	
	D	10/04/2026	
		05/06/2026	



# ROOF TOP AREA DIAGRAM

ROOF TOP AREA = 103.87s.m.



# ROOF PLAN

B.L.D. REF. NO.  
F.P.B. NO.

---

PROJECT  
**PROPOSED COMPOSITE BUILDING**  
AT Nos. 42-44 YIU WAH STREET,  
CAUSEWAY BAY  
HONG KONG

---

PLAN  
**ROOF PLAN**

---

SCALE

---

AUTHORIZED PERSON  
**T.K. TSUI & ACCOSIATES LIMITED**  
3/F, HING LUNG COMMERCIAL BUILDING, 68 BORNHAM STRAND, HONG KONG  
TEL: 2541-8000 FAX: 2541-8189

---

PLANNER  
**DeSPACE (International) Limited**  
Suite 1601, 16/F, Tower 2, Lipco Centre, 89 Queensway, Admiralty, Hong Kong  
TEL: 3590-6333 FAX: 3590-6233

---

ENVIRONMENTAL CONSULTANT  
**RAMBOLL HONG KONG LIMITED**  
21/F, BEA HARBOUR VIEW CENTRE, 56 GLOUCESTER ROAD, WAI CHAI, HONG KONG  
TEL: 3465-2888 FAX: 3465-2899

---

TRAFFIC CONSULTANT  
**CKM ASIA LIMITED**  
21/F, Methodist House, 36 Hennessy Road, Wan Chai, Hong Kong  
TEL: 2522-8889 FAX: 2522-4343

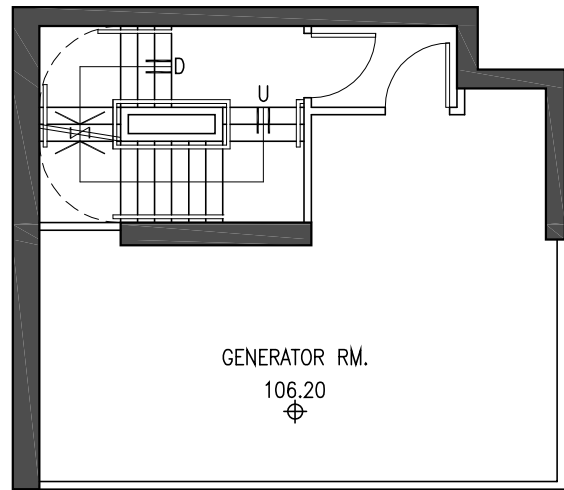
---

DESIGN CONSULTANT  
**LEO DESIGN LIMITED**  
8/F, HING LUNG COMMERCIAL BUILDING, 68 BORNHAM STRAND, HONG KONG  
TEL: 2535-8111 EMAIL: leo@leoedesign.com.hk

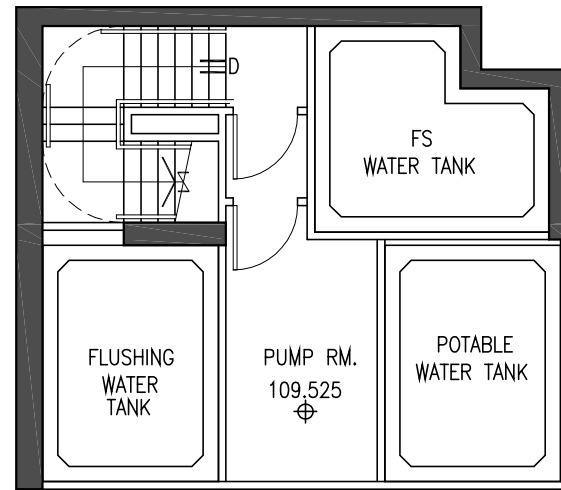
---

DRAWN CHECKED

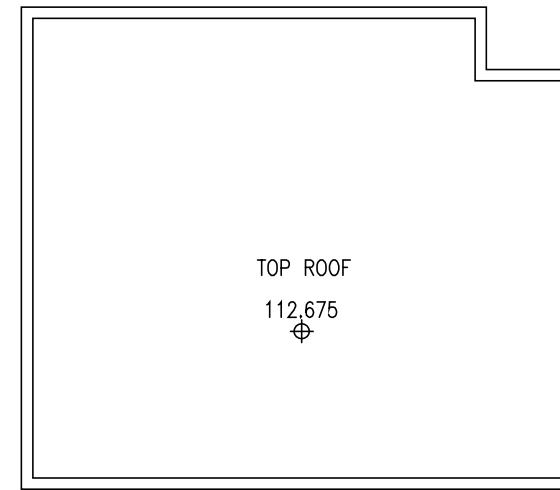
DRAWING NO.	DATE	BY	CHECKED
FIG-08	A	26/02/2026	
	B	05/03/2026	E
	C	24/03/2026	
	D	10/04/2026	
		05/06/2026	



**GENERATOR RM.  
FL. PLAN**



**WATER TANK  
FL. PLAN**



**TOP ROOF PLAN**

B.L.D. REF. NO.

F.P.B. NO.

PROJECT

PROPOSED COMPOSITE BUILDING  
AT Nos. 42-44 YIU WAH STREET,  
CAUSEWAY BAY  
HONG KONG

PLAN

GENERATOR RM.  
WATER TANK  
TOP ROOF

SCALE

AUTHORIZED PERSON

**T.K. TSUI & ACCOSIATES LIMITED**

3/F, HING LUNG COMMERCIAL BUILDING, 68 BORNHAM STRAND, HONG KONG

TEL: 2541-8000 FAX: 2541-8189

PLANNER

**DeSPACE (International) Limited**

Suite 1601, 16/F, Tower 2, Lippo Centre, 89 Queenway, Admiralty, Hong Kong

TEL: 3590-6333 FAX: 3590-6233

ENVIRONMENTAL CONSULTANT

**RAMBOLL HONG KONG LIMITED**

21/F, BEA HARBOUR VIEW CENTRE, 56 GLOUCESTER ROAD, WAN CHAI, HONG KONG

TEL: 3465-2888 FAX: 3465-2899

TRAFFIC CONSULTANT

**CKM ASIA LIMITED**

21/F, Methodist House, 36 Hennessy Road, Wan Chai, Hong Kong

TEL: 2522-8888 FAX: 2522-4343

DESIGN CONSULTANT

**LEO DESIGN LIMITED**

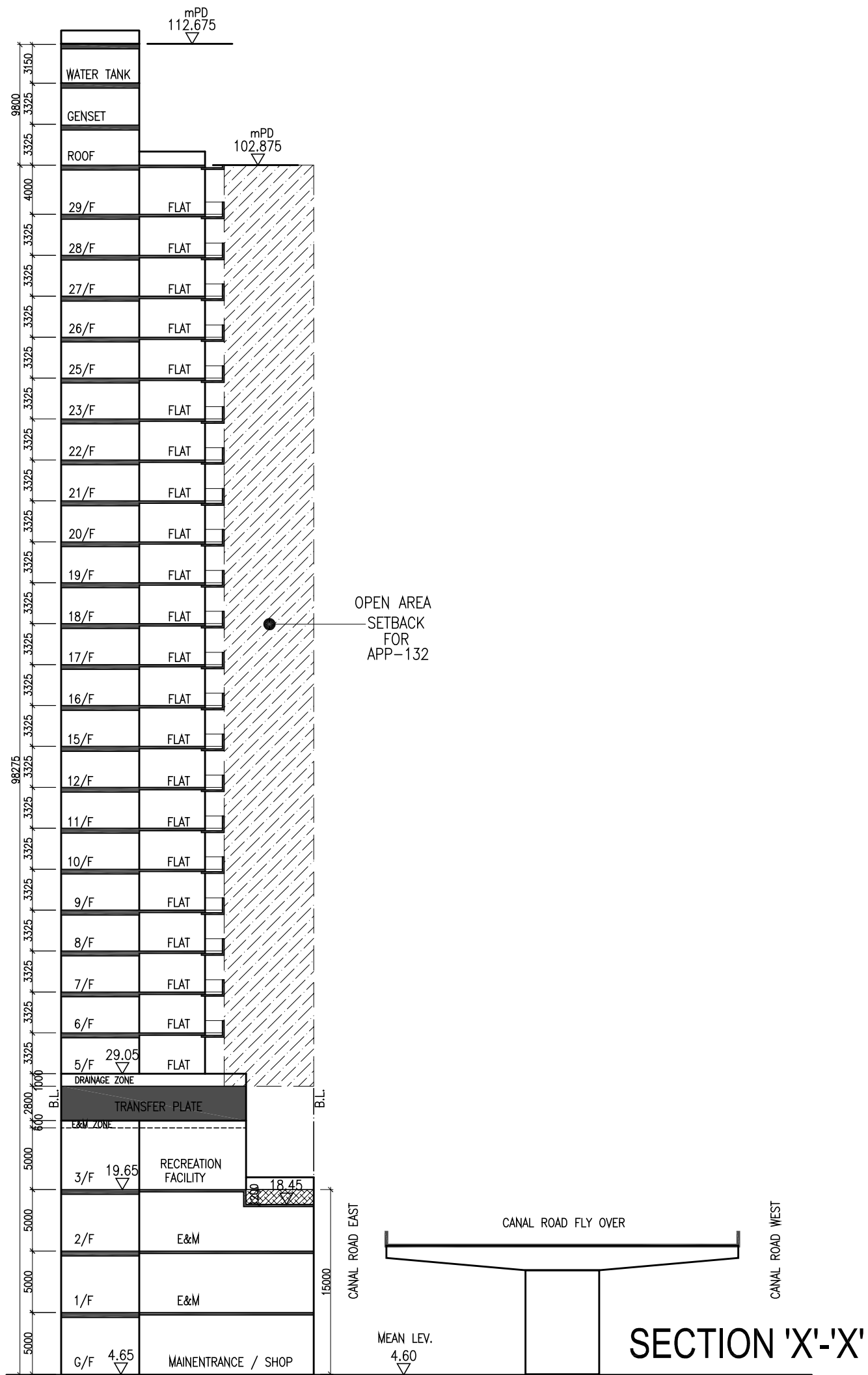
6/F, HING LUNG COMMERCIAL BUILDING, 68 BORNHAM STRAND, HONG KONG

TEL: 2533-8111 E-MAIL: leo@leoedesign.com.hk

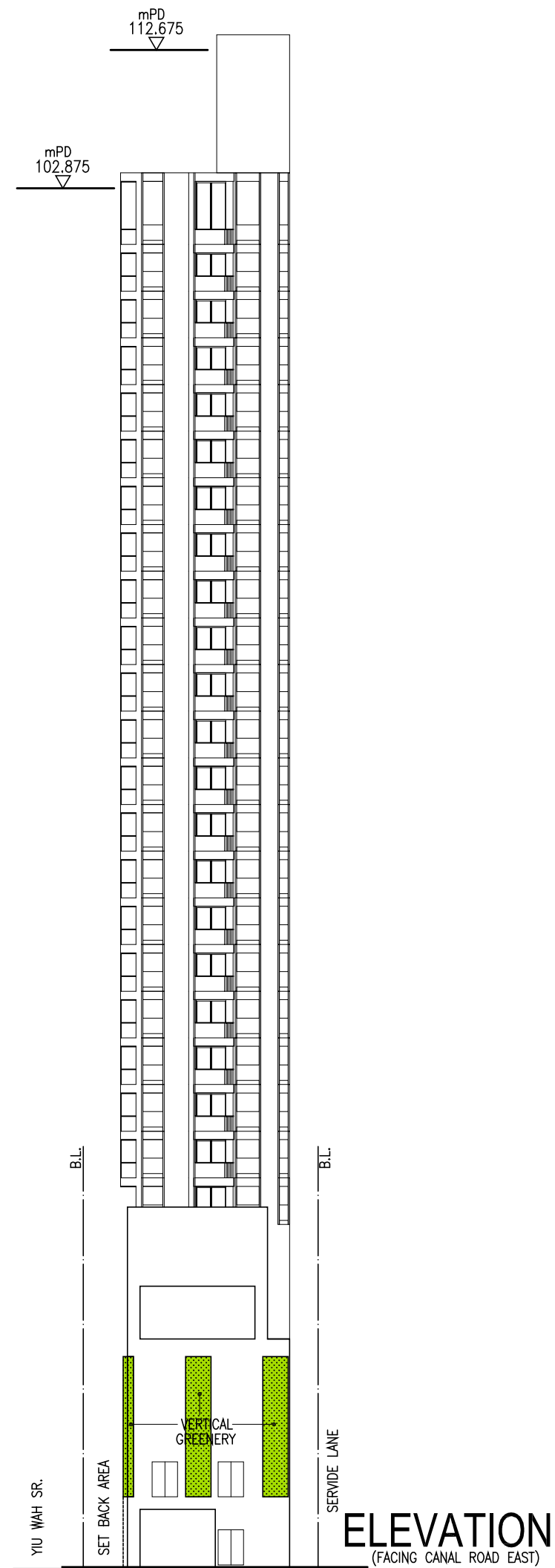
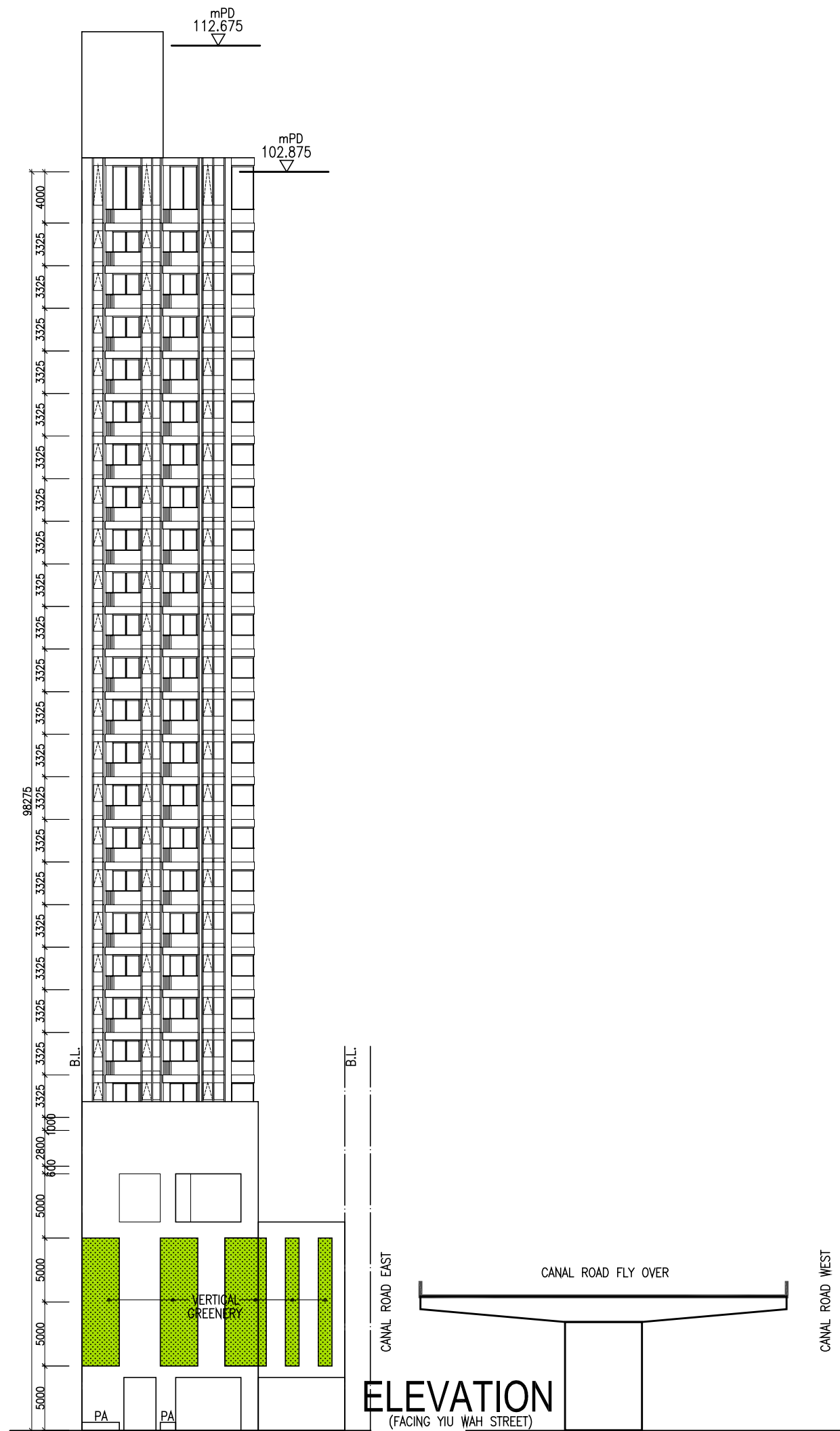
DRAWN

CHECKED

DRAWING NO.	DATE	REVISION	BY
FIG-09	A	26/02/2026	
	B	05/03/2026	E
	C	24/03/2026	
	D	10/04/2026	
		05/06/2026	



B.L.D. REF. NO.			
F.P.B. NO.			
PROJECT			
PROPOSED COMPOSITE BUILDING AT Nos. 42-44 YIU WAH STREET, CAUSEWAY BAY HONG KONG			
PLAN			
SECTION			
SCALE			
AUTHORIZED PERSON			
<b>T.K. TSUI &amp; ACCOSIATES LIMITED</b> 3/F, HING LUNG COMMERCIAL BUILDING, 68 BORNHAM STRAND, HONG KONG TEL: 2541-8000 FAX: 2541-8189			
PLANNER			
<b>DeSPACE (International) Limited</b> Suite 1601, 16/F, Tower 2, Lippo Centre, 89 Queenway, Admiralty, Hong Kong TEL: 3590-6333 FAX: 3590-6233			
ENVIRONMENTAL CONSULTANT			
<b>RAMBOLL HONG KONG LIMITED</b> 21/F, BEA HARBOUR VIEW CENTRE, 56 GLOUCESTER ROAD, WAI CHAI, HONG KONG TEL: 3465-2888 FAX: 3465-2899			
TRAFFIC CONSULTANT			
<b>CKM ASIA LIMITED</b> 21/F, Methodist House, 36 Hennessy Road, Wan Chai, Hong Kong TEL: 2522-8888 FAX: 2522-4343			
DESIGN CONSULTANT			
<b>LEO DESIGN LIMITED</b> 611 HING LUNG COMMERCIAL BUILDING, 68 BORNHAM STRAND, HONG KONG TEL: 2533-8911 EMAIL: leo@leodesign.com.hk			
DRAWN		CHECKED	
DRAWING NO.	DATE	DATE	DATE
FIG-10	-	26/02/2026	
	A	05/03/2026	E
	B	24/03/2026	
	C	10/04/2026	
	D	05/06/2026	



B.L.D. REF. NO.			
F.P.B. NO.			
PROJECT			
PROPOSED COMPOSITE BUILDING AT Nos. 42-44 YIU WAH STREET, CAUSEWAY BAY HONG KONG			
PLAN			
ELEVATION			
SCALE			
AUTHORIZED PERSON			
<b>T.K. TSUI &amp; ASSOCIATES LIMITED</b> 3/F, HING LUNG COMMERCIAL BUILDING, 68 SOHAM STRAND, HONG KONG TEL: 2541-8000 FAX: 2541-8189			
PLANNER			
<b>DeSPACE (International) Limited</b> Suite 1601, 16/F, Tower 2, Lippo Centre, 89 Queensway, Admiralty, Hong Kong TEL: 3590-6333 FAX: 3590-6233			
ENVIRONMENTAL CONSULTANT			
<b>RAMBOLL HONG KONG LIMITED</b> 21/F, BEA HARBOUR VIEW CENTRE, 56 GLOUCESTER ROAD, WAI CHAI, HONG KONG TEL: 3465-2888 FAX: 3465-2899			
TRAFFIC CONSULTANT			
<b>CKM ASIA LIMITED</b> 21/F, Methodist House, 36 Hennessy Road, Wan Chai, Hong Kong TEL: 2522-8989 FAX: 2522-4343			
DESIGN CONSULTANT			
<b>LEO DESIGN LIMITED</b> 6/F, HING LUNG COMMERCIAL BUILDING, 68 SOHAM STRAND, HONG KONG TEL: 2535-8911 EMAIL: leo@leo-design.com.hk			
DRAWN		CHECKED	
DRAWING NO.	DATE	BY	CHKD
FIG-11	A	26/02/2026	
	B	05/03/2026	E
	C	24/03/2026	
	D	10/04/2026	
		05/06/2026	