

Proposed Temporary Open Storage of Construction Machinery and Construction Materials for a Period of 3 Years

at

Lots 43(Part), 192 S.A ss.1 (Part), 192 S.A RP (Part), 192 S.B ss.1 (Part) and 192 S.B RP (Part) in D.D. 128 and Adjoining Government Land, Ha Tsuen, Yuen Long, N.T.

Annex 1 Estimated Traffic Generation

- 1.1 The application site is accessible via a short vehicular access leading from Fung Kong Tsuen Road. Having mentioned that the site is intended for open storage of metal ware, traffic generated by the proposed development is extremely insignificant.
- 1.2 The application site is subject to seven planning permissions all for open storage of metal ware since 2004. The estimated average traffic generation and traffic generation rate at peak hours are as follow:

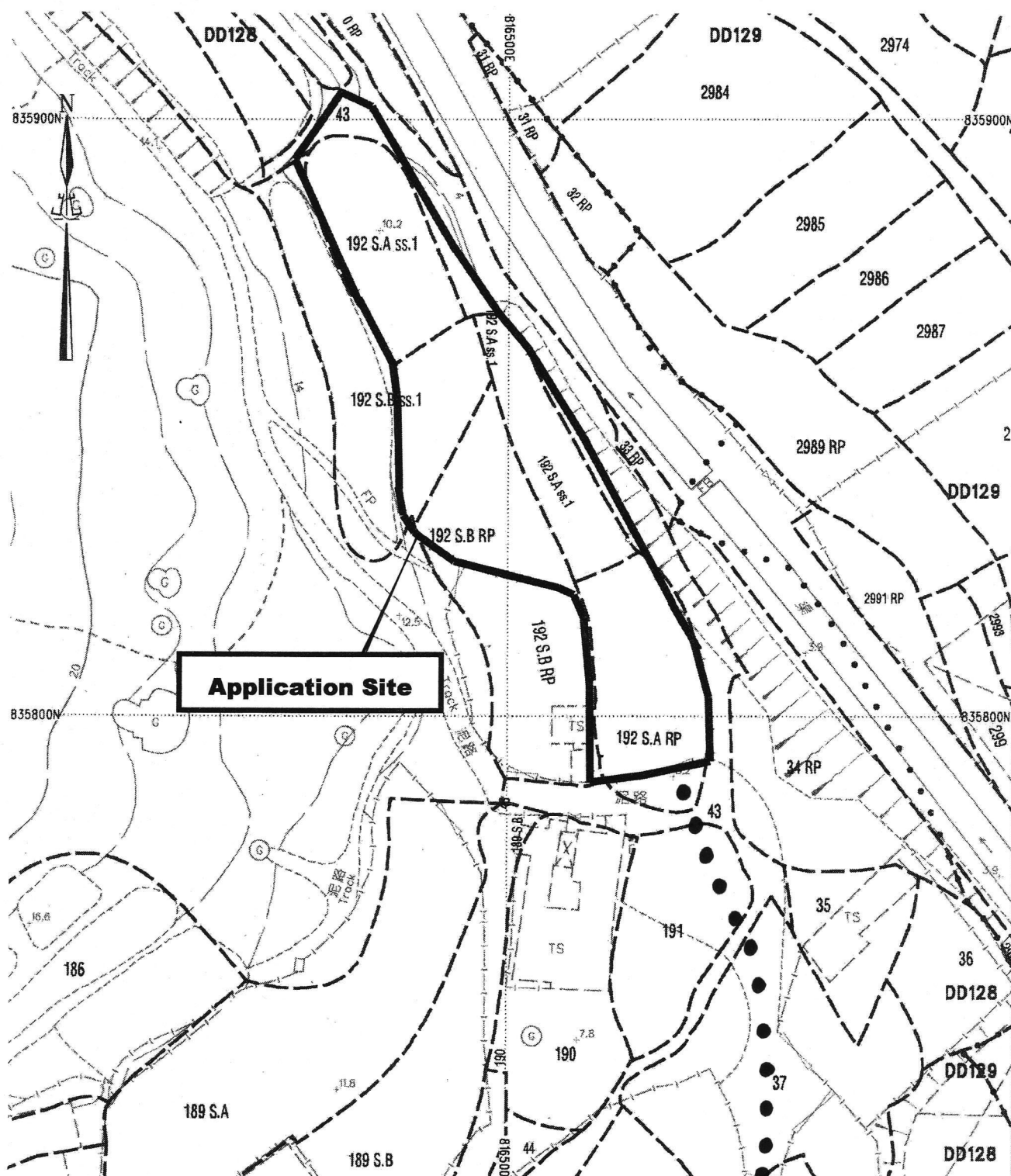
Type of Vehicle	<u>Average Traffic Generation Rate</u> (pcu/hr)	<u>Average Traffic Attraction Rate</u> (pcu/hr)	<u>Traffic Generation Rate at Peak Hours</u> (pcu/hr)	<u>Traffic Attraction Rate at Peak Hours</u> (pcu/hr)
Private Car	0.17	0.17	0	0
Medium goods vehicle	0.5	0.5	2	2
Total	0.67	0.67	2	2

Note 1: The opening hour of the proposed development is restricted to 7:00 a.m. to 7:00 p.m. from Mondays to Saturdays. No operation will be held on Sundays and public holidays.

Note 2: Medium goods vehicle will be used to deliver metal wares to and from the application site. The pcu of the private car and medium goods vehicle is taken as 1 and 2 respectively.

Note 3: Morning peak is defined as 7:00a.m. to 9:00a.m. whereas afternoon peak is defined as 5:00p.m. to 7:00p.m.

- 1.3 In association with the proposed storage purpose, adequate space for manoeuvring and loading/unloading of metal ware would be provided. By virtue of the fact that the application site is directly linked with Yuen Long Highway via Tin Wah Road and Tin Ying Road, the open storage being applied would not aggravate the traffic condition of Tin Ha Road and Ping Ha Road to the south.



Project 項目名稱:

Proposed Temporary Open Storage of Construction Machinery and Construction Materials for a Period of 3 Years at Lots 43(Part), 192 S.A ss.1 (Part), 192 S.A RP (Part), 192 S.B ss.1 (Part) and 192 S.B RP (Part) in D.D. 128 and Adjoining Government Land, Ha Tsuen, Yuen Long, N.T.

Drawing Title 圖目:

Application Site

Drawing No. 圖號:

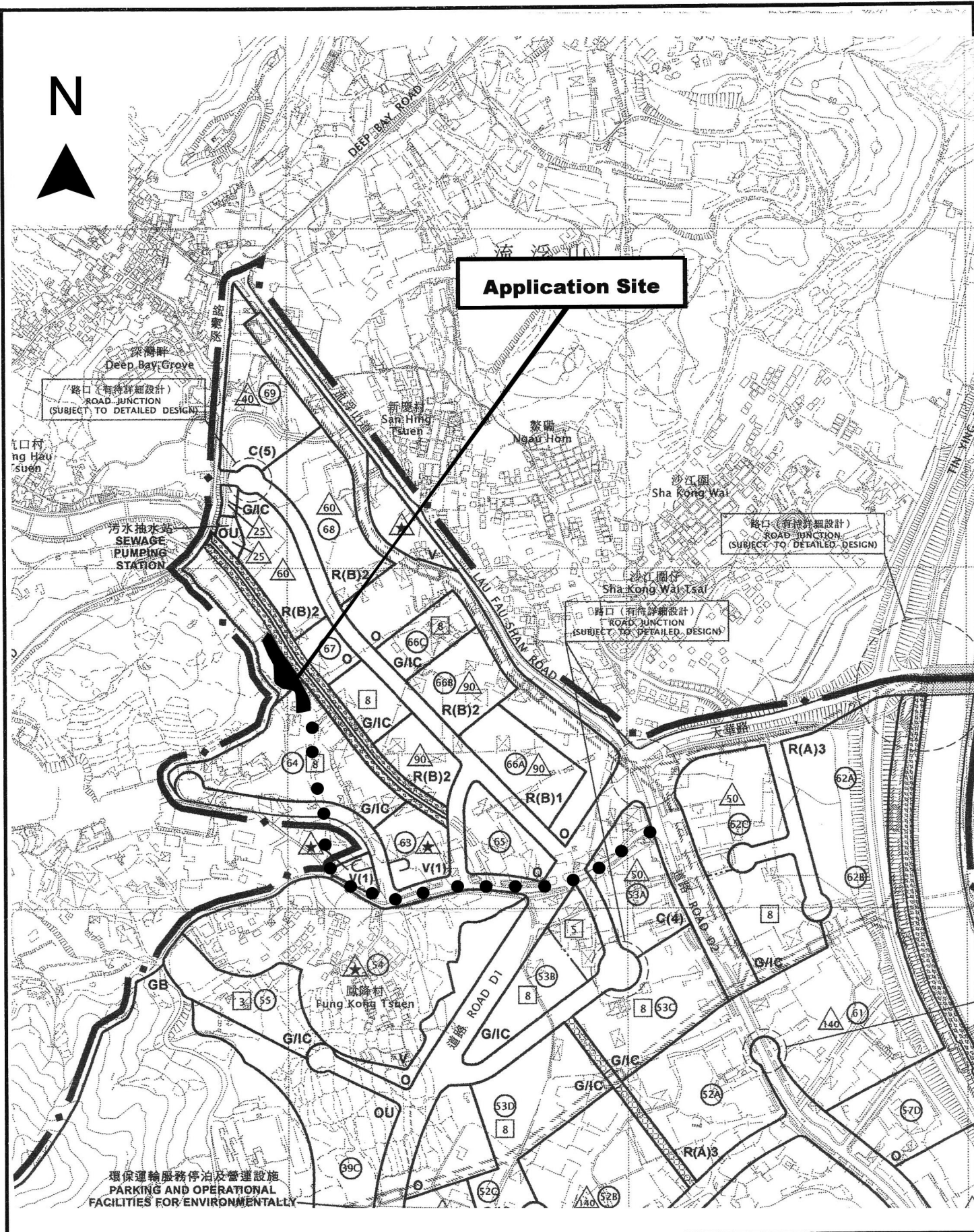
Figure 1

Remarks 備註:

● ● Vehicular Access Leading to Ping Ha Road

Scale 比例:

1:1000



Project 項目名稱:

Proposed Temporary Open Storage of Construction Machinery and Construction Materials for a Period of 3 Years at Lots 43(Part), 192 S.A ss.1 (Part), 192 S.A RP (Part), 192 S.B ss.1 (Part) and 192 S.B RP (Part) in D.D. 128 and Adjoining Government Land, Ha Tsuen, Yuen Long, N.T.

Drawing Title 圖目:

Location Plan

Drawing No. 圖號:

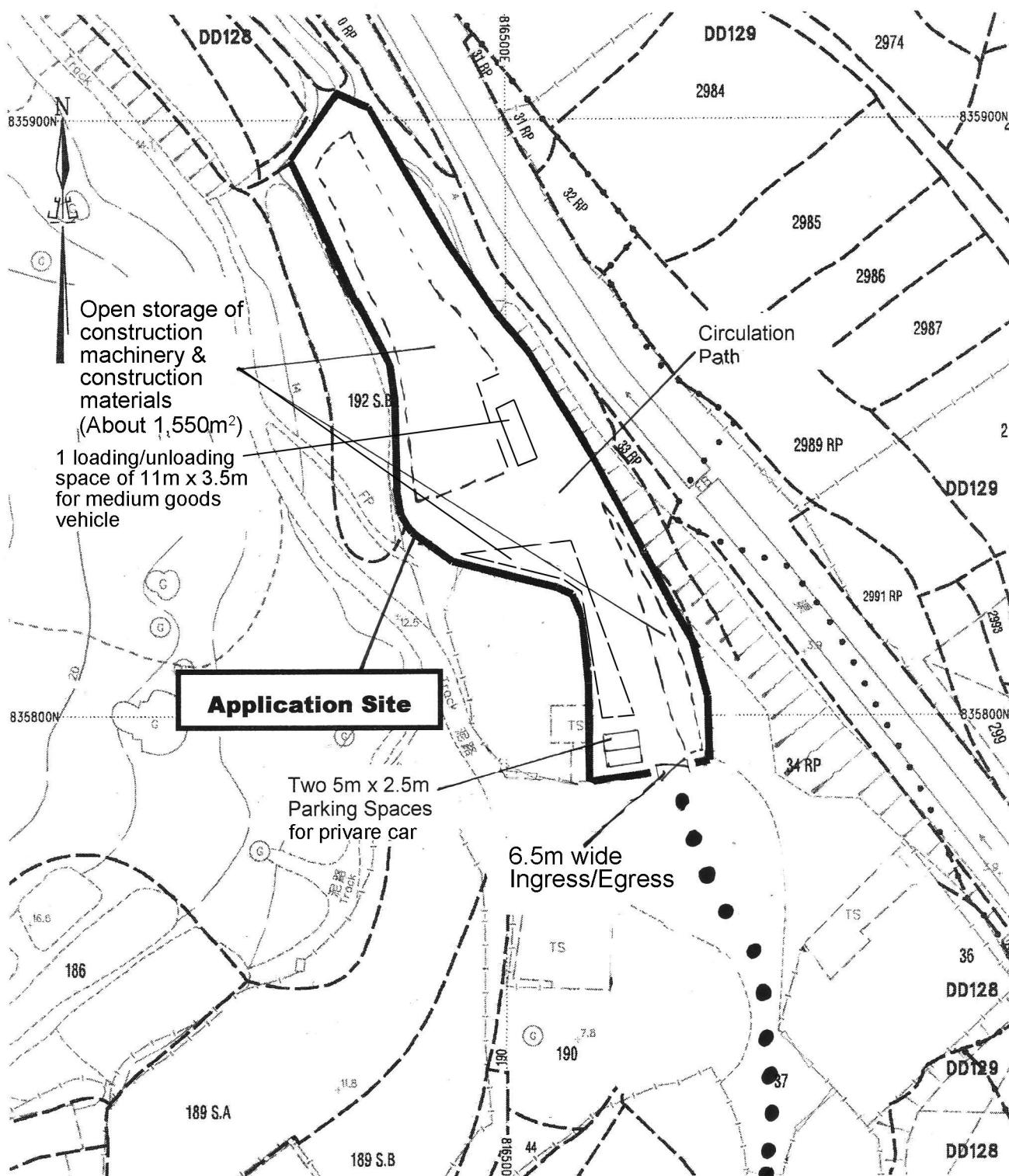
Figure 2

Remarks 備註:

●●● Vehicular Access Leading to Ping Ha Road

Scale 比例:

1:7500



Project 項目名稱:

Proposed Temporary Open Storage of Construction Machinery and Construction Materials for a Period of 3 Years at Lots 43(Part), 192 S.A ss.1 (Part), 192 S.A RP (Part), 192 S.B ss.1 (Part) and 192 S.B RP (Part) in D.D. 128 and Adjoining Government Land, Ha Tsuen, Yuen Long, N.T.

Drawing Title 圖目:

Proposed Layout Plan

Drawing No. 圖號:

Figure 3

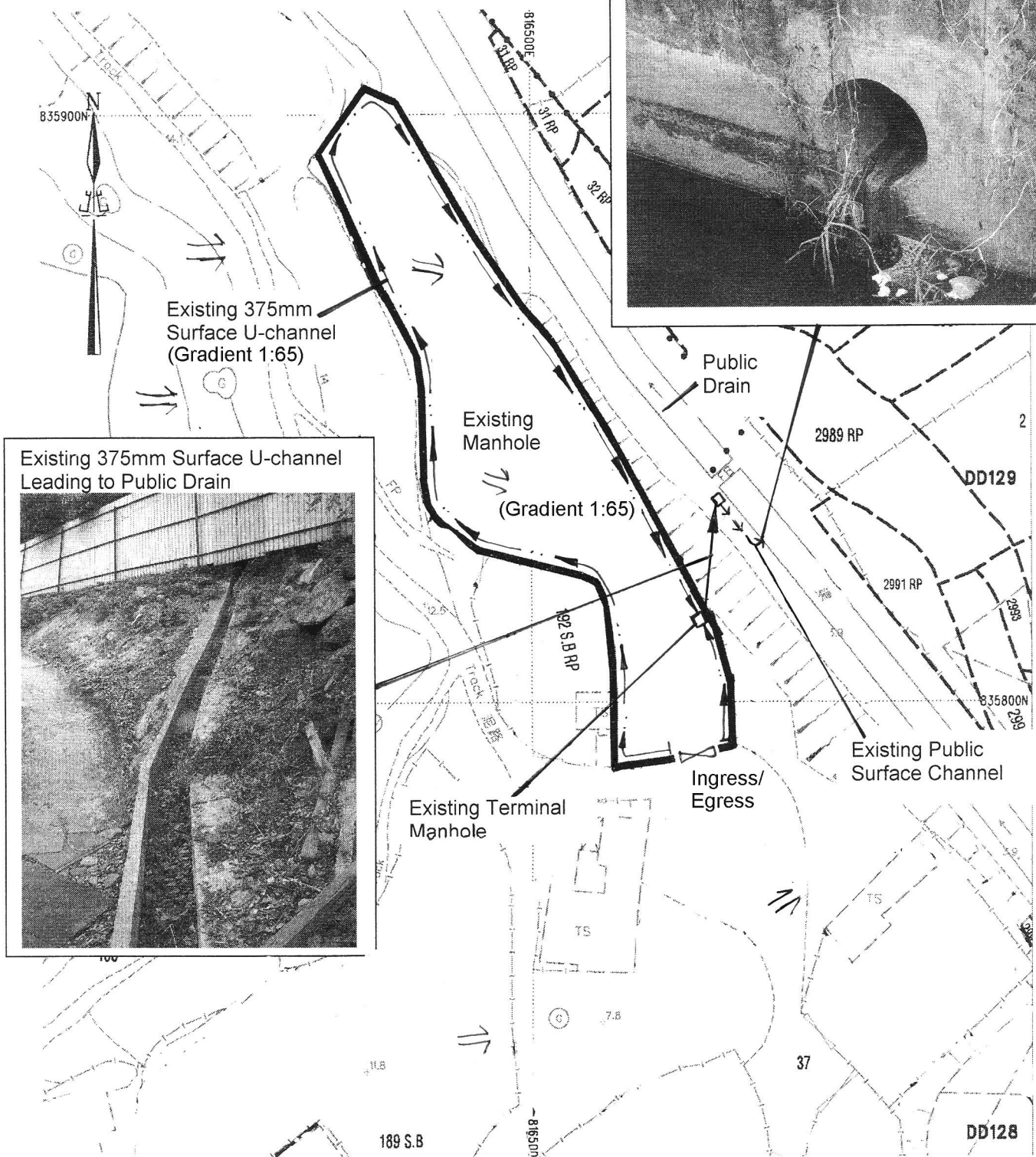
Remarks 備註:

● ● ● Vehicular Access Leading to Ping Ha Road

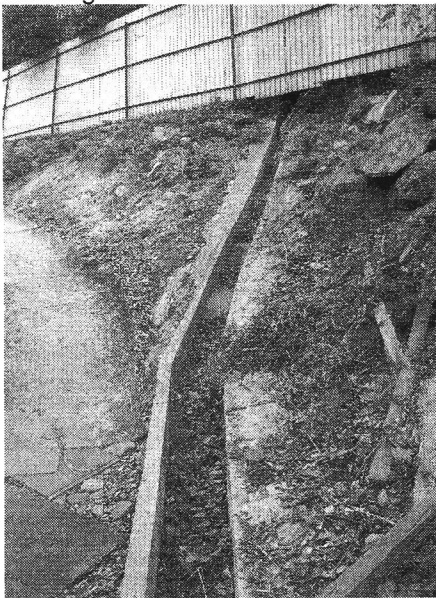
Scale 比例:

1:1000

Discharge Outlet to Public Drain



Existing 375mm Surface U-channel Leading to Public Drain



Project 項目名稱:

Proposed Temporary Open Storage of Construction Machinery and Construction Materials for a Period of 3 Years at Lots 43(Part), 192 S.A ss.1 (Part), 192 S.A RP (Part), 192 S.B ss.1 (Part) and 192 S.B RP (Part) in D.D. 128 and Adjoining Government Land, Ha Tsuen, Yuen Long, N.T.

Drawing Title 圖目:

As-built Drainage Plan

Drawing No. 圖號:

Figure 4

Remarks 備註:

⇒ Flow of Surface Runoff
+7.8 Level (in mPD)

Scale 比例:

1:1000