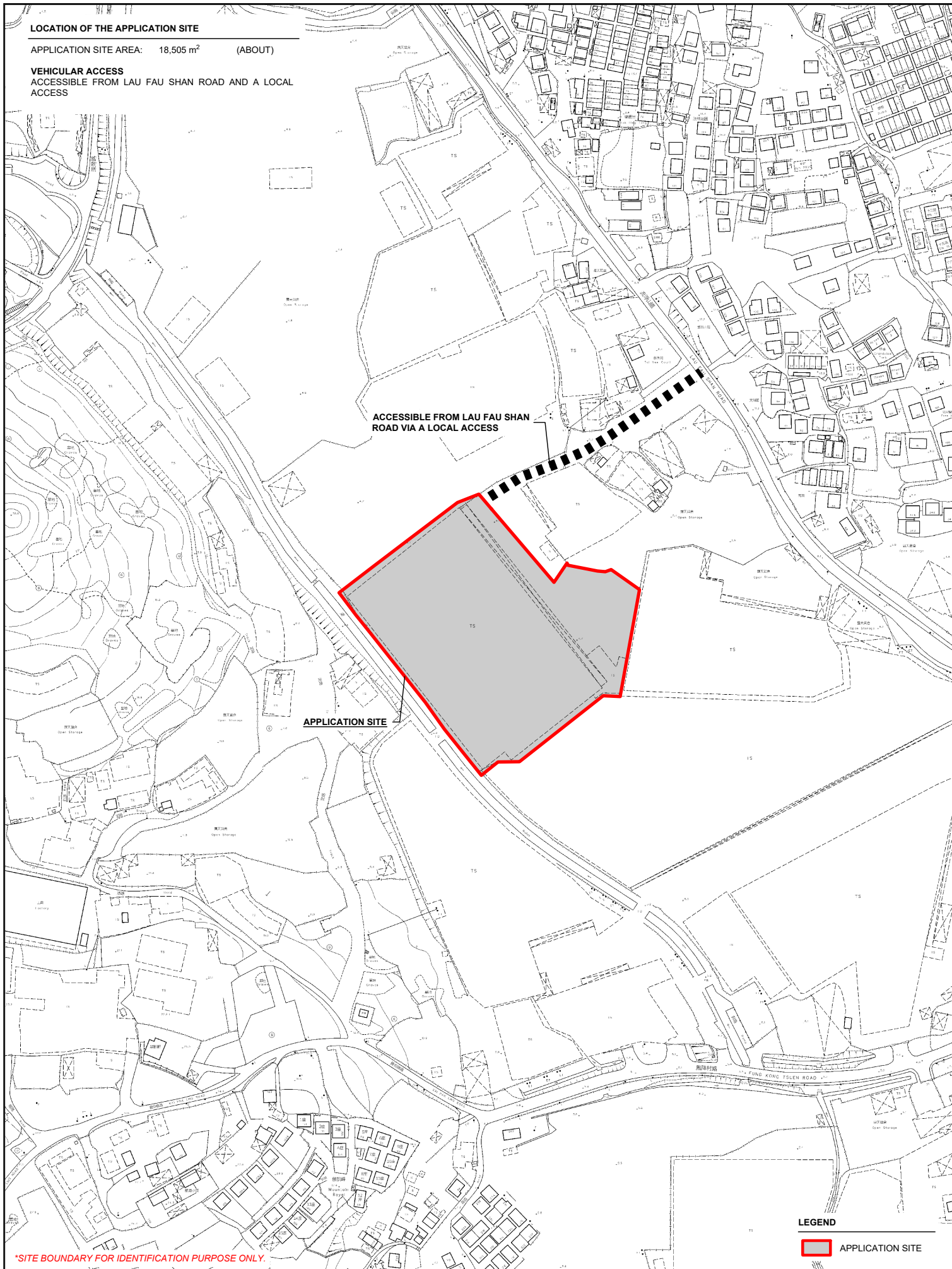


LOCATION OF THE APPLICATION SITE

APPLICATION SITE AREA: 18,505 m² (ABOUT)

VEHICULAR ACCESS

ACCESSIBLE FROM LAU FAU SHAN ROAD AND A LOCAL ACCESS



APPLICATION SITE

ACCESSIBLE FROM LAU FAU SHAN ROAD VIA A LOCAL ACCESS

LEGEND

 APPLICATION SITE

*SITE BOUNDARY FOR IDENTIFICATION PURPOSE ONLY.

PLANNING CONSULTANT



PROJECT

TEMPORARY LOGISTICS CENTRE WITH
ANCILLARY OFFICE AND CANTEN FOR A
PERIOD OF 3 YEARS

ADDRESS

VARIOUS LOTS IN D.D. 129 AND ADJOINING
GOVERNMENT LAND, LAU FAU SHAN, YUEN
LONG, NEW TERRITORIES

SCALE
1 : 3000 @ A4

DRAWN BY

MN

DATE

17.4.2025

REVISED BY

DATE

TITLE

LOCATION PLAN

DWG NO.

PLAN 1

VER.

001



ZONING OF THE APPLICATION SITE

APPLICATION SITE AREA : 18,505 m² (ABOUT)

OUTLINE ZONING PLAN : APPROVED HUNG SHUI KIU AND HA TSUEN OZP

OZP PLAN NO. : S/HSK/2

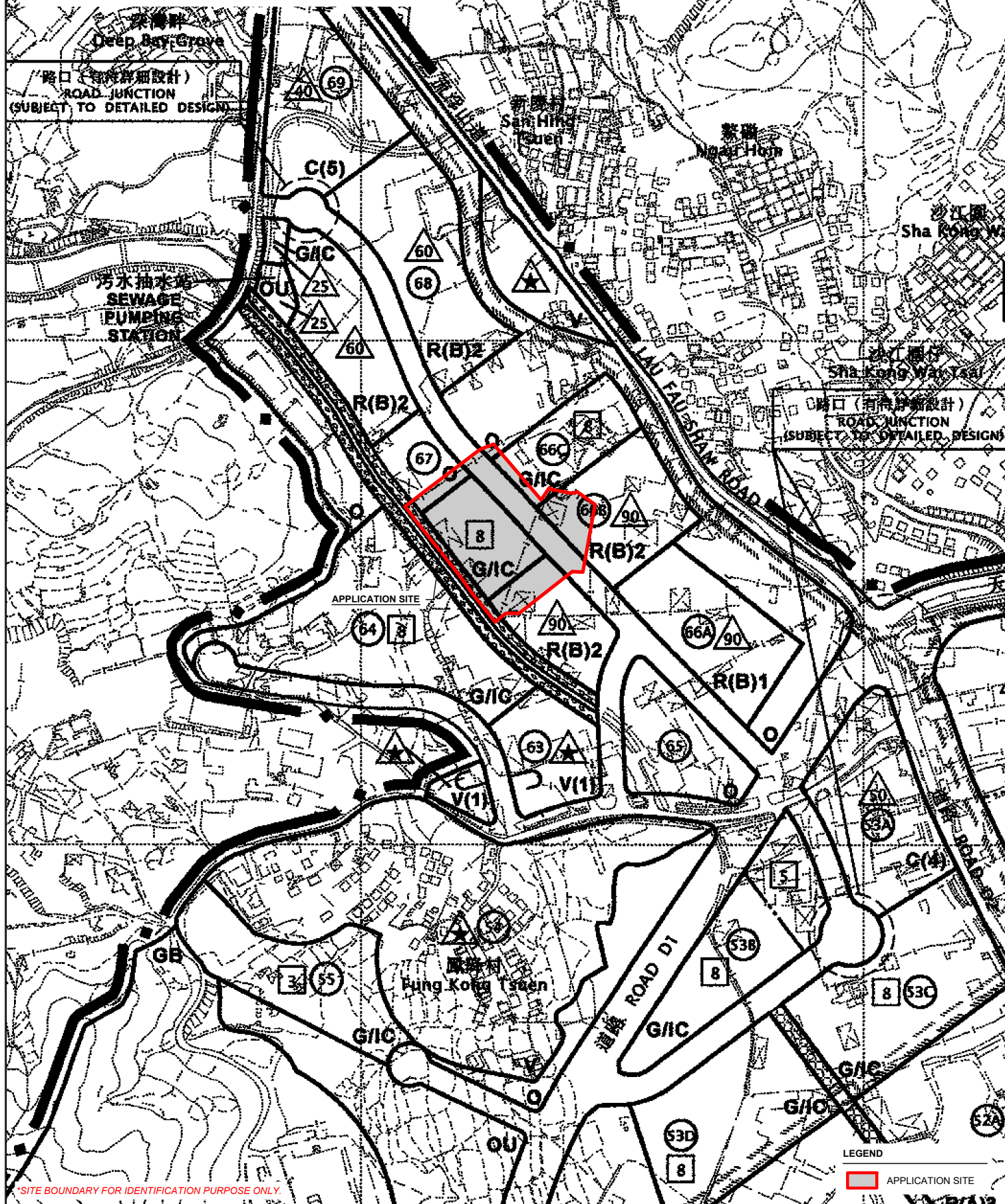
ZONING OF THE SITE : "GOVERNMENT, INSTITUTION OR COMMUNITY" ("GIC")

"RESIDENTIAL (GROUP B)2" ("R(B)2")

"OPEN SPACE" ("O") AND

AREA SHOWN AS "ROAD"

流浮山
LAU FAU SHAN



PLANNING CONSULTANT



PROJECT

TEMPORARY LOGISTICS CENTRE WITH
ANCILLARY OFFICE AND CANTEN FOR A
PERIOD OF 3 YEARS

ADDRESS

VARIOUS LOTS IN D.D. 129 AND ADJOINING
GOVERNMENT LAND, LAU FAU SHAN, YUEN
LONG, NEW TERRITORIES

SCALE

1 : 5000 @ A4

DRAWN BY

MN

DATE

17.4.2025

REVISED BY

DATE

TITLE

ZONING PLAN

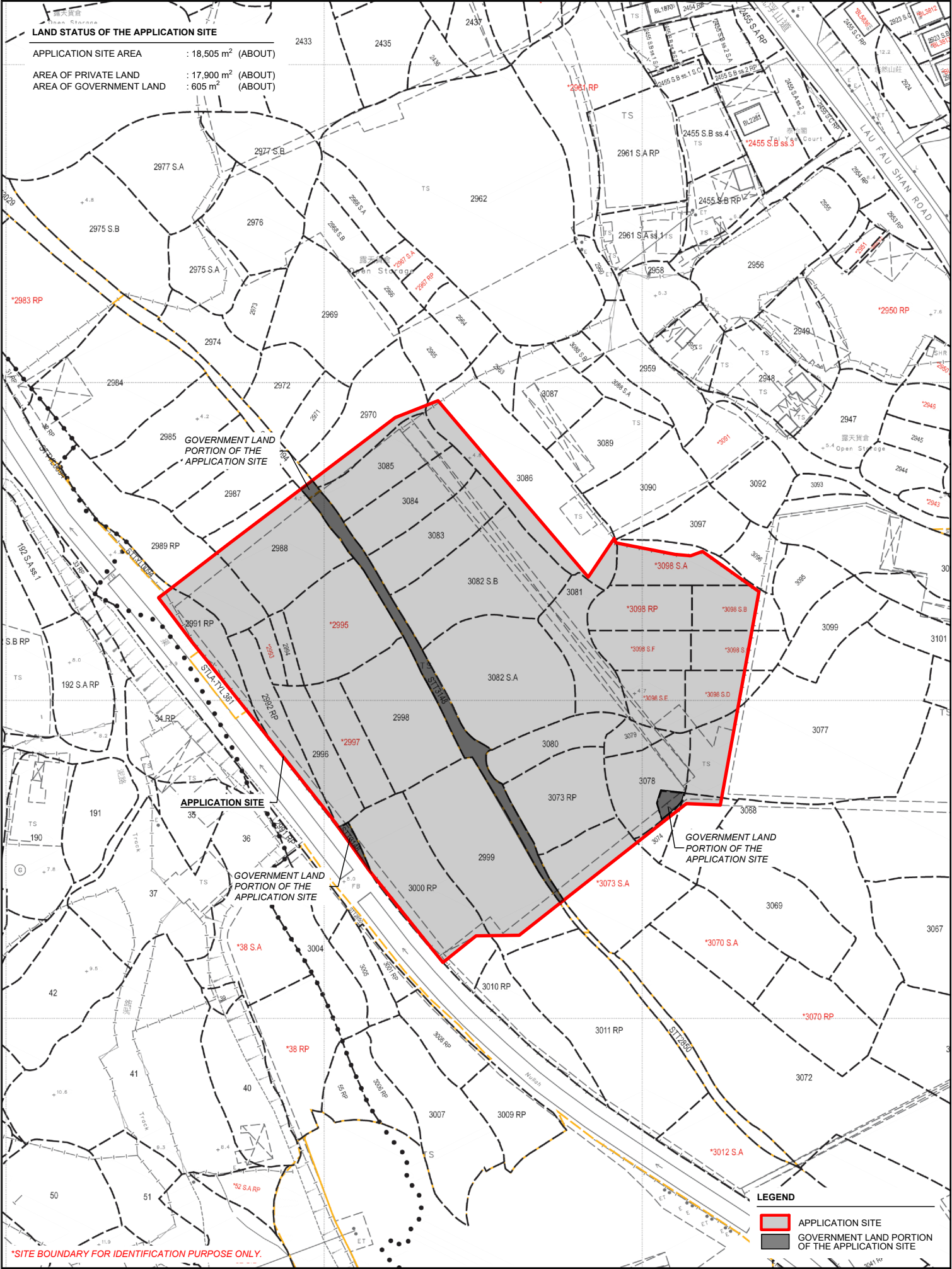
DWG NO.

PLAN 2

VER.

001

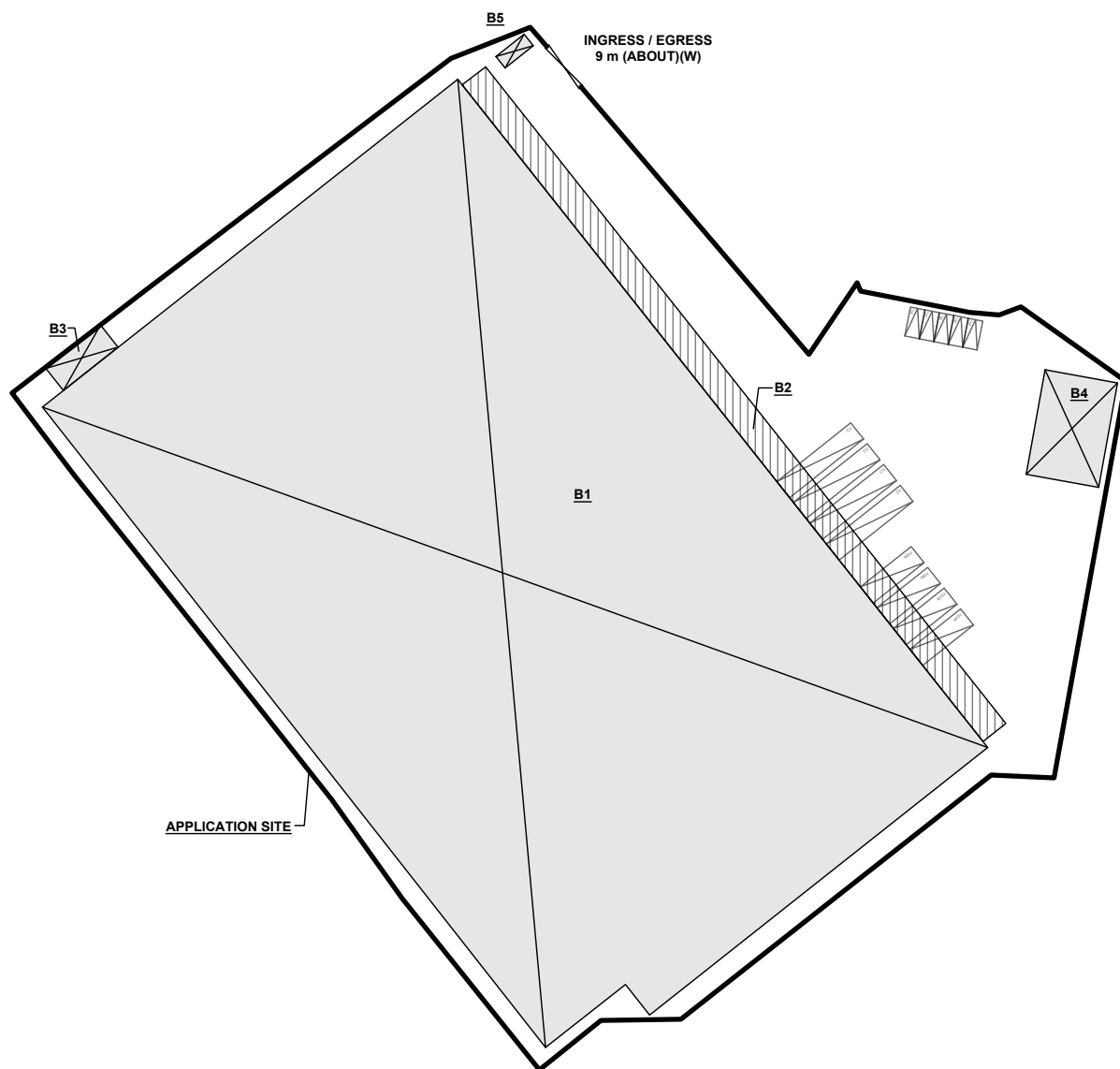




DEVELOPMENT PARAMETERS

APPLICATION SITE AREA	: 18,505 m ²	(ABOUT)
COVERED AREA	: 13,919 m ²	(ABOUT)
UNCOVERED AREA	: 4,586 m ²	(ABOUT)
PLOT RATIO	: 1.5	(ABOUT)
SITE COVERAGE	: 75 %	(ABOUT)
NO. OF STRUCTURE	: 5	
DOMESTIC GFA	: NOT APPLICABLE	
NON-DOMESTIC GFA	: 27,061 m ²	(ABOUT)
TOTAL GFA	: 27,061 m ²	(ABOUT)
BUILDING HEIGHT	: 3 m - 15 m	(ABOUT)
NO. OF STOREY	: 1 - 2	

STRUCTURE	USE	COVERED AREA	GROSS FLOOR AREA	BUILDING HEIGHT
B1	LOGISTICS CENTRE AND STORAGE	12,917 m ² (ABOUT)	25,834 m ² (ABOUT)	15 m (ABOUT)(2-STOREY)
B2	RAIN SHELTER FOR L/UL	706 m ² (ABOUT)	706 m ² (ABOUT)	6.2 m (ABOUT)(1-STOREY)
B3	FS WATER TANK	56 m ² (ABOUT)	56 m ² (ABOUT)	5 m (ABOUT)(1-STOREY)
B4	OFFICE, CANTEEN AND WASHROOM	225 m ² (ABOUT)	450 m ² (ABOUT)	12 m (ABOUT)(2-STOREY)
B5	GUARD ROOM	15 m ² (ABOUT)	15 m ² (ABOUT)	3 m (ABOUT)(1-STOREY)
TOTAL		13,919 m ² (ABOUT)	27,061 m ² (ABOUT)	



PARKING AND LOADING/UNLOADING (L/UL) PROVISIONS

NO. OF PRIVATE CAR PARKING SPACE	: 5
DIMENSION OF PARKING SPACE	: 5 m (L) X 2.5 m (W)
NO. OF L/UL SPACE FOR MEDIUM GOODS VEHICLE	: 4
DIMENSION OF L/UL SPACE	: 11 m (L) X 3.5 m (W)
NO. OF L/UL SPACE FOR CONTAINER VEHICLE	: 4
DIMENSION OF L/UL SPACE	: 16 m (L) X 3.5 m (W)

LEGEND

	APPLICATION SITE
	STRUCTURE (ENCLOSED)
	STRUCTURE (CANOPY)
	PARKING SPACE (PC)
	L/UL SPACE (MGV)
	L/UL SPACE (CV)
	INGRESS / EGRESS

PLANNING CONSULTANT



PROJECT

TEMPORARY LOGISTICS CENTRE WITH ANCILLARY OFFICE AND CANTEEN FOR A PERIOD OF 3 YEARS

ADDRESS

VARIOUS LOTS IN D.D. 129 AND ADJOINING GOVERNMENT LAND, LAU FAU SHAN, YUEN LONG, NEW TERRITORIES

SCALE

1 : 1200 @ A4

DRAWN BY

MN

DATE

16.4.2025

REVISED BY

DATE

TITLE

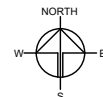
LAYOUT PLAN

DWG NO.

PLAN 4

VER.

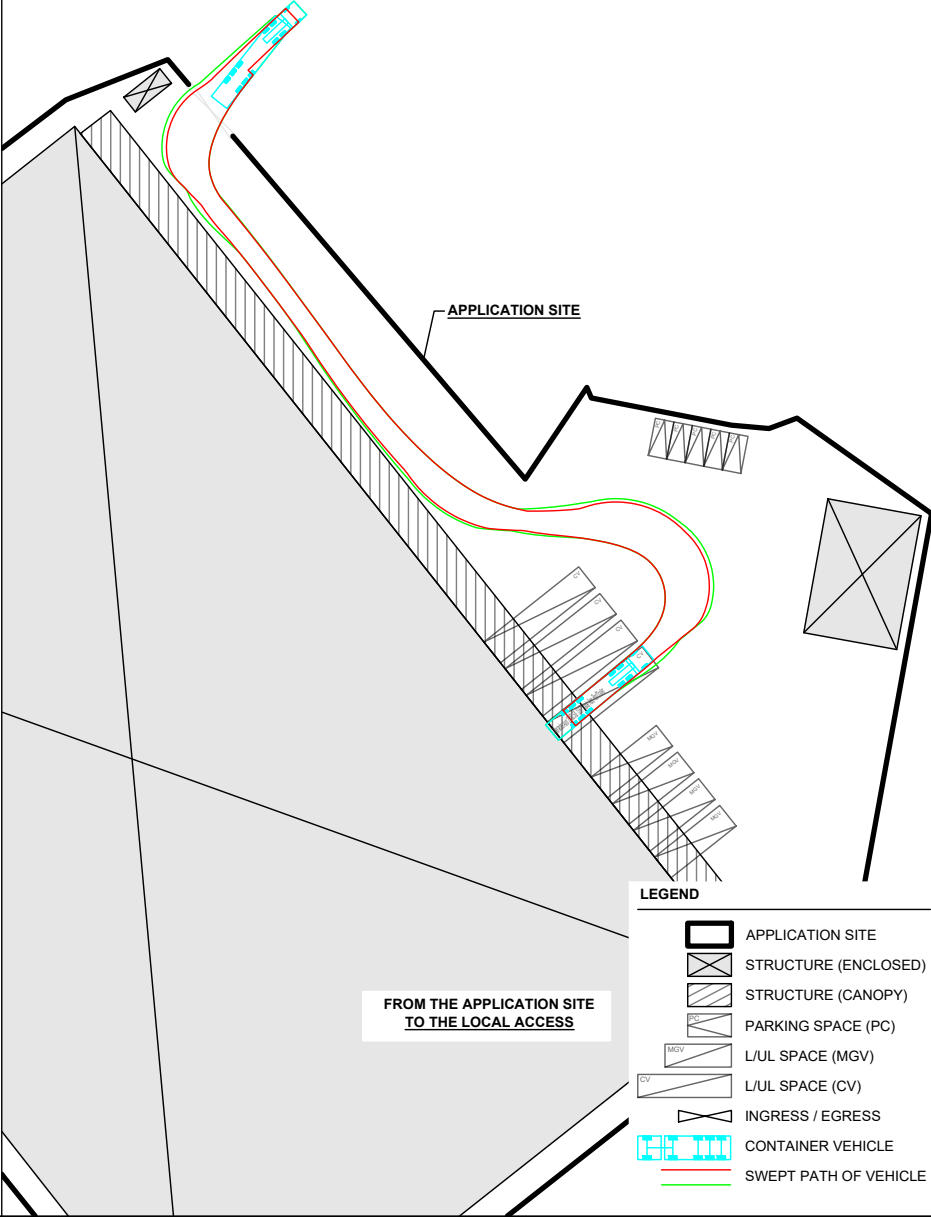
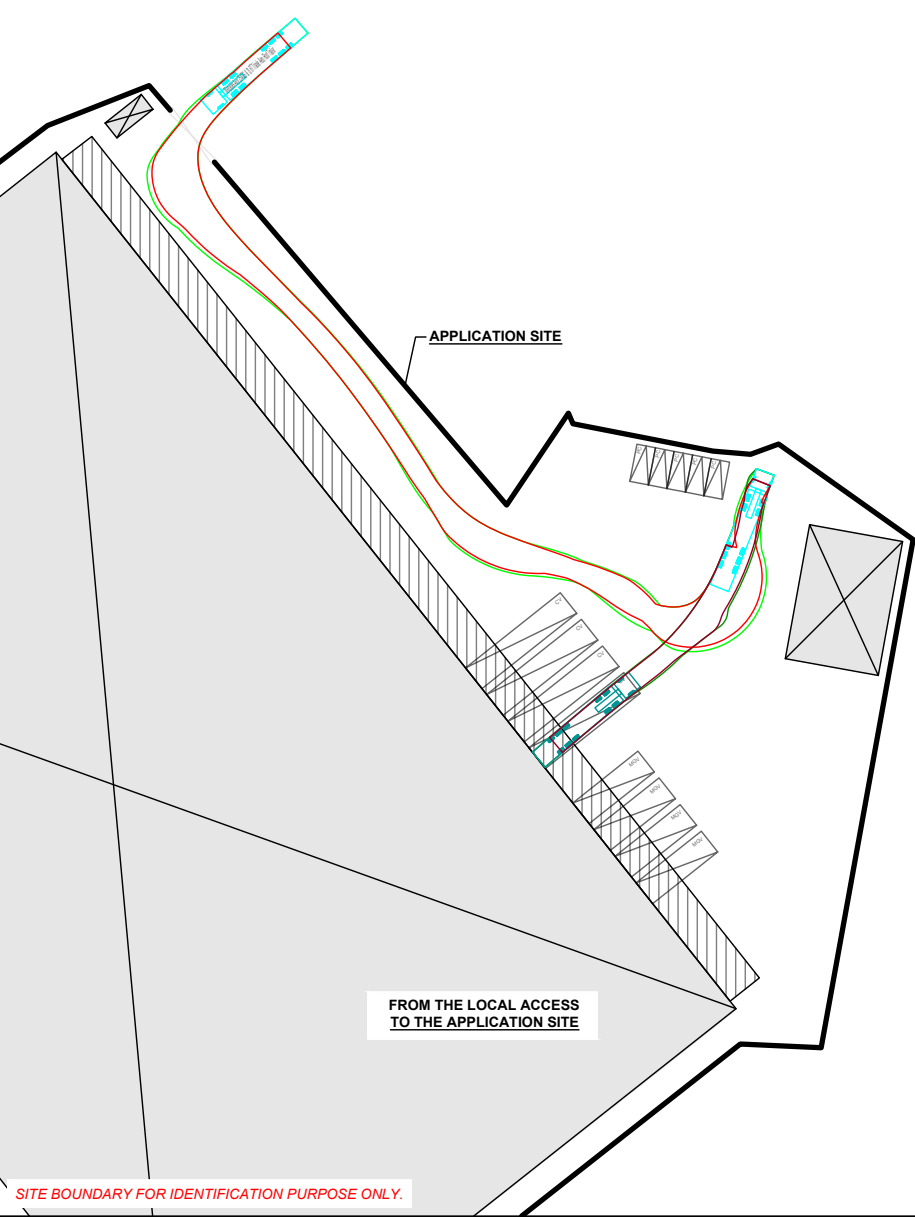
001



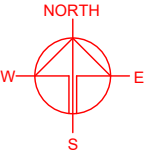
SWEPT PATH ANALYSIS

TYPE OF VEHICLE : CONTAINER VEHICLE
DIMENSION OF VEHICLE : 2.5 m (W) X 16 m (L)
WIDTH OF INGRESS / EGRESS : 9 m (ABOUT)

SWEPT PATHS GENERATED BY AUTODESK VEHICLE TRACKING.



- LEGEND**
- APPLICATION SITE
 - STRUCTURE (ENCLOSED)
 - STRUCTURE (CANOPY)
 - PARKING SPACE (PC)
 - L/UL SPACE (MGV)
 - L/UL SPACE (CV)
 - INGRESS / EGRESS
 - CONTAINER VEHICLE
 - SWEPT PATH OF VEHICLE



PLANNING CONSULTANT	
PROJECT	
TEMPORARY LOGISTICS CENTRE WITH ANCILLARY OFFICE AND CANTEN FOR A PERIOD OF 3 YEARS	
SITE LOCATION	
VARIOUS LOTS IN D.D. 129 AND ADJOINING GOVERNMENT LAND, LAU FAU SHAN, YUEN LONG, NEW TERRITORIES	
SCALE	
1 : 1000 @ A4	
DRAWN BY	DATE
MN	16.4.2025
CHECKED BY	DATE
APPROVED BY	DATE
DWG. TITLE	
SWEPT PATH ANALYSIS (CV)	
DWG NO.	VER.
PLAN 5	001