

Supplementary Statement

1) Background

- 1.1 The applicant seeks permission for renewal of planning approval from the Town Planning Board (the Board) to use *Lots 73 S.A, 73 S.B, 73 S.C, 73 S.D, 73 S.E, 73 S.F, 73 S.G, 73 S.H, 73 S.I, 73 S.J, 74 S.A, 74 S.B, 74 S.C, 74 S.D, 75 S.B and 75 S.C in D.D. 128; Lots 3217 S.A, 3217 S.B, 3217 S.C, 3217 S.D, 3217 S.E, 3217 S.F, 3217 S.G, 3217 S.H, 3217 S.I, 3217 S.J, 3217 S.K, 3217 S.L, 3217 S.M, 3217 S.N, 3217 S.O and 3217 RP in D.D. 129, Fung Kong Tsuen, Yuen Long, New Territories* (the Site) for '**Temporary Public Vehicle Park (Excluding Container Vehicle) for a Period of 5 Years**' (the development) (Plan 1).
- 1.2 The Site is located in close vicinity of some existing residential developments (i.e. Fung Kong Tsuen, Mountain Royal, etc.), which demand for public parking spaces has always been high. There is currently no public transport services provided along Fung Kong Tsuen Road. The nearest public transport (public minibuses and MTR bus services) stop is at Ping Ha Road, which is about 500m away from the Site. Noting the inconveniences, surrounding locals rely mostly on private cars for daily commuting due to the limited destinations of the services and their own travelling destinations to remote villages. On the other hand, the applicant has been receiving enquiries for available parking spaces continuously, which shows the demand for legal parking spaces around the area has always been high.
- 1.3 In view of the above, the applicant would like to continue to operate the applied use to alleviate the pressing demand for legal parking spaces in the area and bring convenience to the surrounding locals.

2) Planning Context

- 2.1 The Site currently falls within an area zoned "Village Type Development" ("V") on the Approved Hung Shui Kiu and Ha Tsuen Outline Zoning Plan (OZP) No.: S/HSK/2 (Plan 2). According to the Notes of the OZP, '*public vehicle park (excluding container vehicle)*' is a column two use within the "V" zone, which requires planning permission from the Board.
- 2.2 The Site is surrounded mostly by warehouses, open storage yards, residential development formed by groups of village houses, formed and vacant land; the development with a few low-rise temporary structures is considered not incompatible with the surroundings.

Furthermore, the development is intended to serve the needs of nearby residents and in support of village developments, hence, it is considered in line with the planning intention of the "V" zone and would better utilise precious land resources in the New Territories.

- 2.3 The Site is the subject of three previous S.16 planning applications of the same 'public vehicle park' use, of which the latest application (No. A/HSK/308) is submitted by the same applicant with the same use as the current application, which was approved by the Board in 2021. Therefore, approval of the current application is in line with the Board's previous decision. Comparing with the latest application (No. A/HSK/308), all development parameters (including but not limited to site area, plot ratio (PR), gross floor area (GFA), building height, etc.) remained the same. The applicant has made effort to comply with approval conditions of the latest application, details are shown at **Table 1** below:

Table 1 - Details of Compliance with Approval Conditions of the Latest Application

Approval Conditions of Application No. A/HSK/308		Date of Compliance
(e)	The submission of a drainage proposal	18.04.2024
(f)	The implementation of the drainage proposal	27.03.2025
(h)	The submission of a fire service installations (FSIs) proposal	06.06.2022
(i)	The implementation of the FSIs proposal	10.03.2023

- 2.4 During the approval period of the latest application, the applicant has made efforts in complying with approval conditions in regard to drainage and fire safety aspects. All time-limited approval conditions are successfully complied with.
- 2.5 In support of the current application, the applicant has submitted a FSIs proposal, the previously accepted drainage proposal and implemented drainage facilities within the Site to minimise potential impact(s) to the surrounding areas, as well as for the consideration of relevant government bureaux/departments and members of the Board (**Appendices I to III**). For information, the same FSIs proposal was also accepted by the Director of Fire Services during the latest application period (A/HSK/308).

3) Development Proposal

- 3.1 The Site occupies an area of 3,037 m² (about) (**Plan 1**). 3 structures are provided at the Site for caretaker office, site office and covered parking spaces with total gross floor area (GFA) of 163 m² (about) (**Plan 4**). The caretaker office and site office are intended for staff to support the daily operation of the Site. It is estimated that the site would accommodate 4 nos. of staff. Details of development parameters are shown at **Table 2** below:

Table 2 - Major Development Parameters

Application Site Area	3,037 m ² (about)
Covered Area	136 m ² (about)
Uncovered Area	2,901 m ² (about)
Plot Ratio	
	0.05 (about)
Site Coverage	
	4 % (about)
Number of Structure(s)	
	3
Total GFA	
- Domestic GFA	Not applicable
- Non-Domestic GFA	163 m ² (about)
Building Height	
	3.5 m - 6.5 m (about)
No. of Storey	
	1 - 2

- 3.2 The Site is accessible from Fung Kong Tsuen Road via a local access (**Plan 1**). The operation hours of the public vehicle park are 24 hours daily, including public holidays. A total of 52 parking spaces will be provided at the Site, details of parking provisions are shown at **Table 3** below:

Table 3 - Parking Provisions

Type of Space	No. of Space
Private Car (PC) Parking Space - 2.5 m (W) x 5 m (L)	40
Light Goods Vehicles (LGV) Parking Space - 3.5 m (W) x 7 m (L)	12

- 3.3 Only PCs and LGVs are allowed to enter/exit the Site at any time during the planning approval period. Other vehicles, including medium and heavy goods vehicles, container tractors/trailers, etc., are not allowed to enter/exit the Site. The applicant will ensure no

queuing and/or waiting for motor vehicles from the Site onto Fung Kong Tsuen Road via the local access, and no motor vehicles will be permitted to reverse into and out of the Site onto Fung Kong Tsuen Road via the local access.

- 3.4 Furthermore, no vehicles without valid licenses issued under the *Road Traffic (Registration and Licensing of Vehicle) Regulations* are allowed to be parked/stored at the Site at any time during the planning approval period. The trip generation and attraction rates are as shown at **Table 4** below, adverse traffic impact to the surrounding road network should not be anticipated.

Table 4 - Estimated Trip Generation and Attraction

Time Period	Trip Generation and Attraction				2-Way Total
	PC		LGV		
	In	Out	In	Out	
Trips at <u>AM peak</u> per hour (08:00 - 09:00)	1	4	0	2	7
Trips at <u>PM peak</u> per hour (18:00 - 19:00)	3	2	2	0	7
Traffic trip per hour (average)	2	2	1	1	6

- 3.5 The applicant will strictly follow the 'Code of Practice on Handling the Environmental Aspects of Temporary Uses and Open Storage Sites' issued by Environmental Protection Department and statutory requirements under relevant pollution control ordinances to minimise adverse environmental impacts and nuisance to the surrounding area. The applicant will strictly comply with all environmental protection / pollution control ordinances, i.e. *Water Pollution Control Ordinance, Air Pollution Control Ordinance, Noise Control Ordinance* etc. at all times during the planning approval period.

4) Conclusion

- 4.1 The development will not create significant nuisance to the surrounding areas. Adequate mitigation measures have been provided by the applicant, i.e. submission of an updated FSIs proposal, the previously approved drainage proposal and implemented drainage facilities to mitigate any adverse impact arising from the development (**Appendices I to III**).

- 4.2 In view of the above, the Board is hereby respectfully recommended to approve the subject application for '**Temporary Public Vehicle Park (Excluding Container Vehicle) for a Period of 5 Years**'.

R-riches Planning Limited

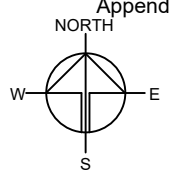
February 2026

LIST OF PLANS

Plan 1	Location Plan
Plan 2	Zoning Plan
Plan 3	Land Status Plan
Plan 4	Layout Plan
Plan 5	Swept Path Analysis

APPENDICES

Appendix I	Fire Service Installations Proposal
Appendix II	Approved Drainage Proposal under the Latest Application No. A/HSK/308
Appendix III	Approved Implemented Drainage Facilities under the Latest Application No. A/HSK/308



DEVELOPMENT PARAMETERS

APPLICATION SITE AREA : 3,037m² (ABOUT)
 COVERED AREA : 136m² (ABOUT)
 UNCOVERED AREA : 2,901m² (ABOUT)

PLOT RATIO : 0.05 (ABOUT)
 SITE COVERAGE : 4% (ABOUT)

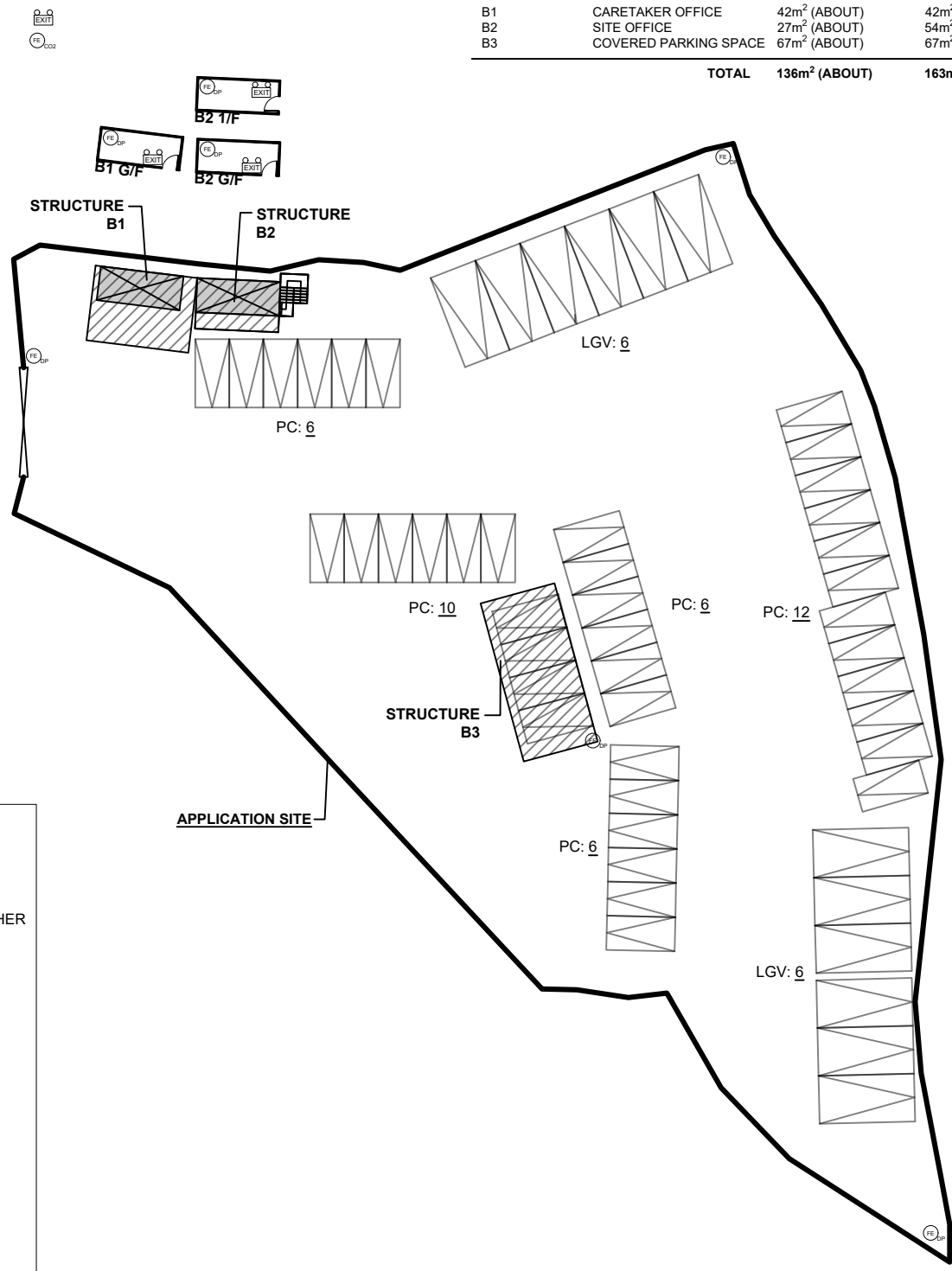
NO. OF STRUCTURE : 3
 DOMESTIC GFA : N/A
 NON-DOMESTIC GFA : 163m² (ABOUT)
 BUILDING HEIGHT : 3.5m - 6.5m (ABOUT)
 NO. OF STOREY : 1 - 2

PARKING PROVISIONS

NO. OF PRIVATE CAR PARKING SPACE : 40
 DIMENSION OF PARKING SPACE : 2.5m (W) X 5m (L)

NO. OF LGV PARKING SPACE : 12
 DIMENSION OF L/UL SPACE : 3.5m (W) X 7m (L)

STRUCTURE	USE	COVERED AREA	GFA	BUILDING HEIGHT
B1	CARETAKER OFFICE	42m ² (ABOUT)	42m ² (ABOUT)	3.5m (ABOUT)(1-STOREY)
B2	SITE OFFICE	27m ² (ABOUT)	54m ² (ABOUT)	6.5m (ABOUT)(2-STOREY)
B3	COVERED PARKING SPACE	67m ² (ABOUT)	67m ² (ABOUT)	3.5m (ABOUT)(1-STOREY)
TOTAL		136m² (ABOUT)	163m² (ABOUT)	



FIRE SERVICE INSTALLATIONS

- 3 x EXIT SIGN AND EMERGENCY LIGHT
- 7 X 4 KG DRY POWER TYPE FIRE EXTINGUISHER

FS NOTES:

1. SUFFICIENT EMERGENCY LIGHTING SHALL BE PROVIDED THROUGHOUT THE ENTIRE BUILDING IN ACCORDANCE WITH BS5266: PART1 AND BS EN1838
2. SUFFICIENT DIRECTIONAL AND EXIT SIGN SHALL BE PROVIDED IN ACCORDANCE WITH BS5266: PART 1 AND FSD CIRCULAR LETTER 5/2008.
3. PORTABLE HAND-OPERATED APPROVED APPLIANCE SHALL BE PROVIDED AS REQUIRED BY OCCUPANCY.
4. ACCESS IS PROVIDED FOR EMERGENCY VEHICLE TO REACH 30m OF ALL PART OF STRUCTURES.

LEGEND

- APPLICATION SITE
- STRUCTURE (ENCLOSED)
- STRUCTURE (CANOPY)
- PARKING SPACE
- INGRESS / EGRESS

Drawing No. APPENDIX I	Ver. 01
Project PROPOSED TEMPORARY PUBLIC VEHICLE PARK (EXCLUDING CONTAINER VEHICLE) FOR A PERIOD OF 5 YEARS	
VARIOUS LOTS IN D.D. 128 AND D.D. 129	
Drawing Title FSIs PROPOSAL	
Scale of A4 1 : 500	
Drawn OL	Date 31.05.2022
Revised	Date

規 劃 署

屯門及元朗西規劃處
香港新界沙田上禾輦路 1 號
沙田政府合署 14 樓



By Fax ([REDACTED]) and Post

Planning Department

Tuen Mun and Yuen Long West
District Planning Office
14/F, Sha Tin Government Offices,
1 Sheung Wo Che Road, Sha Tin,
N.T. Hong Kong

18 April 2024

來函檔號 Your Reference
本署檔號 Our Reference () in TPB/A/HSK/308
電話號碼 Tel. No. : 2158 6295
傳真機號碼 Fax No. : 2489 9711

R-riches Property Consultants Ltd.
[REDACTED]

Dear Sir/Madam,

Compliance with Approval Condition (e) Planning Application No. A/HSK/308

I refer to your submission dated 15.3.2024 regarding the submission of a drainage proposal for compliance with captioned approval condition. The relevant department has been consulted on your submission. Your submission is considered:

- Acceptable. The captioned condition has been complied with.
- Acceptable. Since the captioned condition requires both the submission and implementation of the proposal, it has not been fully complied with. Please proceed to implement the accepted proposal for full compliance with the approval condition.
- Not acceptable. The captioned condition has not been complied with.

Should you have any queries, please contact Ms. Vicky SY (Tel: [REDACTED]) of the Drainage Services Department direct.

Yours faithfully,

(Ms. Sherry KONG)
for District Planning Officer/
Tuen Mun and Yuen Long West
Planning Department



c.c

CE/MN, DSD

(Attn: Ms. Vicky SY)

Internal

CTP/TPB2

Our Ref.: DD128 Lot 73 S.A & VL
Your Ref.: TPB/A/HSK/308

The Secretary
Town Planning Board
15/F, North Point Government office
333 Java Road
North Point, Hong Kong

By Email

15 March 2024

Dear Sir,

Compliance with Approval Condition (e)

**Proposed Temporary Public Vehicle Park (excluding Container Vehicle) for a Period of 5 Years
in “Village Type Development” Zones, Various Lots in D.D. 128 and D.D. 129,
Lau Fau San, Yuen Long, New Territories**

(S.16 Planning Application No. A/HSK/308)

We are writing to submit an RtoC table and a revised drainage proposal for compliance with approval condition (e) of the subject application, i.e. the submission of drainage proposal (**Appendix I and II**). Your kind attention to the matter is much appreciated.

Should you require more information regarding the application, please contact our Mr. Ron LEUNG / [REDACTED] or the undersigned at your convenience.

Yours faithfully,

For and on behalf of
R-riches Property Consultants Limited

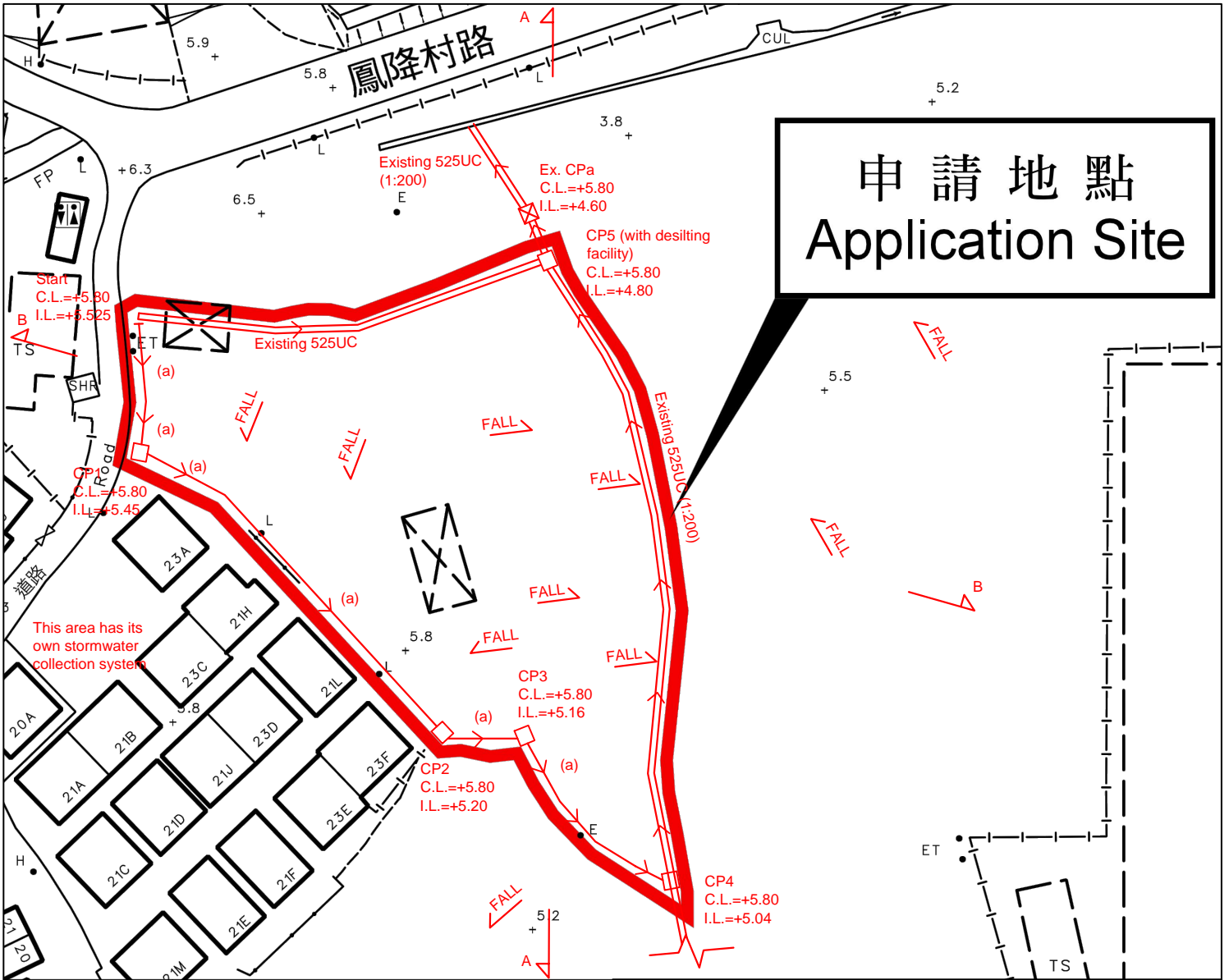



Oroheus LEE
Planning and Development Consultant



Appendix I – Response-to-Comment Table

Departmental Comments		Applicant's Responses
1. Comments of Chief Engineer/Mainland North, Drainage Services Department (CE/MN, DSD) (Contact Person: Ms. Vicky SY; Tel: ██████████)		
(i)	Please demonstrate with hydraulic calculation that the existing 525UC are adequate to collect, convey and discharge the surface runoff accrued on the application site and the overland flow intercepted from the adjacent lands.	Noted. Please be confirmed that the hydraulic calculation for existing 525UC is provided.
(ii)	The existing channel, to which the applicant proposed to discharge the stormwater from the subject site was not maintained by this office. The applicant should identify the owner of the existing drainage facilities and shall demonstrate that the drainage facilities can be practicably implemented and maintained. In the case that it is a local village drains, DO/YL should be consulted.	Noted.



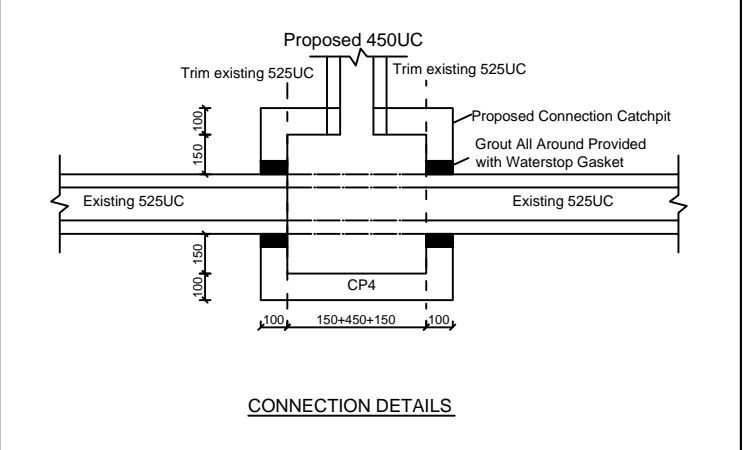
Note:

- Catchpits (CP5) with desilting facility shall follow CEDD standard drawing No. C2406I.
- Catchpit and UC follows Typical Details of Geotechnical Manual for Slope Fig.8.10 and Fig.8.11 respectively.
- The existing 450UC shall be made good upon completion of the drainage system up to DSD's satisfactory.

CRITICAL CATCHMENT AREA (refer to D02)
CATCHMENT AREA = 1693SQ.M
Q = 0.278CiA
= 0.278 * 0.95 * 250 * 1693 / 1000000
= 0.112 M3/S
= 6707 lit/min
PROVIDE 450HRUC (1:200) IS OK (FIG. 8.7)

LEGEND

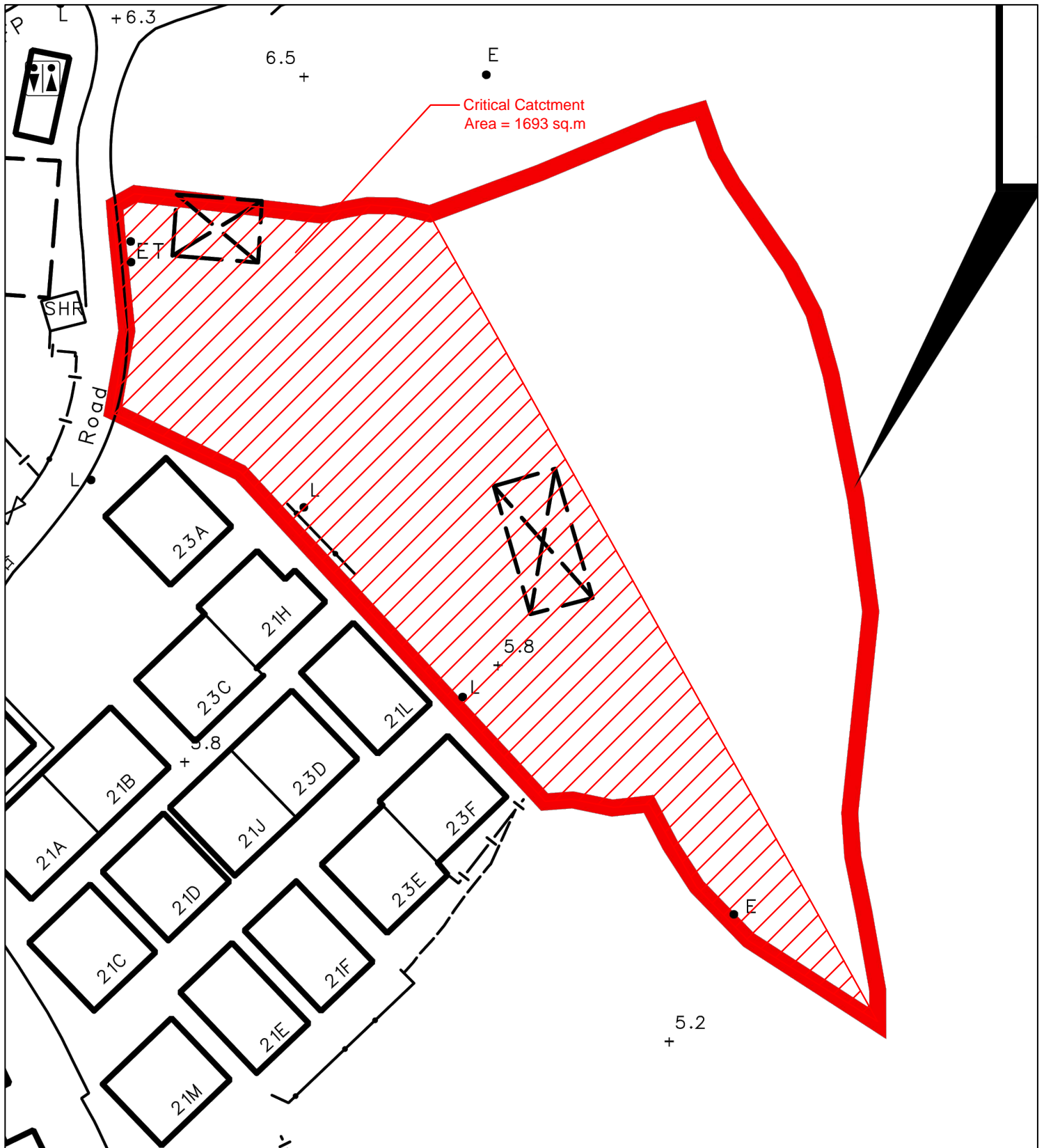
- CP Proposed CatchPit
- (a) Proposed 450HRUC (1:200) with Cast Iron Cover
- ☒ CP Existing CatchPit
- ══ Existing 525UC (1:200)



正宏工程顧問公司
CHING WAN ENGINEERING CONSULTANTS CO.

Project:
Proposed Temporary Public Vehicle Park (excluding Container Vehicle) for a Period of 5 Years at Various Lots in D.D. 128 and D.D. 129, Lau Fau San, Yuen Long, New Territories
(Application No.:A/HSK/308)

Title:		D01	
Drainage Proposal			
Drawn by:	DM	Date:	15-3-2024
Check by:	DM	Scale:	----



正宏工程顧問公司

CHING WAN ENGINEERING CONSULTANTS CO.

Project:
Proposed Temporary Public Vehicle Park (excluding Container Vehicle) for a Period of 5 Years at Various Lots in D.D. 128 and D.D. 129, Lau Fau San, Yuen Long, New Territories

(Application No.:A/HSK/308)

Title:

Catchment Area Plan
 (For Proposed 450UC)

D02

Drawn by:

DM

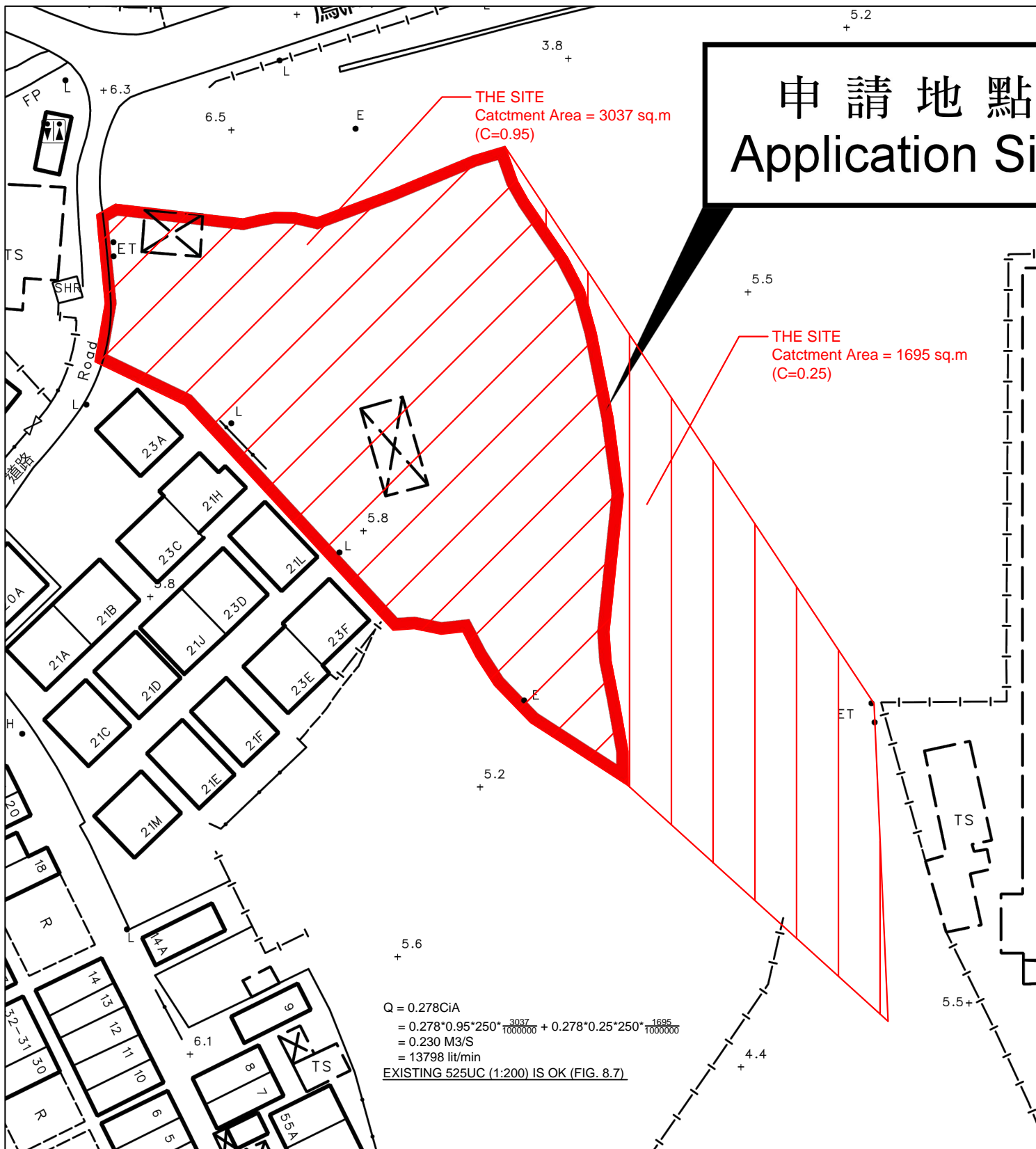
Date:

15-3-2024

Check by:

DM

Scale:



申請地點
Application Site

正宏工程顧問公司

CHING WAN ENGINEERING CONSULTANTS CO.

Project:
Proposed Temporary Public Vehicle Park (excluding Container Vehicle) for a Period of 5 Years at Various Lots in D.D. 128 and D.D. 129, Lau Fau San, Yuen Long, New Territories

(Application No.:A/HSK/308)

Title:

Catchment Area Plan
(For Existing 525UC)

D02A

Drawn by:

DM

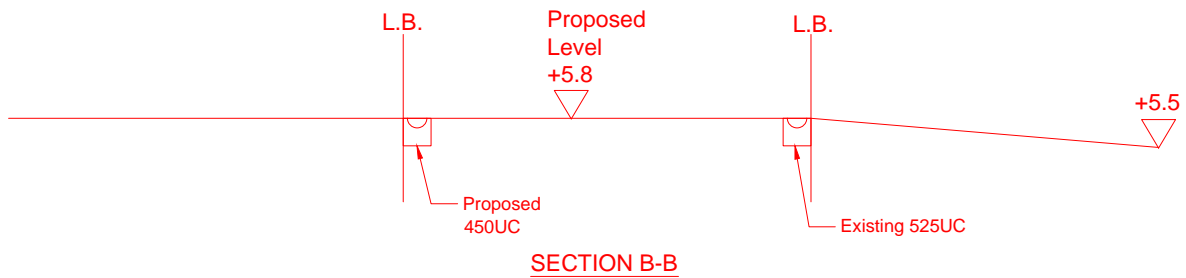
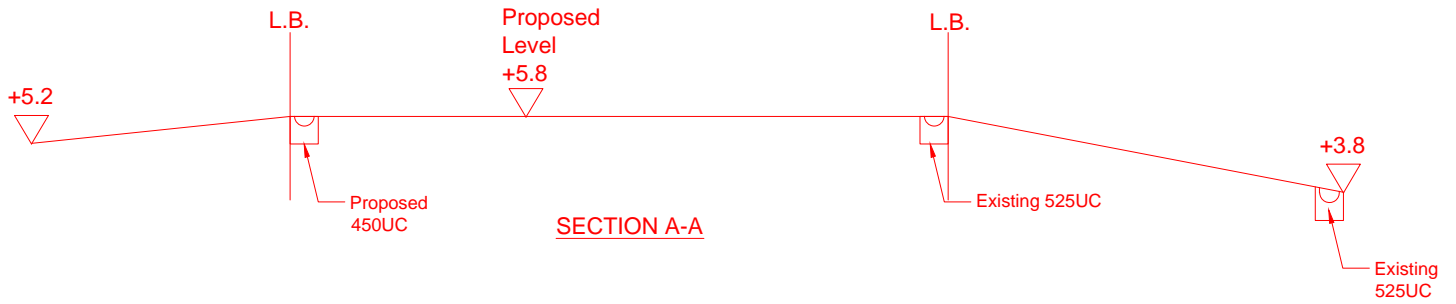
Date:

15-3-2024

Check by:

DM

Scale:



正宏工程顧問公司

CHING WAN ENGINEERING CONSULTANTS CO.

Project:
Proposed Temporary Public Vehicle Park (excluding Container Vehicle) for a Period of 5 Years at Various Lots in D.D. 128 and D.D. 129, Lau Fau San, Yuen Long, New Territories

(Application No.:A/HSK/308)

Title:

Drainage Proposal Sections

D03

Drawn by:

DM

Date:

19-2-2024

Check by:

DM

Scale:

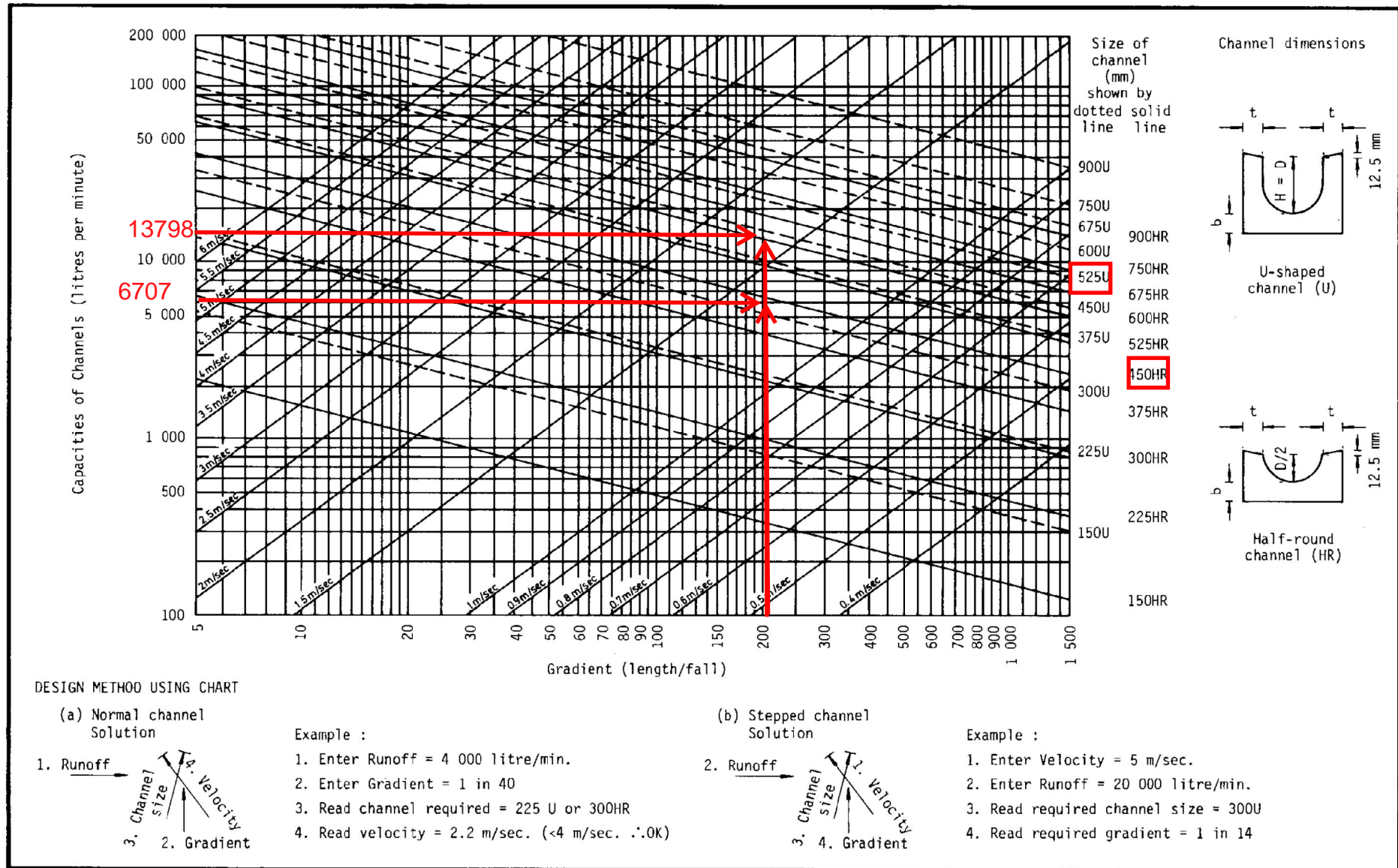
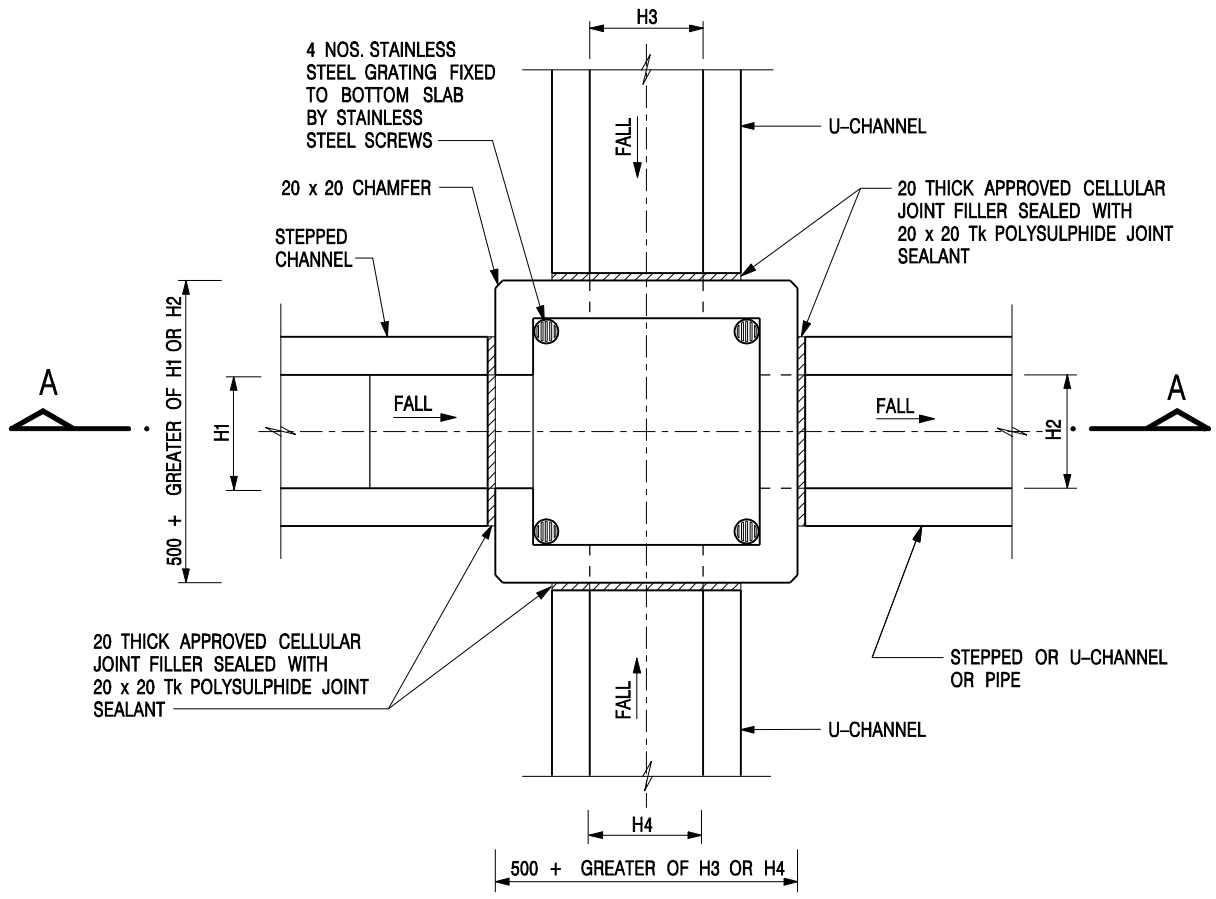
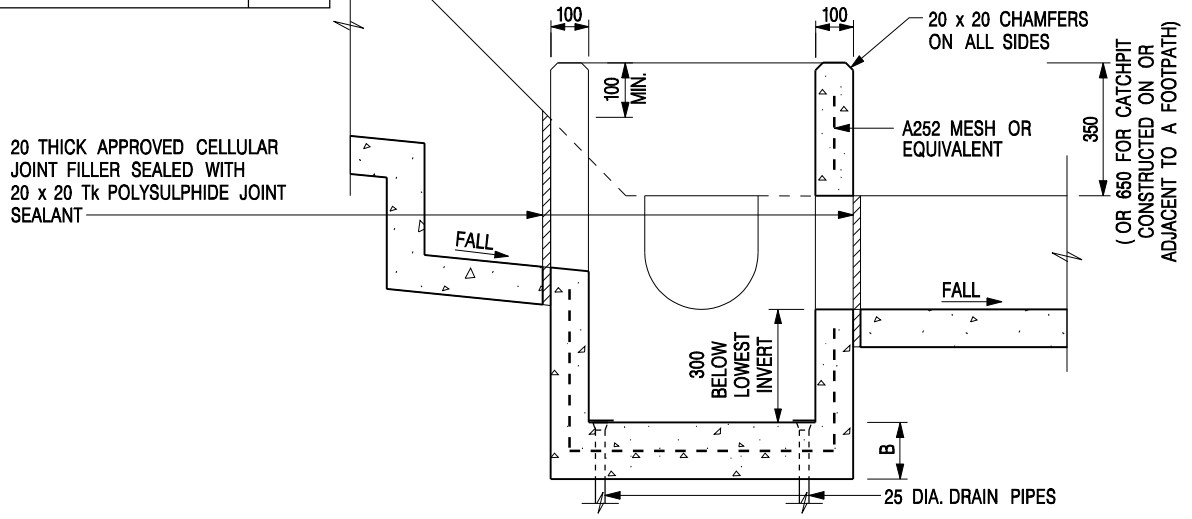


Figure 8.7 - Chart for the Rapid Design of Channels



NOMINAL SIZE (LARGEST OF H1, H2, H3 & H4)	B
300 - 600	150
675 - 900	175



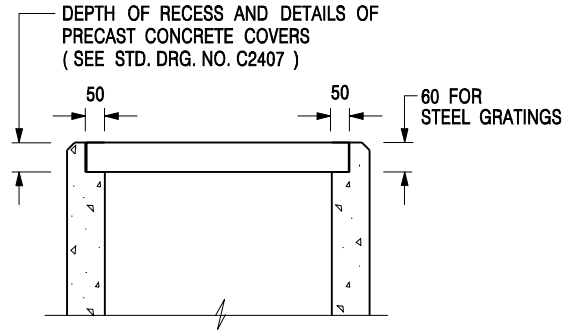
- NOTES:**
1. ALL DIMENSIONS ARE IN MILLIMETRES.
 2. REFER TO SHEET 2 FOR OTHER NOTES.

-	FORMER DRG. NO. C2406J.	Original Signed	03.2015
REF.	REVISION	SIGNATURE	DATE

CATCHPIT WITH TRAP
(SHEET 1 OF 2)

CEDD **CIVIL ENGINEERING AND DEVELOPMENT DEPARTMENT**

SCALE 1 : 20 **DRAWING NO.**
DATE JAN 1991 **C2406 /1**




**ALTERNATIVE TOP SECTION
FOR PRECAST CONCRETE COVERS / GRATINGS**

NOTES:

1. ALL DIMENSIONS ARE IN MILLIMETRES.
2. ALL CONCRETE SHALL BE GRADE 20 /20.
3. CONCRETE SURFACE FINISH SHALL BE CLASS U2 OR F2 AS APPROPRIATE.
4. FOR DETAILS OF JOINT, REFER TO STD. DRG. NO. C2413.
5. CONCRETE TO BE COLOURED AS SPECIFIED.
6. UNLESS REQUESTED BY THE MAINTENANCE PARTY AND AS DIRECTED BY THE ENGINEER, CATCHPIT WITH TRAP IS NORMALLY NOT PREFERRED DUE TO PONDING PROBLEM.
7. UPON THE REQUEST FROM MAINTENANCE PARTY, DRAIN PIPES AT CATCHPIT BASE CAN BE USED BUT THIS IS FOR CATCHPITS LOCATED AT SLOPE TOE ONLY AND AS DIRECTED BY THE ENGINEER.
8. FOR CATCHPITS CONSTRUCTED ON OR ADJACENT TO A FOOTPATH, STEEL GRATINGS (SEE DETAIL 'A' ON STD. DRG. NO. C2405) OR CONCRETE COVERS (SEE STD. DRG. NO. C2407) SHALL BE PROVIDED AS DIRECTED BY THE ENGINEER.
9. IF INSTRUCTED BY THE ENGINEER, HANDRAILING (SEE DETAIL 'G' ON STD. DRG. NO. C2405; EXCEPT ON THE UPSLOPE SIDE) IN LIEU OF STEEL GRATINGS OR CONCRETE COVERS CAN BE ACCEPTED AS AN ALTERNATIVE SAFETY MEASURE FOR CATCHPITS NOT ON A FOOTPATH NOR ADJACENT TO IT. TOP OF THE HANDRAILING SHALL BE 1 000 mm MIN. MEASURED FROM THE ADJACENT GROUND LEVEL.
10. MINIMUM INTERNAL CATCHPIT WIDTH SHALL BE 1 000 mm FOR CATCHPITS WITH A HEIGHT EXCEEDING 1 000 mm MEASURED FROM THE INVERT LEVEL TO THE ADJACENT GROUND LEVEL. AND, STEP IRONS (SEE DSD STD. DRG. NO. DS1043) AT 300 c/c STAGGERED SHALL BE PROVIDED. THICKNESS OF CATCHPIT WALL FOR INSTALLATION OF STEP IRONS SHALL BE INCREASED TO 150 mm.
11. FOR RETROFITTING AN EXISTING CATCHPIT WITH STEEL GRATING, SEE DETAIL 'F' ON STD. DRG. NO. C2405.
12. SUBJECT TO THE APPROVAL OF THE ENGINEER, OTHER MATERIALS CAN ALSO BE USED AS COVERS / GRATINGS.

-	FORMER DRG. NO. C2406J.	Original Signed	03.2015
REF.	REVISION	SIGNATURE	DATE

**CATCHPIT WITH TRAP
(SHEET 2 OF 2)**

 CIVIL ENGINEERING AND DEVELOPMENT DEPARTMENT	
SCALE 1 : 20	DRAWING NO.
DATE JAN 1991	C2406 /2

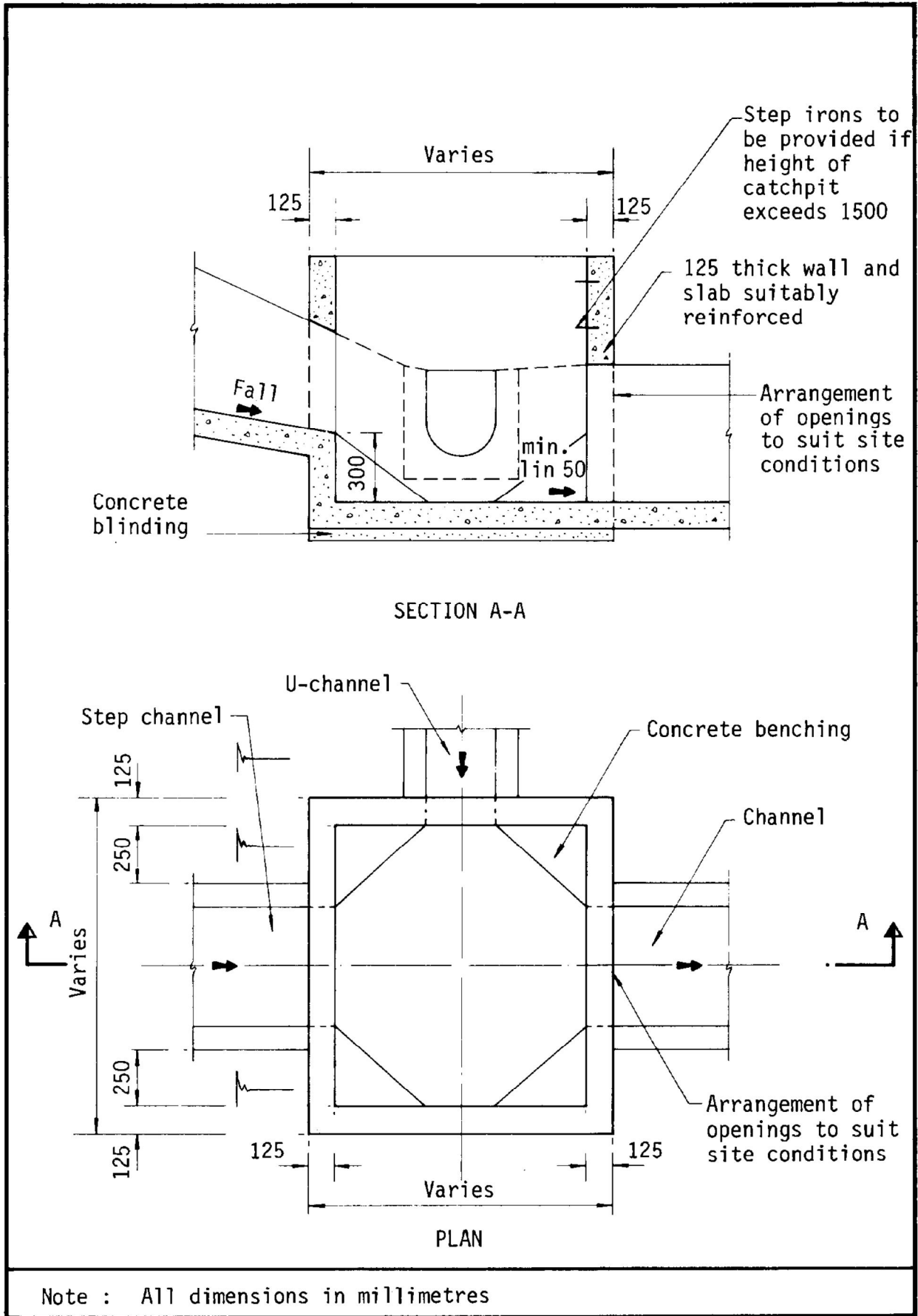
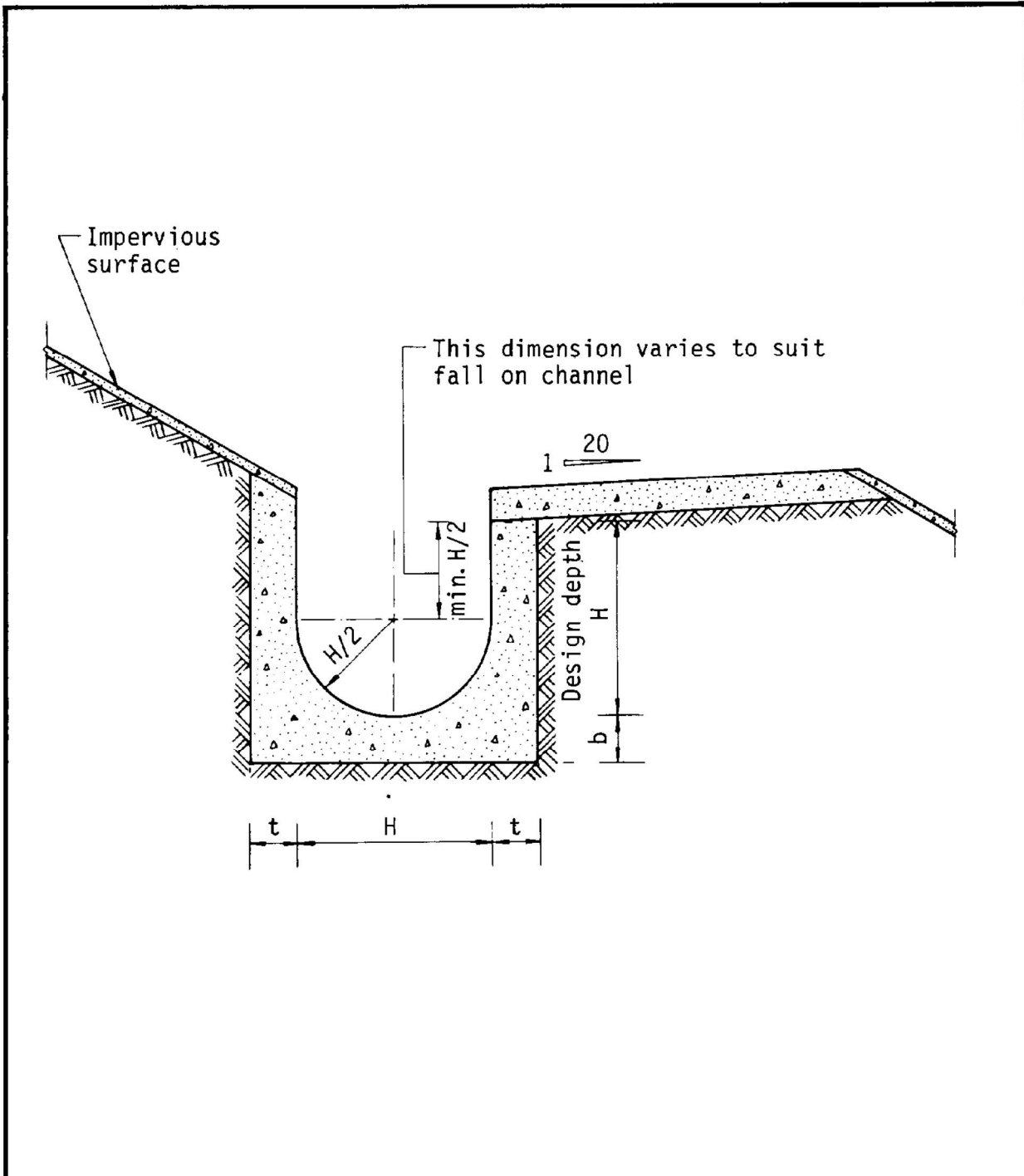


Figure 8.10 - Typical Details of Catchpits



Dimensions of U - channel

Nominal size of channel H (mm)	Thickness t (mm)	Thickness b (mm)
225 to 600	150	150
675 to 1200	175	225

Figure 8.11 - Typical U-channel Details

規 劃 署

屯門及元朗西規劃處
香港新界沙田上禾輦路1號
沙田政府合署14樓

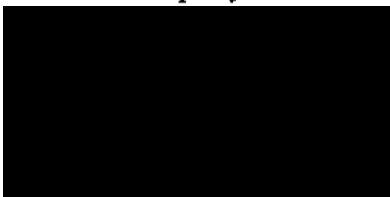
**By Fax ([REDACTED]) and Post****Planning Department**

Tuen Mun and Yuen Long West
District Planning Office
14/F, Sha Tin Government Offices,
1 Sheung Wo Che Road, Sha Tin,
N.T. (Hong Kong)

27 March 2025

來函檔號 Your Reference
本署檔號 Our Reference () in TPB/A/HSK/308
電話號碼 Tel. No. : 2158 6295
傳真機號碼 Fax No. : 2489 9711

R-riches Property Consultants Ltd.



Dear Sir/Madam,

Compliance with Approval Condition (f)
Planning Application No. A/HSK/308

I refer to your submission dated 17.3.2025 regarding the implementation of the drainage proposal for compliance with captioned approval condition. The relevant department has been consulted on your submission. Your submission is considered:

- Acceptable. The captioned condition has been complied with. Detailed departmental comments are at **Appendix I**.
- Acceptable. Since the captioned condition requires both the submission and implementation of the proposal, it has not been fully complied with. Please proceed to implement the accepted proposal for full compliance with the approval condition.
- Not acceptable. The captioned condition has not been complied with.

Should you have any queries on the departmental comments, please contact Mr. Daniel CHAN (Tel: [REDACTED]) of the Drainage Services Department direct.

Yours faithfully,

(Ms. Sherry KONG)
for District Planning Officer/
Tuen Mun and Yuen Long West
Planning Department



c.c

CE/MN, DSD

(Attn: Mr. Daniel CHAN)

Internal

CTP/TPB2

Appendix I

A/HSK/308 – Compliance with Approval Condition (f)

Comments from the Drainage Services Department:

The drainage facilities shall be properly designed, constructed and maintained in good condition without causing adverse drainage impact to the adjacent area at all times, and the applicant is required to rectify/modify the drainage systems if they are found to be inadequate or ineffective to accommodate the additional runoff arisen from the application. The applicant/owner shall also be liable for and shall indemnify claims and demands arising out of damage or nuisance caused by failure or ineffectiveness of the drainage systems caused by their application.

Our Ref.: DD128 Lot 73 S.A & VL
Your Ref.: TPB/A/HSK/308

The Secretary,
Town Planning Board,
15/F, North Point Government Offices,
333 Java Road,
North Point, Hong Kong

By Email

17 March 2025

Dear Sir,

Compliance with Approval Condition (f)

**Proposed Temporary Public Vehicle Park (excluding Container Vehicle) for a Period of 5 Years
in "Village Type Development" Zone, Various Lots in D.D. 128 and D.D. 129,
Lau Fau San, Yuen Long, New Territories**

(S.16 Planning Application No. A/HSK/308)

We are writing to submit a set of photographic records of the completed drainage facilities provided by the applicant at the application site for compliance with approval condition (f) of the subject application, i.e. *the implementation of the drainage proposal (Appendix I)*.

Should you require more information regarding the application, please contact our Mr. Danny NG at [REDACTED] or the undersigned at your convenience. Thank you for your kind attention.

Yours faithfully,

For and on behalf of
R-riches Property Consultants Limited

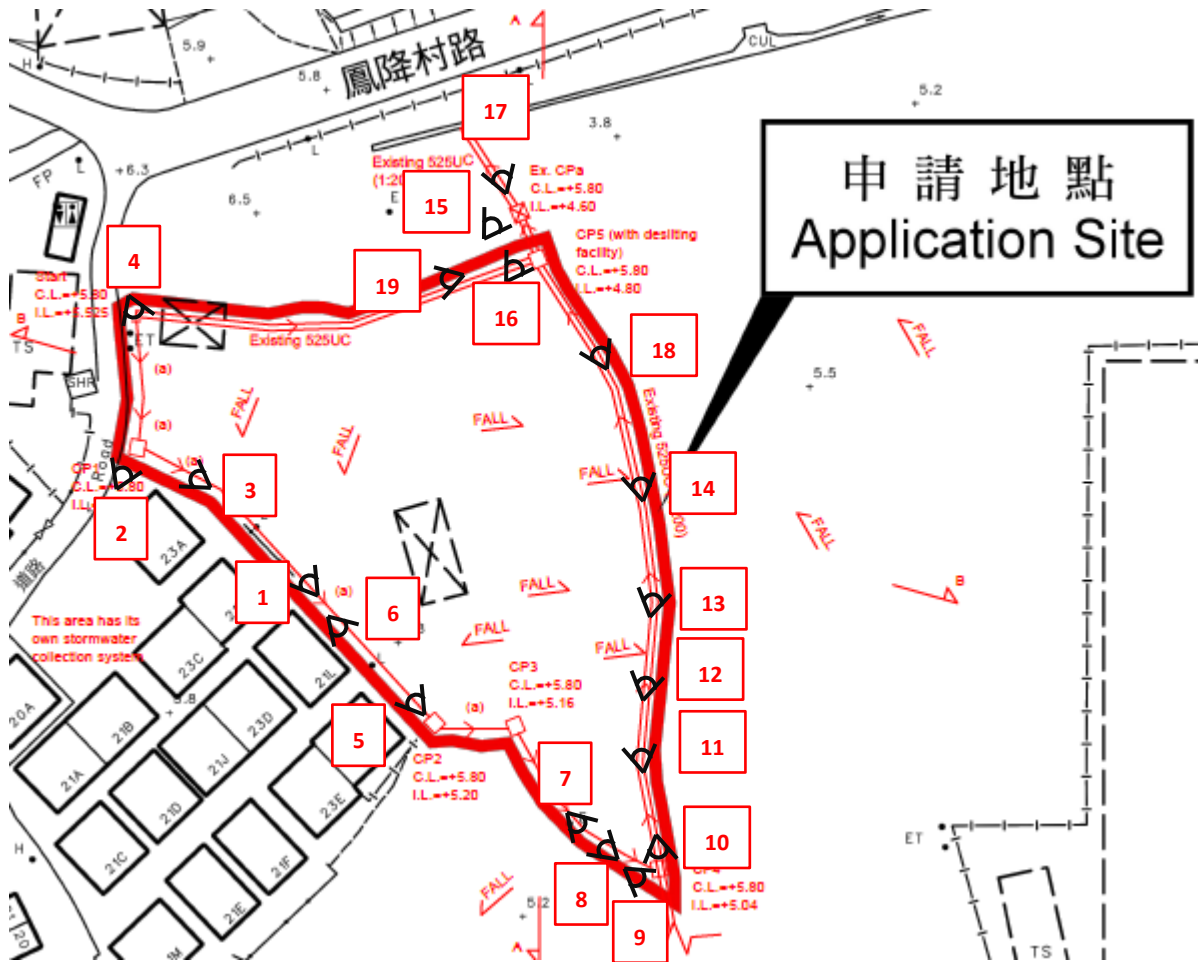
 

Kevin LAM
Planning Assistant



Proposed Temporary Public Vehicle Park (excluding Container Vehicle) for a Period of 5 Years
in "Village Type Development" Zone, Various Lots in D.D. 128 and D.D. 129,
Lau Fau San, Yuen Long, New Territories

(S.16 Planning Application No. A/HSK/308)



1



2



3



4



5



6



7



8



9



10



11



12



13



14



15



16



17



18



19

