

**Section 16 Planning Application for Proposed Religious
Institution and Columbarium (Partial Redevelopment
of Prajna Dhyana Temple)**

Tree Preservation Proposal

20th April 2026

Prepared By:

SCENIC Landscape Studio Limited



Project Title	Section 16 Planning Application for Proposed Religious Institution and Columbarium (Partial Redevelopment of Prajna Dhyana Temple)
Report Title	Tree Preservation Proposal

Revision	Date	Complied by:	Checked by:	Approved by:	Description
-	20251106	Jerry Han	Jeffrey Leung	John Charters	Draft to Client
A	20251212	Jerry Han	Jeffrey Leung	John Charters	Final to Client
B	20251218	Jerry Han	Jeffrey Leung	John Charters	Revision
C	20260115	Jerry Han	Jeffrey Leung	John Charters	Revision
D	20260420	Jerry Han	Jeffrey Leung	John Charters	Revision

Table of Contents

1.0	Introduction
2.0	Existing Site Description
3.0	Project Description
4.0	Existing Vegetation
5.0	Recommendations
6.0	Preliminary New Tree Planting Proposal
7.0	Relevant Recognised Standards for Tree Works
8.0	Conclusion

Tables

Table 4.1	Existing Tree Species Summary
Table 5.1	Summary of Tree Recommendations for Surveyed Trees
Table 6.1	New Tree Planting Ratios
Table 6.2	Preliminary New Tree Planting Proposals

Annexes

Annex I	Tree Location Plan
Annex II	Tree Assessment Schedule
Annex III	Photographic Record of Existing Trees
Annex IV	Tree Recommendation Plan
Annex V	New Tree Planting Plan

1.0 Introduction

- 1.1 SCENIC Landscape Studio Limited have been commissioned to prepare a Tree Preservation Proposal for the Proposed Religious Institution and Columbarium (Partial Redevelopment of Prajna Dhyana Temple) Tung Chung, Lantau Island (hereafter referred to as "Application Site").
- 1.2 A s.16 Application for the proposed development was submitted to Planning Department in July 2025, who have subsequently sought further details on the existing trees and proposed new tree planting within the site. These queries are addressed within the enclosed report.
- 1.3 The Tree Preservation Proposal outlines the findings of the tree survey and describes the type, number and condition of the existing trees found within the site. The proposal also identifies the trees found in conflict with the Proposed Development and makes recommendations for their proposed treatment and provides detailed compensatory planting proposals to compensate for the loss of these trees.
- 1.4 This tree preservation proposal adopts an individual tree survey approach in broad accordance with Lands Administration Office Practice Note Number 6/2023 "Processing of Tree Preservation and Removal Proposals for Building Development in Private Projects". The tree survey was undertaken in November 2025.

2.0 Existing Site Description

- 2.1 The Application Site has a total area of about 3,434.6m² and currently falls within the "Government, Institution or Community" ("G/IC") zone and "Green Belt" ("GB") zone on the Approved Tung Chung Town Centre Area Outline Zoning Plan (OZP) No. S/I-TCTC/24. At present, the application site is occupied by the main temple, the Ksitigarbha Bodhisattva Hall (ancillary columbarium) and several structures (religious supporting facilities). There are informal garden areas between the buildings supporting a range of trees, shrubs and lawn areas.

3.0 Project Description

- 3.1 The Proposed Scheme comprises for proposed partial redevelopment of the Temple and ancillary columbarium. The development proposal comprises the retention of the main temple and the Ksitigarbha Bodhisattva Hall (ancillary columbarium) and connected modifications and conversions to adjacent buildings. The development proposal also involves a new 3-storey amenity block over 1-storey of basement, which provides a series religious facilities such as multi-function purpose religious hall, classroom/canteen, office, meditation/ training rooms, religious chamber room, staff quarters, and suchlike. Furthermore, a 2-storey religious cum columbarium block over 1-storey of basement to accommodate the additional 6,628 niches is proposed at a secluded part of the site.
- 3.2 The site vehicular access will be from the south-eastern end of the site leading to an open-air area for internal transport facilities. At the central area of the site a Temple Courtyard will include a lotus pond as a welcome feature for visitors. Within this external area there will also be a series of landscape features and meaningful religious decorations such as a memorial garden, religious bell tower, and religious wall. The memorial garden comprises a landscape pathway towards the bell tower and a garden of remembrance.

4.0 Existing Vegetation

- 4.1 A total of 16 nos. trees were originally identified within the Planning Application boundary. Of these 5 nos. trees have been checked on site and found to be marginally undersized specimens (DBH <95mm at 1300mm above ground level). A further large tree just outside the site, but at a central location within the proposed development (T50) has also been surveyed, for context. As such a total of 12 trees are surveyed, as well as the 5 nos. undersized trees.
- 4.2 The existing tree locations are illustrated on **Annex I – Tree Location Plan** and **Annex II - Tree Assessment Schedule** provides an identification of numbers of tree species and recommendations for the treatment of the trees and **Annex III – Tree Photographic Record** provides a visual reference for the assessment.
- 4.3 **Table 4.1** below lists the tree species surveyed and their relative abundance and describes their conservation value (native or exotic).

Table 4.1 Existing Tree Species Summary

Botanical Name	Chinese Name	No. of Trees within Development Site	No. of Trees outside Development Site	Native (N) Exotic (E)	Status in Hong Kong
<i>Artocarpus heterophyllus</i> Lam.	菠蘿蜜	1		E	Common
<i>Aquilaria sinensis</i>	土沉香	1		N	Cap. 586
<i>Averrhoa carambola</i> L.	楊桃	1*		E	Common
<i>Bischofia javanica</i>	秋楓	2		N	Common
<i>Bridelia tomentosa</i>	土蜜樹	1*		N	Common
<i>Clausena lansium</i>	黃皮	1*		E	Common
<i>Cornus wilsoniana</i>	光皮榿木	1		E	Uncommon
<i>Ficus microcarpa</i>	細葉榕	1		N	Common
<i>Ficus religiosa</i>	菩提樹	1	1	N	Common
<i>Litchi chinensis</i>	荔枝	3*		E	Common
<i>Mangifera indica</i>	芒果	1		E	Common
<i>Pouteria campechiana</i>	蛋黃果	1		E	Common
<i>Psidium guajava</i> L.	番石榴	2*		E	Common
Total		16* (11)	1		

*Including undersized trees

- 4.4 The undersized trees include four small fruit trees (T15 *Litchi chinensis*, T73 *Averrhoa carambola*, T74 *Psidium guajava*, and T80 *Clausena lansium*) and a specimen of *Bridelia Tormentosa* (T17). Although indicated as having a girth of 0.6m, as shown in the photographic record at **Annex III**, the trunk of T17 has previously snapped off at a height less than 1300mm above the ground, and as such it is not considered to meet the definition of a tree. Discounting these 5 nos. undersized trees, the most numerous existing trees within the site are *Litchi chinensis* (2 nos.) and *Bischofia javanica* (2 nos.).
- 4.5 One specimen of what appears to be *Cornus wilsoniana* is identified within a raised planter at the centre of the site. This is an exotic species which is not commonly occurring in Hong Kong and It is understood that this tree was imported from a more northerly part of China some years ago.

- 4.6 The survey identified one specimen of *Aquilaria sinensis* (T59) which is generally protected in Hong Kong under Protection of Endangered Species of Animals and Plants Ordinance (Cap. 586) and has been rated “Vulnerable” in China Plant Red Data Book. There are no trees within the Development Site registered as Old and Valuable Trees (DEVB TC(W) No. 5/2020 Registration of Old and Valuable Trees (OVT) and Guidelines for their Preservation).
- 4.7 Two trees are identified with DBH greater than 750mm (but less than 1000mm), with 10m spread and over 9m height. These are native tree species (T58: *Ficus macrocarpa* and T71: *Bischofia javanica*). Whilst these trees are of large stature it does not appear that they meet the criteria to be categorized as a “Tree of Particular Interest’ (TPI) in accordance with para. 3.3.1 of the Guidelines for Tree Risk Assessment and Management Arrangement promulgated by DEVB.

5.0 Recommendations

- 5.1 The Proposed Scheme fully utilises the Development Site to create a connected and functional built form, whilst also responding to the existing landscapes and developments neighbouring the site. Impacts on the existing trees have been avoided wherever possible.
- 5.2 **Table 5.1** provides a summary of the recommendations for the treatment of the existing trees.

Table 5.1 Summary of Tree Recommendations for Surveyed Trees

Recommendation	Development Site		Outside Development Site	
	Number of Trees	%Trees	Number of Trees	%Trees
Trees to be retained	4	36%	1	100%
Trees to be transplanted	2	18%	0	0%
Trees to be felled	5	46%	0	0%
Total number of trees	11	100%	1	100%

- 5.3 The recommendations for the treatment of each of the trees is contained within **Annex III - Tree Assessment Schedule** and shown on **Annex V - Tree Recommendation Plan**.

Preservation of Existing Trees

- 5.4 As described above, the existing site conditions and the functional requirements for the development of the site will result in much of the site being utilised for the Proposed Scheme. Nevertheless, four trees can be preserved within this new development footprint. The two large native trees T58: *Ficus macrocarpa* and T71 *Bischofia javanica* are proposed to be retained in the proposed planting beds at the southeastern corner and northern side of the site. Another existing native tree T65: *Bischofia javanica* and an existing *Litchi chinensis* (T68) can also be retained as part of the future landscape within the site.

Transplantation of the Existing Trees

- 5.5 All the trees in conflict with the proposed development have been assessed for feasibility of transplantation, and two trees are considered suitable. The specimen of *Aquilaria sinensis* (T59) is a relatively small tree in fair health and condition. T59 conflicts with the proposed vehicular circulation area at the eastern side of the site and is proposed to be move to a proposed planter near the site boundary. The specimen of *Cornus wilsoniana* is in relatively poor condition, with evident health and form related defects. However, the tree has been planted in a raised circular planter, which will have contained its root spread and would allow relatively easy access for transplanting preparations. Owing to its long association with the Temple its retention through transplantation is preferred.

5.6 Two other trees were previously suggested to be transplanted. One of these is T17, which has now been discounted as it is considered undersized.

Tree Felling Proposal

5.7 The four trees recommended for felling are in conflict with the proposed scheme. These four trees are fruit tree species, which tend to be short lived exotic species which would typically therefore not be deemed candidates for transplanting as the planting of new native trees in their place would be considered more beneficial to the future landscape.

5.8 The recommendations for tree retention and transplantation are provided in **Annex II - Tree Assessment Schedule** and this proposed treatment is presented on **Annex iV – Tree Recommendation Plan**.

6.0 Preliminary New Tree Planting Proposal

6.1 To compensate for the trees recommended for felling the new tree planting plan presented as **Annex V – New Tree Planting Plan**. **Table 6.1** below provides a summary of the new tree planting proposals for the site.

Table 6.1: New Tree Planting Ratios (Within Application Site)

New Tree Planting Metrics	Statistic / Ratio	Tree Size
Number of felled trees	5	
Number of new trees	No less than 18	Heavy standard sized trees
New Tree Planting Ratio (by number) (Number of newly planted trees : number of trees felled)	18 : 5 (3.6 : 1)	

6.2 The new trees will form part of the overall landscape design proposal which will be developed during the detailed design stage of the project. A summary of the preliminary new tree planting proposals is provided in **Table 6.2** below.

Table 6.2: Preliminary New Tree Planting Proposals

Botanical Name	Chinese Name	Native / Exotic	Tree Size	Spacing / Planting Centres (mm)	Number
<i>Cratogeomys cochinchinense</i>	黃牛木	Native	Heavy standard	4000	4
<i>Machilus chinensis</i>	华润楠	Native	Heavy standard	3000	4
<i>Podocarpus macrophyllus</i>	羅漢松	Native	Heavy standard	3000	6
<i>Polyspora axillaris</i>	大頭茶	Native	Heavy standard	3000	4

6.3 Heavy standard sized trees are defined as follows:

Heavy Standard:

- A sturdy, straight stem with stem height from the root collar to the lowest branch between 1800 mm and 2400 mm above the soil level;
- Total height above soil level between 3500 mm and 5000mm;

- Stem diameter measured at a point 1300mm above the root collar shall be over 75 mm to 145mm;
- A well-balanced branching head, or a well-defined straight and upright leader with branches growing out from the stem with good symmetry, and a minimum length of 800mm;
- A live-crown ratio will range between 40-60%;
- A rootball not less than 750 mm in diameter and 400 mm in depth;
- Grown in a container not less than 750 mm in diameter and 600 mm deep; and
- Free from any kind of pest, fungi, disease and parasitic plants.

6.4 The height of all trees shall be measured above root collar, and the diameter of all stems to be measured at a height of 1300m above ground level.

7.0 Relevant Recognised Standards for Tree Preservation and Protection

7.1 The tree preservation, protection and transplanting proposals will be undertaken in accordance with the following:

- Appendix VIII - Particular Specification for Protection of Existing Trees and Tree Transplanting;
- BS 3998: 2010 Recommendations for Tree Work;
- BS 4043: 1989 Recommendations for transplanting root-balled trees;
- BS 4428 1989 Code of practice for general landscape operations (excluding hard surfaces);
- BS 5837: 2012 Trees in relation to Construction;
- ArchSD General Specification, Section 25 (2022 edition); and
- Handbook on Tree Management prepared by the Greening, Landscape and Tree Management Section of Development Bureau
(<https://www.greening.gov.hk/en/resource-centre/technical-circulars-practice-notes-and-guidelines/index.html>)

8.0 Conclusion

8.1 The tree survey identified some 10 nos. trees and 5 nos. undersized trees within the Development Site boundary. A further 1 No. tree outside the site boundary but at a prominent central position has also been surveyed. The survey identified several fruit tree species and common native tree species. A small specimen of *Aquilaria chinensis* (protected under Cap. 586) and an uncommon species; *Cornus wilsoniana* are also identified within the site area.

8.2 Unfortunately owing the requirements for the construction and site formation proposals six of the surveyed trees shall need to be removed. All the affected trees recommended for removal have a low suitability for transplantation or are deemed to be unsuited to the future landscape. Of the surveyed trees within the site 3nos. are proposed to be retained and 2nos. transplanted back into the new landscape.

8.3 The new tree planting proposal shall compensate for the trees affected by the proposal with the planting of a minimum. 18 nos. of good quality heavy standard trees of species native to Hong Kong, representing a replanting ratio of **3 : 1** (new trees planted : trees felled) inside the Development Site.

Annexes


Annex I
Tree Location Plan

North

SCENIC landscape studio limited

12/F So Hong Commercial Building, 41-47 Jervois Street, Sheung Wan, Hong Kong Telephone: +852 2468 2422 Email: scenic@studioscenic.com Fax: +852 3016 2422

Legend

-  SITE BOUNDARY
-  +6.36 EXISTING LEVEL
-  EXISTING TREE
-  EXISTING UNDERSIDED TREE
-  EXISTING TREE (OUTSIDE SITE BOUNDARY)

General notes

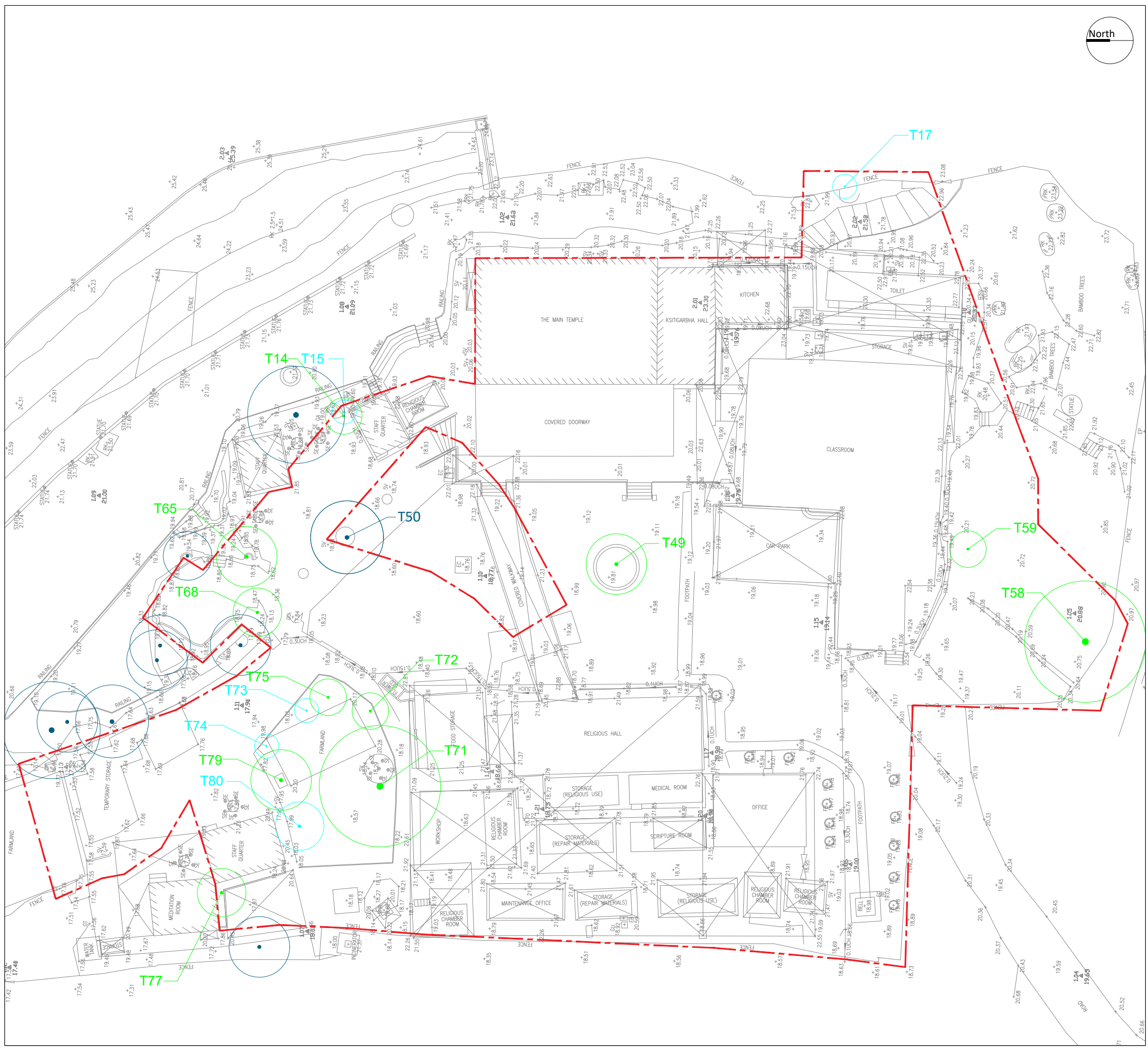
Rev.	Date	Description	Initial

	Name:	Signed:	Date:
Designed by:	CJF		
Drawn by:	DN		
Checked by:	CJF		
Approved by:	JBC		

Project Title:
Section 16 Planning Application for Proposed Religious Institution and Columbarium (Partial Redevelopment of Prajna Dhyana Temple)

Drawing Title:
TREE LOCATION PLAN

Drawing Number: TPCP003-TL001	Revision: -
Project Number: TPCP003	Scale: 1:400 @ A3
	Date: 18/12/2025



Annex II

Tree Assessment Schedule

Tree Assessment Schedule

Address: Prajna Dhyana Temple, Shek Mun Kap, Tung Chung
Prepared by SCENIC Landscape Studio Limited
Field Survey conducted in November 2025
To be read in conjunction with drawing number TPCP003-TL001

Tree No.	Botanical Name	Chinese Name	Survey Size			Form			Health Condition				Structural Condition			Amenity Value			Suitability for Transplanting			Conservation Status (Protected by Cap. 96, CAP 586 etc. / NIL)	Location		Proposed Treatment			Justification	Remarks
			Girth (m)	Height (m)	Spread (m)	G	A	P	G	A	P	D	G	A	P	H	M	L	H	M	L		Slope	Flat	Retain	Trans	Fell		
T14	<i>Litchi chinensis</i>	荔枝	1.2	4.0	2.0			1		1				1		1			1	NIL		1			1	A,B,D,I	Maintrunk cut previously at about 2m height. Imbalanced regrowth of canopy. Growing on rocky ground, inhibiting transplantation		
T15	<i>Litchi chinensis</i>	荔枝	0.3	4.0	3.0					1				1				1	NIL		1						Undersized Tree - not counted as part of assessment. Growing on rocky ground, inhibiting transplantation		
T17	<i>Bridelia tomentosa</i>	土蜜樹	0.6	2.0	2.0			1		1				1		1		1	NIL	1							Main trunk snapped below 1300mm height above g.l. Grown comprises water sprouts arising from stump. Undersized Tree - not counted as part of assessment.		
T49	<i>Cornus wilsoniana</i>	光皮棟木	1.5	5.0	5.0		1			1				1					NIL		1		1				Main trunk hollow with large basal cavity. Regular pruning / pollarding. Dead branches and die back in canopy. Low leaf density.		
T50	<i>Ficus religiosa</i>	菩提樹	1.2	7.0	6.0		1			1				1		1			NIL		1	1					Tree is located outside the site, Constrained root zone.		
T58	<i>Ficus microcarpa</i>	細葉榕	3.0	9.0	10.0		1			1				1		1			NIL	1		1					Pruning stubs - previous pruning of major limbs evident, minor broken branches.		
T59	<i>Aquilaria sinensis</i>	土沉香	0.4	4.0	3.0		1			1				1			1		Cap.586		1		1				Co-dominant leaders. Dead branch at canopy		
T65	<i>Bischofia javanica</i>	秋楓	0.8	6.0	5.0	1				1				1		1			NIL		1	1					Constrained root zone.		
T68	<i>Litchi chinensis</i>	荔枝	0.8	5.0	4.0			1		1				1		1			NIL		1	1					Previous heavy canopy pruning, loss of central leader. Constrained root zone.		
T71	<i>Bischofia javanica</i>	秋楓	2.8	9.0	10.0		1			1				1		1			NIL		1	1					Asymmetrical canopy due to loss of major limbs on one side. Pruning stubs and dead wood and dead branches in canopy. Constrained root zone.		
T72	<i>Mangifera indica</i>	芒果	0.4	2.0	3.0		1			1				1		1			NIL		1			1	A,D,I	Lacking central leader. Slightly constrained root zone.			
T73	<i>Averrhoa carambola L.</i>	楊桃	0.2	2.0	2.0		1			1				1		1			NIL		1						Undersized Tree - not counted as part of assessment		
T74	<i>Psidium guajava L.</i>	番石榴	0.1	2.0	2.0		1			1				1		1			NIL		1						Undersized Tree - not counted as part of assessment		
T75	<i>Psidium guajava L.</i>	番石榴	0.5	3.0	3.0			1		1				1		1			NIL		1			1	A,D,I	Multi-stem form. Large pruning stubs			
T77	<i>Pouteria campechiana</i>	蛋黃果	0.4	5.0	4.0			1		1				1		1			NIL		1			1	A,D,I	Tree is growing in narrow planter between buildings. Co-dominant leaders.			
T79	<i>Artocarpus heterophyllus Lam.</i>	菠蘿蜜	0.7	5.0	5.0		1			1				1		1			NIL		1			1	A,D,I	leaning main trunk / asymmetrical form			
T80	<i>Clausea lansium</i>	黃皮	0.3	2.0	1.0		1			1				1		1			NIL		1						Undersized Tree - not counted as part of assessment		
						1	10	5	0	17	0	0	0	14	3	1	6	9	0	4	11		2	15	5	2	5		
						5.9%	58.8%	29.4%	0.0%	100.0%	0.0%	0.0%	0%	82%	18%	5.9%	35.3%	52.9%	0%	24%	65%		12%	88%	29.4%	11.8%	29.4%	17	
						G	A	P	G	A	P	D	G	A	P	H	M	L	H	M	L	Conservation Status	Slope	Flat	Retain	Trans	Fell	Total	

Legend

Tree Condition / Health

G Good
A Average
P Poor
D Dead

Tree Form

G Good
A Average
P Poor

Structural Condition

G Good High Survival Rate expected after transplantation
A Average Medium Survival Rate after transplantation
P Poor Low Survival Rate expected after transplantation

Justification for Tree Felling

- A Tree is in direct conflict with the proposed works.
- B Preparation of intact and sufficient-sized root ball not practical due to the topography (e.g. on rock, steep slope, shallow substratum, structures). Close proximity to other trees - roots intertwined.
- C Undesirable species, weedy species without special ecological significance or species creating maintenance problem.
- D Tree with poor health, structure or form (e.g. imbalanced form, leaning, with major cavity/cracks/splits).
- E Lack of access for transplantation machinery or vehicle.
- F Species with low survival rate after transplanting.
- G Tree has structural problem and may create hazard to public during root ball preparation and/or after transplantation while auxiliary supporting is not sufficient/ practical.
- H Unrecoverable form after transplanting (e.g. if substantial crown and root pruning are necessary to facilitate the transplanting).
- I Low amenity value.
- J Tree with evidence of over-maturity and onset of senescence.
- K Very large size (unless the feasibility to transplant has been considered financially reasonably and technically feasible).
- L Tree exhibits significant typhoon damage (unlikely to recover healthy / structurally safe form)

Amenity Value

H High
M Medium
L Low

Common species and good health, good condition and good form.
Common species of average health, average condition and average form.
Common species and little or no functional or visual value and poor health, poor condition and poor form.

Conservation Status

Conservation status (indicates rarity and protection status under relevant ordinances of a species in Hong Kong. References such as Rare and Precious Plants of Hong Kong, the IUCN Red List of Threatened Species and the Forests and Countryside Ordinance (Cap. 96) are used.) and ETWB TCW No. 29/2004 Registration of Old and Valuable Trees (OVT), and Guidelines for their preservation

Annex III

Photographic Record of Existing Trees



T14 (*Litchi chinensis*)

Photograph showing the overall form of the tree.



T49 (*Cornus wilsoniana*)

Photograph showing the overall form of the tree.



T58 (*Ficus microcarpa*)

Photograph showing the overall form of the tree.



T59 (*Aquilaria sinensis*)

Photograph showing the overall form of the tree.

R-Retain T-Transplant F-Remove D-Dead

Section 16 Planning Application for Proposed Religious Institution and Columbarium (Partial Redevelopment of Prajna Dhyana Temple)

Tree Photographic Record

SCALE	N.T.S.	DATE	APR 2026
CHECKED	JBC	DRAWN	DN
FIGURE NO.	TPCP003 TC		REV
			-





T65 (*Bischofia javanica*)

Photograph showing the overall form of the tree.



T68 (*Litchi chinensis*)

Photograph showing the overall form of the tree.



T71 (*Bischofia javanica*)

Photograph showing the overall form of the tree.



T71 (*Bischofia javanica*)

Photograph showing the tree defect.

R-Retain T-Transplant F-Remove D-Dead

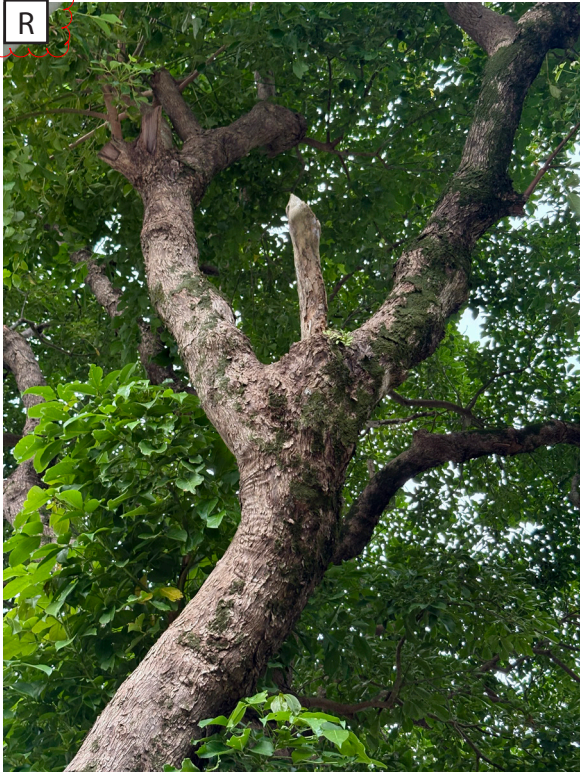
Section 16 Planning Application for Proposed Religious Institution and Columbarium (Partial Redevelopment of Prajna Dhyana Temple)

Tree Photographic Record

SCALE	N.T.S.	DATE	APR 2026
CHECKED	JBC	DRAWN	DN
FIGURE NO.	TPCP003 TC		REV A



R



T71 (*Bischofia javanica*)

Photograph showing the tree defect.

R



T71 (*Bischofia javanica*)

Photograph showing the tree defect.

F



T72 (*Mangifera indica*)

Photograph showing the overall form of the tree.

F



T75 (*Psidium guajava* L.)

Photograph showing the overall form of the tree.

R-Retain T-Transplant F-Remove D-Dead

Section 16 Planning Application for Proposed Religious Institution and Columbarium (Partial Redevelopment of Prajna Dhyana Temple)

Tree Photographic Record

SCALE	N.T.S.	DATE	APR 2026
CHECKED	JBC	DRAWN	DN
FIGURE NO.	TPCP003 TC		REV A





T77 (*Pouteria campechiana*)
 Photograph showing the overall form of the tree.



T79 (*Artocarpus heterophyllus* Lam.)
 Photograph showing the overall form of the tree.



T50 (*Ficus religiosa*)
 Photograph showing the overall form of the tree.

R-Retain T-Transplant F-Remove D-Dead

Section 16 Planning Application for Proposed Religious Institution and Columbarium (Partial Redevelopment of Prajna Dhyana Temple)

Tree Photographic Record

SCALE	N.T.S.	DATE	APR 2026
CHECKED	JBC	DRAWN	DN
FIGURE NO.	TPCP003 TC		REV -





T15 (*Litchi chinensis*)

Photograph showing the overall form of the tree.



T17 (*Bridelia tomentosa*)

Photograph showing the overall form of the tree.



T17 (*Bridelia tomentosa*)

Photograph showing the trunk <1300MM.



T73 (*Averrhoa carambola* L.)

Photograph showing the overall form of the tree.

Section 16 Planning Application for Proposed Religious Institution and Columbarium (Partial Redevelopment of Prajna Dhyana Temple)

Undersized Tree Photographic Record

SCALE	N.T.S.	DATE	NOV 2025
CHECKED	JBC	DRAWN	DN
FIGURE NO.	TPCP003 UT		REV
			-





T74 (*Averrhoa carambola* L.)
 Photograph showing the overall form of the tree.



T80 (*Clausena lansium*)
 Photograph showing the overall form of the tree.

Section 16 Planning Application for Proposed Religious Institution and Columbarium (Partial Redevelopment of Prajna Dhyana Temple)

Undersized Tree Photographic Record

SCALE	N.T.S.	DATE	NOV 2025
CHECKED	JBC	DRAWN	DN
FIGURE NO.	TPCP003 UT		REV
			-




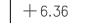
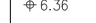





Annex IV
Tree Recommendation Plan

North

SCENIC landscape studio limited

12/F So Hong Commercial Building, 41-47 Jervois Street, Sheung Wan, Hong Kong Telephone: +852 2468 2422 Email: scenic@studioscenic.com Fax: +852 3016 2422

Legend

-  SITE BOUNDARY
-  EXISTING LEVEL
-  PROPOSED LEVEL
-  PROPOSED ARCH SCHEME
-  EXISTING TREE TO BE RETAINED
-  EXISTING TREE TO BE RETAINED (OUTSIDE SITE BOUNDARY)
-  EXISTING TREE TO BE FELLED
-  EXISTING TREE TO BE TRANSPLANTED

General notes

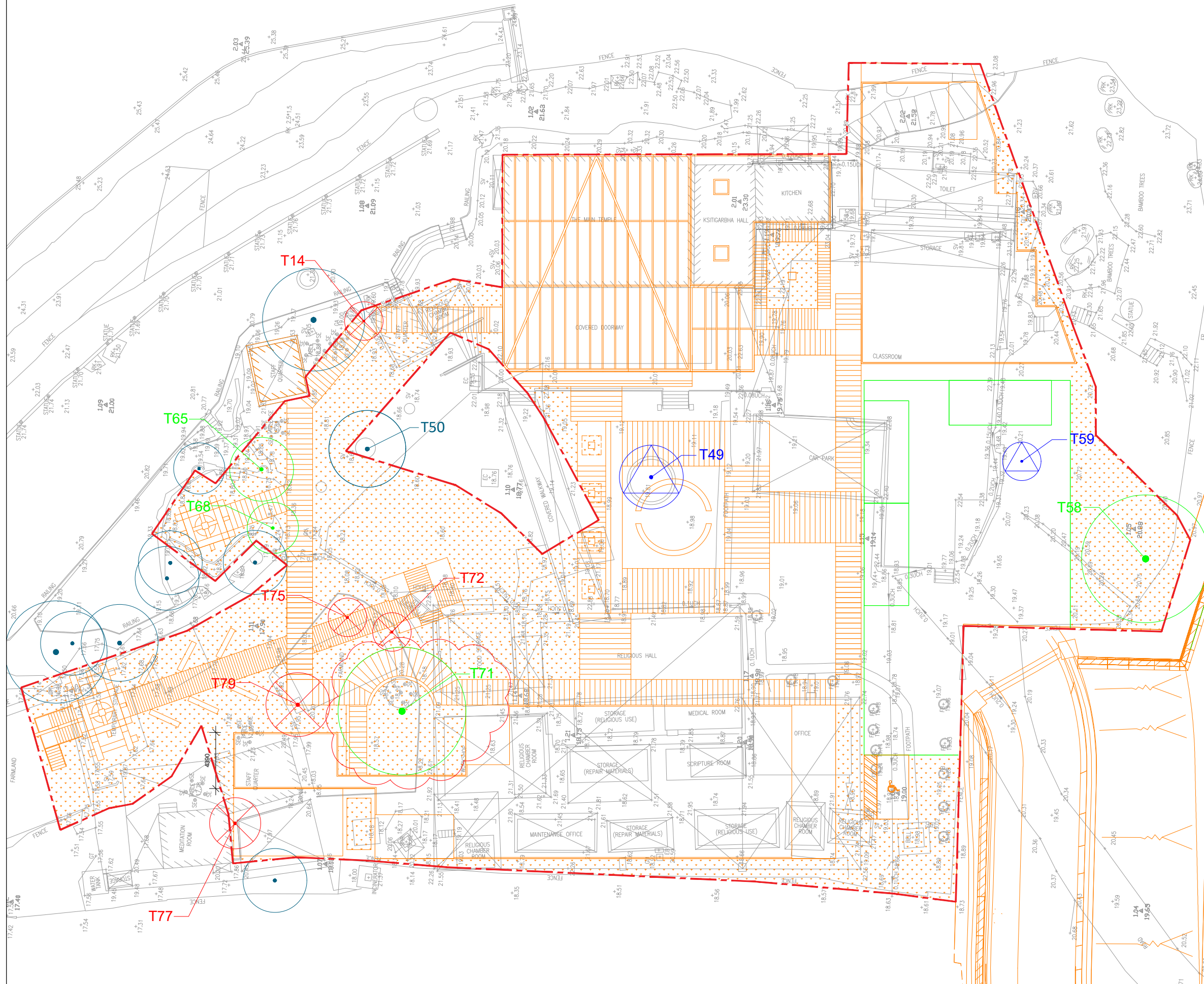
Rev.	Date	Description	Initial
A	20/04/2026	REVISION	
Revision			

	Name:	Signed:	Date:
Designed by:	CJF		
Drawn by:	DN		
Checked by:	CJF		
Approved by:	JBC		

Project Title:
Section 16 Planning Application for Proposed Religious Institution and Columbarium (Partial Redevelopment of Prajna Dhyana Temple)

Drawing Title:
TREE RECOMMENDATION PLAN

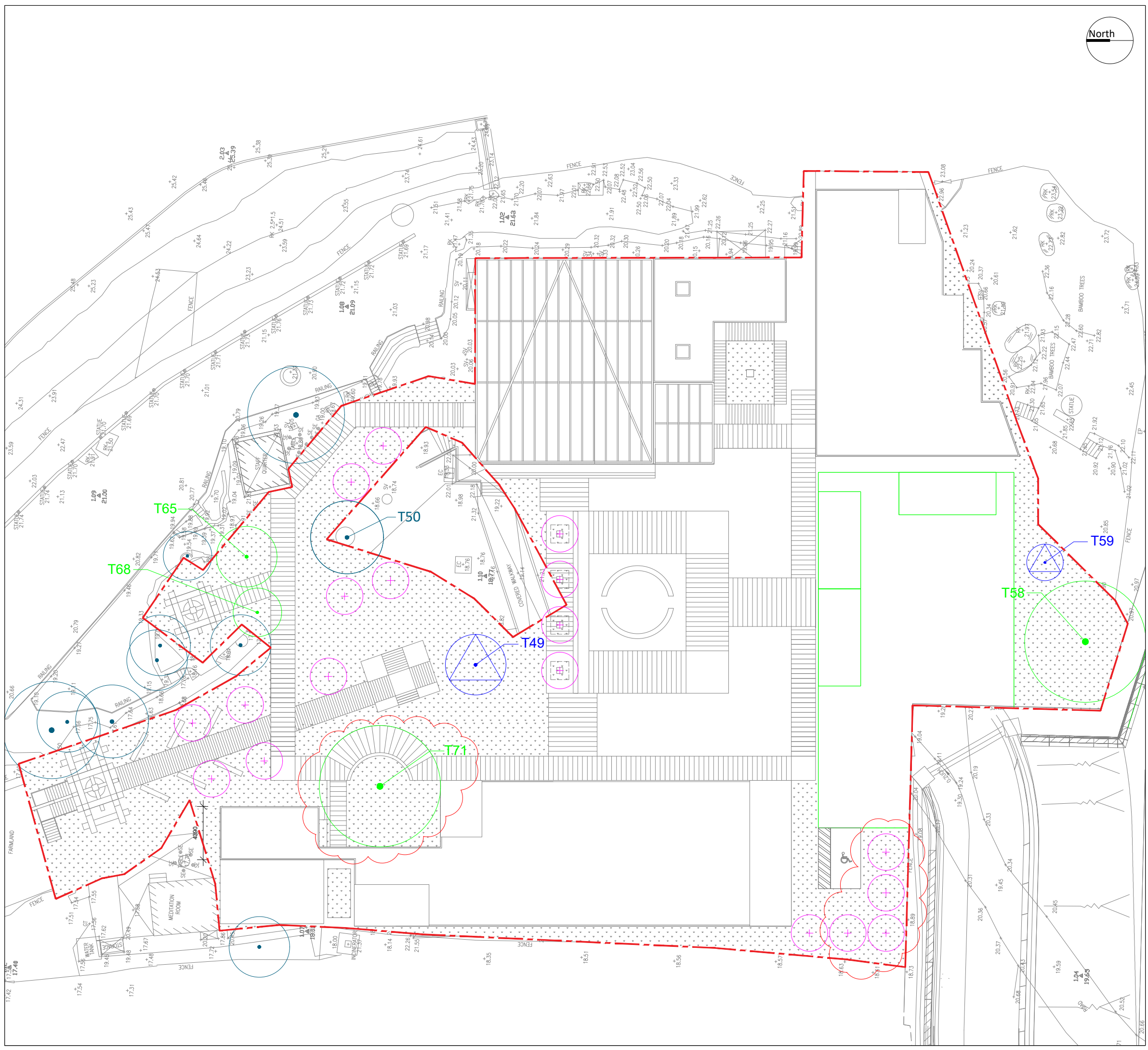
Drawing Number: TPCP003-TR001	Revision: A
Project Number: TPCP003	Scale: 1:400 @ A3
	Date: 20/04/2026



Annex V

New Tree Planting Plan

North



SCENIC landscape studio limited

12/F So Hong Commercial Building, 41-47 Jervois Street, Sheung Wan, Hong Kong Telephone: +852 2468 2422 Email: scenic@studioscenic.com Fax: +852 3016 2422

Legend

- SITE BOUNDARY
- + 6.36 EXISTING LEVEL
- Φ 6.36 PROPOSED LEVEL
- [Arch Symbol] PROPOSED ARCH SCHEME
- [Tree Icon] EXISTING TREE TO BE RETAINED
- [Tree Icon] EXISTING TREE TO BE RETAINED (OUTSIDE SITE BOUNDARY)
- [Tree Icon] TRANSPLANTED TREE
- [Tree Icon] NEW TREE PLANTING

General notes

Rev.	Date	Description	Initial
A	20/04/2026	REVISION	

	Name:	Signed:	Date:
Designed by:	CJF		
Drawn by:	DN		
Checked by:	CJF		
Approved by:	JBC		

Project Title:
Section 16 Planning Application for Proposed Religious Institution and Columbarium (Partial Redevelopment of Prajna Dhyana Temple)

Drawing Title:
NEW TREE PLANTING PLAN

Drawing Number: TPCP003-TC001	Revision: A
Project Number: TPCP003	Scale: 1:400 @ A3
	Date: 20/04/2026