

Annex 3

Landscape Drawings and Greenery Area Calculation

Section 6 – Landscape Proposal

Brief Description

The proposed development is a 12-storey building at 43 Berwick Street of Sham Shui Po, comprising various social welfare facilities as well as the redevelopment of HKSKH St. Thomas Church. The landscape proposal encompasses podium gardens, roof greening to provide private open spaces and greenery for the enjoyment of the building users.

Landscape Design

The Landscape plan, (Drawing ADL3/TFS/LP01) presents the landscape proposal from the top view. On the 2/F, a podium garden is proposed for events holding, outdoor seating, fitness and jogging. Planting areas with bench seating enclose the fitness area to create space for users to do stretching exercises. Two stepped planter is provided to enrich the planter layer through level difference. The more linear outdoor space at the Northeast is proposed to be a mini jogging space, with shrubs planters designed all along as greenery buffer against the Berwick Street streetscape. The quality of landscape area is visualized on Landscape Section A-B (Drawings ADL3/TFS/SEC01 and ADL3/TFS/SEC02).

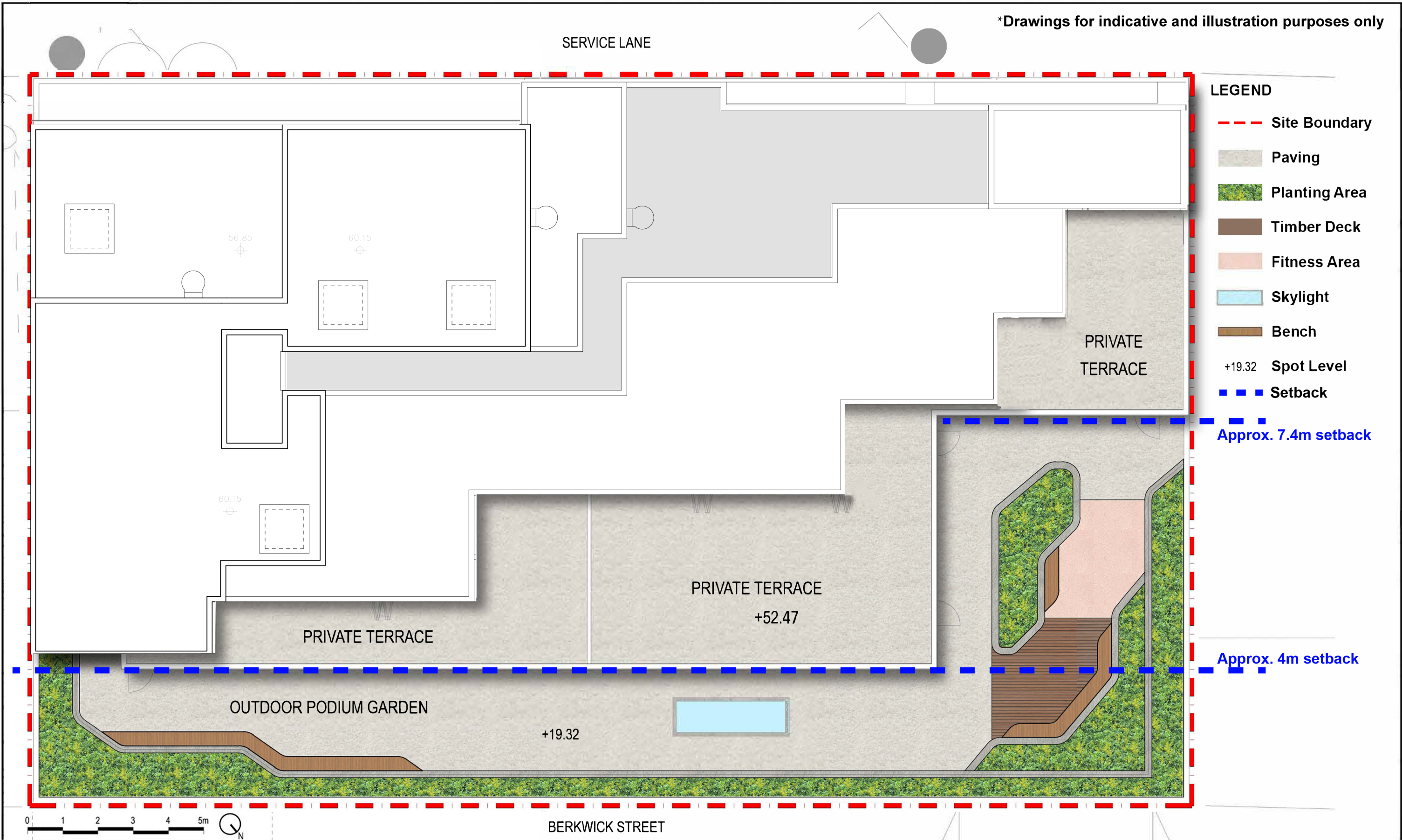
In terms of proposed materials, this proposal adopts the “no-frills” principle. More economical construction materials are suggested. For instance, timber deck and bench can be built with Wood Plastic Composite/ Artificial timber. EPDM is proposed as the paving material at the fitness area. As for general hard paving, homogenous tiles, artificial granite tiles could be used. Regarding soft landscape materials, common ornamental shrubs species like *Ixora chinensis*, *Ligustrum sinense*, *Schefflera arboricola* are possible plant species to provide greenery backdrop. The exact materials can be further developed in detail design stage.

Greenery Area Provision

According to the BD PNAP-152, since the site area is less than 1000m², there is no minimum Site Coverage of Greenery requirement. Green area list for reference below.

- 2/F Greenery Area: 47.3 sq.m
- Total Greenery Area: 47.3 sq.m

*Drawings for indicative and illustration purposes only



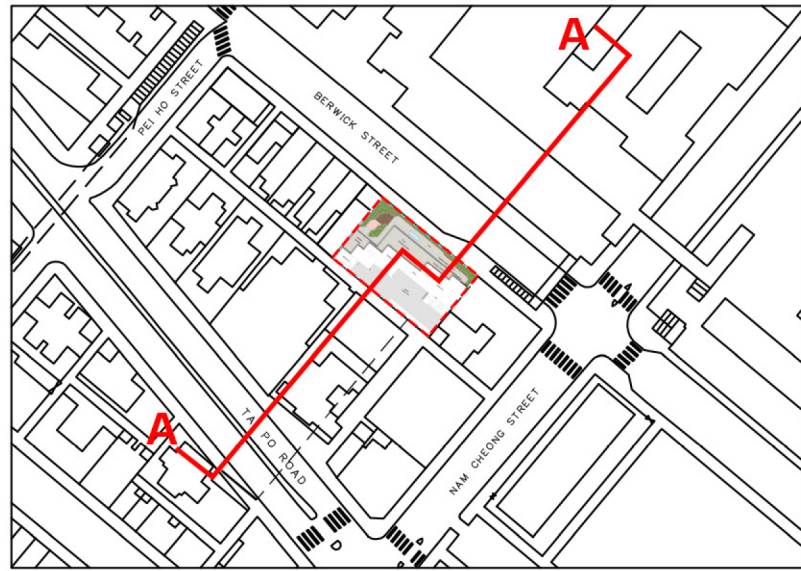
- LEGEND**
- - - Site Boundary
 - Paving
 - Planting Area
 - Timber Deck
 - Fitness Area
 - Skylight
 - Bench
 - +19.32 Spot Level
 - - - Setback
 - - - Approx. 7.4m setback
 - - - Approx. 4m setback

I:\HALG\DWG-GA\IA\TEMPLATE.dwg, Layout1, 04/Aug/2021 12:17:36 PM, Ellis, 1:1

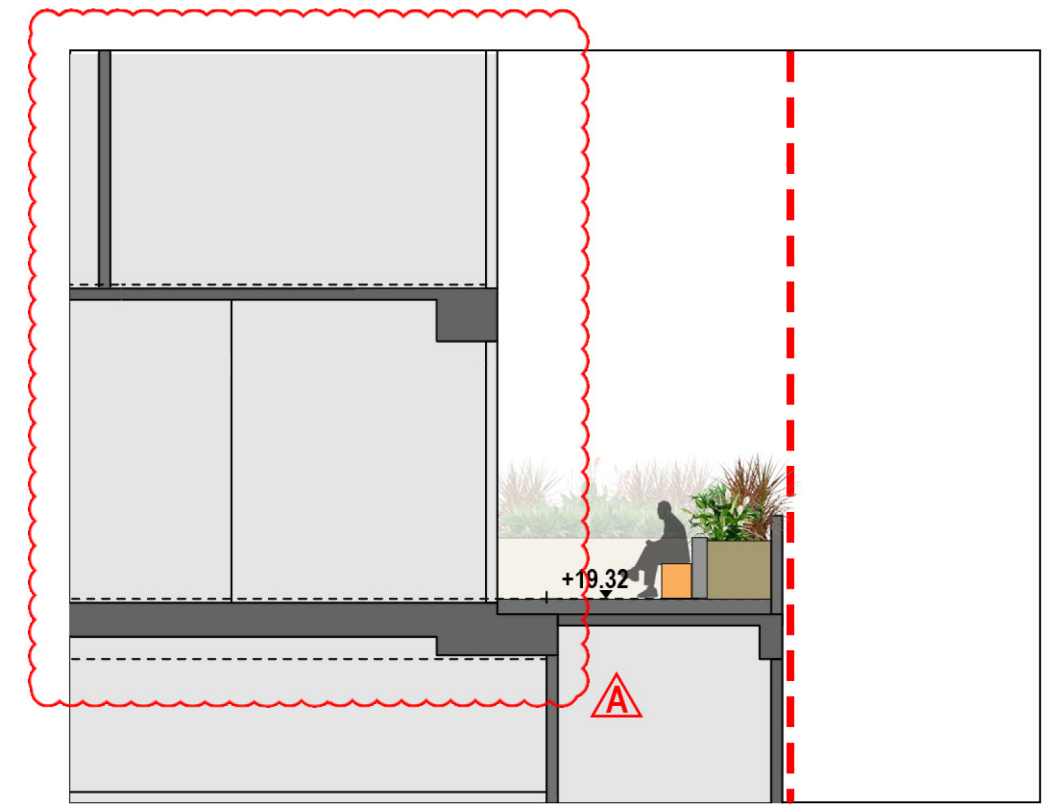
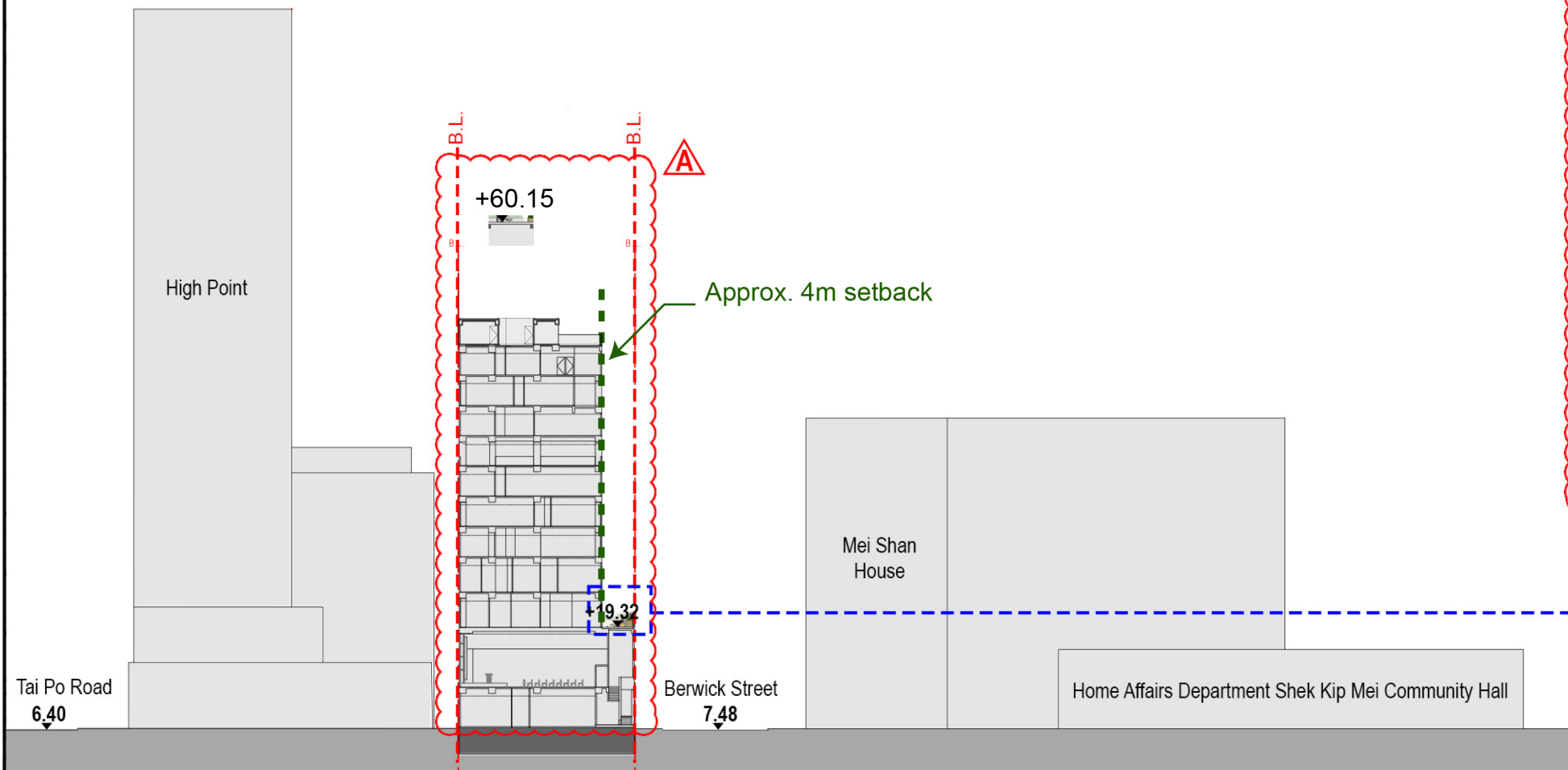
						Job Title Architectural and Associated Consultancy Services for Technical Feasibility Study for The Proposed Redevelopment of Hong Kong Sheng Kung Hui St. Thomas' Church at 43 Berwick Street, Sham Shui Po, Kowloon, N.K.I.L. No. 3762 & 3635RP			Drawing No. ADL3/TFS/LP01								
						Drawing Title LANDSCAPE PLAN			Scale 1:100								
A	19 NOV2024	Layout update per Archi Scheme 27	OO	JN	TTH												
	14 MAR 2024	TFS Landscape drawings	OO	JN	TT H												
Amendment No.	Date	Description	Drawn by	Checked by	Approved by	Drawn by	OO	Checked by	JN	Approved by	TTH	Date	MAR 2024	Job. No.	ADL3	Planning, Urban Design, Landscape, Golf & Environmental Consultants Urbis Limited, 11/F Sku On Centre, 188 Lockhart Road, Wan Chai, Hong Kong. Tel : 2802 3333 Fax : 2802 8662	



*Drawings for indicative and illustration purposes only



Key Plan



Section Blow Up (2F Level)
SCALE 1:100

Section A-A

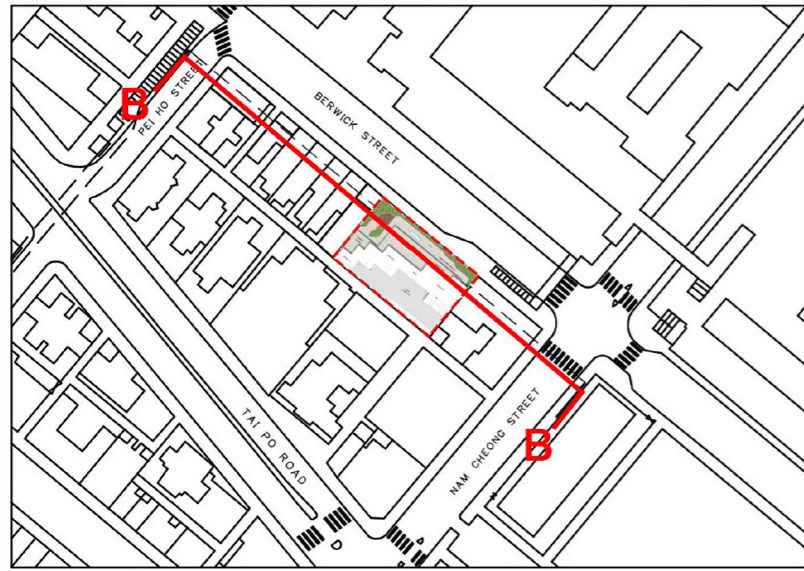
Amendment No.	Date	Description	Drawn by	Checked by	Approved by
A	19 NOV 2024	Layout update per Archi Scheme 27	OO	JN	TTH
-	14 MAR 2024	TFS Landscape drawings	OO	JN	TTH

Job Title Architectural and Associated Consultancy Services for Technical Feasibility Study for The Proposed Redevelopment of Hong Kong Sheng Kung Hui St. Thomas' Church at 43 Berwick Street, Sham Shui Po, Kowloon, N.K.I.L. No. 3762 & 3635RP					
Drawing Title LANDSCAPE SECTION A					
Drawn by	OO	Checked by	JN	Approved by	TTH
Date	MAR 2024				

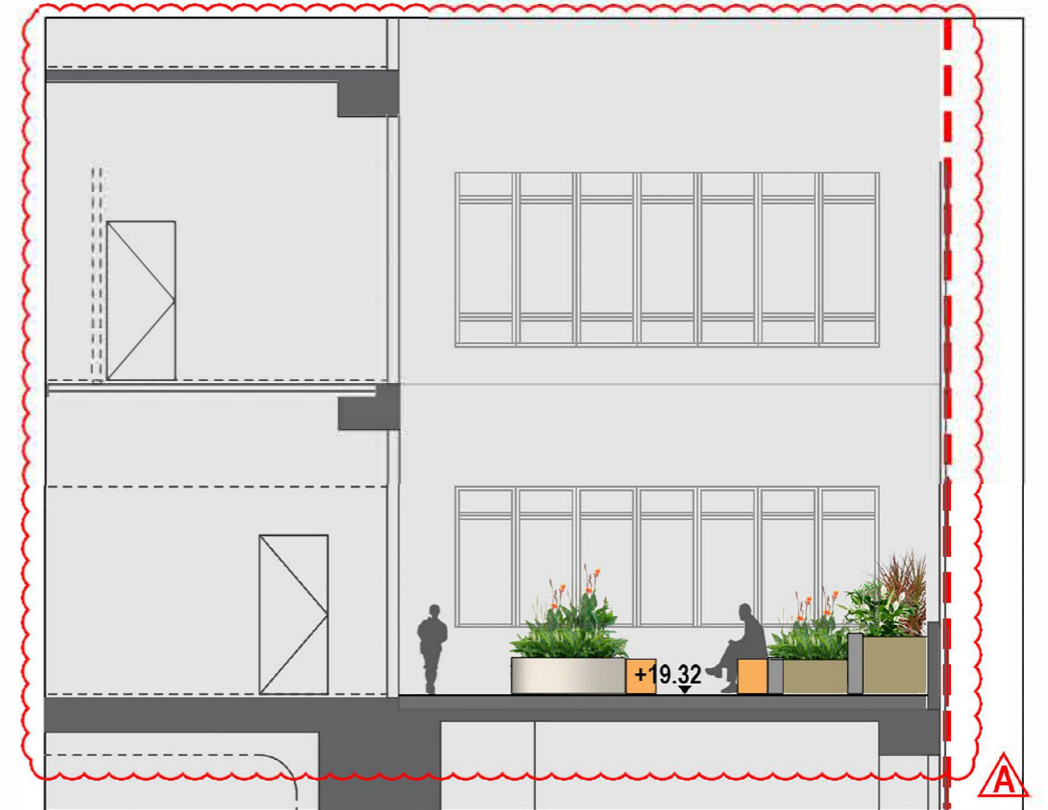
Drawing No.	ADL3/TFS/SEC01
Scale	as shown
Job. No.	ADL3

Urbis Limited
 Planning, Urban Design, Landscape, Golf & Environmental Consultants
 Urbis Limited, 11/F Sku On Centre, 188 Lockhart Road, Wan Chai, Hong Kong. Tel : 2802 3333 Fax : 2802 8662

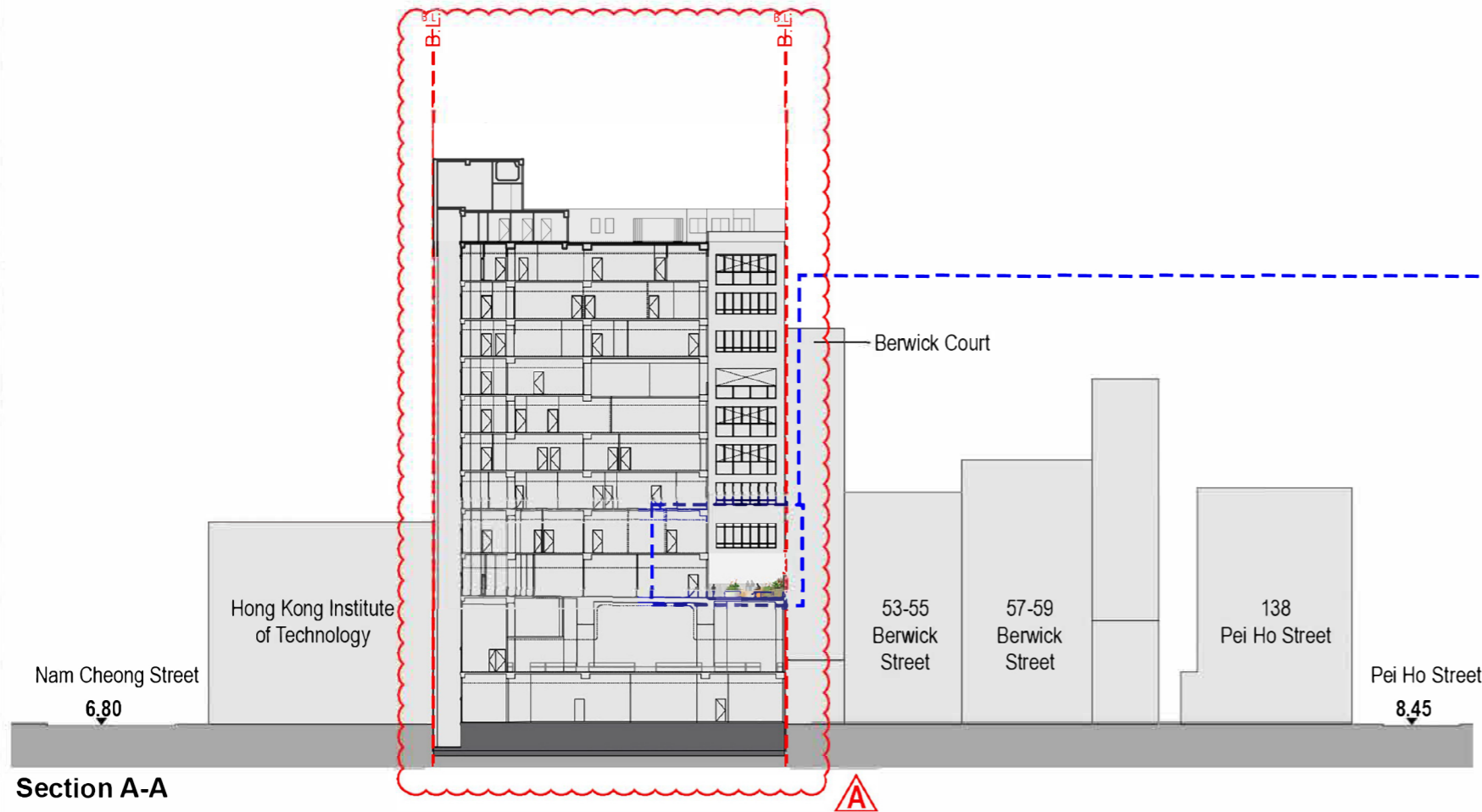
I:\HALO\DWG-GA\IA\TEMPLATE.dwg, Layout1, 04/Aug/2021 12:17:36 PM, Ellis, 1:1



Key Plan



Section Blow Up (2F Level)
SCALE 1:100



Section A-A

I:\HA\6\DWG\GA\TEMPLATE.dwg, Layout1, 04/Aug/2021 12:17:36 PM, Ellis, 1:1

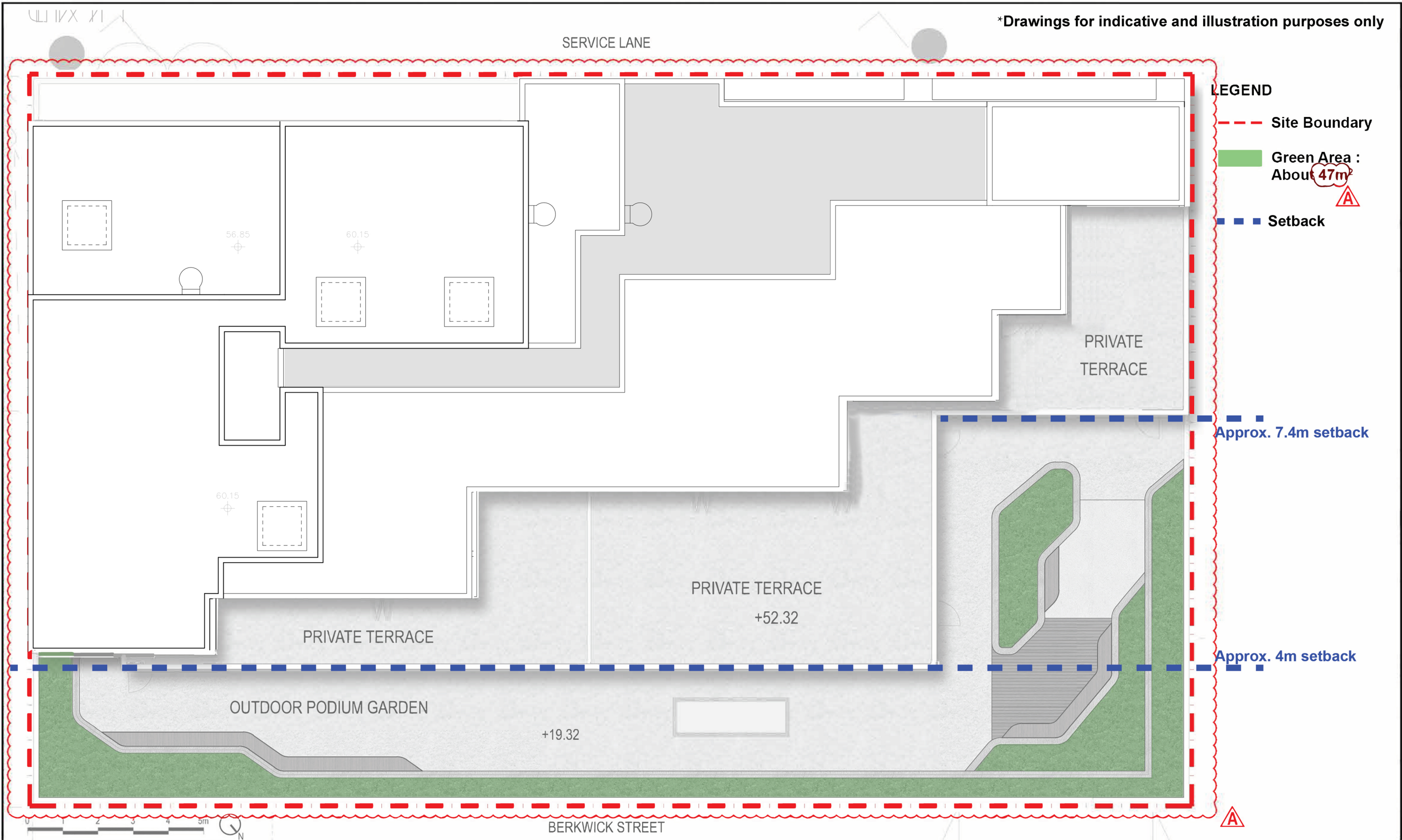
Amendment No.	Date	Description	Drawn by	Checked by	Approved by
A	19 NOV2024	Layout update per Archi Scheme 27	OO	JN	TTH
-	14 MAR 2024	TFS Landscape drawings	OO	JN	TTH

Job Title Architectural and Associated Consultancy Services for Technical Feasibility Study for The Proposed Redevelopment of Hong Kong Sheng Kung Hui St. Thomas' Church at 43 Berwick Street, Sham Shui Po, Kowloon, N.K.I.L. No. 3762 & 3635RP					
Drawing Title LANDSCAPE SECTION B					
Drawn by	OO	Checked by	JN	Approved by	TTH
Date	MAR 2024				

Drawing No.	ADL3/TFS/SEC02
Scale	AS SHOWN
Job. No.	ADL3


Urbis Limited
 Planning, Urban Design, Landscape, Golf & Environmental Consultants
 Urbis Limited, 11/F Sky On Centre, 188 Lockhart Road, Wan Chai, Hong Kong. Tel : 2802 3333 Fax : 2802 8662

*Drawings for indicative and illustration purposes only



- LEGEND**
- Site Boundary
 - Green Area : About 47m²
 - Setback

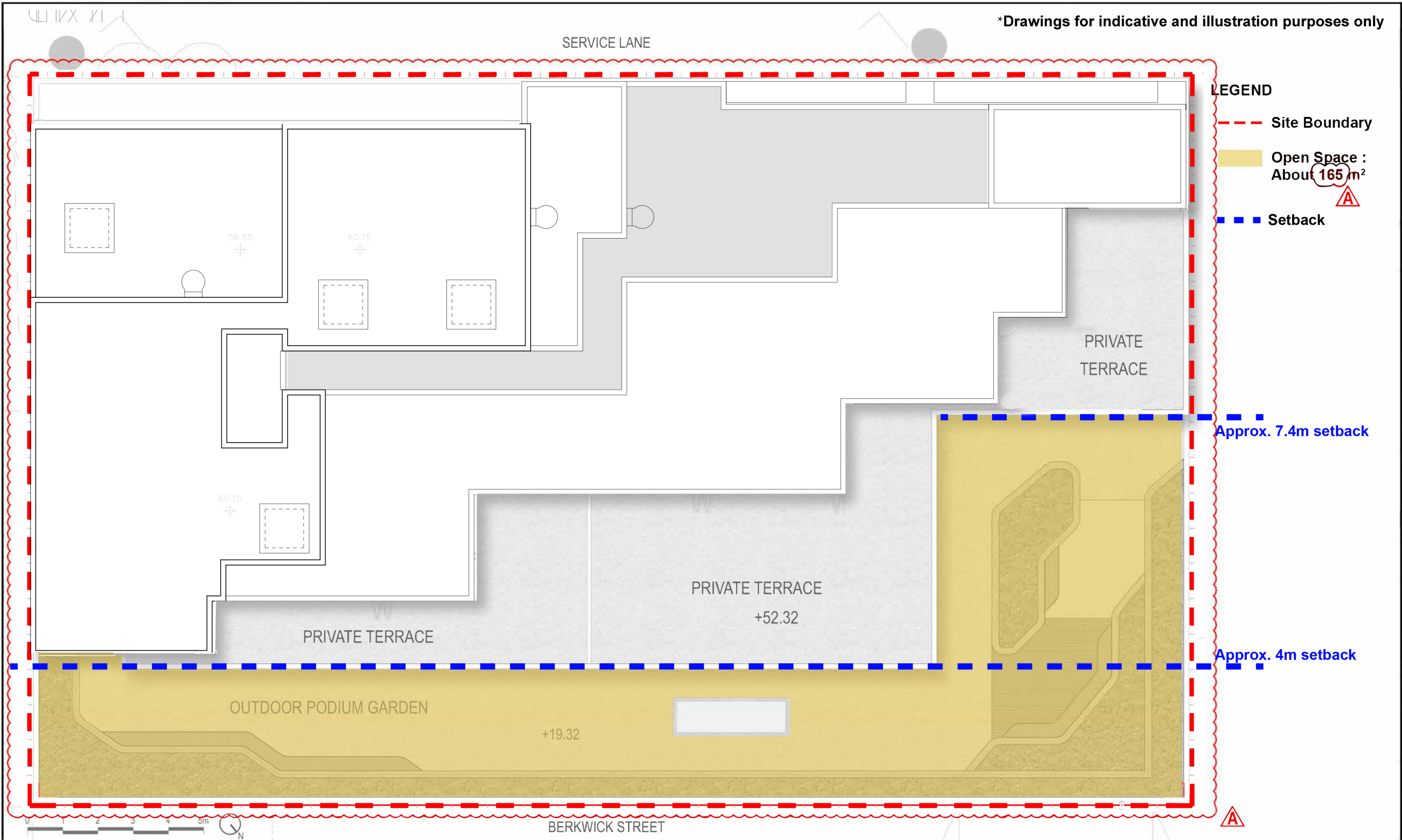
Approx. 7.4m setback

Approx. 4m setback

I:\HA\G\DWG-GA\GIA\TEMPLATE.dwg, Layout1, 04/Aug/2021 12:17:36 PM, Ellis, 1:1

						Job Title Architectural and Associated Consultancy Services for Technical Feasibility Study for The Proposed Redevelopment of Hong Kong Sheng Kung Hui St. Thomas' Church at 43 Berwick Street, Sham Shui Po, Kowloon, N.K.I.L. No. 3762 & 3635RP			Drawing No. ADL3/TFS/GA01		 Urbis Limited Planning, Urban Design, Landscape, Golf & Environmental Consultants Urbis Limited, 11/F Sky On Centre, 188 Lockhart Road, Wan Chai, Hong Kong. Tel : 2802 3333 Fax : 2802 8662	
						Drawing Title GREEN AREA PLAN			Scale 1:100			
A	19 NOV2024	Layout update per Archi Scheme 27	OO	JN	TTH	OO	JN	TTH	Date	MAR 2024		
Amendment No.		Date	Description	Drawn by	Checked by	Approved by	Drawn by	Checked by	Approved by	Date	Job. No.	ADL3

*Drawings for indicative and illustration purposes only



- LEGEND**
- - - Site Boundary
 - Open Space : About 165 m²
 - - - Setback

Approx. 7.4m setback

Approx. 4m setback

I:\HALG\DWG-GA\IA\TEMPLATE.dwg, Layout1, 04/Aug/2021 12:17:36 PM, Ellis, 1:1

						Job Title Architectural and Associated Consultancy Services for Technical Feasibility Study for The Proposed Redevelopment of Hong Kong Sheng Kung Hui St. Thomas' Church at 43 Berwick Street, Sham Shui Po, Kowloon, N.K.I.L. No. 3762 & 3635RP			Drawing No. ADL3/TFS/OS01		 Urbis Limited Planning, Urban Design, Landscape, Golf & Environmental Consultants Urbis Limited, 11/F Sky On Centre, 188 Lockhart Road, Wan Chai, Hong Kong. Tel : 2802 3333 Fax : 2802 8662				
						Drawing Title OPEN SPACE PROVISION			Scale 1:100						
A	19 NOV2024	Layout update per Archi Scheme 27	OO	JN	TTH										
	14 MAR 2024	TFS Landscape drawings	OO	JN	TTH										
Amendment No.	Date	Description	Drawn by	Checked by	Approved by	Drawn by	OO	Checked by	JN	Approved by	TTH	Date	MAR 2024	Job. No.	ADL3