

Project 項目名稱:

Proposed Temporary Open Storage of Construction Machinery and Construction Materials and Associated Filling of Land for a Period of 3 Years at Lots 333 RP (Part) & 334 (Part) in D.D.87, Ta Kwu Ling, N.T.

Drawing Title 圖目:

Swept Path Analysis for MGV/HGV Leaving the Application Site

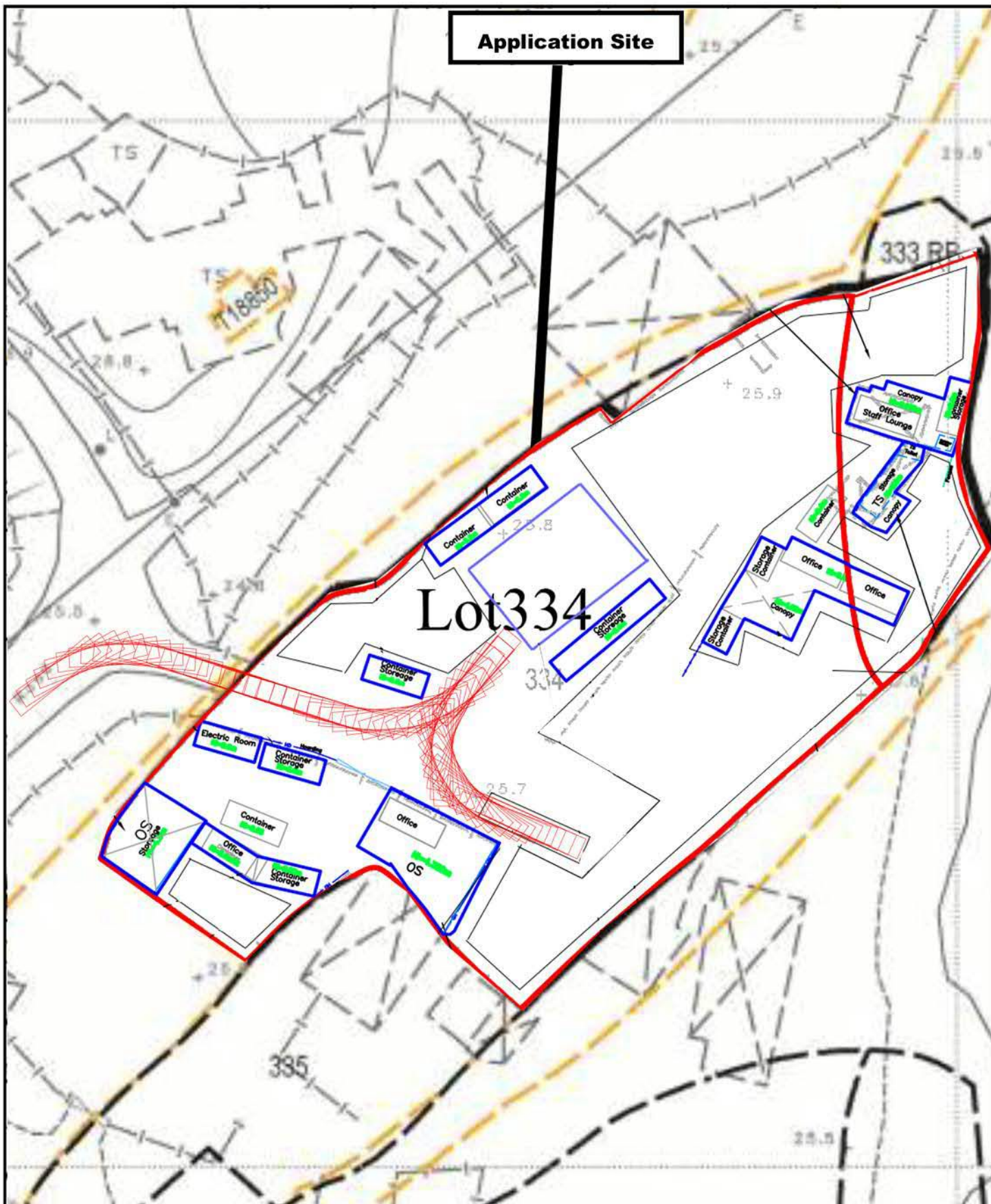
Drawing No. 圖號:

Figure 7

Remarks 備註:

Scale 比例:

1:500



<p>Project 項目名稱:</p> <p>Proposed Temporary Open Storage of Construction Machinery and Construction Materials and Associated Filling of Land for a Period of 3 Years at Lots 333 RP (Part) & 334 (Part) in D.D.87, Ta Kwu Ling, N.T.</p>	<p>Drawing Title 圖目:</p> <p>Swept Path Analysis for MGV/HGV Entering the Application Site</p>	<p>Remarks 備註:</p>
	<p>Drawing No. 圖號:</p> <p>Figure 8</p>	<p>Scale 比例:</p> <p>1:500</p>