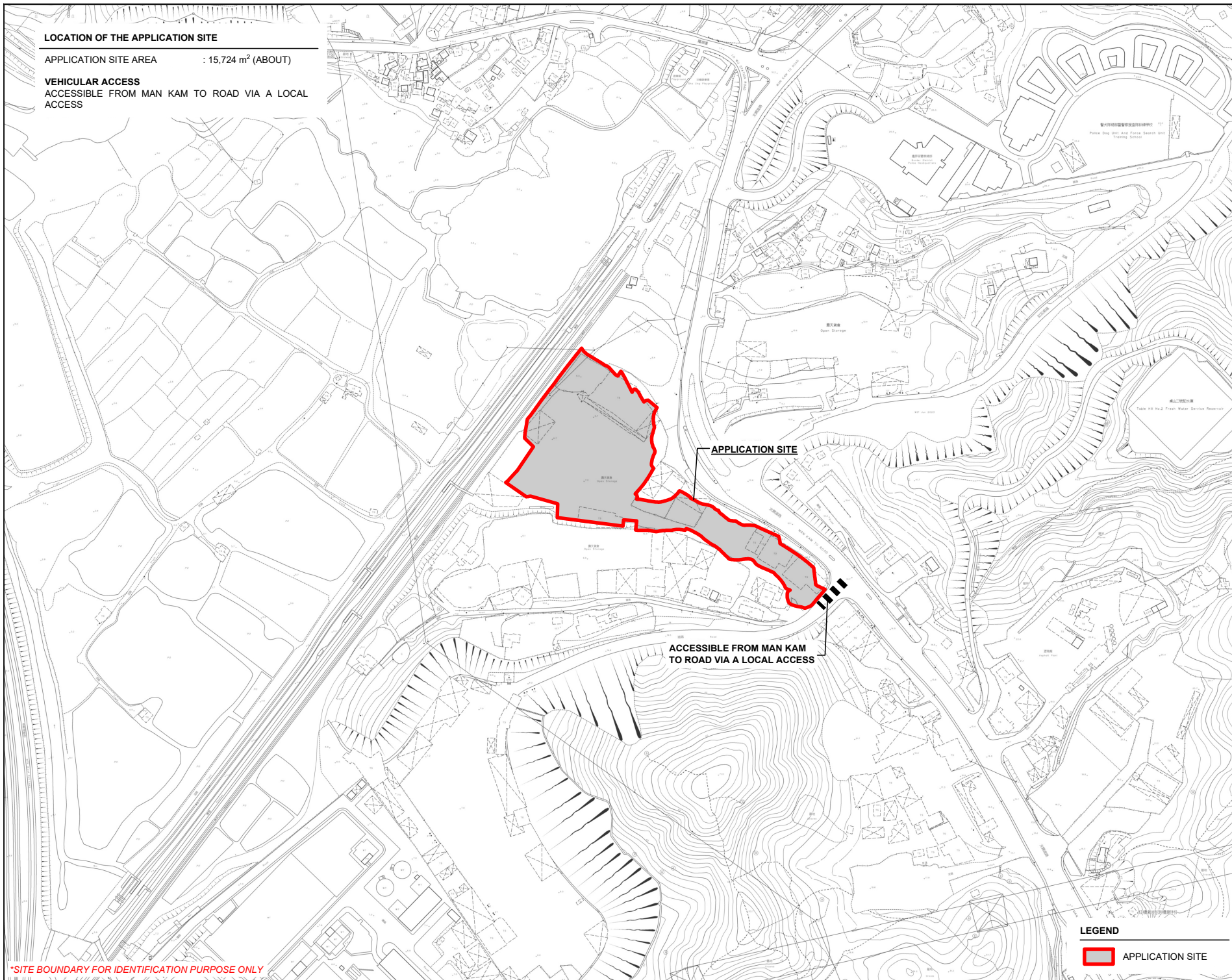
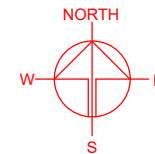


LOCATION OF THE APPLICATION SITE

APPLICATION SITE AREA : 15,724 m² (ABOUT)

VEHICULAR ACCESS

ACCESSIBLE FROM MAN KAM TO ROAD VIA A LOCAL ACCESS



APPLICATION SITE

ACCESSIBLE FROM MAN KAM
TO ROAD VIA A LOCAL ACCESS

LEGEND

 APPLICATION SITE

PLANNING CONSULTANT



PROJECT

PROPOSED WAREHOUSE (EXCLUDING DANGEROUS GOODS GODOWN) WITH ANCILLARY FACILITIES AND ASSOCIATED FILLING OF LAND FOR A PERIOD OF 3 YEARS

SITE LOCATION

VARIOUS LOTS IN D.D. 89 AND ADJOINING GOVERNMENT LAND, FU TEI AU, SHEUNG SHUI, NEW TERRITORIES

SCALE
1 : 4000 @ A4

DRAWN BY
MN 27.10.2025

REVISED BY
DATE

APPROVED BY
DATE

DWG. TITLE
LOCATION PLAN

DWG NO.
PLAN 1

VER.
001

*SITE BOUNDARY FOR IDENTIFICATION PURPOSE ONLY