

DEVELOPMENT PARAMETERS

APPLICATION SITE : 6,214 SQ.M. (ABOUT)
COVERED AREA : 919 SQ.M. (ABOUT)
UNCOVERED AREA : 5,295 SQ.M. (ABOUT)


PARKING AND LOADING/UNLOADING PROVISION

PARKING SPACE (PC) : 1 NOS. (5 M(L) X 3.5 M(W))
PARKING SPACE (HGV) : 1 NOS. (11 M(L) X 3.5 M(W))
L/UL AREA : 1 NOS. (16 M(L) X 3 M(W))


LEGEND


 Application Site Boundary


 Proposed Fencing

 Proposed Structure


- A: Consolidation Area for Freight and Goods (GFA: about 299 sq.m. / 1 Storey)
B: Vehicle Repair Workshop (GFA: about 273 sq.m. / 1 Storey)
C: Ancillary Site Office/General Storage Uses (GFA: about 324 sq.m. / 2 Storey)
D: Ancillary Site Office/General Storage Uses (GFA: about 324 sq.m. / 2 Storey)
E: Guard Kiosk (GFA: about 15 sq.m. / 1 Storey)
F: Meter Room (GFA: about 8 sq.m. / 1 Storey)


 Open Storage Area: Container Stacking (About 1,440 sq.m.)

 No-Built Zone (About 976 sq.m.)

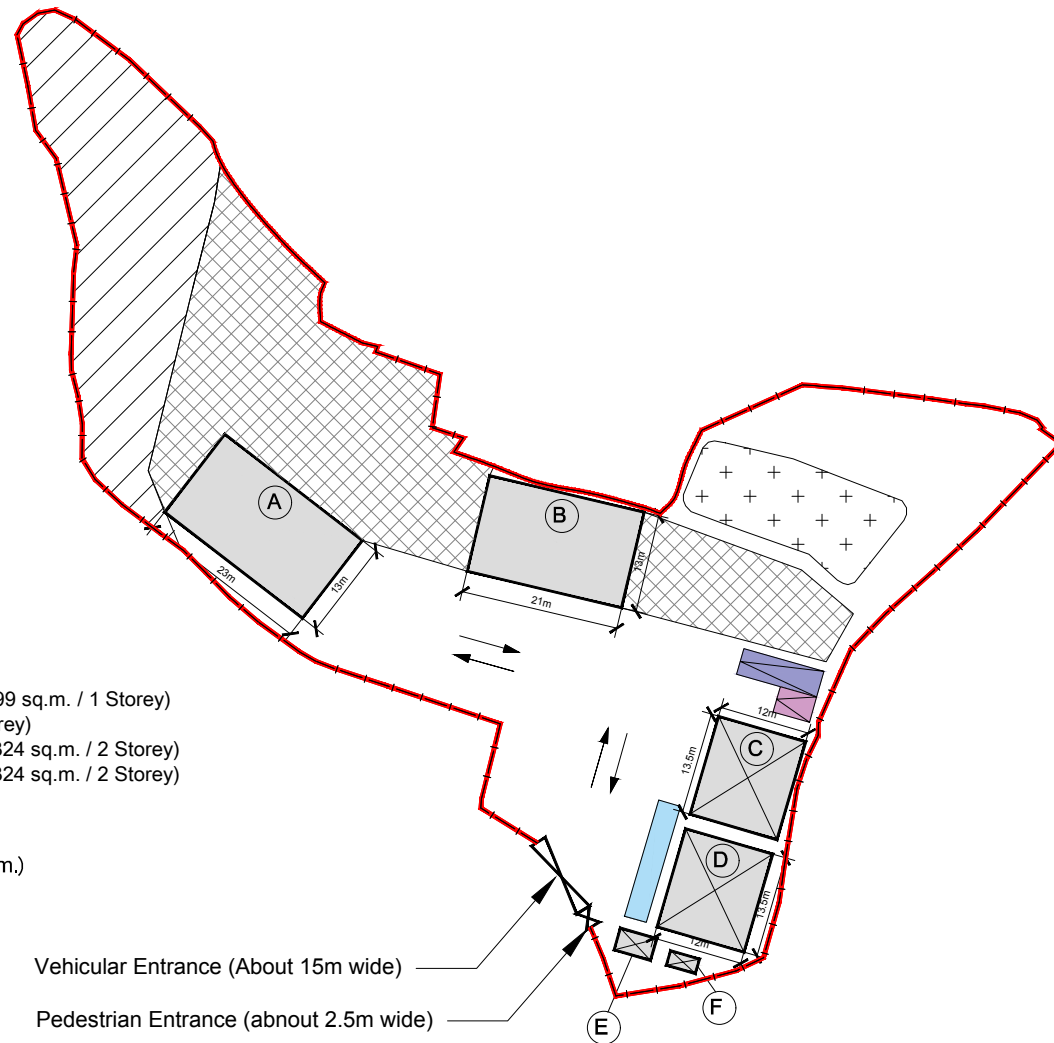
 Proposed Pond (About 300 sq.m.)

 Loading/Unloading Area

 Parking Space (HGV)

 Parking Space (PC)

(For identification only)



Vehicular Entrance (About 15m wide)

Pedestrian Entrance (about 2.5m wide)

INDICATIVE LAYOUT PLAN

SCALE 1:1000

Figure 3