

PV in



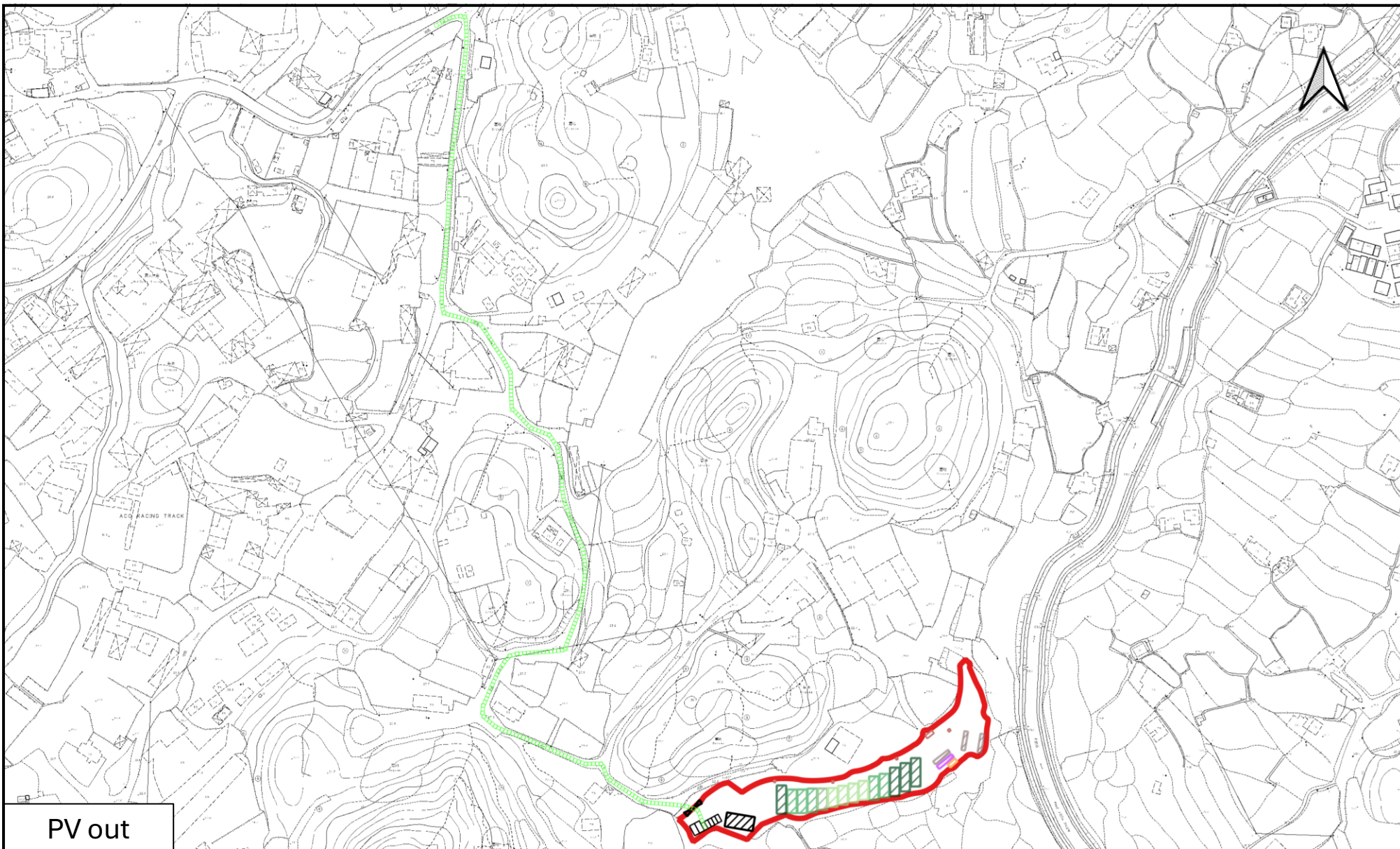
**LCH Planning and Development
Consultants Limited**

Annex 2 : Swept Path Analysis

(For reference only. Not to scale.)

Section 16 Application for Proposed Temporary Mountain Search and Rescue Training Centre and Ancillary Facilities and Associated Filling of Land for a Period of 3 Years at Lot Nos. 611 (Part) and 682 (Part) in D.D. 84, Hung Lung Hang, New Territories

(Source: HK GEODATA STORE & Town Planning Board, HKSAR Government)



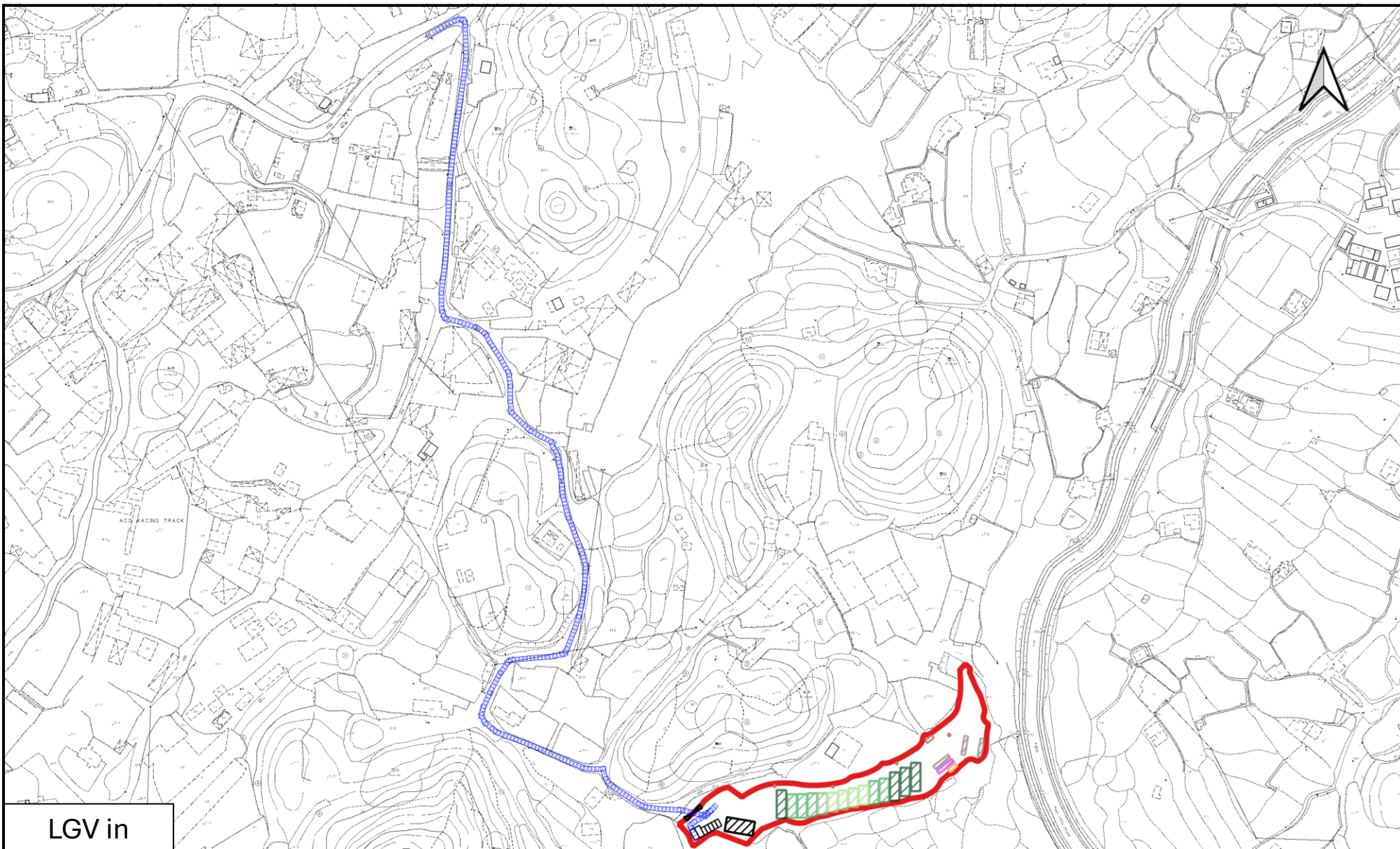
**LCH Planning and Development
Consultants Limited**

Annex 2 : Swept Path Analysis

(For reference only. Not to scale.)

Section 16 Application for Proposed Temporary Mountain Search and Rescue Training Centre and Ancillary Facilities and Associated Filling of Land for a Period of 3 Years at Lot Nos. 611 (Part) and 682 (Part) in D.D. 84, Hung Lung Hang, New Territories

(Source: HK GEODATA STORE & Town Planning Board, HKSAR Government)



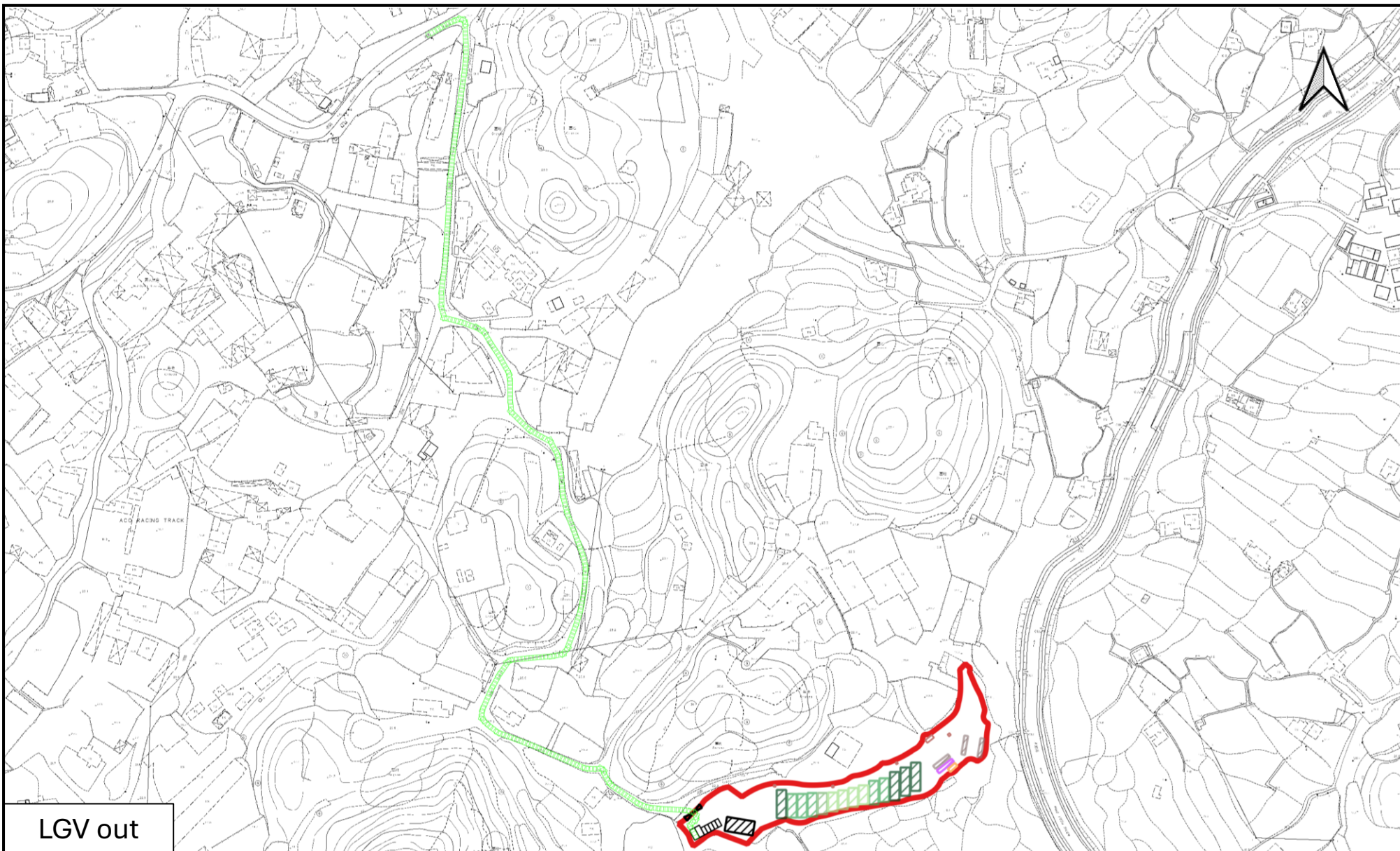
**LCH Planning and Development
Consultants Limited**

Annex 2 : Swept Path Analysis

(For reference only. Not to scale.)

Section 16 Application for Proposed Temporary Mountain Search and Rescue Training Centre and Ancillary Facilities and Associated Filling of Land for a Period of 3 Years at Lot Nos. 611 (Part) and 682 (Part) in D.D. 84, Hung Lung Hang, New Territories

(Source: HK GEODATA STORE & Town Planning Board, HKSAR Government)



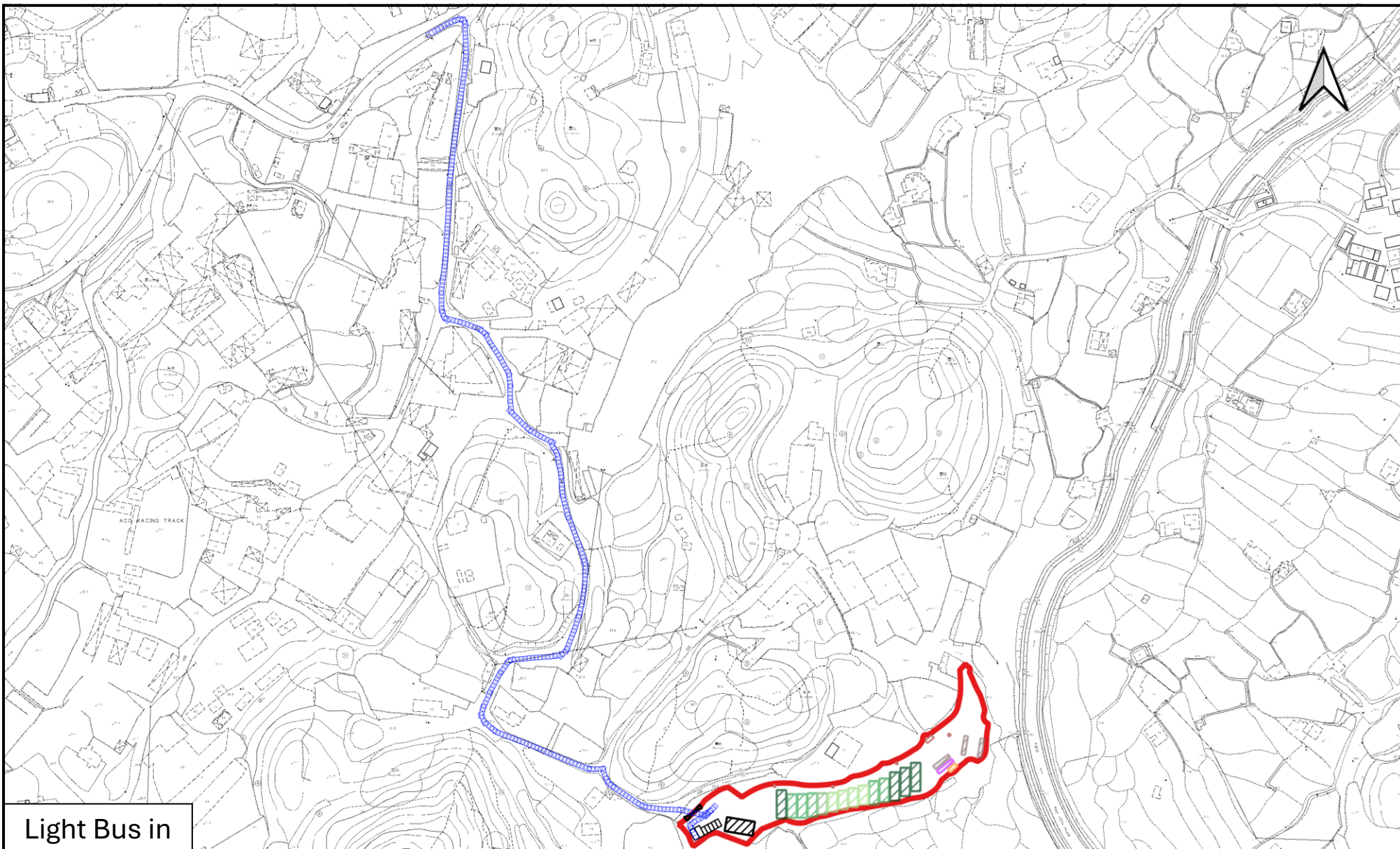
**LCH Planning and Development
Consultants Limited**

Annex 2 : Swept Path Analysis

(For reference only. Not to scale.)

Section 16 Application for Proposed Temporary Mountain Search and Rescue Training Centre and Ancillary Facilities and Associated Filling of Land for a Period of 3 Years at Lot Nos. 611 (Part) and 682 (Part) in D.D. 84, Hung Lung Hang, New Territories

(Source: HK GEODATA STORE & Town Planning Board, HKSAR Government)



Light Bus in



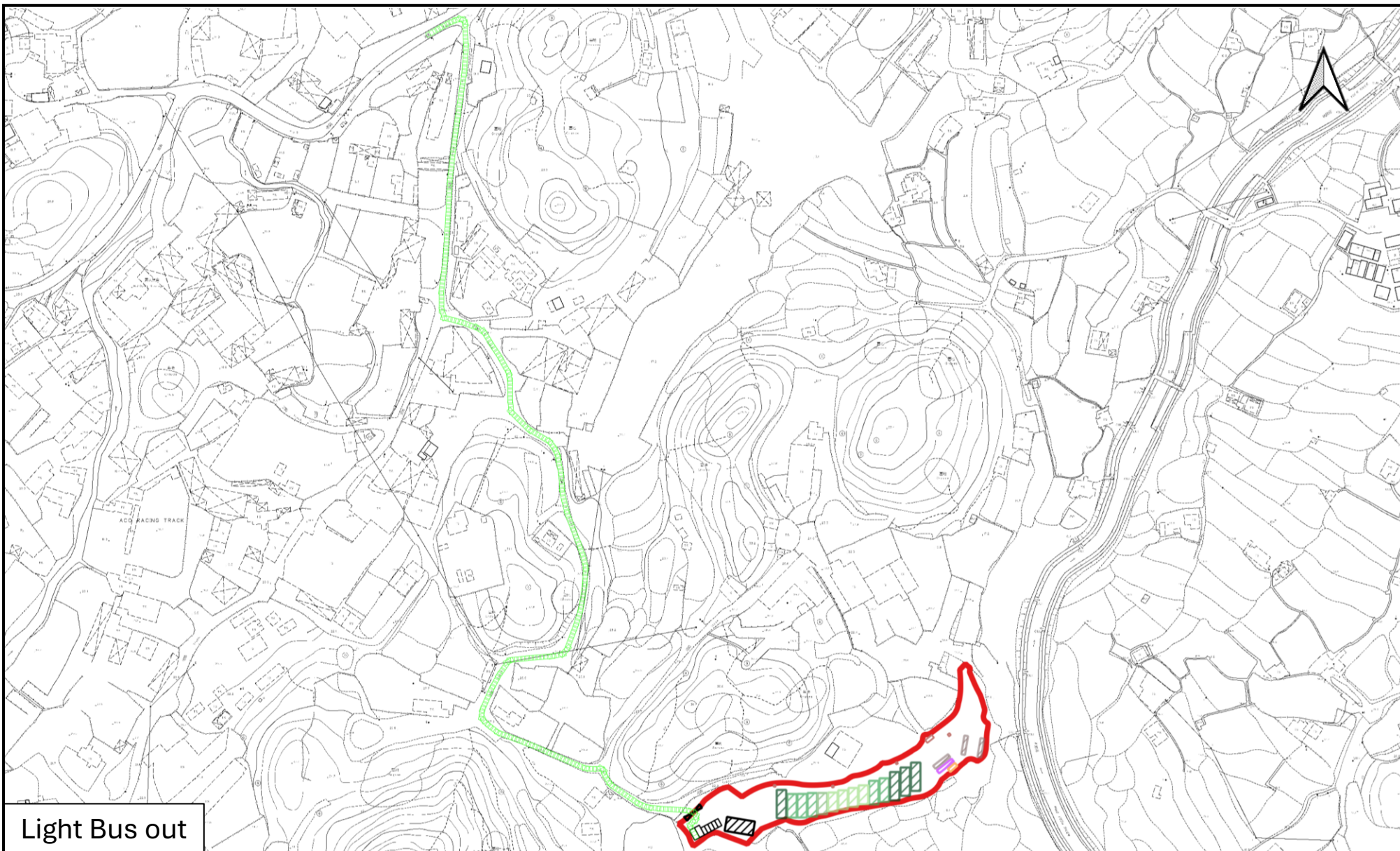
**LCH Planning and Development
Consultants Limited**

Annex 2 : Swept Path Analysis

(For reference only. Not to scale.)

Section 16 Application for Proposed Temporary Mountain Search and Rescue Training Centre and Ancillary Facilities and Associated Filling of Land for a Period of 3 Years at Lot Nos. 611 (Part) and 682 (Part) in D.D. 84, Hung Lung Hang, New Territories

(Source: HK GEODATA STORE & Town Planning Board, HKSAR Government)



**LCH Planning and Development
Consultants Limited**

Annex 2 : Swept Path Analysis

(For reference only. Not to scale.)

Section 16 Application for Proposed Temporary Mountain Search and Rescue Training Centre and Ancillary Facilities and Associated Filling of Land for a Period of 3 Years at Lot Nos. 611 (Part) and 682 (Part) in D.D. 84, Hung Lung Hang, New Territories

(Source: HK GEODATA STORE & Town Planning Board, HKSAR Government)