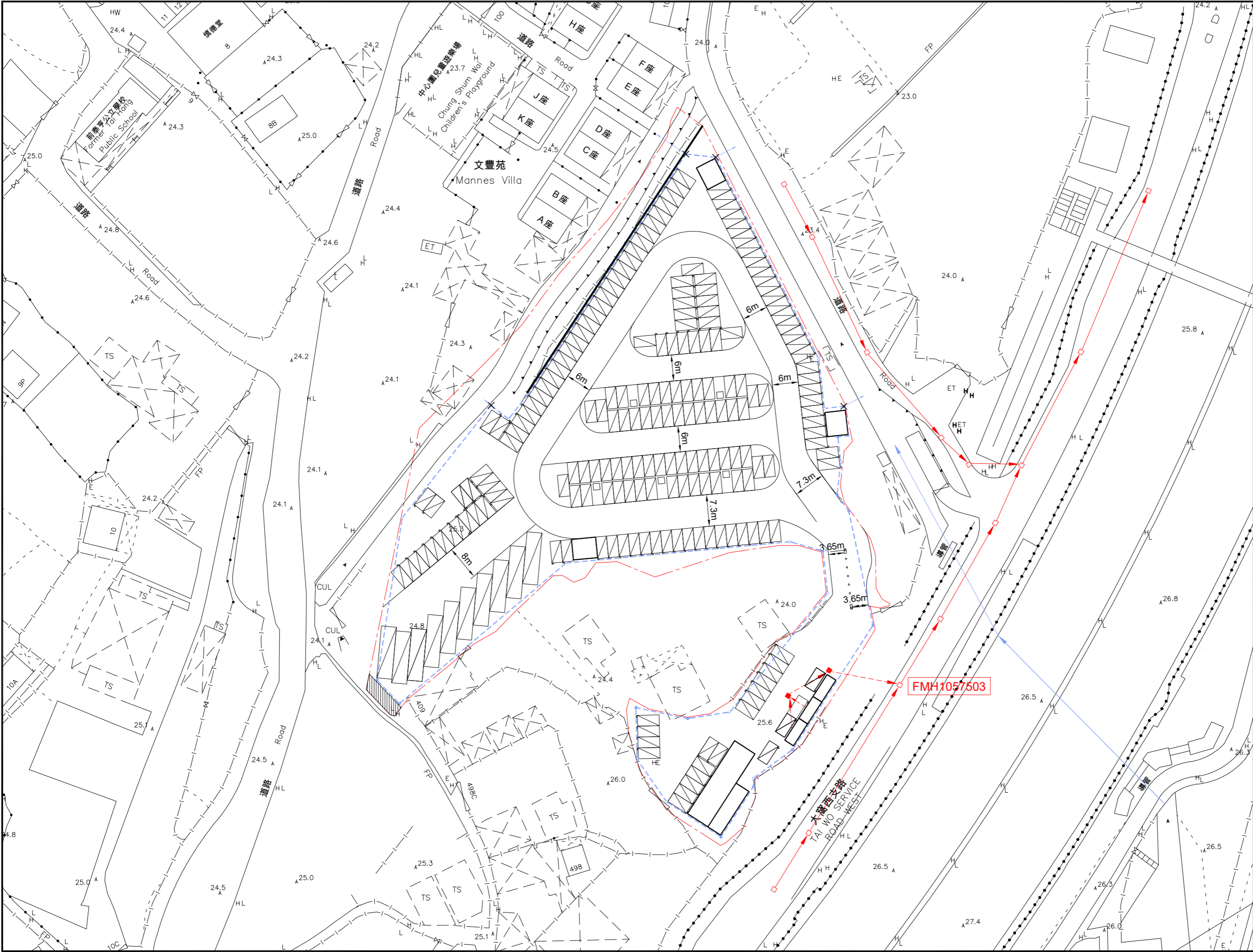


Appendix 5

Drainage Proposal and Photos of Existing Drainage Channels



B.D. REFERENCE
-

F.S.D. REFERENCE
-

W.W.O. REFERENCE
-

CAD FILE NAME
202500913 - MLP.DWG

NOTE:

圖字樣號

消防處圖號

水務署圖號

檔案圖號

註釋

DATE 日期	NO. 修訂號	REVISIONS 修訂內容	BY 設計人

LEGEND:

APPLICATION SITE

EXISTING FOUL WATER MANHOLE

EXISTING FOUL WATER PIPE

EXISTING STORM WATER MANHOLE

EXISTING STORM WATER PIPE

PROPOSED FOUL WATER MANHOLE

EXISTING FOUL WATER PIPE (UNDERGROUND)

PROPOSED STORM WATER MANHOLE

PROPOSED SAND TRAP

PROPOSED U-CHANNEL

PROPOSED STORM WATER DISCHARGE (DIRECT TO EXISTING CULVERT THROUGH PROPOSED SAND TRAP)

LT DEVELOPMENT CONSULTANTS LTD.

良德發展顧問有限公司

ARCHITECTS

PROJECT MANAGERS

INTERIOR DESIGNERS

UNIT C, 15/F THOMSON COMMERCIAL BUILDING,
8 THOMSON ROAD, WAN CHAI, HONG KONG
TEL (852) 28800395 FAX (852) 25647321

PROJECT

PROPOSED TEMPORARY OPEN VEHICLE PARK & PUBLIC UTILITY PARK (SOLAR ENERGY SYSTEM) AT VARIOUS LOTS IN DD7 LOT 237

項目名稱

DRAWING TITLE

PRELIMINARY DRAINAGE PROPOSAL (FOR INDICATIVE PURPOSE ONLY)

標題

SCALE 1:800	比例	DATE 08 / 05 / 2024	日期
DRAWN BY QC	圖作人	CHECKED BY FL	檢查人
JOB NO. 24-025	工程項目	DRAWING NO. D-1	圖號

**Figure 1: Existing Drainage Facilities
from the view towards north**



**Figure 2: Existing Drainage Facilities
from the view towards south**

