

S.D. REFERENCE		圖字號碼	
F&S.D. REFERENCE		消防處圖號	
W.W.O. REFERENCE		水務署圖號	
CAD FILE NAME		檔案圖號	
20251107 - MLP.DWG			
NOTE:		說明	

DATE	NO.	REVISION	BY
日期	編號	修改內容	設計人

LEGEND:

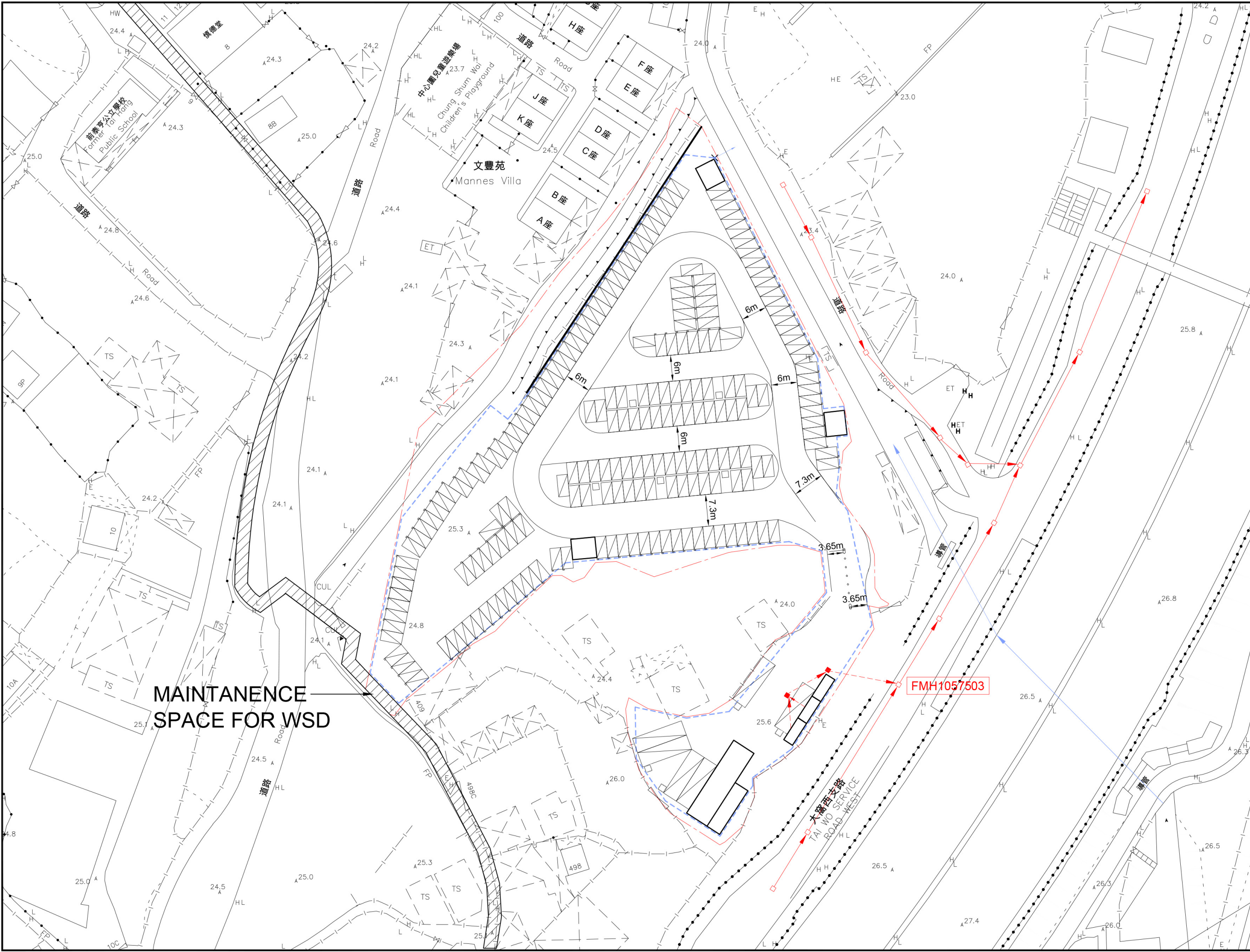
- PARKING SPACE SUPPORTED BY TYPE 1 CHARGER
- PARKING SPACE SUPPORTED BY TYPE 2 CHARGER

LT DEVELOPMENT CONSULTANTS LTD.
良德發展顧問有限公司
ARCHITECTS
PROJECT MANAGERS
INTERIOR DESIGNERS
UNIT C, 15/F THOMSON COMMERCIAL BUILDING,
8 THOMSON ROAD, WAI CHAI, HONG KONG
TEL (852) 28800396 FAX (852) 25647323

PROJECT
PROPOSED TEMPORARY
OPEN VEHICLE PARK &
PUBLIC UTILITY INSTALLATION
(SOLAR ENERGY SYSTEM)
AT VARIOUS LOTS IN DD7 LOT 237

DRAWING TITLE
MASTER LAYOUT PLAN

SCALE	比例	DATE	日期
1:800		08 / 05 / 2024	
DRAWN BY	圖件人	CHECKED BY	檢查人
QC		FL	
JOB NO.	工程編號	DRAWING NO.	圖號
24-025		D-1	△



MAINTENANCE
SPACE FOR WSD

FMH1057503

B.D. REFERENCE		圖字號	
F.S.D. REFERENCE		消防處圖號	
W.W.O. REFERENCE		水務署圖號	
CAD FILE NAME		檔案圖號	
20251104 - MLP.DWG			
NOTE:		註釋	

DATE	NO.	REVISIONS	BY
日期	修訂號	修訂內容	修訂人

LEGEND:

- APPLICATION SITE
- EXISTING FOUL WATER MANHOLE
- EXISTING FOUL WATER PIPE
- EXISTING STORM WATER MANHOLE
- EXISTING STORM WATER PIPE
- PROPOSED FOUL WATER MANHOLE
- PROPOSED FOUL WATER PIPE (UNDERGROUND)
- PROPOSED SAND TRAP
- PROPOSED U-CHANNEL
- PROPOSED STORM WATER DISCHARGE (DIRECT TO EXISTING CULVERT THROUGH PROPOSED SAND TRAP)

LT DEVELOPMENT CONSULTANTS LTD.
良德建築顧問有限公司
ARCHITECTS
PROJECT MANAGERS
INTERIOR DESIGNERS
UNIT C, 15/F THOMSON COMMERCIAL BUILDING,
8 THOMSON ROAD, WAN CHAI, HONG KONG
TEL (852) 28800395 FAX (852) 25647321

PROJECT
PROPOSED TEMPORARY
OPEN VEHICLE PARK &
PUBLIC UTILITY INSTALLATION
(SOLAR ENERGY SYSTEM)
AT VARIOUS LOTS IN DD7 LOT 237

DRAWING TITLE
PRELIMINARY DRAINAGE PROPOSAL
(FOR INDICATIVE PURPOSE ONLY)

SCALE	比例	DATE	日期
1:800		08 / 05 / 2024	
DRAWN BY	繪圖人	CHECKED BY	檢查人
QC		FL	
JOB NO.	工程項目	DRAWING NO.	圖號
24-025		D-1	