
Appendix B

Landscape Master Plan and Tree Survey and Preservation Proposal

Section 16 Planning Application for Proposed Residential Development with Minor Relaxation of Plot Ratio Restriction at Lots 1027, 1029, 1030, 1034A, 1034B, 1039 (Part), 1040, 1042 RP, 1043 RP, 1044 RP (Part), 1045, 1047, 2233 (Part), 2251 S.A RP, 2256 RP, 2315 (Part) and 2316 RP (Part) in D.D. 92 and Adjoining Government Land (New Lot to be known as Lot 2644 in D.D. 92), Kwu Tung South, Sheung Shui, New Territories

LANDSCAPE MASTER PLAN SUBMISSION

SEPTEMBER 2025

Landscape Government
Submission Consultant
Signed by:

Axxa Group Limited



Ms. Jason TEO, Registered Landscape Architect (R101)



axxa group

Table of Contents

- 1.0 Introduction**
- 2.0 Assessment of the Potential Impacts on Existing Trees**
- 3.0 Landscape Objectives**
- 4.0 Landscape Master Plan**
 - 4.1 Residential Units
 - 4.2 General Landscape Area
 - 4.3 Access Road/ Main Entry/ Streetscape
 - 4.4 Landscape Buffer Areas
- 5.0 Hard Landscape (Paving Materials/ Finishes)**
 - 5.1 Hard Landscape Materials
 - 5.2 Landscape Lighting
 - 5.3 Design Codes, Technical Standards & Safety Provision
- 6.0 Soft Landscape (Planting Design/ Materials)**
 - 6.1 Soft Landscape Materials
 - 6.2 Plant Material Tables
 - 6.3 Landscape Provision
 - 6.4 Soil Depth and Drainage Provision for the Planted Area
 - 6.5 Irrigation and Proposed Source of Water Supply

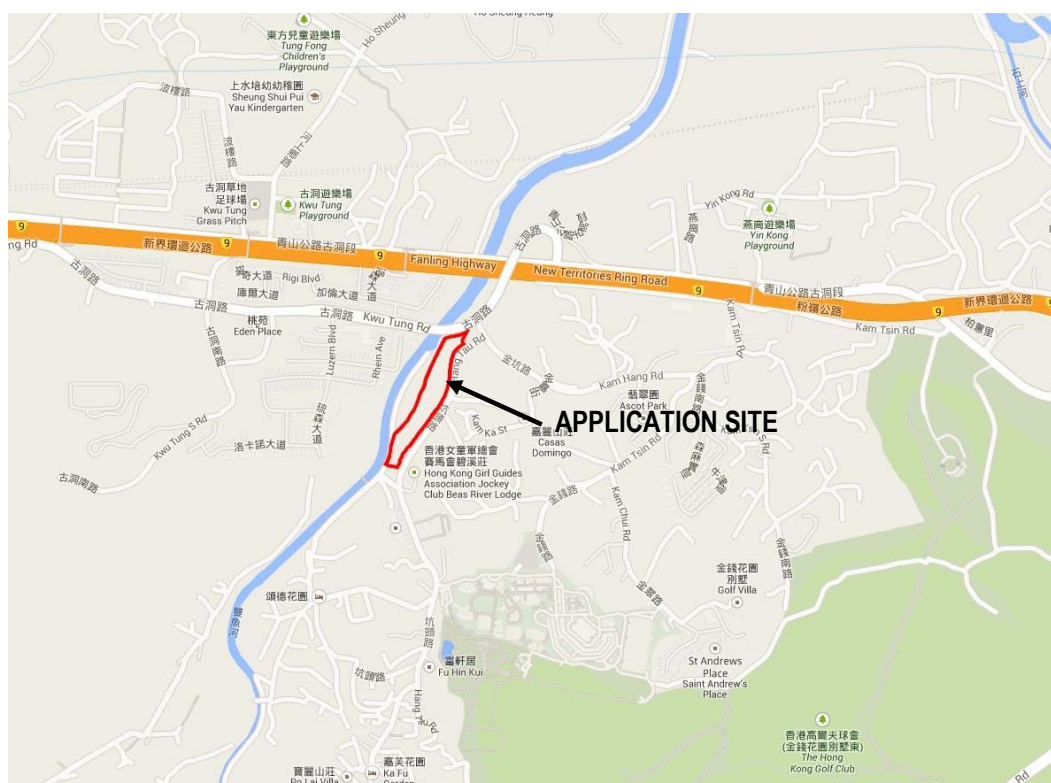
APPENDICES

- Appendix A** Landscape Master Plan
- Appendix B** Landscape Sections
- Appendix C** Open Space Demarcation Plan

1.0 Introduction

- 1.1 This Landscape Master Plan is submitted to support S16 Planning Application for Proposed Residential Development with Minor Relaxation of Plot Ratio Restriction (referred to as the "Proposed Scheme") at Lots 1027, 1029, 1030, 1034A, 1034B, 1039 (Part), 1040, 1042 RP, 1043 RP, 1044 RP (Part), 1045, 1047, 2233 (Part), 2251 S.A RP, 2256 RP, 2315 (Part) and 2316 RP (Part) in D.D. 92 and Adjoining Government Land (New Lot to be known as Lot 2644 in D.D. 92), Kwu Tung South, Sheung Shui, New Territories.
- 1.2 The Application Site lies to the west of the outer fringe of the Sheung Shui/ Fanling new town in the northeast New Territories. It is bounded by Kwu Tung Road to the north, Hang Tau Road to the east and an existing footpath to the south. To the immediate west of the Application Site are some planting areas and an abandoned meander established under the rehabilitation works of River Beas managed by the Agriculture, Fisheries and Conservation Department (AFCD). The site is accessible by the existing Hang Tau Road.
- 1.3 The Application Site is well-served by a comprehensive transport network. It is located at the outer fringe of the Sheung Shui/ Fanling new town and is close to the proposed Kwu Tung North New Development Area (KTN NDA). It connects to the wider territory via Kwu Tung Road which links to Castle Peak Road at Pak Shek Au Interchange, to Fanling Highway via Pak Shek Au and San Tin Interchanges lying to the west of the Application Site, as well as via Castle Peak Road and Fan Kam Road Interchange lying to the east of the Application Site. The Sheung Shui to Lok Ma Chau Spur Line, a second railway link to the Mainland, was completed in 2007.
- 1.4 The Application Site is subject to an approved rezoning application. In October 2022, Town Planning Board (TPB) partially approved application no. Y/NE-KTS/15 (hereafter referred to as "Previous Scheme") to allow upzoning of the site, permitting development with maximum building height of 70mPD and plot ratio of 2. Landscape Master Plan and Tree Survey and Preservation Proposal were submitted under the Previous Scheme.

Figure 1 Site Location Plan



2.0 **Assessment of the Potential Impacts on Existing Trees**

- 2.1 According to the Tree Survey and Preservation Proposal dated September 2025, there are a total of **275** nos. of existing trees surveyed. The following **Table 1** shows the tree treatment schedule:

Table 1: Tree Treatment and Tree Planting Proposal Schedule

Description	Previous Scheme	Proposed Scheme	Difference
Total Nos. of Trees <u>Surveyed</u>	275	275	0
Nos. of Trees Proposed to be <u>Retained</u>	10	11	+1
Nos. of Trees Proposed to be <u>Transplanted</u>	2	2	0
Nos. of Trees Proposed to be <u>Felled</u>	239	239	0
Nos. of Dead Trees Proposed to be <u>Felled</u>	24	23	-1
Total Nos. of <u>New Trees</u> to be Planted	239	261	+22*

*Remarks: Replanting ratio of more than 1:1 in terms of quantity is achieved.

3.0 **Landscape Objectives**

- 3.1 The primary landscape objectives are:
- 3.1.1 To integrate the Proposed Development from a landscape and visual perspective with the existing and planned landscape context;
 - 3.1.2 To use landscape measures to soften the form of the proposed architectural scheme;
 - 3.1.3 To provide a quality and sustainable living environment for the future residents;
 - 3.1.4 To provide adequate open space for the future residents;
 - 3.1.5 To maximize, where possible, the retention of existing landscape resources such as existing trees;
 - 3.1.6 To maximize opportunities for the planting of new trees and shrubs.

4.0 **Landscape Master Plan**

This section provides a broad description of the design, function and amenity provisions for the landscape components. Refer to **Appendix A** and **B** for details.

4.1 **Residential Units**

- 4.1.1 The proposed scheme consists of 3 nos. of not more than 16-storey residential towers with clubhouse and basement carpark. It is designed as an integration of residential towers and landscape elements arranged in linear form to create a natural environment.

4.2 General Landscape Area

4.2.1 Landscape areas adopt a hierarchical approach to the sequence of spaces and the movement from communal areas to more intimate spaces. The landscape areas include the following:

(i) Clubhouse Landscape Area

- The clubhouse is designed as a central node and a visual landmark reference point within the development. It consists of hard and soft landscape areas for multi-functional usage suitable for function/ event and recreation facilities.
- The swimming pool will adopt a rectangular shape and will be surrounded by decking.

(ii) Landscape Garden

- They are located in the northern and southern portion of the Application Site to support a variety of open space functions such as children play area, pet garden and BBQ area.

(iii) Avenue Tree Planting

- A combination of trees and shrub planting will be provided along the EVA of the Proposed Development. This creates a lush tree planting avenue. Colour paving and patterns will be used to delineate the road bed and adjacent sidewalk to create an inviting environment upon which pedestrians will feel safe and comfortable. These measures are designed to enhance the character, vitality, amenity and safety of the Proposed Development.

4.3 Access Road / Main Entry / Streetscape

4.3.1 The Application Site is directly accessible from Hang Tau Road.

4.3.2 The internal road that forms the main north – south aligned spine of the Proposed Development has been designed to create a streetscape type character with decorative paving and is lined by tree planting and where space allows an amenity strip.

4.4 Landscape Buffer Areas

4.4.1 A tree buffer zone is proposed along the western boundary of the Application Site. An extra row of trees will be provided alongside the tree buffer zone wherever feasible at appropriate location. The tree buffer zone together with the extra row of trees will be about 4m- to 8m-wide.

4.4.2 The western buffer will aim to integrate the Proposed Development with the existing landscape framework and to allow smooth transition to the adjacent compensatory planting area.

4.4.3 A 3m-wide landscape strip will be established to form an eastern buffer area to soften the form of the proposed architectural scheme, and partially screen the Proposed Development in views from the adjacent developments on the eastern periphery of Hang Tau Road and create a transition between the two developed areas.

5.0 **Hard Landscape (Paving Materials / Finishes)**

This section provides a description of the hardscape design together with general information on hardscape related aspects of the design which relate to all phases, including lighting, levels and technical standards. Hardscape elements of the landscape include: paving; walls; site structures; water features; site furniture; signage and lighting.

5.1 **Hard Landscape Materials**

- 5.1.1 Hardscape materials and design are chosen to compliment the building finishes, add character to the development and provide variety to the circulation areas.
- 5.1.2 Natural stone materials and/ or artificial granite tiles, all suitable for outdoor uses are proposed for outdoor paving materials and wall finishes.
- 5.1.3 Swimming pool is proposed to be paved with mosaic tiles and pool deck in non-slip materials.
- 5.1.4 The use of varied finishes to granite and/ or artificial granite tiles provide for safe application through varied textures in the paving pattern design, including ripple texture, brush and hammered finishes.
- 5.1.5 Natural material textures exhibit a natural variation in material colour, adding interest to the patterns and helping to highlight entrances to different functional zones.
- 5.1.6 A summary of the hardscape materials is listed in the Preliminary Finishes Schedule for Hardscape. Refer to **Table 2** below:

Table 2: Preliminary Finishes Schedule for Hardscape

Preliminary Finishes Schedule for Hardscape	
Pedestrian walkway	Artificial granite and concrete block punctuated by natural granite banding and accents
Internal roads	Concrete blocks punctuated by artificial granite paving
Landscape gardens and open spaces	Concrete block and natural granite
Swimming pool	Mosaic tiles
Timber deck areas	Recycled plastic
Pool deck	Non-slip materials
Planter walls	Natural granite stones or artificial granite tiles
Railing	Glass or/and galvanised metal

5.2 **Landscape Lighting**

- 5.2.1 The landscape lighting design for all areas will follow an aesthetic and functional approach. Generally, lighting will be provided for the safety and security of pedestrian circulation as well as highlighting specific landscape features.

5.3 Design Codes, Technical Standards & Safety Provision

- 5.3.1 Hard landscape design works shall be in compliance with, or better than, government ordinances, codes and regulations, and relevant international standards. Criteria for the selection of hard landscape materials include: durability, sustainability, low maintenance, reasonable cost, contemporary theme and specific criteria for themed areas as necessary.

6.0 Soft Landscape (Planting Design / Materials)

This section provides a description of the soft landscape design and softscape elements together with general information on softscape related aspects of design, including irrigation and maintenance. Softscape elements of the landscape include plantings, planting soil and sub-surface drainage materials.

6.1 Soft Landscape Materials

- 6.1.1 The design incorporates a varied planting palette to yield changing variety and seasonal interest. Evergreen trees, flowering trees and shrubs, variegated foliage plants and groundcover is selected.
- 6.1.2 In general, shrubs and groundcovers will be mass planted in specific colour groupings, and designed to provide an engaging flowering under-storey layer beneath trees. Integral to any good landscape planting design, colour, texture and contrast of foliage will be articulated to best showcase the planting design. Flowers and fragrance are important elements to enhance the planting design for this area. Fragrant species will be utilized alongside pathways and adjacent to seating areas to tease and raise the human sensory awareness.
- 6.1.3 Carefully selected species will ensure maximum greening effect with minimum maintenance requirements. Specimen trees of various sizes will be used in combination with ornamental shrub planting to create a year-round display.
- 6.1.4 A summary of softscape materials (categories of planting, species list, and size) is provided in section 6.2 below.

6.2 Plant Material Tables

- 6.2.1 The following list indicates the proposed combination of native and exotic tree species along with suitable ornamental evergreen and flowering species to strengthen the greening/ conservation. All plants are selected to suit local climate, and native species will be selected for the **tree buffer zone** along the western boundary within the Application Site to establish synergy with planting areas outside the Application Site to provide screening/ buffering effect.
- 6.2.2 The summary schedule of key plant material listed below is subject to further refinement and market availability upon detail design stage. Refer to **Table 3A** and **3B** below:

Table 3A Proposed Tree Planting Schedule

Proposed Species	Chinese Name	Quantity/ Size
<i>Bauhinia x blakeana</i> *	洋紫荊	261 nos. Size: Heavy Standard Size 4m-5m High; 4m Spread; DBH 0.10m
<i>Bischofia javanica</i> *	秋楓	
<i>Bridelia tomentosa</i> *	土蜜樹	
<i>Celtis sinensis</i> *	朴樹	
<i>Cleistocalyx nervosum</i> *	水翁	
<i>Crateva unilocularis</i>	樹頭菜	
<i>Ilex rotunda</i>	鐵冬青	
<i>Liquidambar formosana</i> *	楓香	
<i>Litchi chinensis</i>	荔枝	
<i>Michelia x alba</i>	白蘭	
<i>Nageia nagi</i>	竹柏	
<i>Polyspora axillaris</i> *	大頭茶	
<i>Psidium guajava</i>	番石榴	
<i>Schima superba</i> *	木荷	
<i>Sterculia lanceolata</i> *	假蘋婆	
<i>Syzygium cumini</i>	海南蒲桃	
<i>Syzygium jambos</i>	蒲桃	
<i>Vernicia montana</i>	木油樹	

Remarks: * Native Tree Species

Table 3B: Proposed Shrubs and Groundcover Species

Botanical Name	Chinese Name	Height x Spread (mm)	Spacing (mm)
Shrub Species			
Atalantia buxifolia*	酒餅簕	300 x 300	250-500
Desmos chinensis*	假鷹爪	500 x 400	
Ligustrum sinense	山指甲	300 x 300	
Melastoma malabathricum*	野牡丹	500 x 400	
Psychotria asiatica*	九節	500 x 400	
Phoenix roebelenii	江邊刺葵	500 x 400	
Pennisetum alopecuroides*	狼尾草	300 x 300	
Philodendron selloum	春羽	500 x 400	
Raphiolepis indica*	車輪梅	600 x 500	
Rhapis humilis	細葉棕竹	600 x 500	
Schefflera actinopylla	輻葉鵝掌柴	600 x 500	
Sedum lineare	佛甲草	300 x 300	
Verbena bonariensis	南美馬鞭草	500 x 300	
Ground Cover Species			
Asparagus densiflorus	非洲天門冬	300 x 300	150-300
Cuphea hyssopifolia	細葉萼距花	300 x 300	
Phyllanthus myrtifolius	瘤腺葉下珠	200 x 200	
Lawn Species			
Zoysia japonica	台灣草	N/A	
Paspalum vaginatum*	海雀稗	N/A	

Remarks: * Native Species

6.3 Landscape Provision

Greenery Provision

Not less than 20% of the total greenery area will be provided in accordance with the requirement of PNAP APP-152.

Open Space Provision

The total Application Site area is about 19,591m² with a design population of 2,868. With a total open space provision of not less than 2,868m², the minimum standard of 1m² per person as stipulated in Chapter 4 of the Hong Kong Planning Standards and Guidelines is achieved by the proposed layout. Refer to **Appendix C** for details.

6.4 Soil Depth and Drainage Provision for the Planted Area

6.4.1 The need for adequate soil depths to ensure proper plant growth is taken into account for all planting areas. The appropriate soil depths (approximate and excluding drainage layers) are:

- Trees: 1200mm
- Shrub: 600mm
- Groundcover/ lawn: 300mm

6.4.2 Structural engineers have made sufficient allowances to accommodate the necessary planting components, i.e., plant stock, soil volume and sub-surface drainage materials loading.

6.4.3 Closed bottom planters will have proper and adequate subsoil drainage system and drain outlets to the storm water drainage system.

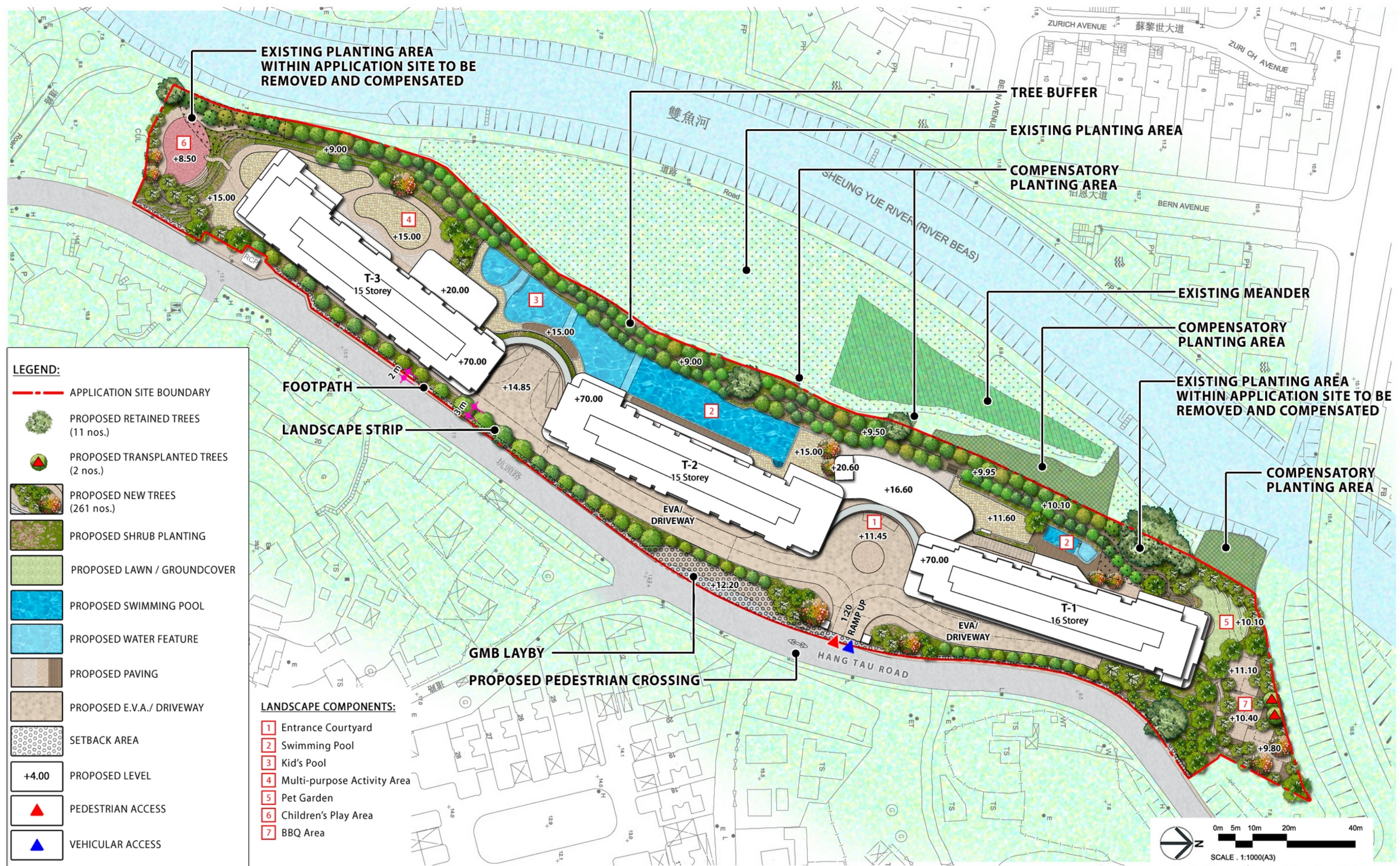
6.4.4 The landscape works are designed to avoid obstruction of the maintenance of drainage works. Adequate clearance between drainage works and landscape works will be maintained so as to prevent any potential damage to drainage works.

6.5 Irrigation and Proposed Source of Water Supply

6.5.1 Water points (not more than 40m apart c/c) are located throughout the Application Site for irrigation.

APPENDIX A

Landscape Master Plan



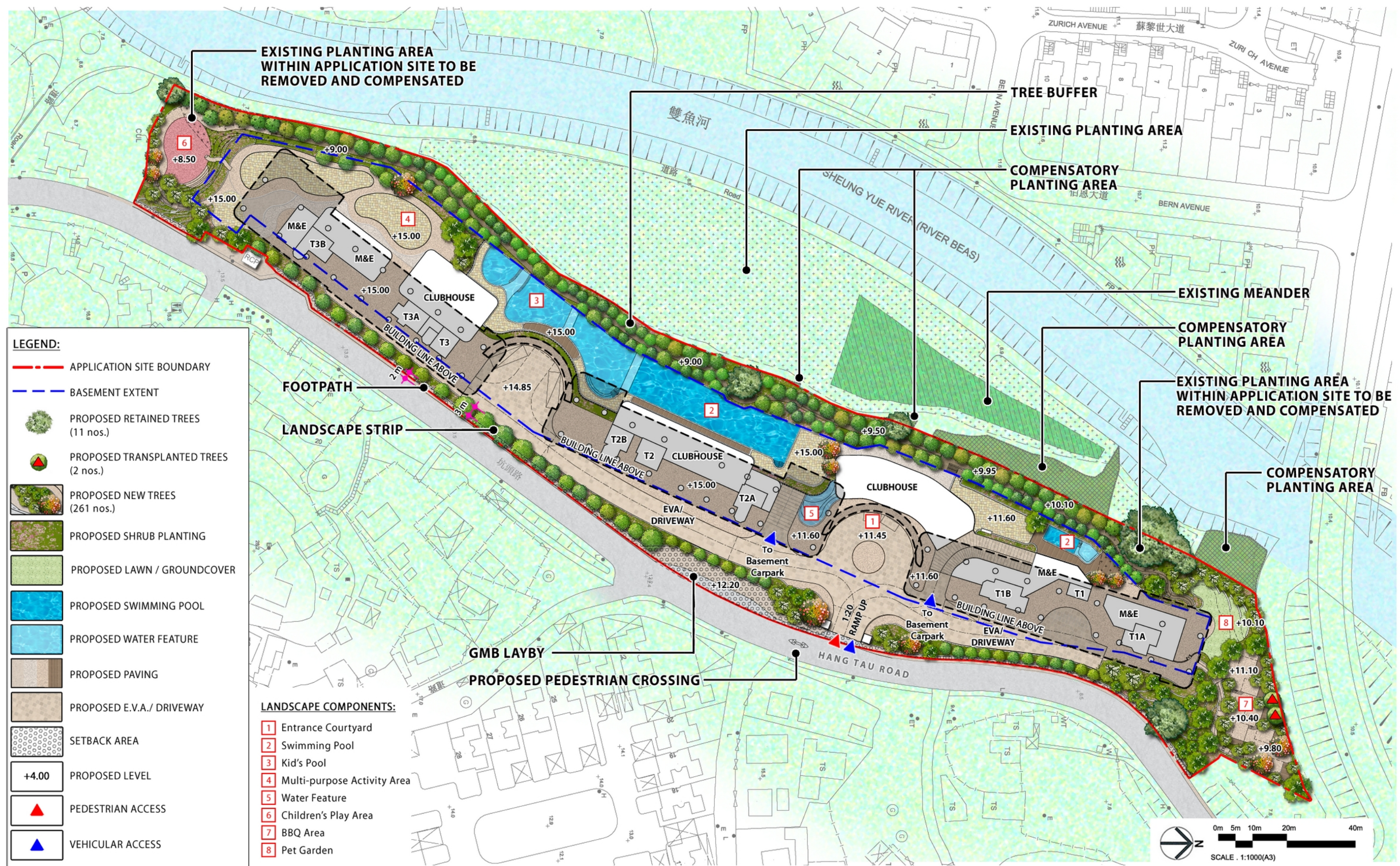
Section 16 Planning Application for Proposed Residential Development with Minor Relaxation of Plot Ratio Restriction at Lots 1027, 1029, 1030, 1034A, 1034B, 1039 (Part), 1040, 1042 RP, 1043 RP, 1044 RP (Part), 1045, 1047, 2233 (Part), 2251 S.A RP, 2256 RP, 2315 (Part) and 2316 RP (Part) in D.D. 92 and Adjoining Government Land (New Lot to be known as Lot 2644 in D.D. 92), Kwu Tung South, Sheung Shui, New Territories

Landscape Master Plan - Composite Plan

Dwg. No. : 2013216-S16-2024-LMP-01

Date : AUG 2025
(A3-size)





Section 16 Planning Application for Proposed Residential Development with Minor Relaxation of Plot Ratio Restriction at Lots 1027, 1029, 1030, 1034A, 1034B, 1039 (Part), 1040, 1042 RP, 1043 RP, 1044 RP (Part), 1045, 1047, 2233 (Part), 2251 S.A RP, 2256 RP, 2315 (Part) and 2316 RP (Part) in D.D. 92 and Adjoining Government Land (New Lot to be known as Lot 2644 in D.D. 92), Kwu Tung South, Sheung Shui, New Territories

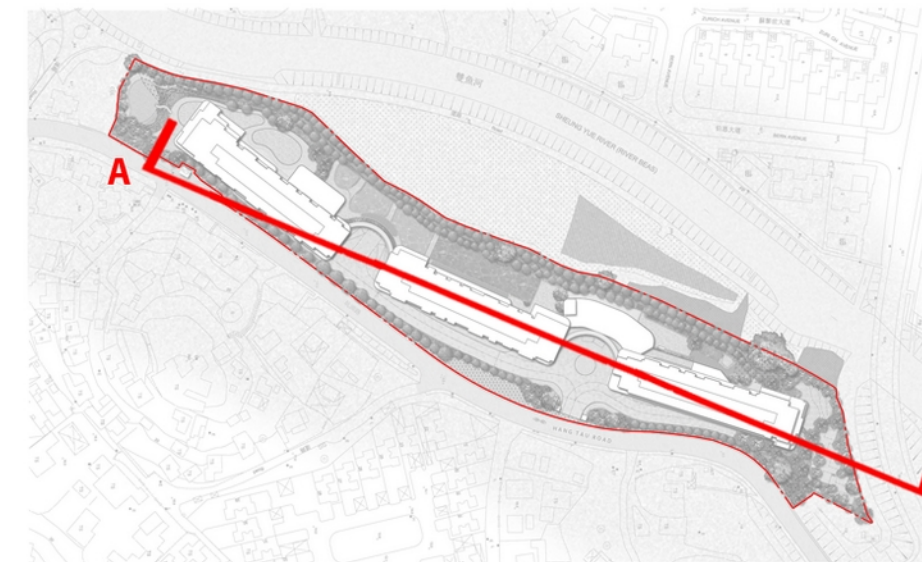
Landscape Master Plan - Ground Floor

Dwg. No. : 2013216-S16-2024-LMP-02

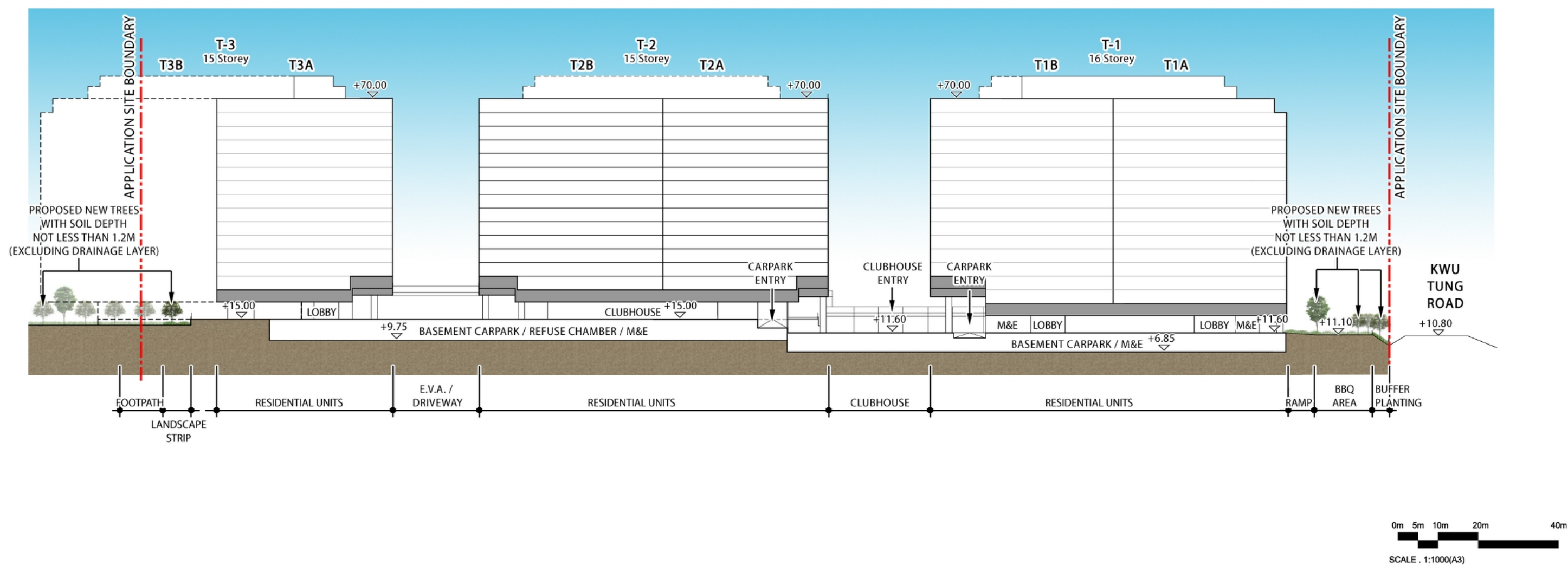
Date : AUG 2025
(A3-size)

APPENDIX B

Landscape Sections



KEYPLAN



Section 16 Planning Application for Proposed Residential Development with Minor Relaxation of Plot Ratio Restriction at Lots 1027, 1029, 1030, 1034A, 1034B, 1039 (Part), 1040, 1042 RP, 1043 RP, 1044 RP (Part), 1045, 1047, 2233 (Part), 2251 S.A RP, 2256 RP, 2315 (Part) and 2316 RP (Part) in D.D. 92 and Adjoining Government Land (New Lot to be known as Lot 2644 in D.D. 92), Kwu Tung South, Sheung Shui, New Territories

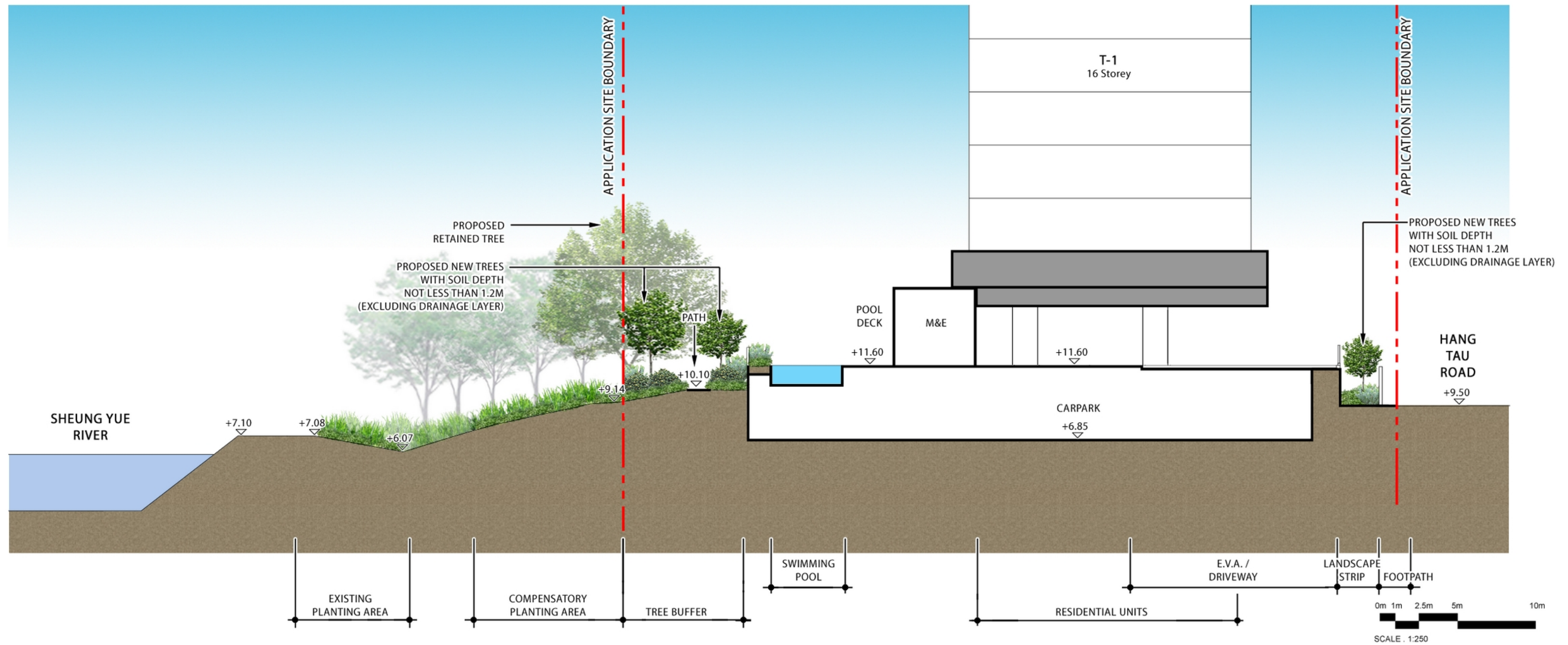
Landscape Section A
Dwg. No. : 2013216-S16-2024-SEC-01

Date : AUG 2025
(A3-size)





KEYPLAN

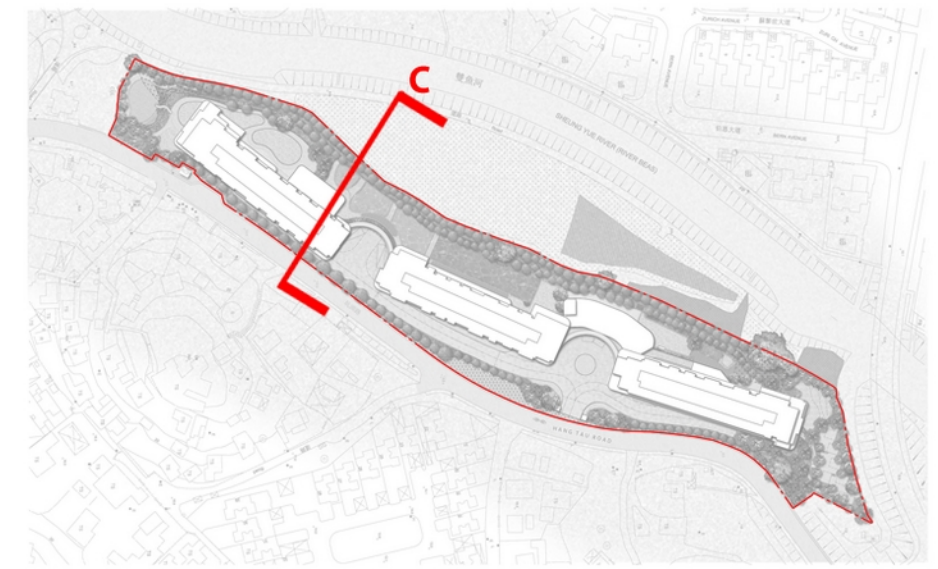


Section 16 Planning Application for Proposed Residential Development with Minor Relaxation of Plot Ratio Restriction at Lots 1027, 1029, 1030, 1034A, 1034B, 1039 (Part), 1040, 1042 RP, 1043 RP, 1044 RP (Part), 1045, 1047, 2233 (Part), 2251 S.A RP, 2256 RP, 2315 (Part) and 2316 RP (Part) in D.D. 92 and Adjoining Government Land (New Lot to be known as Lot 2644 in D.D. 92), Kwu Tung South, Sheung Shui, New Territories

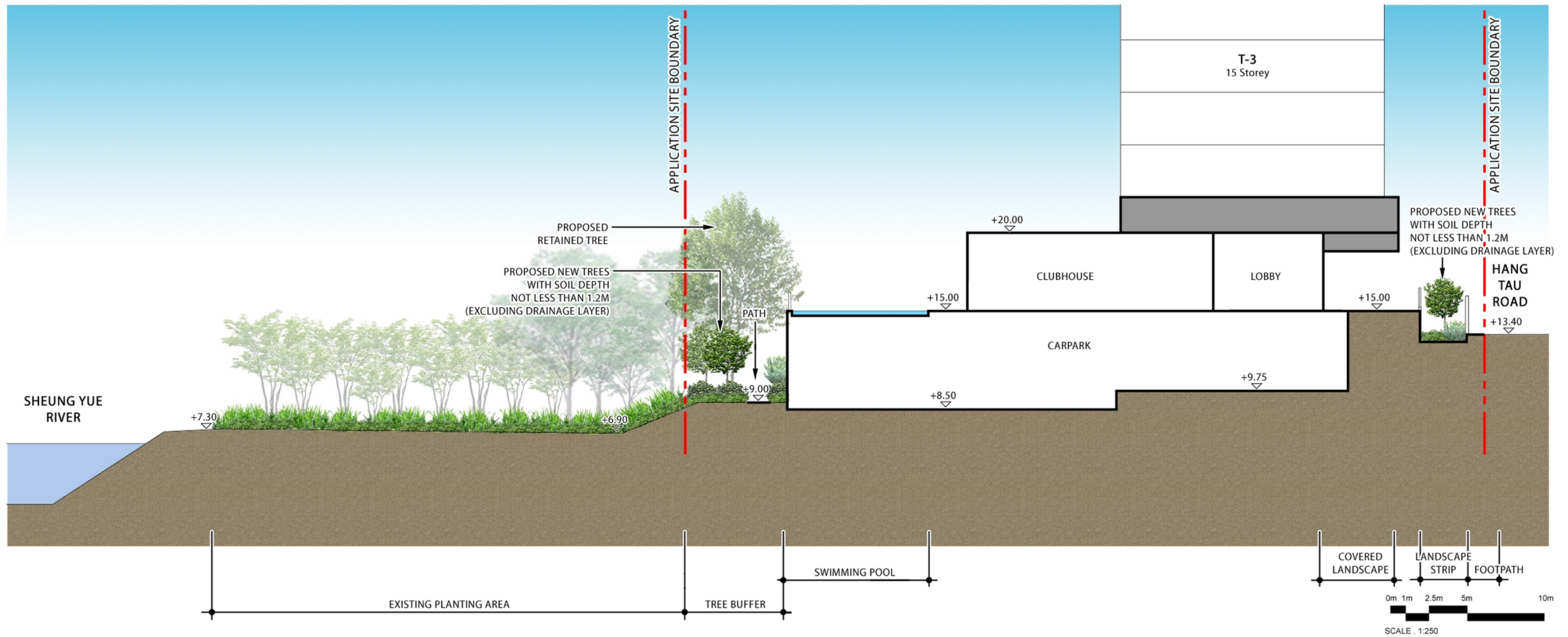
Landscape Section B
Dwg. No. : 2013216-S16-2024-SEC-02

Date : AUG 2025
(A3-size)





KEYPLAN



Section 16 Planning Application for Proposed Residential Development with Minor Relaxation of Plot Ratio Restriction at Lots 1027, 1029, 1030, 1034A, 1034B, 1039 (Part), 1040, 1042 RP, 1043 RP, 1044 RP (Part), 1045, 1047, 2233 (Part), 2251 S.A RP, 2256 RP, 2315 (Part) and 2316 RP (Part) in D.D. 92 and Adjoining Government Land (New Lot to be known as Lot 2644 in D.D. 92), Kwu Tung South, Sheung Shui, New Territories

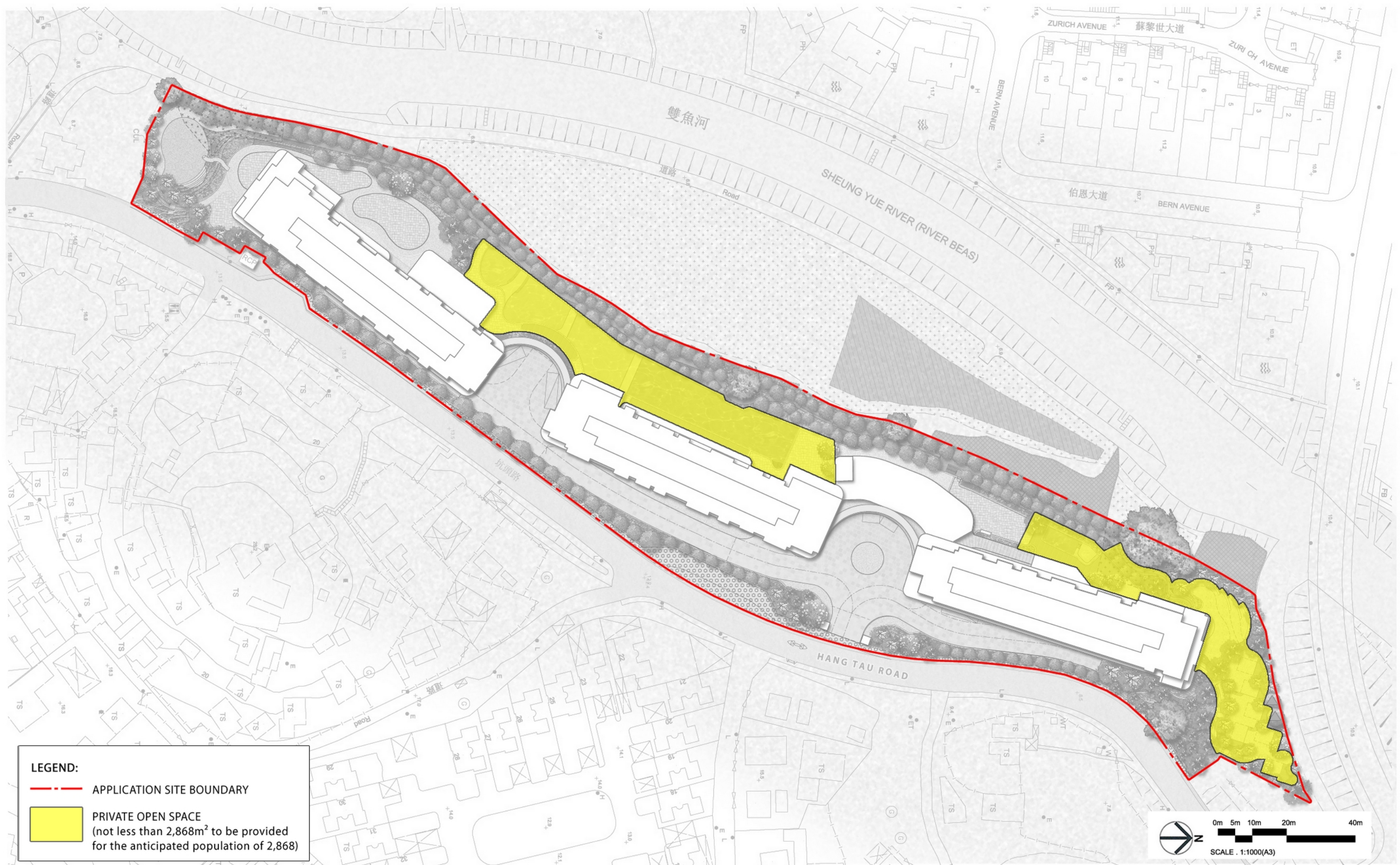
Landscape Section C
Dwg. No. : 2013216-S16-2024-SEC-03

Date : AUG 2025
(A3-size)



APPENDIX C

Open Space Demarcation Plan



Section 16 Planning Application for Proposed Residential Development with Minor Relaxation of Plot Ratio Restriction at Lots 1027, 1029, 1030, 1034A, 1034B, 1039 (Part), 1040, 1042 RP, 1043 RP, 1044 RP (Part), 1045, 1047, 2233 (Part), 2251 S.A RP, 2256 RP, 2315 (Part) and 2316 RP (Part) in D.D. 92 and Adjoining Government Land (New Lot to be known as Lot 2644 in D.D. 92), Kwu Tung South, Sheung Shui, New Territories

Open Space Demarcation Plan

Dwg. No. : 2013216-S16-2024-ODP-01

Date : AUG 2025
(A3-size)



Section 16 Planning Application for Proposed Residential Development with Minor Relaxation of Plot Ratio Restriction at Lots 1027, 1029, 1030, 1034A, 1034B, 1039 (Part), 1040, 1042 RP, 1043 RP, 1044 RP (Part), 1045, 1047, 2233 (Part), 2251 S.A RP, 2256 RP, 2315 (Part) and 2316 RP (Part) in D.D. 92 and Adjoining Government Land (New Lot to be known as Lot 2644 in D.D. 92), Kwu Tung South, Sheung Shui, New Territories

TREE SURVEY AND PRESERVATION PROPOSAL

SEPTEMBER 2025

Landscape Government
Submission Consultant

Axxa Group Limited



axxa group

Table of Contents

- 1.0 Introduction**
- 2.0 Survey Methods and Assessment Criteria**
- 3.0 General Description of Existing Trees**
- 4.0 Tree Treatment Proposal**
- 5.0 Tree Planting Proposal**
- 6.0 Summary of Tree Treatment and Tree Planting Proposal**

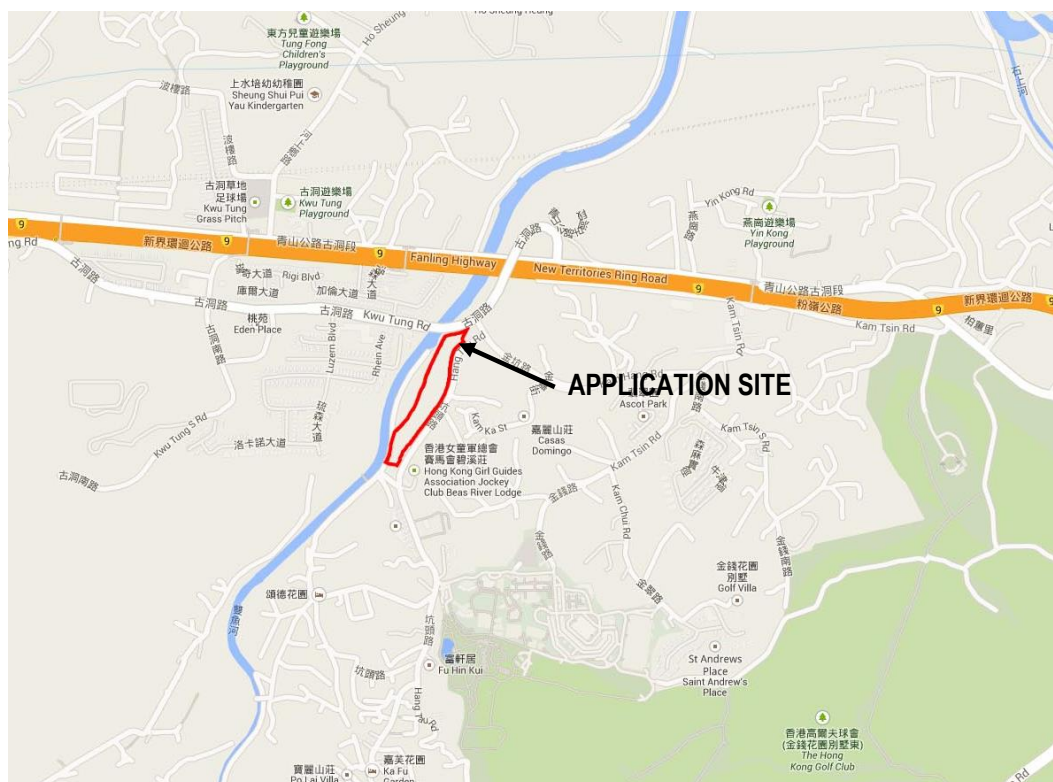
APPENDICES

- Appendix 1** Tree Treatment Schedule
- Appendix 2** Photographic Record of Existing Trees
- Appendix 3** Tree Survey Plan
- Appendix 4** Tree Treatment Plan
- Appendix 5** Tree Planting Plan

1.0 INTRODUCTION

- 1.1 This Tree Survey and Preservation Report is submitted to support S16 Planning Application for Proposed Residential Development with Minor Relaxation of Plot Ratio Restriction (referred to as the “Proposed Scheme”) at Lots 1027, 1029, 1030, 1034A, 1034B, 1039 (Part), 1040, 1042 RP, 1043 RP, 1044 RP (Part), 1045, 1047, 2233 (Part), 2251 S.A RP, 2256 RP, 2315 (Part) and 2316 RP (Part) in D.D. 92 and Adjoining Government Land (New Lot to be known as Lot 2644 in D.D. 92), Kwu Tung South, Sheung Shui, New Territories.
- 1.2 The Application Site lies to the west of the outer fringe of the Sheung Shui/ Fanling new town in the northeast New Territories. It is bounded by Kwu Tung Road to the north, Hang Tau Road to the east and an existing footpath to the south. To the immediate west of the Application Site are some planting areas and an abandoned meander established under the rehabilitation works of River Beas managed by the Agriculture, Fisheries and Conservation Department (AFCD). The site is accessible by the existing Hang Tau Road.
- 1.3 The Application Site is well-served by a comprehensive transport network. It is located at the outer fringe of the Sheung Shui/ Fanling new town and is close to the proposed Kwu Tung North New Development Area (KTN NDA). It connects to the wider territory via Kwu Tung Road which links to Castle Peak Road at Pak Shek Au Interchange, to Fanling Highway via Pak Shek Au and San Tin Interchanges lying to the west of the Application Site, as well as via Castle Peak Road and Fan Kam Road Interchange lying to the east of the Application Site. The Sheung Shui to Lok Ma Chau Spur Line, a second railway link to the Mainland, was completed in 2007.
- 1.4 The Application Site is subject to an approved rezoning application. In October 2022, Town Planning Board (TPB) partially approved application no. Y/NE-KTS/15 (hereafter referred to as “Previous Scheme”) to allow upzoning of the site, permitting development with maximum building height of 70mPD and plot ratio of 2. Landscape Master Plan and Tree Survey and Preservation Proposal were submitted under the Previous Scheme.

Figure 1 Site Location Plan



2.0 SURVEY METHODS AND ASSESSMENT CRITERIA

2.1 All living trees of 300mm girth (= 95mm diameter) or over (measured at 1.3m above ground level), within the Application Site were studied. Each tree was identified to species level, and its girth, height and spread measured. The condition of each tree was then evaluated according to the following criteria (Webb 1991)¹:

- Trees of good form, moderate to large size (for their species type) and in good health are classified as Good.
- Trees of reasonable form, with few or no visible defects or health problems are classified as Fair.
- Trees which are of poor form, badly damaged or clearly suffering from decay, die back, or the effects of very heavy vine growth are classified as Poor.

A general description of the trees on the Site follows in **Section 3**.

3.0 GENERAL DESCRIPTION OF EXISTING TREES

3.1 According to the tree survey carried out in January 2024, **275** nos. of existing trees are identified. Among these 275 nos. of existing trees, *Leucaena leucocephala* is the dominant species (33%), *Macaranga tanarius* comes the second (26%) and 23 nos. of trees are recorded as dead. The majority of trees within the Site are in 'fair' to 'poor' health condition and form with low amenity value.

3.2 There are no endangered tree species identified in the tree survey under the listing in "Protection of Endangered Species of Animals and Plants Ordinance (Cap. 586)". Additionally, there are no "Champion" trees observed within the Site or its periphery during the undertaking of this survey.

3.3 For details, please refer to Tree Treatment Schedule in **Appendix 1**, Photographic Record of Existing Trees in **Appendix 2** and Tree Survey Plan in **Appendix 3**.

4.0 TREE TREATMENT PROPOSAL

4.1 **Previous Scheme (Based on Landscape Master Plan approved by TPB on 28 Oct 2022 under Application No. Y/NE-KTS/15)**

4.1.1 Tree Retention In-situ (10 nos.)

- **10** nos. of trees (Tree Nos. 1, 35, 48, 49, 50, 51, 57, 74, 75 and 92) were approved to be retained based on Landscape Master Plan approved by TPB on 28 Oct 2022 under Application No. Y/NE-KTS/15.

4.1.2 Tree Transplantation (2 nos.)

- **2** nos. of trees (Tree Nos. 7A and 7B) were approved to be transplanted based on the Landscape Master Plan previously approved by TPB on 28 Oct 2022 under Application No. Y/NE-KTS/15.

4.1.3 Tree Felling (239 nos.)

- **239** nos. of trees were approved to be felled based on the Landscape Master Plan previously approved by TPB on 28 Oct 2022 under Application No. Y/NE-KTS/15. Among them, 39 nos. were recorded to be felled by LCSD's contractor.

¹ Webb, R(ed.) 1991 Tree Planting & Maintenance in Hong Kong, Government Printer

4.1.4 Dead Trees (24 nos.)

- 24 nos. of trees were approved to be felled based on the Landscape Master Plan previously approved by TPB on 28 Oct 2022 under Application No. Y/NE-KTS/15.

4.2 Current Scheme

4.2.1 Tree Retention In-situ (11 nos.)

- Among 10 nos. of retained trees previously approved by TPB on 28 Oct 2022 under Application No. Y/NE-KTS/15,
 - 6 nos. approved retained trees (Tree Nos. 1, 35, 57, 74, 75 and 92) are in fair health condition and will be retained in-situ;
 - 3 nos. approved retained trees (Tree No. 48, 50 and 51) were found dead due to natural deterioration and 1 no. approved retained tree (Tree no. 49) is invasive species *Leucaena leucocephala*. They are proposed to be felled.
- Nevertheless, 5 nos. previous approved felled trees *Ehretia acuminata* (Tree No. 77, 78, 79, 80 and 81) can now be retained in-situ.

4.2.2 Tree Transplantation (2 nos.)

- 2 nos. of approved transplanted trees (Tree Nos. 7A and 7B) are currently in fair health condition.

4.2.3 Tree Felling (239 nos.)

- Among 239 nos. of approved felled trees previously approved by TPB on 28 Oct 2022 under Application No. Y/NE-KTS/15,
 - 234 nos. of trees were approved to be felled (including 39 nos. recorded to be felled by LCSD's contractor). Their tree treatment remains unchanged;
 - 5 nos. approved felled trees *Ehretia acuminata* (Tree No. 77, 78, 79, 80 and 81) can now be retained in-situ.
- Additional 5 nos. of trees are proposed to be felled,
 - 3 nos. approved retained trees (Tree No. 48, 50 and 51) were found dead due to natural deterioration;
 - 1 no. approved retained trees (Tree no. 49) is invasive species *Leucaena leucocephala*;
 - 1 no. existing tree (Tree No. 13) in direct conflict with the proposed development.

4.2.4 Dead Trees (23 nos.)

- Among 24 nos. of dead trees previously approved to be felled by TPB on 28 Oct 2022 under Application No. Y/NE-KTS/15,
 - 23 nos. of trees were dead trees to be felled (including 8 nos. recorded to be felled by LCSD's contractor). Their tree treatment remains unchanged;
 - 1 no. (Tree No. 241) was previously a dead tree but rejuvenates with sprouts growing out from a broken trunk. Its health and structure remains very poor, and thus the tree is proposed to be felled. For details, please refer to Tree Treatment Plan in **Appendix 4**.

5.0 TREE PLANTING PROPOSAL

Major objectives of this current Tree Planting Proposal are listed below:

- To enhance greenery by planting trees;
- To show the recipient locations of transplanted trees;
- To enhance greenery and local ecology through species diversification.

Please refer to **Table 1** for the proposed tree species & size for the Tree Planting Proposal. All plants are selected to suit local climate, and native species will be selected for the **tree buffer zone** along the western boundary **within the Application Site** to establish synergy with planting areas **outside the Application Site** to provide screening/ buffering effect. For details, please refer to Tree Planting Plan in **Appendix 5**.

Table 1 Proposed Tree Planting Schedule

Proposed Species	Chinese Name	Quantity/ Size
<i>Bauhinia x blakeana</i> *	洋紫荊	<p>261 nos.</p> <p>Size: Heavy Standard Size 4m-5m High; 4m Spread; DBH 0.10m</p>
<i>Bischofia javanica</i> *	秋楓	
<i>Bridelia tomentosa</i> *	土蜜樹	
<i>Celtis sinensis</i> *	朴樹	
<i>Cleistocalyx nervosum</i> *	水翁	
<i>Crateva unilocularis</i>	樹頭菜	
<i>Ilex rotunda</i>	鐵冬青	
<i>Liquidambar formosana</i> *	楓香	
<i>Litchi chinensis</i>	荔枝	
<i>Michelia x alba</i>	白蘭	
<i>Nageia nagi</i>	竹柏	
<i>Polyspora axillaris</i> *	大頭茶	
<i>Psidium guajava</i>	番石榴	
<i>Schima superba</i> *	木荷	
<i>Sterculia lanceolata</i> *	假蘋婆	
<i>Syzygium cumini</i>	海南蒲桃	
<i>Syzygium jambos</i>	蒲桃	
<i>Vernicia montana</i>	木油樹	

Remarks: * Native Tree Species

6.0 SUMMARY OF TREE TREATMENT AND TREE PLANTING PROPOSAL

A summary of Tree Treatment and Tree Planting Proposal is shown in **Table 2**:

Table 2: Tree Treatment and Tree Planting Proposal Schedule

Description	Previous Scheme	Proposed Scheme	Difference
Total Nos. of Trees <u>Surveyed</u>	275	275	0
Nos. of Trees Proposed to be <u>Retained</u>	10	11 ⁽¹⁾	+1
Nos. of Trees Proposed to be <u>Transplanted</u>	2	2	0
Nos. of Trees Proposed to be <u>Felled</u>	239	239 ⁽²⁾	0
Nos. of Dead Trees Proposed to be <u>Felled</u>	24	23 ⁽³⁾	-1
Total Nos. of <u>New Trees</u> to be Planted	239	261	+22

Remarks:

⁽¹⁾ Total No. of Trees to be Retained

10 nos. - 3 nos. due to natural deterioration (tree nos. 48, 50 and 51) - 1 no. *Leucaena leucocephala* (tree no. 49) + 5 nos. *Ehretia acuminata* to retain (tree nos. 77, 78, 79, 80 and 81) = **11 nos.**

⁽²⁾ Total No. of Trees to be Felled

239 nos. - 5 nos. *Ehretia acuminata* to retain (tree nos. 77, 78, 79, 80 and 81) + 3 nos. due to natural deterioration (tree no. 48, 50, 51) + 1 no. *Leucaena leucocephala* (tree no. 49) + 1 no. (tree no. 13) due to conflict with the proposed development layout = **239 nos.**

⁽³⁾ Total No. of Dead Trees to be Felled

24 nos. - 1 no. previous dead tree rejuvenates but remains poor in health and structure (tree no. 241) = **23 nos.**

APPENDIX 1

Tree Treatment Schedule

Tree Treatment Schedule

Tree No.	Species		Tree Size			Proposed Treatment		Remarks ¹ (Old and Valuable Tree (OVT), potentially registrable OVT, rare species, protected species, ecological and historical significance, etc.)
	Scientific Name	Chinese Name	Height (m)	DBH ² (mm)	Crown Spread (m)	In Approved S12A Application by TBP on 28/10/2022 (<u>R</u> etain/ <u>T</u> ransplant/ <u>F</u> ell/ <u>F</u> ell(<u>D</u> ead))	Current Treatment (<u>R</u> etain/ <u>T</u> ransplant/ <u>F</u> ell/ <u>F</u> ell(<u>D</u> ead))	
1	<i>Bombax ceiba</i>	木棉	9	300	7	R	R	
2	<i>Ficus microcarpa</i>	細葉榕	6	340	6	F	F	Multi-trunks / severely leaning
4	<i>Litsea monopetala</i>	假柿樹	13	330	6	F	F	Covered by climber / decay / dead branch
5	<i>Syzygium samarangense</i>	洋蒲桃	12	380	10	F	F	Broken branch / covered by climber / cavity
6	<i>Ilex rotunda</i>	鐵冬青	7	130	4	F	F	Severely leaning
7	<i>Ilex rotunda</i>	鐵冬青	7	300	5	F	F	Rootball close to Tree No. 8
7A	<i>Camellia</i> spp.	山茶	7	100	4	T	T	
7B	<i>Camellia</i> spp.	山茶	7	100	4	T	T	
8	<i>Ilex rotunda</i>	鐵冬青	12	380	8	F	F	Rootball close to Tree No. 7
9	<i>Leucaena leucocephala</i>	銀合歡	12	360	8	F	F	Covered by climber / severely leaning / uproot/ invasive species
10	<i>Glochidion lanceolarium</i>	艾膠算盤子	6	190	6	F	F	Bark crack / cross branches
11	<i>Ficus hispida</i>	對葉榕	4	160	4	F	F	Not Found on site
12	<i>Ficus hispida</i>	對葉榕	5	170	5	F	F	Not Found on site
13	<i>Ficus microcarpa</i>	細葉榕	13	350	12	--	F	Exposed roots/ codominant trunks
14	<i>Macaranga tanarius</i> var. <i>tomentosa</i>	血桐	8	220	6	F	F	Cross branches / leaning
15	<i>Macaranga tanarius</i> var. <i>tomentosa</i>	血桐	8	200	6	F	F	Leaning
16	<i>Acacia confusa</i>	台灣相思	20	550	15	F	F	Large broken branch / bark crack / codominant trunks / fungal fruiting bodies/ dieback twigs
17	<i>Macaranga tanarius</i> var. <i>tomentosa</i>	血桐	6	180	6	F	F	Bark crack / severely leaning
18	<i>Ficus variegata</i>	青果榕	12	200	6	F	F	Leaning
19	<i>Macaranga tanarius</i> var. <i>tomentosa</i>	血桐	8	310	6	F	F	Broken branch / covered by climber / dead branch
20	Dead tree	死樹	-	-	-	F(D)	F(D)	Not Found on site
21	<i>Ficus hispida</i>	對葉榕	7	220	7	F	F	Not Found on site
22	<i>Ficus hispida</i>	對葉榕	8	360	8	F	F	Not Found on site
23	<i>Ficus hispida</i>	對葉榕	6	130	5	F	F	Not Found on site
26	<i>Litchi chinensis</i>	荔枝	13	350	8	F	F	Cavity / dead branch
27	<i>Litchi chinensis</i>	荔枝	12	410	10	F	F	Dead branch / leaning
30	<i>Ficus hispida</i>	對葉榕	8	180	7	F	F	Dead branches

Tree No.	Species		Tree Size			Proposed Treatment		Remarks ¹ (Old and Valuable Tree (OVT), potentially registrable OVT, rare species, protected species, ecological and historical significance, etc.)
	Scientific Name	Chinese Name	Height (m)	DBH ² (mm)	Crown Spread (m)	In Approved S12A Application by TBP on 28/10/2022 (<u>Retain</u> / <u>Transplant</u> / <u>Fell</u> / <u>Fell(Dead)</u>)	Current Treatment (<u>Retain</u> / <u>Transplant</u> / <u>Fell</u> / <u>Fell(Dead)</u>)	
31	<i>Macaranga tanarius</i> var. <i>tomentosa</i>	血桐	7	120	4	F	F	Covered by climber / leaning
32	<i>Macaranga tanarius</i> var. <i>tomentosa</i>	血桐	13	310	8	F	F	Not Found on site
33	<i>Macaranga tanarius</i> var. <i>tomentosa</i>	血桐	8	130	8	F	F	Not Found on site
34	<i>Litchi chinensis</i>	荔枝	12	470	15	F	F	Cavity / covered by climber / dead branch
35	<i>Ficus microcarpa</i>	細葉榕	15	800	10	R	R	Covered by climber / dead branch / leaning
36	<i>Macaranga tanarius</i> var. <i>tomentosa</i>	血桐	5	200	6	F	F	Covered by climber / decay / leaning
37	<i>Macaranga tanarius</i> var. <i>tomentosa</i>	血桐	12	210	6	F	F	Covered by climber / exposed root
38	<i>Mangifera indica</i>	芒果	9	220	5	F	F	Covered by climber
39	<i>Macaranga tanarius</i> var. <i>tomentosa</i>	血桐	7	120	4	F	F	Bark crack / broken branch
40	Dead tree	死樹	-	-	-	F(D)	F(D)	Dead tree
41	<i>Macaranga tanarius</i> var. <i>tomentosa</i>	血桐	4	130	3	F	F	Bark crack / broken branch / covered by climber / leaning
42	<i>Macaranga tanarius</i> var. <i>tomentosa</i>	血桐	6	170	4	F	F	Broken branch / covered by climber / dead branch
43	<i>Leucaena leucocephala</i>	銀合歡	8	100	3	F	F	Not Found on site
44	Dead tree	死樹	-	-	-	F(D)	F(D)	Not Found on site
45	<i>Sterculia lanceolata</i>	假蘋婆	7	100	4	F	F	Not Found on site
46	<i>Leucaena leucocephala</i>	銀合歡	7	95	4	F	F	Not Found on site
47	<i>Sterculia lanceolata</i>	假蘋婆	8	110	3	F	F	Not Found on site
48	<i>Celtis sinensis</i>	朴樹	11	320	10	R	F	Dead by natural deterioration
49	<i>Leucaena leucocephala</i>	銀合歡	13	150	10	R	F	Dead by natural deterioration
50	<i>Bombax ceiba</i>	木棉	22	800	15	R	F	Dead by natural deterioration
51	<i>Celtis sinensis</i>	朴樹	16	280	5	R	F	Dead by natural deterioration
52	<i>Leucaena leucocephala</i>	銀合歡	9	130	3	F	F	Covered by climber / dead branch/ invasive species
53	<i>Macaranga tanarius</i> var. <i>tomentosa</i>	血桐	9	320	9	F	F	Leaning
54	<i>Macaranga tanarius</i> var. <i>tomentosa</i>	血桐	13	280	8	F	F	Leaning
55	<i>Macaranga tanarius</i> var. <i>tomentosa</i>	血桐	18	340	12	F	F	Fallen
56	<i>Macaranga tanarius</i> var. <i>tomentosa</i>	血桐	4	180	5	F	F	Fallen
57	<i>Celtis sinensis</i>	朴樹	16	320	8	R	R	
58	<i>Macaranga tanarius</i> var. <i>tomentosa</i>	血桐	7	180	4	F	F	Broken branch / dead branch / leaning
59	<i>Macaranga tanarius</i> var. <i>tomentosa</i>	血桐	4	240	7	F	F	Leaning
60	<i>Macaranga tanarius</i> var. <i>tomentosa</i>	血桐	7	170	5	F	F	Covered by climber / leaning

Tree No.	Species		Tree Size			Proposed Treatment		Remarks ¹ (Old and Valuable Tree (OVT), potentially registrable OVT, rare species, protected species, ecological and historical significance, etc.)
	Scientific Name	Chinese Name	Height (m)	DBH ² (mm)	Crown Spread (m)	In Approved S12A Application by TBP on 28/10/2022 (<u>Retain</u> / <u>Transplant</u> / <u>Fell</u> / <u>Fell(Dead)</u>)	Current Treatment (<u>Retain</u> / <u>Transplant</u> / <u>Fell</u> / <u>Fell(Dead)</u>)	
61	<i>Leucaena leucocephala</i>	銀合歡	7	140	2	F	F	Fallen
62	<i>Macaranga tanarius</i> var. <i>tomentosa</i>	血桐	5	170	6	F	F	Covered by climber
63	<i>Macaranga tanarius</i> var. <i>tomentosa</i>	血桐	7	180	5	F	F	Cavity / leaning
64	<i>Macaranga tanarius</i> var. <i>tomentosa</i>	血桐	4	180	5	F	F	Severely leaning
67	<i>Leucaena leucocephala</i>	銀合歡	8	330	4	F	F	Fallen
69	<i>Leucaena leucocephala</i>	銀合歡	20	260	8	F	F	Fallen
70	<i>Leucaena leucocephala</i>	銀合歡	15	230	5	F	F	Leaning / invasive species
71	<i>Leucaena leucocephala</i>	銀合歡	18	300	8	F	F	Cavity / leaning / invasive species
72	Dead tree	死樹	-	-	-	F(D)	F(D)	Dead tree
74	<i>Ficus microcarpa</i>	細葉榕	14	450	12	R	R	
75	<i>Ficus microcarpa</i>	細葉榕	14	300	8	R	R	Leaning
76	<i>Ficus microcarpa</i>	細葉榕	14	450	12	F	F	Broken branch / dead branch
77	<i>Ehretia acuminata</i>	厚殼樹	14	140	5	F	R	
78	<i>Ehretia acuminata</i>	厚殼樹	14	130	5	F	R	
79	<i>Ehretia acuminata</i>	厚殼樹	15	230	6	F	R	
80	<i>Ehretia acuminata</i>	厚殼樹	14	170	5	F	R	
81	<i>Ehretia acuminata</i>	厚殼樹	15	170	5	F	R	
82	<i>Ficus hispida</i>	對葉榕	6	130	4	F	F	Leaning
83	<i>Ficus hispida</i>	對葉榕	8	130	4	F	F	Leaning
84	<i>Ficus hispida</i>	對葉榕	8	220	6	F	F	Included bark
85	<i>Ficus hispida</i>	對葉榕	7	120	4	F	F	Leaning
86	<i>Delonix regia</i>	鳳凰木	14	350	10	F	F	Dead branch / exposed root
87	<i>Ficus microcarpa</i>	細葉榕	15	500	18	F	F	imbalanced form
88	<i>Ficus hispida</i>	對葉榕	7	160	5	F	F	Covered by climber
89	<i>Leucaena leucocephala</i>	銀合歡	6	180	6	F	F	Not Found on site
90	<i>Leucaena leucocephala</i>	銀合歡	8	210	5	F	F	Not Found on site
92	<i>Celtis sinensis</i>	朴樹	17	780	12	R	R	Crack
93	<i>Leucaena leucocephala</i>	銀合歡	7	170	6	F	F	Felled by LCSD's contractor
94	<i>Leucaena leucocephala</i>	銀合歡	12	330	7	F	F	Felled by LCSD's contractor
95	<i>Macaranga tanarius</i> var. <i>tomentosa</i>	血桐	6	330	8	F	F	Codominant trunks / leaning

Tree No.	Species		Tree Size			Proposed Treatment		Remarks ¹ (Old and Valuable Tree (OVT), potentially registrable OVT, rare species, protected species, ecological and historical significance, etc.)
	Scientific Name	Chinese Name	Height (m)	DBH ² (mm)	Crown Spread (m)	In Approved S12A Application by TBP on 28/10/2022 (Retain/Transplant/ Fell/ Fell(Dead))	Current Treatment (Retain/Transplant/ Fell/ Fell(Dead))	
96	<i>Leucaena leucocephala</i>	銀合歡	7	230	6	F	F	Felled by LCSD's contractor
97	Dead tree	死樹	-	-	-	F(D)	F(D)	Felled by LCSD's contractor
98	<i>Leucaena leucocephala</i>	銀合歡	2	200	3	F	F	Felled by LCSD's contractor
99	<i>Leucaena leucocephala</i>	銀合歡	7	170	7	F	F	Felled by LCSD's contractor
100	<i>Leucaena leucocephala</i>	銀合歡	5	160	4	F	F	Felled by LCSD's contractor
101	<i>Leucaena leucocephala</i>	銀合歡	4	190	4	F	F	Felled by LCSD's contractor
102	Dead tree	死樹	-	-	-	F(D)	F(D)	Not Found on site
103	<i>Erythrina variegata</i>	刺桐	8	320	5	F	F	Covered by climber
104	<i>Litsea monopetala</i>	假柿樹	2	190	2	F	F	Felled by LCSD's contractor
105	Dead tree	死樹	-	-	-	F(D)	F(D)	Felled by LCSD's contractor
105A	<i>Ficus hispida</i>	對葉榕	5	100	3	F	F	Dead by natural deterioration
106	<i>Litsea monopetala</i>	假柿樹	14	240	8	F	F	
107	<i>Melia azedarach</i>	苦楝	16	330	7	F	F	Covered by climber
108	<i>Bauhinia purpurea</i>	紅花羊蹄甲	8	150	4	F	F	Cavity / decay
109	<i>Bauhinia purpurea</i>	紅花羊蹄甲	9	180	5	F	F	Cavity / decay
110	<i>Melia azedarach</i>	苦楝	18	360	12	F	F	Broken branch
111	<i>Celtis sinensis</i>	朴樹	8	260	7	F	F	Cavity / decay / leaning
112	<i>Melia azedarach</i>	苦楝	18	290	7	F	F	
113	<i>Celtis sinensis</i>	朴樹	9	260	6	F	F	Felled by LCSD's contractor
114	<i>Bauhinia purpurea</i>	紅花羊蹄甲	11	270	6	F	F	Broken branch / dead branch
115	<i>Bauhinia purpurea</i>	紅花羊蹄甲	8	310	5	F	F	Broken branch / covered by climber / dead branch
116	<i>Leucaena leucocephala</i>	銀合歡	15	290	8	F	F	Felled by LCSD's contractor
117	<i>Leucaena leucocephala</i>	銀合歡	12	210	4	F	F	Felled by LCSD's contractor
118	<i>Leucaena leucocephala</i>	銀合歡	7	210	3	F	F	Felled by LCSD's contractor
119	<i>Ficus hispida</i>	對葉榕	5	250	5	F	F	Felled by LCSD's contractor
120	<i>Leucaena leucocephala</i>	銀合歡	11	260	6	F	F	Not Found on site
121	<i>Macaranga tanarius</i> var. <i>tomentosa</i>	血桐	5	230	6	F	F	Bark crack / covered by climber
122	<i>Macaranga tanarius</i> var. <i>tomentosa</i>	血桐	9	190	6	F	F	Leaning
123	<i>Macaranga tanarius</i> var. <i>tomentosa</i>	血桐	9	190	6	F	F	
124	<i>Macaranga tanarius</i> var. <i>tomentosa</i>	血桐	5	150	4	F	F	Broken branch / leaning

Tree No.	Species		Tree Size			Proposed Treatment		Remarks ¹ (Old and Valuable Tree (OVT), potentially registrable OVT, rare species, protected species, ecological and historical significance, etc.)
	Scientific Name	Chinese Name	Height (m)	DBH ² (mm)	Crown Spread (m)	In Approved S12A Application by TBP on 28/10/2022 (Retain/Transplant/ Fell/ Fell(Dead))	Current Treatment (Retain/Transplant/ Fell/ Fell(Dead))	
125	<i>Leucaena leucocephala</i>	銀合歡	10	250	6	F	F	Felled by LCSD's contractor
126	<i>Ficus hispida</i>	對葉榕	8	180	4	F	F	Felled by LCSD's contractor
127	<i>Macaranga tanarius</i> var. <i>tomentosa</i>	血桐	5	140	6	F	F	Covered by climber / leaning
128	<i>Leucaena leucocephala</i>	銀合歡	6	280	3	F	F	Felled by LCSD's contractor
128A	<i>Macaranga tanarius</i> var. <i>tomentosa</i>	血桐	3	100	2	F	F	broken branch / covered by climber / leaning
129	<i>Leucaena leucocephala</i>	銀合歡	9	350	10	F	F	Felled by LCSD's contractor
130	<i>Leucaena leucocephala</i>	銀合歡	5	200	5	F	F	Not Found on site
131	<i>Ficus hispida</i>	對葉榕	7	210	5	F	F	Felled by LCSD's contractor
132	Dead tree	死樹	-	-	-	F(D)	F(D)	Felled by LCSD's contractor
133	<i>Leucaena leucocephala</i>	銀合歡	8	160	4	F	F	Felled by LCSD's contractor
134	<i>Bauhinia purpurea</i>	紅花羊蹄甲	9	300	10	F	F	Felled by LCSD's contractor
135	<i>Leucaena leucocephala</i>	銀合歡	8	180	4	F	F	Felled by LCSD's contractor
136	<i>Leucaena leucocephala</i>	銀合歡	8	190	3	F	F	Felled by LCSD's contractor
137	<i>Leucaena leucocephala</i>	銀合歡	17	320	7	F	F	Felled by LCSD's contractor
138	<i>Macaranga tanarius</i> var. <i>tomentosa</i>	血桐	7	170	5	F	F	Fallen
139	<i>Leucaena leucocephala</i>	銀合歡	8	230	6	F	F	Felled by LCSD's contractor
140	<i>Leucaena leucocephala</i>	銀合歡	9	150	2	F	F	Felled by LCSD's contractor
141	<i>Leucaena leucocephala</i>	銀合歡	12	230	6	F	F	Felled by LCSD's contractor
142	<i>Leucaena leucocephala</i>	銀合歡	8	210	4	F	F	Felled by LCSD's contractor
143	<i>Celtis sinensis</i>	朴樹	11	210	8	F	F	Not Found on site
144	Dead tree	死樹	-	-	-	F(D)	F(D)	Felled by LCSD's contractor
145	<i>Macaranga tanarius</i> var. <i>tomentosa</i>	血桐	7	250	7	F	F	Not Found on site
146	<i>Celtis sinensis</i>	朴樹	8	200	7	F	F	Fallen
147	<i>Celtis sinensis</i>	朴樹	16	470	12	F	F	Fallen
148	<i>Celtis sinensis</i>	朴樹	5	300	6	F	F	Fallen
149	<i>Macaranga tanarius</i> var. <i>tomentosa</i>	血桐	9	250	8	F	F	Codominant trunks / leaning
150	<i>Macaranga tanarius</i> var. <i>tomentosa</i>	血桐	6	270	8	F	F	Broken branch / dead branch / leaning / multi-trunks
151	<i>Macaranga tanarius</i> var. <i>tomentosa</i>	血桐	10	320	9	F	F	Bark crack / leaning
152	<i>Litsea monopetala</i>	假柿樹	18	480	13	F	F	Severely leaning
153	<i>Celtis sinensis</i>	朴樹	16	430	10	F	F	Dead branches / covered by climber

Tree No.	Species		Tree Size			Proposed Treatment		Remarks ¹ (Old and Valuable Tree (OVT), potentially registrable OVT, rare species, protected species, ecological and historical significance, etc.)
	Scientific Name	Chinese Name	Height (m)	DBH ² (mm)	Crown Spread (m)	In Approved S12A Application by TBP on 28/10/2022 (<u>Retain</u> / <u>Transplant</u> / <u>Fell</u> / <u>Fell(Dead)</u>)	Current Treatment (<u>Retain</u> / <u>Transplant</u> / <u>Fell</u> / <u>Fell(Dead)</u>)	
154	<i>Celtis sinensis</i>	朴樹	9	300	7	F	F	Dead by natural deterioration/ broken main trunk
155	<i>Celtis sinensis</i>	朴樹	13	300	9	F	F	Covered by climber
157	<i>Aleurites moluccana</i>	石栗	17	540	10	F	F	Multi-trunks
158	Dead tree	死樹	-	-	-	F(D)	F(D)	Not Found on site
160	<i>Melaleuca cajuputi</i> subsp. <i>cumingiana</i>	白千層	9	220	5	F	F	
161	<i>Ficus variegata</i>	青果榕	7	220	2	F	F	Not Found on site
162	<i>Macaranga tanarius</i> var. <i>tomentosa</i>	血桐	6	160	5	F	F	Covered by climber / multi-trunks / leaning
163	<i>Macaranga tanarius</i> var. <i>tomentosa</i>	血桐	9	190	8	F	F	Leaning
163A	<i>Macaranga tanarius</i> var. <i>tomentosa</i>	血桐	4	160	3	F	F	Bark crack / severely leaning
164	<i>Macaranga tanarius</i> var. <i>tomentosa</i>	血桐	7	180	7	F	F	Covered by climber / leaning
165	<i>Leucaena leucocephala</i>	銀合歡	7	190	6	F	F	Fallen / covered by climber / dead branch/ invasive species
166	<i>Leucaena leucocephala</i>	銀合歡	9	330	7	F	F	Dead by natural deterioration
167	Dead tree	死樹	-	-	-	F(D)	F(D)	Dead tree
168	<i>Aleurites moluccana</i>	石栗	19	250	6	F	F	
169	<i>Litsea monopetala</i>	假柿樹	16	180	5	F	F	Covered by climber / cross branches
170	<i>Leucaena leucocephala</i>	銀合歡	9	140	4	F	F	Invasive species
171	<i>Macaranga tanarius</i> var. <i>tomentosa</i>	血桐	10	280	6	F	F	Multi-trunks / included bark
172	<i>Leucaena leucocephala</i>	銀合歡	7	180	3	F	F	Felled by LCSD's contractor
173	<i>Leucaena leucocephala</i>	銀合歡	11	210	6	F	F	Felled by LCSD's contractor
174	<i>Leucaena leucocephala</i>	銀合歡	10	280	5	F	F	Felled by LCSD's contractor
175	Dead tree	死樹	-	-	-	F(D)	F(D)	Felled by LCSD's contractor
176	Dead tree	死樹	-	-	-	F(D)	F(D)	Felled by LCSD's contractor
177	<i>Macaranga tanarius</i> var. <i>tomentosa</i>	血桐	5	130	4	F	F	Exposed root
178	<i>Leucaena leucocephala</i>	銀合歡	7	180	5	F	F	Felled by LCSD's contractor
179	Dead tree	死樹	-	-	-	F(D)	F(D)	Felled by LCSD's contractor
180	<i>Bauhinia purpurea</i>	紅花羊蹄甲	8	100	2	F	F	Not Found on site
181	<i>Macaranga tanarius</i> var. <i>tomentosa</i>	血桐	5	130	3	F	F	Not Found on site
182	<i>Bauhinia purpurea</i>	紅花羊蹄甲	10	140	5	F	F	Felled by LCSD's contractor
183	<i>Macaranga tanarius</i> var. <i>tomentosa</i>	血桐	4	120	5	F	F	Felled by LCSD's contractor
184	Dead tree	死樹	-	-	-	F(D)	F(D)	Not Found on site

Tree No.	Species		Tree Size			Proposed Treatment		Remarks ¹ (Old and Valuable Tree (OVT), potentially registrable OVT, rare species, protected species, ecological and historical significance, etc.)
	Scientific Name	Chinese Name	Height (m)	DBH ² (mm)	Crown Spread (m)	In Approved S12A Application by TBP on 28/10/2022 (Retain/Transplant/ <u>Fell</u> / <u>Fell</u> (Dead))	Current Treatment (<u>Retain</u> /Transplant/ <u>Fell</u> / <u>Fell</u> (Dead))	
185	Dead tree	死樹	-	-	-	F(D)	F(D)	Felled by LCSD's contractor
186	<i>Macaranga tanarius</i> var. <i>tomentosa</i>	血桐	6	150	5	F	F	Bark crack / crack
187	<i>Macaranga tanarius</i> var. <i>tomentosa</i>	血桐	6	170	5	F	F	Not Found on site
188	<i>Ficus hispida</i>	對葉榕	5	110	2	F	F	Dead by natural deterioration
189	<i>Macaranga tanarius</i> var. <i>tomentosa</i>	血桐	8	150	5	F	F	Leaning
190	<i>Ficus hispida</i>	對葉榕	7	180	4	F	F	Not Found on site
191	<i>Macaranga tanarius</i> var. <i>tomentosa</i>	血桐	5	110	2	F	F	Leaning
192	<i>Leucaena leucocephala</i>	銀合歡	9	150	4	F	F	Felled by LCSD's contractor
193	<i>Leucaena leucocephala</i>	銀合歡	7	160	4	F	F	Felled by LCSD's contractor
194	<i>Leucaena leucocephala</i>	銀合歡	9	110	2	F	F	Felled by LCSD's contractor
195	<i>Leucaena leucocephala</i>	銀合歡	9	170	4	F	F	Felled by LCSD's contractor
196	<i>Leucaena leucocephala</i>	銀合歡	7	170	4	F	F	Felled by LCSD's contractor
197	<i>Leucaena leucocephala</i>	銀合歡	9	130	3	F	F	Codominant trunks / leaning / uproot/ invasive species
198	<i>Macaranga tanarius</i> var. <i>tomentosa</i>	血桐	5	200	5	F	F	Bark crack / leaning / multi-trunks
199	<i>Macaranga tanarius</i> var. <i>tomentosa</i>	血桐	5	120	4	F	F	
200	<i>Leucaena leucocephala</i>	銀合歡	3	100	1	F	F	Not Found on site
201	<i>Leucaena leucocephala</i>	銀合歡	9	160	4	F	F	Felled by LCSD's contractor
202	<i>Leucaena leucocephala</i>	銀合歡	9	100	4	F	F	Not Found on site
203	<i>Leucaena leucocephala</i>	銀合歡	6	100	3	F	F	Not Found on site
204	<i>Leucaena leucocephala</i>	銀合歡	8	120	5	F	F	Not Found on site
205	<i>Leucaena leucocephala</i>	銀合歡	5	150	4	F	F	Cross branches / leaning/ invasive species
206	<i>Leucaena leucocephala</i>	銀合歡	7	190	4	F	F	Fallen
207	<i>Leucaena leucocephala</i>	銀合歡	10	150	4	F	F	Leaning / invasive species
208	<i>Leucaena leucocephala</i>	銀合歡	4	130	2	F	F	Fallen
209	<i>Leucaena leucocephala</i>	銀合歡	4	120	6	F	F	Fallen
210	<i>Leucaena leucocephala</i>	銀合歡	7	130	6	F	F	Severely leaning / invasive species
211	<i>Leucaena leucocephala</i>	銀合歡	5	110	3	F	F	Leaning / invasive species
212	<i>Leucaena leucocephala</i>	銀合歡	3	110	1	F	F	Broken main trunk / invasive species
213	<i>Leucaena leucocephala</i>	銀合歡	6	140	4	F	F	Leaning / invasive species
214	<i>Macaranga tanarius</i> var. <i>tomentosa</i>	血桐	10	200	5	F	F	Codominant trunks with included bark

Tree No.	Species		Tree Size			Proposed Treatment		Remarks ¹ (Old and Valuable Tree (OVT), potentially registrable OVT, rare species, protected species, ecological and historical significance, etc.)
	Scientific Name	Chinese Name	Height (m)	DBH ² (mm)	Crown Spread (m)	In Approved S12A Application by TBP on 28/10/2022 (<u>Retain</u> / <u>Transplant</u> / <u>Fell</u> / <u>Fell(Dead)</u>)	Current Treatment (<u>Retain</u> / <u>Transplant</u> / <u>Fell</u> / <u>Fell(Dead)</u>)	
215	<i>Leucaena leucocephala</i>	銀合歡	8	150	5	F	F	Not Found on site
216	<i>Leucaena leucocephala</i>	銀合歡	4	110	3	F	F	Broken branch / invasive species
217	<i>Leucaena leucocephala</i>	銀合歡	7	160	3	F	F	Leaning / uproot / invasive species
218	<i>Leucaena leucocephala</i>	銀合歡	10	190	7	F	F	Cavity
219	<i>Leucaena leucocephala</i>	銀合歡	5	130	4	F	F	Leaning / invasive species
220	<i>Ficus hispida</i>	對葉榕	9	140	4	F	F	Covered by climber
222	<i>Leucaena leucocephala</i>	銀合歡	6	200	4	F	F	Codominant trunks / crack / leaning / invasive species
223	<i>Leucaena leucocephala</i>	銀合歡	8	120	2	F	F	Crack / invasive species
224	<i>Leucaena leucocephala</i>	銀合歡	8	180	2	F	F	Leaning / invasive species
225	<i>Leucaena leucocephala</i>	銀合歡	8	220	3	F	F	Leaning / invasive species
226	<i>Leucaena leucocephala</i>	銀合歡	8	130	3	F	F	Leaning / uproot / invasive species
227	<i>Leucaena leucocephala</i>	銀合歡	7	120	2	F	F	Leaning / uproot / invasive species
232	<i>Leucaena leucocephala</i>	銀合歡	8	130	2	F	F	Leaning / invasive species
233	<i>Leucaena leucocephala</i>	銀合歡	11	300	8	F	F	Leaning / uproot / invasive species
234	<i>Leucaena leucocephala</i>	銀合歡	3	130	2	F	F	Broken branch / dead branch / leaning / invasive species
234A	<i>Leucaena leucocephala</i>	銀合歡	5	110	3	F	F	Cavity / leaning / invasive species
235	<i>Leucaena leucocephala</i>	銀合歡	5	120	3	F	F	Decay / invasive species
236	<i>Bridelia tomentosa</i>	土蜜樹	5	100	2	F	F	Broken branch / dead branch / leaning
238	<i>Macaranga tanarius</i> var. <i>tomentosa</i>	血桐	3	100	2	F	F	Severely leaning
239	<i>Leucaena leucocephala</i>	銀合歡	4	150	4	F	F	Covered by climber / leaning / uproot / invasive species
240	<i>Leucaena leucocephala</i>	銀合歡	10	110	5	F	F	Invasive species
241	<i>Canarium album</i>	橄欖	-	-	-	F(D)	F	Rejuvenates from the broken trunk, poor in structure
242	<i>Macaranga tanarius</i> var. <i>tomentosa</i>	血桐	7	100	5	F	F	Severely leaning / trunk embedded into fence
243	<i>Macaranga tanarius</i> var. <i>tomentosa</i>	血桐	7	210	5	F	F	Bark crack / leaning
244	<i>Macaranga tanarius</i> var. <i>tomentosa</i>	血桐	5	180	4	F	F	Severely leaning
245	<i>Leucaena leucocephala</i>	銀合歡	7	170	5	F	F	Codominant trunks / covered by climber / leaning / invasive species
246	<i>Macaranga tanarius</i> var. <i>tomentosa</i>	血桐	6	130	5	F	F	
247	<i>Leucaena leucocephala</i>	銀合歡	4	110	2	F	F	Covered by climber / main trunk broken / leaning / invasive species
248	<i>Leucaena leucocephala</i>	銀合歡	8	120	2	F	F	Leaning / invasive species
249	<i>Litsea monopetala</i>	假柿樹	4	160	4	F	F	Leaning

Tree No.	Species		Tree Size			Proposed Treatment		Remarks ¹ (Old and Valuable Tree (OVT), potentially registrable OVT, rare species, protected species, ecological and historical significance, etc.)
	Scientific Name	Chinese Name	Height (m)	DBH ² (mm)	Crown Spread (m)	In Approved S12A Application by TBP on 28/10/2022 (Retain/Transplant/ Fell/ Fell(Dead))	Current Treatment (Retain/Transplant/ Fell/ Fell(Dead))	
250	<i>Macaranga tanarius</i> var. <i>tomentosa</i>	血桐	3	120	3	F	F	Covered by climber / leaning
251	<i>Macaranga tanarius</i> var. <i>tomentosa</i>	血桐	4	100	3	F	F	Exposed root / leaning
252	<i>Macaranga tanarius</i> var. <i>tomentosa</i>	血桐	8	100	4	F	F	Leaning
253	<i>Macaranga tanarius</i> var. <i>tomentosa</i>	血桐	6	110	4	F	F	Leaning
254	<i>Macaranga tanarius</i> var. <i>tomentosa</i>	血桐	5	140	4	F	F	Leaning
255	<i>Macaranga tanarius</i> var. <i>tomentosa</i>	血桐	4	170	3	F	F	Codominant trunks / leaning
256	<i>Macaranga tanarius</i> var. <i>tomentosa</i>	血桐	6	130	4	F	F	Crack
257	<i>Macaranga tanarius</i> var. <i>tomentosa</i>	血桐	5	130	5	F	F	Leaning
258	<i>Macaranga tanarius</i> var. <i>tomentosa</i>	血桐	7	140	5	F	F	Leaning
259	<i>Macaranga tanarius</i> var. <i>tomentosa</i>	血桐	8	170	6	F	F	Exposed root / severely leaning
260	<i>Macaranga tanarius</i> var. <i>tomentosa</i>	血桐	7	210	5	F	F	Bark crack / leaning
261	<i>Macaranga tanarius</i> var. <i>tomentosa</i>	血桐	4	120	5	F	F	Broken branch / leaning
262	<i>Macaranga tanarius</i> var. <i>tomentosa</i>	血桐	6	110	4	F	F	Leaning / trunk embedded into fence
263	<i>Macaranga tanarius</i> var. <i>tomentosa</i>	血桐	6	110	4	F	F	Severely leaning
264	<i>Macaranga tanarius</i> var. <i>tomentosa</i>	血桐	6	130	5	F	F	Covered by climber / leaning
265	<i>Leucaena leucocephala</i>	銀合歡	4	100	3	F	F	Fallen
266	<i>Leucaena leucocephala</i>	銀合歡	8	100	4	F	F	Crack / invasive species
267	<i>Leucaena leucocephala</i>	銀合歡	11	150	3	F	F	Crack / cross branches / exposed root / invasive species
268	<i>Leucaena leucocephala</i>	銀合歡	8	260	5	F	F	Cross branches / multi-trunks / exposed root / invasive species
269	<i>Leucaena leucocephala</i>	銀合歡	4	95	2	F	F	Fallen
270	<i>Leucaena leucocephala</i>	銀合歡	7	130	5	F	F	Exposed root / leaning / invasive species
271	<i>Leucaena leucocephala</i>	銀合歡	8	160	4	F	F	Fallen
272	<i>Leucaena leucocephala</i>	銀合歡	8	220	6	F	F	Leaning / invasive species
273	<i>Leucaena leucocephala</i>	銀合歡	8	170	6	F	F	Cross branches / invasive species
274	<i>Ficus hispida</i>	對葉榕	5	110	3	F	F	Not Found on site
275	<i>Morus alba</i>	桑	4	130	2	F	F	Leaning / covered by climber
276	<i>Bombax ceiba</i>	木棉	4	150	2	F	F	Leaning
277	<i>Macaranga tanarius</i> var. <i>tomentosa</i>	血桐	3	130	3	F	F	Covered by climber / severely leaning
278	<i>Bombax ceiba</i>	木棉	5	160	2	F	F	Bark crack
279	<i>Macaranga tanarius</i> var. <i>tomentosa</i>	血桐	5	200	7	F	F	Covered by climber / leaning

Tree No.	Species		Tree Size			Proposed Treatment		Remarks ¹ (Old and Valuable Tree (OVT), potentially registrable OVT, rare species, protected species, ecological and historical significance, etc.)
	Scientific Name	Chinese Name	Height (m)	DBH ² (mm)	Crown Spread (m)	In Approved S12A Application by TBP on 28/10/2022 (<u>R</u> etain/ <u>T</u> ransplant/ <u>F</u> ell/ <u>F</u> ell(<u>D</u> ead))	Current Treatment (<u>R</u> etain/ <u>T</u> ransplant/ <u>F</u> ell/ <u>F</u> ell(<u>D</u> ead))	
280	<i>Macaranga tanarius var. tomentosa</i>	血桐	5	210	5	F	F	Covered by climber / multi-trunks
280A	<i>Litsea monopetala</i>	假柿樹	10	130	6	F	--	Verified to be same tree as Tree No. 4
281	Dead tree	死樹	-	-	-	F(D)	F(D)	Not Found on site
D3	Dead tree	死樹	-	-	-	F(D)	F(D)	Not Found on site
D4	Dead tree	死樹	-	-	-	F(D)	F(D)	Not Found on site
D5	Dead tree	死樹	-	-	-	F(D)	F(D)	Not Found on site
D6	Dead tree	死樹	-	-	-	F(D)	F(D)	Not Found on site
D7	Dead tree	死樹	-	-	-	F(D)	F(D)	Not Found on site
D8	Dead tree	死樹	-	-	-	F(D)	F(D)	Not Found on site

Summary Table

	Number of Tree(s)
Tree to be Retained	11
Tree to be Transplanted	2
Tree to be Felled	239
DEAD Tree(s)	23
Total No. of Tree(s)	275

¹ Please state whether the OVT, potentially registrable OVT, trees of rare or protected species, trees with ecological and historical significance, etc. within and/or adjacent to the site is likely to be affected by the proposed development.

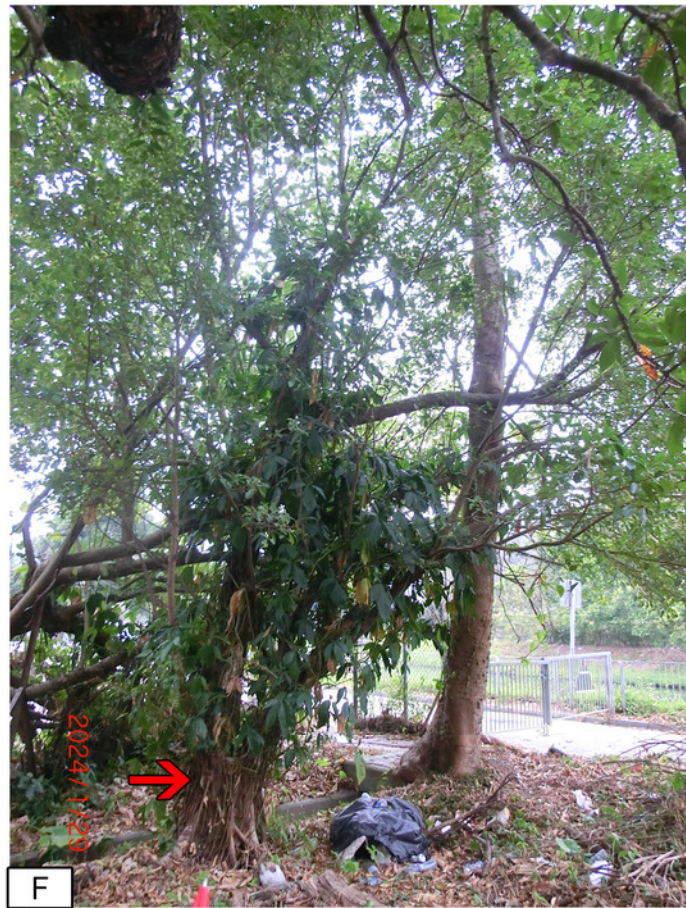
² DBH of a tree refers to its diameter at breast height (i.e. measured at 1.3m above ground level).

APPENDIX 2

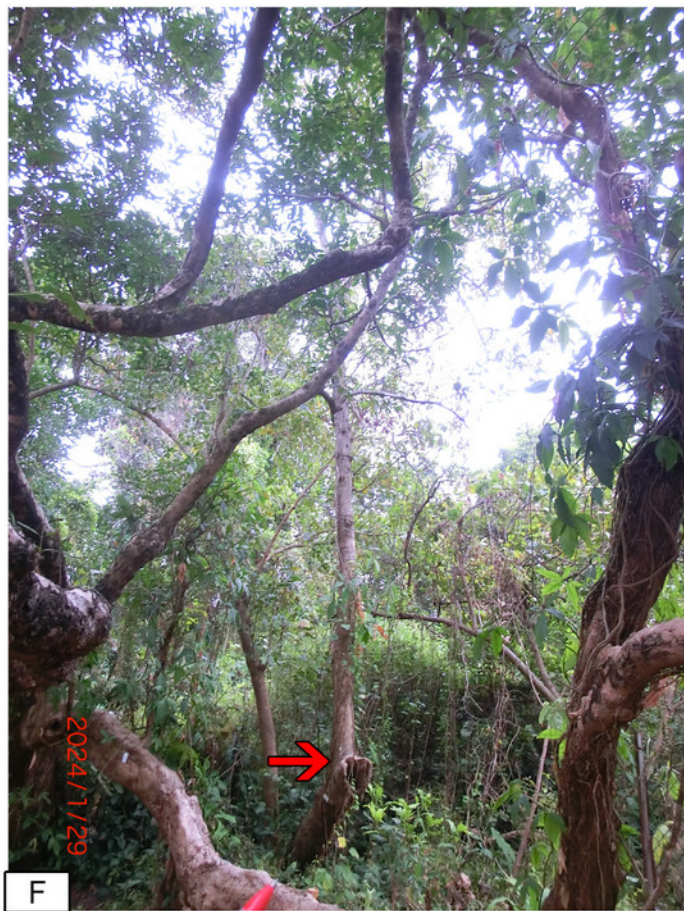
Photographic Record of Existing Trees



1



2



4



5

Tree Photographic Record

R-Retain T-Transplant F-Fell D-Dead Tree



6



7



7A



7B

Tree Photographic Record

R-Retain T-Transplant F-Fell D-Dead Tree



8



9



10

Tree Photographic Record

R-Retain T-Transplant F-Fell D-Dead Tree



13



14

Tree Photographic Record

R-Retain T-Transplant F-Fell D-Dead Tree



15



16



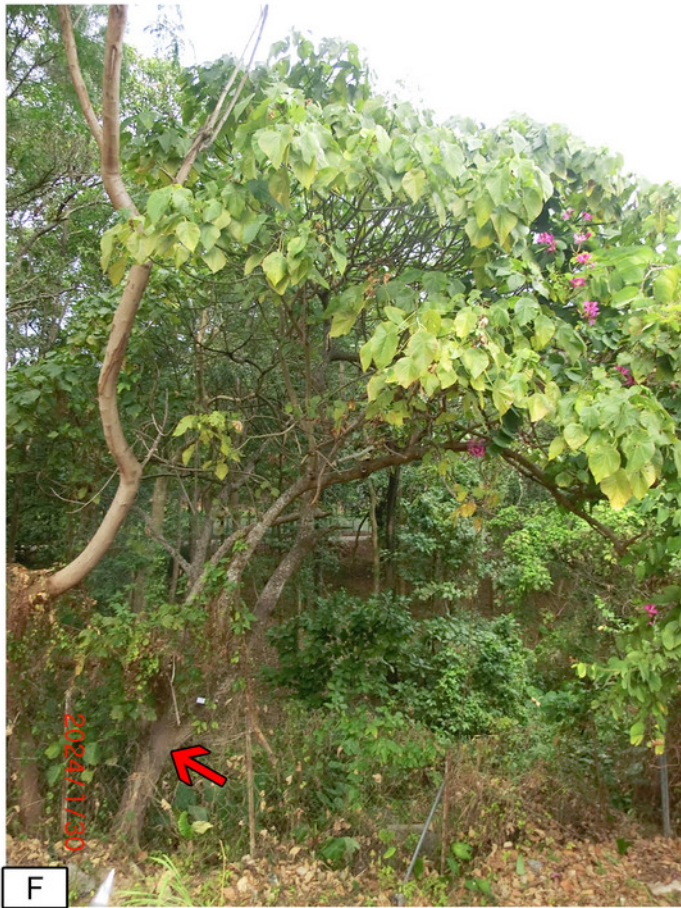
17



18

Tree Photographic Record

R-Retain T-Transplant F-Fell D-Dead Tree



19



26



27



30

Tree Photographic Record

R-Retain T-Transplant F-Fell D-Dead Tree



31



34



35



36

Tree Photographic Record

R-Retain T-Transplant F-Fell D-Dead Tree



37



38



39



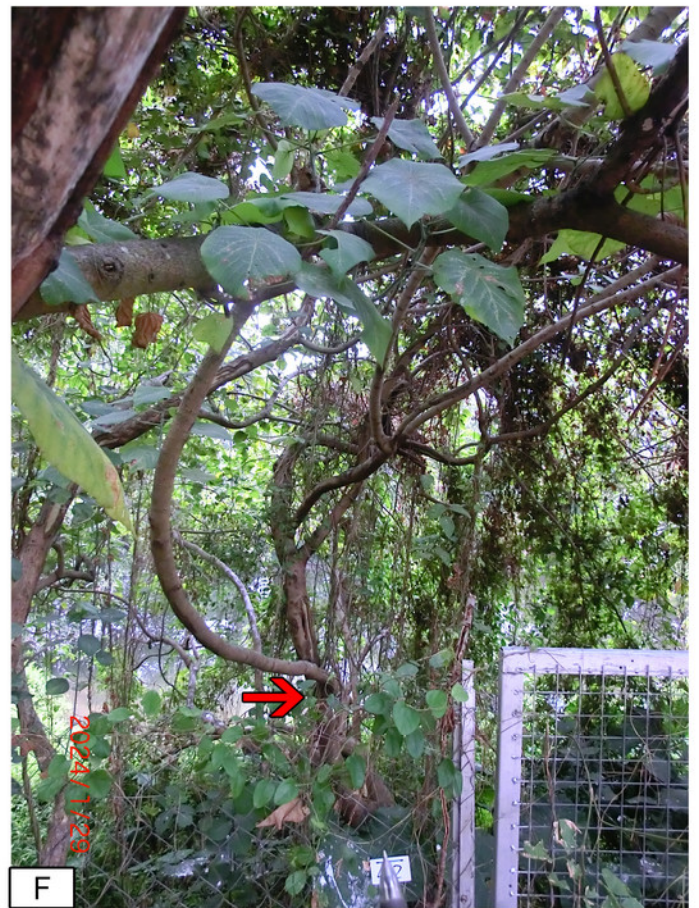
40

Tree Photographic Record

R-Retain T-Transplant F-Fell D-Dead Tree



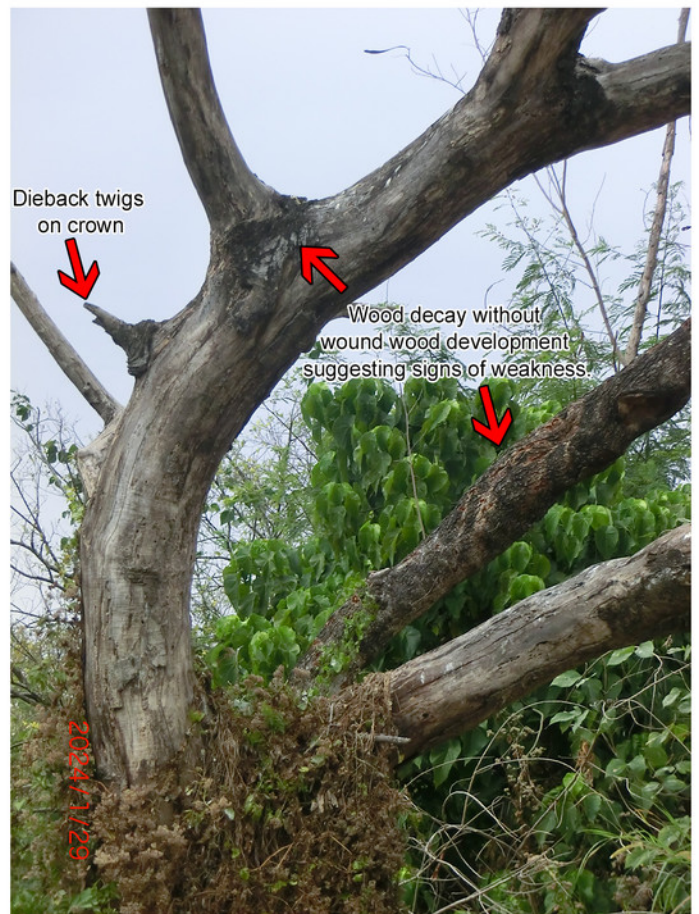
41



42



48



48

Tree Photographic Record

R-Retain T-Transplant F-Fell D-Dead Tree



49



50



50

Tree Photographic Record

R-Retain T-Transplant F-Fell D-Dead Tree



51



51



52



53

Tree Photographic Record

R-Retain T-Transplant F-Fell D-Dead Tree



54



55



56



57

Tree Photographic Record

R-Retain T-Transplant F-Fell D-Dead Tree



58



59



60



61

Tree Photographic Record

R-Retain T-Transplant F-Fell D-Dead Tree



62



63



64



67

Tree Photographic Record

R-Retain T-Transplant F-Fell D-Dead Tree



F

69



F

70



F

71



D

72

Tree Photographic Record

R-Retain T-Transplant F-Fell D-Dead Tree



74



75



76



77

Tree Photographic Record

R-Retain T-Transplant F-Fell D-Dead Tree



78



79



80



81

Tree Photographic Record

R-Retain T-Transplant F-Fell D-Dead Tree



82

83

84

85

Tree Photographic Record

R-Retain T-Transplant F-Fell D-Dead Tree



F

86



F

87



F

88

Tree Photographic Record

R-Retain T-Transplant F-Fell D-Dead Tree



92



95

Tree Photographic Record

R-Retain T-Transplant F-Fell D-Dead Tree



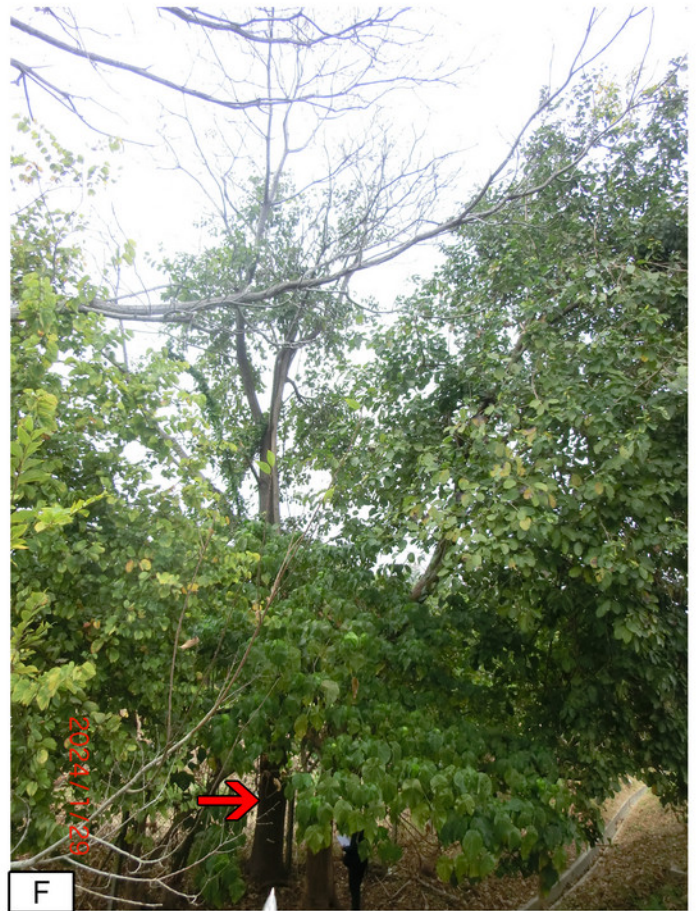
103



105A



106



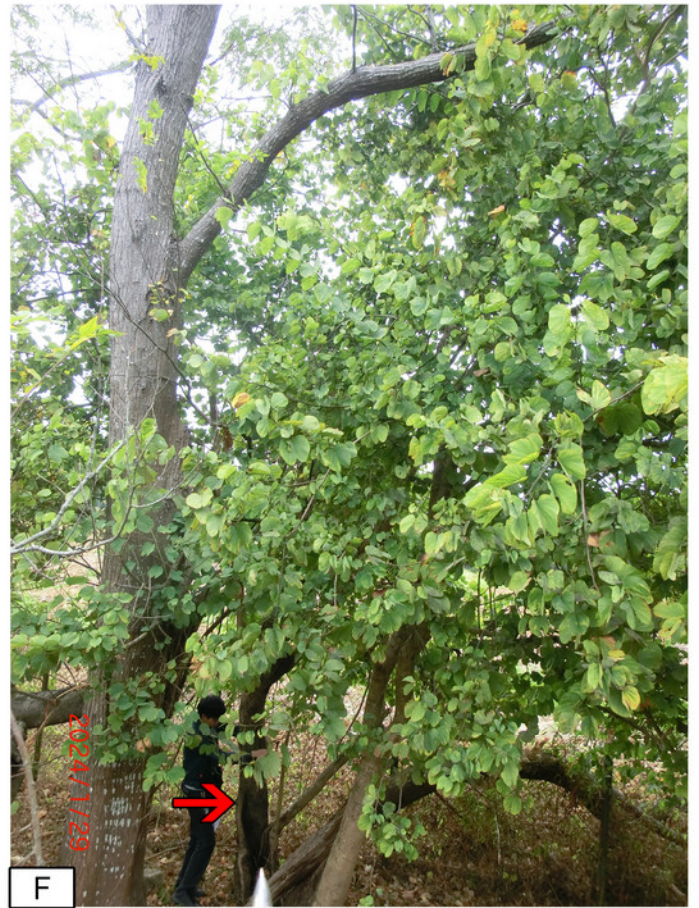
107

Tree Photographic Record

R-Retain T-Transplant F-Fell D-Dead Tree



108



109



110



111

Tree Photographic Record

R-Retain T-Transplant F-Fell D-Dead Tree



F

112



F

114



F

115

Tree Photographic Record

R-Retain T-Transplant F-Fell D-Dead Tree



121



122



123



124

Tree Photographic Record

R-Retain T-Transplant F-Fell D-Dead Tree



F

127



F

128A

Tree Photographic Record

R-Retain T-Transplant F-Fell D-Dead Tree



138

Tree Photographic Record	R-Retain T-Transplant F-Fell D-Dead Tree	



F

146



F

147



F

148



F

149

Tree Photographic Record

R-Retain T-Transplant F-Fell D-Dead Tree



150



151



152



153

Tree Photographic Record

R-Retain T-Transplant F-Fell D-Dead Tree



154



155



157



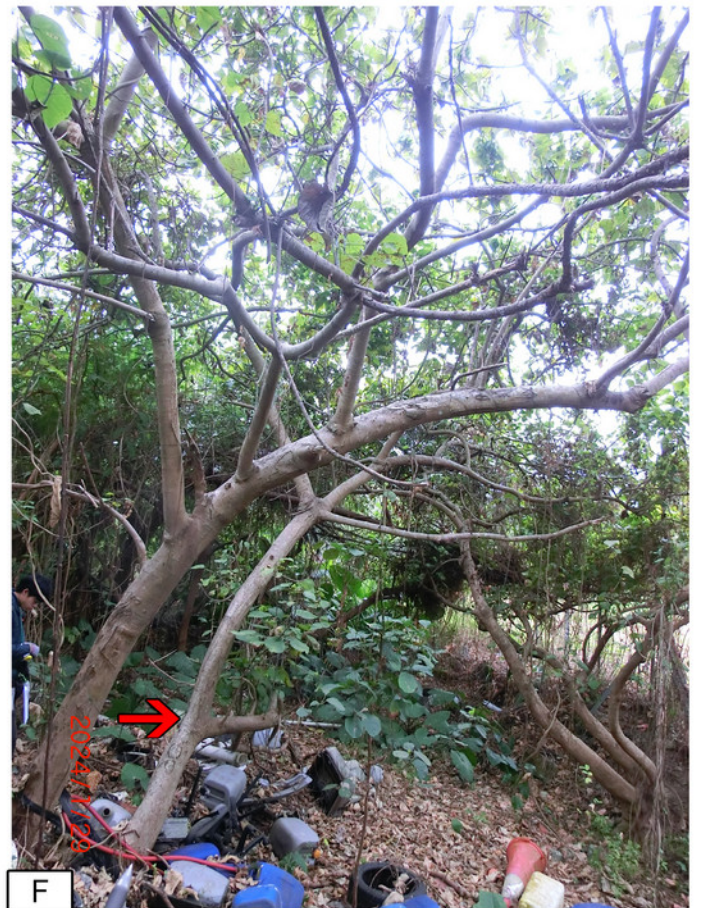
160

Tree Photographic Record

R-Retain T-Transplant F-Fell D-Dead Tree



162



163



163A



164

Tree Photographic Record

R-Retain T-Transplant F-Fell D-Dead Tree



165



166



167



168

Tree Photographic Record

R-Retain T-Transplant F-Fell D-Dead Tree



169



170



171



177

Tree Photographic Record

R-Retain T-Transplant F-Fell D-Dead Tree



186



188



189



191

Tree Photographic Record

R-Retain T-Transplant F-Fell D-Dead Tree



197



198



199

Tree Photographic Record

R-Retain T-Transplant F-Fell D-Dead Tree



205



206



207



208

Tree Photographic Record

R-Retain T-Transplant F-Fell D-Dead Tree



209



210



211



212

Tree Photographic Record

R-Retain T-Transplant F-Fell D-Dead Tree



213



214



216



217

Tree Photographic Record

R-Retain T-Transplant F-Fell D-Dead Tree



F

218



F

219



F

220



F

222

Tree Photographic Record

R-Retain T-Transplant F-Fell D-Dead Tree



F

223



F

224



F

225



F

226

Tree Photographic Record

R-Retain T-Transplant F-Fell D-Dead Tree



227



232



233



234

Tree Photographic Record

R-Retain T-Transplant F-Fell D-Dead Tree



234A



235



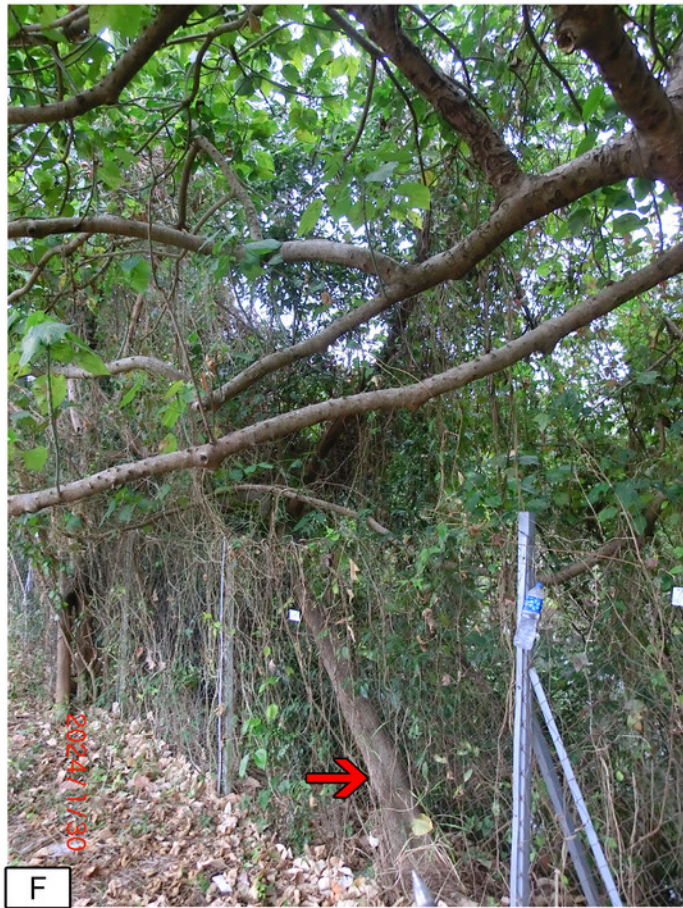
236



238

Tree Photographic Record

R-Retain T-Transplant F-Fell D-Dead Tree



239



240



241



242

Tree Photographic Record

R-Retain T-Transplant F-Fell D-Dead Tree



243



244



245



246

Tree Photographic Record

R-Retain T-Transplant F-Fell D-Dead Tree



247



248



249



250

Tree Photographic Record

R-Retain T-Transplant F-Fell D-Dead Tree



F

251



F

252



F

253

Tree Photographic Record

R-Retain T-Transplant F-Fell D-Dead Tree



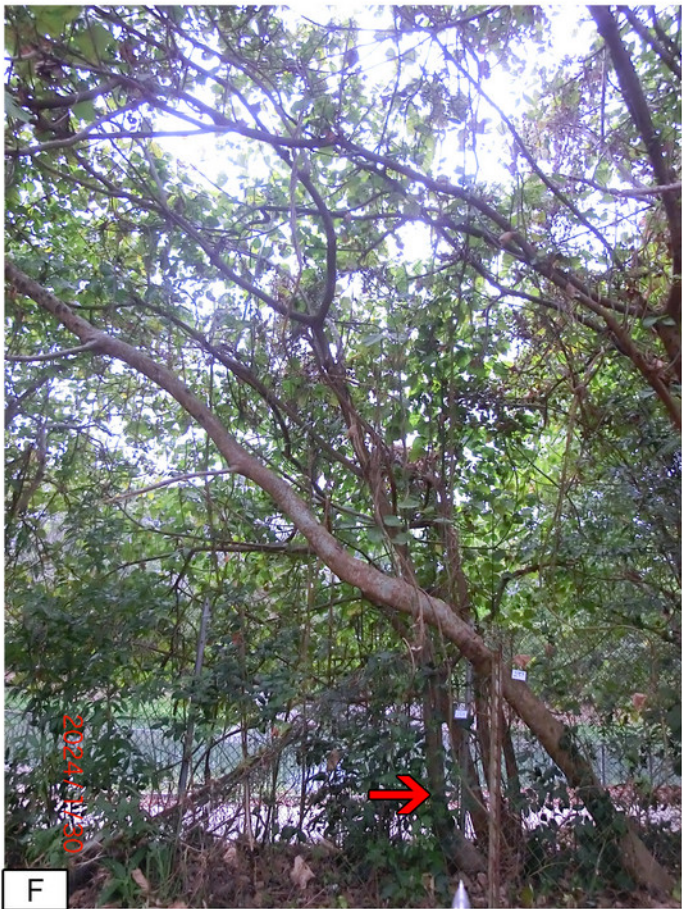
F

254



F

255



F

256



F

257

Tree Photographic Record

R-Retain T-Transplant F-Fell D-Dead Tree



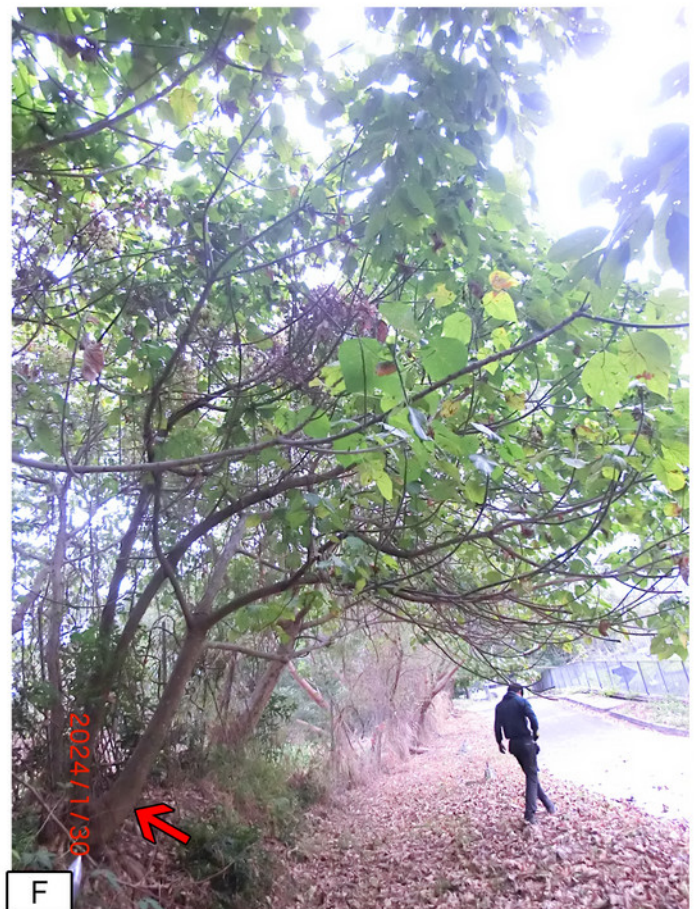
258



259



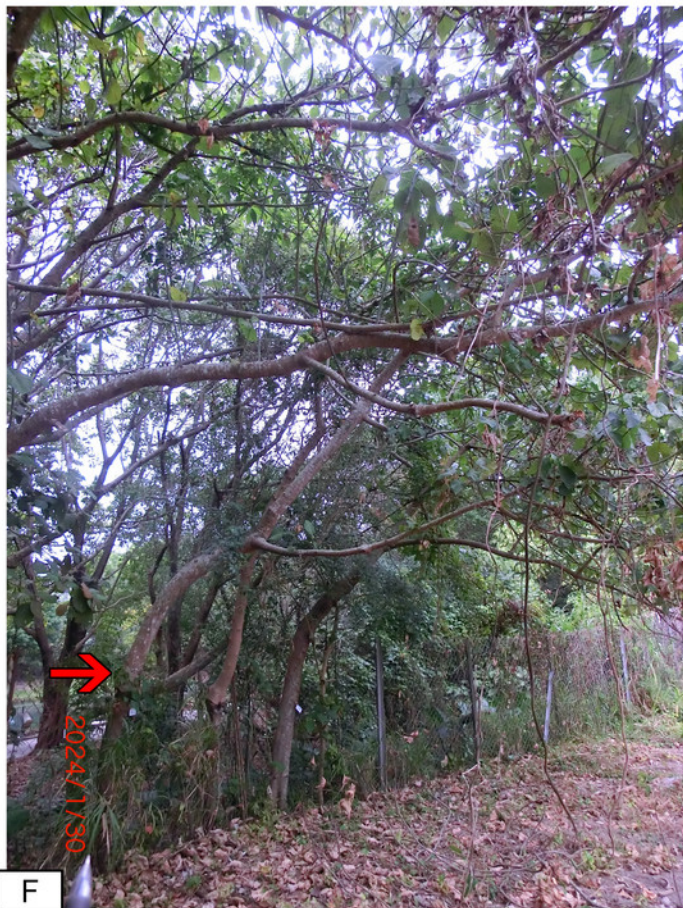
260



261

Tree Photographic Record

R-Retain T-Transplant F-Fell D-Dead Tree



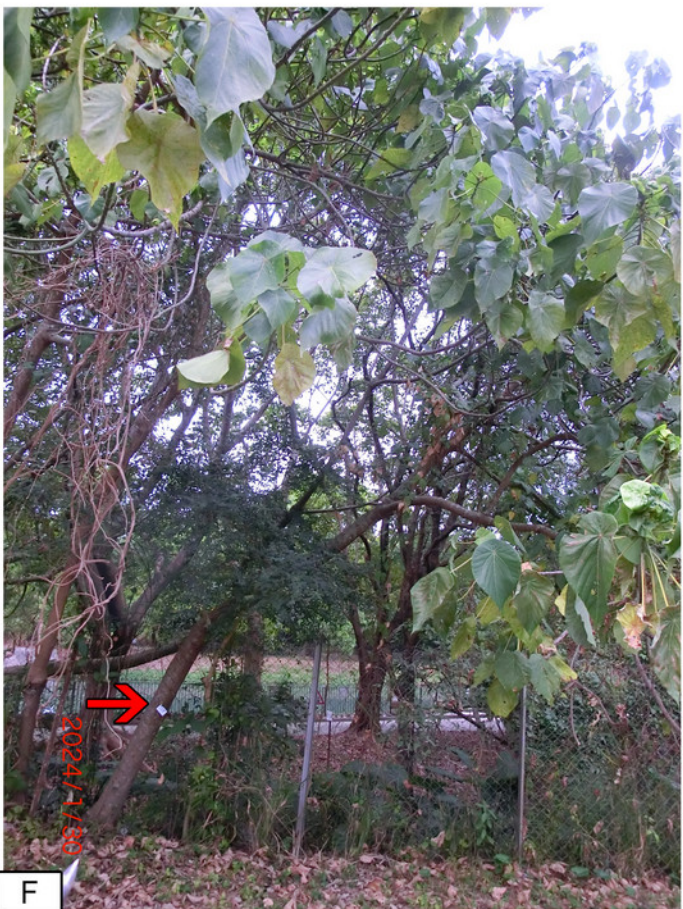
F

262



F

263



F

264



F

265

Tree Photographic Record

R-Retain T-Transplant F-Fell D-Dead Tree



266



267



268



269

Tree Photographic Record

R-Retain T-Transplant F-Fell D-Dead Tree



270



271



272



273

Tree Photographic Record

R-Retain T-Transplant F-Fell D-Dead Tree



F

275



F

276



F

277

Tree Photographic Record

R-Retain T-Transplant F-Fell D-Dead Tree



F

278



F

279



F

280

Tree Photographic Record

R-Retain T-Transplant F-Fell D-Dead Tree

APPENDIX 3

Tree Survey Plan



LEGEND:

EXISTING TREES SURVEYED
(252 Nos.)

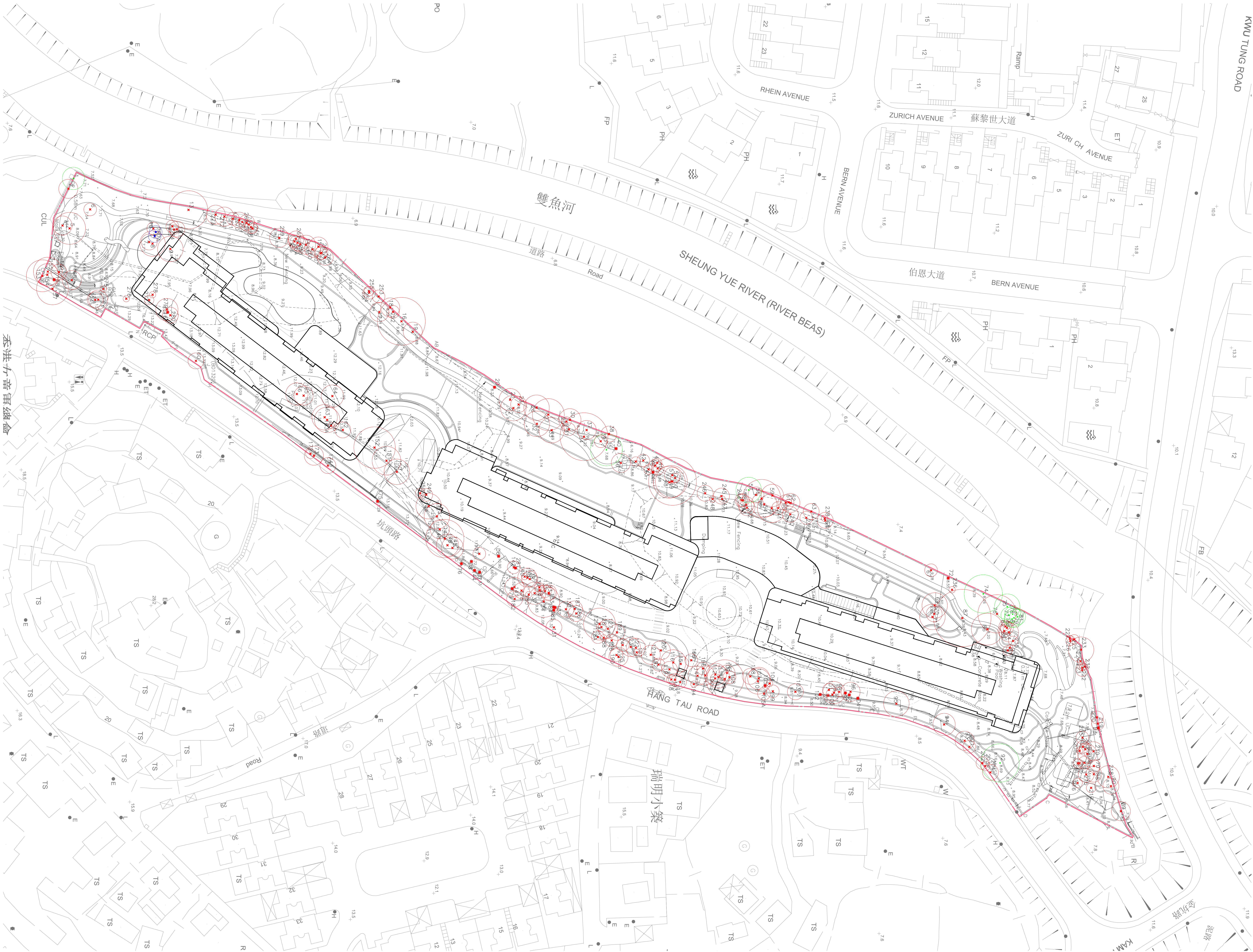
DEAD TREES
(23 Nos.)

APPLICATION SITE BOUNDARY

no.	description	date
REVISION		
Copyright of this drawing is reserved by AXXA GROUP LIMITED		
IT IS THE CONTRACTOR'S RESPONSIBILITY TO		
* use figured dimension in preference to scaling		
* verify all dimensions at the site		
* report all discrepancies to the landscape architect and agree before proceeding		
* determine location of all existing services prior to excavation		
This drawing shall not be used for construction purposes unless signed by Landscape Architect		
Date:		
Approval:		<div></div>
<div></div> <div>axxa group</div> <div>axxa group limited</div> <div>UNIT 301-02, 3/F PLAZA 228, No. 228 WAN CHAI ROAD, HONG KONG. 香港 灣仔 灣仔道 228號, PLAZA 228, 3樓 301-02室. T: (852) 2893 8586 F: (852) 2893 8997 E: ag@axxagroup.com.hk</div> <div>PROJECT:Section 16 Planning Application for Proposed Residential Development with Minor Relaxation of Plot Ratio Restriction at Lots 1027, 1029, 1030, 1034A, 1034B, 1039 (Part), 1040, 1042 RP, 1043 RP, 1044 RP (Part), 1045, 1047, 2233 (Part), 2251 SA RP, 2256 RP, 2315 (Part) and 2316 RP (Part) in D.D. 92 and Adjoining Government Land (New Lot to be known as Lot 2644 in D.D. 92), Kwu Tung South, Sheung Shui, New Territories</div> <div>DRAWING TITLE:</div> <div>TREE SURVEY PLAN</div> <div><div>Scale: 1:400</div><div>Drawing No.: TSP-01</div><div>Date: NOV 2024</div><div>Design: CL</div><div>Drawn: LS</div><div>Checked: CL</div><div>Project No: 2013216</div><div>CAD Ref.: 2013216-S16-2024-TSP-01</div><div>REV.</div></div>		

APPENDIX 4

Tree Treatment Plan



LEGEND:

APPLICATION SITE BOUNDARY

EXTENT OF BASEMENT CARPARK

TREES PROPOSED TO BE RETAINED
(11 Nos.)

TREES PROPOSED TO BE TRANSPLANTED
(2 Nos.)

TREES PROPOSED TO BE FELLED
(239 Nos.)

DEAD TREES
(23 Nos.)

B	GENERAL REVISION	04/06/25
	A GENERAL REVISION	10/03/25
no.	description	date

REVISION

Copyright of this drawing is reserved by
AXXA GROUP LIMITED

IT IS THE CONTRACTOR'S RESPONSIBILITY TO

* use figured dimension in preference to scaling

* verify all dimensions at the site

* report all discrepancies to the landscape architect and agree before proceeding

* determine location of all existing services prior to excavation

This drawing shall not be used for construction purposes unless signed by Landscape Architect

Date:

Approval:

axxa group

axxa group limited

UNIT 301—02, 3/F PLAZA 228,
No. 228 WAN CHAI ROAD, HONG KONG.
香港 灣仔 灣仔道 228號,
PLAZA 228, 3樓 301—02室.
T: (852) 2893 8586 F: (852) 2893 8997
E: ag@axxagroup.com.hk

PROJECT:Section 16 Planning Application for Proposed Residential Development with Minor Relaxation of Plot Ratio Restriction at Lots 1027, 1029, 1030, 1034A, 1034B, 1039 (Part), 1040, 1042 RP, 1043 RP, 1044 RP (Part), 1045, 1047, 2233 (Part), 2251 SA RP, 2256 RP, 2315 (Part) and 2316 RP (Part) in D.D. 92 and Adjoining Government Land (New Lot to be known as Lot 2644 in D.D. 92), Kwu Tung South, Sheung Shui, New Territories

DRAWING TITLE:
TREE TREATMENT PLAN

Scale:	1:400	Drawing No.: TTP-01	REV. B
Date:	NOV 2024		
Design:	CL		
Drawn:	LS		
Checked:	CL		
Project No: 2013216			
CAD Ref.: 2013216-S16-2024-TTP-01			

APPENDIX 5

Tree Planting Plan

