

**Annex II**  
Tree Survey

# Tree Survey Report

**Date of Survey: 11<sup>th</sup> February 2025**

**Location:**

**Various Lots in D.D. 91 And D.D.100, Lin Tong Mei, Fanling,  
New Territories**

Prepared by:



---

Mak Ka Hei

Registered Arborist

Date: 11<sup>th</sup> February 2025

## **Table of contents**

|                              |   |
|------------------------------|---|
| 1. Introduction              | 3 |
| 2. Summary of Existing Trees | 4 |

### Appendix:

- I. Tree Survey Plan
- II. Tree Survey Schedule
- III. Photo Records

### Disclaimer:

The tree survey conducted indicates the condition of the surveyed trees at the time of inspection only. The assessments of amenity value, form, health and structural condition of the trees surveyed are based on visual inspection from the ground only. No aerial inspection, root digging or mapping, or diagnostic testing has been conducted as part of this survey. Wing Ho Yuen Landscaping Company Limited cannot accept responsibility for future failure or defects detected after the time of inspection of the trees surveyed in this report.

## **1. Introduction**

The survey conducted is to record all the existing trees in the tree survey boundary. The survey include tree species identification, tree tagging with durable labels, the measurements of overall tree height, Diameter at Breast Height (DBH), average crown spread, the evaluation on amenity value, form, health and structural conditions.

The tree survey was conducted on 11<sup>th</sup> February 2025. Plants with DBH less than 95mm were not recorded in the survey.

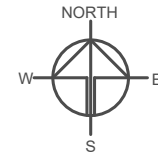
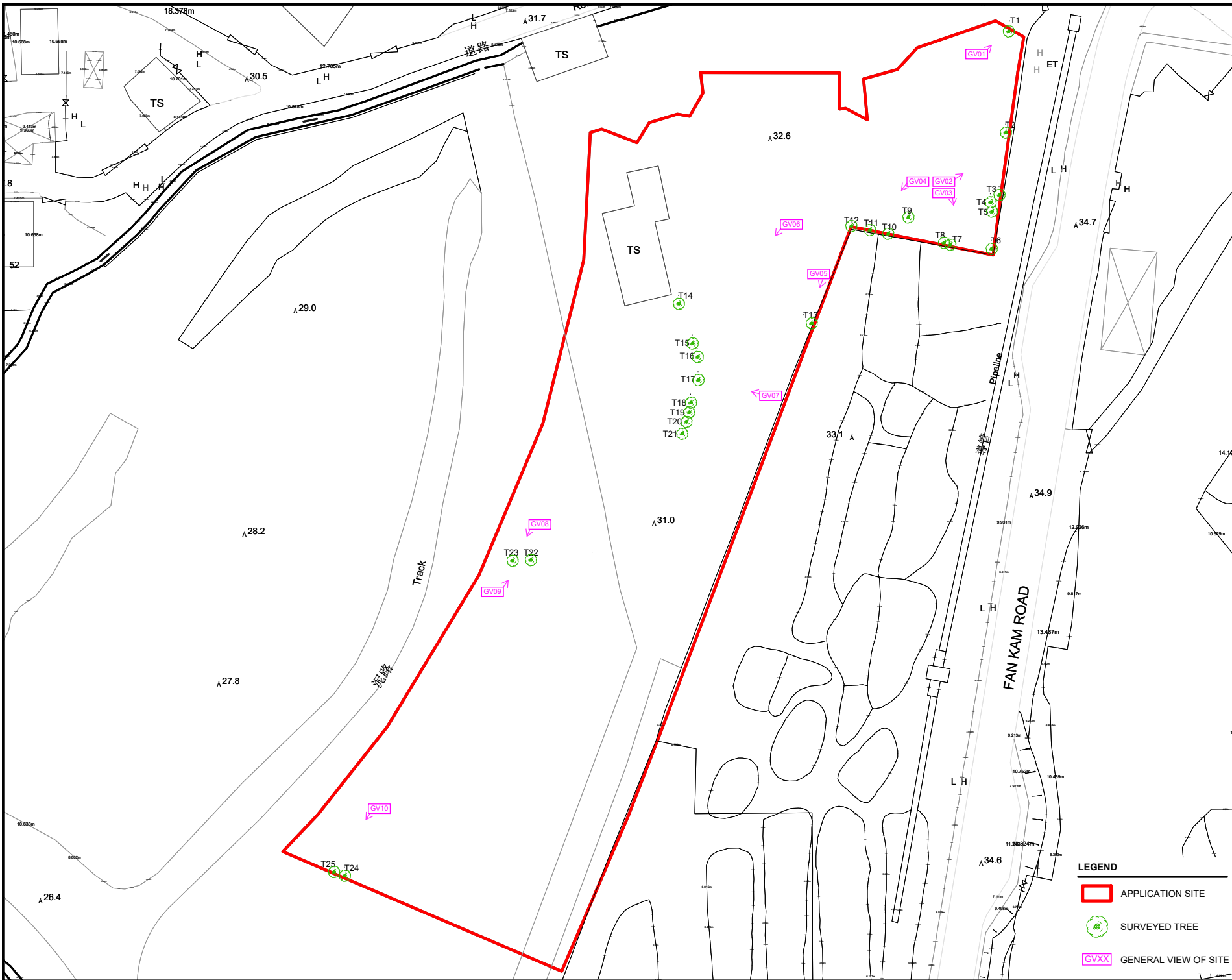
## **2. Summary of Existing Trees**

The surveyed site is located at Various Lots in D.D. 91 And D.D.100, Lin Tong Mei, Fanling, New Territories.

At the time of inspection on 11<sup>th</sup> February 2025, **25 nos.** trees were found within the Site. **2 nos.** dead trees were recorded in the surveyed area. Location of individual tree refers to Appendix I.

Details of tree conditions and photo records for individual tree are recorded in the Appendix II and Appendix III respectively.

# Appendix I – Tree Survey Plan



PLANNING CONSULTANT  
**R-Riches**  
 Property Consultants Ltd.

PROJECT  
 PROPOSED TEMPORARY  
 WAREHOUSE (EXCLUDING  
 DANGEROUS GOODS GODOWN)  
 WITH ANCILLARY FACILITIES  
 FOR A PERIOD OF 3 YEARS AND  
 ASSOCIATED FILLING OF LAND

SITE LOCATION  
 VARIOUS LOTS IN D.D. 91 AND  
 D.D.100, LIN TONG MEI,  
 FANLING, NEW TERRITORIES

|                                |                   |
|--------------------------------|-------------------|
| SCALE<br>NOT ON SCALE          |                   |
| DRAWN BY<br>KYU                | DATE<br>11.2.2025 |
| REVISED BY                     | DATE              |
| APPROVED BY                    | DATE              |
| DWG. TITLE<br>TREE SURVEY PLAN |                   |
| DWG NO.<br>TSP                 | VER.<br>0         |

- LEGEND**
- APPLICATION SITE
  - SURVEYED TREE
  - GVXX GENERAL VIEW OF SITE

## Appendix II –Tree Survey Schedule

**Tree Survey Schedule**

Location: Various Lots in D.D. 91 And D.D.100, Lin Tong Mei, Fanling, New Territories  
 Tree surveyor(s): Mak Ka Hei  
 Field Survey was conducted on: 11 February 2025



| Tree No. | Tree Species                             |              | Tree Size Measurements |          |                          | Amenity Value  | Form             | Health Condition       | Structural Condition | Suitability for Transplanting | Remarks  |
|----------|--|--------------|------------------------|----------|--------------------------|----------------|------------------|------------------------|----------------------|-------------------------------|--|
|          | Botanical Name                           | Chinese Name | Overall Height (m)     | DBH (mm) | Average Crown Spread (m) | High /Med /Low | Good /Fair /Poor | Good /Fair /Poor /Dead | Good /Fair /Poor     | High /Med /Low                |  |
| T1       | <i>Ficus microcarpa</i>                  | 榕樹(細葉榕)      | 14.0                   | 700      | 11.0                     | Low            | Fair             | Fair                   | Poor                 | Low                           | epiphytic plants, restricted root  |
| T2       | <i>Sterculia lanceolata</i>              | 假蘋婆          | 4.0                    | 120      | 2.0                      | Low            | Fair             | Fair                   | Poor                 | Low                           | leaning, wound on branch and trunk, epiphytic plants   |
| T3       | <i>Celtis sinensis</i>                   | 朴樹           | 7.0                    | 170      | 4.0                      | -              | -                | Dead                   | -                    | -                             | dead tree, epiphytic plants  |
| T4       | <i>Celtis sinensis</i>                   | 朴樹           | 13.0                   | 260      | 7.0                      | Low            | Fair             | Fair                   | Poor                 | Low                           | co-dominant stems, exposed dead root, wound on trunk, epiphytic plants   |
| T5       | <i>Chukrasia tabularis</i>               | 麻棟           | 13.0                   | 320      | 5.0                      | Low            | Fair             | Fair                   | Poor                 | Low                           | dead branch, wound on trunk, exposed dead root   |
| T6       | <i>Macaranga tanarius var. tomentosa</i> | 血桐           | 12.0                   | 226      | 7.0                      | Low            | Poor             | Poor                   | Poor                 | Low                           | multi-trunks, broken stub, abnormal leaf   |
| T7       | <i>Ficus benjamina</i>                   | 垂葉榕          | 11.5                   | 350      | 8.0                      | Low            | Fair             | Fair                   | Poor                 | Low                           | cross trunks, broken branch, metal bar embedded into trunk   |
| T8       | <i>Ficus benjamina</i>                   | 垂葉榕          | 9.0                    | 250      | 6.0                      | Low            | Fair             | Fair                   | Poor                 | Low                           | exposed dead root  |
| T9       | <i>Ficus variegata</i>                   | 青果榕          | 9.0                    | 240      | 9.0                      | Low            | Poor             | Fair                   | Poor                 | Low                           | wound on trunk, dead stub  |
| T10      | <i>Ficus benjamina</i>                   | 垂葉榕          | 12.0                   | 470      | 6.0                      | Low            | Fair             | Fair                   | Fair                 | Low                           | epiphytic plants   |
| T11      | <i>Ficus benjamina</i>                   | 垂葉榕          | 12.0                   | 420      | 7.0                      | Low            | Fair             | Fair                   | Poor                 | Low                           | cross branches   |
| T12      | <i>Ficus benjamina</i>                   | 垂葉榕          | 12.0                   | 450      | 7.0                      | Low            | Fair             | Poor                   | Fair                 | Low                           | dead stub  |
| T13      | <i>Ficus benjamina</i>                   | 垂葉榕          | 12.0                   | 480      | 9.0                      | Low            | Fair             | Poor                   | Poor                 | Low                           | broken trunk, hanger, wound on trunk with exposed deadwood   |
| T14      | <i>Ficus microcarpa</i>                  | 榕樹(細葉榕)      | 5.0                    | 380      | 4.0                      | Low            | Poor             | Poor                   | Poor                 | Low                           | dying tree, epicormics, dieback, topped  |
| T15      | <i>Ficus benjamina</i>                   | 垂葉榕          | 11.0                   | 500      | 6.0                      | Low            | Poor             | Poor                   | Poor                 | Low                           | dying tree, dieback, dead trunk, hanger, wound on trunk  |
| T16      | <i>Ficus benjamina</i>                   | 垂葉榕          | 11.0                   | 280      | 3.0                      | Low            | Poor             | Poor                   | Poor                 | Low                           | dying tree, dieback, dead trunk, wound on trunk with exposed deadwood, trace of termite  |
| T17      | <i>Ficus benjamina</i>                   | 垂葉榕          | 10.0                   | 490      | 6.0                      | Low            | Poor             | Poor                   | Poor                 | Low                           | dying tree, dieback, trace of termite, branch conflict with trunk of T18 and crown of T19, dead stub with fungal fruiting bodies |
| T18      | <i>Archontophoenix alexandrae</i>        | 假檳榔          | 10.0                   | 140      | 1.5                      | Low            | Fair             | Fair                   | Fair                 | Low                           | dead fronds, trunk conflict with branch of T17   |
| T19      | <i>Livistona chinensis</i>               | 蒲葵           | 10.0                   | 150      | 1.0                      | Low            | Fair             | Fair                   | Fair                 | Low                           | dead fronds, crown conflict with branch of T17   |
| T20      | <i>Livistona chinensis</i>               | 蒲葵           | 10.0                   | 160      | 1.0                      | Low            | Fair             | Fair                   | Fair                 | Low                           | dead fronds  |
| T21      | <i>Livistona chinensis</i>               | 蒲葵           | 10.0                   | 150      | 1.0                      | Low            | Fair             | Fair                   | Fair                 | Low                           | dead fronds  |
| T22      | <i>Ficus microcarpa</i>                  | 榕樹(細葉榕)      | 11.0                   | 410      | 5.0                      | Low            | Poor             | Poor                   | Poor                 | Low                           | dying tree, dieback, bird nest   |
| T23      | <i>Ficus microcarpa</i>                  | 榕樹(細葉榕)      | 11.0                   | 350      | 5.0                      | Low            | Poor             | Poor                   | Poor                 | Low                           | dying tree, dieback, dead stub   |
| T24      | <i>Roystonea regia</i>                   | 大王椰子(王棕)     | 10.0                   | 270      | 2.0                      | Low            | Fair             | Fair                   | Fair                 | Low                           | dead fronds  |
| T25      | <i>Roystonea regia</i>                   | 大王椰子(王棕)     | 9.0                    | 280      | 0.5                      | -              | -                | Dead                   | -                    | -                             | dead tree  |

Notes: Amenity Value, Form, Health Condition and Structural Condition of trees were obtained by Visual Assessment Only.

## Appendix III – Photo Records

# General View



General view 01



General view 02

# General View



General view 03



General view 04

# General View



General view 05



General view 06

# General View



General view 07



General view 08

# General View



General view 09



General view 10

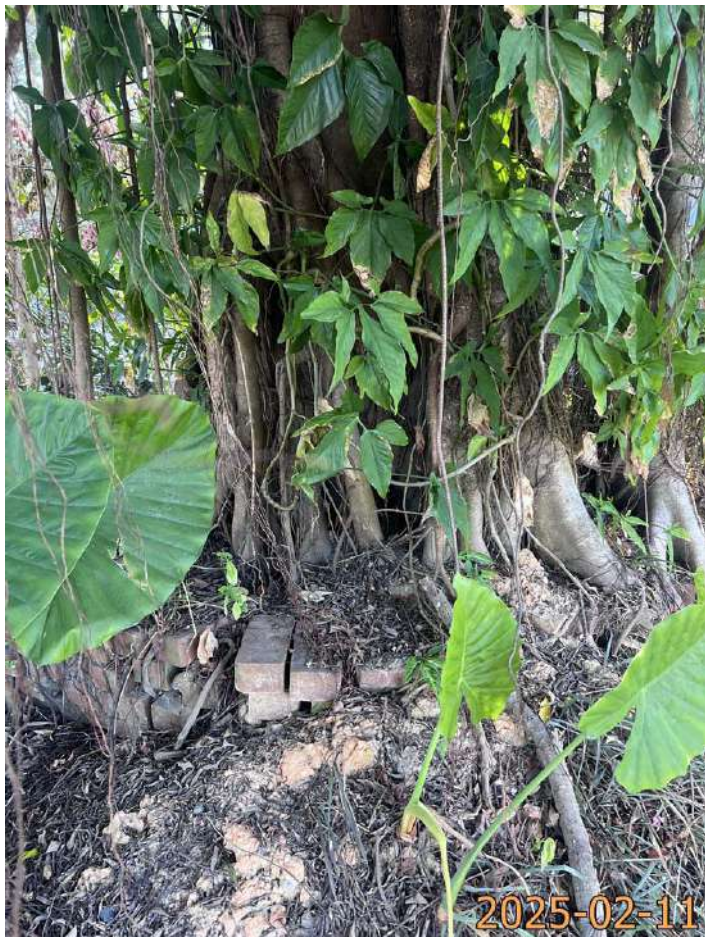
# Photo Records



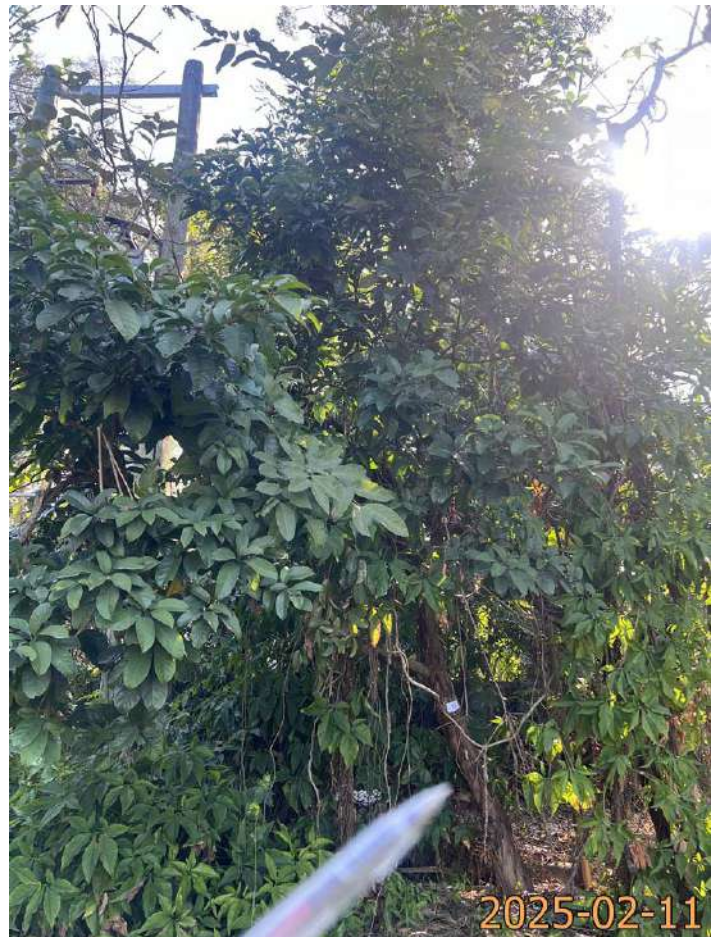
T1 (Overview)



T1 Epiphytic plants



T1 Restricted root



T2 (Overview)(Leaning)

# Photo Records



T2 Epiphytic plants



T2 Wound on branch



T2 Wound on trunk



T3 (Overview) (Dead tree)

# Photo Records



T3 Epiphytic plants



T4 (Overview) (Epiphytic plants)



T4 Exposed dead root



T4 Wound on trunk

# Photo Records



T5 (Overview)



T5 Dead branch



T5 Exposed dead root



T5 Wound on trunk

# Photo Records



T6 (Overview)



T6 Abnormal leaf size



T6 Broken stub



T6 Multi-trunks

# Photo Records



T7 (Overview)



T7 Broken branch



T7 Cross trunks



T7 Metal bar embedded into trunk\_1

# Photo Records



T7 Metal bar embedded into trunk\_2



T8 (Overview)



T8 Exposed dead root



T9 (Overview)

# Photo Records



T9 Dead stub



T9 Wound on trunk\_1



T9 Wound on trunk\_2



T10 (Overview)

# Photo Records



T10 Epiphytic plants

2025-02-11



T11 (Overview)

2025-02-11



T11 Cross branches

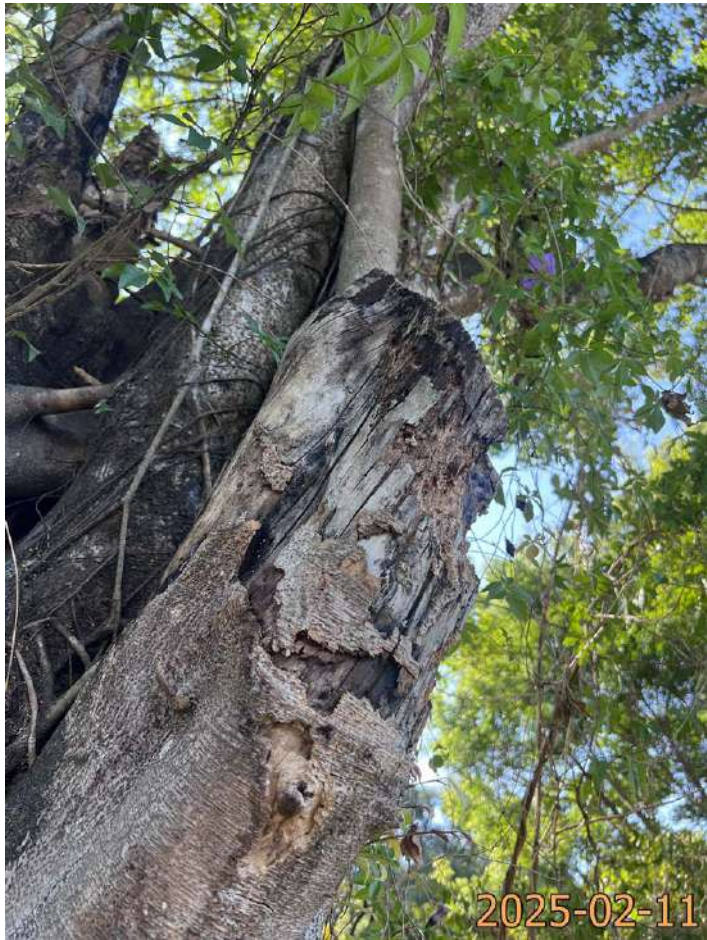
2025-02-11



T12 (Overview)

2025-02-11

# Photo Records



T12 Dead stub

2025-02-11



T13 (Overview)

2025-02-11



T13 Broken trunk (Hanger)

2025-02-11



T13 Wound on trunk with exposed deadwood

2025-02-11

# Photo Records



T13 Wound on trunk



T14 (Overview)



T14 Dieback (Topped)



T14 Epicormics

# Photo Records



T15 (Overview) (Dieback)



T15 Dead trunk



T15 Hanger



T15 Wound on trunk

# Photo Records



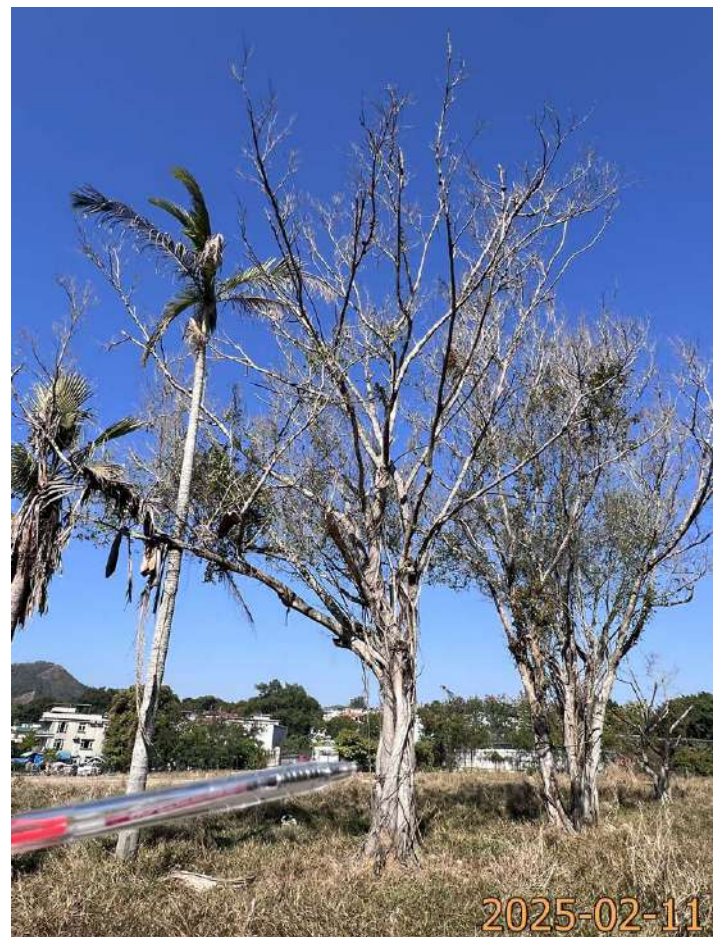
T16 (Overview) (Dieback)



T16 Dead trunk



T16 Wound on trunk with exposed deadwood (Trace of

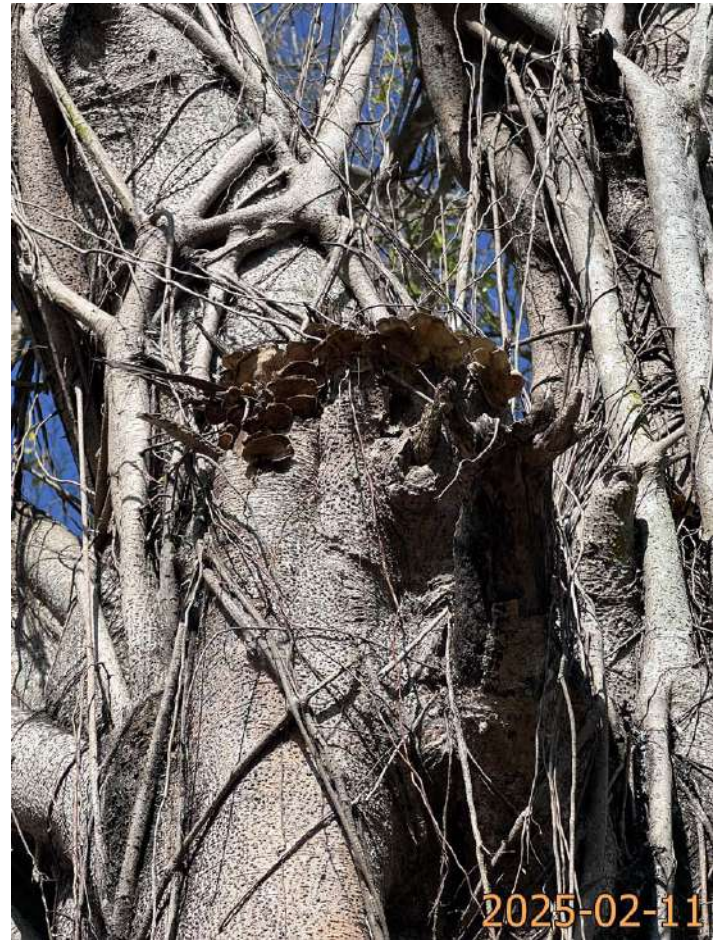


T17 (Overview) (Dieback)

# Photo Records



T17 Branch conflict with trunk of T18



T17 Dead stub with fungal fruiting bodies



T17 Trace of termite



T18 (Overview)

# Photo Records



T18 Dead fronds



T19 (Overview)



T19 Crown conflict with branch of T17



T19 Dead fronds

# Photo Records



T20 (Overview)



T20 Dead fronds



T21 (Overview)



T21 Dead fronds

# Photo Records



T22 (Overview)



T22 Bird nest

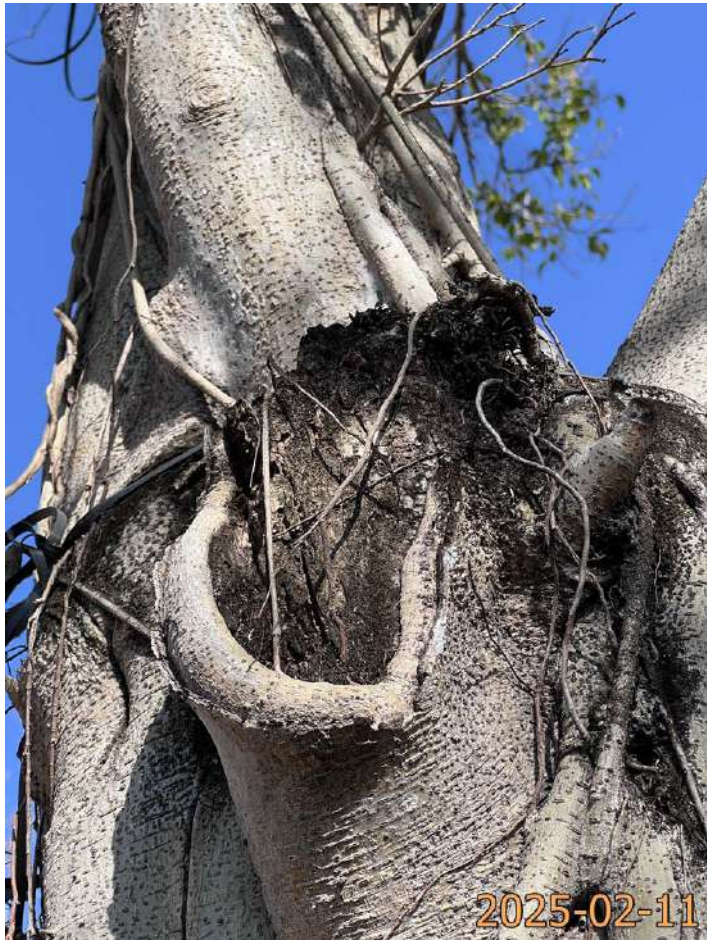


T22 Dieback



T23 (Overview)

# Photo Records



T23 Dead stub\_1



T23 Dead stub\_2



T23 Dieback



T24 (Overview)

# Photo Records



T24 Dead fronds



T25 (Overview) (Dead tree)