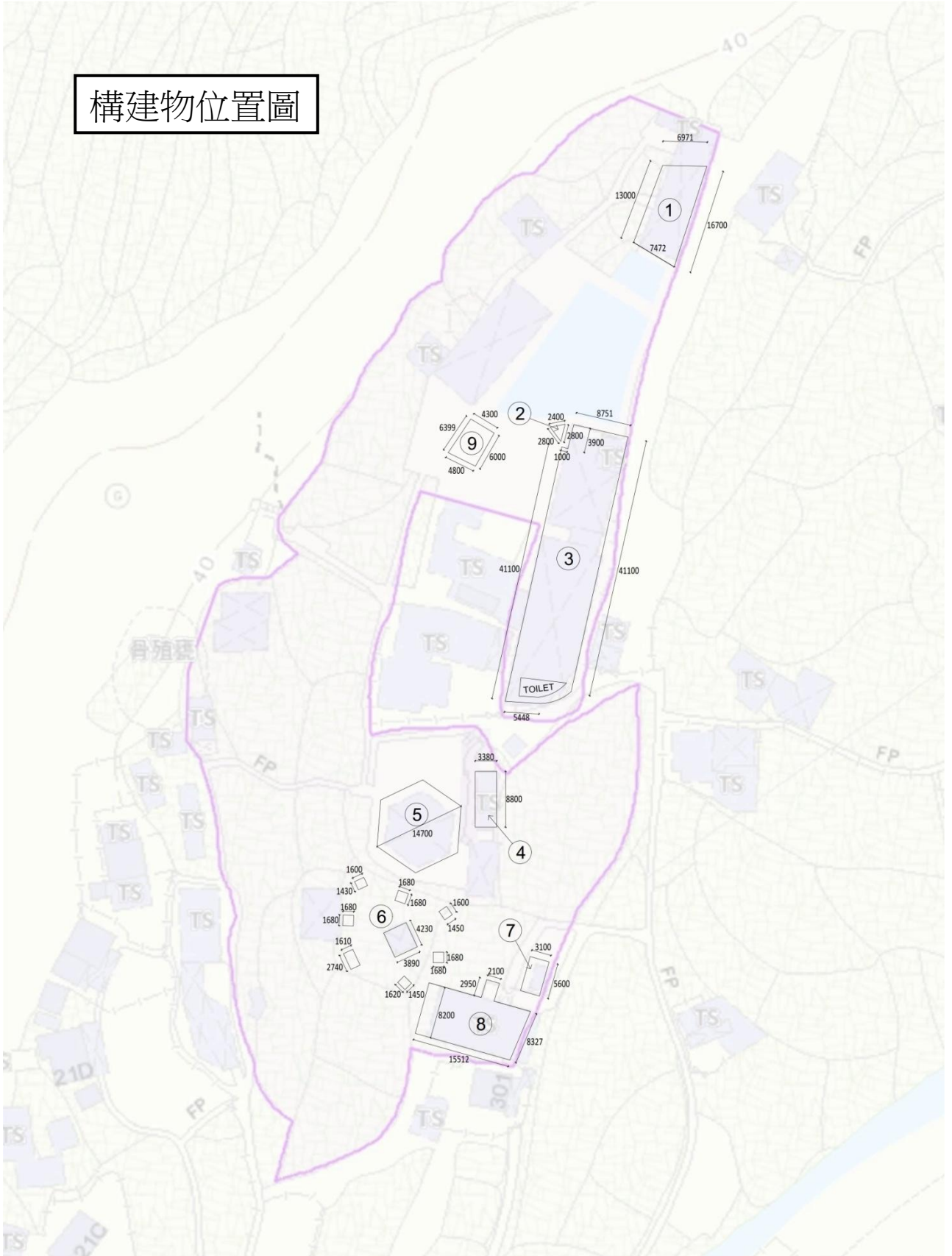


構建物面積及用途(配合地圖所示之編號)

| 編號 | 名稱 | 用途 | 面積(約平方米) | 高度(約米) |
|----|------|--------|--------------------|--------------|
| 1 | 有蓋操場 | 活動及休憩 | 102 | 3.4 |
| 2 | 攀石牆 | 活動設施 | 4 | 11 |
| 3 | 有蓋操場 | 活動及休憩 | 390 | 3.6 |
| | 更衣室 | 活動時使用 | 97.5 | 4.2 |
| 4 | 組合膠屋 | 活動 | 29.7 | 2.8 |
| 5 | 大帳篷 | 休憩 | 125 | 5.2 |
| 6 | 繩網陣 | 活動設施 | 104.4 (8棟，2-3層) | 11 |
| 7 | 儲物室 | 存放活動物資 | 17.2 | 2.8 |
| 8 | 生態館 | 活動 | 139 | 3.3 |
| 9 | 樹屋歷奇 | 活動設施 | 28 | 3 (離地約6米) |

構建物位置圖



REMARKS

DO NOT SCALE THIS DRAWING. ALL MEASUREMENTS MUST BE VERIFIED ON SITE. THE COPYRIGHT IN THIS DRAWING IS RETAINED BY ED ARCHITECTS & PARTNERS LIMITED WHOSE CONSENT MUST BE OBTAINED BEFORE USE OR REPRODUCTION IN PART CAN BE MADE.

PROJECT CLIENT

TREE TOP COTTAGE (LAYOUT)
D.D.7

DRAWING TITLE

PLAN LEVEL
FLOOR PLAN

JOB NO.: N/A
SCALE: 1:500 (A3)
DWG NO.: A-201

REFERENCE

BD REFERENCE: N/A
FSD REFERENCE: N/A

REVISION DATE DRAWN CHECKED

R.001 30-03-2026 HEX N/A



ED ARCHITECTS & PARTNERS LTD.

ED Architects & Partners Limited
 深圳市南山区南海大道1168號恆天大廈A座
 Evergrande Building Block A, 1168, Nanshan Avenue, Nanshan District, Shenzhen, China
 +852 6560 6636
 +86 147 1433 9278
 Email: hendrichan@edap.com.hk

構建物相片(配合地圖所示之編號)

