



**LCH Planning and Development
Consultants Limited**

Annex 1 : Aerial Photos

(Extracted based on Aerial Photo no. A26025 taken on 15.7.1991 by Lands Department)

Section 16 Application for Proposed Temporary Public Vehicle Park (Private Cars and Light Goods Vehicles Only) and Filling of Land at Po Kak Tsai, Fanling, for a period of 3 Years

(Source: HK GEODATA STORE, HKSAR Government)



**LCH Planning and Development
Consultants Limited**

Annex 1 : Aerial Photos

(Extracted based on Aerial Photo no. CN02883 taken on 29.1.1992 by Lands Department)

Section 16 Application for Proposed Temporary Public Vehicle Park (Private Cars and Light Goods Vehicles Only) and Filling of Land at Po Kak Tsai, Fanling, for a period of 3 Years

(Source: HK GEODATA STORE, HKSAR Government)



**LCH Planning and Development
Consultants Limited**

Section 16 Application for Proposed Temporary Public Vehicle Park (Private Cars and Light Goods Vehicles Only) and Filling of Land at Po Kak Tsai, Fanling, for a period of 3 Years

Annex 1 : Aerial Photos

(Extracted based on Aerial Photo no. CW63302 taken on 17.12.2004 by Lands Department)

(Source: HK GEODATA STORE, HKSAR Government)



**LCH Planning and Development
Consultants Limited**

Annex 1 : Aerial Photos

(Extracted based on Aerial Photo no. CW64714 taken on 7.5.2005 by Lands Department)

Section 16 Application for Proposed Temporary Public Vehicle Park (Private Cars and Light Goods Vehicles Only) and Filling of Land at Po Kak Tsai, Fanling, for a period of 3 Years

(Source: HK GEODATA STORE, HKSAR Government)



**LCH Planning and Development
Consultants Limited**

Annex 1 : Aerial Photos

(Extracted based on Aerial Photo no. CW78416 taken on 13.11.2007 by Lands Department)

Section 16 Application for Proposed Temporary Public Vehicle Park (Private Cars and Light Goods Vehicles Only) and Filling of Land at Po Kak Tsai, Fanling, for a period of 3 Years

(Source: HK GEODATA STORE, HKSAR Government)



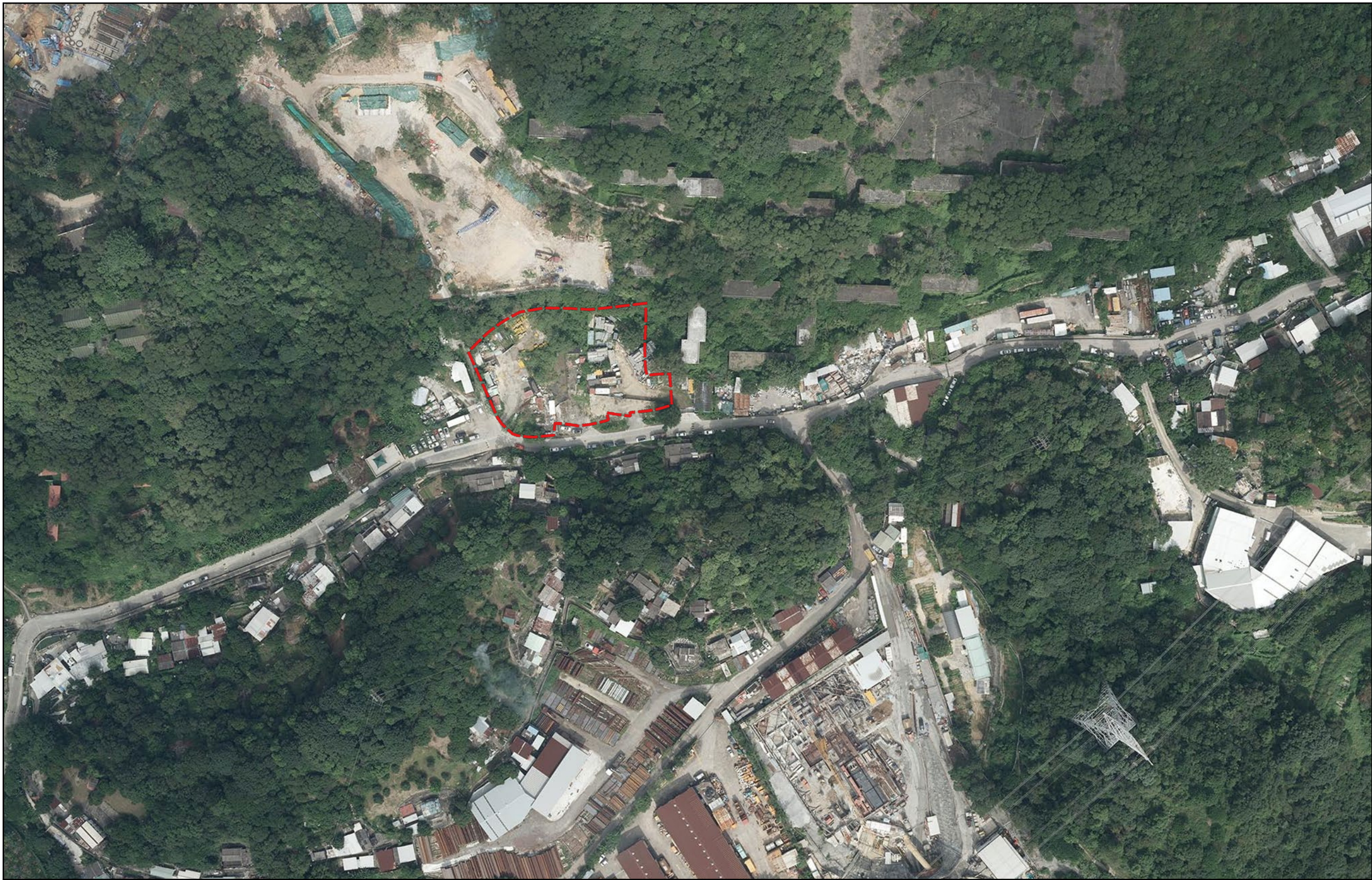
**LCH Planning and Development
Consultants Limited**

Annex 1 : Aerial Photos

(Extracted based on Aerial Photo no. CW1021846 taken on 31.1.2013 by Lands Department)

Section 16 Application for Proposed Temporary Public Vehicle Park (Private Cars and Light Goods Vehicles Only) and Filling of Land at Po Kak Tsai, Fanling, for a period of 3 Years

(Source: HK GEODATA STORE, HKSAR Government)



**LCH Planning and Development
Consultants Limited**

Annex 1 : Aerial Photos

(Extracted based on Aerial Photo no. E005725C taken on 27.10.2016 by Lands Department)

Section 16 Application for Proposed Temporary Public Vehicle Park (Private Cars and Light Goods Vehicles Only) and Filling of Land at Po Kak Tsai, Fanling, for a period of 3 Years

(Source: HK GEODATA STORE, HKSAR Government)



**LCH Planning and Development
Consultants Limited**

Annex 1 : Aerial Photos

(Extracted based on Aerial Photo no E019034C taken on 4.4.2017 by Lands Department)

Section 16 Application for Proposed Temporary Public Vehicle Park (Private Cars and Light Goods Vehicles Only) and Filling of Land at Po Kak Tsai, Fanling, for a period of 3 Years

(Source: HK GEODATA STORE, HKSAR Government)



**LCH Planning and Development
Consultants Limited**

Annex 1 : Aerial Photos

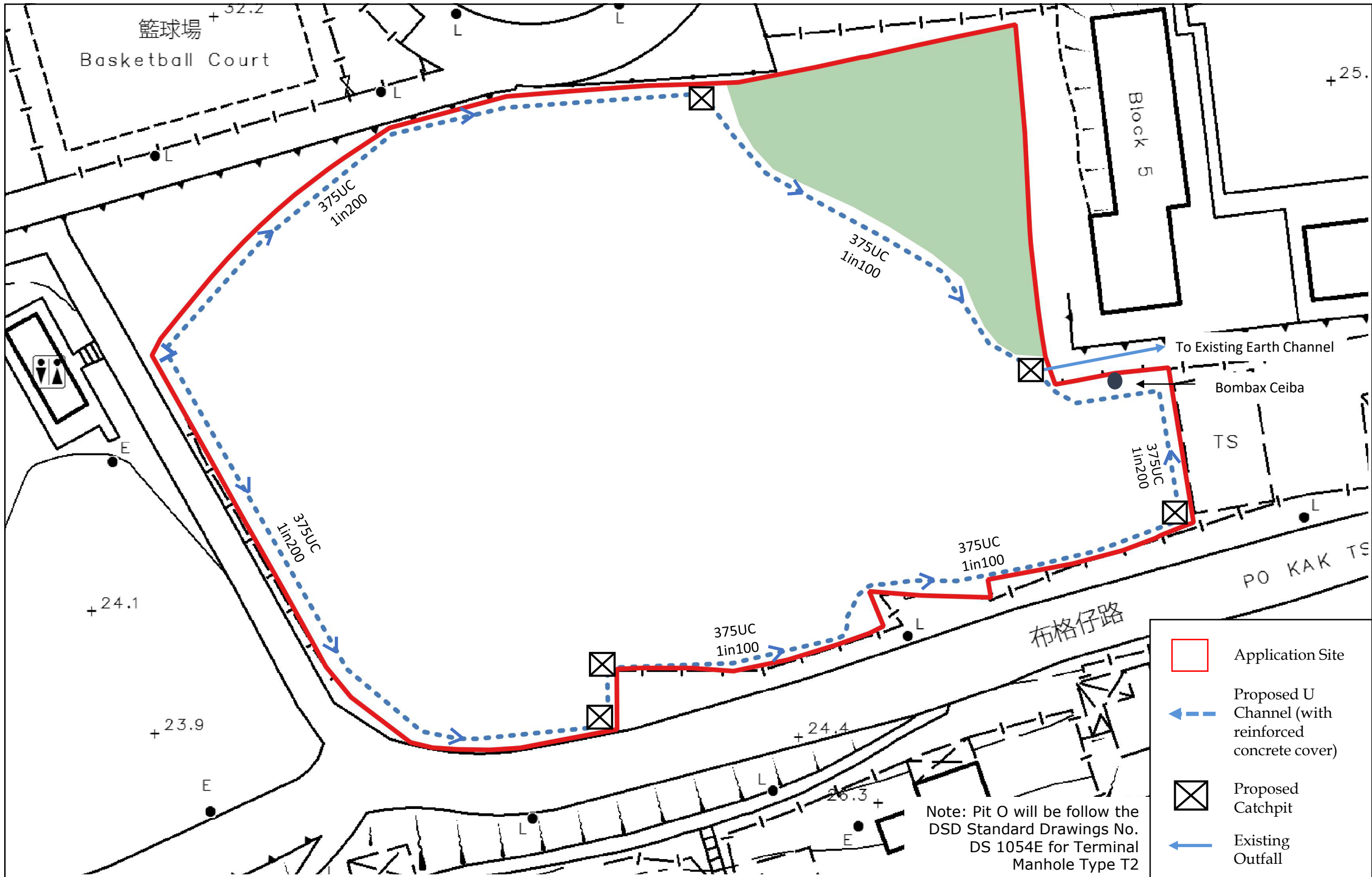
(Extracted based on Aerial Photo no E125429C taken on 14.1.2021 by Lands Department)

Section 16 Application for Proposed Temporary Public Vehicle Park (Private Cars and Light Goods Vehicles Only) and Filling of Land at Po Kak Tsai, Fanling, for a period of 3 Years

(Source: HK GEODATA STORE, HKSAR Government)

All parking spaces satisfy the dimension requirement under the Hong Kong Planning Standard and Guidelines



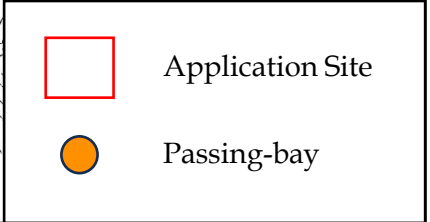
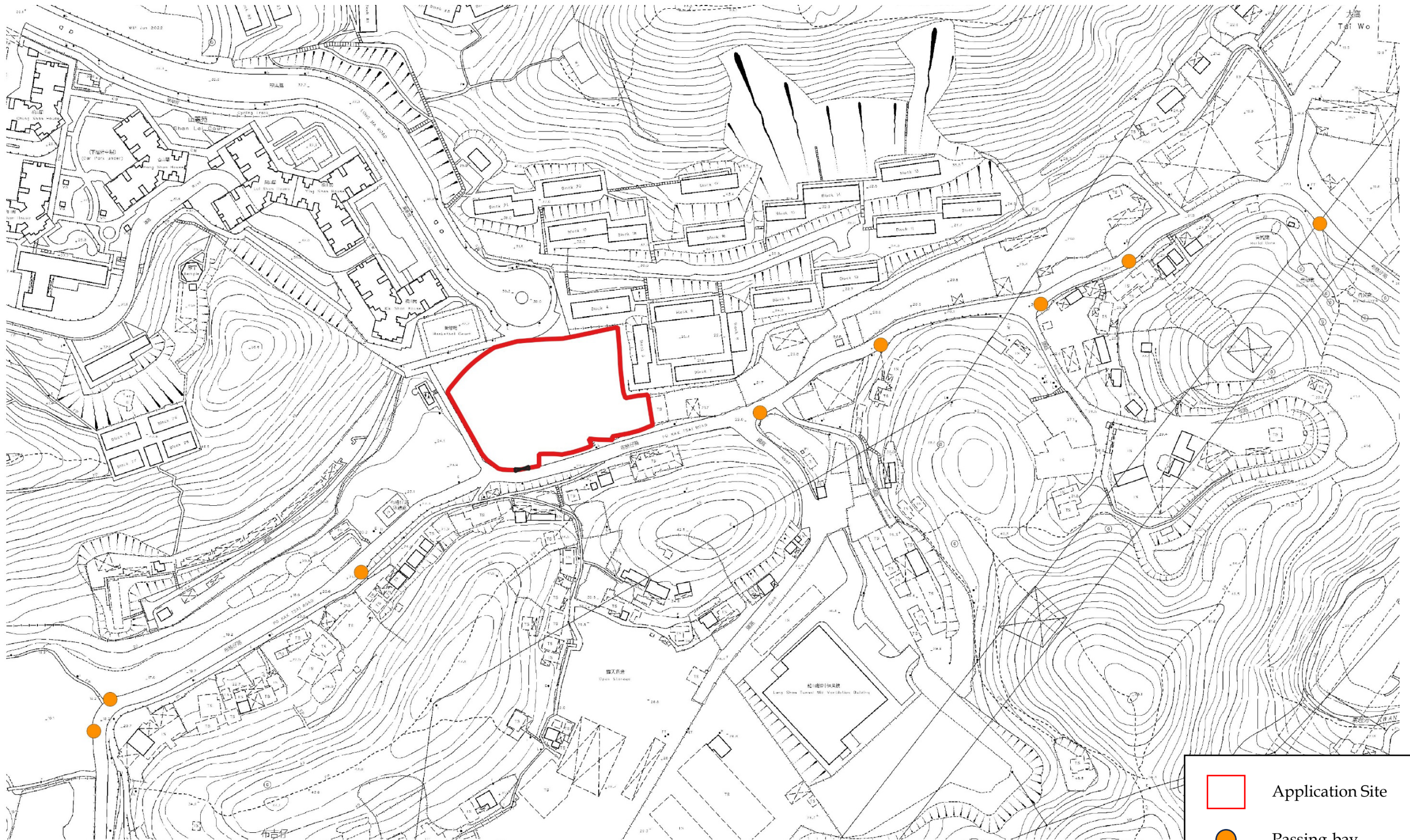


**LCH Planning and Development
Consultants Limited**

Annex 3 : Indicative Drainage Connection

Section 16 Application for Proposed Temporary Public Vehicle Park (Private Cars and Light Goods Vehicles Only) and Filling of Land at Po Kak Tsai, Fanling, for a period of 3 Years

(Source: HK GEODATA STORE, HKSAR Government)

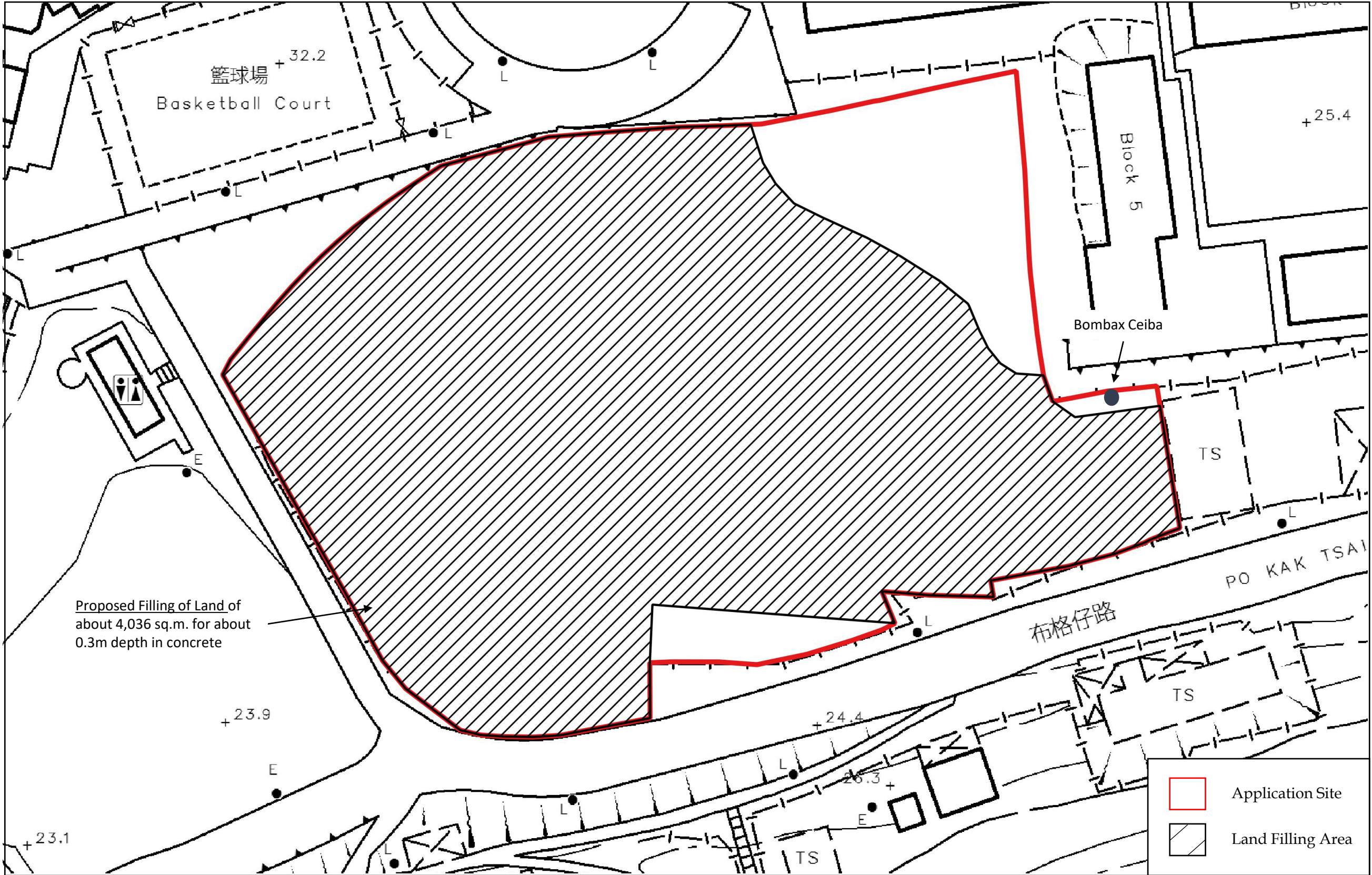


**LCH Planning and Development
Consultants Limited**

Section 16 Application for Proposed Temporary Public Vehicle Park (Private Cars and Light Goods Vehicles Only) and Filling of Land at Po Kak Tsai, Fanling, for a period of 3 Years

Annex 4 : Location of Passing-bay along Po Kak Tsai Road

(Source: HK GEODATA STORE, HKSAR Government)



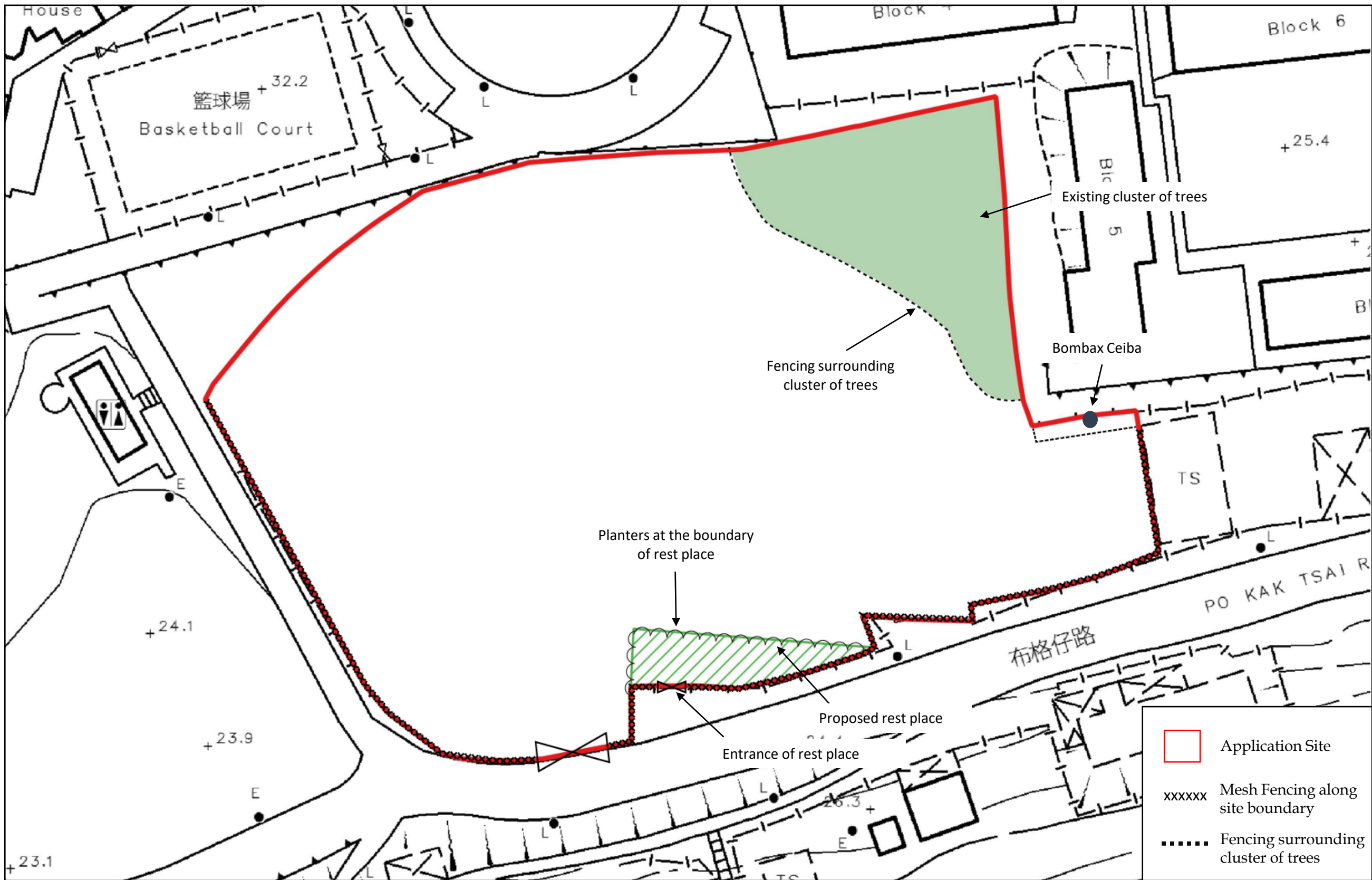
- Application Site
- Land Filling Area


LCH Planning and Development Consultants Limited

Annex 5 : Proposed Land Filling

Section 16 Application for Proposed Temporary Public Vehicle Park (Private Cars and Light Goods Vehicles Only) and Filling of Land at Po Kak Tsai, Fanling, for a period of 3 Years

(Source: HK GEODATA STORE, HKSAR Government)



**LCH Planning and Development
Consultants Limited**

Annex 6 : Indicative Landscape Treatments

Section 16 Application for Proposed Temporary Public Vehicle Park (Private Cars and Light Goods Vehicles Only) and Filling of Land at Po Kak Tsai, Fanling, for a period of 3 Years

(Source: HK GEODATA STORE, HKSAR Government)