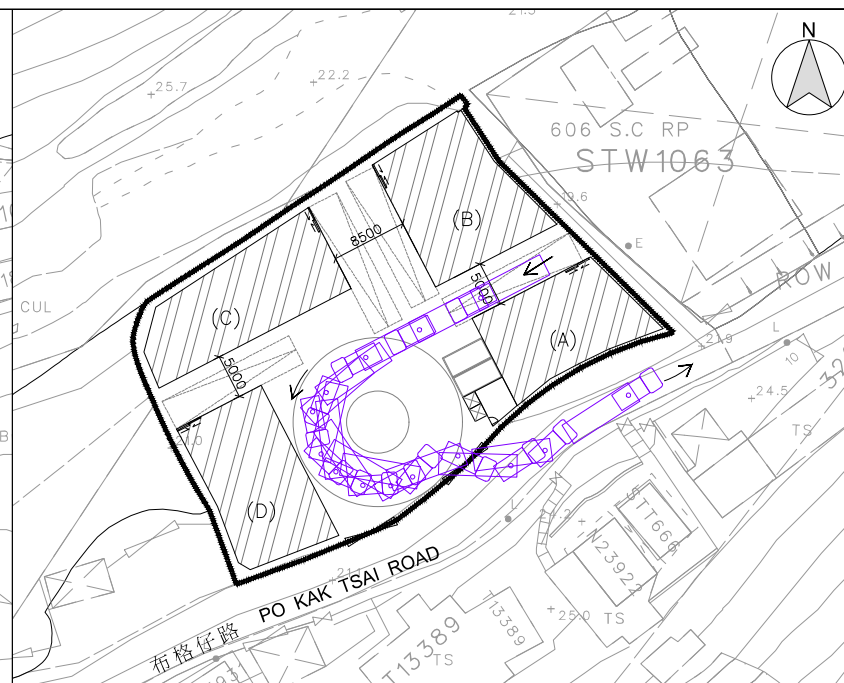
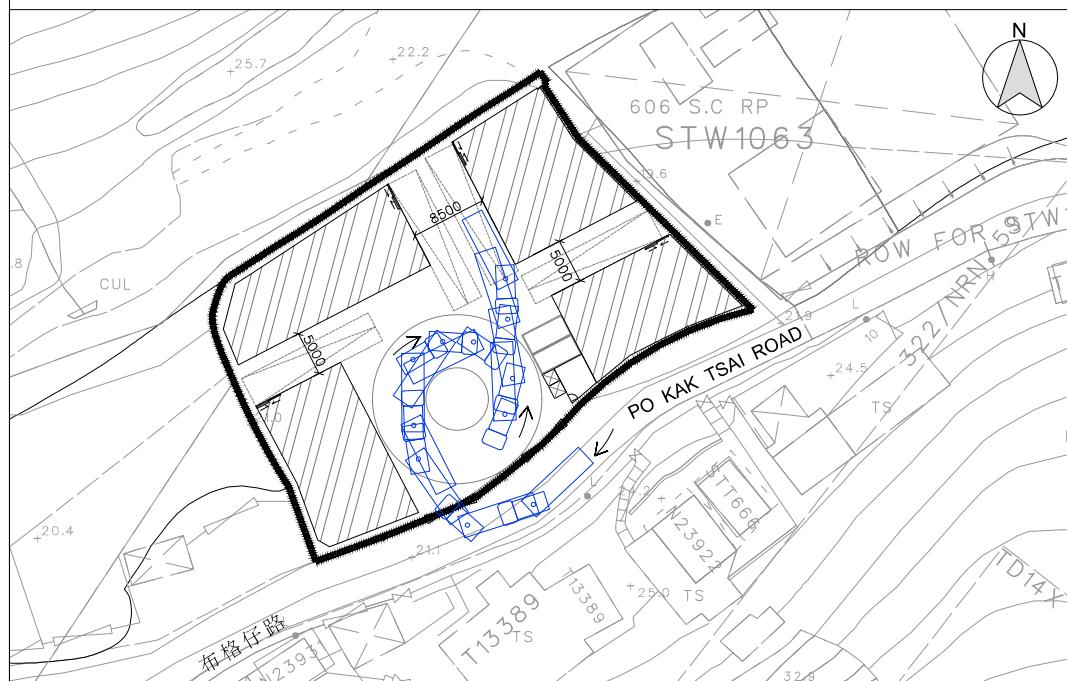


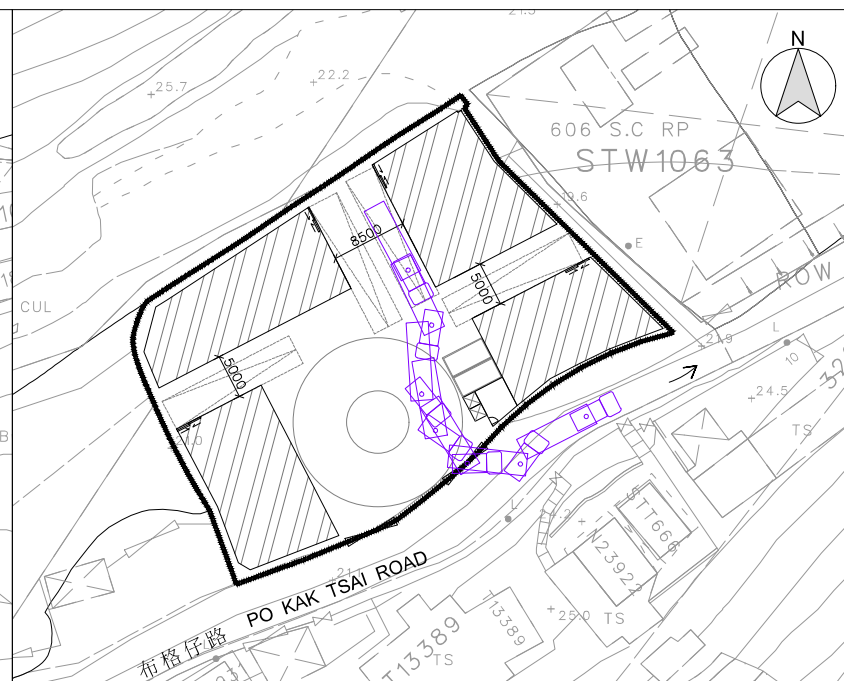
PATH OF CONTAINER VEHICLE IN (WAREHOUSE A)



PATH OF CONTAINER VEHICLE OUT (WAREHOUSE A)

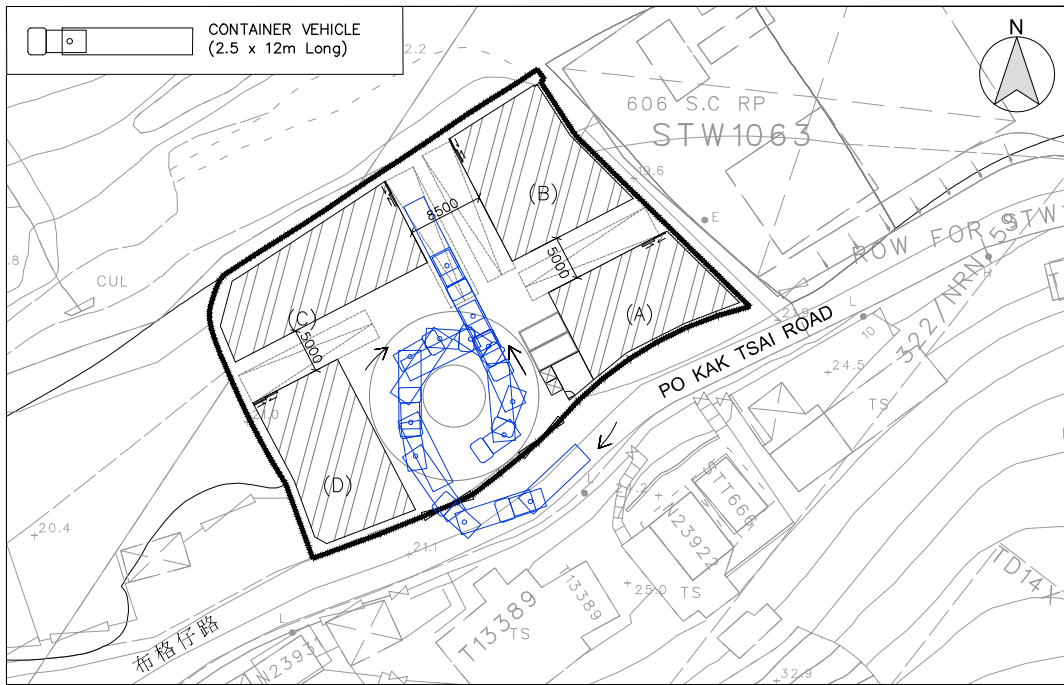


PATH OF CONTAINER VEHICLE IN (WAREHOUSE B)

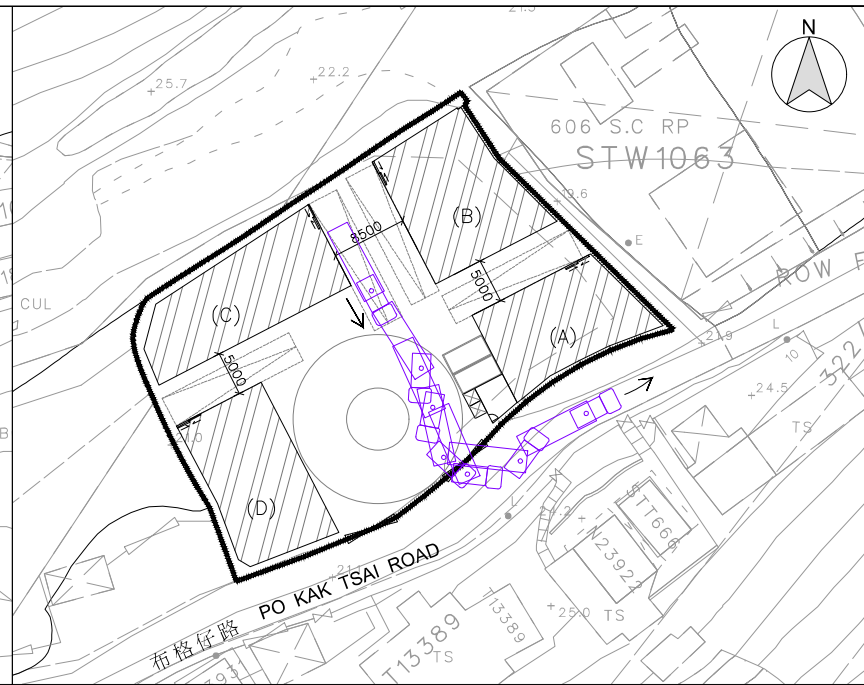


PATH OF CONTAINER VEHICLE OUT (WAREHOUSE B)

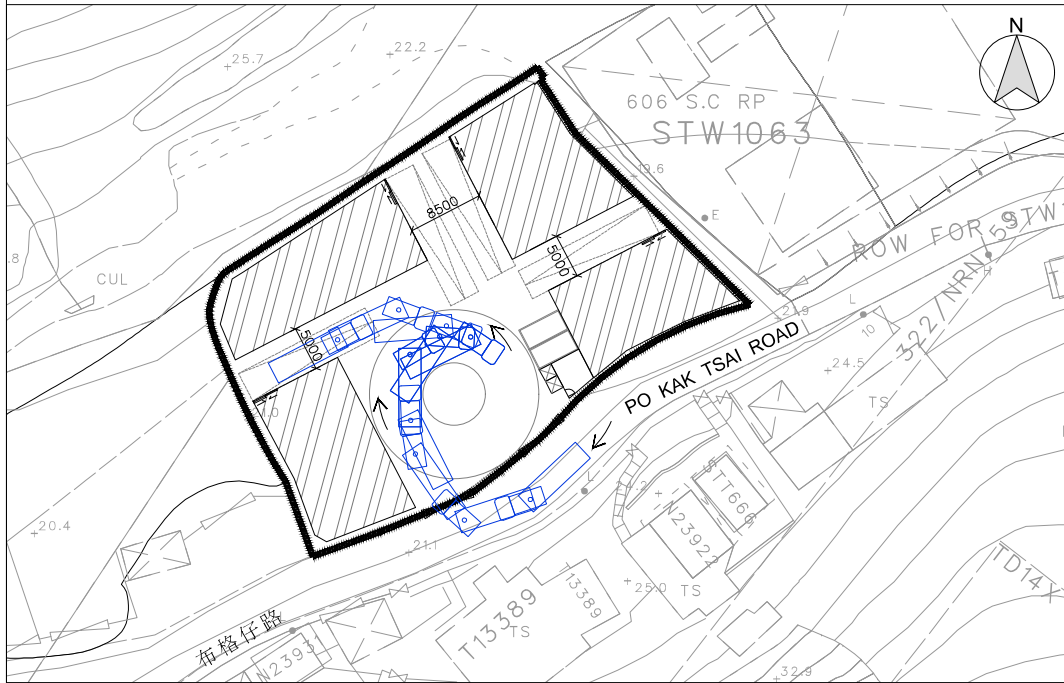
[illegible]



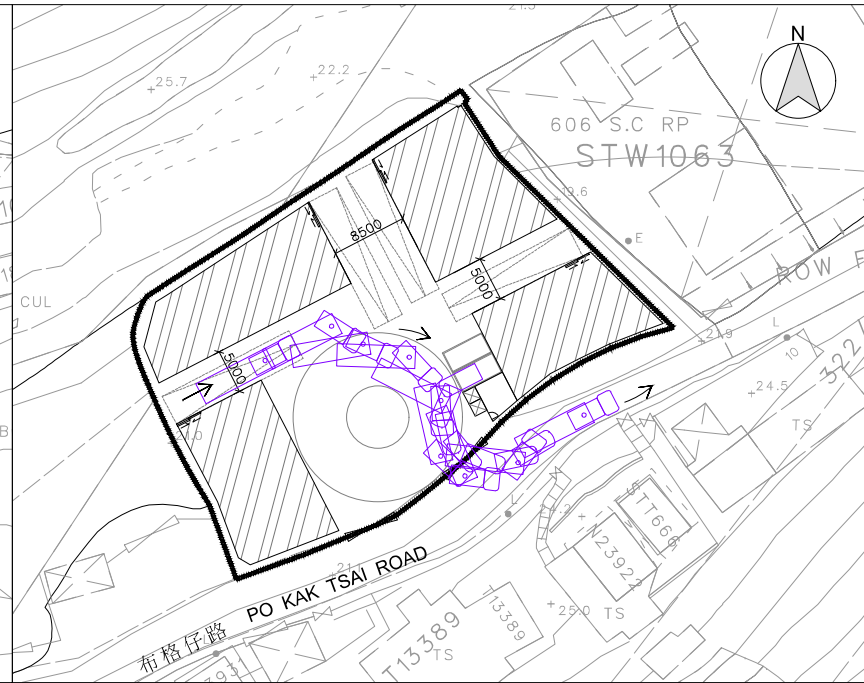
PATH OF CONTAINER VEHICLE IN (WAREHOUSE C)



PATH OF CONTAINER VEHICLE OUT (WAREHOUSE C)



PATH OF CONTAINER VEHICLE IN (WAREHOUSE D)



PATH OF CONTAINER VEHICLE OUT (WAREHOUSE D)

B.D. Reference	01/19/97
M.W. Reference	05/05/98
L.D. Reference	03/07/99
F.S.D. Reference	08/02/99

Copyright Reserved nothing may be reprinted or utilized in any form or by any means without written permission from the M&D.

REV	DESCRIPTION	DATE

M&D
Planning and
Construction
Consultant Ltd.

Tel: 2191 4088
Fax: 3105 0810
Email: sales@moderneng.com.hk

Project
新界粉嶺丈量約份第85約地段第
606號A分段餘段(部分)、
606號B分段餘段
及毗連政府土地

Application
擬議臨時貨物裝卸及貨運設施
(為期 3 年)

Drawing Title
PROPOSED SWEEP PATH ANALYSIS
(CONTAINER VEHICLE -
WAREHOUSE C & D)

Scale
1:500 (A3)

Revisions
—

Designed by
LW

Drawn by
Arthur

Checked by
LW

Date
23-JUL-2025

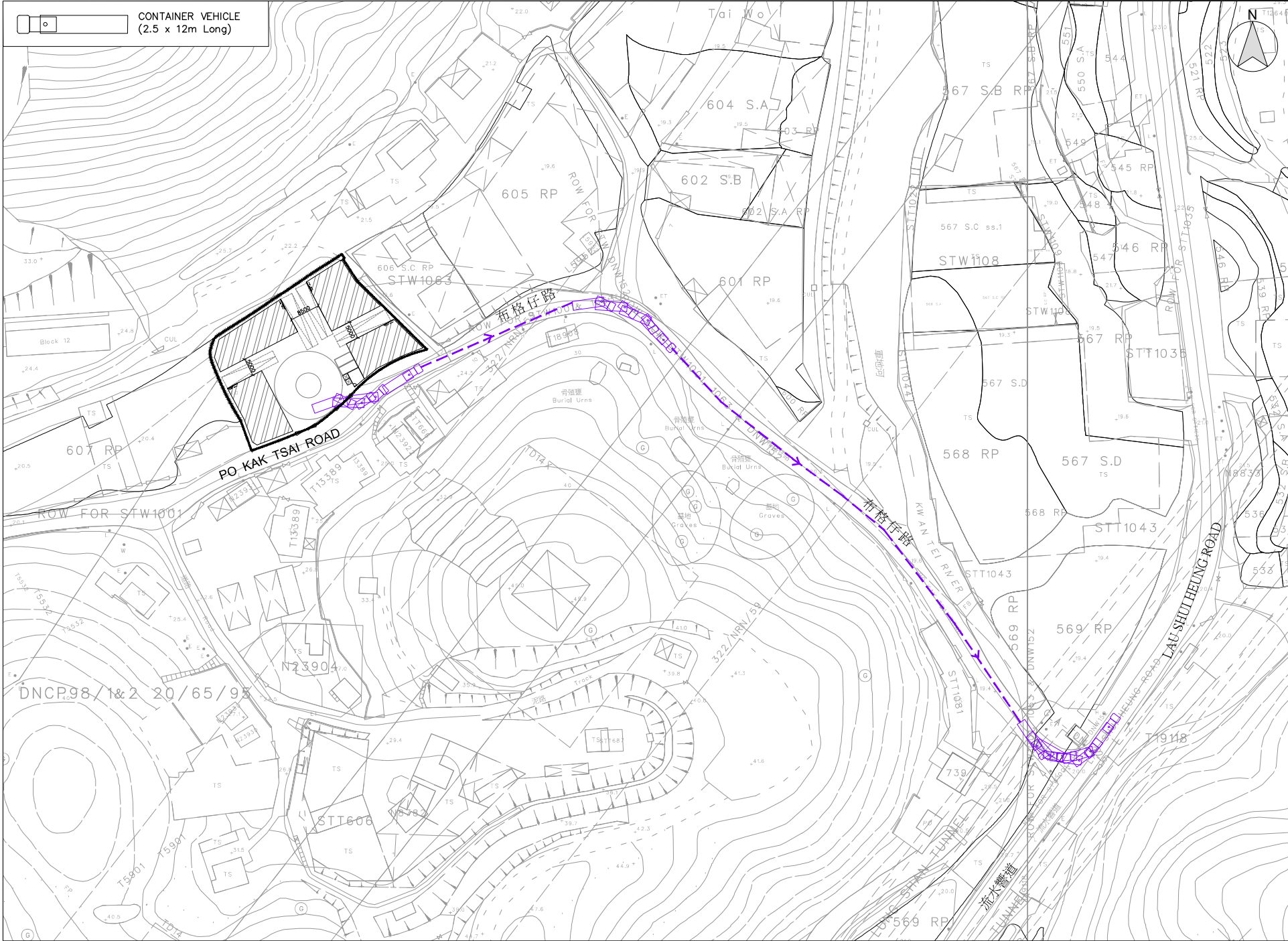
Job No.
—

Drawing No.
TD-02



Scale 1:500 (A3)	Revisions —
Designed by LW	Drawn by Arthur
Checked by LW	Date 23-JUL-2025
Job No. —	Drawing No. TD-03

CONTAINER VEHICLE
(2.5 x 12m Long)



B.D. Reference	BT 1987
M.W. Reference	ST 3/9/98
L.D. Reference	LS 17/9/98
F.S.D. Reference	SP 10/10/98

Copyright Reserved nothing may be reprinted or utilized in any form or by any means without written permission from the M&D.

REV	DESCRIPTION	DATE

M&D
Planning and
Construction
Consultant Ltd.

Tel: 2191 4088
Fax: 3105 0810
Email: sales@moderneng.com.hk

Project
新界粉嶺丈量約份第85約地段第
606號A分段餘段(部分)、
606號B分段餘段
及毗連政府土地

Application
擬設臨時貨物裝卸及貨運設施
(為期3年)

Drawing Title
PROPOSED SWEEP PATH ANALYSIS
(CONTAINER VEHICLE OUT TO LAU
SHUI HEUNG ROAD)

Scale
1:1000 (A3)

Revisions
—

Designed by
LW

Drawn by
Arthur

Checked by
LW

Date
23-JUL-2025

Job No.
—

Drawing No.
TD-05

PATH OF CONTAINER VEHICLE OUT TO LAU SHUI HEUNG ROAD