

圖示:

緊急照明燈

4.5公斤二氧化碳滅火器

緊急出路指示牌

申請範圍

- A
- 物流倉 (大約面積 172m², 5m高 - 一層)
- B
- 物流倉 (大約面積 209m², 5m高 - 一層)
- C
- 物流倉 (大約面積 212m², 5m高 - 一層)
- D
- 物流倉 (大約面積 199m², 5m高 - 一層)
- E
- 寫字樓和交通督導員室 (大約面積 14m², 3m高 - 一層)
- F
- 男女廁所x2 - (大約面積 4.5m², 3m高 - 一層)

FIRE SERVICES NOTES

1.

PORTABLE FIRE EXTINGUISHERS SHALL BE PROVIDED AS INDICATED ON THE BUILDING PLANS.

2.

ALL LININGS FOR ACOUSTIC, THERMAL INSULATION PURPOSES IN DUCTINGS AND CONCEALED LOCATIONS SHALL BE OF CLASS 1 OR CLASS 2 RATE OF SURFACE SPREAD OF FLAME AS PER BRITISH STANDARD 476: PART 7 OR ITS INTERNATIONAL EQUIVALENT, OR BE BROUGHT UP TO THAT STANDARD BY USE OF AN APPROVED FIRE RETARDANT PRODUCT.

3.

ALL LINING FOR ACOUSTIC, THERMAL INSULATION PURPOSES WITHIN THE PROTECTED MEANS OF ESCAPE SHALL BE OF CLASS 1 OR CLASS 2 RATE OF SURFACE SPREAD OF FLAME AS PER BRITISH STANDARD 476: PART 7 OR ITS INTERNATIONAL EQUIVALENT, OR BE BROUGHT UP TO THAT STANDARD BY USE OF AN APPROVED RETARDANT PRODUCT.

4.

ANY INTENDED STORAGE OR USE OF DANGEROUS GOODS AS DEFINED IN CHAPTER 295 OF THE LAWS OF HONG KONG SHOULD BE NOTIFIED TO THE DIRECTOR OF FIRE SERVICES.

5.

EMERGENCY LIGHTING SHALL BE PROVIDED THROUGHOUT THE ENTIRE BUILDING AND ALL EXIT ROUTES LEADING TO GROUND LEVEL AND COMPLIED WITH BS 5266 PART 1:2016 AND BS EN 1838:2013 AND FSD CIRCULAR LETTER 4/2021

6.

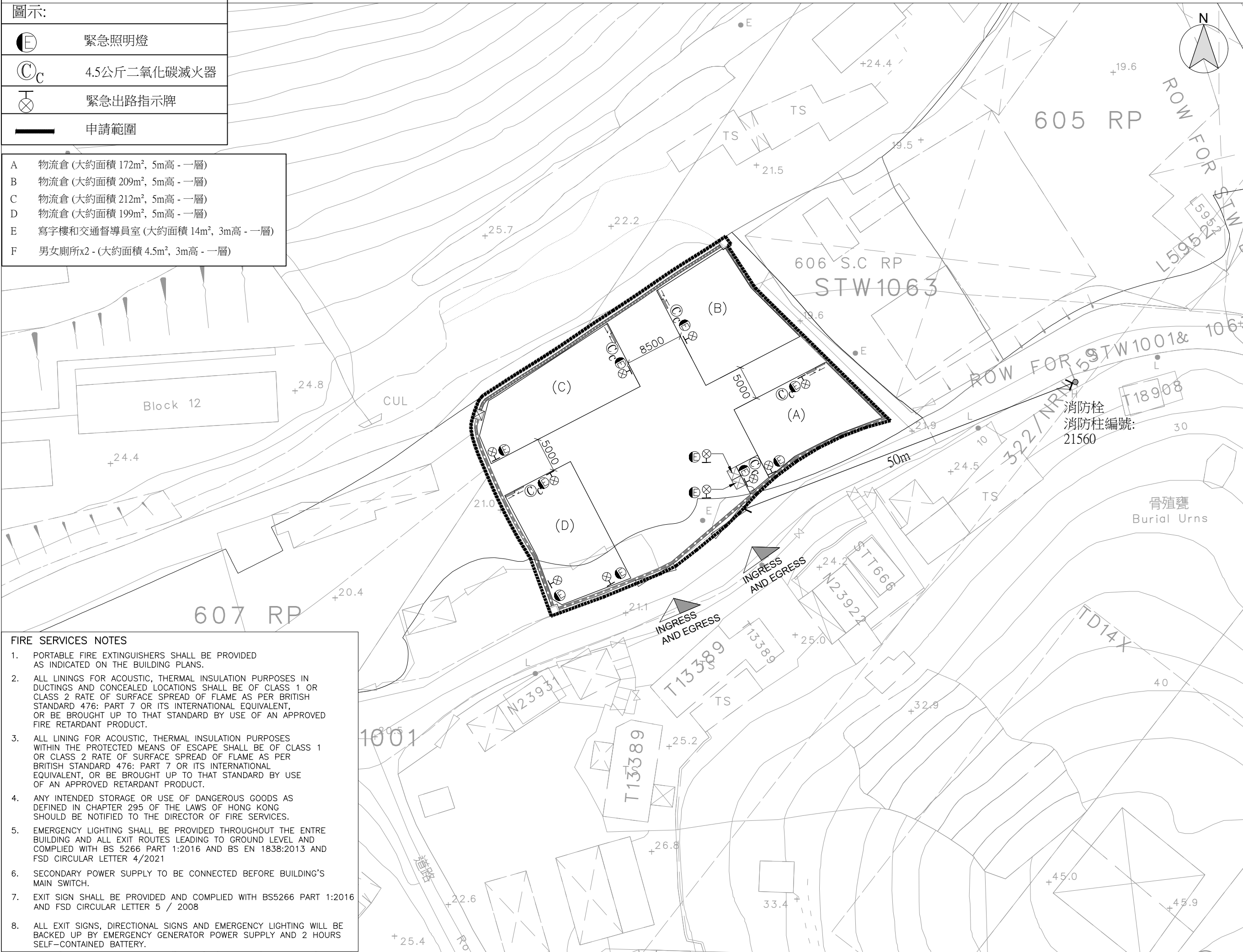
SECONDARY POWER SUPPLY TO BE CONNECTED BEFORE BUILDING'S MAIN SWITCH.

7.

EXIT SIGN SHALL BE PROVIDED AND COMPLIED WITH BS5266 PART 1:2016 AND FSD CIRCULAR LETTER 5 / 2008

8.

ALL EXIT SIGNS, DIRECTIONAL SIGNS AND EMERGENCY LIGHTING WILL BE BACKED UP BY EMERGENCY GENERATOR POWER SUPPLY AND 2 HOURS SELF-CONTAINED BATTERY.



B.D. Reference

屋宇署檔案

M.W. Reference

小型工程檔案

L.D. Reference

地政署檔案

F.S.D. Reference

消防處檔案

Notes

註釋

Copyright Reserved nothing may be reprinted or utilized in any form or by any means without written permission from the M&D.

REV

DESCRIPTION

DATE

M&D

Planning and Construction Consultant Ltd.

Tel: 2191 4088

Fax: 3105 0810

Email: sales@moderneng.com.hk

Project

項目

新界粉嶺丈量約份第85約地段第606號A分段餘段(部分)、606號B分段餘段及毗連政府土地

Application

申請

擬議臨時貨物裝卸及貨運設施(為期 3 年)

Drawing Title

圖名

PROPOSED FIRE SERVICE INSTALLATION AND EQUIPMENT PLAN

Scale

比例

1:500 (A3)

Revisions

修訂

Designed by

設計者

LW

Drawn by

制圖人

Arthur

Checked by

核實

LW

Date

日期

12-MAY-2025

Job No.

工程項目

-

Drawing No.

圖號

PD-01