

Private Cars Run-out

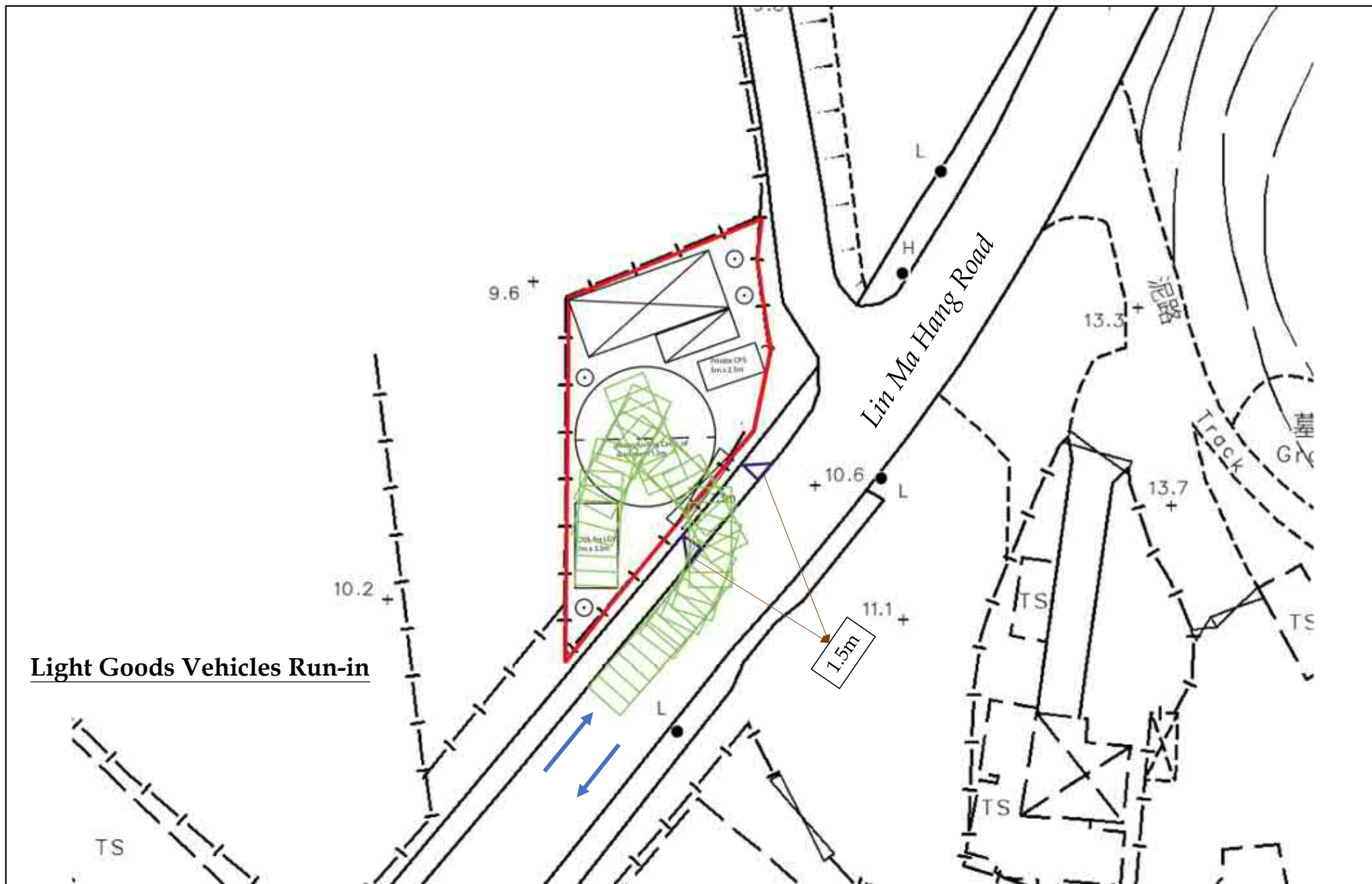


**LCH Planning and Development
Consultants Limited**

Figure 2b : Swept Path Analysis for application site

Source: HK Geodata Store & Town Planning Board, HKSAR Government and Geoinfo Map

Section 16 Application for Proposed Temporary Shop and Services Use and Associated Filling of Land for a Period of 3 Years at the Remaining Portion of Section A of Lot No. 610 in Demarcation District 90, Man Kam To

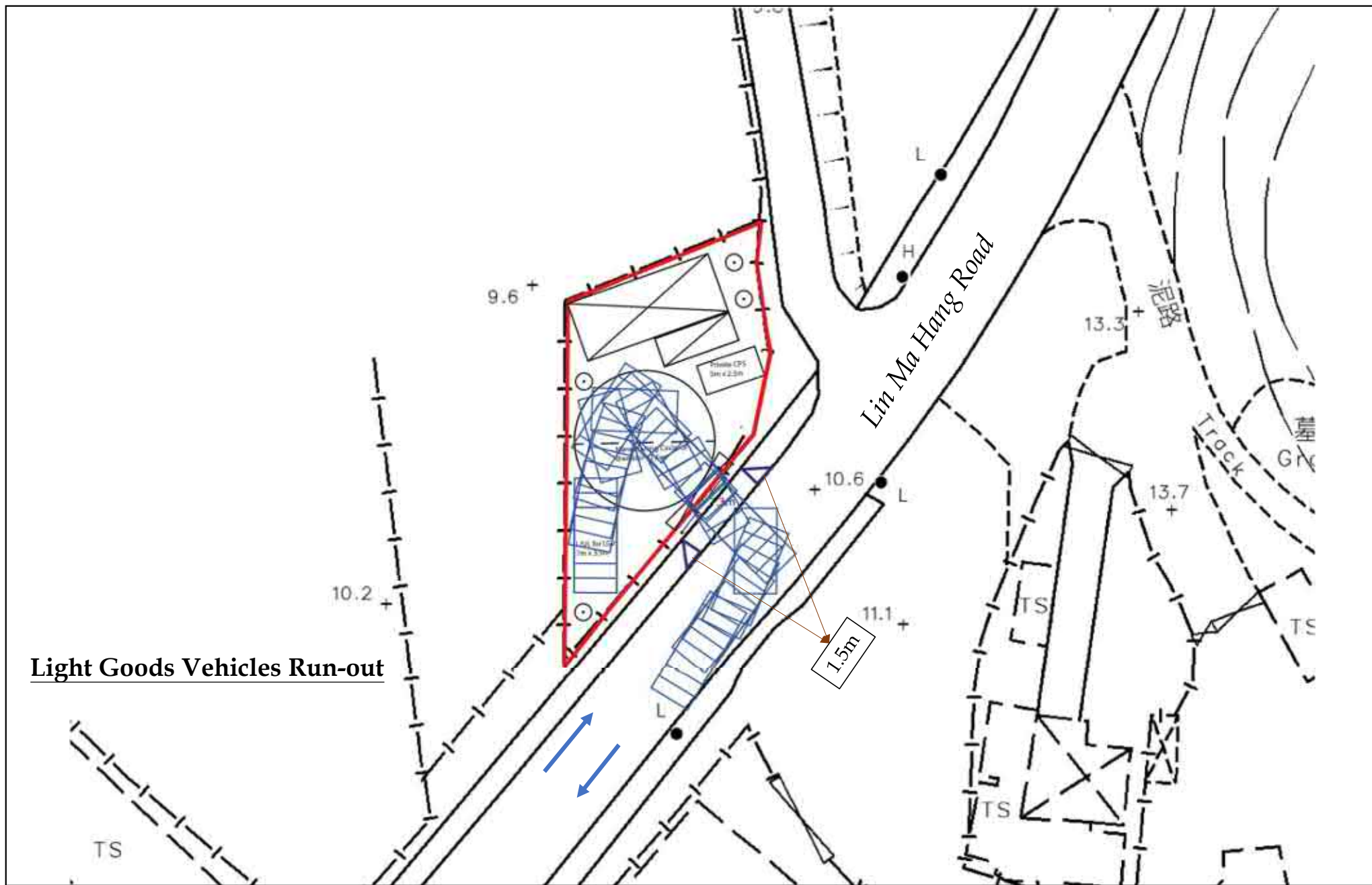


**LCH Planning and Development
Consultants Limited**

Figure 2c : Swept Path Analysis for application site

Source: HK Geodata Store & Town Planning Board, HKSAR Government and Geoinfo Map

Section 16 Application for Proposed Temporary Shop and Services Use and Associated Filling of Land for a Period of 3 Years at the Remaining Portion of Section A of Lot No. 610 in Demarcation District 90, Man Kam To



**LCH Planning and Development
Consultants Limited**

Figure 2d : Swept Path Analysis for application site

Source: HK Geodata Store & Town Planning Board, HKSAR Government and Geoinfo Map

Section 16 Application for Proposed Temporary Shop and Services Use and Associated Filling of Land for a Period of 3 Years at the Remaining Portion of Section A of Lot No. 610 in Demarcation District 90, Man Kam To