

Extracted from Draft Man Kam To Outline Zoning Plan No. S/NE-MKT/6

Location Plan

**Proposed Temporary Coach Repair Workshop and
Open Storage of Vehicles (coach only) and
Ancillary facilities and Associated Filling of Land at
whole Lot of Lot 100 in D.D.86.**

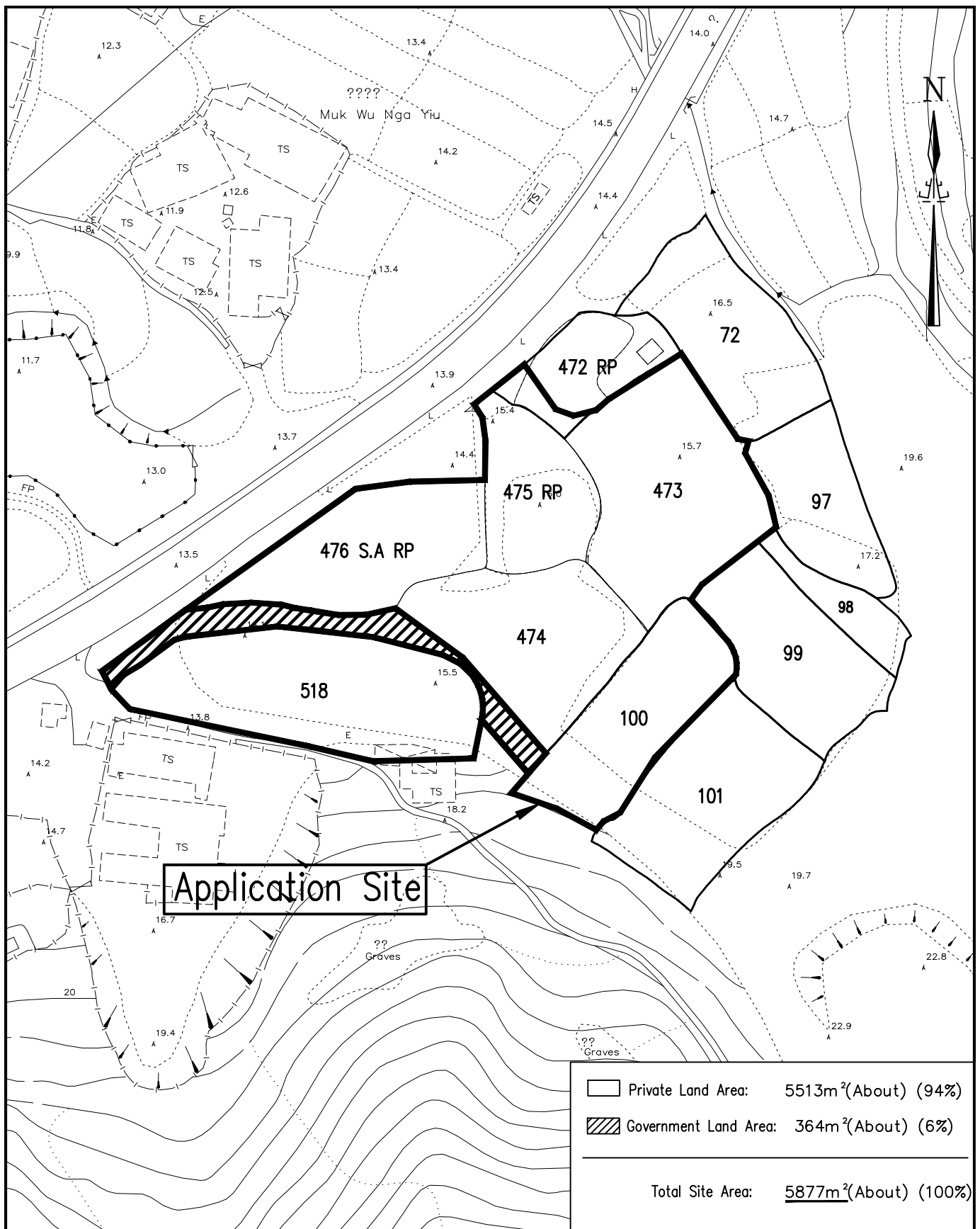
**Part of Lot 472RP,
whole Lot of Lots 473, 474, 475RP, 476 S.A. RP
and 518 in D.D.90 and Adjoining Government Land,
for a period of 3 years, Lin Ma Hang,
Ta Kwu Ling, North District, New Territories**

HELICON MA
SURVEYING LIMITED

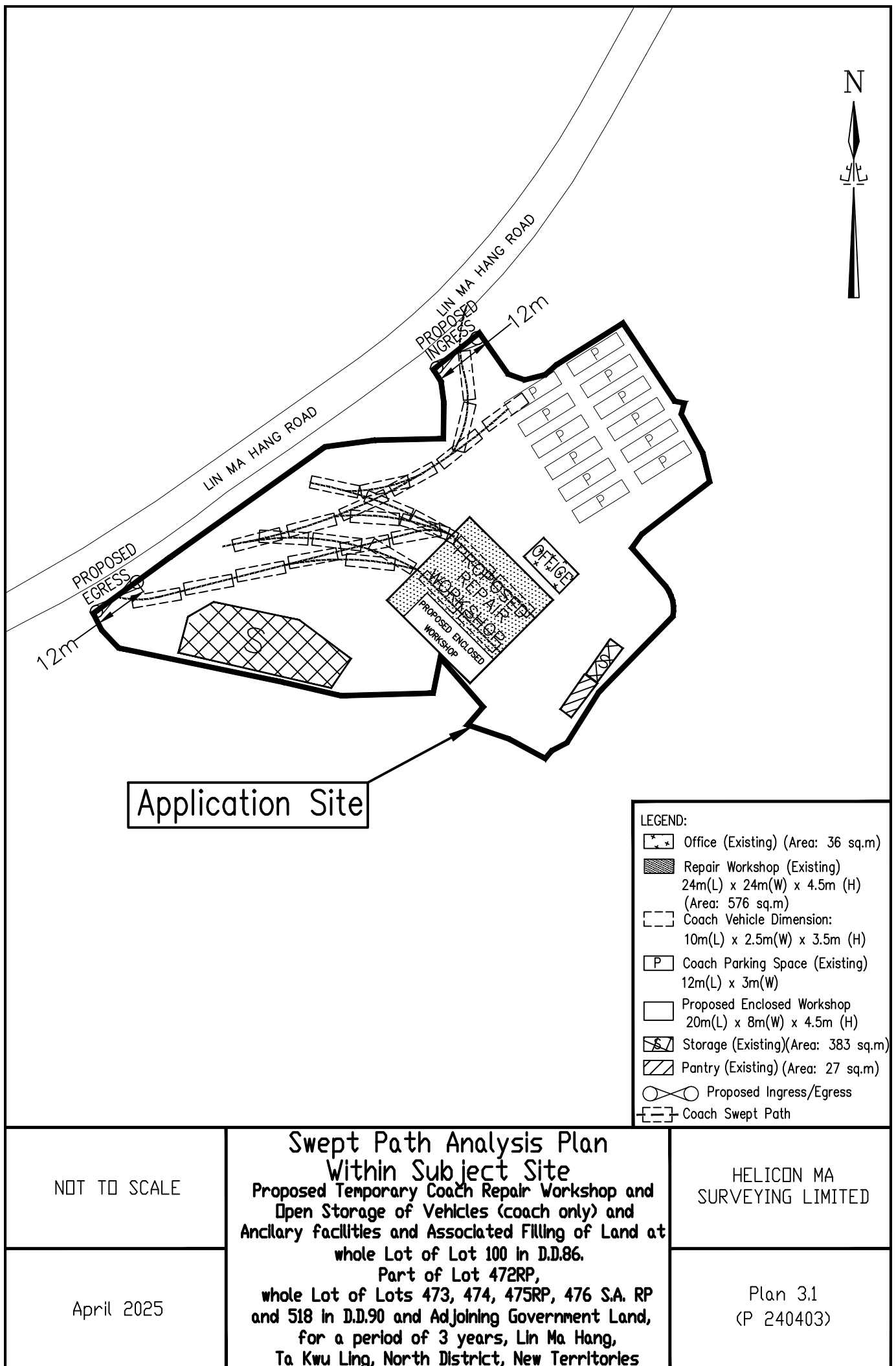
1:2000

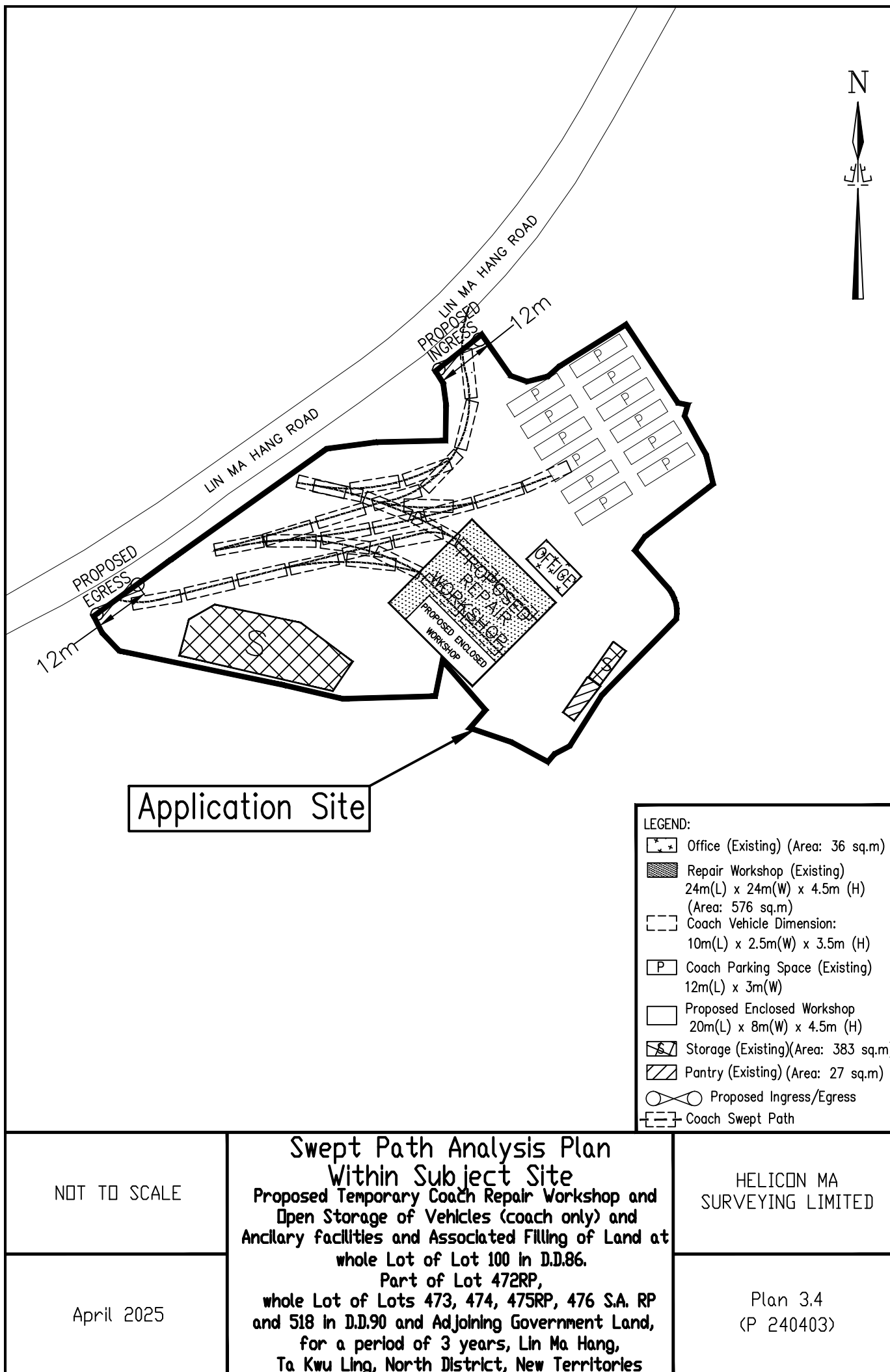
April 2025

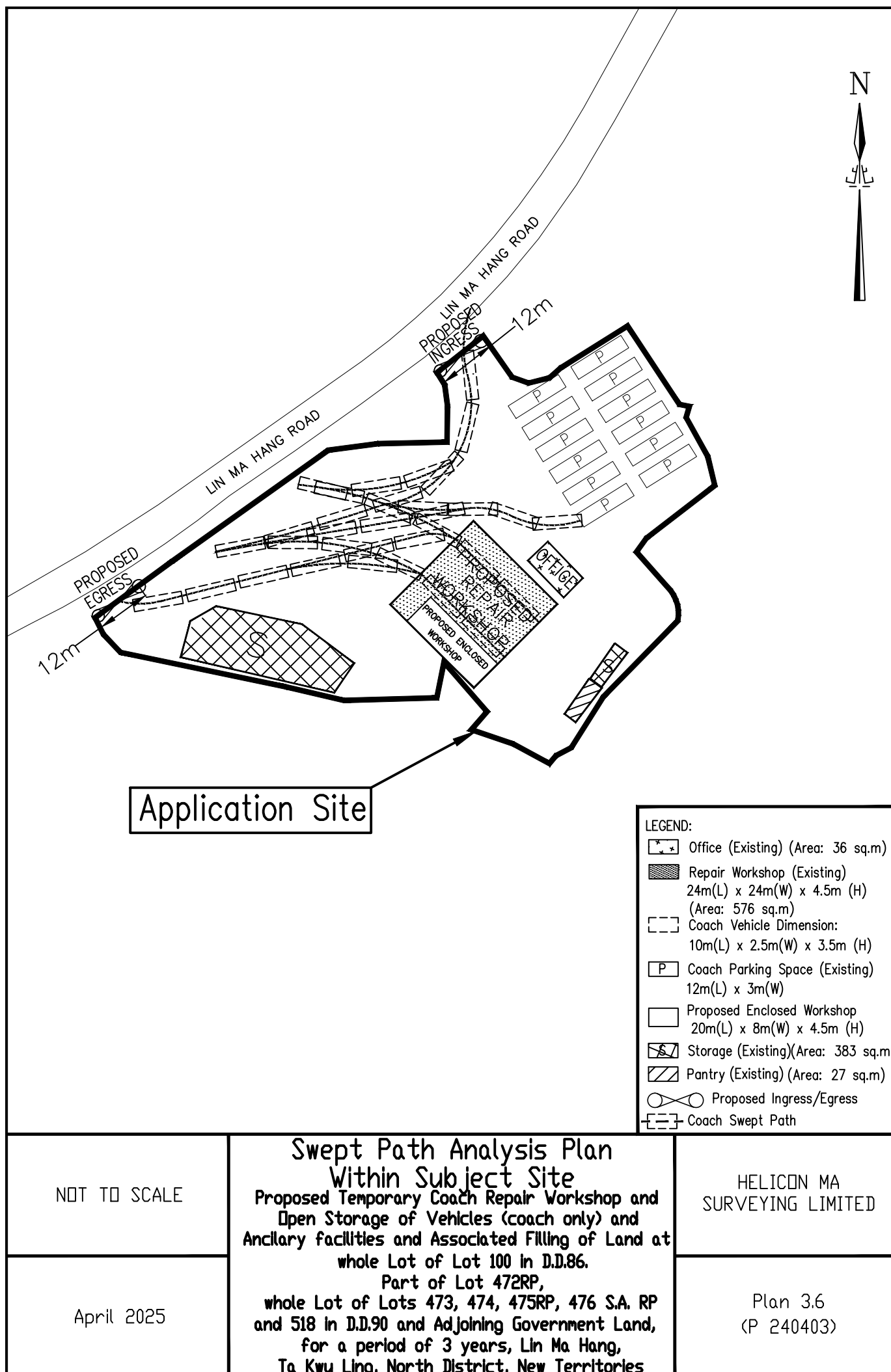
Plan 1
(P 240403)

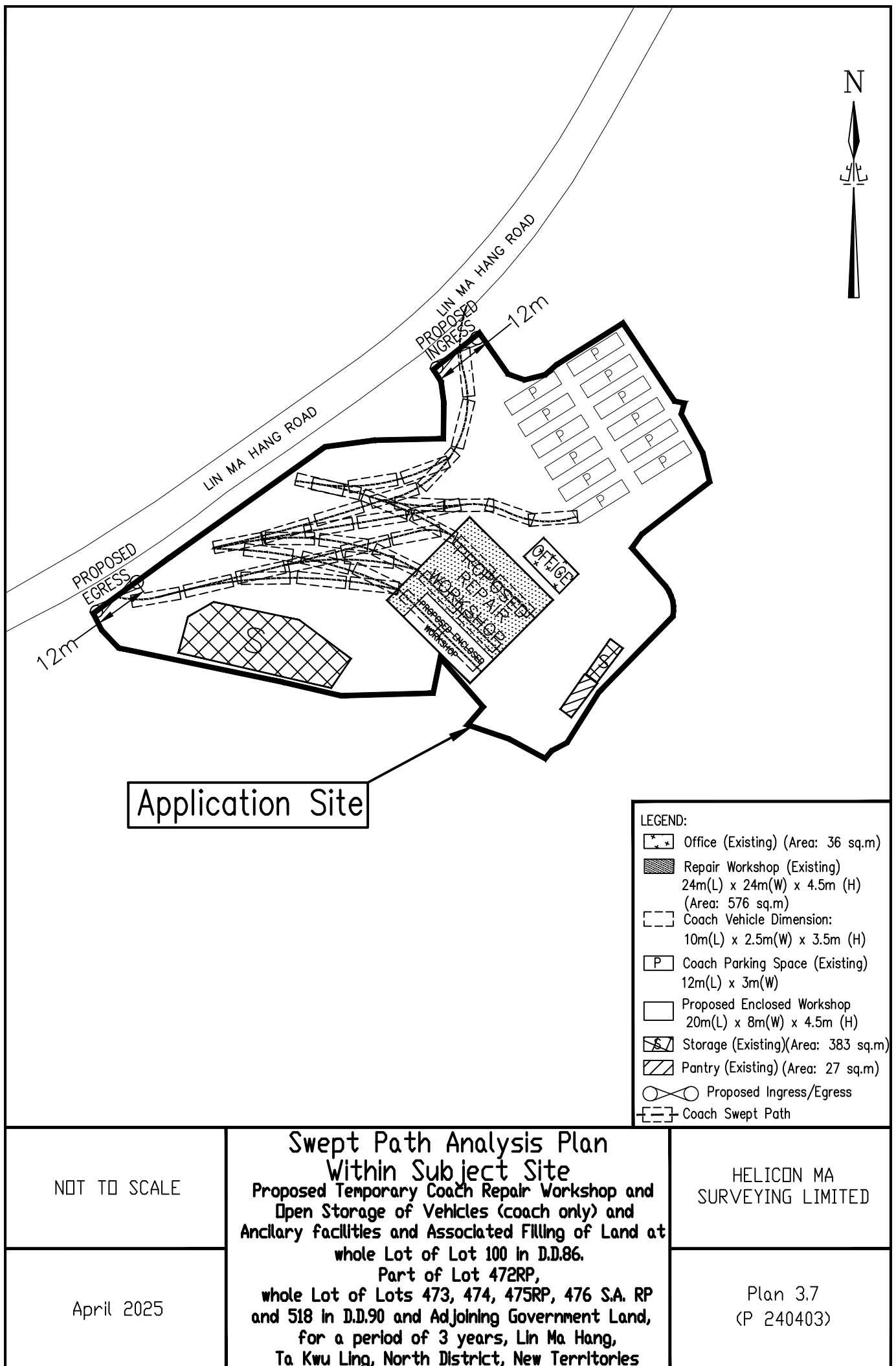


1:1000	<p align="center">Site Plan</p> <p align="center">Proposed Temporary Coach Repair Workshop and Open Storage of Vehicles (coach only) and Ancillary facilities and Associated Filling of Land at whole Lot of Lot 100 in D.D.86.</p> <p align="center">Part of Lot 472RP, whole Lot of Lots 473, 474, 475RP, 476 S.A. RP and 518 in D.D.90 and Adjoining Government Land, for a period of 3 years, Lin Ma Hang, Ta Kwu Ling, North District, New Territories</p>	HELICON MA SURVEYING LIMITED
April 2025		Plan 2 (P 240403)











圖例 LEGEND:

- ★ Previous site of coach repair workshop at Ping Che D.D.82 Lot 1373

圖例 LEGEND:

- 新發展區界線
NDA BOUNDARY
- 擬議坪輦 / 打鼓嶺新發展區
PROPOSED PING CHE / TA KWU LING NDA

圖則名稱 drawing title

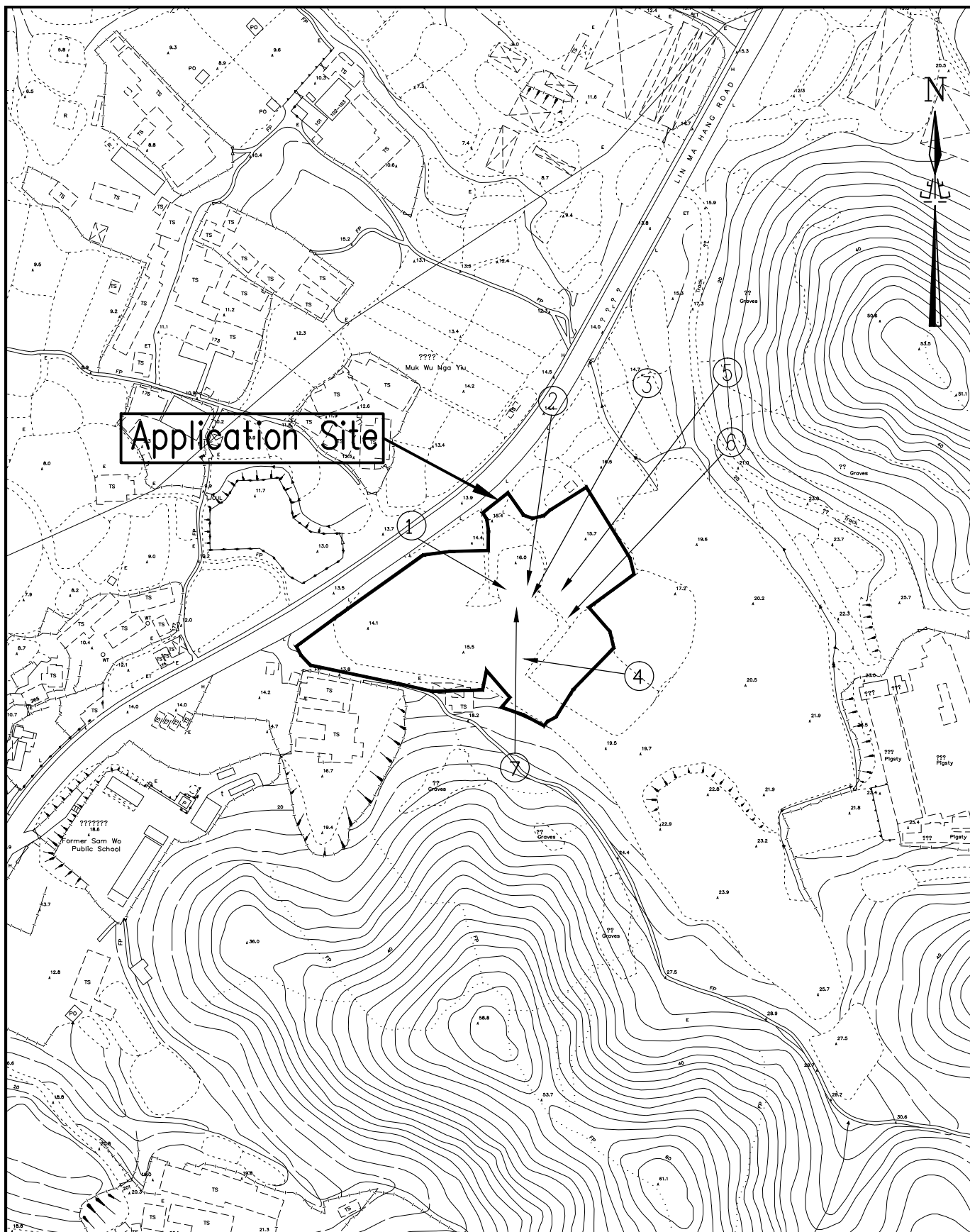
新界東北新發展區檢討研究
REVIEW STUDIES ON NORTH EAST NEW TERRITORIES NEW DEVELOPMENT AREAS
擬議坪輦 / 打鼓嶺新發展區
PROPOSED PING CHE / TA KWU LING NDA

編號 no.	日期 date	內容摘要 description	核對 checked	核准 approved
修訂 REVISION				
繪圖 drawn	簽署 initial	日期 date	項目編號 item no.	辦事處 office 新界西及北拓展處 NEW TERRITORIES NORTH AND WEST DEVELOPMENT OFFICE
K S LO	SIGNED	31.10.2007	726CL	
核對 checked	簽署 initial	日期 date	比例 scale	
Y F TANG	SIGNED	1.11.2007	1:10 000	
核准 approved	簽署 initial	日期 date	圖則編號 drawing no.	土木工程拓展署 CIVIL ENGINEERING AND DEVELOPMENT DEPARTMENT
C S LIU	SIGNED	1.11.2007	NTNZ 1542	

Extracted from CEDD Drawing No.

NTNZ 1542

Plan 4



NOT TO SCALE

April 2025

Site Photo (View Point)

Proposed Temporary Coach Repair Workshop and Ancillary coach parking and facilities and Associated Filling of Land at whole Lot of Lot 100 in D.D.86.

**Part of Lot 472RP,
whole Lot of Lots 473, 474, 475RP, 476 S.A. RP
and 518 in D.D.90 and Adjoining Government Land,
for a period of 3 years, Lin Ma Hang,
Ta Kwu Ling, North District, New Territories**

HELICON MA
SURVEYING LIMITED

Plan 5
(P 240403)



Photo (1)



Photo (2)



Photo (3)



Photo (4)

Site Photo (view points) – Proposed Temporary Coach Repair Workshop and Open Storage of Vehicles
(coach only) and Ancillary facilities and Associated Filling of Land



Photo (1)



Photo (2)



Photo (3)



Photo (4)

Site Photo (view points) – Proposed Temporary Coach Repair Workshop and Open Storage of Vehicles
(coach only) and Ancillary facilities and Associated Filling of Land



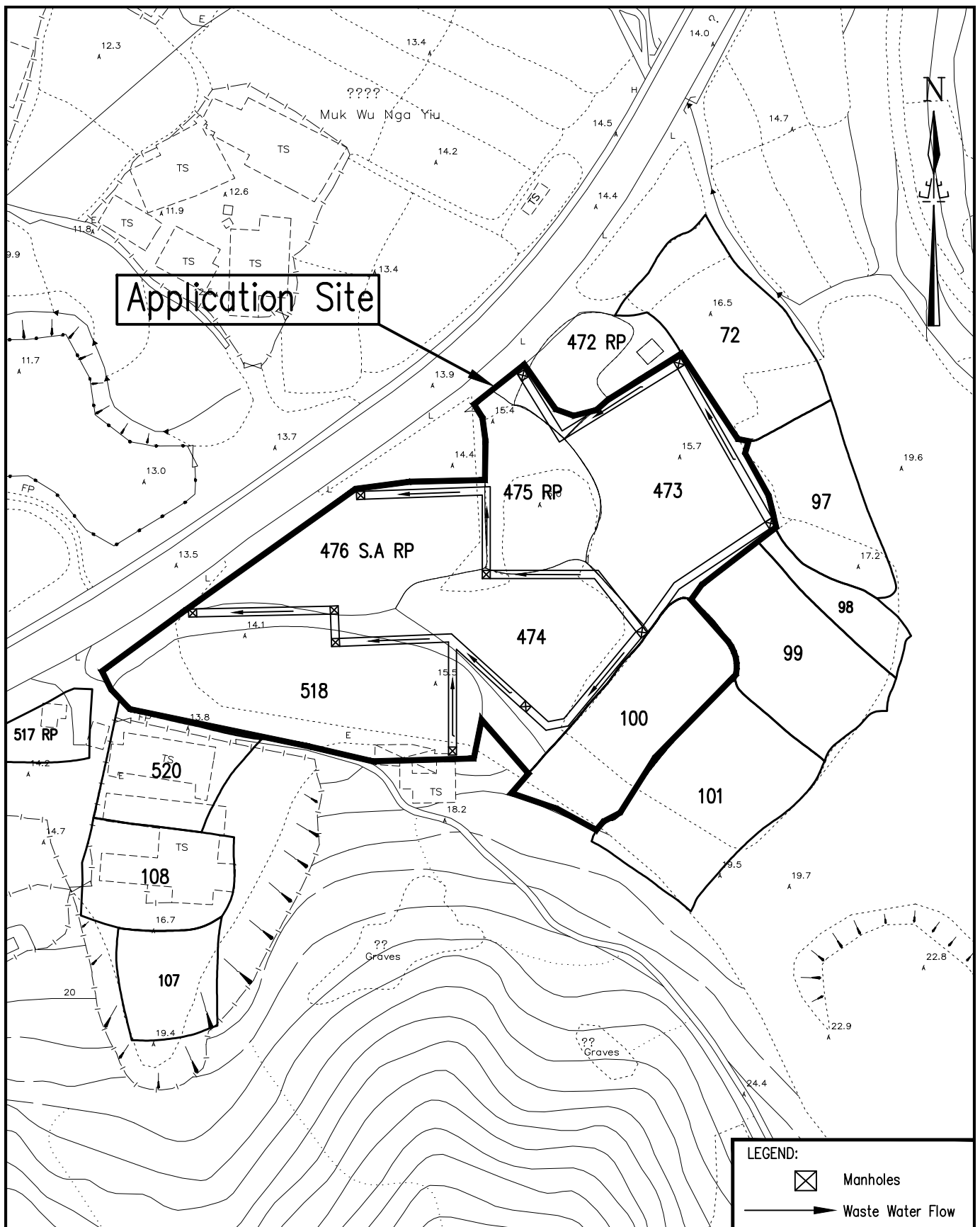
Photo (5)



Photo (6)



Site Photo (view points) – Proposed Temporary Coach Repair Workshop and Open Storage of Vehicles
(coach only) and Ancillary facilities and Associated Filling of Land



NOT TO SCALE

April 2025

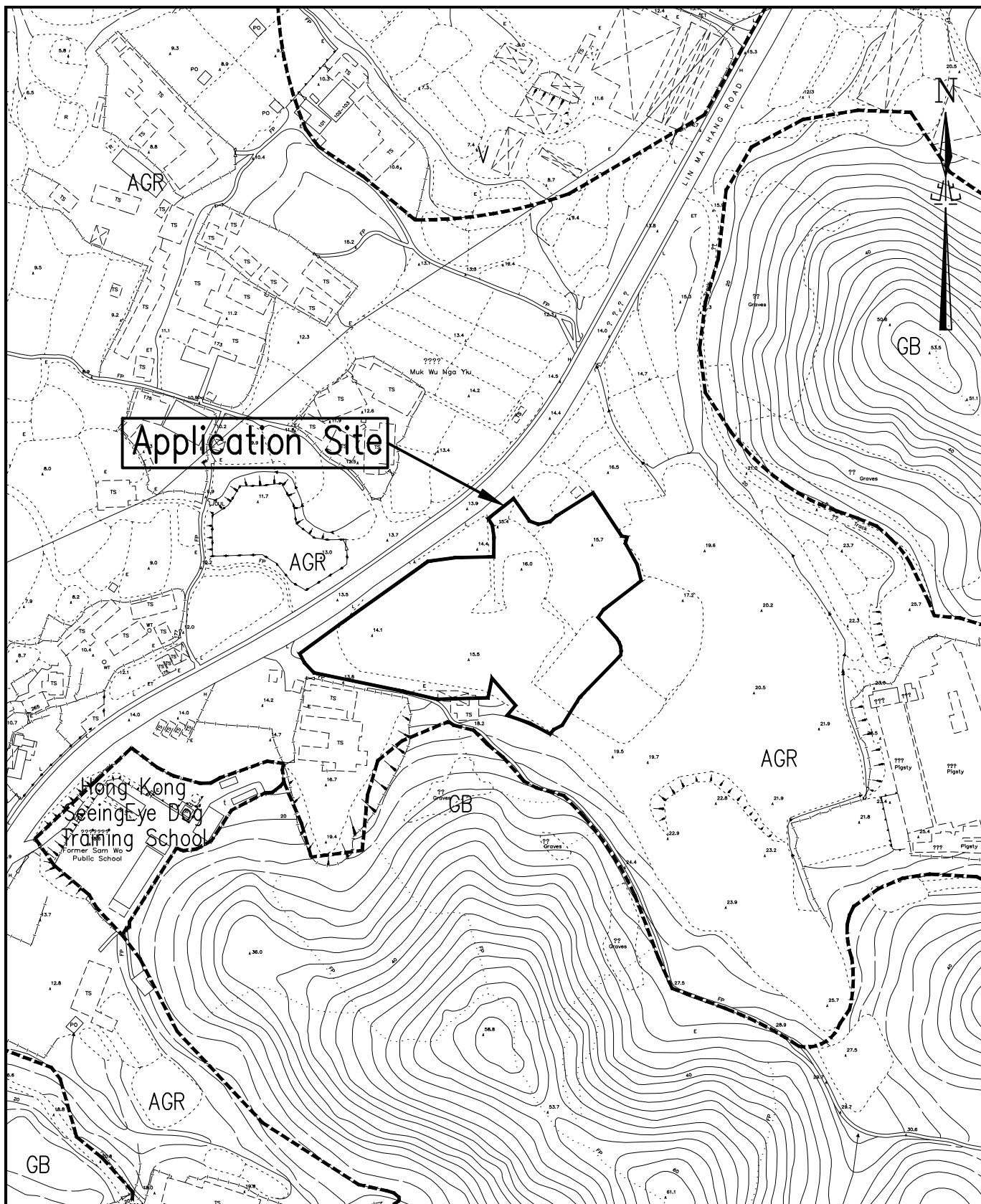
Drainage Proposal

**Proposed Temporary Coach Repair Workshop and
Open Storage of Vehicles (coach only) and
Ancillary facilities and Associated Filling of Land at
whole Lot of Lot 100 in D.D.86.**

**Part of Lot 472RP,
whole Lot of Lots 473, 474, 475RP, 476 S.A. RP
and 518 in D.D.90 and Adjoining Government Land,
for a period of 3 years, Lin Ma Hang,
Ta Kwu Ling, North District, New Territories**

HELICON MA
SURVEYING LIMITED

Plan 6
(P 240403)



Extracted from Draft Man Kam To Outline Zoning Plan No. S/NE-MKT/6

1:2000	<p>AREA SHOWING PROPOSED FILLING OF LAND (AREA: 5877 sq.m (about)) Proposed Temporary Coach Repair Workshop and Open Storage of Vehicles (coach only) and Ancillary facilities and Associated Filling of Land at whole Lot of Lot 100 in D.D.86.</p>	HELICON MA SURVEYING LIMITED
April 2025	<p>Part of Lot 472RP, whole Lot of Lots 473, 474, 475RP, 476 S.A. RP and 518 in D.D.90 and Adjoining Government Land, for a period of 3 years, Lin Ma Hang, Ta Kwu Ling, North District, New Territories</p>	Plan7 (P 240403)

