

**Structure 1,**  
tools storage units  
GFA: about 15 sqm  
Height: about 2.6m  
No.of storey: 1

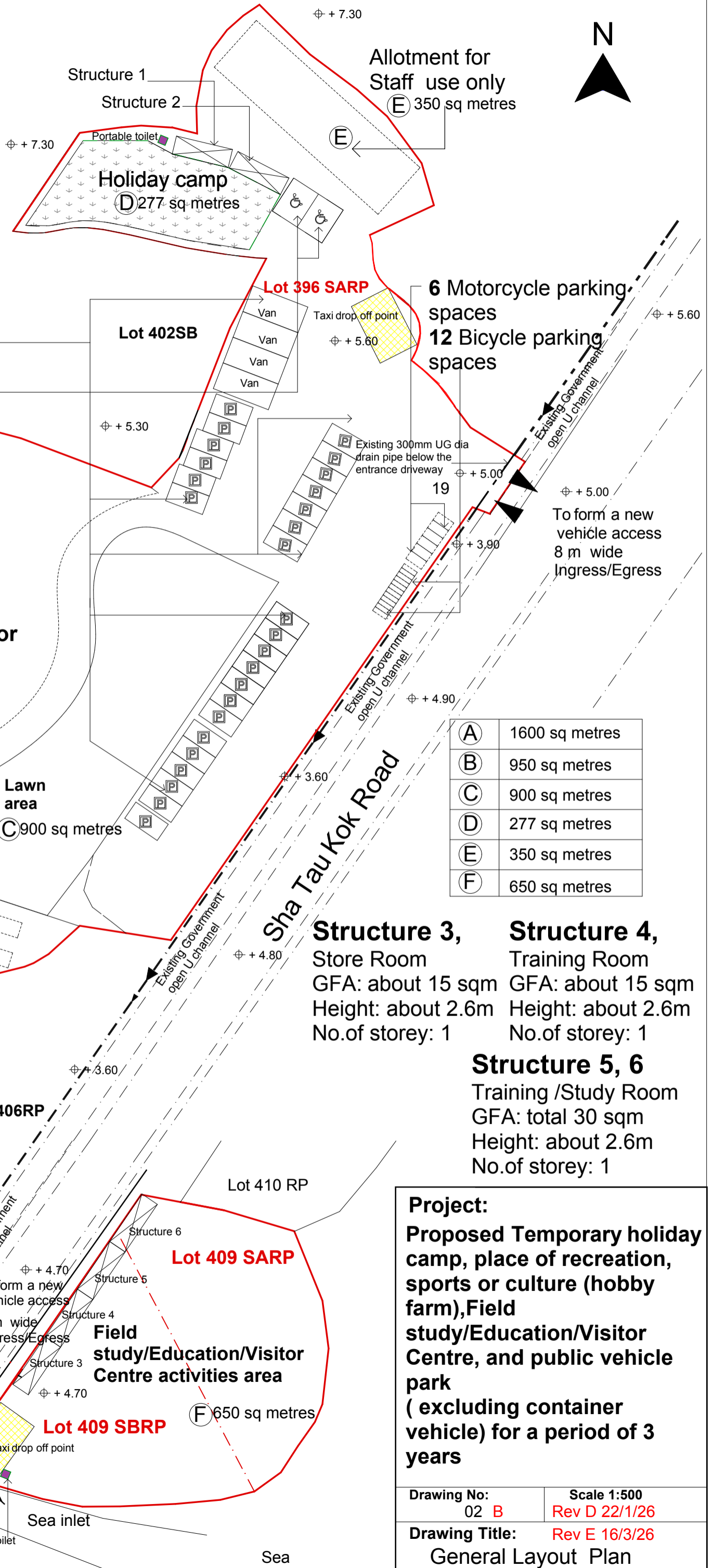
**Structure 2,**  
Toilets units and portable drinking  
water point  
GFA: about 15 sqm (total)  
Height: about 2.6m  
No.of storey: 1

**Private Car Parking Spaces**

26 parking spaces of 5mx 2.5m  
for private car  
4 parking spaces of 7.5mx3.5m  
for Van  
2 parking spaces of 5m x 3.8m  
for disabled

**Field  
study/Education/Visitor  
Centre activities area**

(A) 1600 sq metres  
**Lot 404 SB**



Allotment for  
Staff use only  
(E) 350 sq metres

**Holiday camp**  
(D) 277 sq metres

**Lot 396 SARP**

**6 Motorcycle parking  
spaces**  
**12 Bicycle parking  
spaces**

**Lot 402SB**

Taxi drop off point  
(+ 5.60)

(+ 5.30)

Existing 300mm UG dia  
drain pipe below the  
entrance driveway  
(+ 5.00)

19

To form a new  
vehicle access  
8 m wide  
Ingress/Egress  
(+ 5.00)

(+ 5.00)

(+ 4.90)

(A)	1600 sq metres
(B)	950 sq metres
(C)	900 sq metres
(D)	277 sq metres
(E)	350 sq metres
(F)	650 sq metres

**Lawn  
area**  
(C) 900 sq metres  
(+ 5.40)

(+ 5.30)

**Hobby Farm**  
(B) 950 sq metres

Allotment  
small  
4m x 2m  
(+ 5.20)

**Lot 405RP**

**Lot 406RP**

**Lot 410 RP**

**Structure 3,**  
Store Room  
GFA: about 15 sqm  
Height: about 2.6m  
No.of storey: 1

**Structure 4,**  
Training Room  
GFA: about 15 sqm  
Height: about 2.6m  
No.of storey: 1

**Structure 5, 6**  
Training /Study Room  
GFA: total 30 sqm  
Height: about 2.6m  
No.of storey: 1

**Field  
study/Education/Visitor  
Centre activities area**

**Lot 409 SBRP**

(F) 650 sq metres

To widen the  
existing  
footpath  
from 600mm  
to 1200 mm  
12

To form a new  
vehicle access  
8 m wide  
Ingress/Egress  
(+ 3.30)

Existing catchpit  
Existing 300 mm  
dia UG  
Footpath  
access (+ 4.60)

River Culvert

Existing 600 mm  
dia UG

Sea inlet

Portable toilet

Sea

**Project:**  
**Proposed Temporary holiday  
camp, place of recreation,  
sports or culture (hobby  
farm), Field  
study/Education/Visitor  
Centre, and public vehicle  
park  
(excluding container  
vehicle) for a period of 3  
years**

Drawing No: 02 B	Scale 1:500 Rev D 22/1/26
Drawing Title: General Layout Plan	Rev E 16/3/26