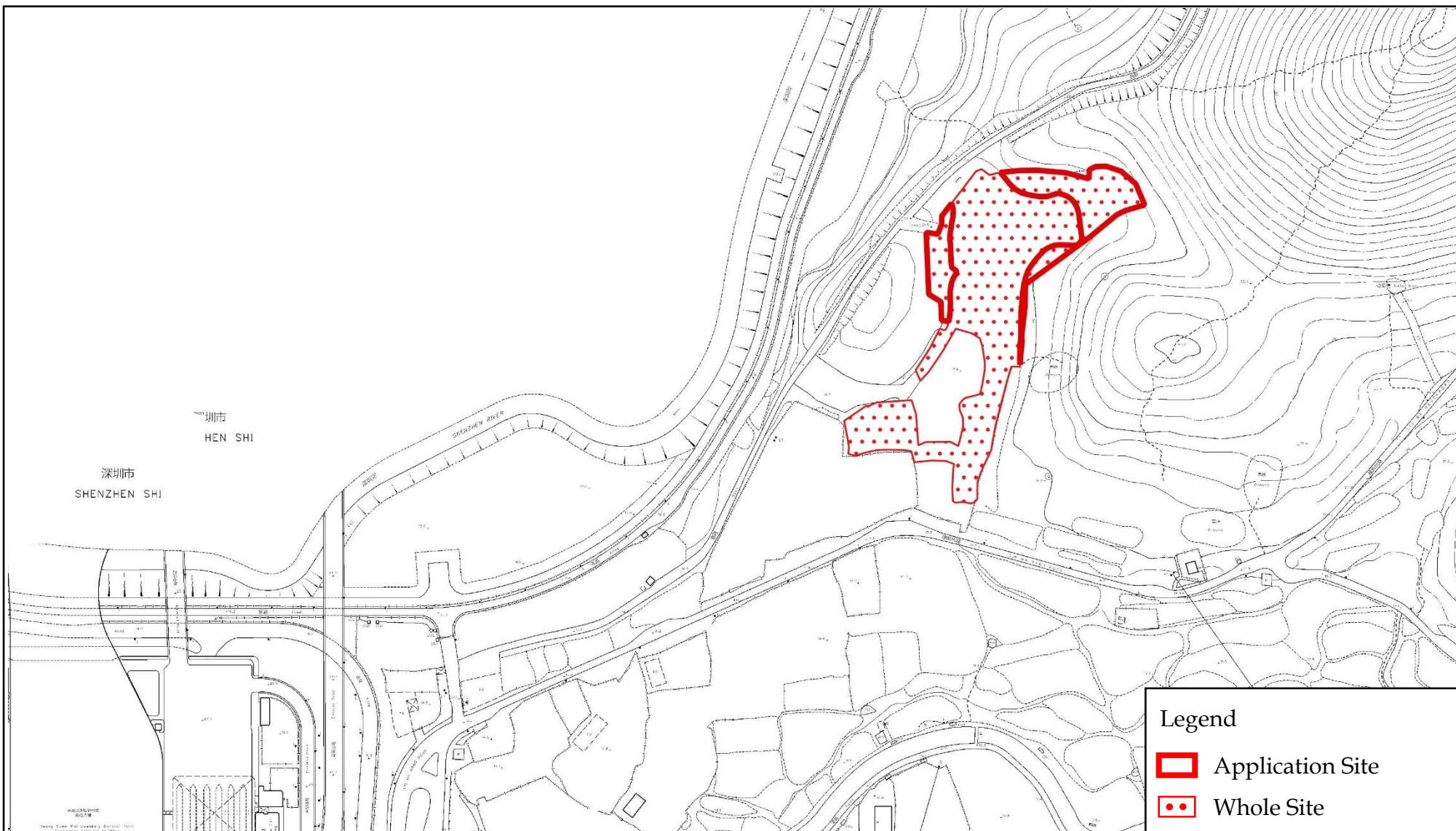




## **ANNEX 2**

### **REVISED PLANS**



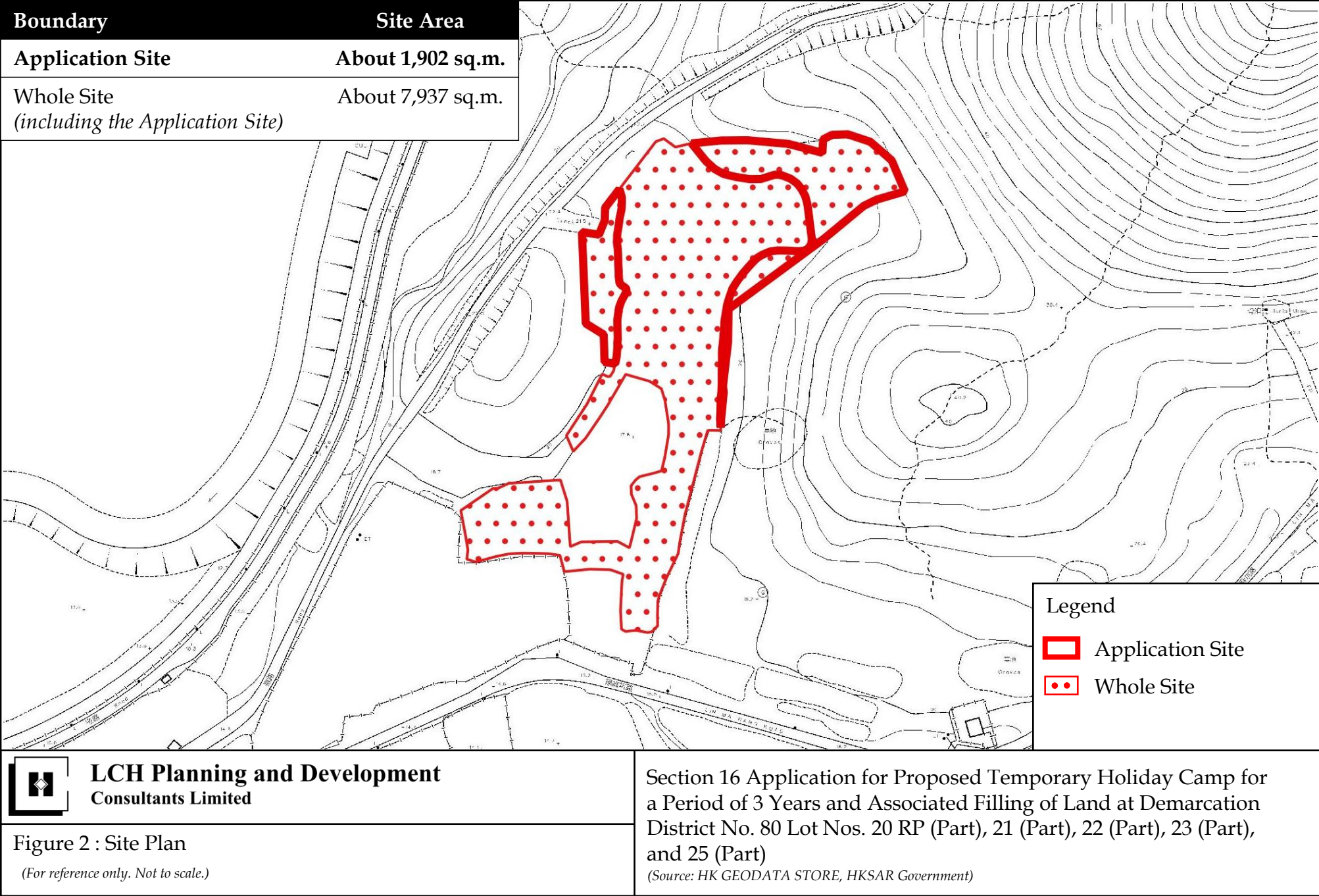
**LCH Planning and Development  
Consultants Limited**

**Figure 1 : Location Plan**

*(For reference only. Not to scale.)*

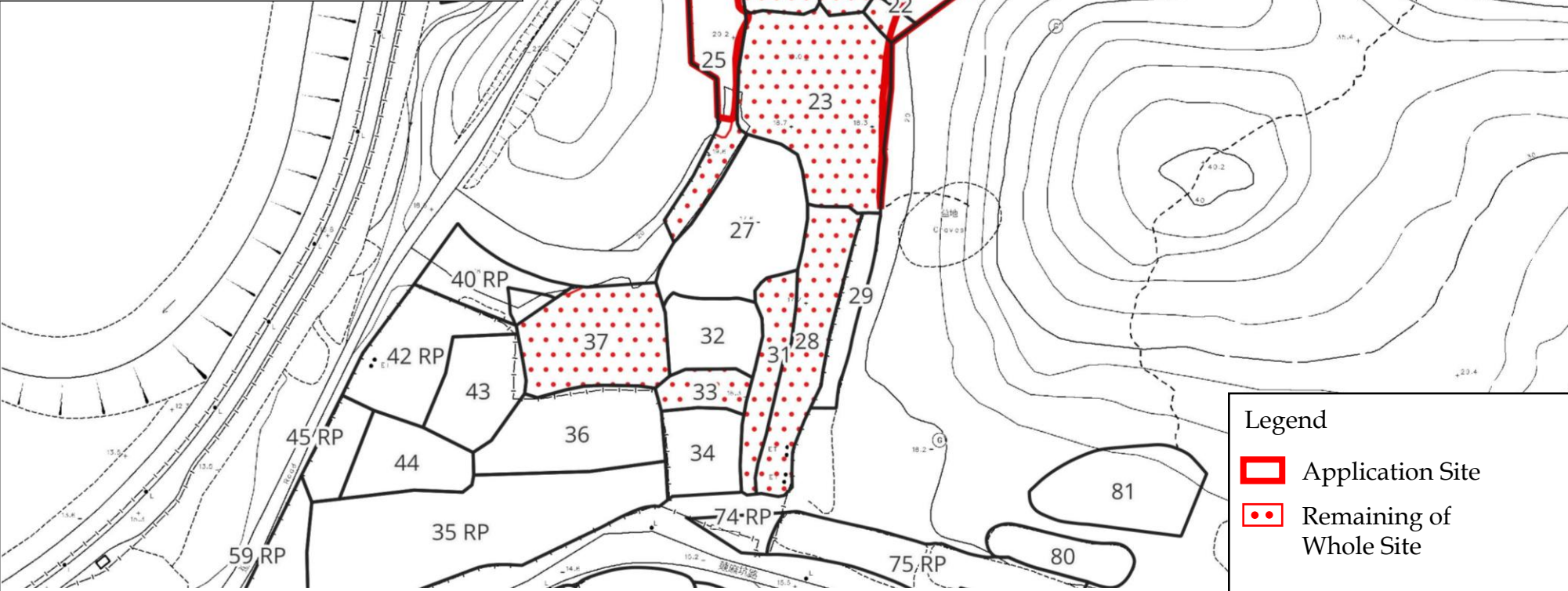
**Section 16 Application for Proposed Temporary Holiday Camp for a Period of 3 Years and Associated Filling of Land at Demarcation District No. 80 Lot Nos. 20 RP (Part), 21 (Part), 22 (Part), 23 (Part), and 25 (Part)**

*(Source: HK GEODATA STORE, HKSAR Government)*





Lots Within Application Site	Site Area
20 RP (Part)	About 44 sq.m.
21 (Part)	About 1,333 sq.m.
22 (Part)	About 24 sq.m.
23 (Part)	About 41 sq.m.
25 (Part)	About 460 sq.m.



- Legend**
- Application Site
  - Remaining of Whole Site



**LCH Planning and Development  
Consultants Limited**

**Figure 3 : Land Status**

*(For reference only. Not to scale.)*

Section 16 Application for Proposed Temporary Holiday Camp for a Period of 3 Years and Associated Filling of Land at Demarcation District No. 80 Lot Nos. 20 RP (Part), 21 (Part), 22 (Part), 23 (Part), and 25 (Part)

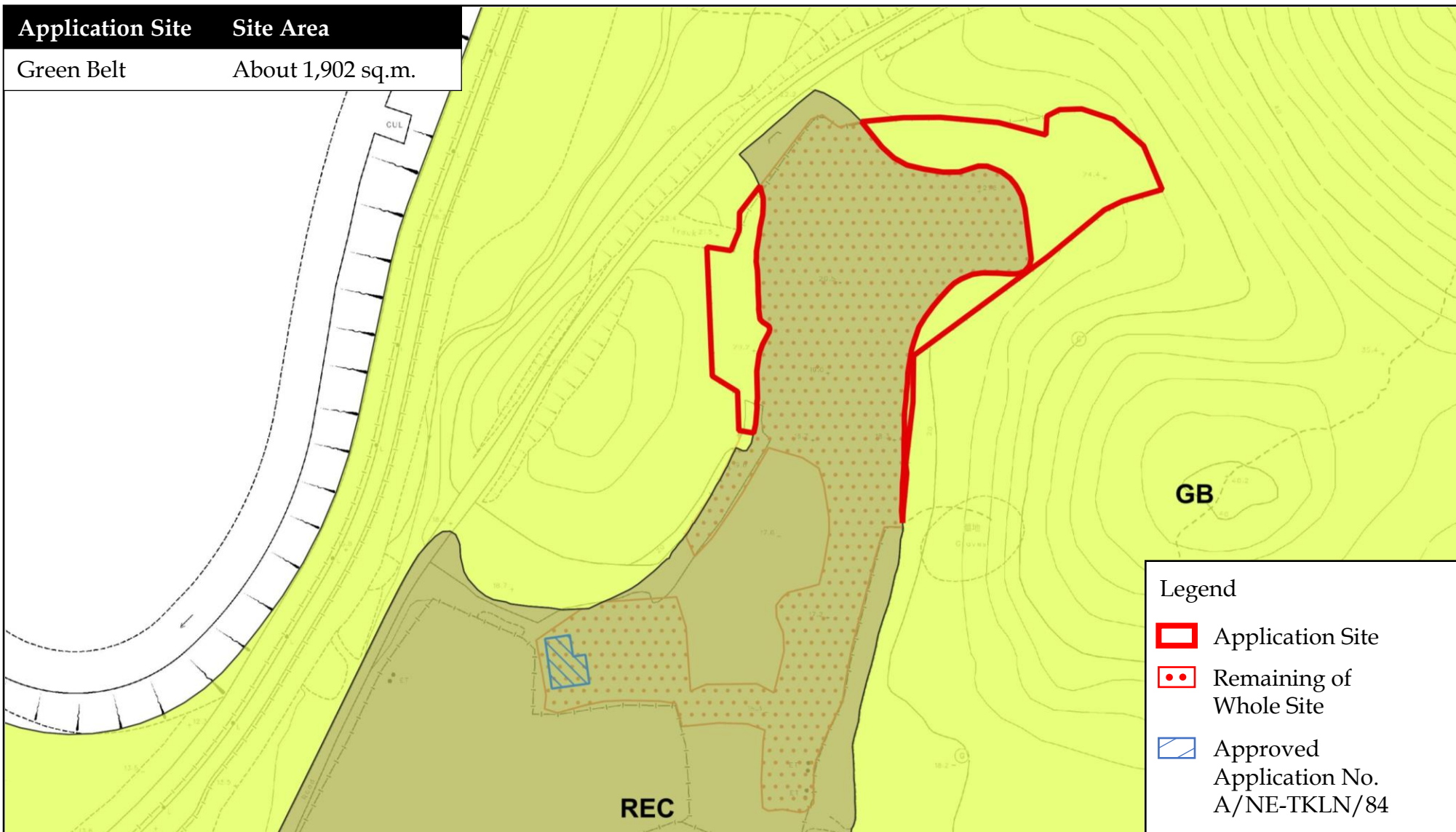
*(Source: HK GEODATA STORE, HKSAR Government)*

Application Site

Site Area

Green Belt

About 1,902 sq.m.



**LCH Planning and Development  
Consultants Limited**

Figure 4 : Extract of OZP

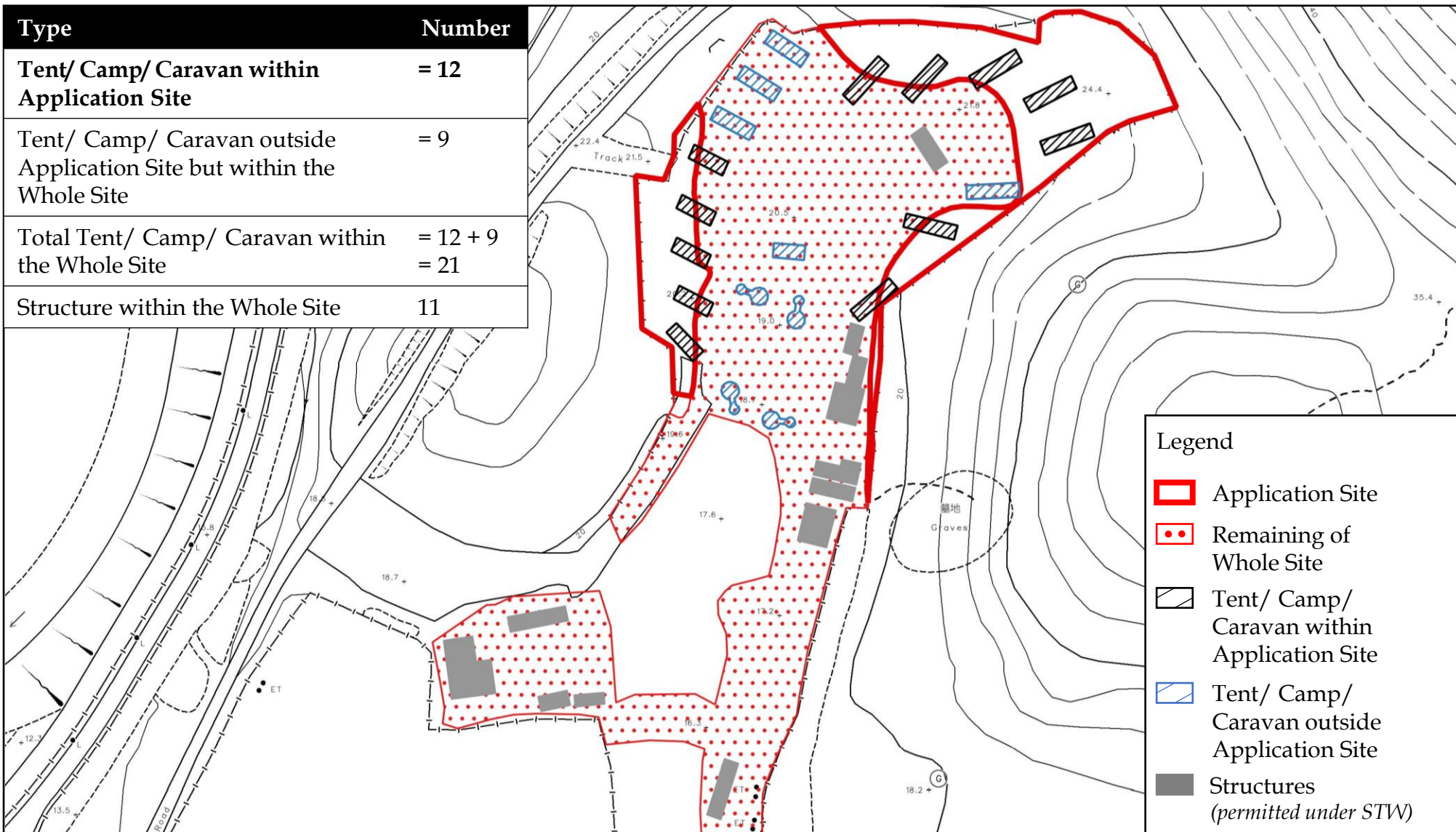
(For reference only. Not to scale.)

Section 16 Application for Proposed Temporary Holiday Camp for a Period of 3 Years and Associated Filling of Land at Demarcation District No. 80 Lot Nos. 20 RP (Part), 21 (Part), 22 (Part), 23 (Part), and 25 (Part)

(Source: HK GEODATA STORE & Town Planning Board, HKSAR Government)



Type	Number
Tent/ Camp/ Caravan within Application Site	= 12
Tent/ Camp/ Caravan outside Application Site but within the Whole Site	= 9
Total Tent/ Camp/ Caravan within the Whole Site	= 12 + 9 = 21
Structure within the Whole Site	11



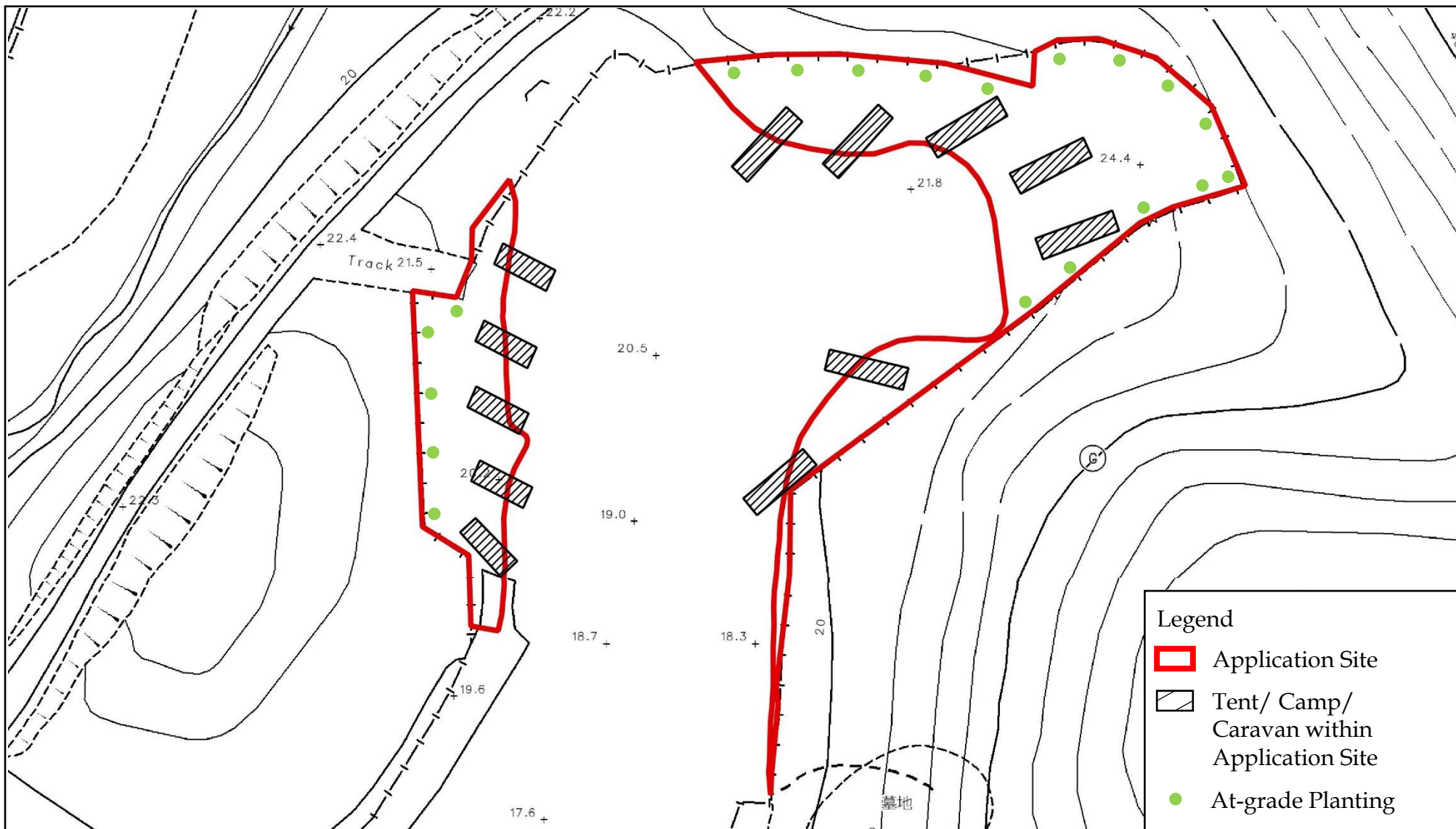
**LCH Planning and Development  
Consultants Limited**

**Figure 5 : Indicative Tent/ Camp/ Caravan Layout Plan**

(For reference only. Not to scale.)

Section 16 Application for Proposed Temporary Holiday Camp for a Period of 3 Years and Associated Filling of Land at Demarcation District No. 80 Lot Nos. 20 RP (Part), 21 (Part), 22 (Part), 23 (Part), and 25 (Part)

(Source: HK GEODATA STORE & Town Planning Board, HKSAR Government)



**LCH Planning and Development  
Consultants Limited**

**Figure 6 : Landscape Proposal**

*(For reference only. Not to scale.)*

Section 16 Application for Proposed Temporary Holiday Camp for a Period of 3 Years and Associated Filling of Land at Demarcation District No. 80 Lot Nos. 20 RP (Part), 21 (Part), 22 (Part), 23 (Part), and 25 (Part)

*(Source: HK GEODATA STORE & Town Planning Board, HKSAR Government)*