



<div>PLANNING CONSULTANT</div> <div></div>	<div>PROJECT</div> <div>PROPOSED TEMPORARY MEDIUM GOODS VEHICLES AND CONTAINER TRACTOR/TRAILER PARK WITH ANCILLARY FACILITIES AND ASSOCIATED FILLING OF LAND FOR A PERIOD OF 3 YEARS</div>	<div>ADDRESS</div> <div>VARIOUS LOTS IN D.D. 84 AND ADJOINING GOVERNMENT LAND, TA KWU LING, NEW TERRITORIES</div>	<div>SCALE</div> <div>1 : 3000 @ A4</div>		<div>TITLE</div> <div>LOCATION PLAN</div>		<div><div>NORTH</div></div>
			<div>DRAWN BY</div> <div>MN</div>	<div>DATE</div> <div>20.8.2025</div>			
			<div>REVISED BY</div> <div></div>	<div>DATE</div> <div></div>	<div>DWG NO.</div> <div>PLAN 1</div>	<div>VER.</div> <div>001</div>	

ZONING OF THE APPLICATION SITE

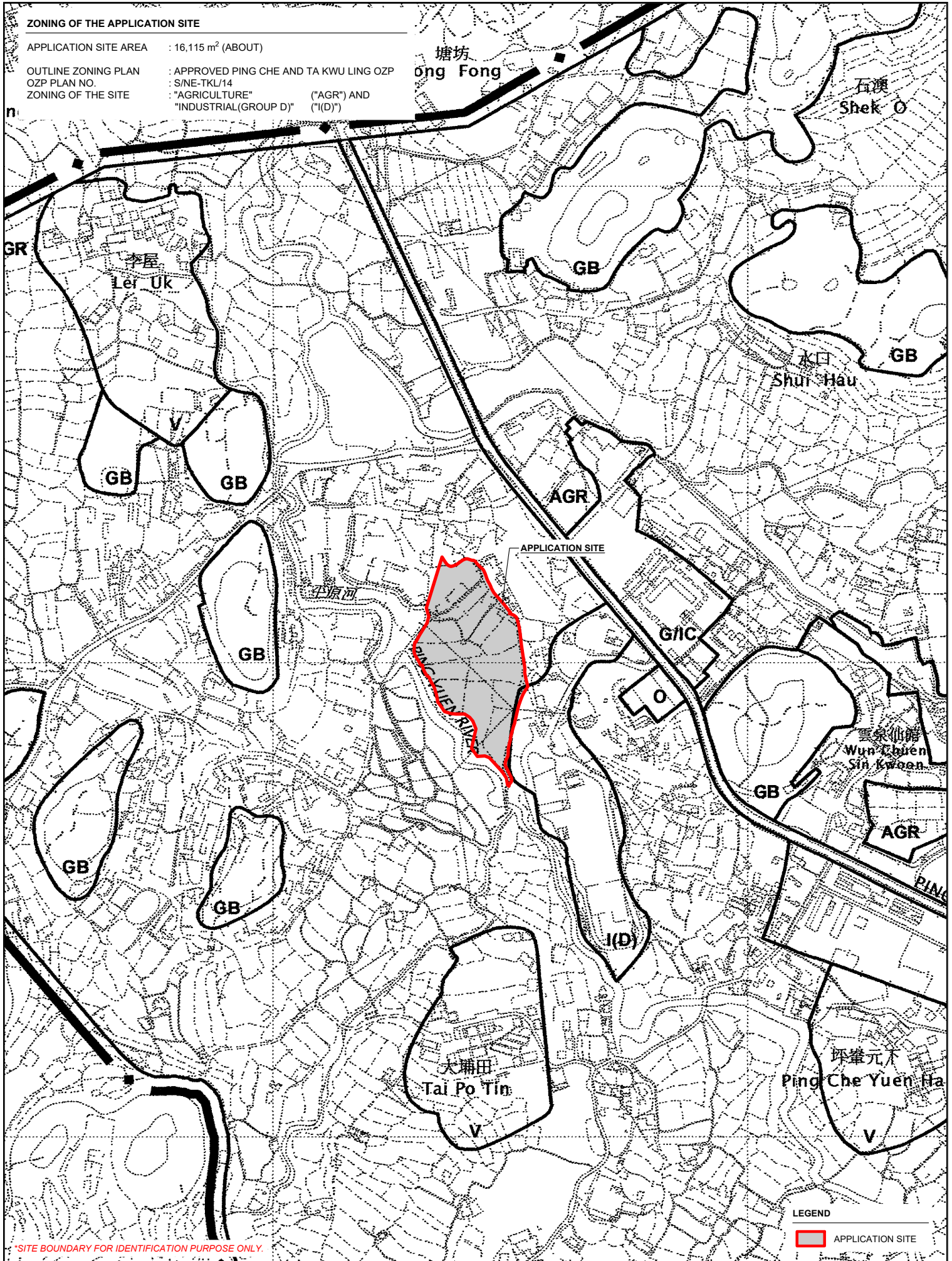
APPLICATION SITE AREA : 16,115 m<sup>2</sup> (ABOUT)

OUTLINE ZONING PLAN : APPROVED PING CHE AND TA KWU LING OZP

OZP PLAN NO. : S/NE-TKL/14

ZONING OF THE SITE



"AGRICULTURE" ("AGR") AND  
"INDUSTRIAL(GROUP D)" ("I(D)")



\*SITE BOUNDARY FOR IDENTIFICATION PURPOSE ONLY.

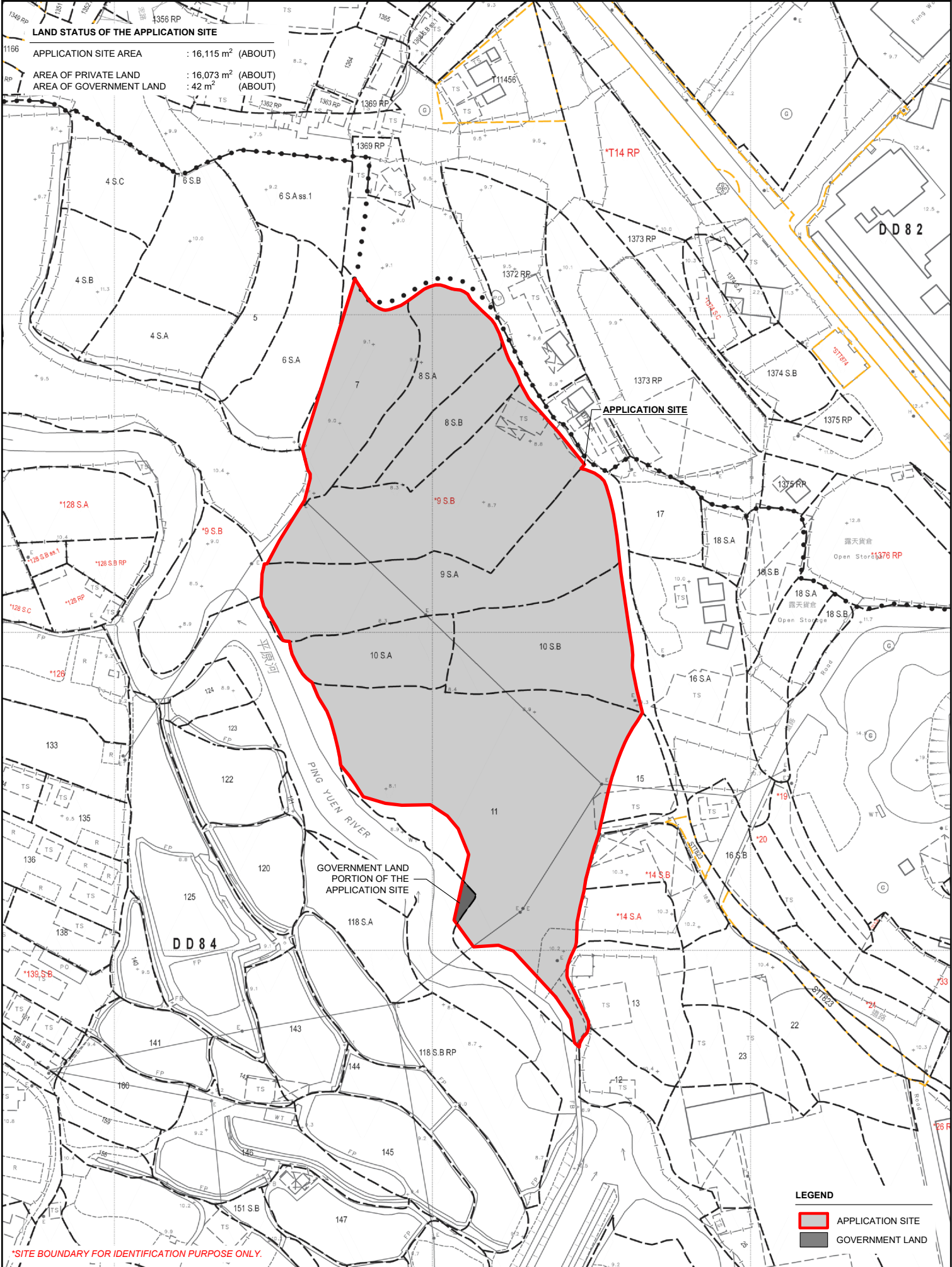
LEGEND

APPLICATION SITE

<div></div>	PROJECT PROPOSED TEMPORARY MEDIUM GOODS VEHICLES AND CONTAINER TRACTOR/TRAILER PARK WITH ANCILLARY FACILITIES AND ASSOCIATED FILLING OF LAND FOR A PERIOD OF 3 YEARS	ADDRESS VARIOUS LOTS IN D.D. 84 AND ADJOINING GOVERNMENT LAND, TA KWU LING, NEW TERRITORIES	SCALE 1 : 5000 @ A4		TITLE ZONING PLAN		<div></div>
			DRAWN BY MN	DATE 20.8.2025			
			REVISED BY	DATE	DWG NO. PLAN 2	VER. 001	









TOWN PLANNING BOARD GUIDELINES NO. 13G FOR  
APPLICATION FOR OPEN STORAGE AND PORT BACK-UP USES  
UNDER S.16 OF THE TOWN PLANNING ORDINANCE

APPLICATION SITE AREA : 16,115 m<sup>2</sup> (ABOUT)





CATEGORY OF SITE : CATEGORY 1 AREA;  
CATEGORY 2 AREA; AND  
CATEGORY 3 AREA

Caritas Fung Wong

APPLICATION SITE

Open  
Storage

TPB Guidelines No. 13G

-  Category 1 Areas
-  Category 2 Areas
-  Category 3 Areas
-  Category 4 Areas

LEGEND

 APPLICATION SITE

\*SITE BOUNDARY FOR IDENTIFICATION PURPOSE ONLY.

PLANNING CONSULTANT



PROJECT

PROPOSED TEMPORARY MEDIUM GOODS  
VEHICLES AND CONTAINER  
TRACTOR/TRAILER PARK WITH ANCILLARY  
FACILITIES AND ASSOCIATED FILLING OF  
LAND FOR A PERIOD OF 3 YEARS

ADDRESS

VARIOUS LOTS IN D.D. 84 AND ADJOINING  
GOVERNMENT LAND, TA KWU LING, NEW  
TERRITORIES

SCALE  
1 : 1500 @ A4

DRAWN BY  
MN

REVISED BY

DATE  
20.8.2025

DATE

TITLE  
TPB PG-NO. 13G

DWG NO.  
PLAN 4

VER.  
001

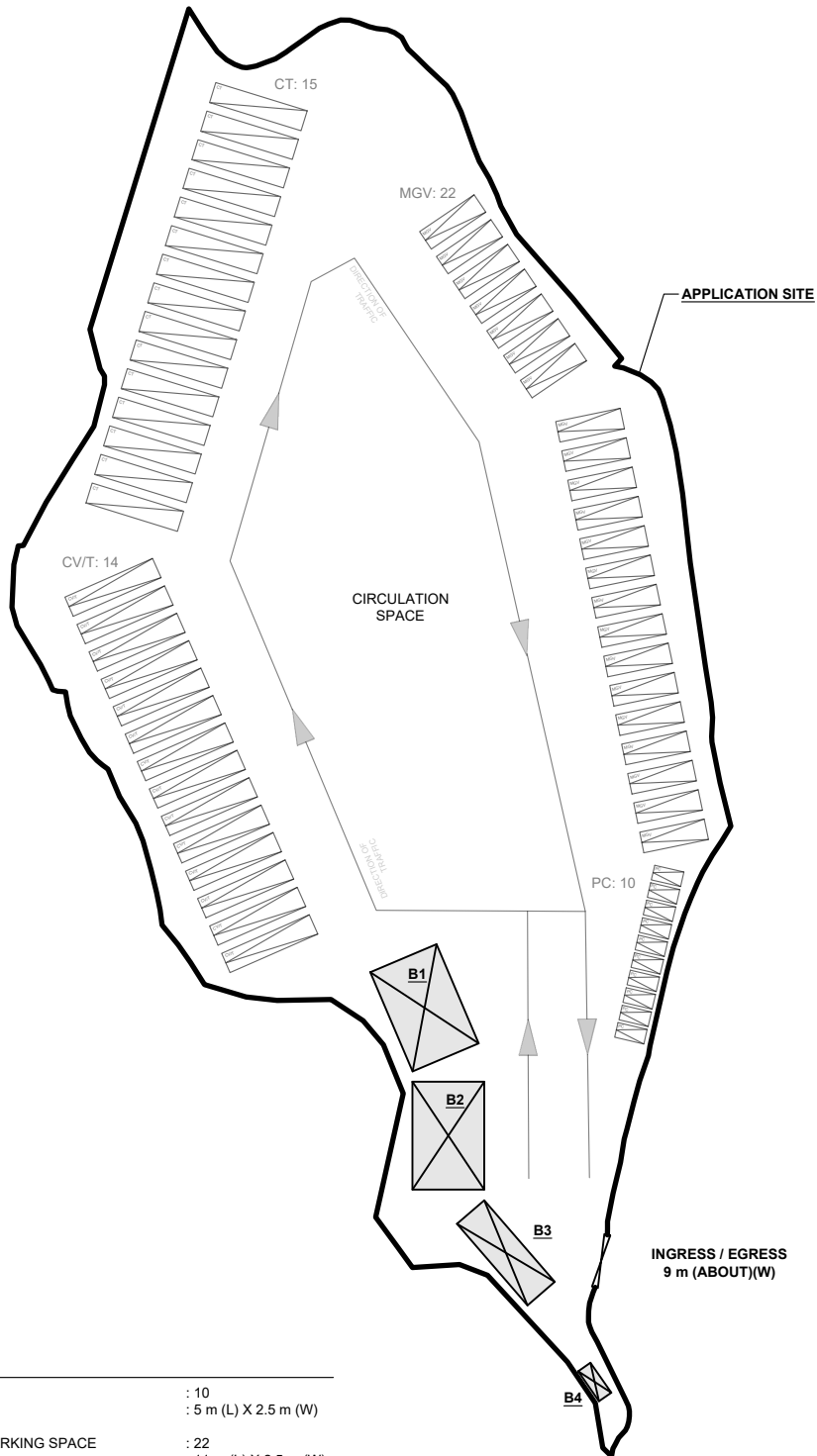




DEVELOPMENT PARAMETERS

APPLICATION SITE AREA	: 16,115 m <sup>2</sup>	(ABOUT)
COVERED AREA	: 555 m <sup>2</sup>	(ABOUT)
UNCOVERED AREA	: 15,560 m <sup>2</sup>	(ABOUT)
PLOT RATIO	: 0.03	(ABOUT)
SITE COVERAGE	: 3 %	(ABOUT)
NO. OF STRUCTURE	: 4	
DOMESTIC GFA	: NOT APPLICABLE	
NON-DOMESTIC GFA	: 555 m <sup>2</sup>	(ABOUT)
TOTAL GFA	: 555 m <sup>2</sup>	(ABOUT)
BUILDING HEIGHT	: 2.8 m - 4 m	(ABOUT)
NO. OF STOREY	: 1	

STRUCTURE	USE	COVERED AREA	GROSS FLOOR AREA	BUILDING HEIGHT
B1	SITE OFFICE AND WASHROOM	216 m <sup>2</sup> (ABOUT)	216 m <sup>2</sup> (ABOUT)	4 m (ABOUT)(1-STOREY)
B2	STAFF REST ROOM, WASHROOM AND GUARDROOM	216 m <sup>2</sup> (ABOUT)	216 m <sup>2</sup> (ABOUT)	4 m (ABOUT)(1-STOREY)
B3	SITE OFFICE AND WASHROOM	108 m <sup>2</sup> (ABOUT)	108 m <sup>2</sup> (ABOUT)	4 m (ABOUT)(1-STOREY)
B4	METER ROOM	15 m <sup>2</sup> (ABOUT)	15 m <sup>2</sup> (ABOUT)	2.8 m (ABOUT)(1-STOREY)
TOTAL		555 m <sup>2</sup> (ABOUT)	555 m <sup>2</sup> (ABOUT)	



PARKING PROVISIONS

NO. OF PRIVATE CAR PARKING SPACE	: 10
DIMENSION OF PARKING SPACE	: 5 m (L) X 2.5 m (W)
NO. OF MEDIUM GOODS VEHICLE (MGV) PARKING SPACE	: 22
DIMENSION OF PARKING SPACE	: 11 m (L) X 2.5 m (W)
NO. OF CONTAINER VEHICLE / TRACTOR (CV/T) PARKING SPACE	: 14
DIMENSION OF PARKING SPACE	: 16 m (L) X 2.5 m (W)
NO. OF CONTAINER TRAILER (CT) PARKING SPACE	: 15
DIMENSION OF PARKING SPACE	: 16 m (L) X 2.5 m (W)

LEGEND

	APPLICATION SITE
	STRUCTURE
	PARKING SPACE (PC)
	PARKING SPACE (MGV)
	PARKING SPACE (CV/T)
	PARKING SPACE (CT)
	INGRESS / EGRESS

\*SITE BOUNDARY FOR IDENTIFICATION PURPOSE ONLY.



PROJECT  
PROPOSED TEMPORARY MEDIUM GOODS VEHICLES AND CONTAINER TRACTOR/TRAILER PARK WITH ANCILLARY FACILITIES AND ASSOCIATED FILLING OF LAND FOR A PERIOD OF 3 YEARS

ADDRESS  
VARIOUS LOTS IN D.D. 84 AND ADJOINING GOVERNMENT LAND, TA KWU LING, NEW TERRITORIES

SCALE  
1 : 1250 @ A4  
DRAWN BY  
MN  
DATE  
20.8.2025  
REVISED BY  
DATE

TITLE  
LAYOUT PLAN  
DWG NO.  
PLAN 5  
VER.  
001


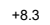


APPLICATION SITE BEFORE FILLING OF LAND

APPLICATION SITE AREA : 16,115 m<sup>2</sup> (ABOUT)  
SITE LEVELS BEFORE FILLING OF LAND : +8.3 mPD TO +8.9 mPD (ABOUT)



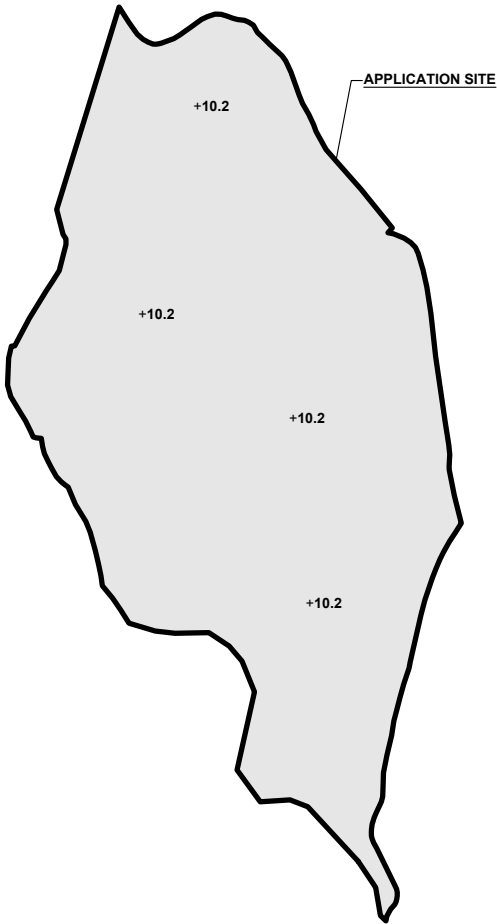
LEGEND

 APPLICATION SITE  
 +8.3 SITE LEVEL BEFORE FILLING



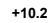
SITE LEVELS ARE FOR REFERENCE ONLY.  
\*SITE BOUNDARY FOR IDENTIFICATION PURPOSE ONLY.

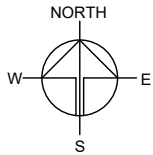
PROPOSED FILLING OF LAND AREA

APPLICATION SITE AREA : 16,115 m<sup>2</sup> (ABOUT)  
COVERED BY STRUCTURE : 555 m<sup>2</sup> (ABOUT)  
PROPOSED FILLED AREA : 16,115 m<sup>2</sup> (ABOUT)  
DEPTH OF LAND FILLING : NOT MORE THAN 1.9 m  
PROPOSED SITE LEVELS : +10.2 mPD (ABOUT)  
MATERIAL OF LAND FILLING : CONCRETE  
USE : SITE FORMATION OF STRUCTURES,  
PARKING SPACES, CIRCULATION AREA



LEGEND

 APPLICATION SITE  
 FILLING OF LAND AREA  
 +10.2 SITE LEVEL AFTER FILLING



PLANNING CONSULTANT



PROJECT

PROPOSED TEMPORARY  
MEDIUM GOODS VEHICLES AND  
CONTAINER TRACTOR/TRAILER  
PARK WITH ANCILLARY  
FACILITIES AND ASSOCIATED  
FILLING OF LAND FOR A PERIOD  
OF 3 YEARS

SITE LOCATION

VARIOUS LOTS IN D.D. 84 AND  
ADJOINING GOVERNMENT  
LAND, TA KWU LING, NEW  
TERRITORIES

SCALE

1 : 2000 @ A4

DRAWN BY MN DATE 20.8.2025

REVISED BY DATE

APPROVED BY DATE

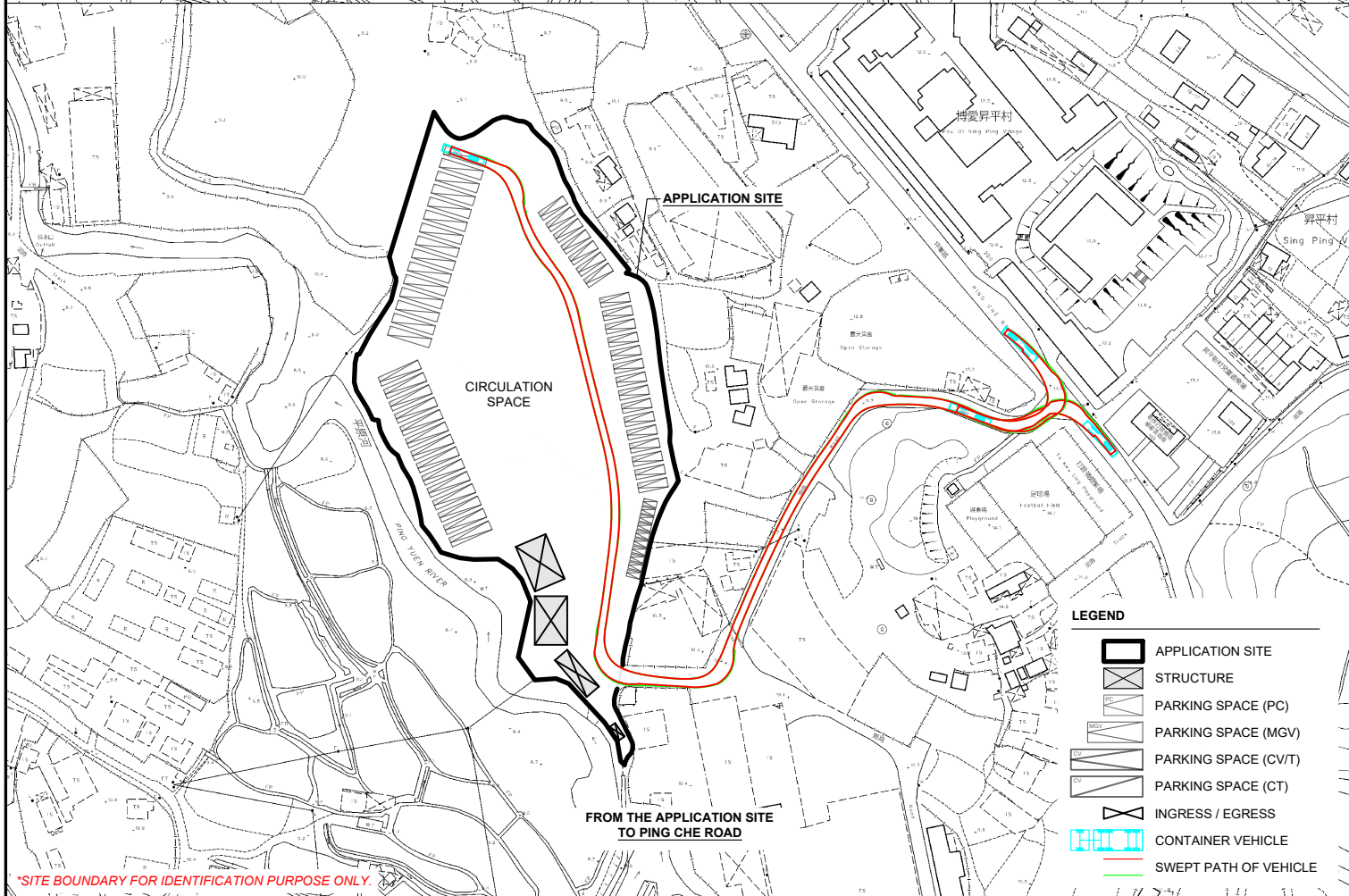
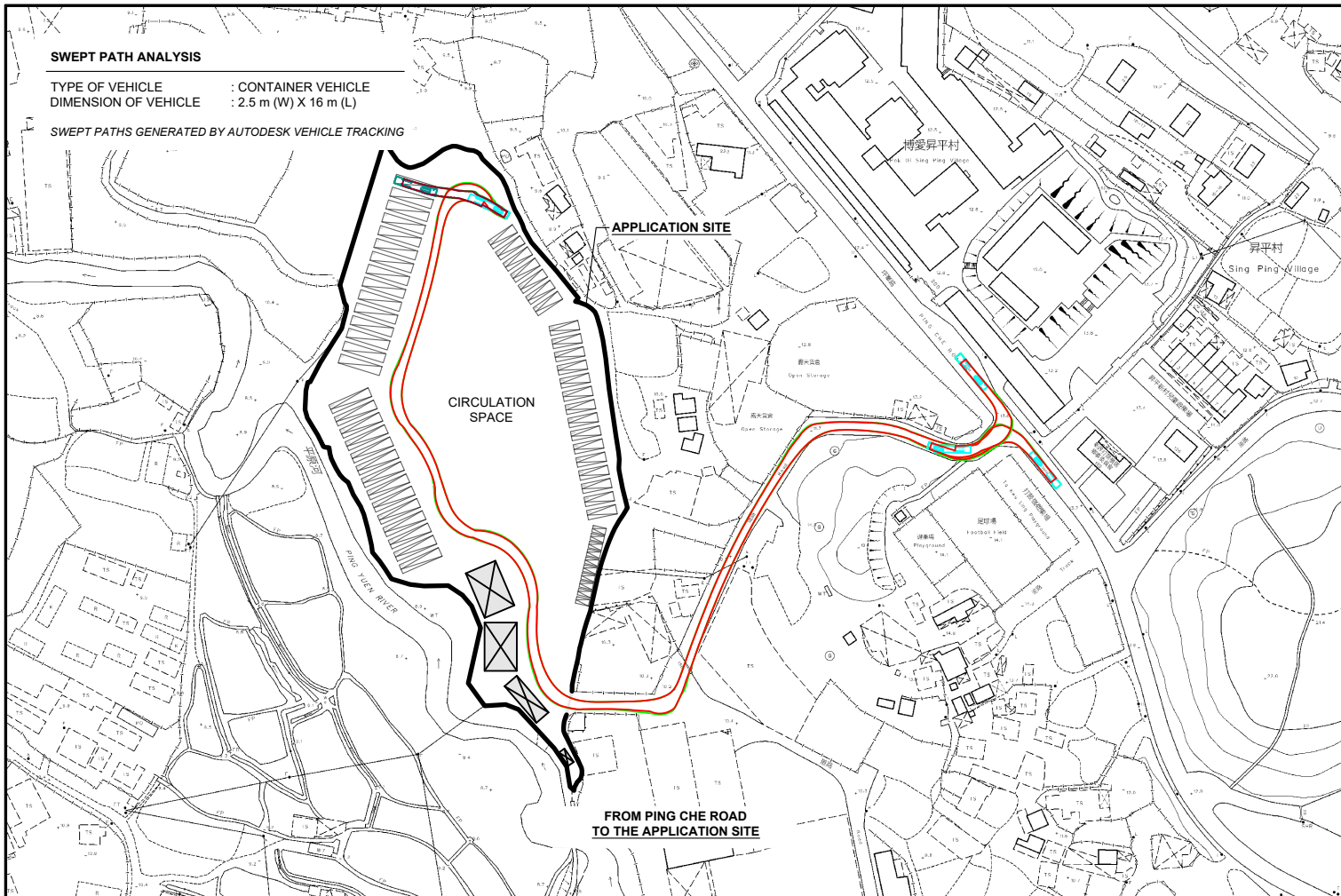
DWG. TITLE  
FILLING OF LAND

DWG NO. PLAN 6 VER. 001

# SWEPT PATH ANALYSIS

TYPE OF VEHICLE : CONTAINER VEHICLE  
 DIMENSION OF VEHICLE : 2.5 m (W) X 16 m (L)

SWEPT PATHS GENERATED BY AUTODESK VEHICLE TRACKING



## LEGEND

- APPLICATION SITE
- STRUCTURE
- PARKING SPACE (PC)
- PARKING SPACE (MGV)
- PARKING SPACE (CV/T)
- PARKING SPACE (CT)
- INGRESS / EGRESS
- CONTAINER VEHICLE
- SWEEP PATH OF VEHICLE

\*SITE BOUNDARY FOR IDENTIFICATION PURPOSE ONLY

PLANNING CONSULTANT



PROJECT

PROPOSED TEMPORARY MEDIUM GOODS VEHICLES AND CONTAINER TRACTOR/TRAILER PARK WITH ANCILLARY FACILITIES AND ASSOCIATED FILLING OF LAND FOR A PERIOD OF 3 YEARS

ADDRESS

VARIOUS LOTS IN D.D. 84 AND ADJOINING GOVERNMENT LAND, TA KWU LING, NEW TERRITORIES

SCALE  
 1 : 2500 @ A4

DRAWN BY  
 MN

DATE  
 20.8.2025

REVISED BY

DATE

TITLE  
 SWEPT PATH ANALYSIS

DWG NO.  
 PLAN 7

VER.  
 001

