

Private Car (In)

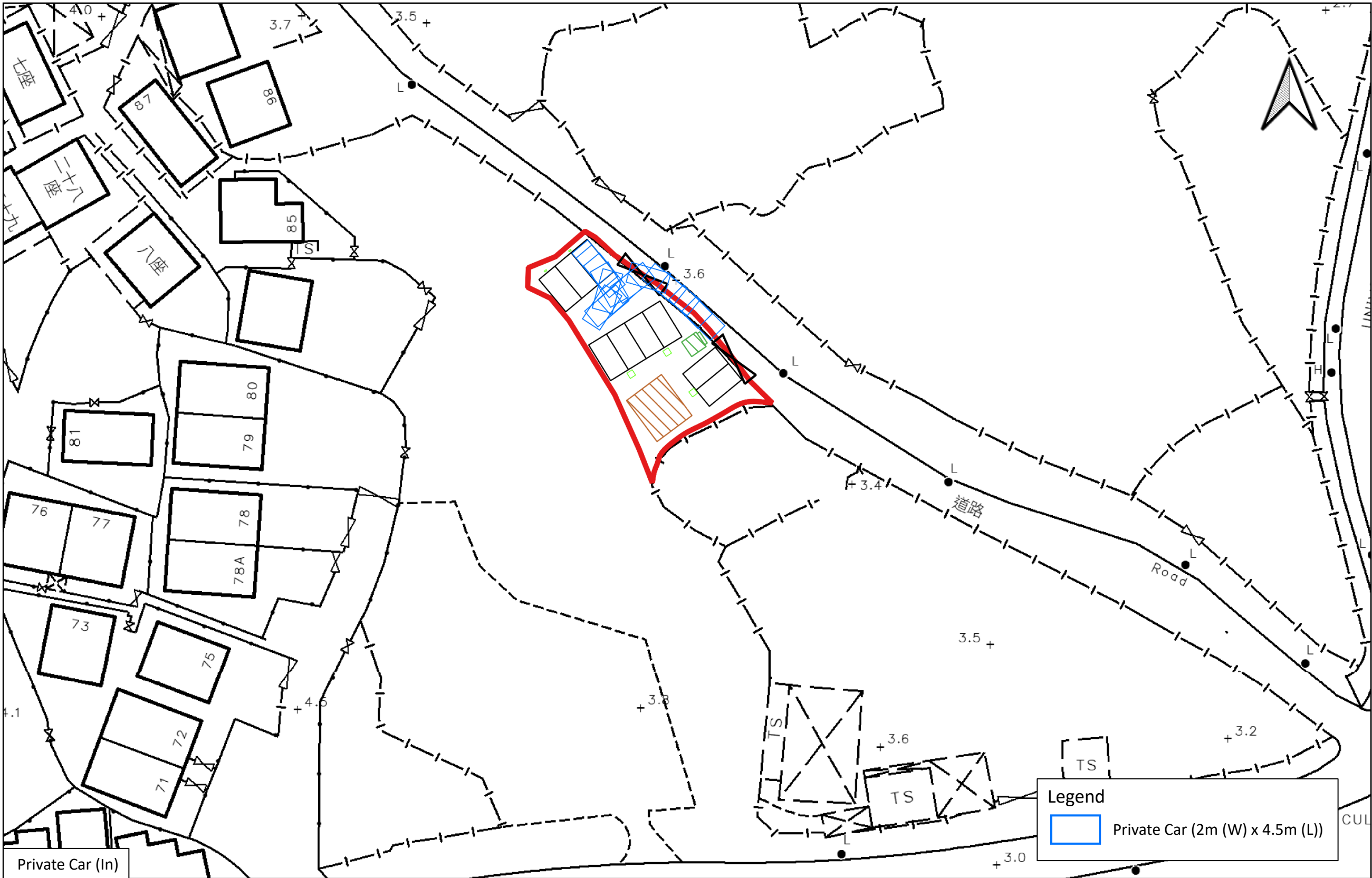


**LCH Planning and Development  
Consultants Limited**

Annex 4 : Swept Path Analysis

Section 16 Application for Temporary Public Vehicle Park (Private Cars Only) with Ancillary Electric Vehicle Charging Facilities and Ancillary Solar Panels and Associated Filling of Land for a Period of 3 Years at Lot No. 241 in D.D. 23 at Ting Kok, Tai Po, New Territories

(Source: HK GEODATA STORE, HKSAR Government)



Private Car (In)

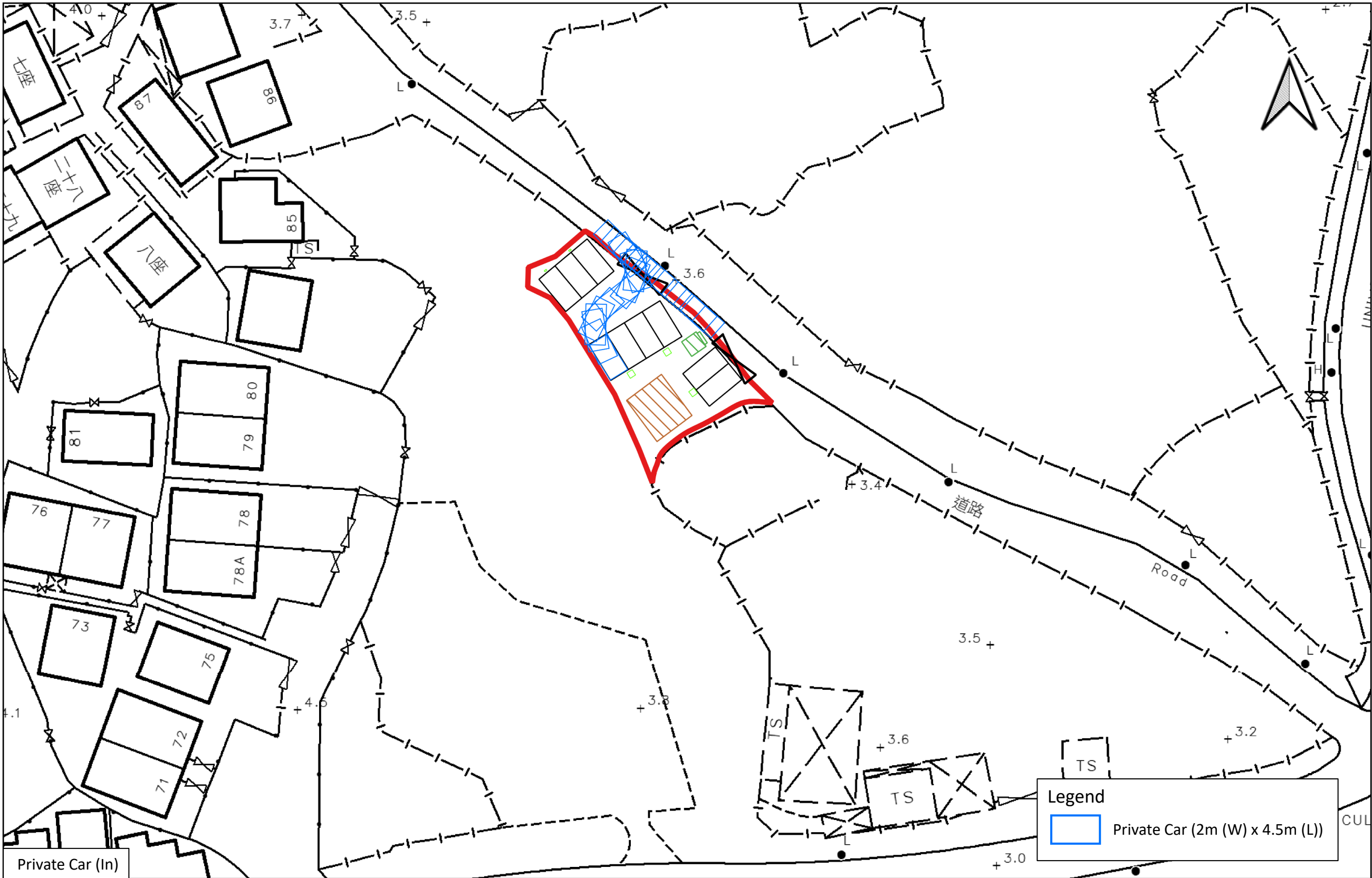


**LCH Planning and Development  
Consultants Limited**

Annex 4 : Swept Path Analysis

Section 16 Application for Temporary Public Vehicle Park (Private Cars Only) with Ancillary Electric Vehicle Charging Facilities and Ancillary Solar Panels and Associated Filling of Land for a Period of 3 Years at Lot No. 241 in D.D. 23 at Ting Kok, Tai Po, New Territories

(Source: HK GEODATA STORE, HKSAR Government)



Private Car (In)

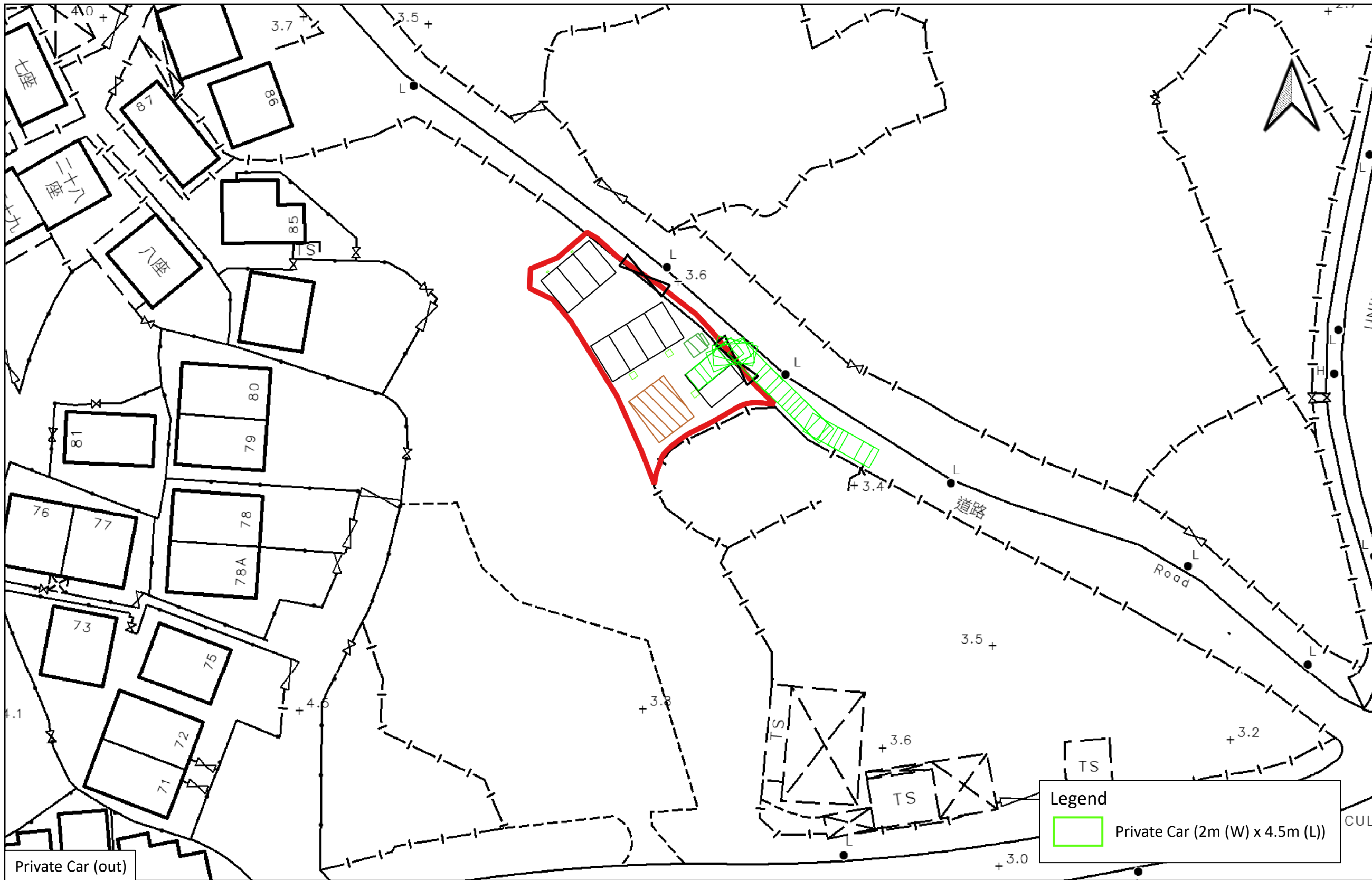


**LCH Planning and Development  
Consultants Limited**

Annex 4 : Swept Path Analysis

Section 16 Application for Temporary Public Vehicle Park (Private Cars Only) with Ancillary Electric Vehicle Charging Facilities and Ancillary Solar Panels and Associated Filling of Land for a Period of 3 Years at Lot No. 241 in D.D. 23 at Ting Kok, Tai Po, New Territories

(Source: HK GEODATA STORE, HKSAR Government)



Private Car (out)



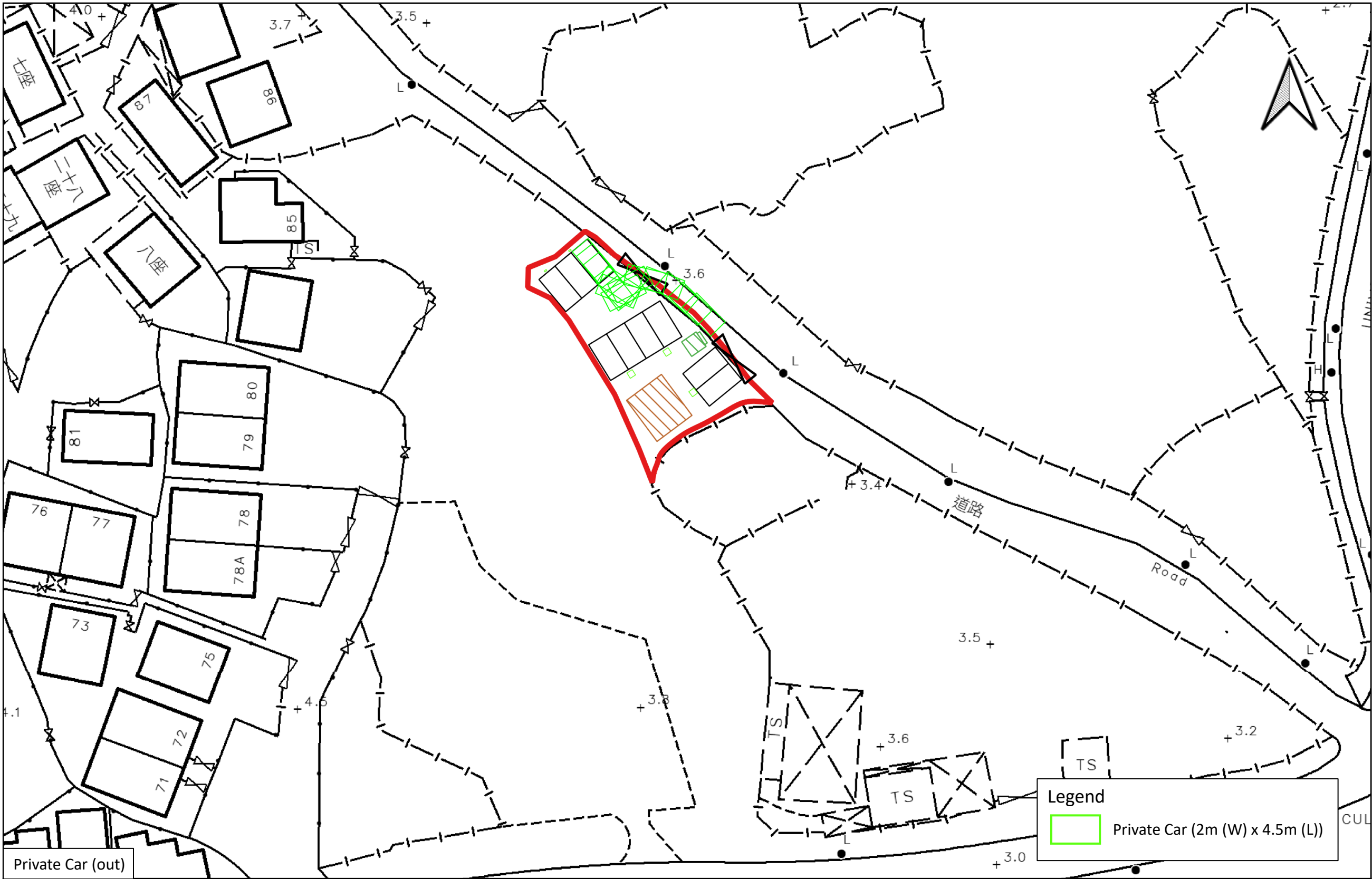
**LCH Planning and Development  
Consultants Limited**

Annex 4 : Swept Path Analysis

Section 16 Application for Temporary Public Vehicle Park (Private Cars Only) with Ancillary Electric Vehicle Charging Facilities and Ancillary Solar Panels and Associated Filling of Land for a Period of 3 Years at Lot No. 241 in D.D. 23 at Ting Kok, Tai Po, New Territories

(Source: HK GEODATA STORE, HKSAR Government)





Private Car (out)

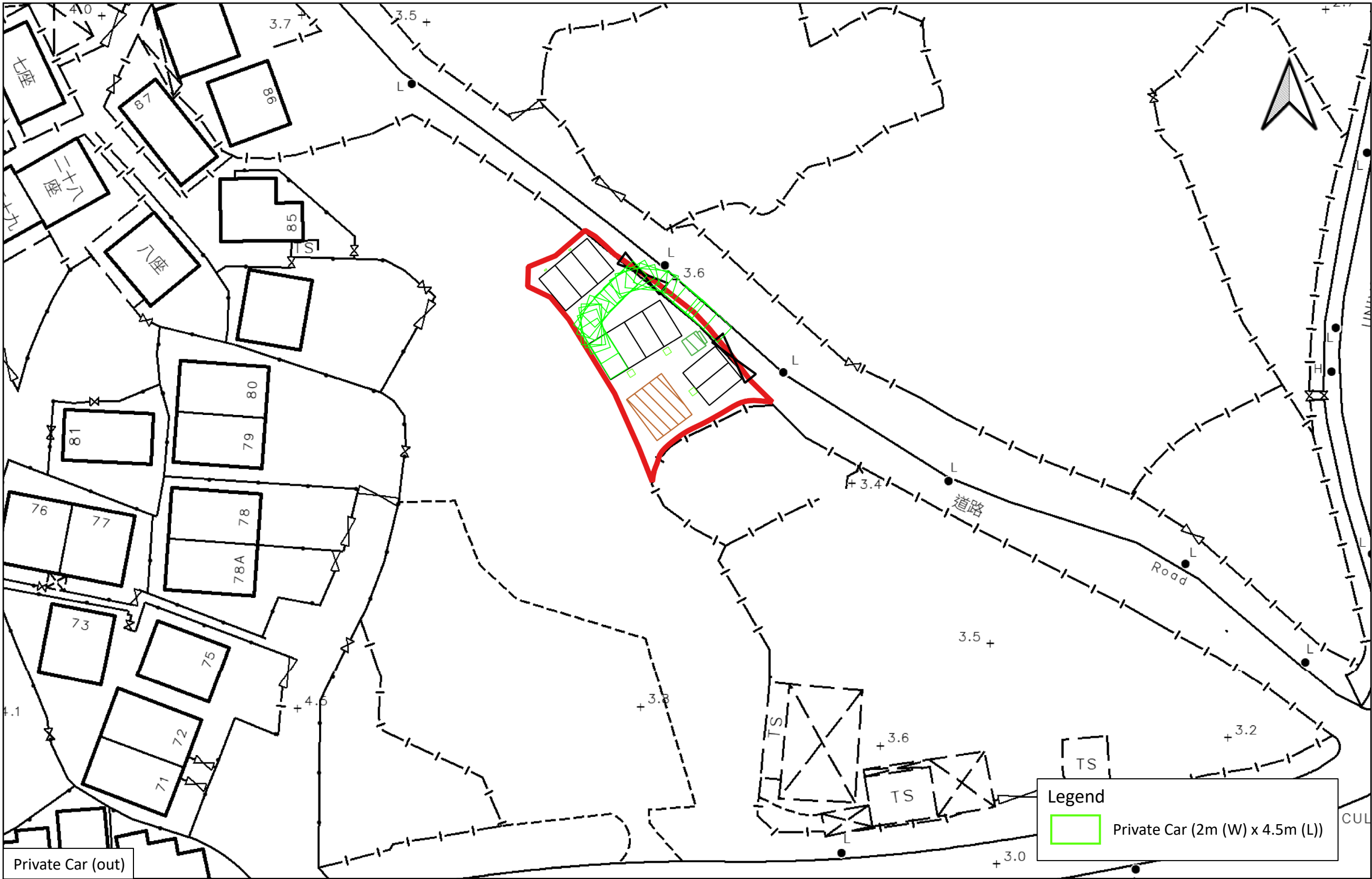


**LCH Planning and Development  
Consultants Limited**

Annex 4 : Swept Path Analysis

Section 16 Application for Temporary Public Vehicle Park (Private Cars Only) with Ancillary Electric Vehicle Charging Facilities and Ancillary Solar Panels and Associated Filling of Land for a Period of 3 Years at Lot No. 241 in D.D. 23 at Ting Kok, Tai Po, New Territories

*(Source: HK GEODATA STORE, HKSAR Government)*



Private Car (out)

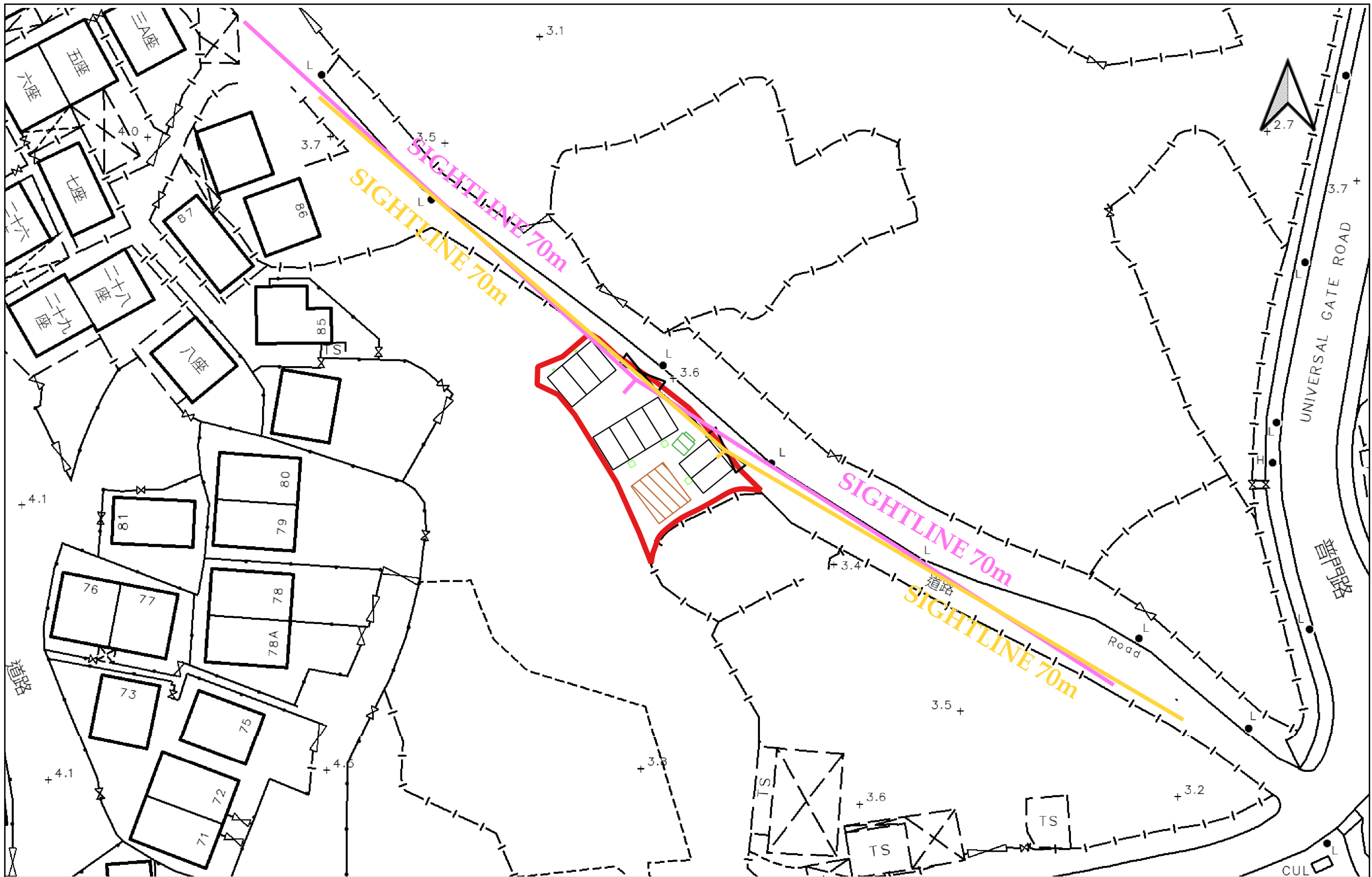


**LCH Planning and Development  
Consultants Limited**

Annex 4 : Swept Path Analysis

Section 16 Application for Temporary Public Vehicle Park (Private Cars Only) with Ancillary Electric Vehicle Charging Facilities and Ancillary Solar Panels and Associated Filling of Land for a Period of 3 Years at Lot No. 241 in D.D. 23 at Ting Kok, Tai Po, New Territories

(Source: HK GEODATA STORE, HKSAR Government)



**LCH Planning and Development  
Consultants Limited**

Annex 5 : Sightline Analysis

Section 16 Application for Temporary Public Vehicle Park (Private Cars Only) with Ancillary Electric Vehicle Charging Facilities and Ancillary Solar Panels and Associated Filling of Land for a Period of 3 Years at Lot No. 241 in D.D. 23 at Ting Kok, Tai Po, New Territories

(Source: HK GEODATA STORE, HKSAR Government)