



**LCH Planning and Development
Consultants Limited**

Our Ref.: PD2502002/10

Your Ref.: TPB/A/NE-TK/837

4 February 2026

By Email

Town Planning Board Secretariat
15/F, North Point Government Offices,
333 Java Road,
North Point,
Hong Kong

Dear Sir/Madam,

**APPLICATION NO. A/NE-TK/837 FOR PERMISSION
UNDER SECTION 16 OF THE TOWN PLANNING ORDINANCE**

We refer to the comments regarding the captioned application.

Please find attached our responses to departmental comments.

This Further Information contains the responses to comments of relevant Government departments and minor changes in the indicative layout plan without changing the major development parameters of the proposed development. Thus, according to TPB Planning Guideline No. 32B, this Further Information does not result in a material change of the nature of the application and should be accepted by the TPB for inclusion into the application

Should you require further information or have any query, please feel free to contact the undersigned or Cherie Lee at [REDACTED].

Yours faithfully,

For and on behalf of

LCH Planning & Development Consultants Limited

A handwritten signature in black ink, appearing to be 'JH' with a long horizontal stroke extending to the right.

Junior Ho *RPS RPP*
Director

Encl.

c.c. the Applicant

- Response to Comments Table
- Revised Annex 2 - Indicative Layout Plan
- Revised Annex 4 - Swept Path Analysis
- Revised Annex 5 - Sightline Analysis

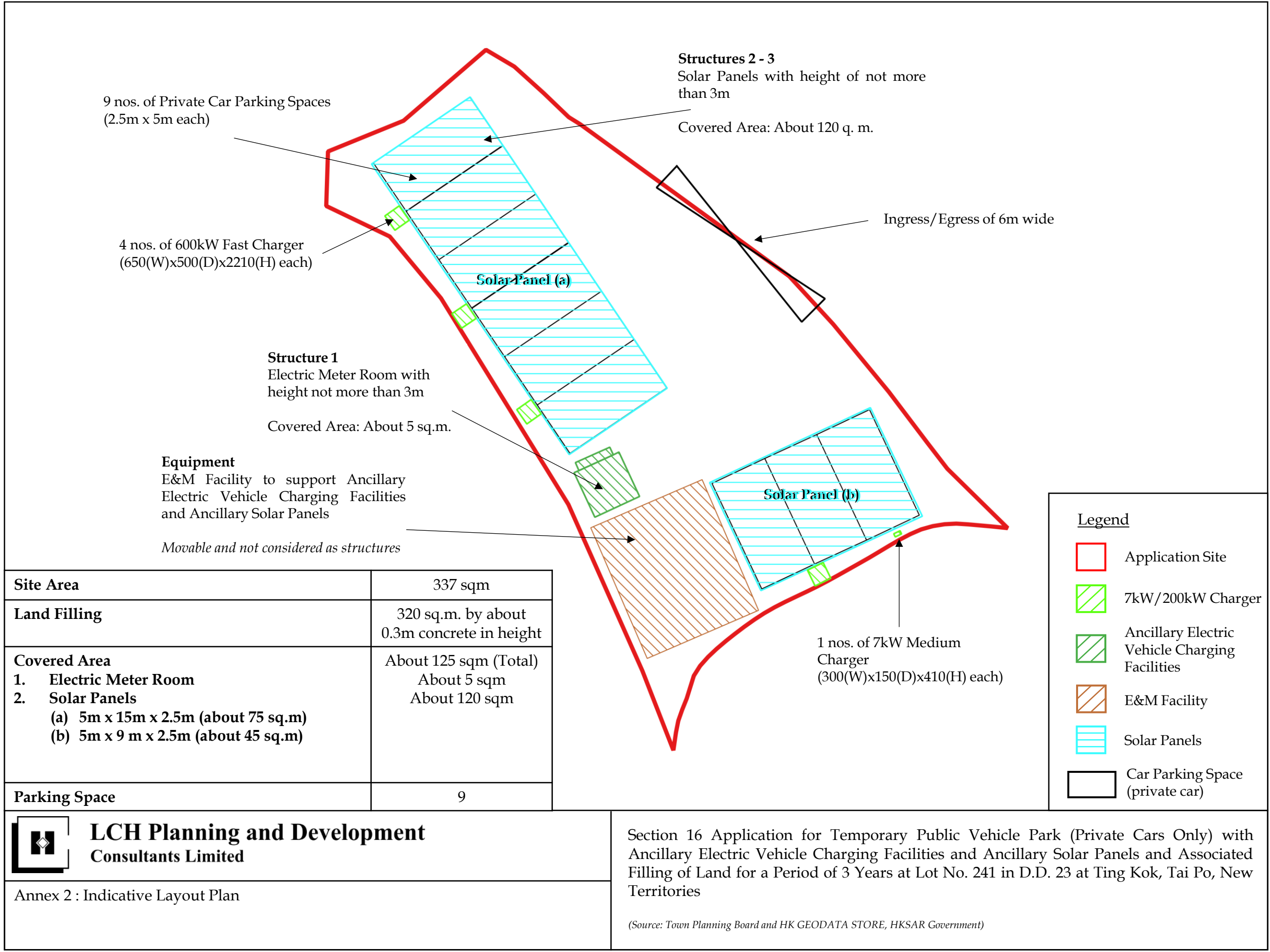




Section 16 Application No. A/NE-TK/837

Annex 1 - Response to Comments Table

No.	Comments Received	Our Responses
1.	<i>Comments from Transport Department received on 3 February 2025</i>	
a	<p>The sightline shall be a straight line covering the access road.</p> <p>The sightline is obstructed by the proposed parking space and other object within the site. Please review.</p> <p>[See attachment "A_NE-TK_837_FI5 (Mark up comment).pdf"]</p>	<p>Noted with thanks.</p> <p>The sightline analysis is revised accordingly for review in Annex 5.</p> <p>Due to site constraints (i.e. the parking layout being restricted by the lot boundary), it is acknowledged that the swept path analysis (See Annex 4) shows vehicles may need to temporarily encroach onto the opposite footpath when entering or exiting the proposed development. This could potentially create conflicts with footpath users. To address these concerns, the Applicant is willing to implement any possible measures to minimize such conflicts. Possible measures include installing warning signage to alert drivers and pedestrians, or a staff could be deployed to manage vehicle movements in and out of the car park.</p> <p>The indicative layout plan has also revised in Annex 2.</p>



Site Area	337 sqm
Land Filling	320 sq.m. by about 0.3m concrete in height
Covered Area	About 125 sqm (Total)
1. Electric Meter Room	About 5 sqm
2. Solar Panels	About 120 sqm
(a) 5m x 15m x 2.5m (about 75 sq.m)	
(b) 5m x 9 m x 2.5m (about 45 sq.m)	
Parking Space	9

Legend

Application Site

7kW/200kW Charger

Ancillary Electric Vehicle Charging Facilities

E&M Facility

Solar Panels

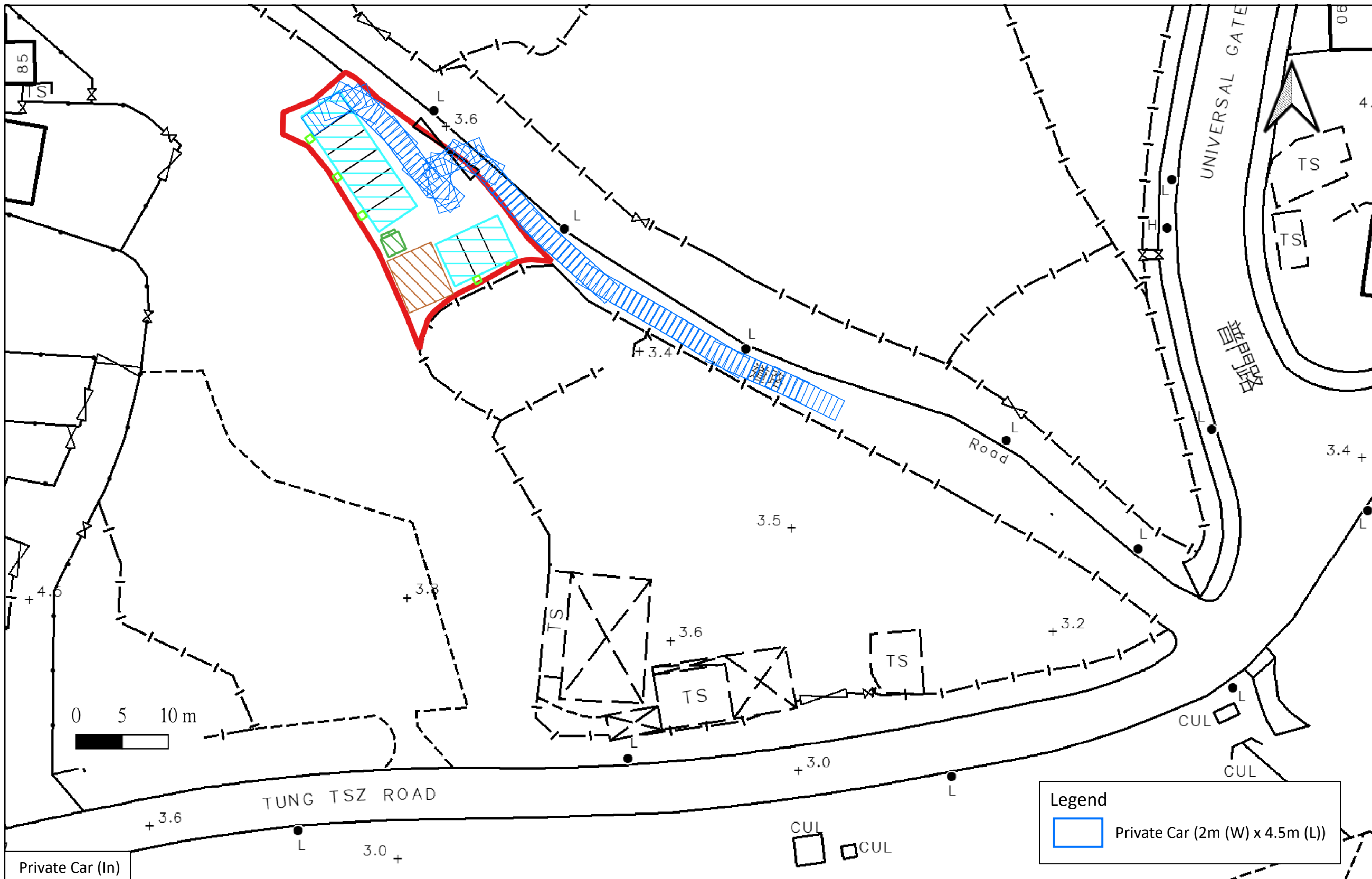
Car Parking Space (private car)

LCH Planning and Development Consultants Limited

Annex 2 : Indicative Layout Plan

Section 16 Application for Temporary Public Vehicle Park (Private Cars Only) with Ancillary Electric Vehicle Charging Facilities and Ancillary Solar Panels and Associated Filling of Land for a Period of 3 Years at Lot No. 241 in D.D. 23 at Ting Kok, Tai Po, New Territories

(Source: Town Planning Board and HK GEODATA STORE, HKSAR Government)



Private Car (In)



**LCH Planning and Development
Consultants Limited**

Annex 4 : Swept Path Analysis

Section 16 Application for Temporary Public Vehicle Park (Private Cars Only) with Ancillary Electric Vehicle Charging Facilities and Ancillary Solar Panels and Associated Filling of Land for a Period of 3 Years at Lot No. 241 in D.D. 23 at Ting Kok, Tai Po, New Territories

(Source: HK GEODATA STORE, HKSAR Government)

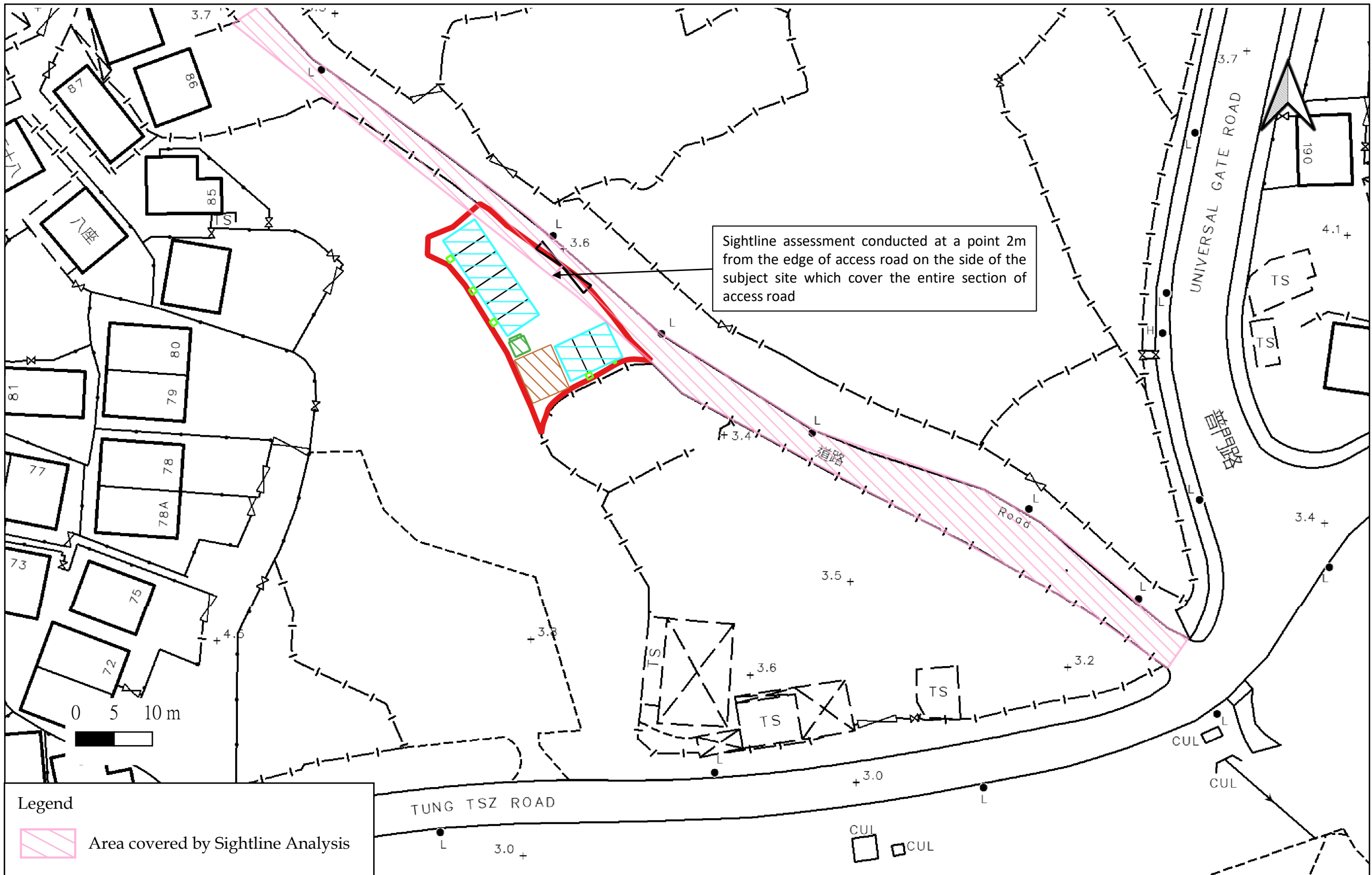


**LCH Planning and Development
Consultants Limited**

Annex 4 : Swept Path Analysis

Section 16 Application for Temporary Public Vehicle Park (Private Cars Only) with Ancillary Electric Vehicle Charging Facilities and Ancillary Solar Panels and Associated Filling of Land for a Period of 3 Years at Lot No. 241 in D.D. 23 at Ting Kok, Tai Po, New Territories

(Source: HK GEODATA STORE, HKSAR Government)



Legend

 Area covered by Sightline Analysis

 **LCH Planning and Development Consultants Limited**

Annex 5 : Sightline Analysis

Section 16 Application for Temporary Public Vehicle Park (Private Cars Only) with Ancillary Electric Vehicle Charging Facilities and Ancillary Solar Panels and Associated Filling of Land for a Period of 3 Years at Lot No. 241 in D.D. 23 at Ting Kok, Tai Po, New Territories

(Source: HK GEODATA STORE, HKSAR Government)