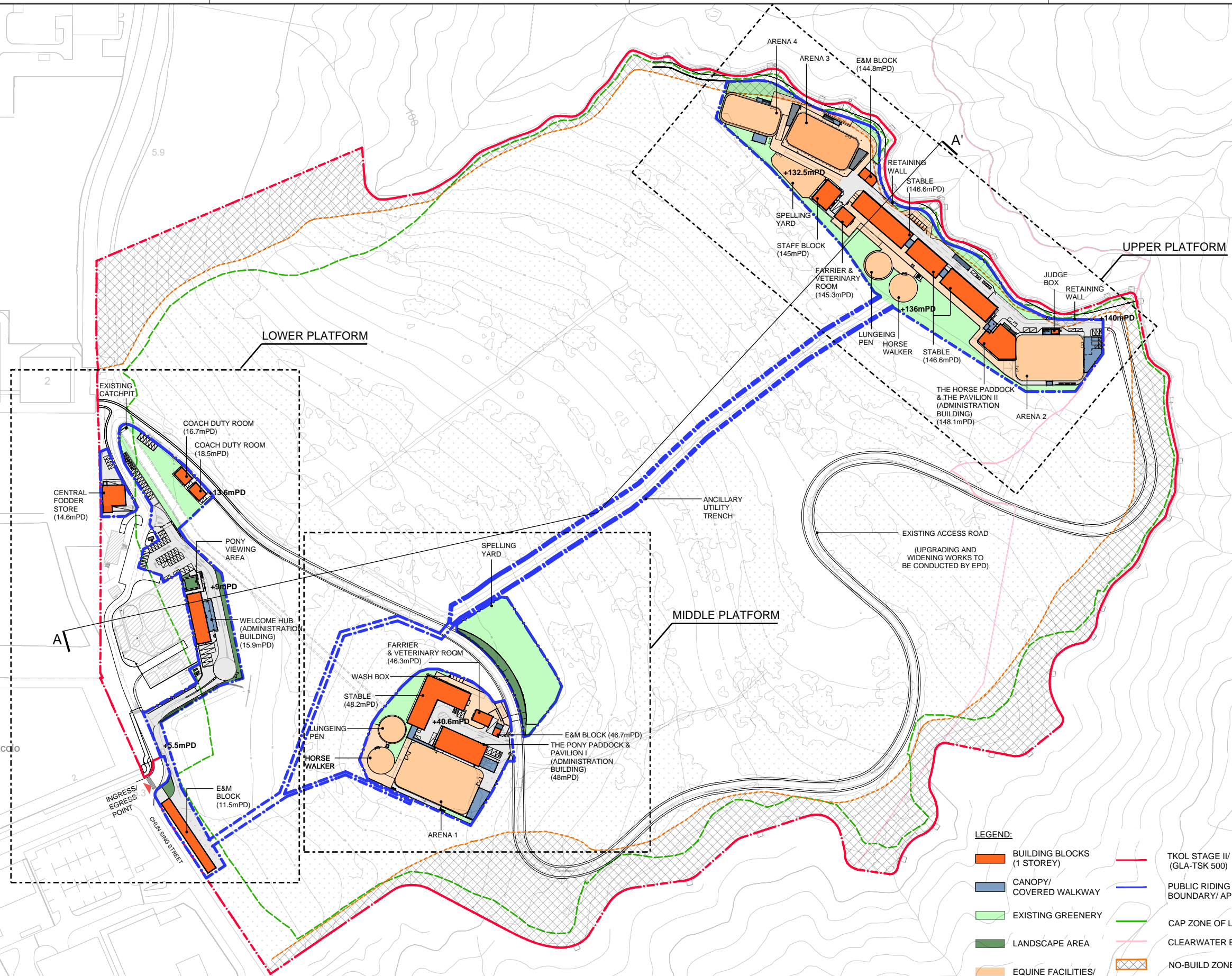


# *Appendix 1*

---

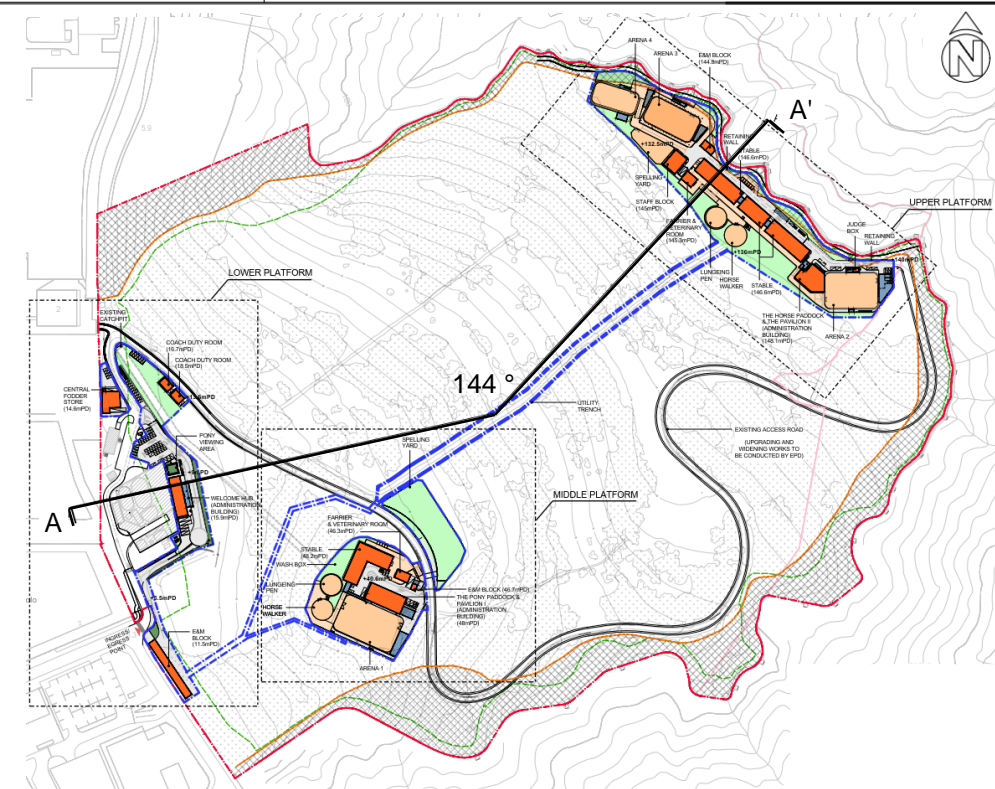
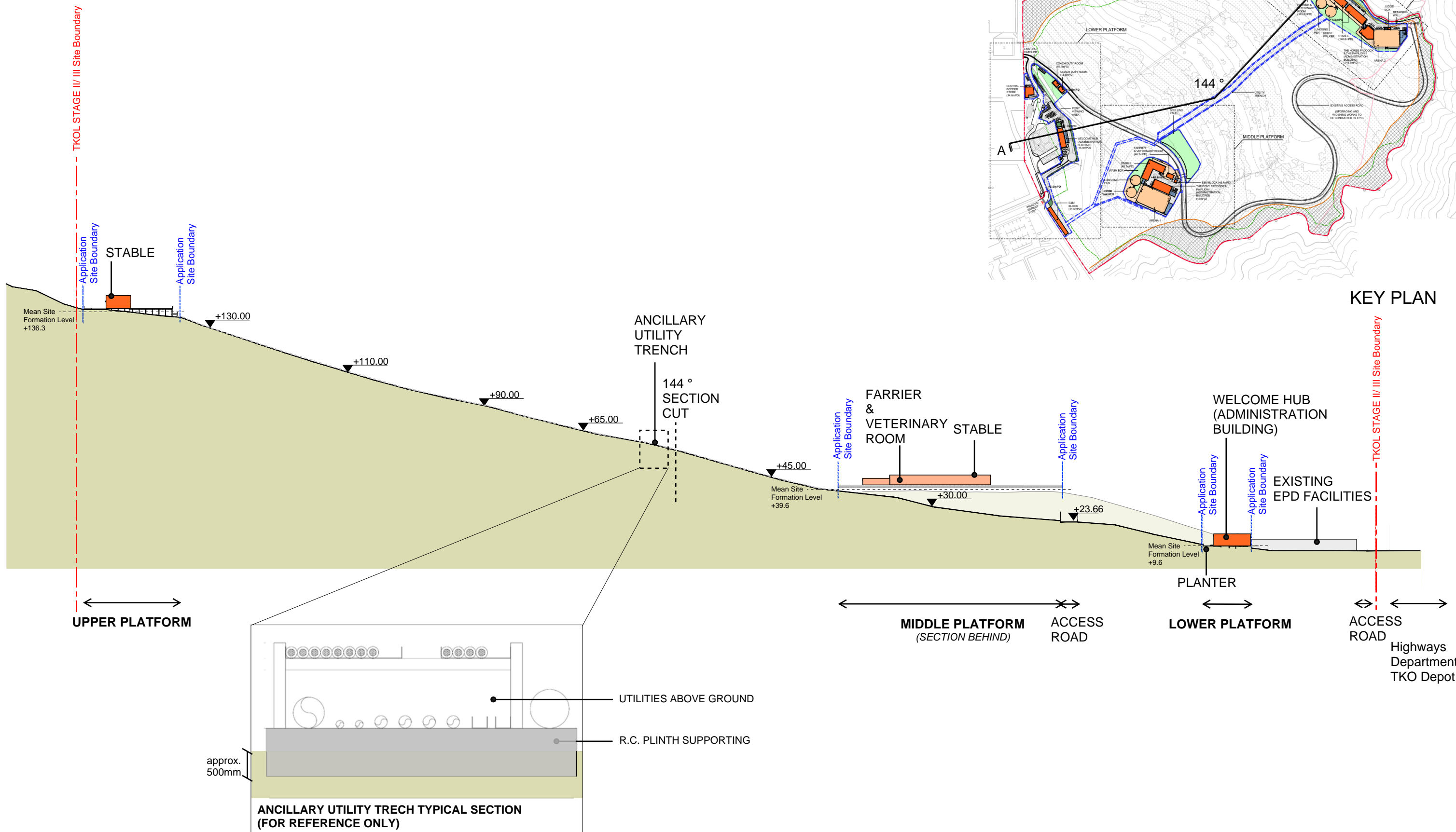
CONCEPTUAL ARCHITECTURAL DRAWINGS  
AND INDICATIVE ARTIST'S IMPRESSION



Title

# Indicative Master Layout Plan

Checked	SKW	Drawn	RYT
Rev	0	Date	FEB 2026
Scale	Figure		
1 : 3000	Appendix 1 (Fig. 1.1)		

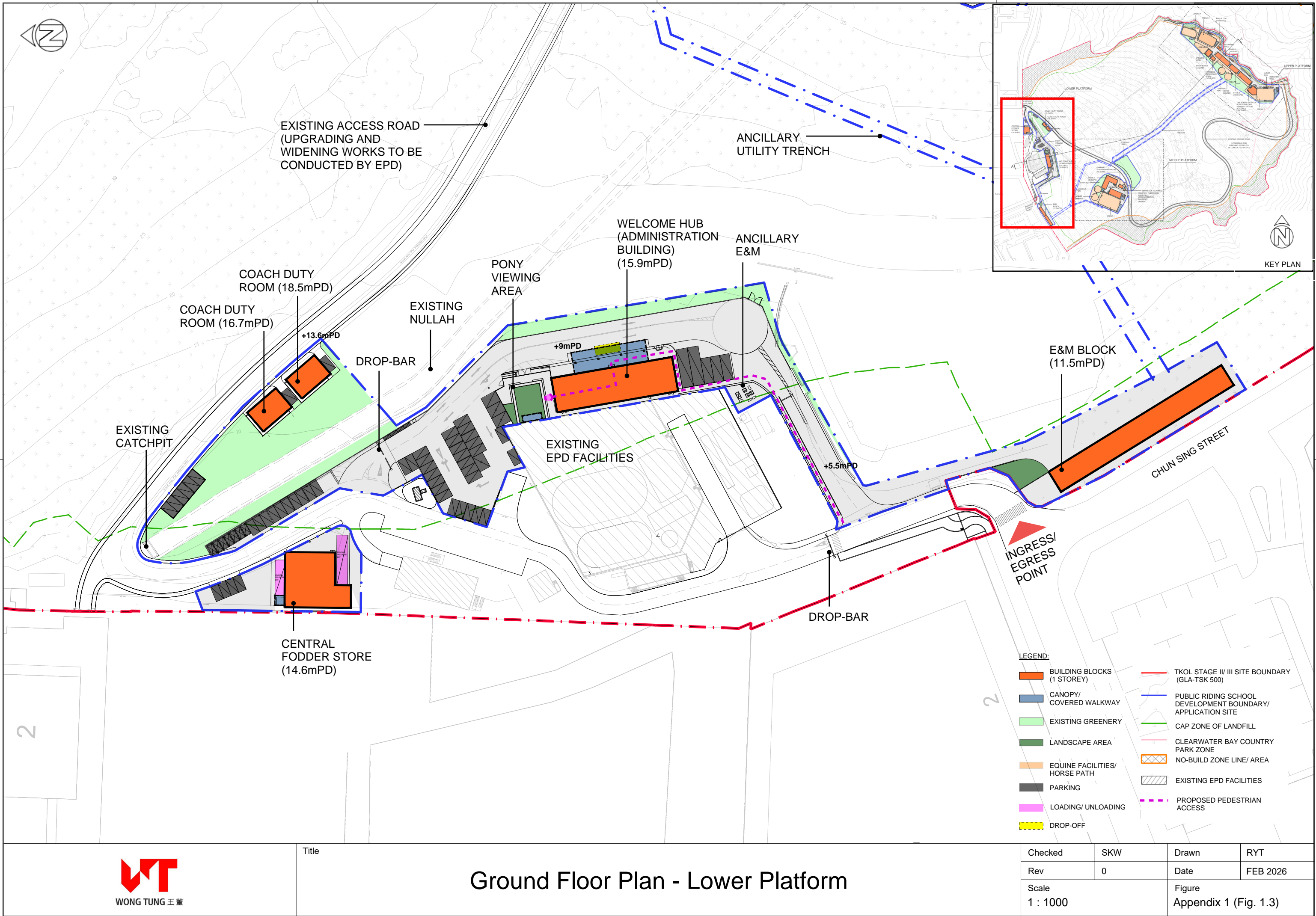


Title

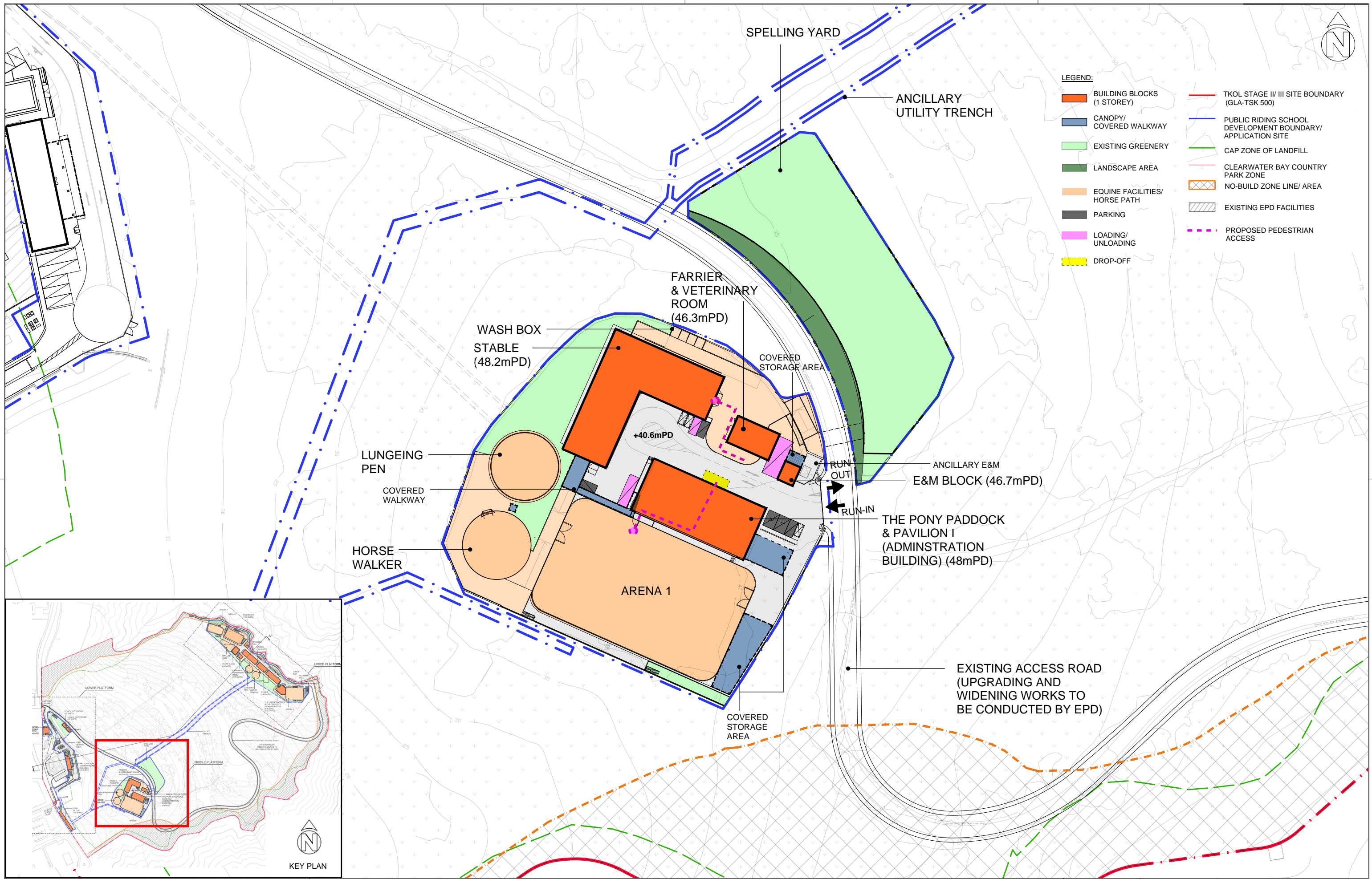
Site Section A' - A

Checked	SKW	Drawn	RYT
Rev	0	Date	FEB 2026
Scale	Figure		
1 : 2000	Appendix 1 (Fig. 1.2)		

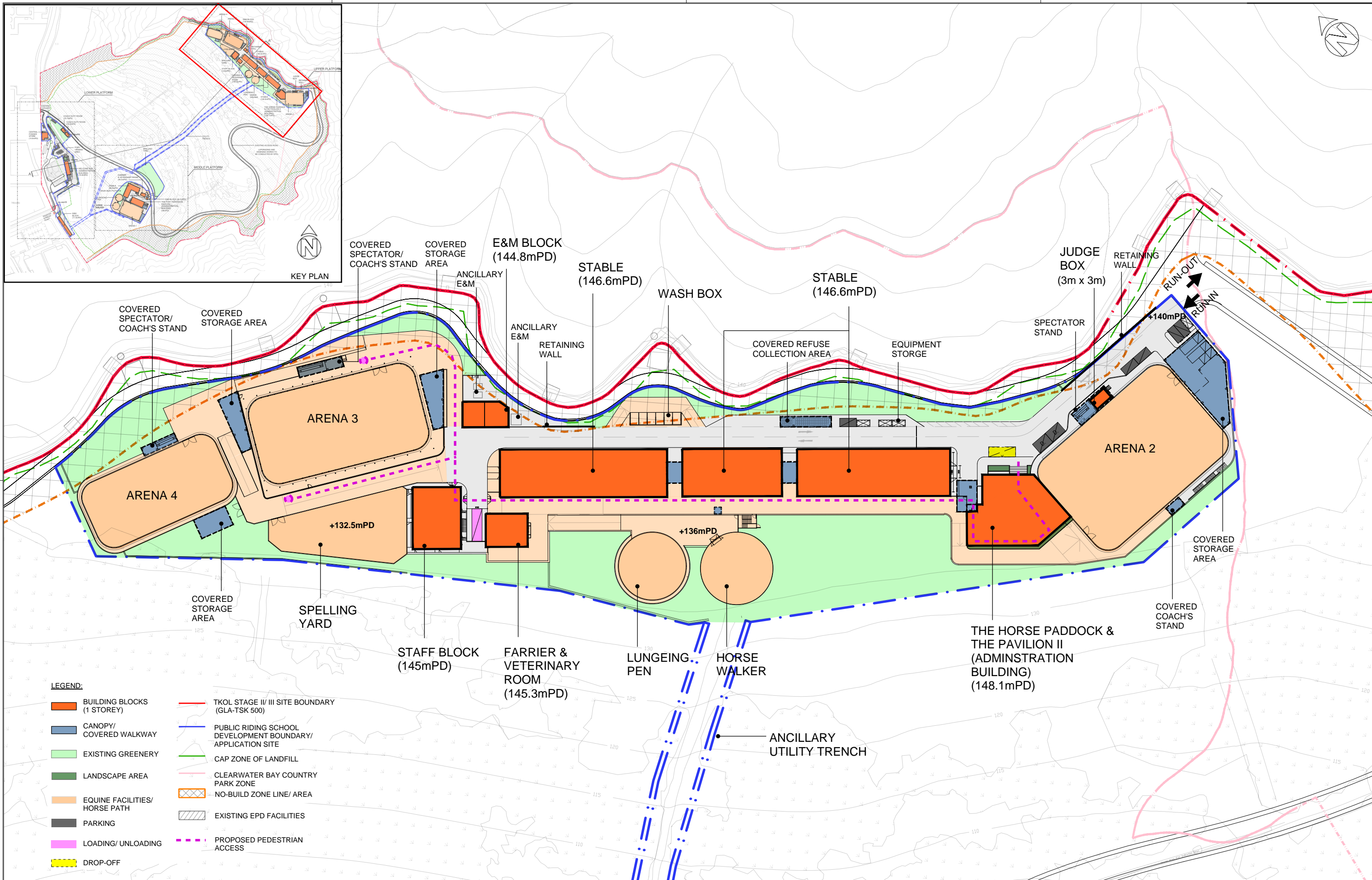










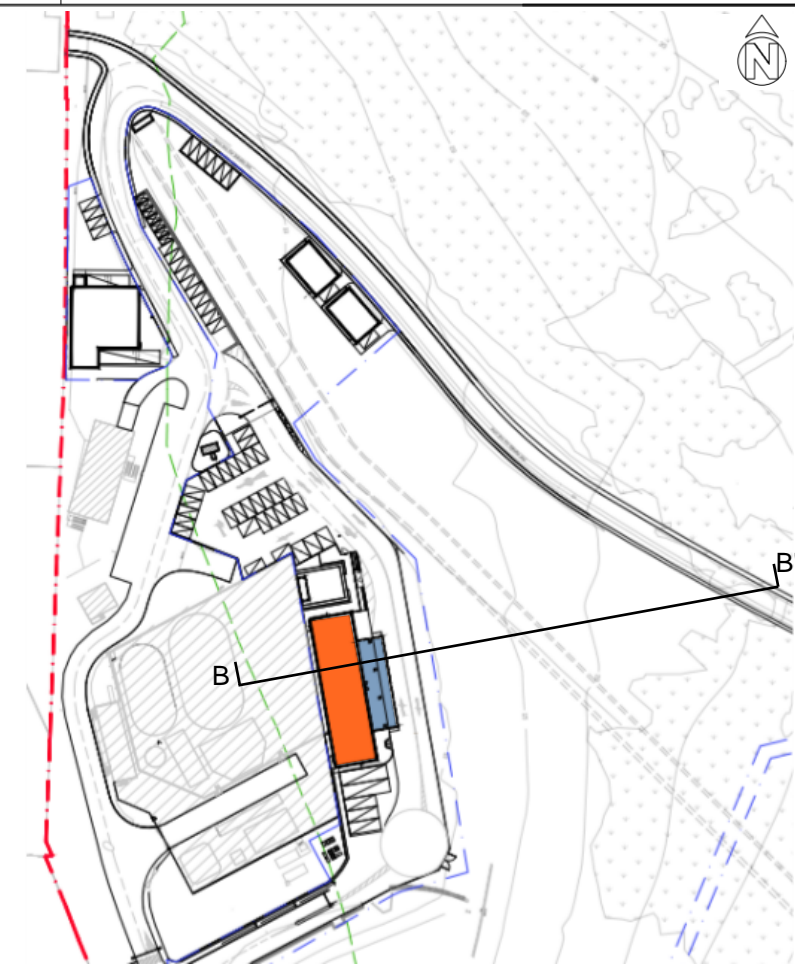


Title

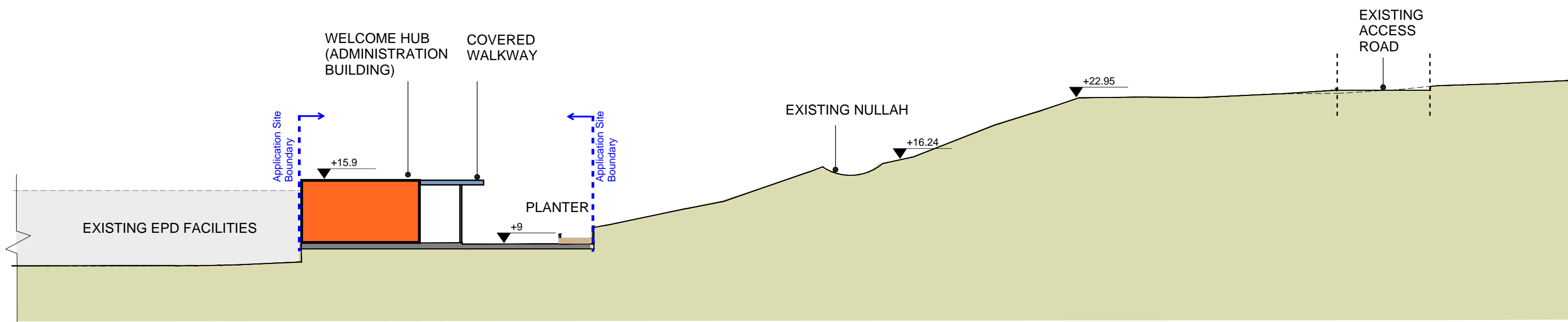
Ground Floor Plan - Upper Platform

Checked	SKW	Drawn	RYT
Rev	0	Date	FEB 2026
Scale	Figure		
1 : 1000	Appendix 1 (Fig. 1.5)		





KEY PLAN



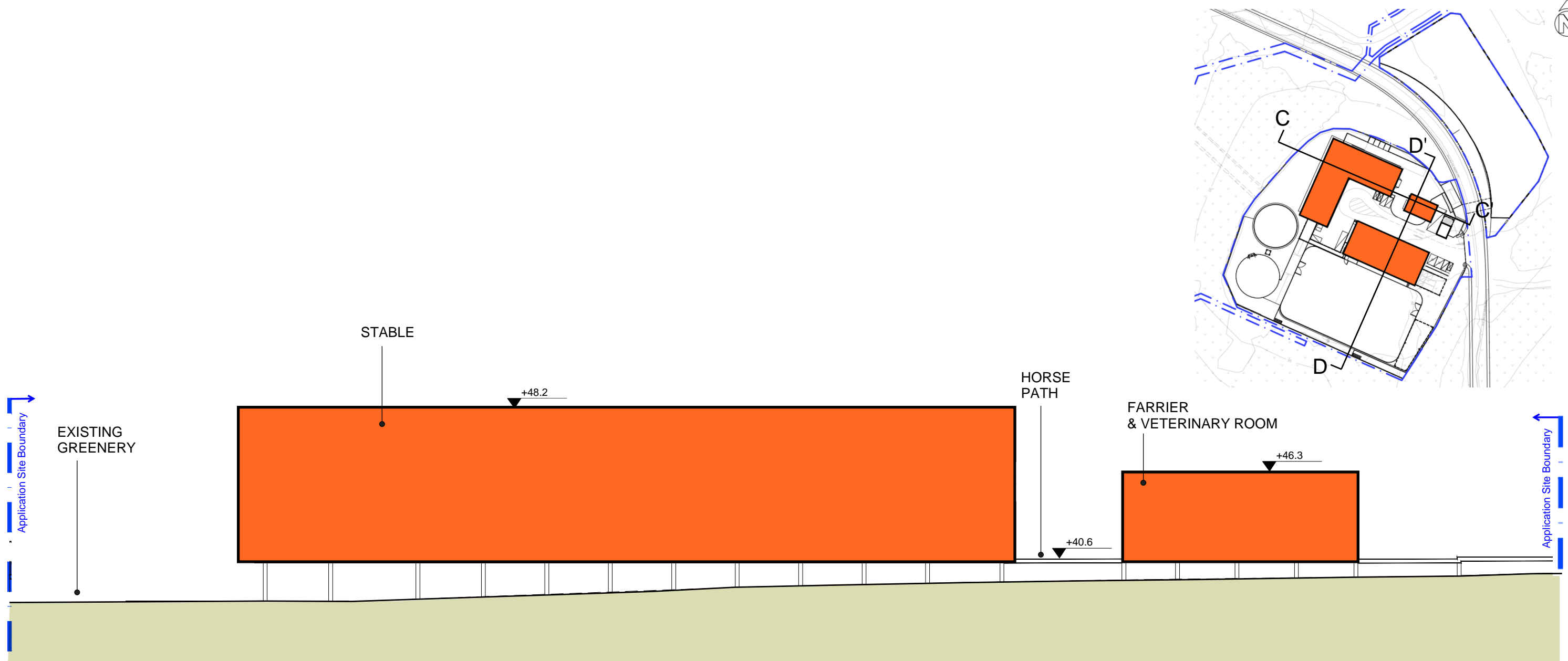
Section B - B'



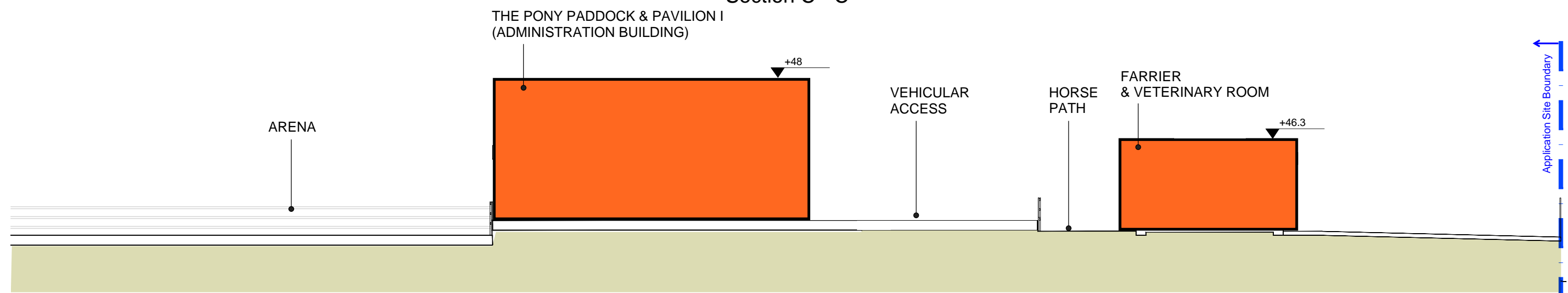
Title

# Indicative Lower Platform Section

Checked	SKW	Drawn	RYT
Rev	0	Date	FEB 2026
Scale 1 : 400		Figure Appendix 1 (Fig. 1.6)	



Section C - C'



Section D - D'

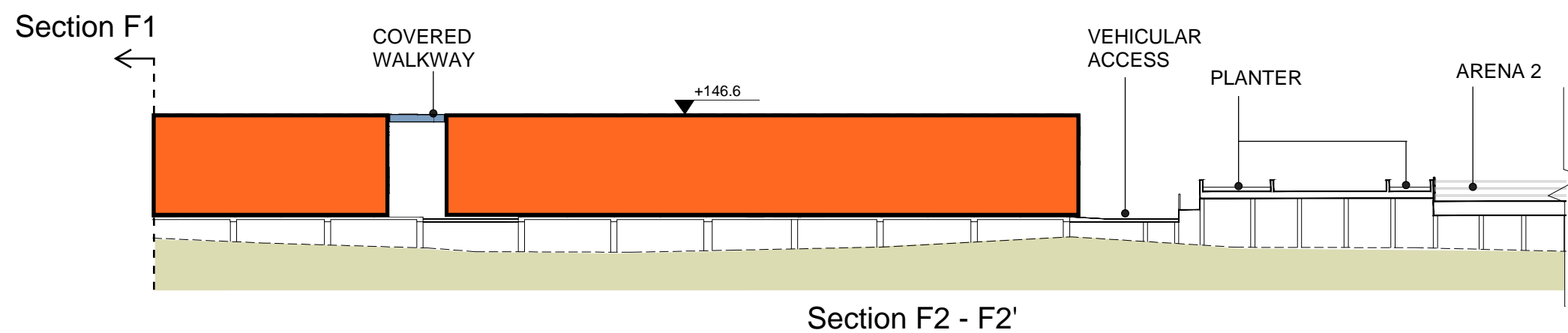
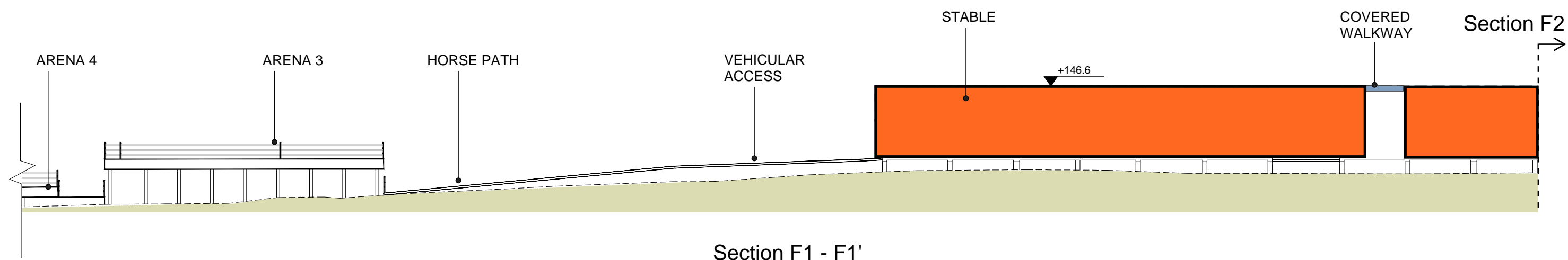
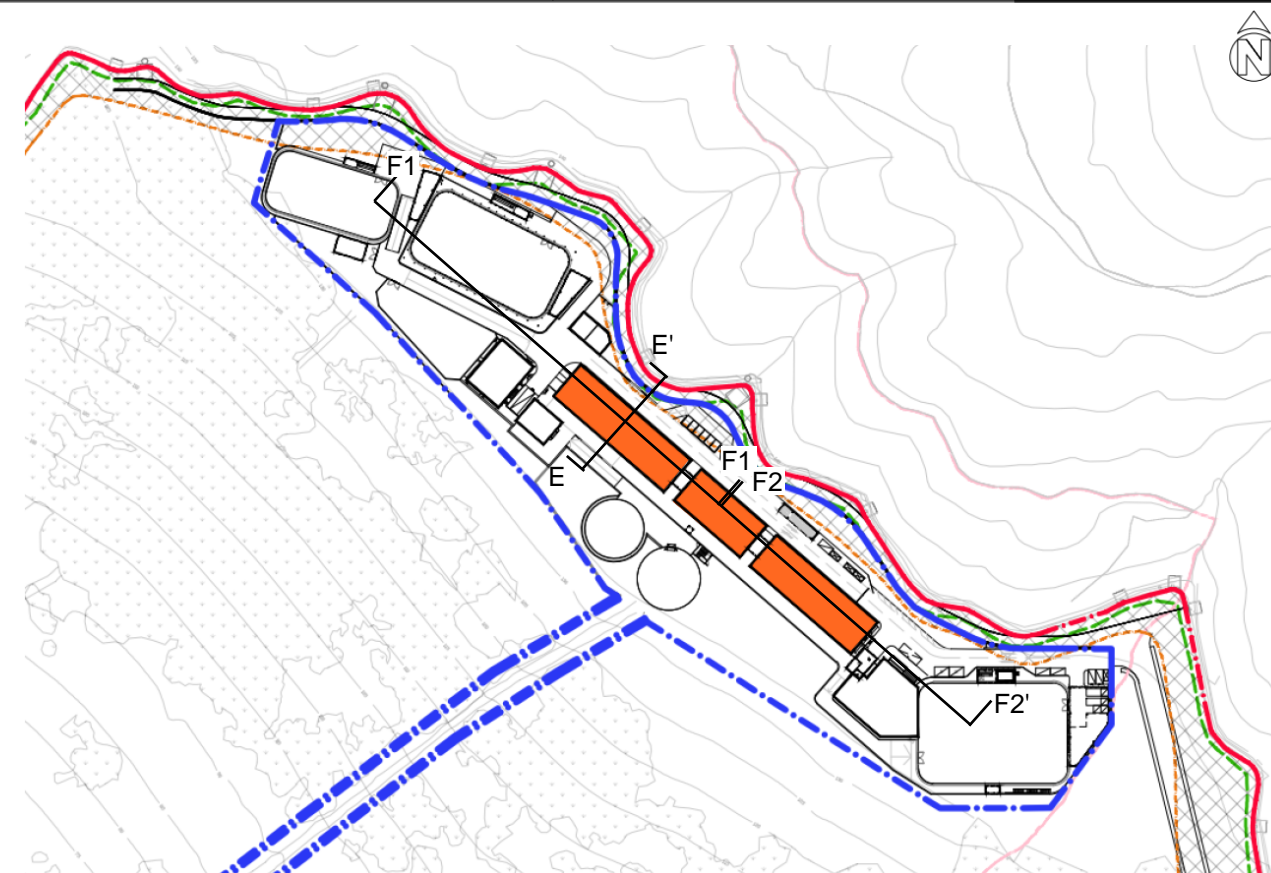
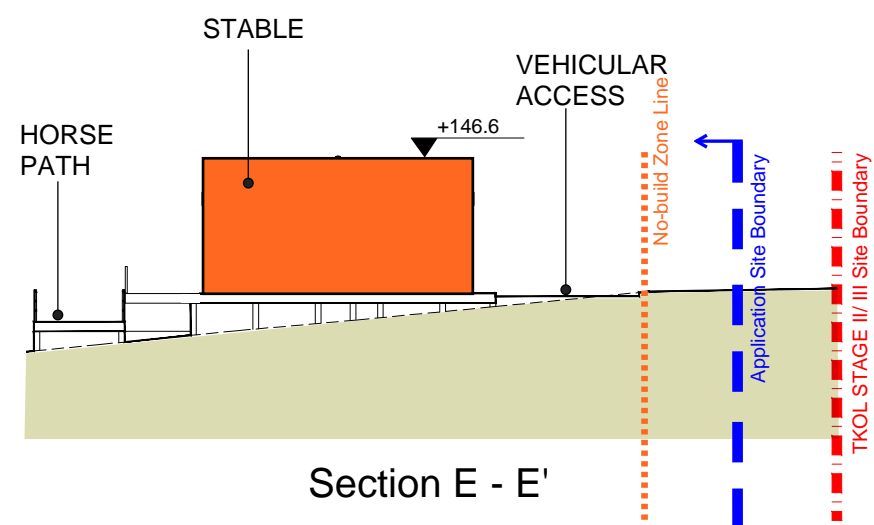


Title

# Indicative Middle Platform Section

Checked	SKW	Drawn	RYT
Rev	0	Date	FEB 2026
Scale 1 : 200		Figure Appendix 1 (Fig. 1.7)	





Title

# Indicative Upper Platform Section

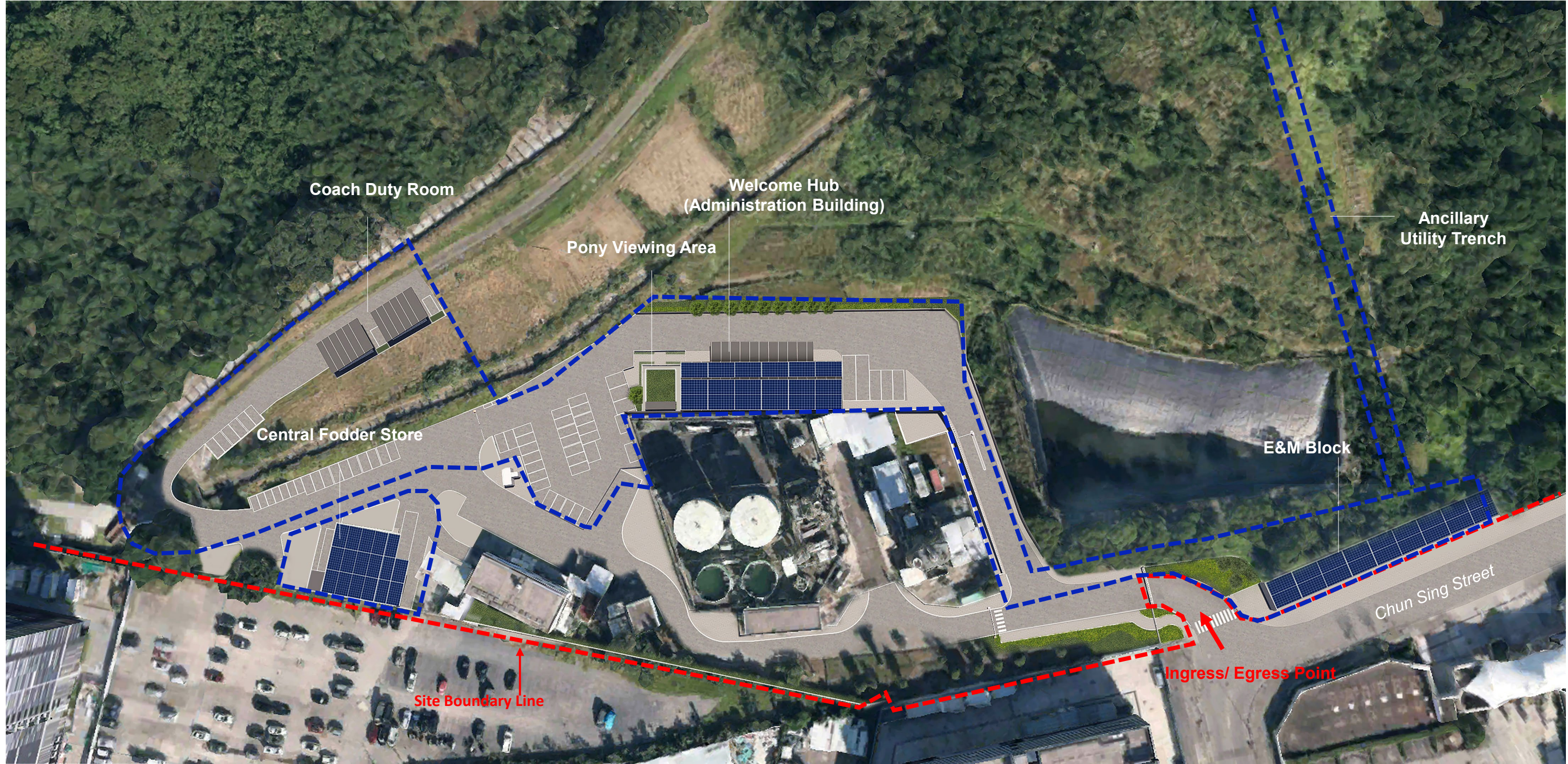
Checked	SKW	Drawn	RYT
Rev	0	Date	FEB 2026
Scale	Figure		
1 : 400	Appendix 1 (Fig. 1.8)		



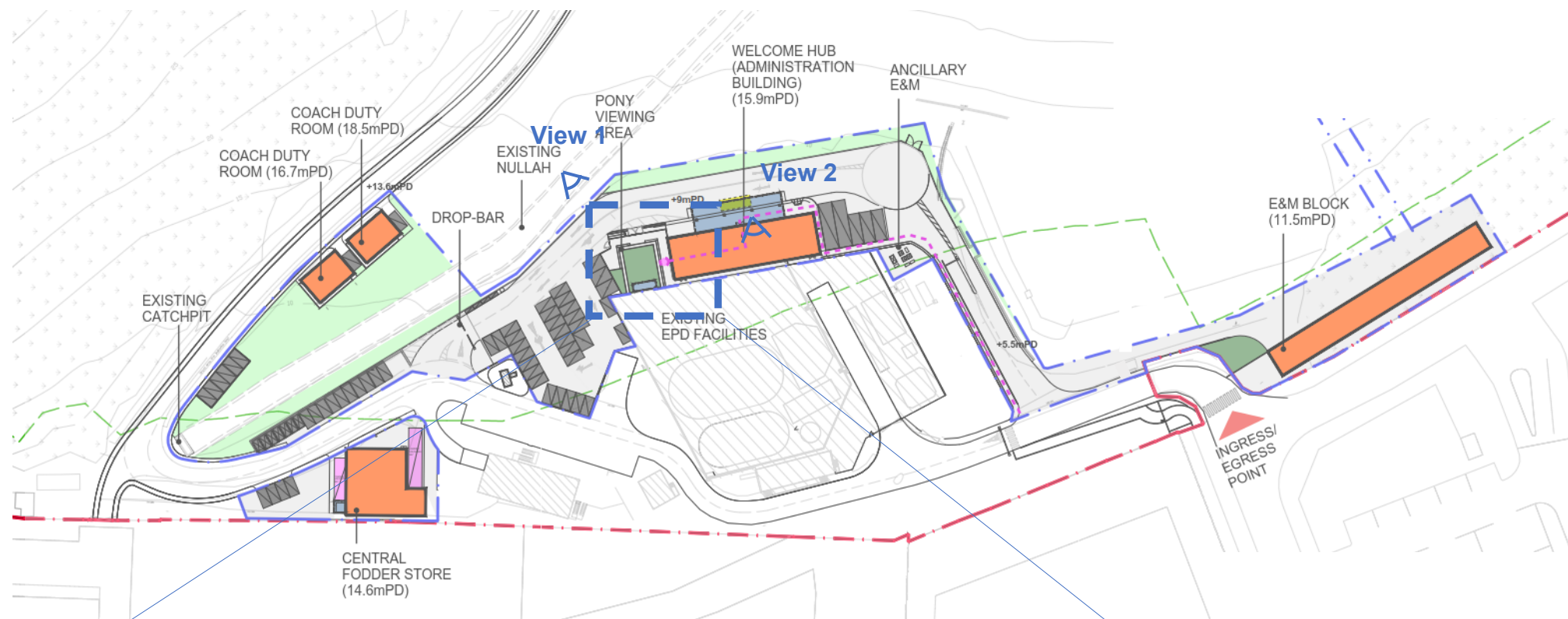


Title	Supplementary Drawings - Artist's Impression (for reference only) The Proposed Riding School			Checked	SKW	Drawn	RYT
				Rev	0	Date	FEB 2026
				Scale N/A	Figure Appendix 1 (Fig. 2.1)		







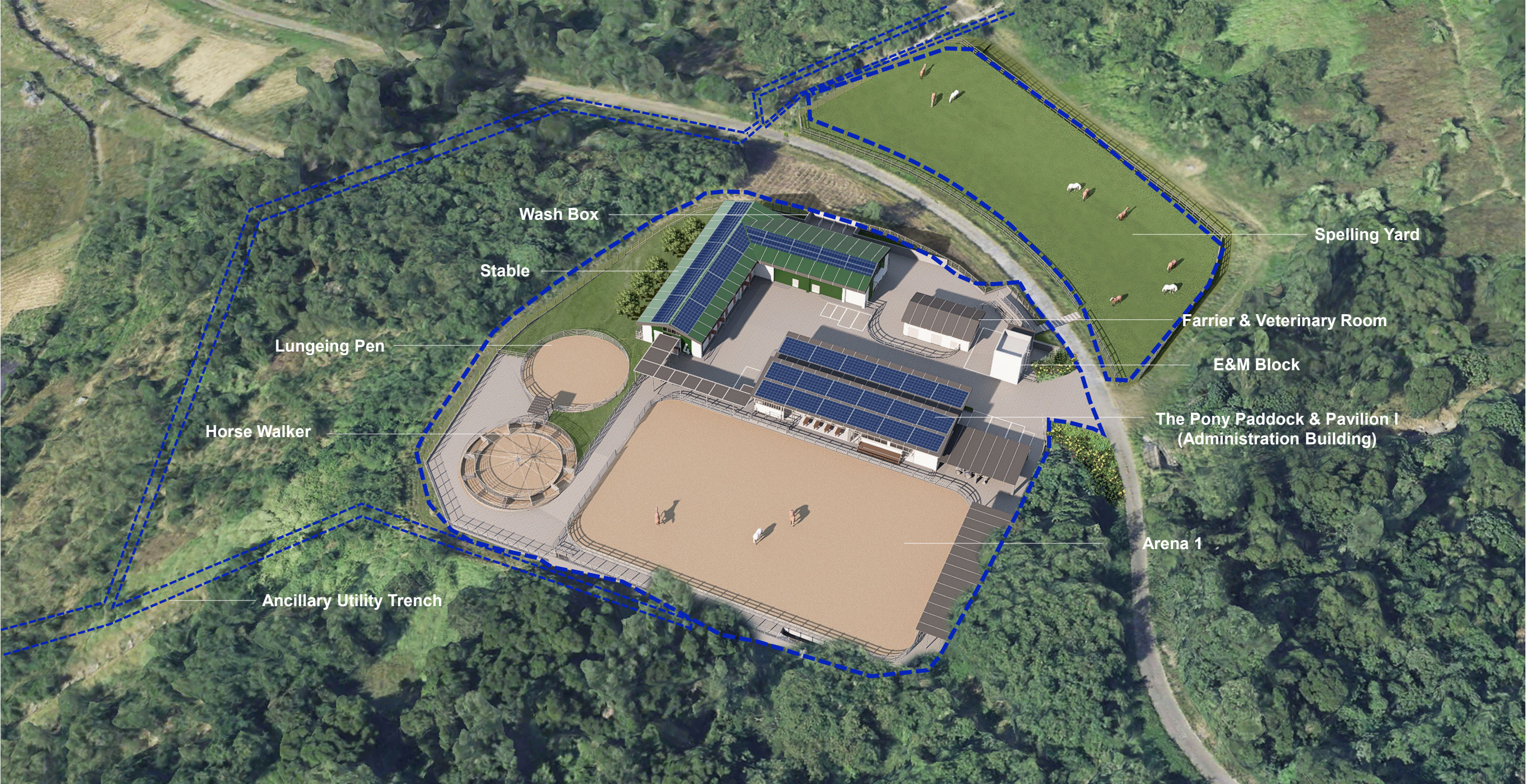


View 1: Pony Viewing Area



View 2: Welcome Hub









View 4: The Pony Paddock & Pavilion I



View 3: The Pony Paddock & Pavilion I



View 5: Covered Walkway



Title

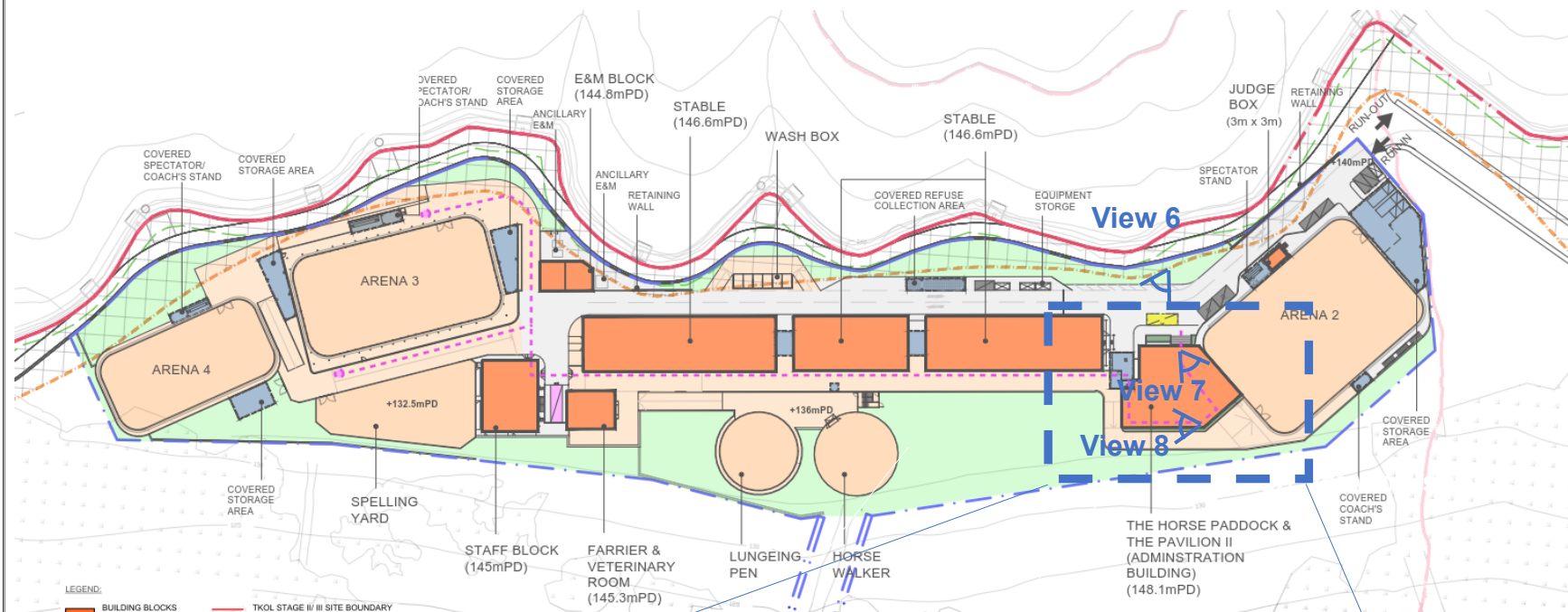
Supplementary Drawings - Artist's Impression (for reference only)  
Middle Platform

Checked	SKW	Drawn	RYT
Rev	0	Date	FEB 2026
Scale	N/A	Figure	Appendix 1 (Fig. 2.5)









View 6: The Horse Paddock & The Pavilion II



View: 7 The Horse Paddock & The Pavilion II



View 8: The Horse Paddock & The Pavilion II