

Appendix 7

EXTRACT OF APPROVED ENVIRONMENTAL
ASSESSMENT REPORT

Figure 2-1 Setback Distance from Dai Wah Street to the Fresh Air In-take Façade of Sensitive Use Room

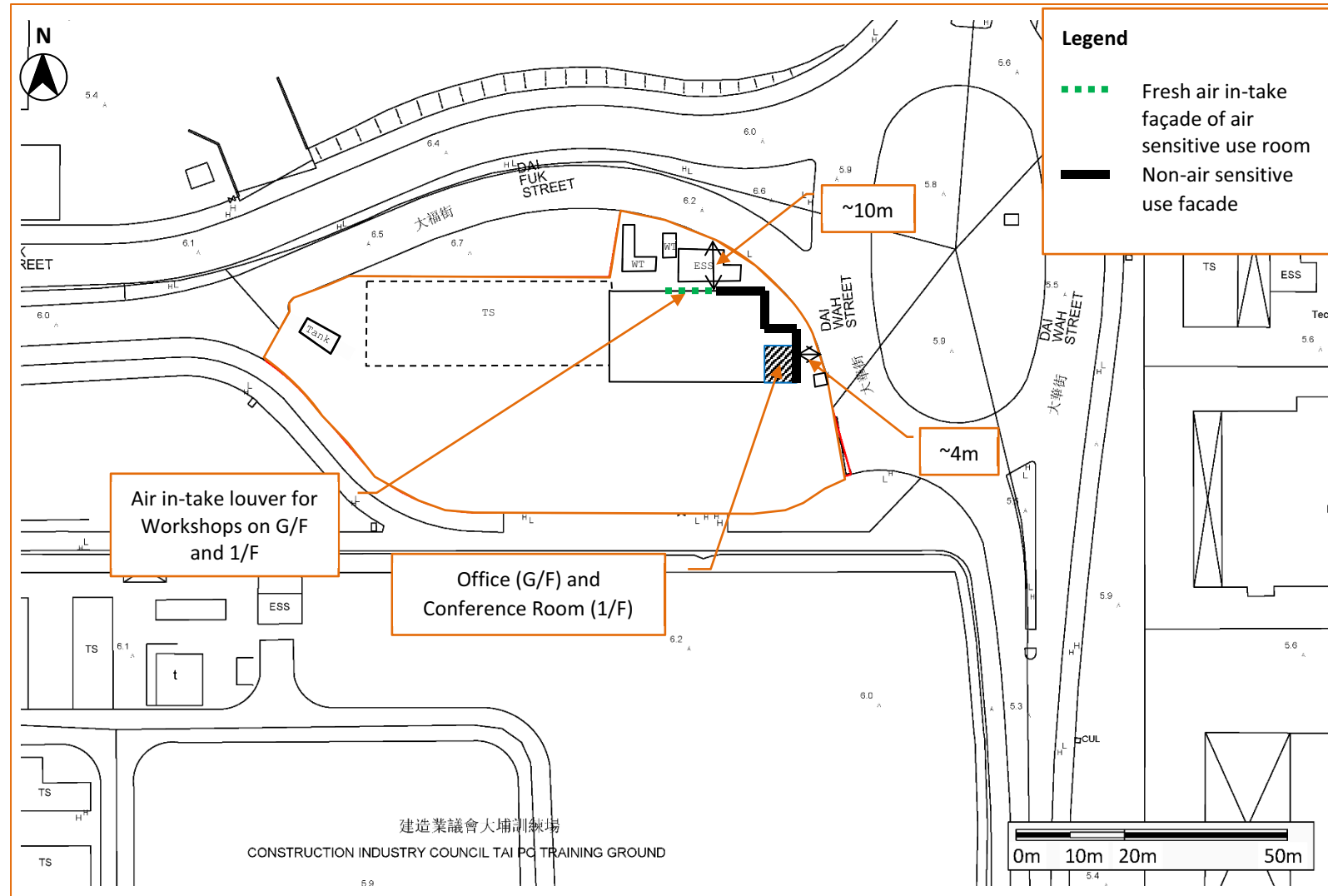


Figure 3-1 Locations of Representative Noise Sensitive Receivers

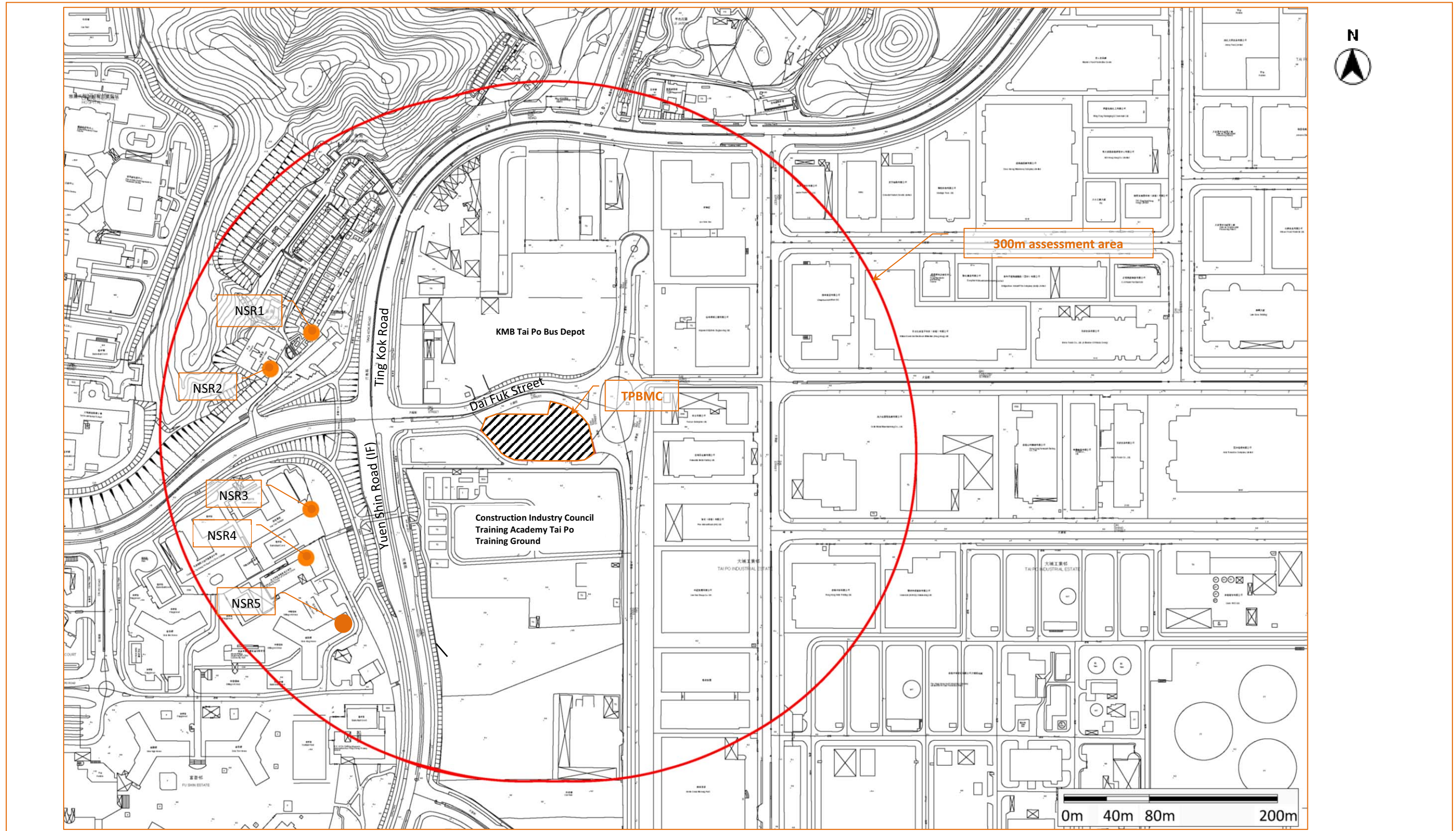


Figure 3-2 Locations of Fixed Noise Sources I

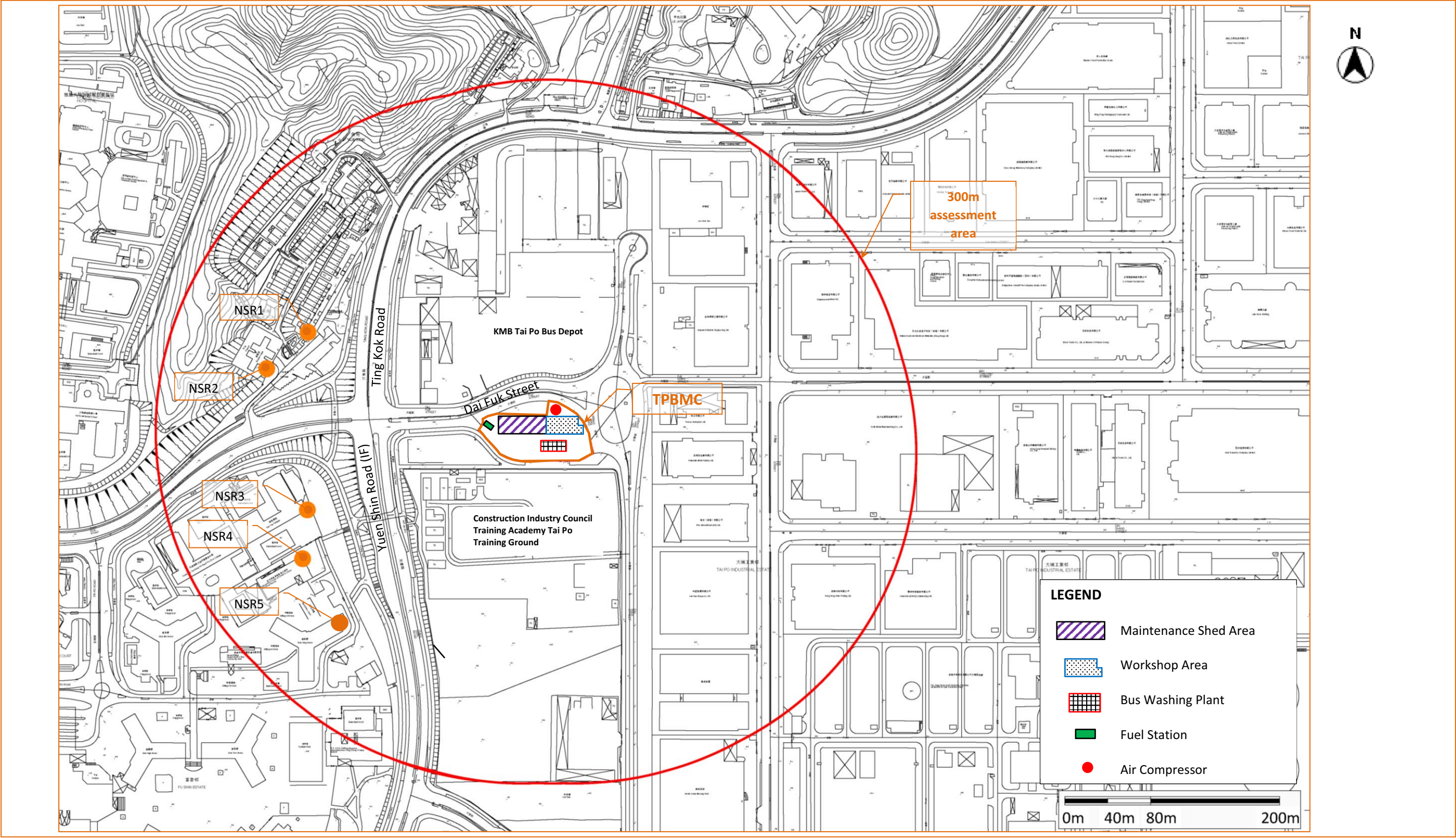
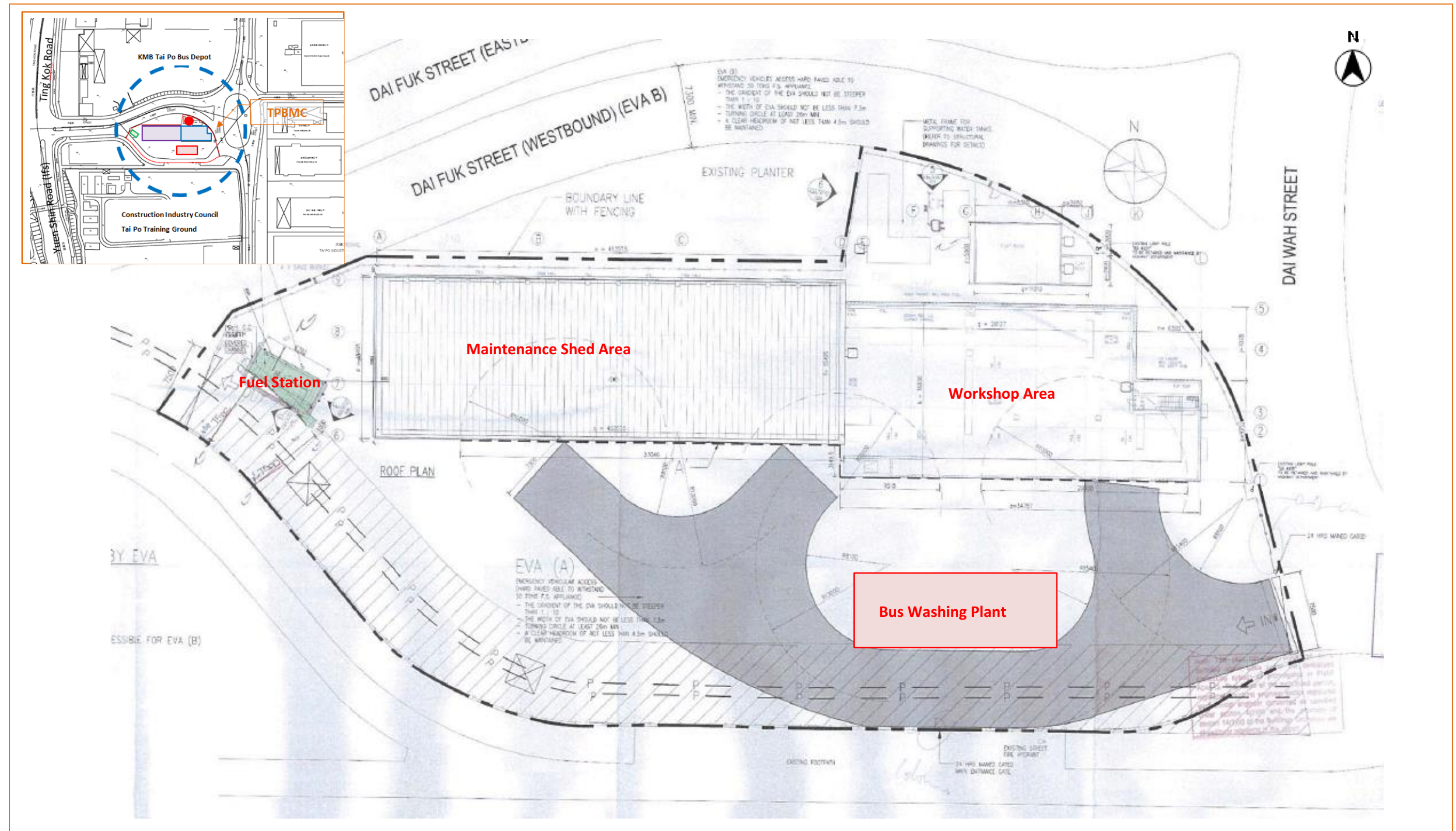


Figure 3-3 Locations of Fixed Noise Sources II



6 CONCLUSIONS AND RECOMMENDATIONS

6.1.1 An Environmental Assessment has been conducted to support the S16 Planning Application for the existing Tai Po Bus Maintenance Centre (located in Area 33 of Tai Po, New Territories (the Site)). TPBMC is not to be a Designated Project (DP) under the Environmental Impact Assessment Ordinance (EIAO).

6.1.2 As the TPBMC has already been constructed and is in operation, the assessment has focused only on the continuing operation of the TPMC. It is the conclusion of this EAS that no adverse environmental impacts are anticipated due to the continuing operation of TPBMC. Specific conclusions for air quality, noise, water quality and waste management are as follows:

Air Quality

6.1.3 No major activities have been identified during the operation of the TPBMC that will cause any off-site adverse air quality impacts. No adverse air quality impact on the air sensitive uses from vehicle emissions or chimney emissions is anticipated. As such, no adverse air quality impact is anticipated arising from the continuing operation of TPBMC.

Noise

6.1.4 The fixed noise levels are estimated to comply with the noise criteria while the noise contribution due to TPBMC range from 0.0 to 0.7dB(A), which are less than 1.0dB(A). As such, no adverse noise impact is anticipated arising from the continuing operation of TPBMC.

Water Quality

6.1.5 MTR will continue to properly operate and maintain the on-site WWTP to ensure in compliance with the Discharge Licence. No adverse water quality impact is anticipated due to the continuing operation of TPBMC.

Waste and Land Contamination

6.1.6 Just under 30kg/day of general refuse may be generated by staff at TPBMC, which is insignificant compared to the 10,159 tonnes of MSW that was disposed of at Hong Kong's landfills each day in 2015. Based on a review of historical land use and site inspection, there is no reason to suspect the presence of contaminated land, either from past use of the Site or from the continuing operation of TPBMC. As such, no adverse waste management impacts or land contamination are anticipated due to the continuing operation of TPBMC.