

LIST OF APPENDICES

Appendix I	Details of the affected business premises
Appendix II	Details of alternative sites for relocation
Appendix III	Comparison Table showing the changes between the proposed scheme and the approved scheme under application No. A/HSK/516

Appendix I

Details of the affected business premises

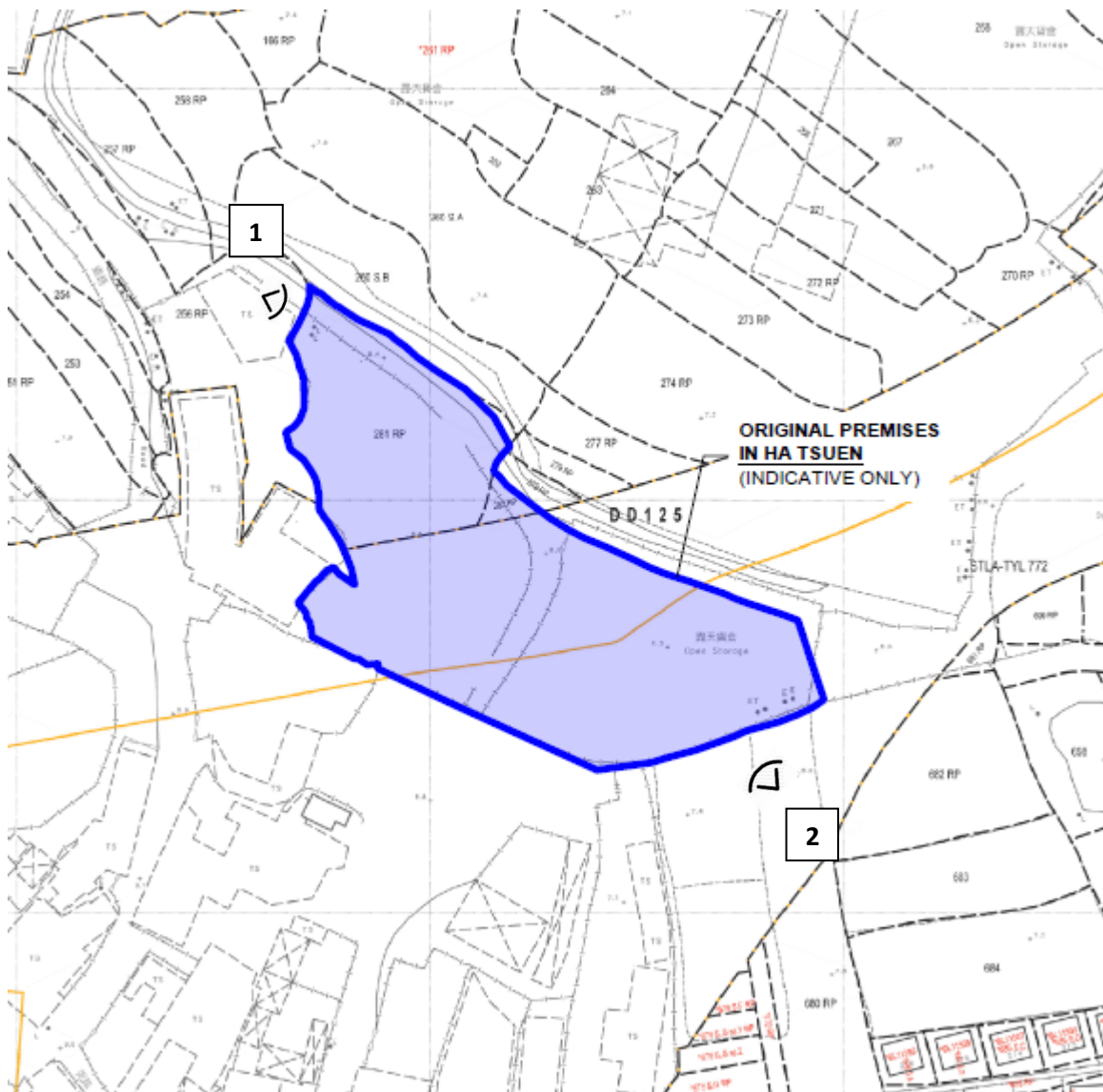
Appendix I – Details of the Affected Business Premises

Operator Name: **Mr. TANG Sheung Chai**

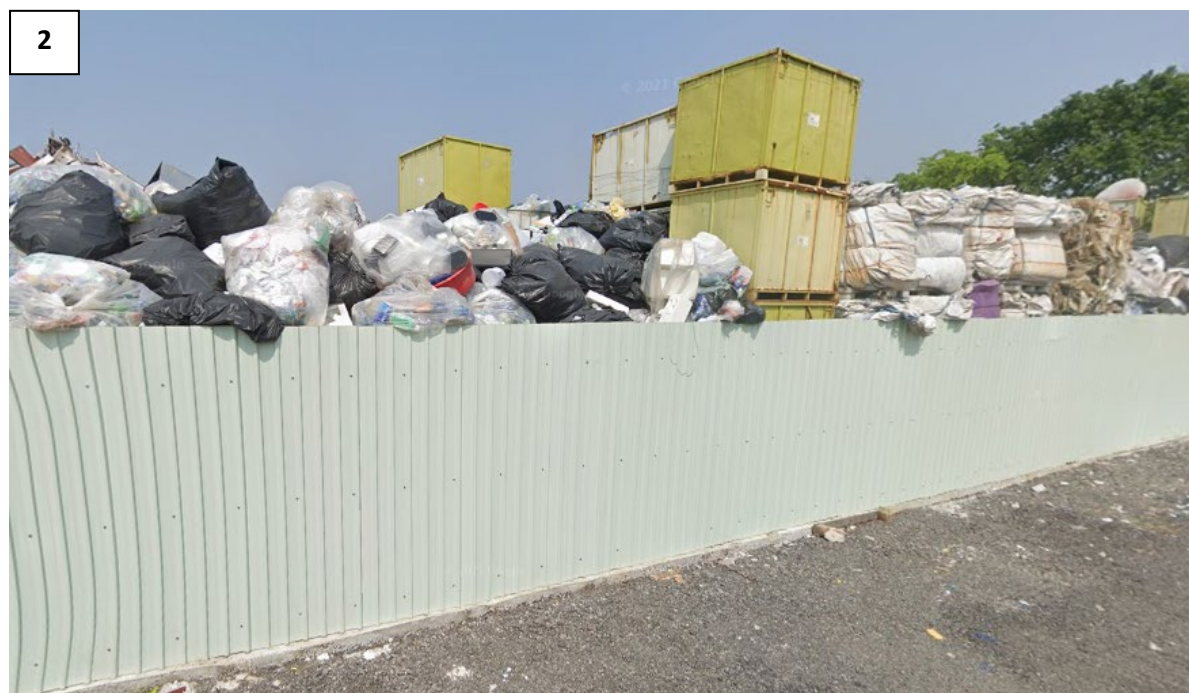
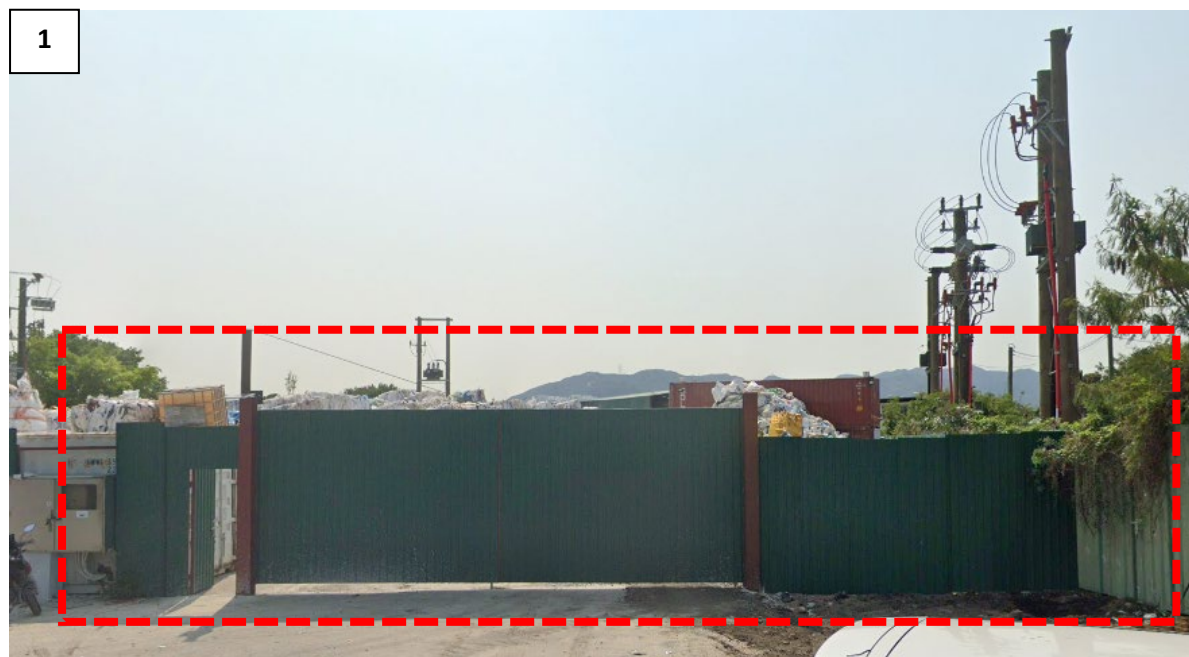
Details of the Affected Business Premises

Location: Lots 280 (Part), 281 (Part) and 681 (Part) in D.D. 125, San Wai, Ha Tsuen, Yuen Long, New Territories

Use of Premises: Temporary Open Storage of Recyclable Materials (including Metal and Plastic) & Construction Materials and Warehouse for Storage of Construction Materials for a Period of 5 Years



Site Photo of the Affected Business Premises



Appendix II

Details of alternative sites for relocation

Appendix II – Alternative Sites for the Relocation of the Applicant's Original Premises

Alternative Site / Application Site	Site 1	Site 2	Site 3	Site 4	Site 5	Application Site
Location	Various Lots in D.D. 99, Chau Tau, San Tin, New Territories	Various Lots in D.D. 103, Kam Tin, Yuen Long, New Territories	Various Lots in D.D. 93, Ma Tso Lung, New Territories	Various Lots in D.D. 129, Lau Fau Shan, Yuen Long, New Territories	Various Lots in D.D. 130, Lam Tei, Tuen Mun, New Territories	Various Lots in D.D. 128, Pak Nai, Yuen Long, New Territories
Site Area	4,242m ² (about)	540 m ² (about)	30,190 m ² (about)	10,740 m ² (about)	7,130 m ² (about)	4,713 m ² (about)
Accessibility	Accessible from Lok Ma Chau Road via a local access	Accessible from Kam Tin Road via a local access	Accessible from Ma Tso Lung Road via a local access	Accessible from Deep Bay Road via a local access	Accessible from Fuk Hang Tsuen Road via a local access	Accessible from Kai Pak Ling Road via Deep Bay Road and a local access
Distance from the Original Premise	18.4 km (about)	11.2 km (about)	22.4 km (about)	5.2 km (about)	6.3 km (about)	2.3 km (about)
Outline Zoning Plan	Approved San Tin Technopole OZP No. S/STT/2	Approved Kam Tin South OZP No. S/YL-KTS/15	Approved Ma Tso Lung and Hoo Hok Wai OZP No. S/NE-MTL/3	Approved Lau Fau Shan & Tsim Bei Tsui OZP No.: S/YL-LFS/11	Approved Lam Tei and Yick Yuen OZP No. S/TM-LTY/12	Approved Ha Tsuen Fringe OZP No. S/YL-HTF/12
Zoning	"Other Specified Uses" annotated "Innovation and Technology" ("OU(I&T)")	"Agriculture" ("AGR")	"Green Belt" ("GB") and "Conservation Area (1)" ("CA(1)")	"Green Belt" ("GB")	"Comprehensive Development Area" ("CDA")	"Agriculture" ("AGR")
Existing Condition	Generally flat, partially covered with vegetation and occupied by vacant temporary structures	Vacant and covered with vegetation	Mostly vacant, covered with vegetation and occupied by fishpond	Covered with vegetation and woodland	Hard-paved and occupied by temporary structures	Vacant, flat and formed
Surrounding Area	Surrounded by temporary structures for storage, workshop and agricultural uses; and vacant land covered by vegetation and hard-paving	Surrounded by open storage, some G/IC uses, woodland and residential dwellings	Surrounded by vegetation, pond, some GIC/residential use	Surrounded by tree groups, temporary structures for open storage and residential use	Surrounded by warehouse, workshop, logistic centre and land for residential use	Surrounded by temporary structures for workshop and open storage uses; and vacant land covered by vegetation and hard-paving
Suitability for Relocation	<u>Not suitable</u> for relocation: <ul style="list-style-type: none"> - Tree felling is required - Not compatible with the surrounding area - Land is expected to be resumed for the STT development - Remote location 	<u>Not suitable</u> for relocation: <ul style="list-style-type: none"> - Active agricultural activities in the vicinity - Tree felling is required - Not compatible with the surrounding area 	<u>Not suitable</u> for relocation: <ul style="list-style-type: none"> - Much larger than the original premises - Within the closed area - Falls within the "CA (1)" zone - Narrow roads nearby, unfriendly for larger vehicles - Not compatible with surrounding area 	<u>Not suitable</u> for relocation: <ul style="list-style-type: none"> - much larger than the original premises - within the "GB" zone - not compatible with the surrounding area 	<u>Not suitable</u> for relocation: <ul style="list-style-type: none"> - In close proximity to residential uses - Tree felling is required - Not compatible with the surrounding area 	<u>Suitable</u> for relocation: <ul style="list-style-type: none"> - No active agricultural activities - Not incompatible with the surrounding area - Assessible from public road - In close proximity from the original premise and Border Control Points

Appendix III

Comparison Table showing the changes between the proposed scheme and the approved scheme under application No. A/HSK/516

Appendix III – Comparison table showing the changes between the proposed scheme and the approved scheme under application No. A/HSK/516

Development Parameters	Approved Application No. A/HSK/516 (a)	Current Application (b)	Difference (b)-(a)	
Site Area	7,000 m ² (about)	4,713 m ² (about)	-2,287 m ²	-33%
Covered Area	724 m ² (about)	2,007 m ² (about)	+1,283 m ²	+177%
Uncovered Area	6,276 m ² (about)	2,706 m ² (about)	-3,570 m ²	-57%
Plot Ratio	0.11 (about)	0.44 (about)	+0.33	+300%
Site Coverage	10% (about)	43% (about)	+33%	+330%
No. of Structure	4	5	+1	
Gross Floor Area	764 m ² (about)	2,058 m ² (about)	+1,294 m ²	+170%
- Domestic	N/A	N/A		
- Non-Domestic	764 m ² (about)	2,058 m ² (about)	+1,294 m ²	+70%
Building Height	6 - 8 m (about)	3 – 11 m (about)	+3 m	
No. of Storey	1 - 2	1 - 2	-	
Operation Hours	Monday to Saturday 09:00 – 19:00	Monday to Saturday 09:00 – 19:00	-	
No. of Private Car Parking Space	0	5	+5	
No. of Loading/Unloading Space	1 (Medium Goods Vehicle)	1 (Light Goods Vehicle) 1 (Container Vehicle)	+1	