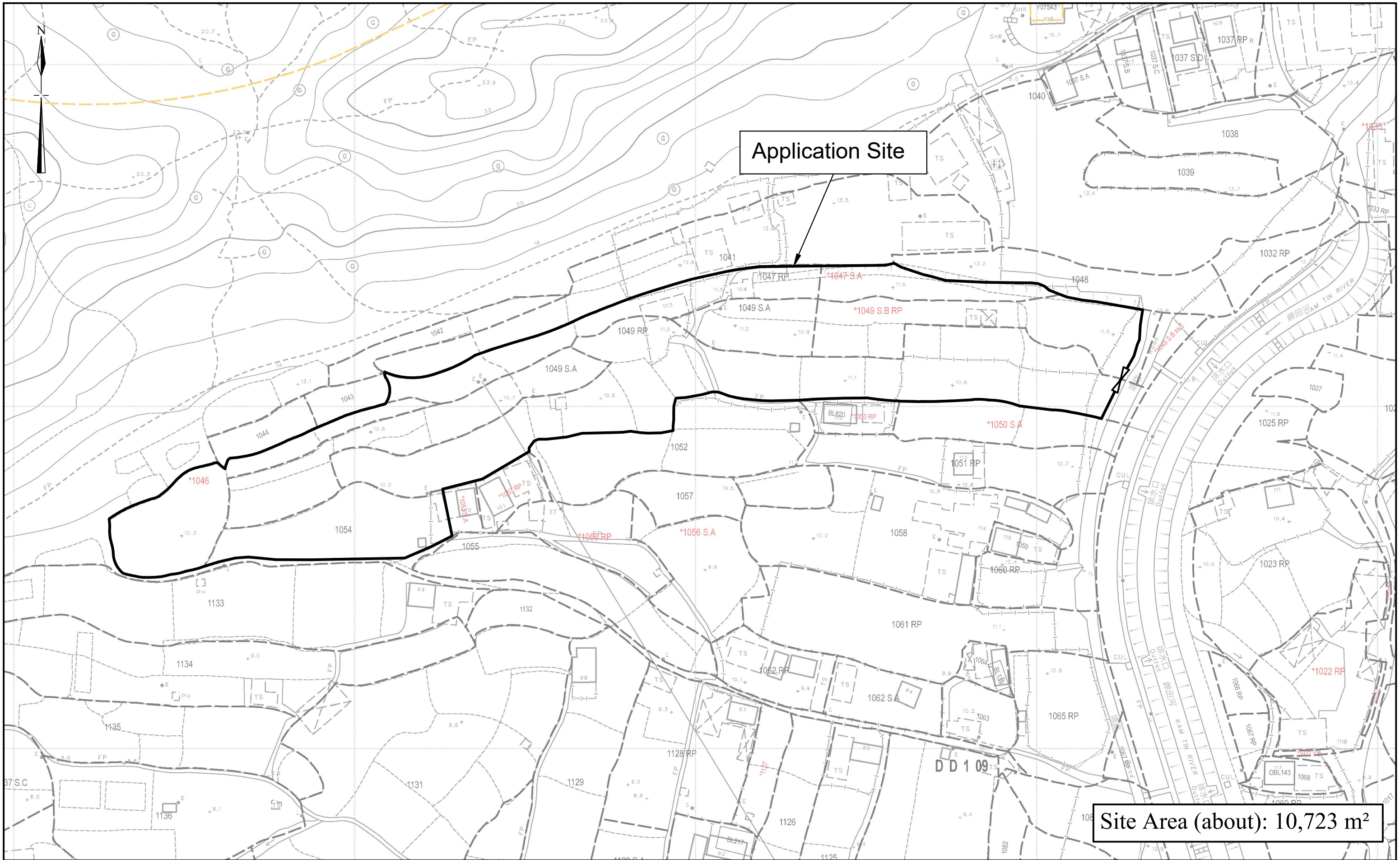


Extracted from Approved Kam Tin North Outline Zoning Plan no. S/YL-KTN/11

<p>N.T.S</p>	<p>Location Plan</p>	<p>Goldrich Planners & Surveyors Ltd.</p>
<p>April 2024</p>	<p>Lots 1046, 1047 S.A, 1047 RP, 1049 S.A, 1049 S.B RP (part), 1049 RP (part) and 1054 in D.D. 109 Kam Tin, Yuen Long</p>	<p>Plan 1 (P 22096)</p>



Application Site

Site Area (about): 10,723 m²

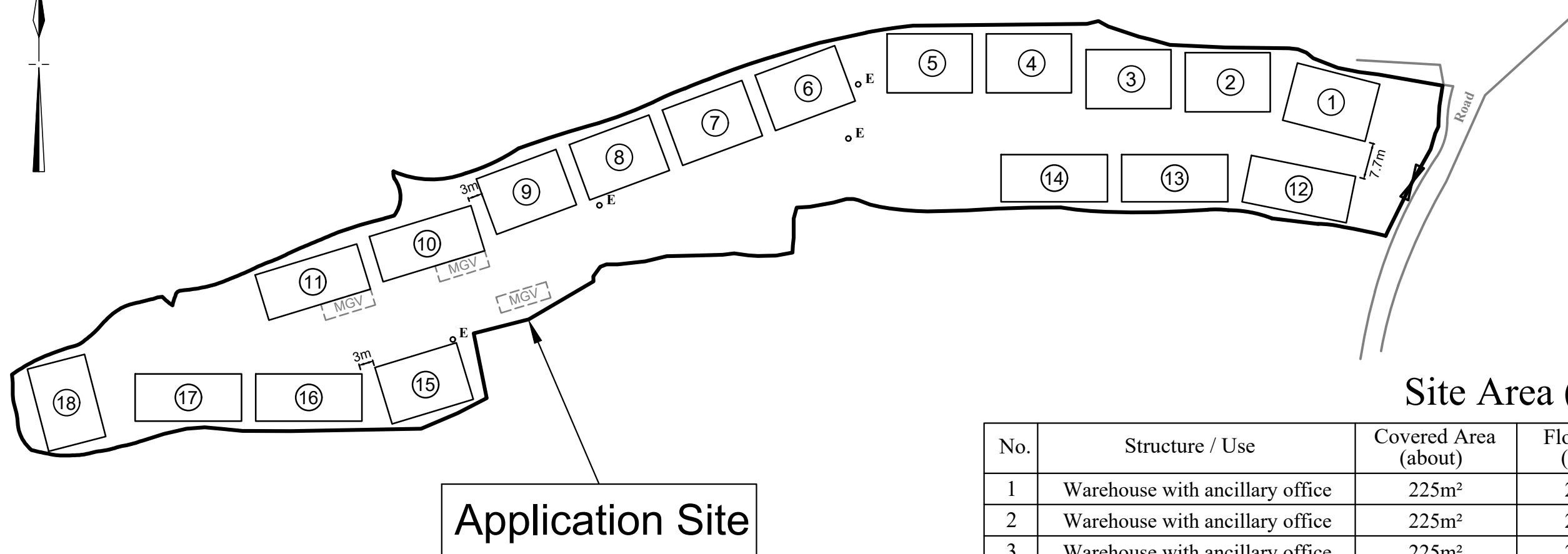
1:1000 (A3)
April 2024

Lot Index Plan

**Lots 1046, 1047 S.A, 1047 RP, 1049 S.A, 1049 S.B RP (part),
1049 RP (part) and 1054 in D.D. 109
Kam Tin, Yuen Long**

**Goldrich Planners &
Surveyors Ltd.**

**Plan 2
(P 22096)**



Site Area (about): 10,723 m²

No.	Structure / Use	Covered Area (about)	Floor Area (about)	Height	Storeys
1	Warehouse with ancillary office	225m ²	225m ²	9m	1
2	Warehouse with ancillary office	225m ²	225m ²	9m	1
3	Warehouse with ancillary office	225m ²	225m ²	9m	1
4	Warehouse with ancillary office	225m ²	225m ²	9m	1
5	Warehouse with ancillary office	225m ²	225m ²	9m	1
6	Warehouse with ancillary office	225m ²	225m ²	9m	1
7	Warehouse with ancillary office	225m ²	225m ²	9m	1
8	Warehouse with ancillary office	225m ²	225m ²	9m	1
9	Warehouse with ancillary office	225m ²	225m ²	9m	1
10	Warehouse with ancillary office	225m ²	225m ²	9m	1
11	Warehouse with ancillary office	225m ²	225m ²	9m	1
12	Warehouse with ancillary office	225m ²	225m ²	9m	1
13	Warehouse with ancillary office	225m ²	225m ²	9m	1
14	Warehouse with ancillary office	225m ²	225m ²	9m	1
15	Warehouse with ancillary office	225m ²	225m ²	9m	1
16	Warehouse with ancillary office	225m ²	225m ²	9m	1
17	Warehouse with ancillary office	225m ²	225m ²	9m	1
18	Warehouse with ancillary office	225m ²	225m ²	9m	1
	Total	<u>4,050m²</u>	<u>4,050m²</u>		

Legend



Vehicular Ingress / Egress



Parking Space for medium goods vehicle
(11m (L) x 3.5(W))

1:1000 (A3)

April 2024

Layout Plan

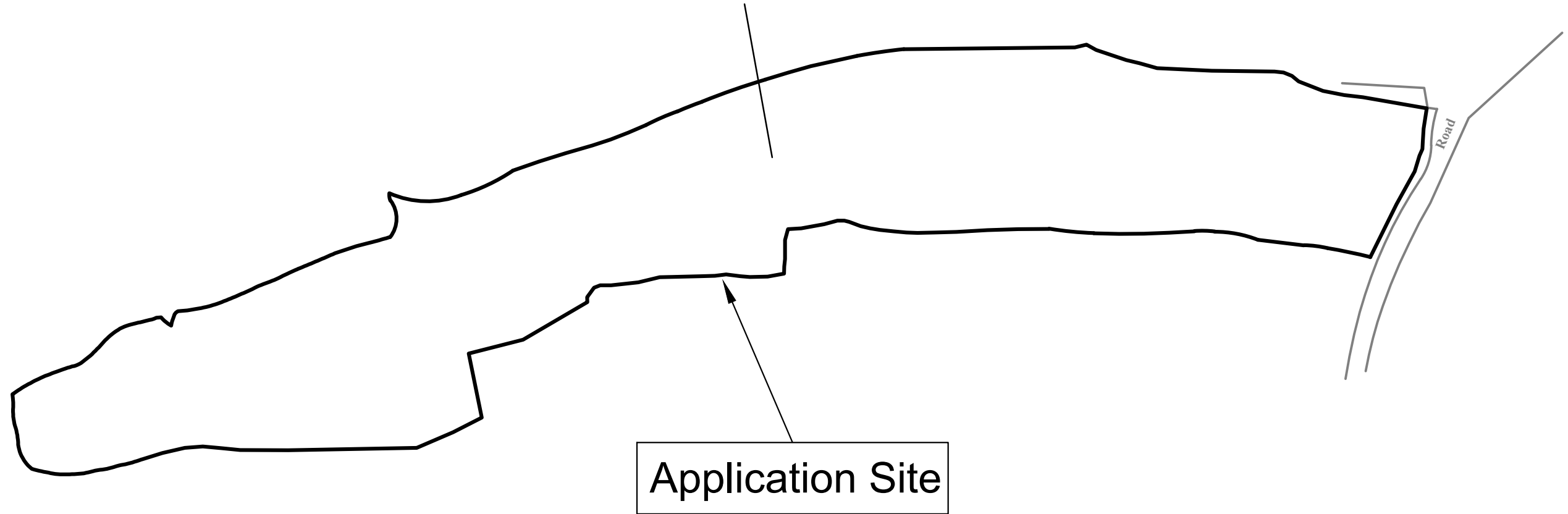
**Lots 1046, 1047 S.A, 1047 RP, 1049 S.A, 1049 S.B RP (part),
1049 RP (part) and 1054 in D.D. 109
Kam Tin, Yuen Long**

**Goldrich Planners &
Surveyors Ltd.**

**Plan 3
(P 22096)**



**The entire site is to be paved with concrete of
about 0.2m in depth (from 12.0 mPD to 12.2 mPD)**



Site Area (about): 10,723 m²

1:1000 (A3)

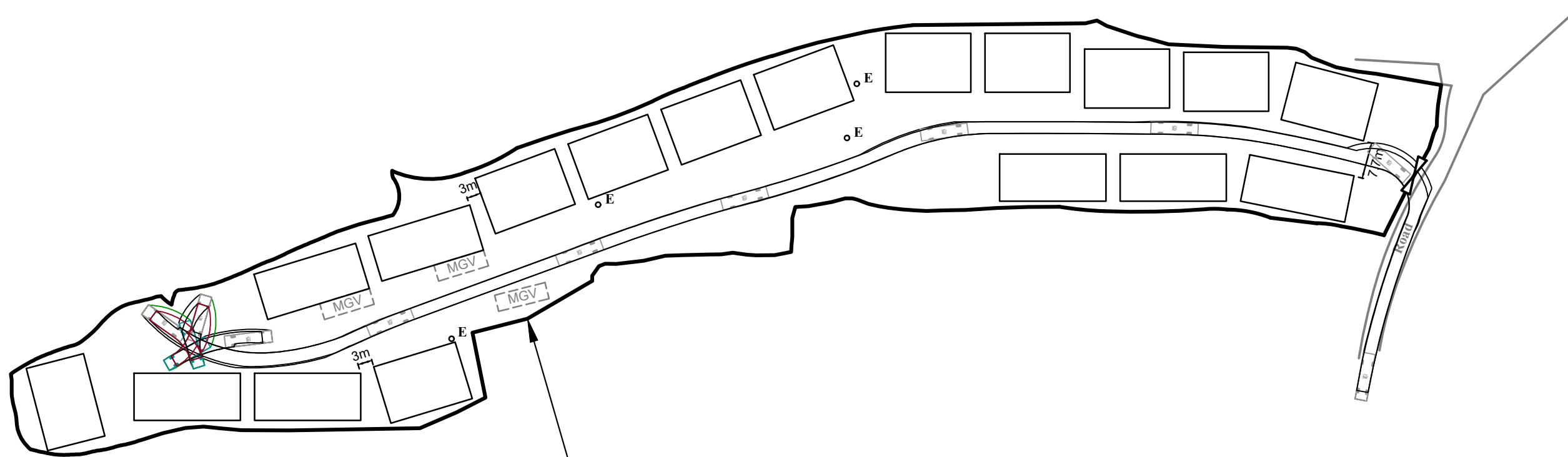
April 2024

Plan Showing the Proposed Filling of Land

**Lots 1046, 1047 S.A, 1047 RP, 1049 S.A, 1049 S.B RP (part),
1049 RP (part) and 1054 in D.D. 109
Kam Tin, Yuen Long**

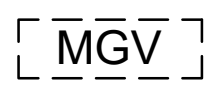


**Goldrich Planners &
Surveyors Ltd.**

**Plan 4
(P 22096)**



Application Site

Legend

-  Parking space for medium goods vehicle (11m (L) x 3.5m (W))
-  Medium goods vehicle (10m (L) x 2.5(W))
-  Vehicular Ingress / Egress

1:1000 (A3)

April 2024

Swept Path Analysis

Lots 1046, 1047 S.A, 1047 RP, 1049 S.A, 1049 S.B RP (part),
1049 RP (part) and 1054 in D.D. 109
Kam Tin, Yuen Long

Goldrich Planners & Surveyors Ltd.

Plan 5
(P 22096)



N.T.S	<p align="center">Plan Showing Nearest Public Transport Services</p>	<p align="center">Goldrich Planners & Surveyors Ltd.</p>
<p align="center">March 2024</p>	<p align="center">Lots 1046, 1047 S.A, 1047 RP, 1049 S.A, 1049 S.B RP (part), 1049 RP (part) and 1054 in D.D. 109 Kam Tin, Yuen Long</p>	<p align="center">Plan 6 (P 22096)</p>