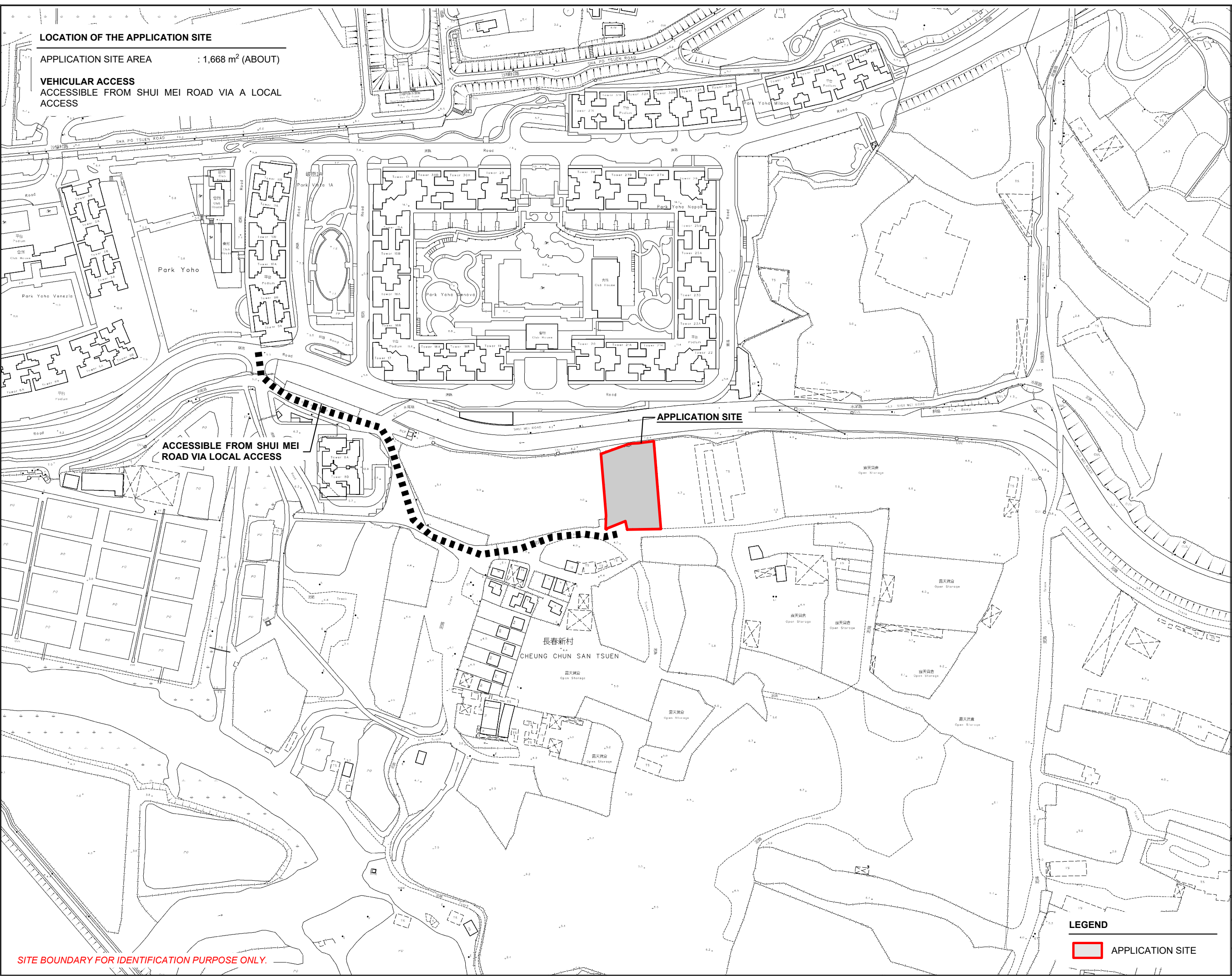
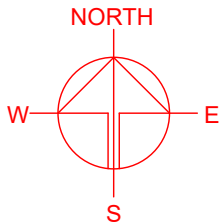


LOCATION OF THE APPLICATION SITE

APPLICATION SITE AREA : 1,668 m² (ABOUT)

VEHICULAR ACCESS
ACCESSIBLE FROM SHUI MEI ROAD VIA A LOCAL
ACCESS



SITE BOUNDARY FOR IDENTIFICATION PURPOSE ONLY.

LEGEND

 APPLICATION SITE

PLANNING CONSULTANT



PROJECT

TEMPORARY PUBLIC VEHICLE
PARK (EXCLUDING CONTAINER
VEHICLE) FOR A PERIOD OF 5
YEARS

SITE LOCATION

LOTS 1750A9 (PART) AND 1905
RP (PART) IN D.D. 107, CHEUNG
CHUN SAN TSUEN, KAM TIN,
YUEN LONG, NEW TERRITORIES

SCALE

1 : 3000 @ A4

DRAWN BY	DATE
MN	13.1.2025
CHECKED BY	DATE
APPROVED BY	DATE

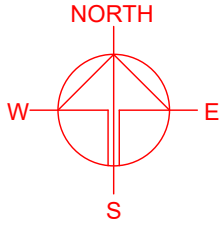
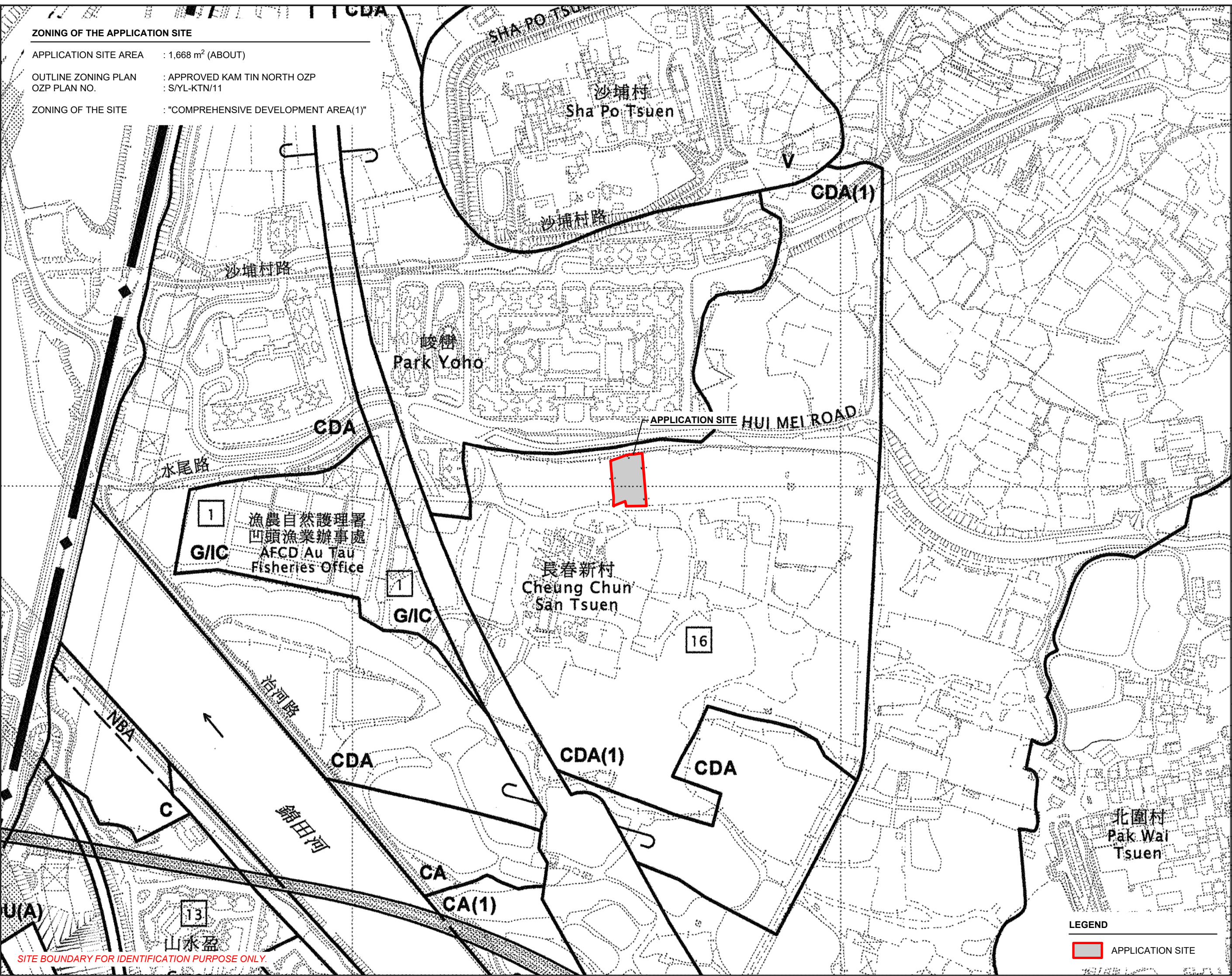
DWG. TITLE	
LOCATION PLAN	
DWG NO.	VER.
PLAN 1	001

ZONING OF THE APPLICATION SITE

APPLICATION SITE AREA : 1,668 m² (ABOUT)

OUTLINE ZONING PLAN : APPROVED KAM TIN NORTH OZP
OZP PLAN NO. : S/YL-KTN/11

ZONING OF THE SITE : "COMPREHENSIVE DEVELOPMENT AREA(1)"



PLANNING CONSULTANT



PROJECT

TEMPORARY PUBLIC VEHICLE PARK (EXCLUDING CONTAINER VEHICLE) FOR A PERIOD OF 5 YEARS

SITE LOCATION

LOTS 1750A9 (PART) AND 1905 RP (PART) IN D.D. 107, CHEUNG CHUN SAN TSUEN, KAM TIN, YUEN LONG, NEW TERRITORIES

SCALE

1 : 5000 @ A4

DRAWN BY

MN

DATE

13.1.2025

CHECKED BY

DATE

APPROVED BY

DATE

DWG. TITLE

ZONING OF THE SITE

DWG NO.

PLAN 2

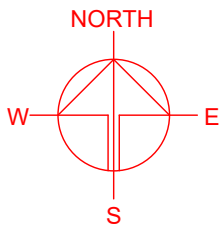
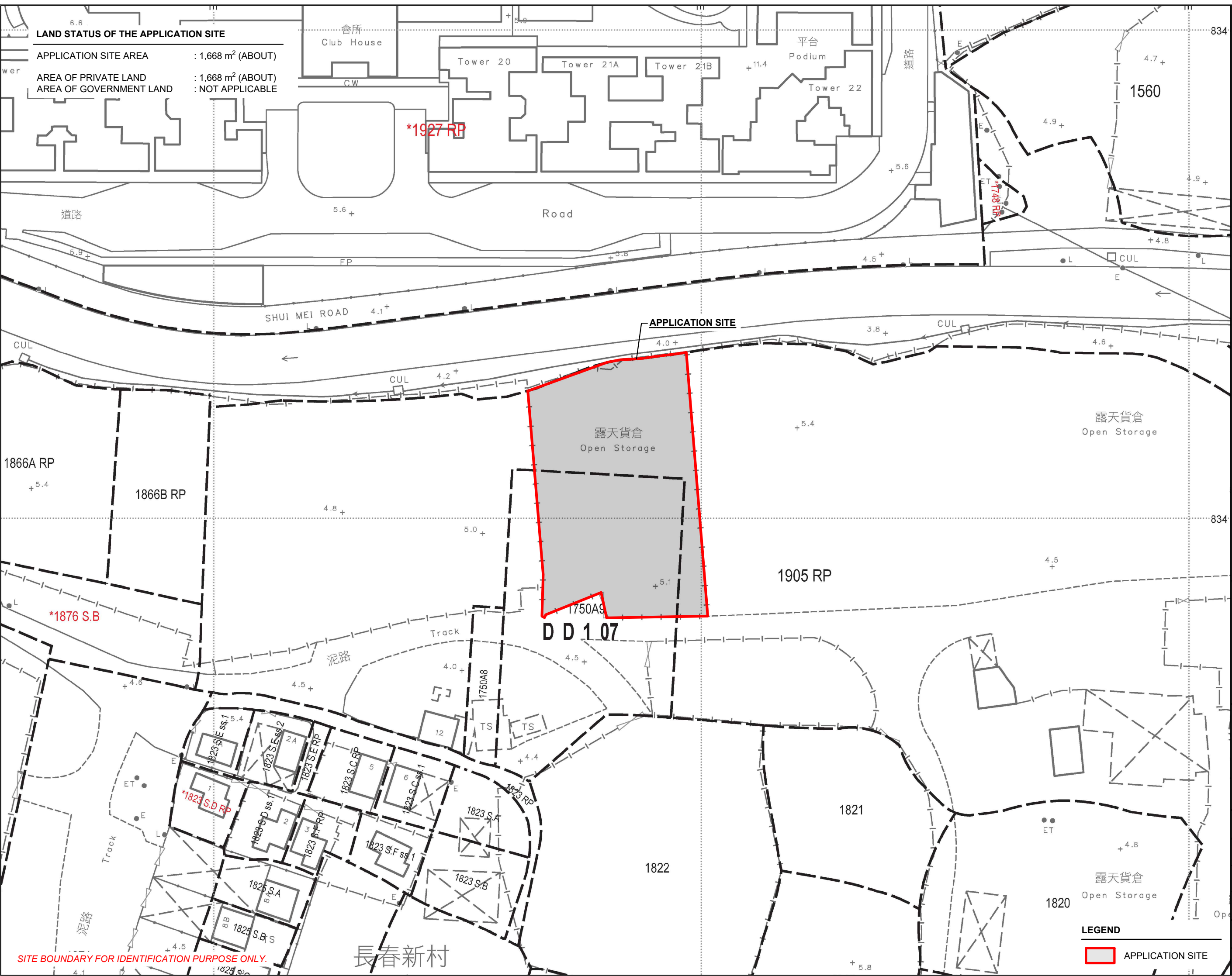
VER.

001

LEGEND

 APPLICATION SITE

SITE BOUNDARY FOR IDENTIFICATION PURPOSE ONLY.



PLANNING CONSULTANT



PROJECT

TEMPORARY PUBLIC VEHICLE PARK (EXCLUDING CONTAINER VEHICLE) FOR A PERIOD OF 5 YEARS

SITE LOCATION

LOTS 1750A9 (PART) AND 1905 RP (PART) IN D.D. 107, CHEUNG CHUN SAN TSUEN, KAM TIN, YUEN LONG, NEW TERRITORIES

SCALE

1 : 1000 @ A4

DRAWN BY

MN

DATE

13.1.2025

CHECKED BY

DATE

APPROVED BY

DATE

DWG. TITLE

LAND STATUS OF THE SITE

DWG NO.

PLAN 3

VER.

001

LEGEND

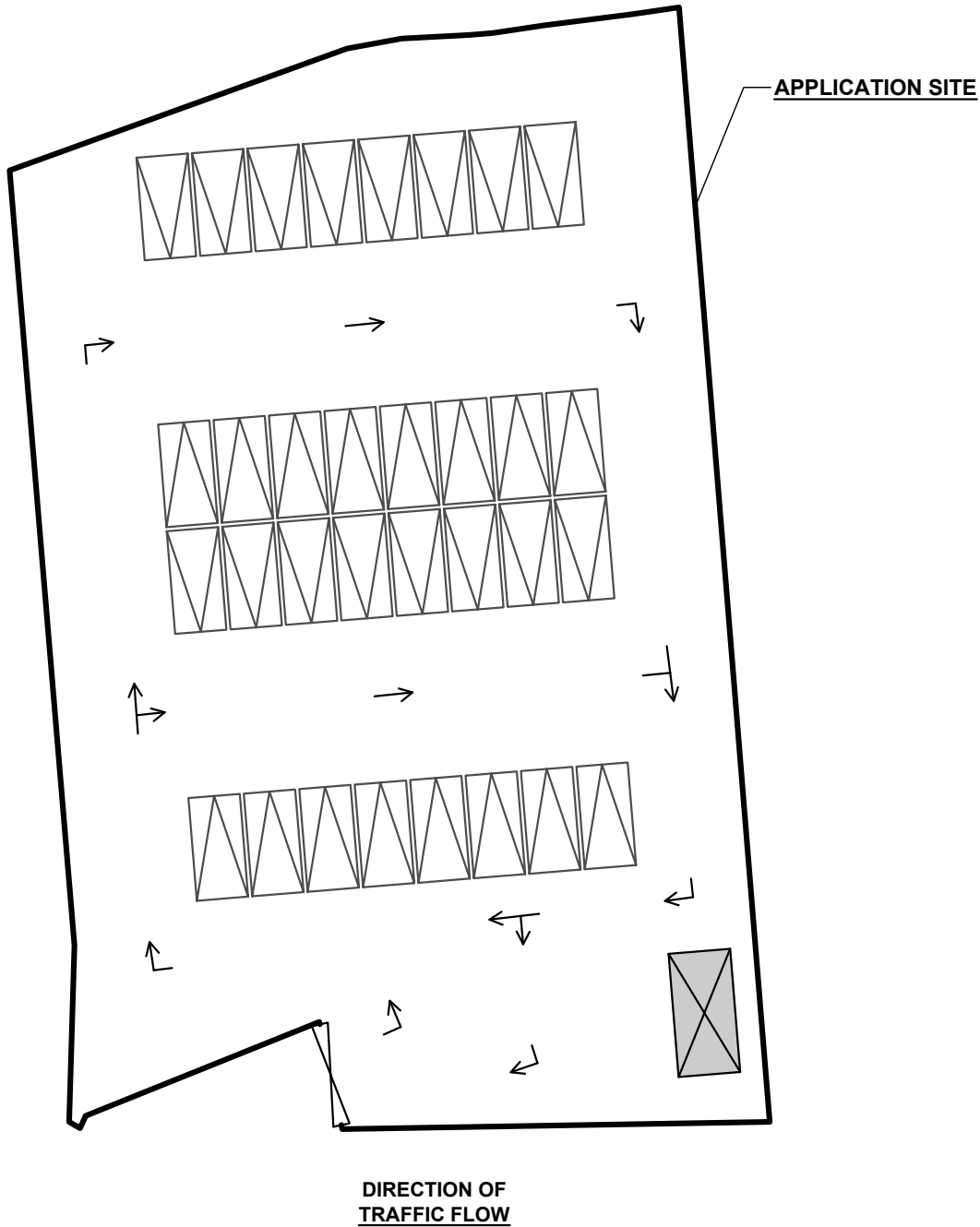
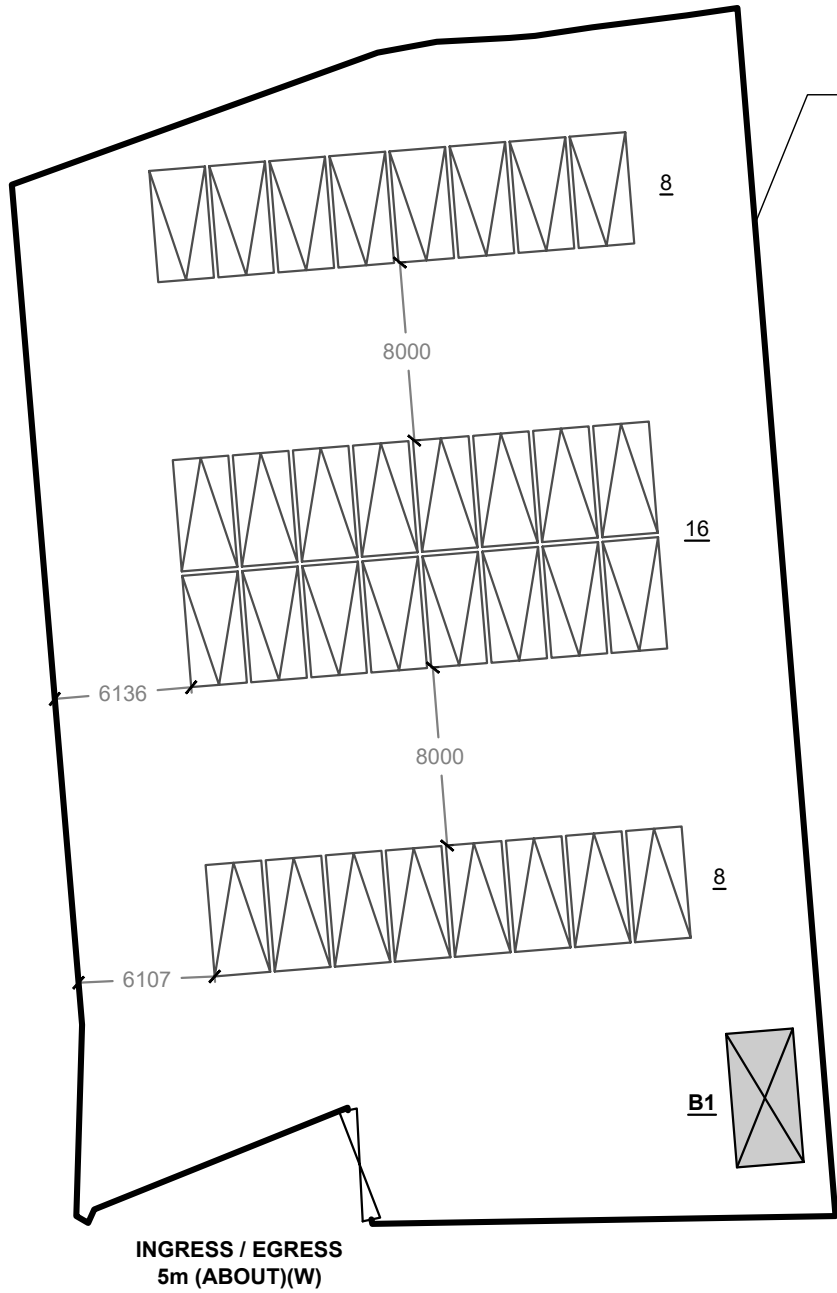
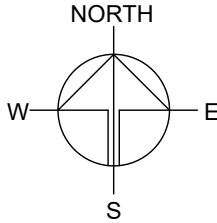


APPLICATION SITE

DEVELOPMENT PARAMETERS

APPLICATION SITE AREA	: 1,668 m ²	(ABOUT)
COVERED AREA	: 18 m ²	(ABOUT)
UNCOVERED AREA	: 1,650 m ²	(ABOUT)
PLOT RATIO	: 0.01	(ABOUT)
SITE COVERAGE	: 1%	(ABOUT)
NO. OF STRUCTURE	: 1	
DOMESTIC GFA	: NOT APPLICABLE	
NON-DOMESTIC GFA	: 18 m ²	(ABOUT)
TOTAL GFA	: 18 m ²	(ABOUT)
BUILDING HEIGHT	: 3 m	(ABOUT)
NO. OF STOREY	: 1	

STRUCTURE	USE	COVERED AREA	GROSS FLOOR AREA	BUILDING HEIGHT
B1	SITE OFFICE	18m ² (ABOUT)	18m ² (ABOUT)	3m (ABOUT)(1-STOREY)
TOTAL		18m ² (ABOUT)	18m ² (ABOUT)	



PARKING PROVISIONS

NO. OF PRIVATE CAR PARKING SPACE	: 32
DIMENSION OF PARKING SPACE	: 5m (L) X 2.5m (W)

LEGEND

	APPLICATION SITE
	STRUCTURE
	PARKING SPACE
	INGRESS / EGRESS

PLANNING CONSULTANT



PROJECT

TEMPORARY PUBLIC VEHICLE PARK (EXCLUDING CONTAINER VEHICLE) FOR A PERIOD OF 5 YEARS

SITE LOCATION

LOTS 1750A9 (PART) AND 1905 RP (PART) IN D.D. 107, CHEUNG CHUN SAN TSUEN, KAM TIN, YUEN LONG, NEW TERRITORIES

SCALE

1 : 500 @ A4

DRAWN BY

MN

DATE

13.1.2025

CHECKED BY

DATE

APPROVED BY

DATE

DWG. TITLE

LAYOUT PLAN

DWG NO.

PLAN 4

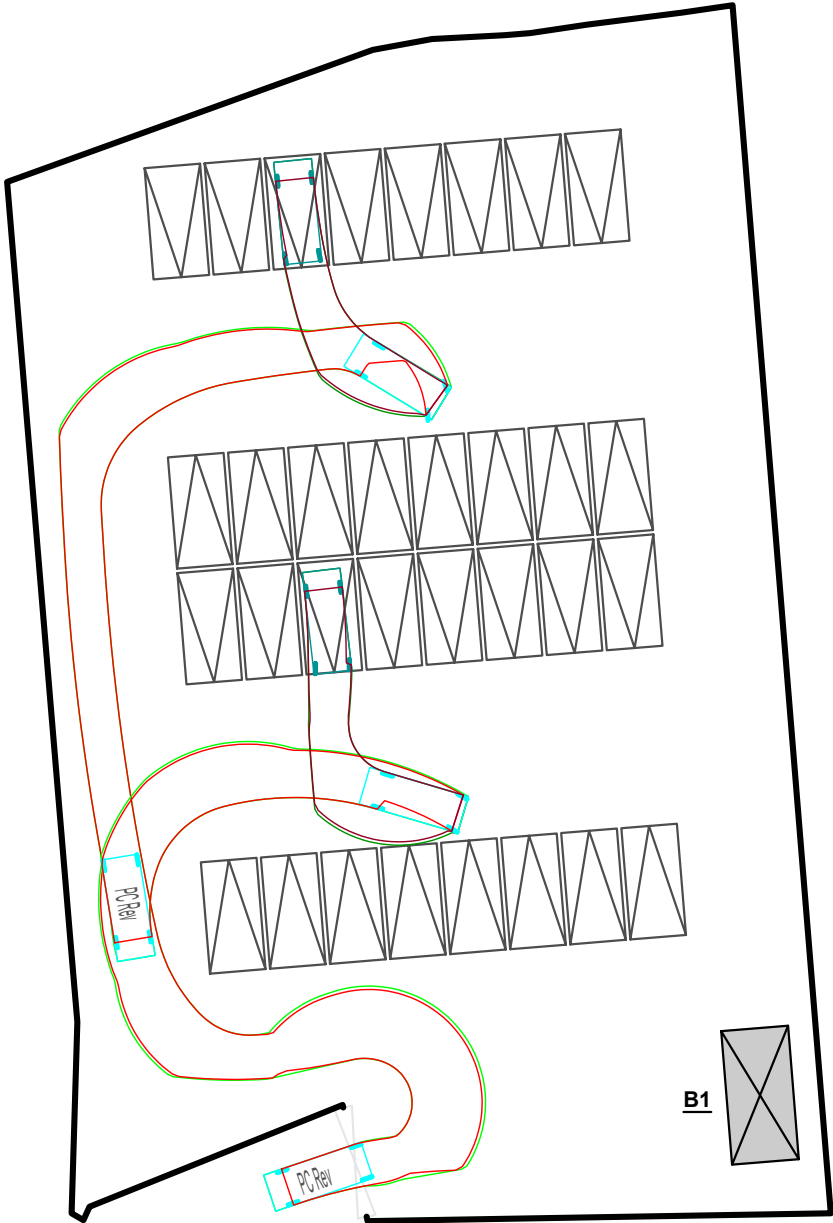
VER.

001

SWEPT PATH ANALYSIS

TYPE OF VEHICLE : PRIVATE CAR
DIMENSION OF VEHICLE : 1.7m (W) X 4.6m (L)

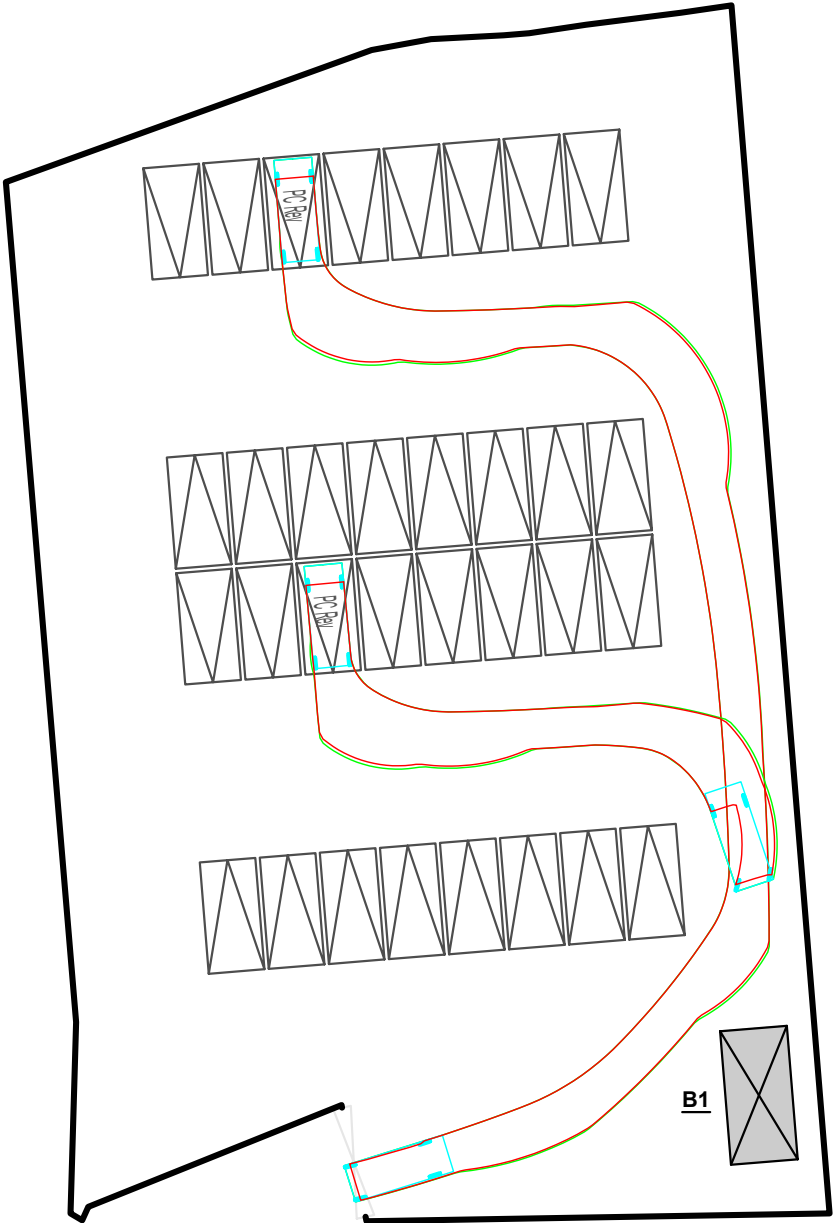
SWEPT PATHS GENERATED BY AUTODESK VEHICLE TRACKING



INGRESS / EGRESS
5m (ABOUT)(W)

FROM THE LOCAL ACCESS TO
THE APPLICATION SITE

SITE BOUNDARY FOR IDENTIFICATION PURPOSE ONLY.

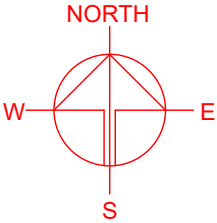


INGRESS / EGRESS
5m (ABOUT)(W)

FROM THE APPLICATION SITE TO
THE LOCAL ACCESS

LEGEND

- APPLICATION SITE
- PARKING SPACE
- PRIVATE CAR
- SWEPT PATH OF VEHICLE



PLANNING CONSULTANT



PROJECT

PROPOSED TEMPORARY
PUBLIC VEHICLE PARK
(EXCLUDING CONTAINER
VEHICLE) FOR A PERIOD OF 5
YEARS

SITE LOCATION

LOTS 1750A9 (PART) AND 1905
RP (PART) IN D.D. 107, CHEUNG
CHUN SAN TSUEN, KAM TIN,
YUEN LONG, NEW TERRITORIES

SCALE

1 : 500 @ A4

DRAWN BY

MN

DATE

13.1.2025

CHECKED BY

DATE

APPROVED BY

DATE

DWG. TITLE

SWEPT PATH ANALYSIS

DWG NO.

PLAN 5

VER.

001